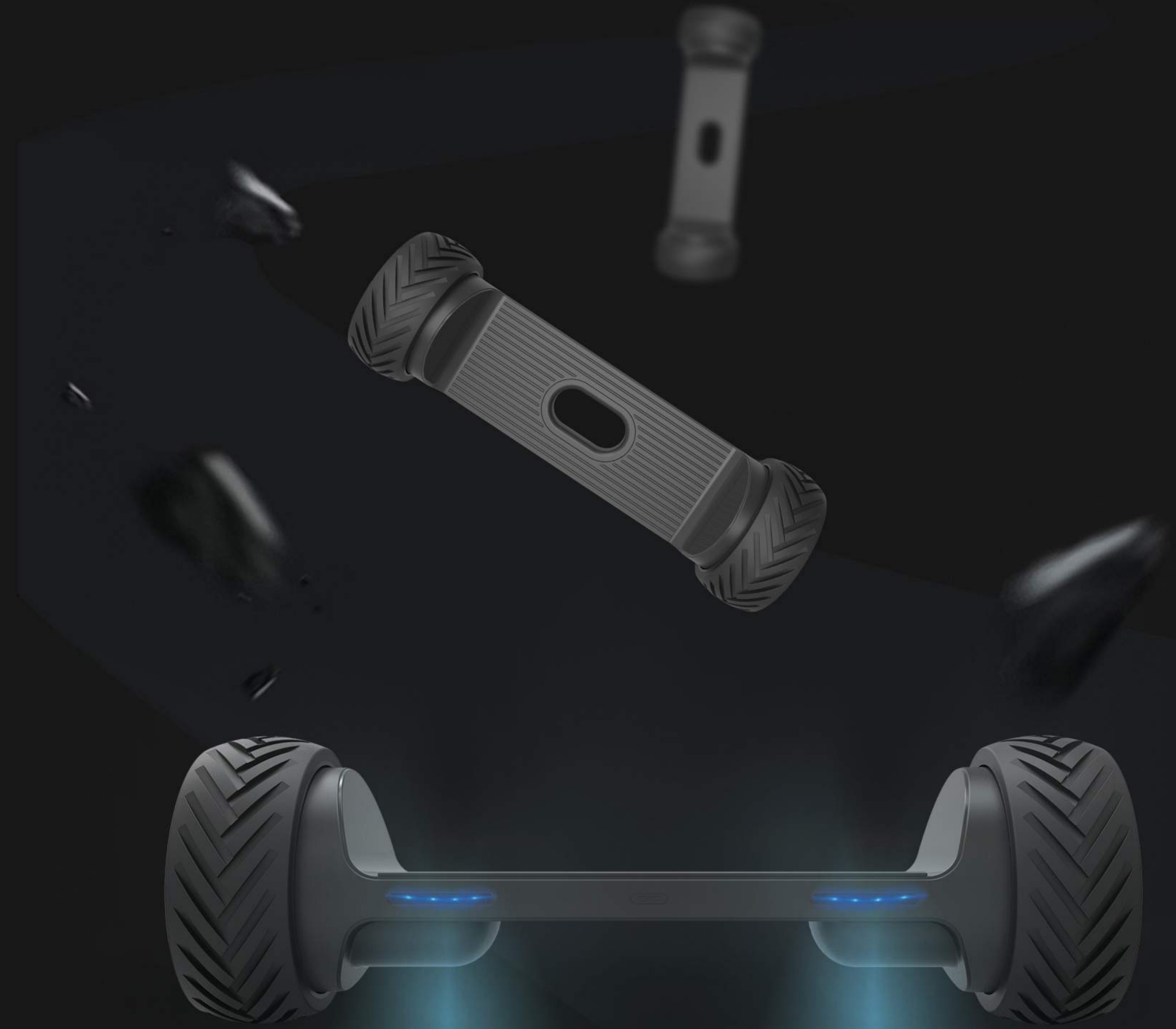


innowin
HOVER BOARD



innowin

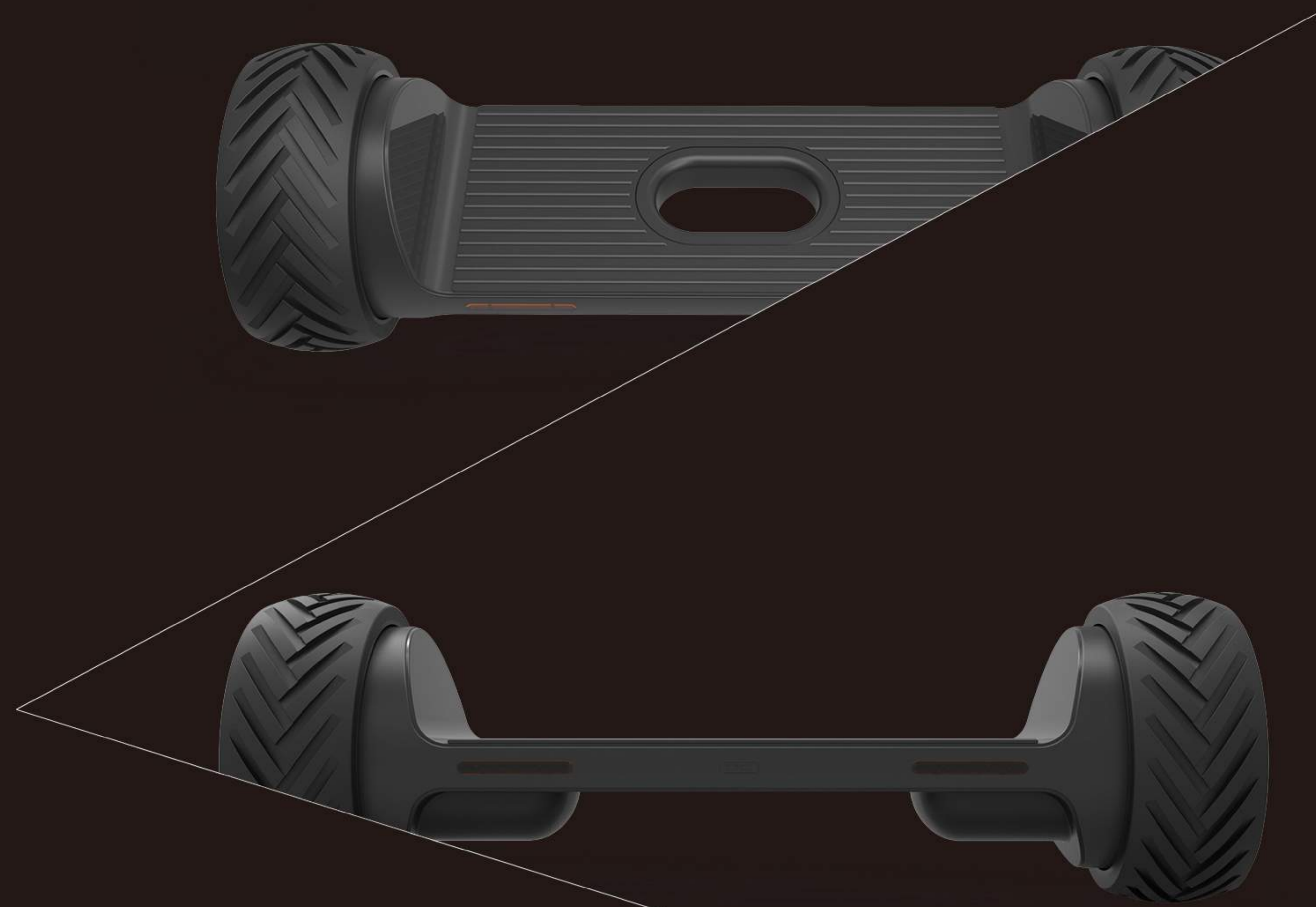


美本集团
MAINBON GROUP

Clyde: +86 137 6460 8888; +1 323 897 8888; sales@mainbon.com

Factory Location: 100 Huaxia Road, Yongkang, Zhejiang China.

Sales Office: 578 Tianbao Road, RM 1212, Shanghai 200086 China.



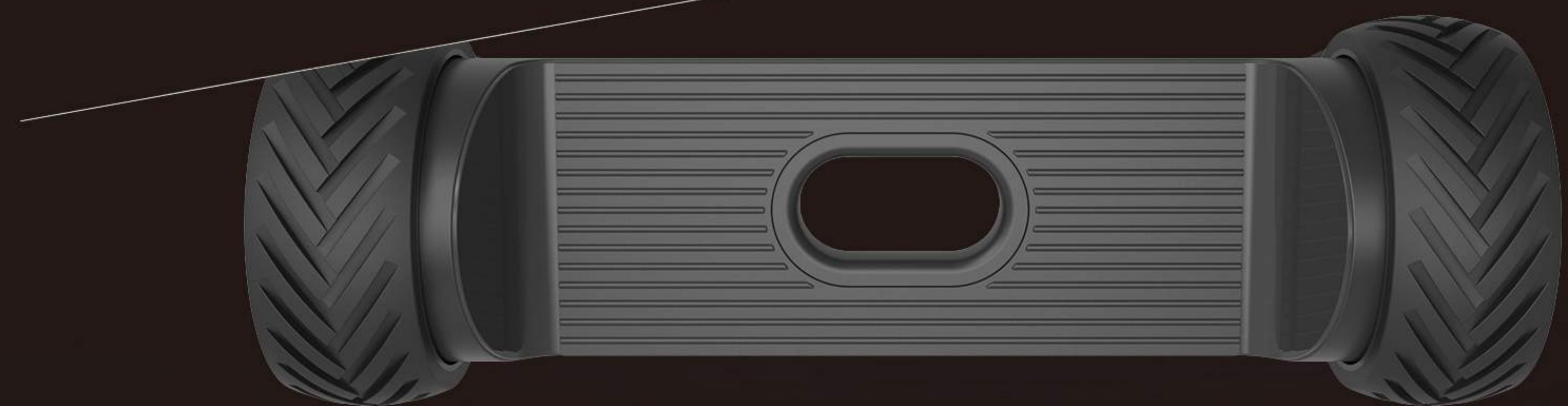
- ◎ 续航时间/Time 45MINS
- ◎ 电机/Motor 250W
- ◎ 轮子尺寸/Tire Size 9INCH
- ◎ 速度/Max Speed 12KM/H

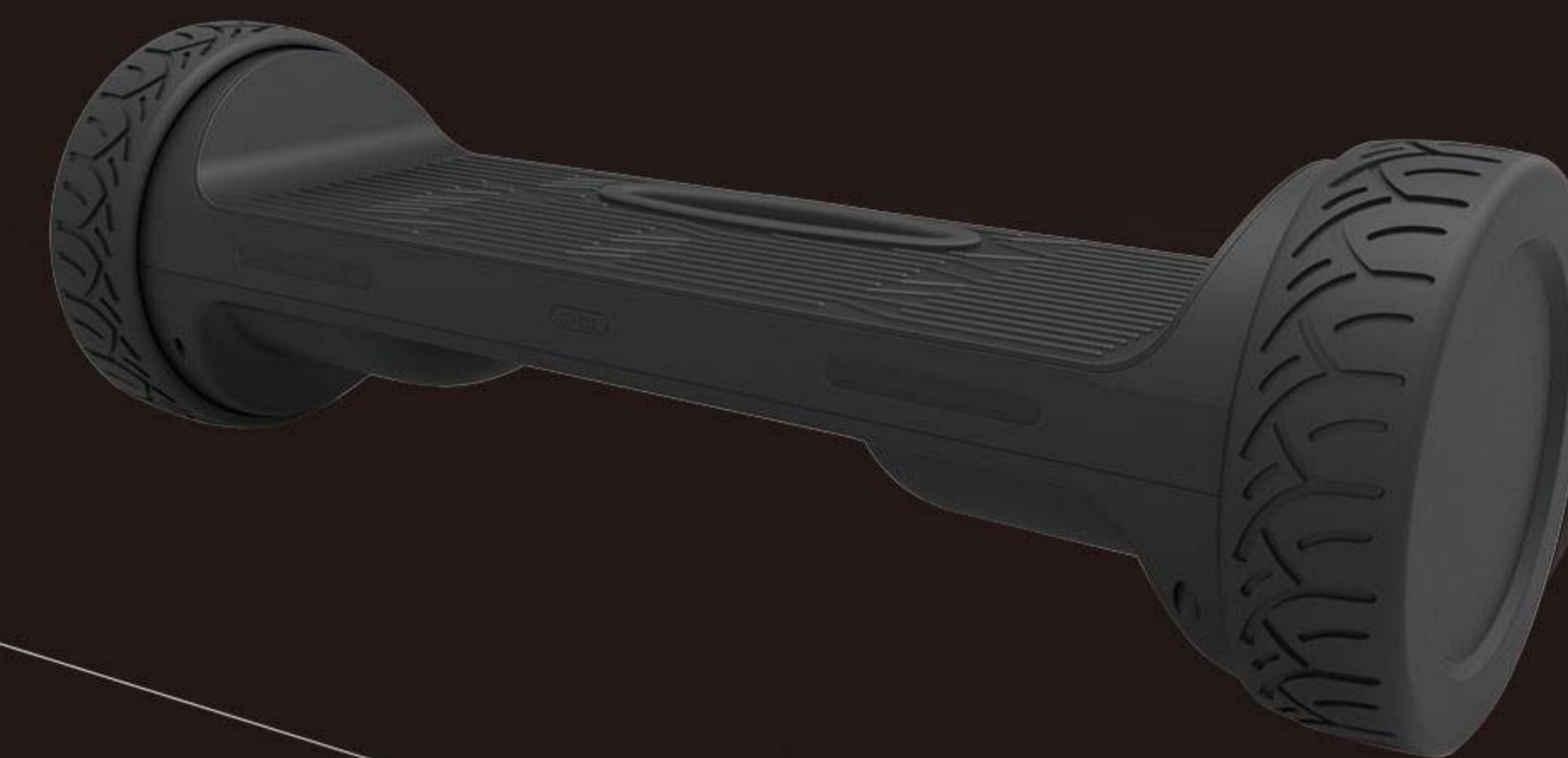
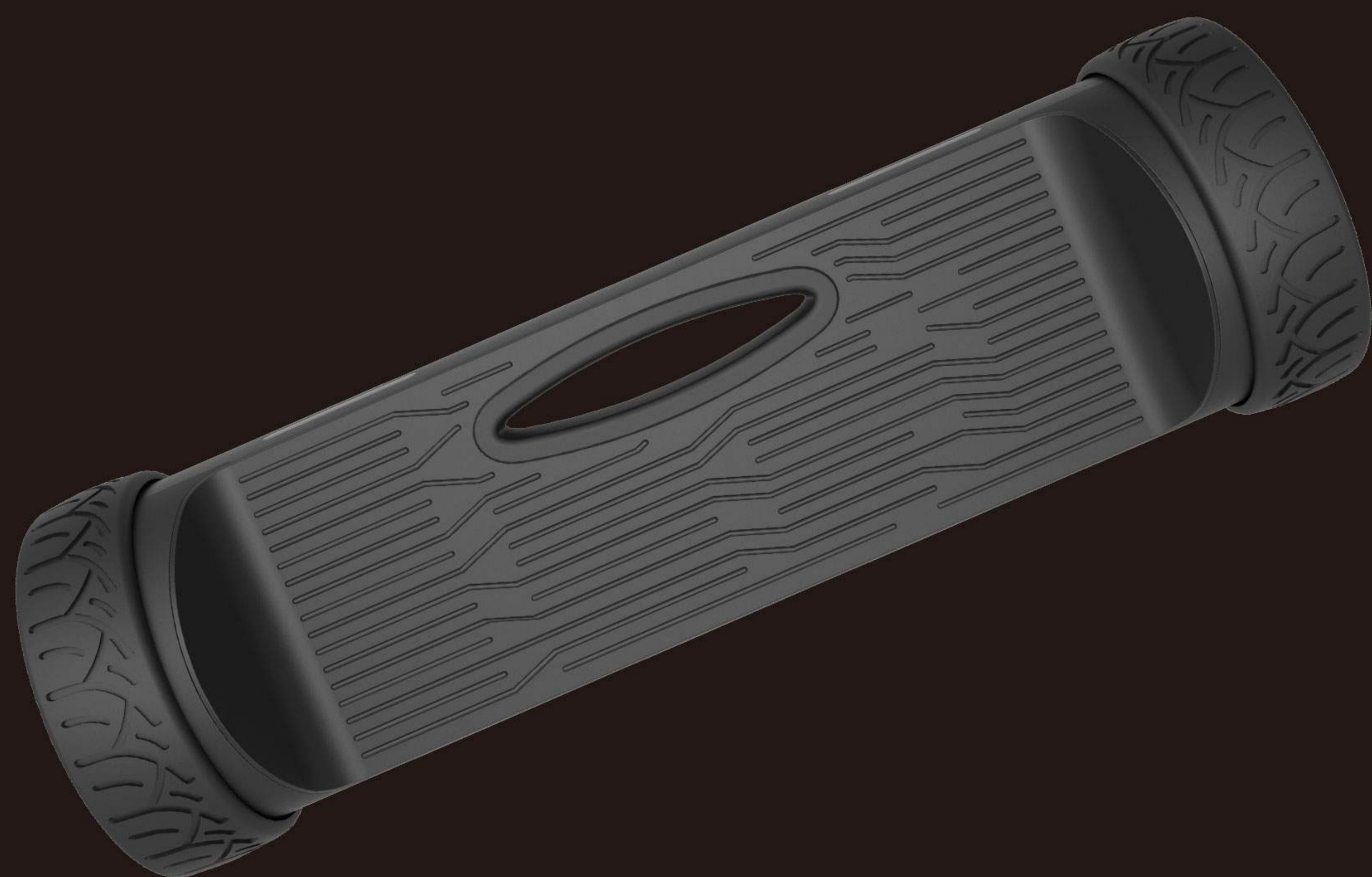
LWHB-21

HOVER BOARD

- ◎ 电池/Battery
- ◎ 充电时间/Charge Time
- ◎ 产品尺寸/Dimension
- ◎ 包装/Packing
- ◎ 承重/Max Loading
- ◎ 毛/净重/GW/NW
- ◎ 装柜量/Container Capacity
- ◎ 包装尺寸/Package Size

36V 4AH
 2-3HOURS
 70X24X25CM
 1PC/CTN
 120KGS
 13/11.5KGS
 1300PCS/40HQ
 72X26X26M



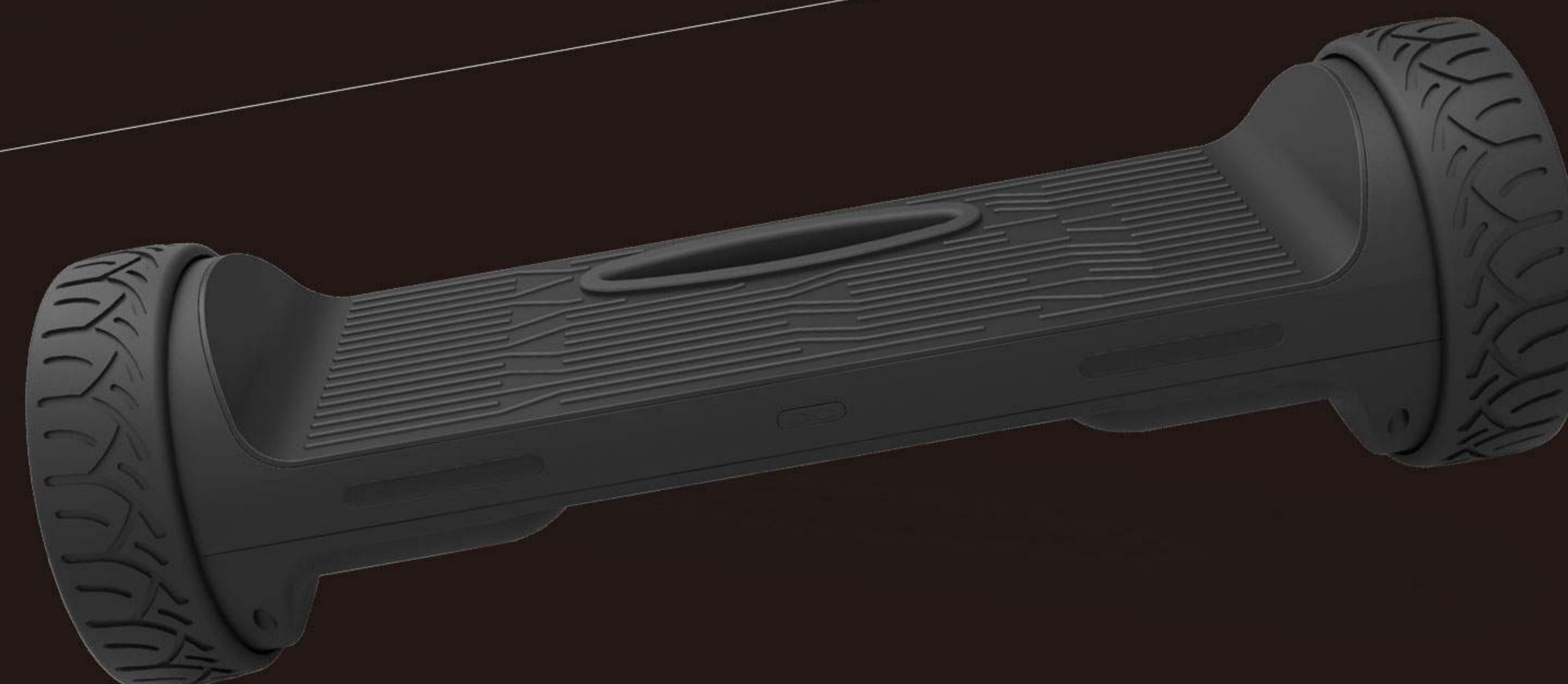


- ◎ 续航时间/Time | 45MINS
- ◎ 电机/Motor | 250W
- ◎ 轮子尺寸/Tire Size | 6.5INCH
- ◎ 速度/Max Speed | 12KM/H

LWHB-22

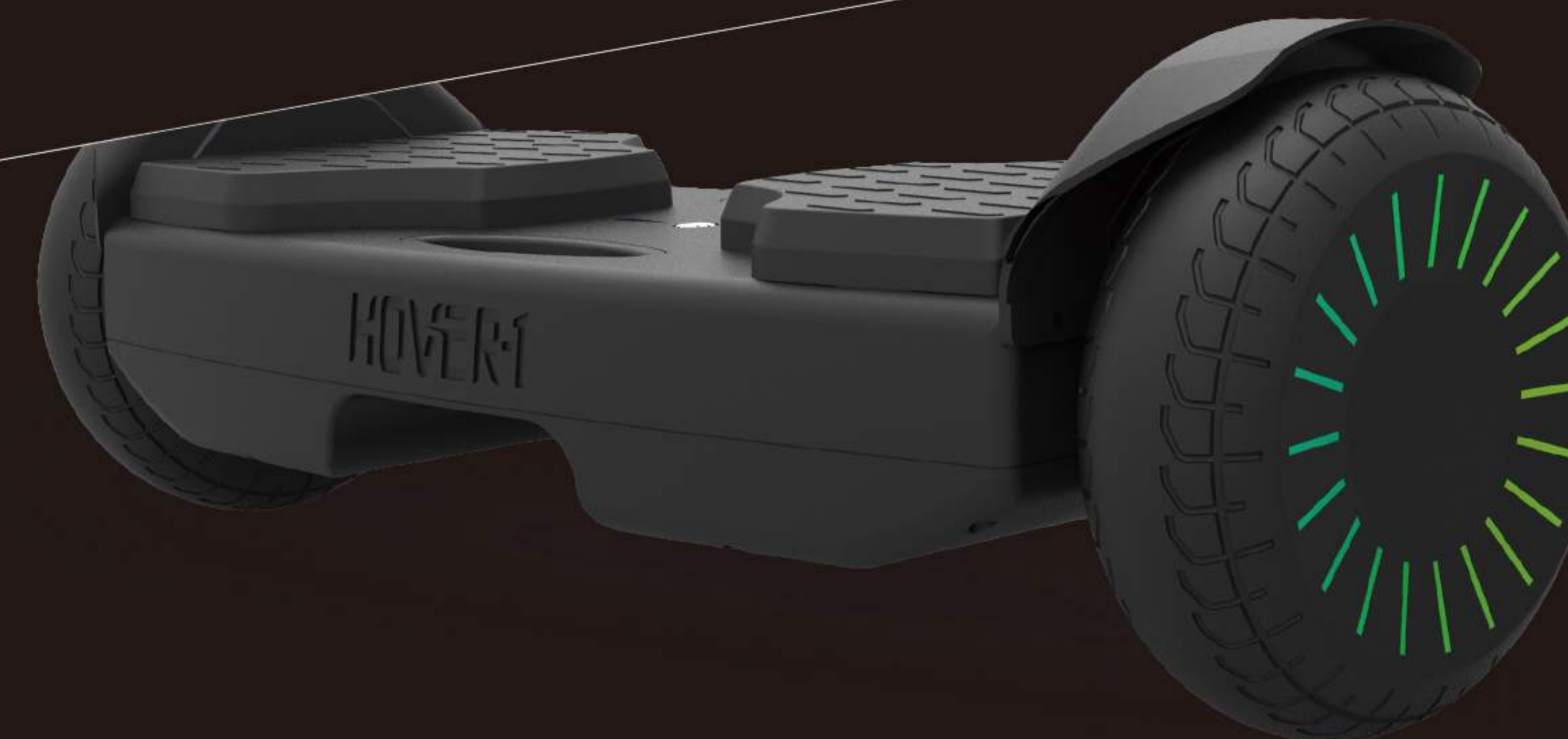
HOVER BOARD

- ◎ 电池/Battery | 36V 4AH
- ◎ 充电时间/Charge Time | 2-3HOURS
- ◎ 产品尺寸/Dimension | 65X22X21CM
- ◎ 包装/Packing | 1PC/CTN
- ◎ 承重/Max Loading | 125KGS
- ◎ 毛/净重/GW/NW | 12/10KGS
- ◎ 装柜量/Container Capacity | 720PCS/20GP 1470PCS/40GP
- ◎ 包装尺寸/Package Size | 1630PCS/40HQ
- ◎ 包装尺寸/Package Size | 72X28X29CM





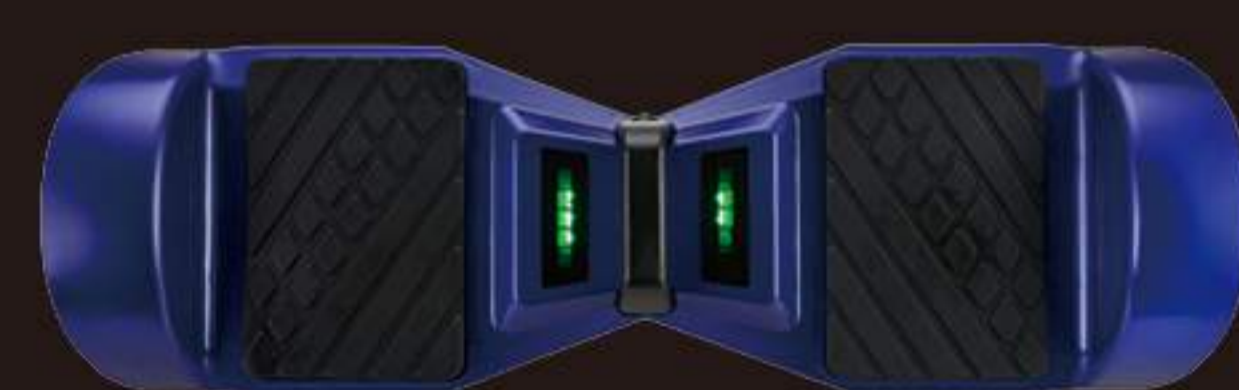
- ◎ 续航时间/Time 30MINS
- ◎ 电机/Motor 250W
- ◎ 轮子尺寸/Tire Size 6.5INCH
- ◎ 速度/Max Speed 12KM/H



LWHB-23

HOVER BOARD

- ◎ 电池/Battery 36V 2AH
- ◎ 充电时间/Charge Time 2-3HOURS
- ◎ 产品尺寸/Dimension 65X22X21CM
- ◎ 包装/Packing 1PC/CTN
- ◎ 承重/Max Loading 125KGS
- ◎ 毛/净重/GW/NW 12/10KGS
- ◎ 装柜量/Container Capacity 750pcs/20'GP, 1600pcs/40'GP, 1850pcs/40'HQ
- ◎ 包装尺寸/Package Size 62X25X23CM



| | |
|------------------|---------|
| ◎ 续航时间/Time | 30MINS |
| ◎ 电机/Motor | 250W |
| ◎ 轮子尺寸/Tire Size | 6.5INCH |
| ◎ 速度/Max Speed | 12KM/H |

LWHB-24

HOVER BOARD

| | |
|--------------------------|---|
| ◎ 电池/Battery | 36V 2AH |
| ◎ 充电时间/Charge Time | 2-3HOURS |
| ◎ 产品尺寸/Dimension | 64.5X20X19CM |
| ◎ 包装/Packing | 1PC/CTN |
| ◎ 承重/Max Loading | 120KGS |
| ◎ 毛/净重/GW/NW | 12.5/11.8KGS |
| ◎ 装柜量/Container Capacity | 620pcs/20'GP, 1300pcs/40'GP, 1500pcs/40'HQ |
| ◎ 包装尺寸/Package Size | 70X26X24CM |





LWHB-25

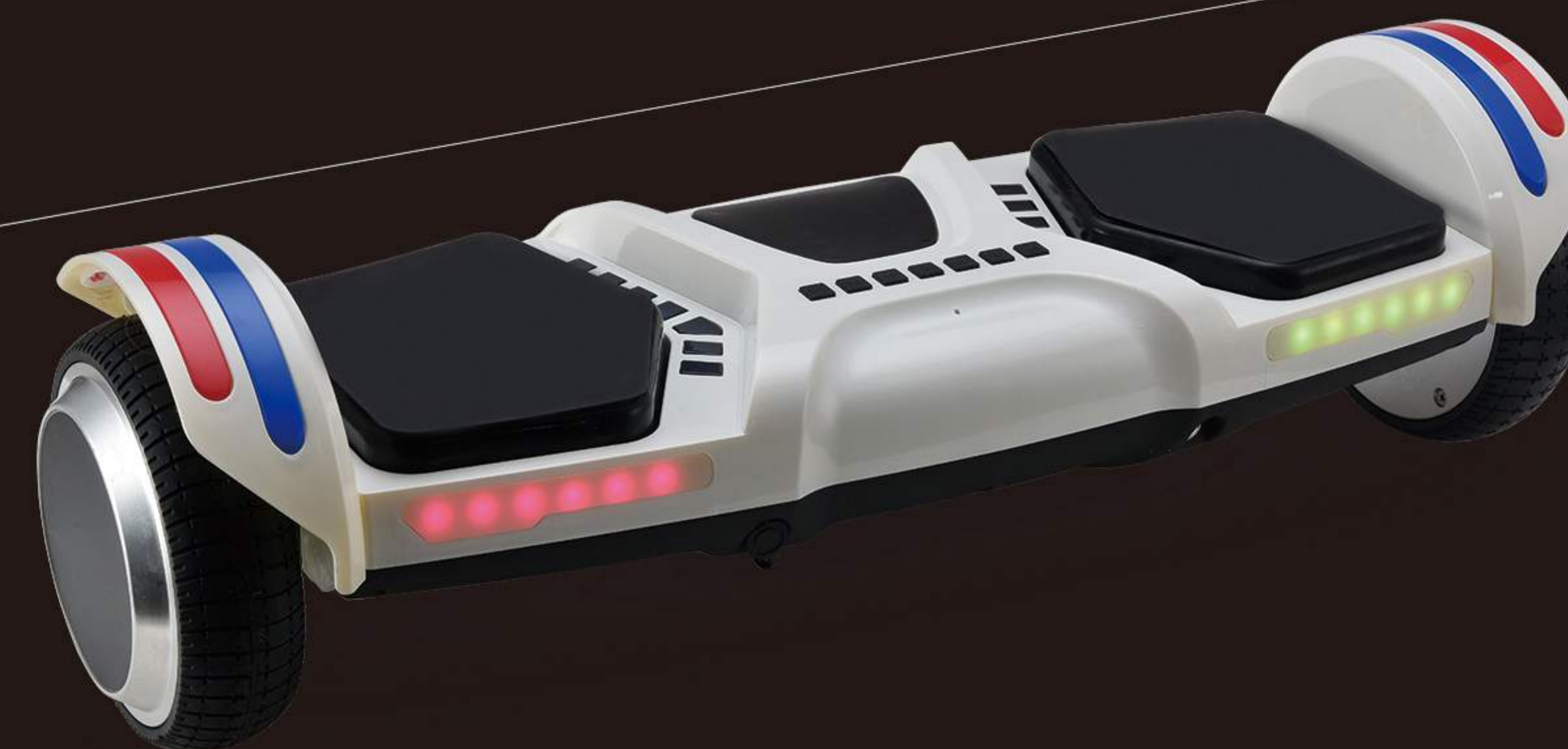
HOVER BOARD

- ◎ 电池/Battery
- ◎ 充电时间/Charge Time
- ◎ 产品尺寸/Dimension
- ◎ 包装/Packing
- ◎ 承重/Max Loading
- ◎ 毛/净重/GW/NW
- ◎ 装柜量/Container Capacity
- ◎ 包装尺寸/Package Size

36V 2AH
 2-3HOURS
 65X22X21CM
 1PC/CTN
 130KGS
 15/13.6KGS
 600pcs/20'GP, 1250/40'GP,
 1450pcs/40'HQ
 70X26X25CM



- ◎ 续航时间/Time
 - ◎ 电机/Motor
 - ◎ 轮子尺寸/Tire Size
 - ◎ 速度/Max Speed
- | |
|---------|
| 30MINS |
| 250W |
| 6.5INCH |
| 12KM/H |





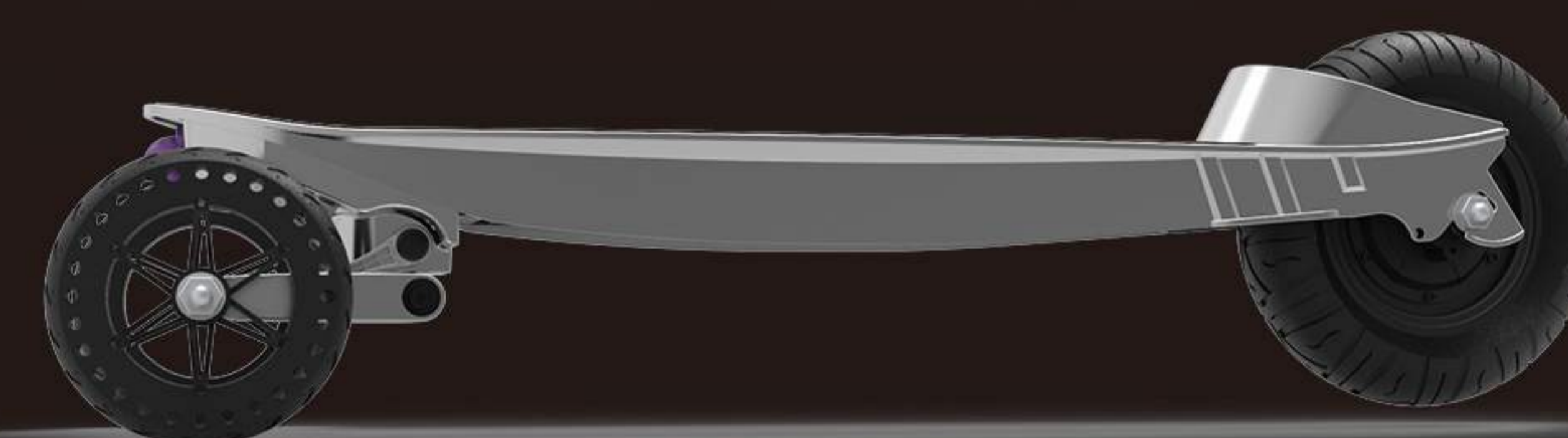
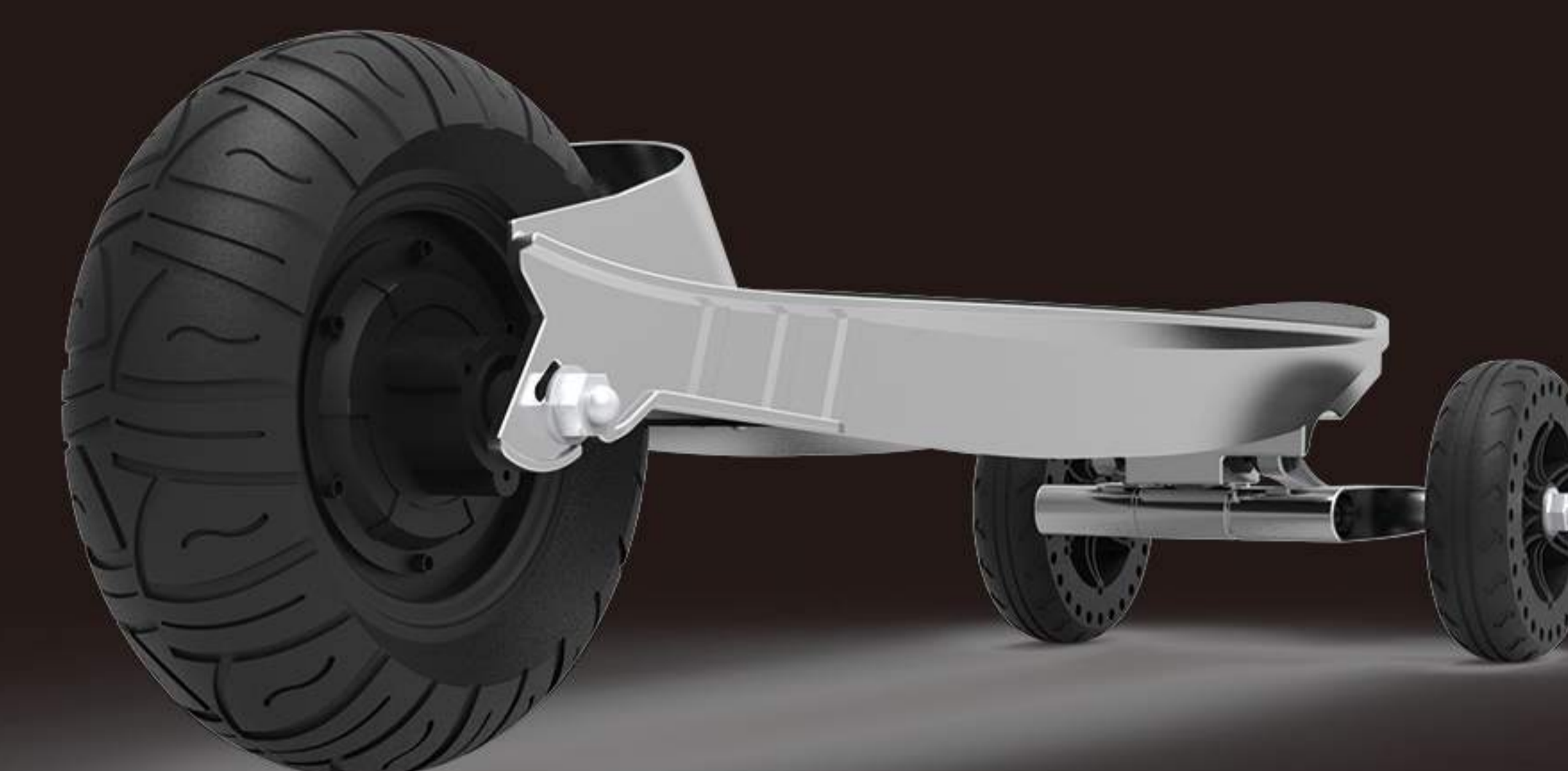
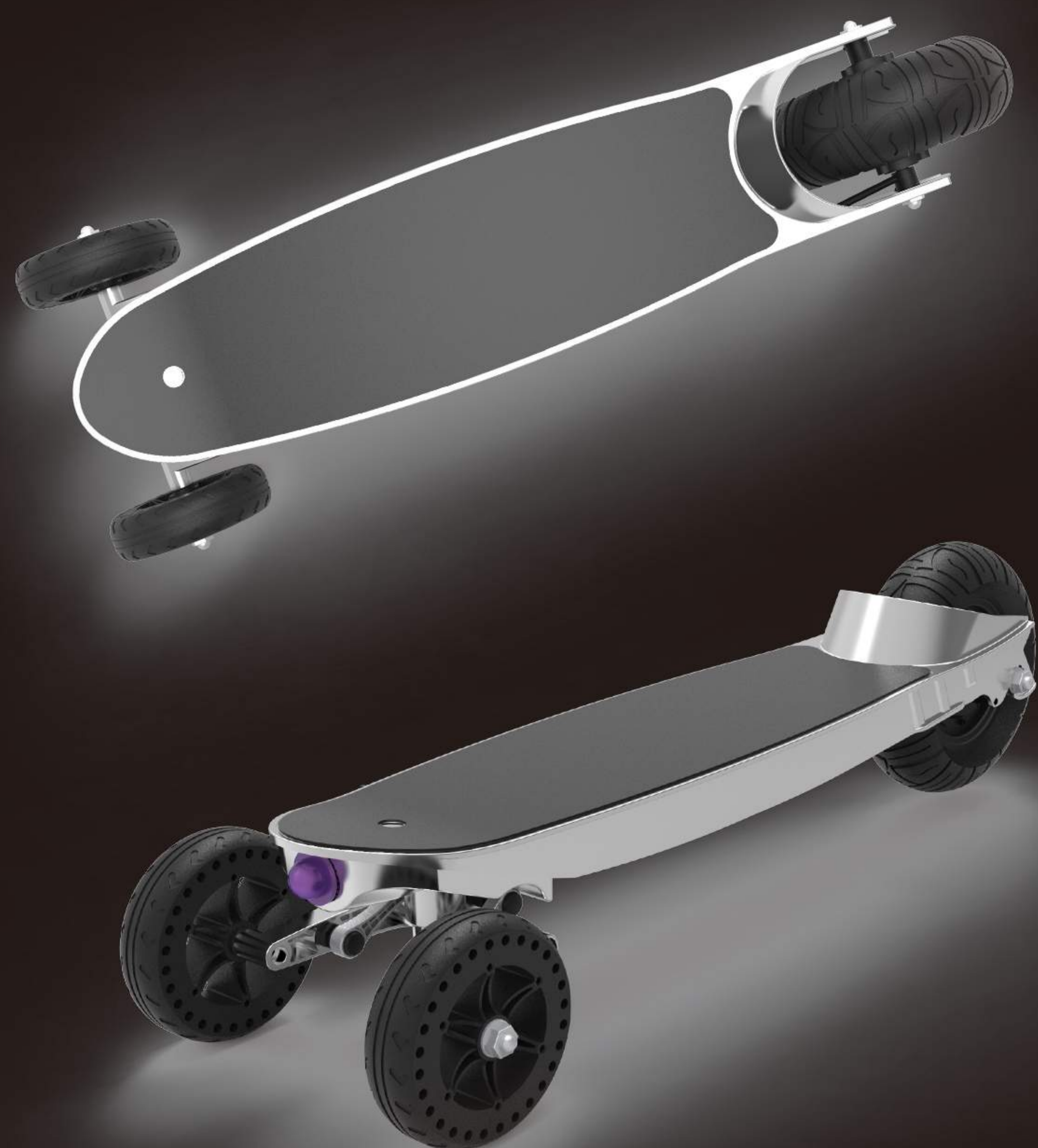
- ◎ 续航里程/Range | 25KM
- ◎ 电机/Motor | 250W
- ◎ 轮子尺寸/Tire Size | 8.5INCH
- ◎ 速度/Max Speed | 30KM/H

ES12

ELECTRIC SCOOTER

- ◎ 电池/Battery | 36V 5.2AH
- ◎ 充电时间/Charge Time | 2-3HOURS
- ◎ 产品尺寸/Dimension | 102X43X113CM
- ◎ 包装/Packing | 1PC/CTN
- ◎ 承重/Max Loading | 120KGS
- ◎ 毛/净重/GW/NW | 13/12KGS
- ◎ 装柜量/Container Capacity | 800PCS/40HQ
- ◎ 包装尺寸/Package Size | 109X21X36CM





ES13
ELECTRIC SCOOTER

- | | |
|------------------|----------|
| ◎ 电池/Battery | 48V 10AH |
| ◎ 续航里程/Range | 30KM |
| ◎ 电机/Motor | 500W |
| ◎ 轮子尺寸/Tire Size | 8/12INCH |
| ◎ 速度/Max Speed | 35KM/H |



LWES-19
ELECTRIC SCOOTER

- ◎ 电池/Battery 24V 4AH
- ◎ 充电时间/Charge Time 2-3HOURS
- ◎ 产品尺寸/Dimension 98X115X15CM
- ◎ 包装/Packing 1PC/CTN
- ◎ 承重/Max Loading 130KGS
- ◎ 毛/净重/GW/NW 15/13.6KGS
- ◎ 装柜量/Container Capacity 2000PCS/40HQ
- ◎ 包装尺寸/Package Size 102X15X19CM

- ◎ 续航里程/Range 15KM
- ◎ 电机/Motor 150W
- ◎ 轮子尺寸/Tire Size 5.5INCH
- ◎ 速度/Max Speed 20KM/H

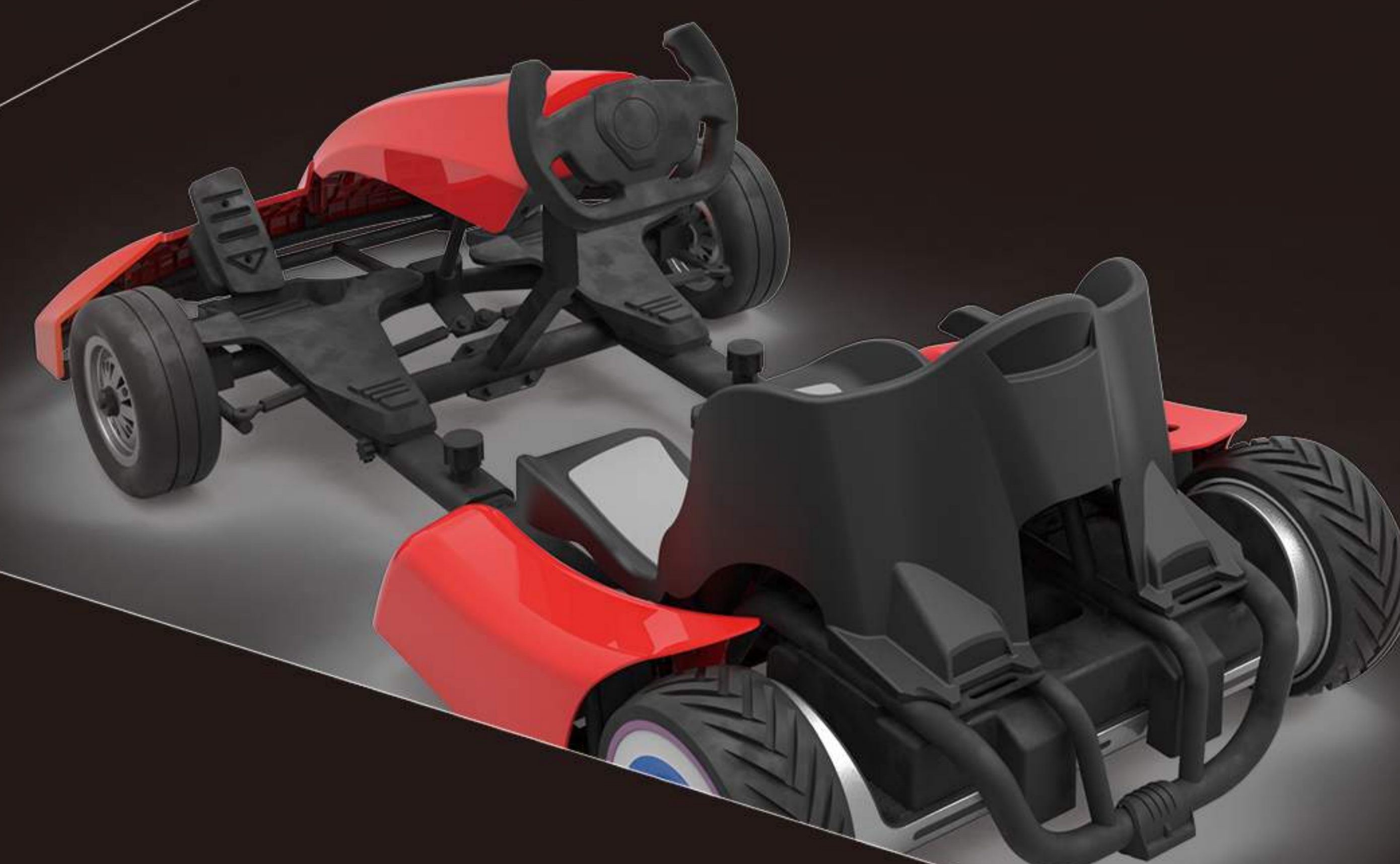


- ◎ 续航里程/Range 20KM
- ◎ 电机/Motor 250W
- ◎ 轮子尺寸/Tire Size 5.5INCH
- ◎ 速度/Max Speed 20KM/H

LWES-20
ELECTRIC SCOOTER

- ◎ 电池/Battery 36V 4AH
- ◎ 充电时间/Charge Time 2-3HOURS
- ◎ 产品尺寸/Dimension 105.4X43.6X48CM
- ◎ 包装/Packing 1PC/CTN
- ◎ 承重/Max Loading 120KGS
- ◎ 毛/净重/GW/NW 15.8/12KGS
- ◎ 装柜量/Container Capacity 510PCS/40HQ
- ◎ 包装尺寸/Package Size 86X47.5X39CM





| | |
|------------------|--------|
| ◎ 续航时间/Time | 45MINS |
| ◎ 电机/Motor | 250W |
| ◎ 轮子尺寸/Tire Size | 9INCH |
| ◎ 速度/Max Speed | 35KM/H |

LWGK-60

GOKART KIT

| | |
|--------------------------|-------------|
| ◎ 电池/Battery | 36V 4AH |
| ◎ 充电时间/Charge Time | 2-3HOURS |
| ◎ 产品尺寸/Dimension | 98X115X15CM |
| ◎ 包装/Packing | 1PC/CTN |
| ◎ 承重/Max Loading | 130KGS |
| ◎ 毛/净重/GW/NW | 15/13.6KGS |
| ◎ 装柜量/Container Capacity | 142PCS/40HQ |
| ◎ 包装尺寸/Package Size | 110*85*50CM |





- ◎ 续航时间/Time 45MINS
- ◎ 电机/Motor 250W
- ◎ 轮子尺寸/Tire Size 8INCH
- ◎ 速度/Max Speed 12KM/H

LWGK-70

GOKART

- ◎ 电池/Battery 24V 4AH
- ◎ 充电时间/Charge Time 2-3HOURS
- ◎ 产品尺寸/Dimension 79X65.5X21.3CM
- ◎ 包装/Packing 1PC/CTN
- ◎ 承重/Max Loading 60KGS
- ◎ 毛/净重/GW/NW 13/9.6KGS
- ◎ 装柜量/Container Capacity 495PCS/40HQ
- ◎ 包装尺寸/Package Size 83.5X23.8X67.5CM