

LED Street Light Installation Guide

- Before Installation

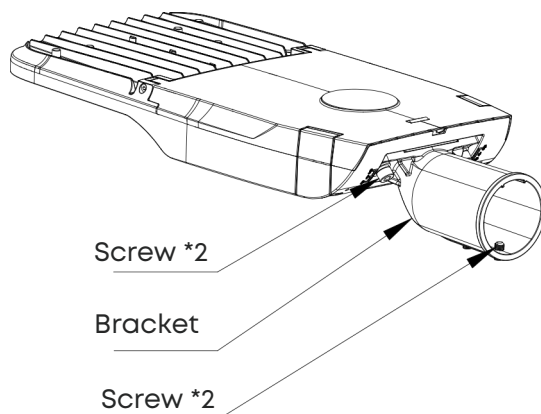
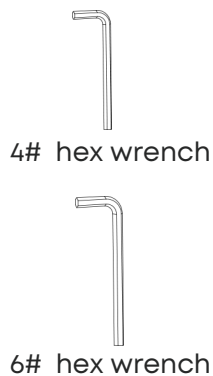
This procedure is designed as an installation aid. Skilled tradespeople that are familiar with general construction and electrical installation techniques should perform the installation. Licensed electricians should provide electrical installation connections. Installations and connections should be done in accordance with all national and local codes and permits. In no way is this document intended to construe warranty or fitness of use of the products described, nor is it intended to provide safety instruction for those installing the product.

WARNING

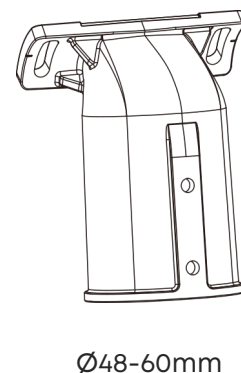
Before proceeding with installation or service maintenance of this product.

- Disconnect power to reduce electrical shock risk.
- Review the entire Installation Guide.
- Inspect this properly packaged product for any damage that may have occurred during transit.
- Verify product application complies with manufacturer design recommendations.
- Verify the availability of necessary tools and incidental material.
- Verify applicable code requirements. Field assembly and installation are subject to acceptance by local inspection authority.
- Appropriate safety equipment to be determined by end user, per applicable safety standards and precautions.

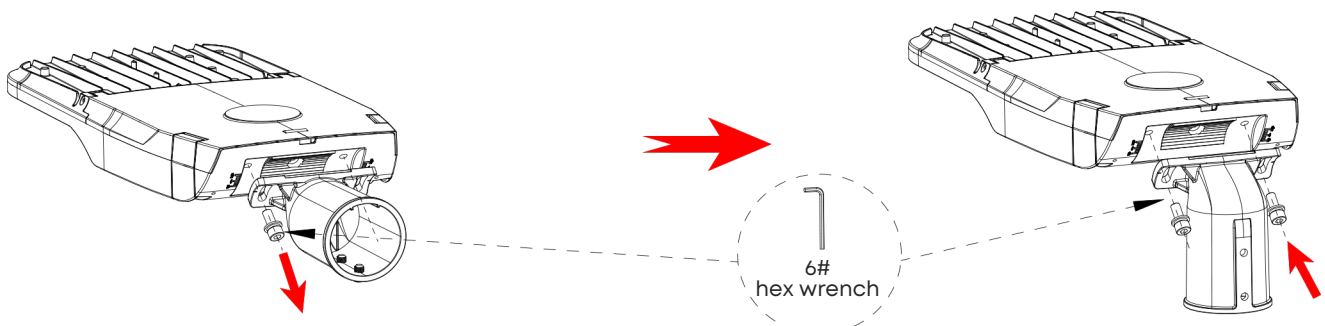
Installation Tools



Suitable for light pole diameter

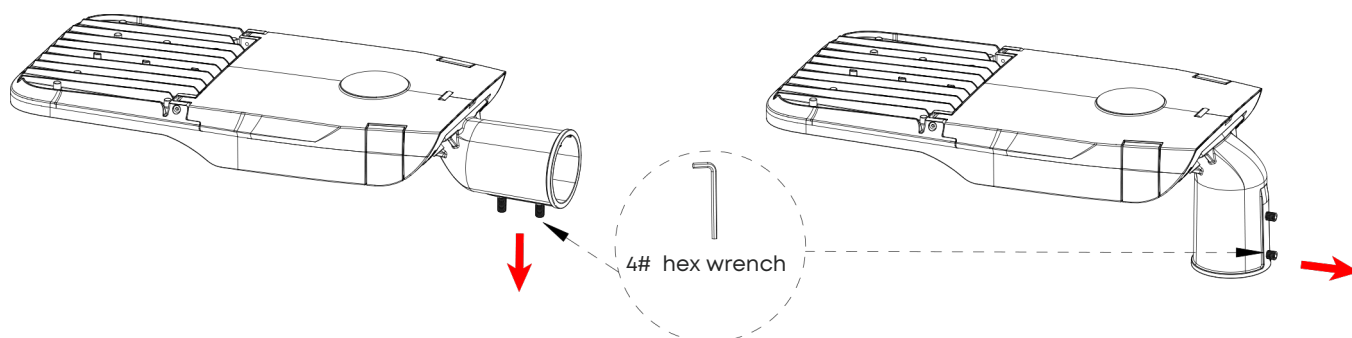


If the fixture is installed by post top, please release the screws on the bracket behind the fixture and remove the bracket first, then turn the bracket in the opposite direction, use a 6# hex wrench to tighten the screws to fix the bracket, as shown below.



- Installation Steps

1. Loosen the 2 screws on the bracket without removing them.



2. Connect the wires between the bracket of the fixture and the lamp pole (connect the L, and N, GND correspond to each) then insert the bracket into the lamp pole according to the arrow direction, as shown below.

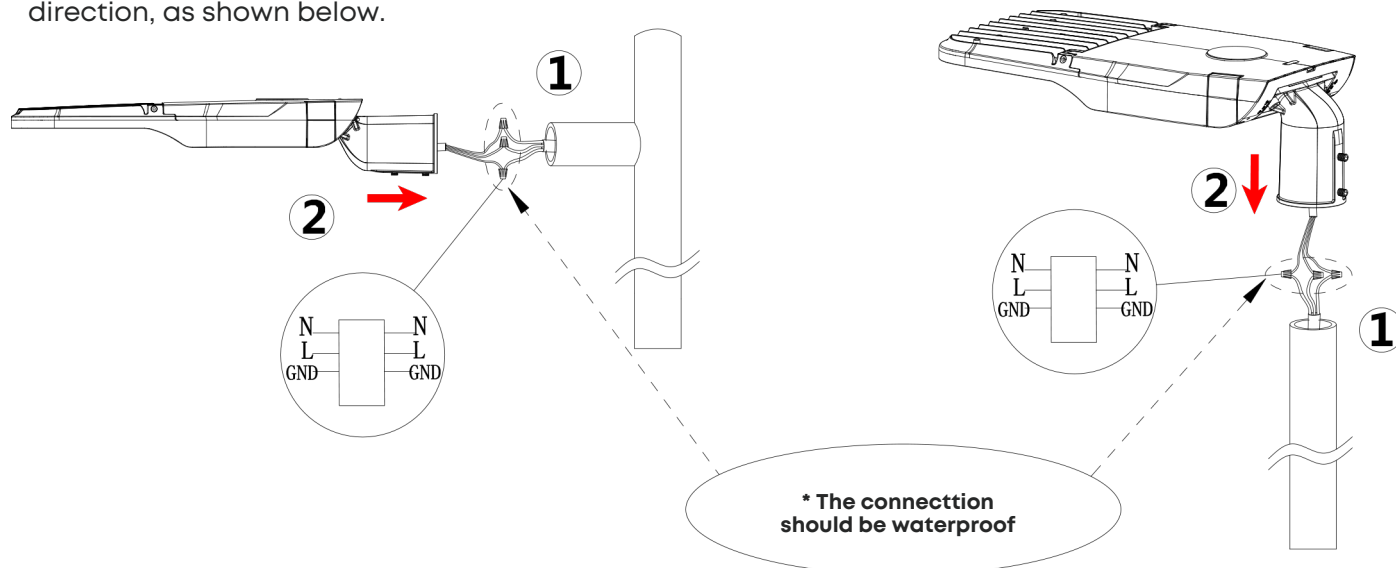
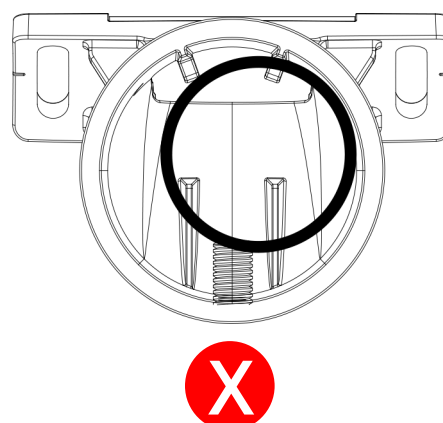
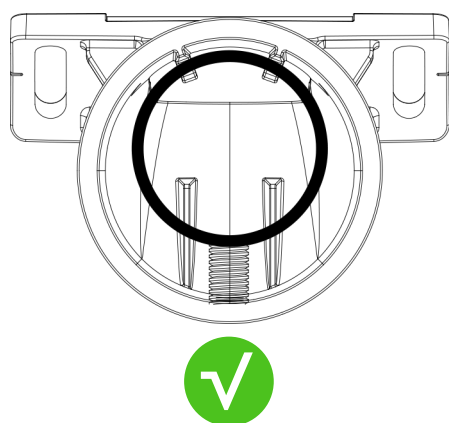
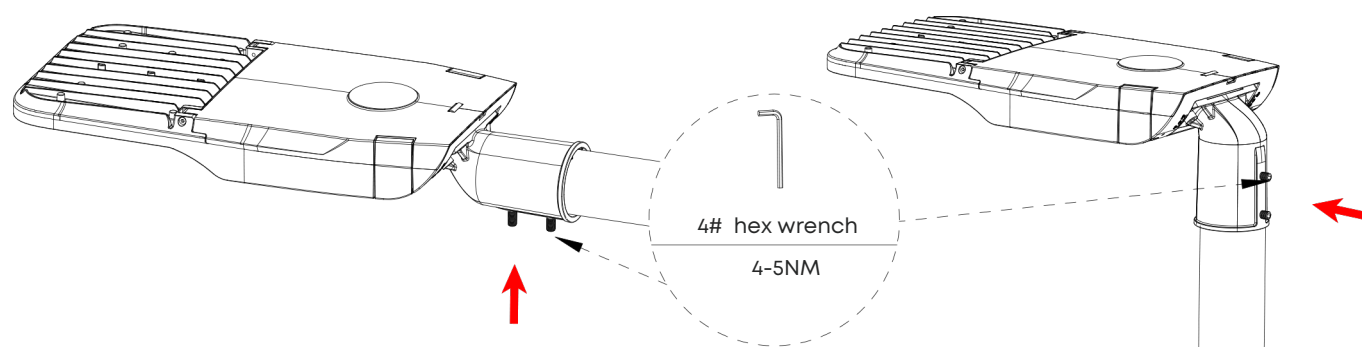


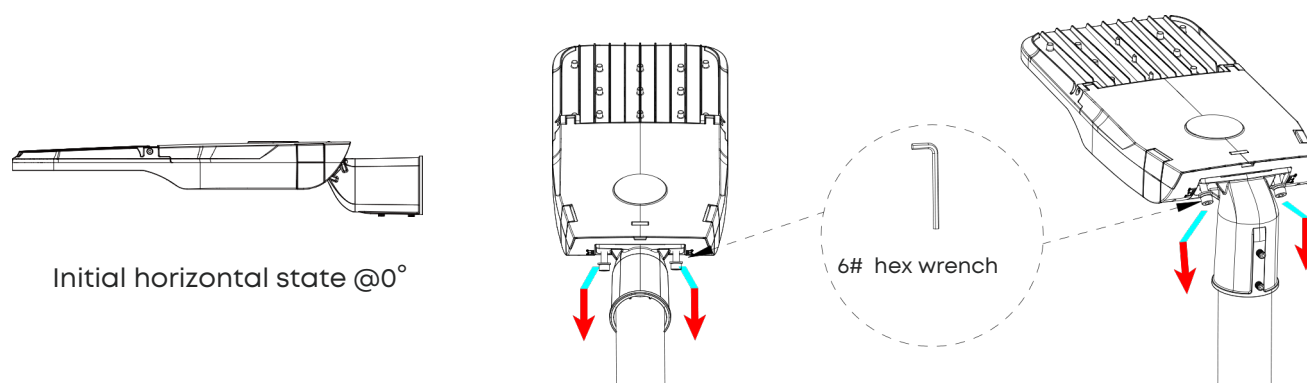
Diagram of correct and incorrect fixation of lamp pole and bracket.



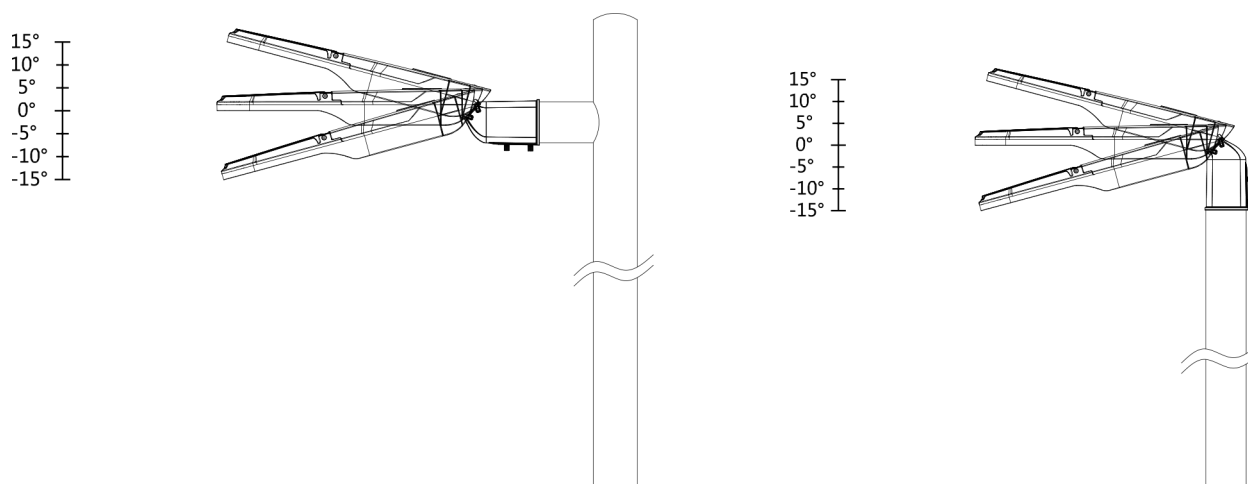
3. Tighten the two screws



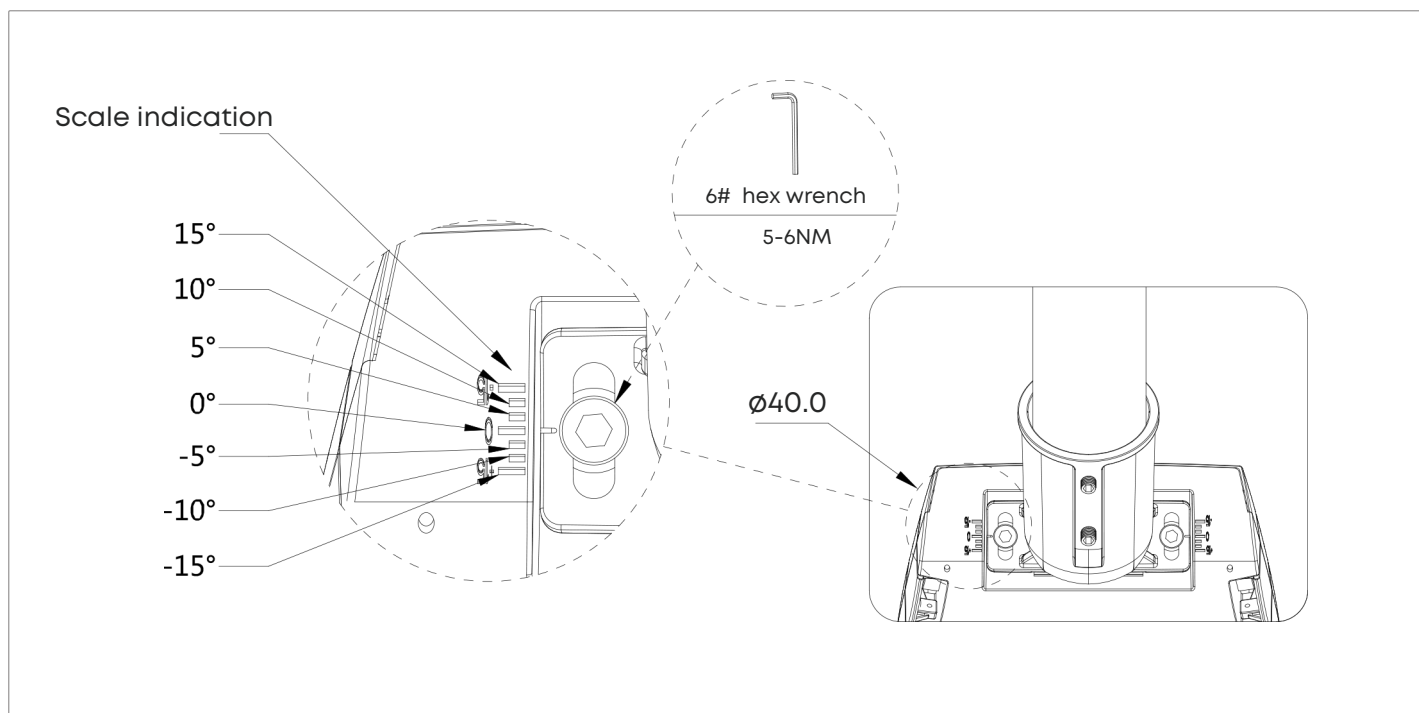
4. If angle adjustment is required, loosen the two screws by 2-3 turns, ensuring they are not completely removed. Proceed to align the component before retightening.



5. Rotate the fixture to the proper angle based on the actual requirement, then tighten two screws behind the fixture on the bracket.



- Review before adjusting the lateral angle of the fixture

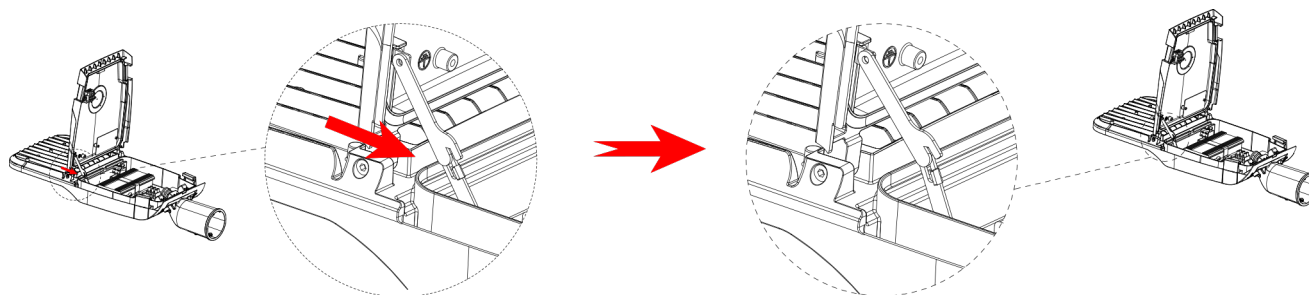


-Attention

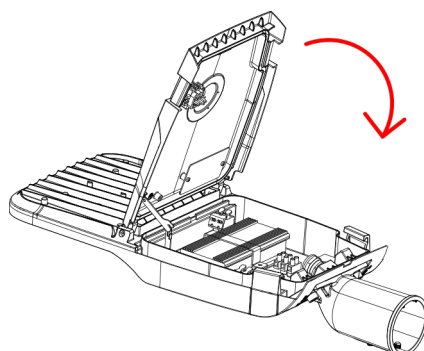
In case the back cover needs to be opened for maintenance, please follow the instruction to close the cover, as shown below.

Caution: Improper operation will damage the support rod, and human operation is not within the scope of the aftersales service.

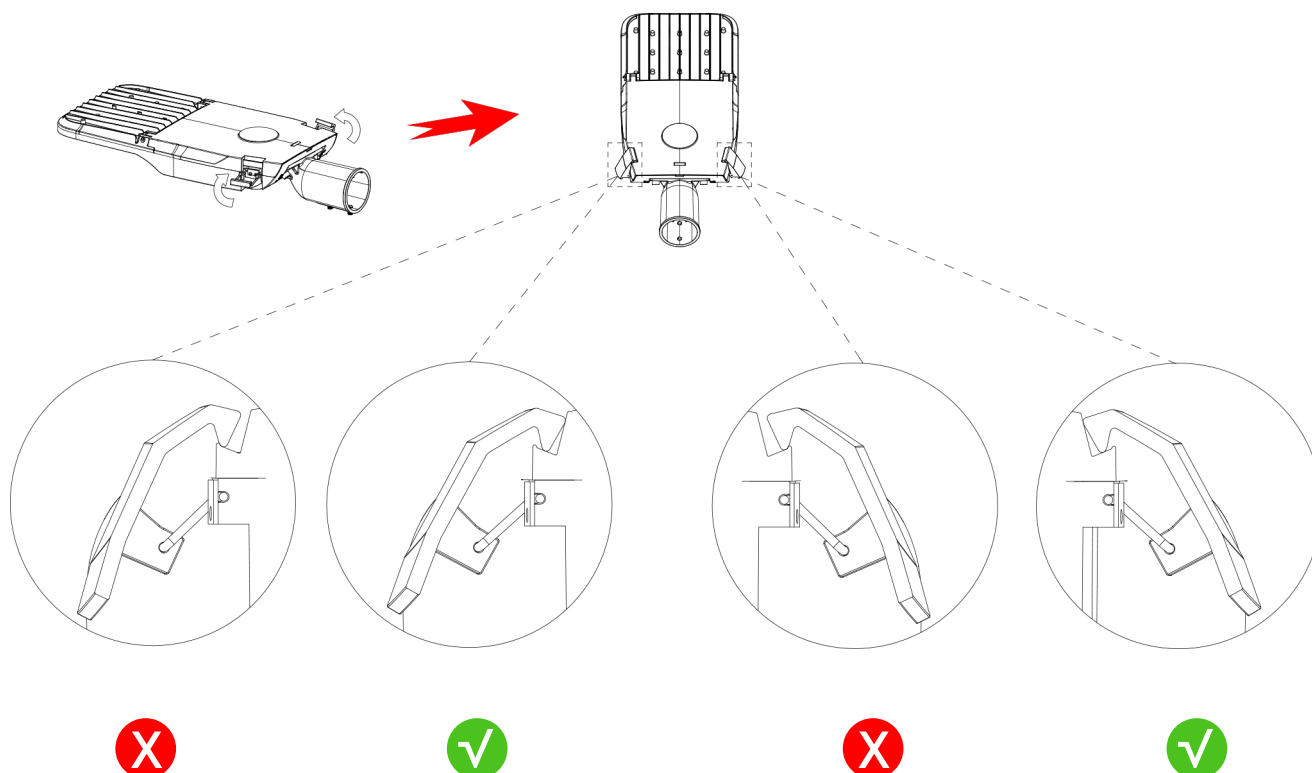
1. Move the support rod in the direction of the arrow



2. Close the back cover

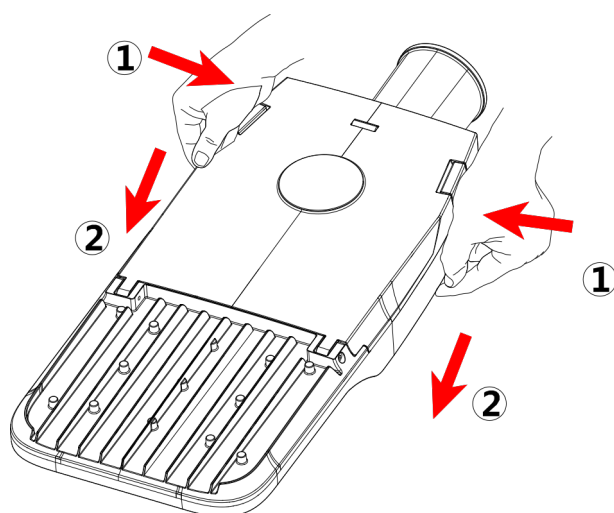


3. Place the latch correctly in the groove on the rear cover.



4. Press the buckle

- ① Press the buckle towards the inside of the lamp;
- ② Simultaneously press down the buckle.



Press the clasp, do not knock.

