

# **F series product introduction and installation steps**

**Version 3.0**

# Cabinet and module views



## Module details



Stainless steel front protection and guard locks improve the flatness of the connection between the module and the cabinet and improve the firmness of the module.

Die-cast aluminum bottom shell design improves module flatness, module strength, and module heat dissipation

Integrated power and signal interface design, IP65 waterproof interface, reduces the failure rate of power and signal connections.

## Cabinet details



The full-profile aluminum cabinet improves the cabinet's corrosion resistance, reduces the cabinet's weight, reduces the cabinet's thickness, and improves the cabinet's accuracy.

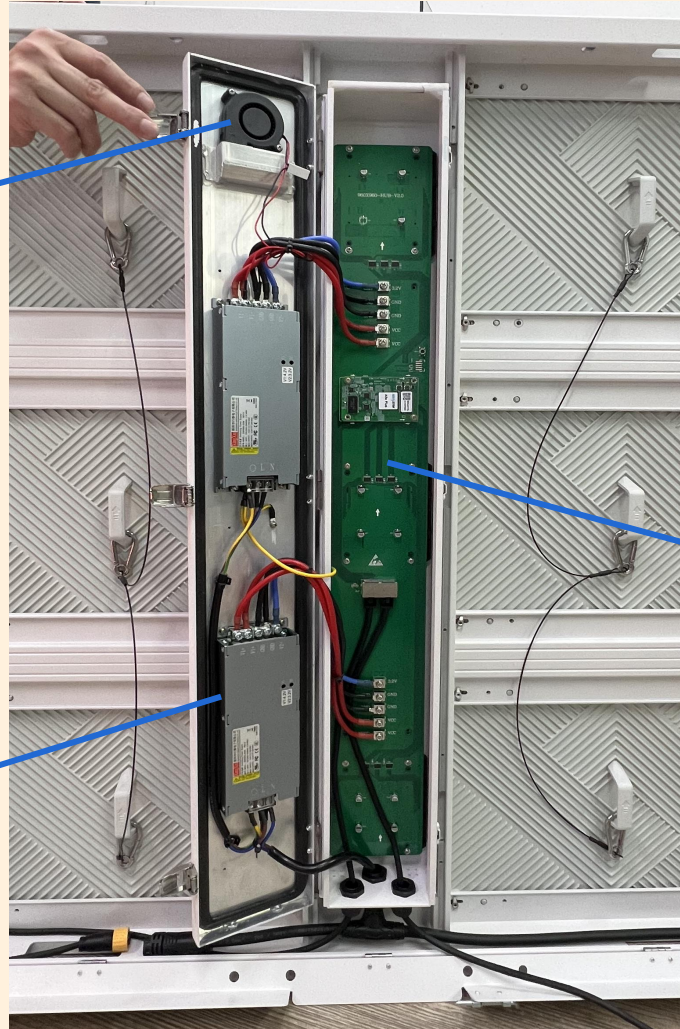


Power cord and network cable protection slots provide a higher level of waterproof protection. Make the cabinet more beautiful after installation.

## Cabinet details

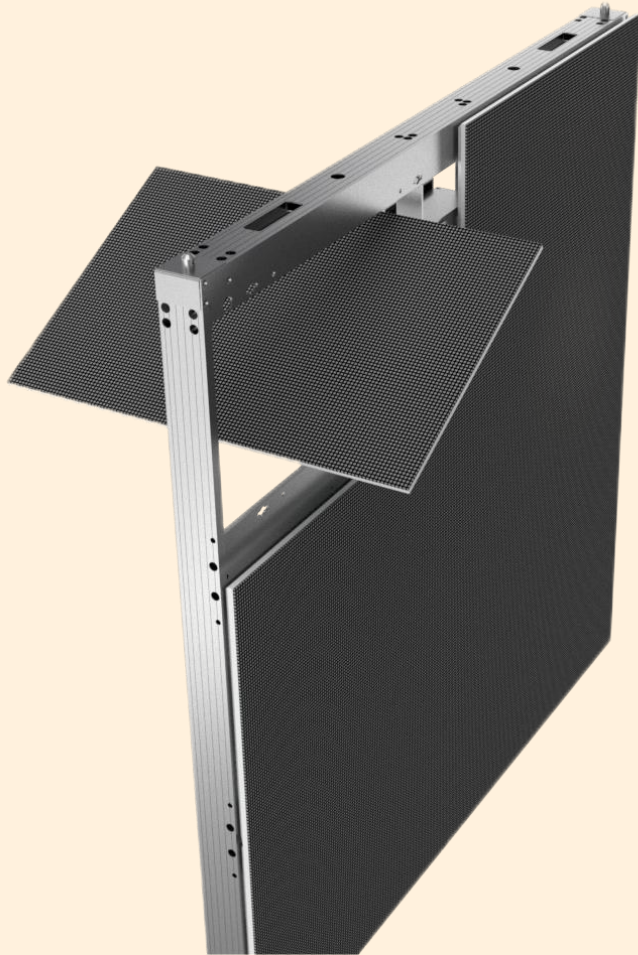
Eddy current cooling fan improves heat dissipation efficiency by 30% than traditional fans.

CE verified power supply, fanless design, heat dissipation through silica gel, 50% higher heat dissipation efficiency than traditional power supply, achieving more efficient power output.



HUB adapter board design, reduces network cable failure rate, increases network cable transmission rate, and improves maintenance efficiency.

## Maintenance details



Front and rear installation design.  
Suitable for wall installation projects and  
roof installation projects.

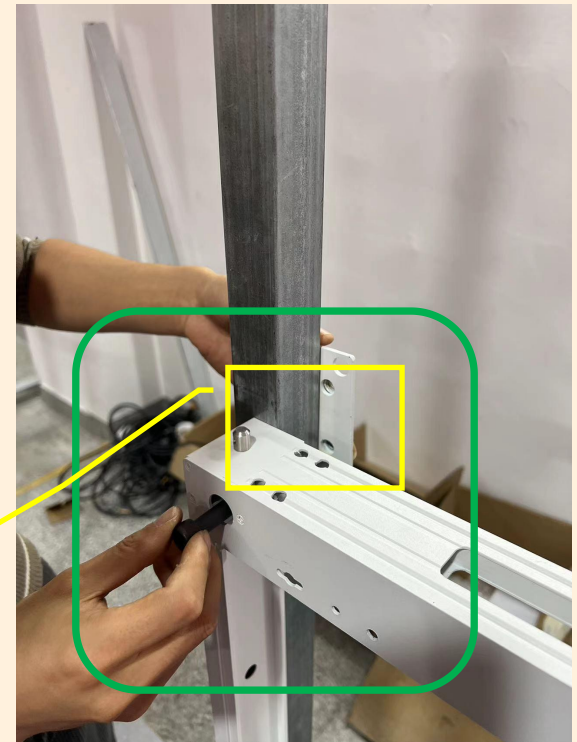
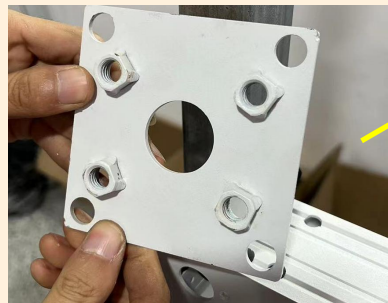


## Installation steps(Front installation for Wall project )

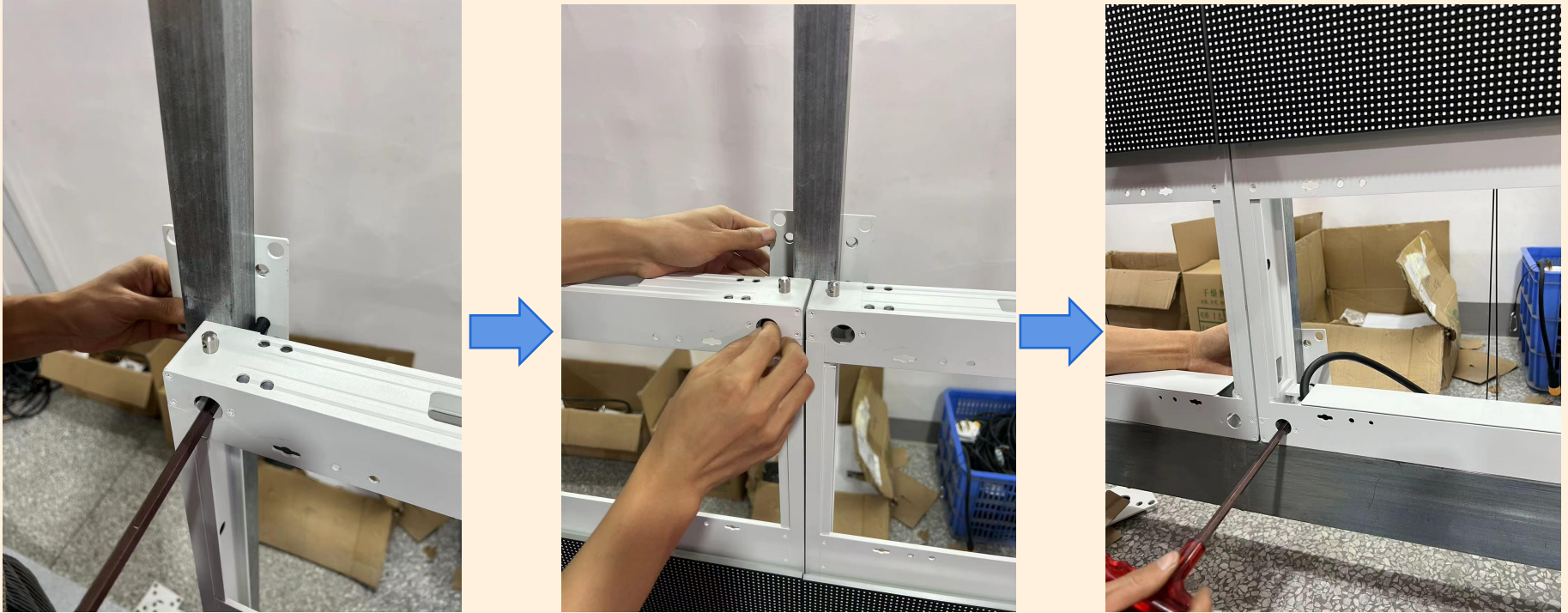


Step 1 :First remove the modules in the first and third rows of the cabinet.

Step 2:Use M10\*70 bolts to pass through the holes in the four corners of the box and lock them on the connector.



## Installation steps(Front installation for Wall project)



Step 3 :Use M10\*70 bolts to fix the connector at the corresponding positions to connect the left, right, upper and lower cabinets.



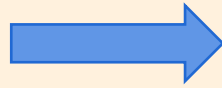
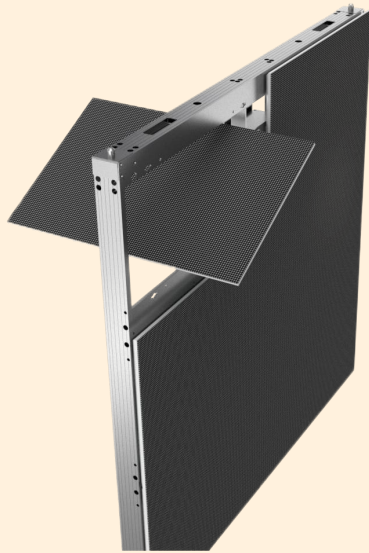
## Installation steps(Front installation for Wall project)



Step 4: Open the power cord and network cable protection slot, pass the power cord and network cable through the cabinet wiring holes, and then connect them.

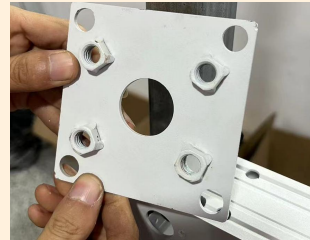
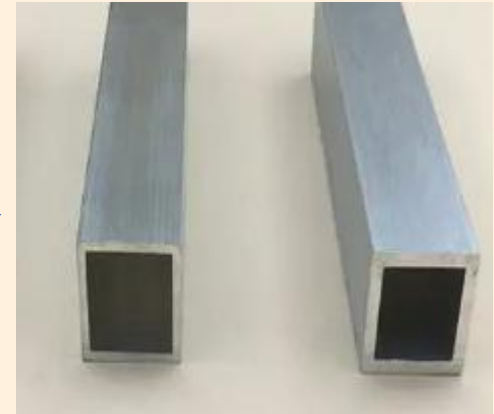
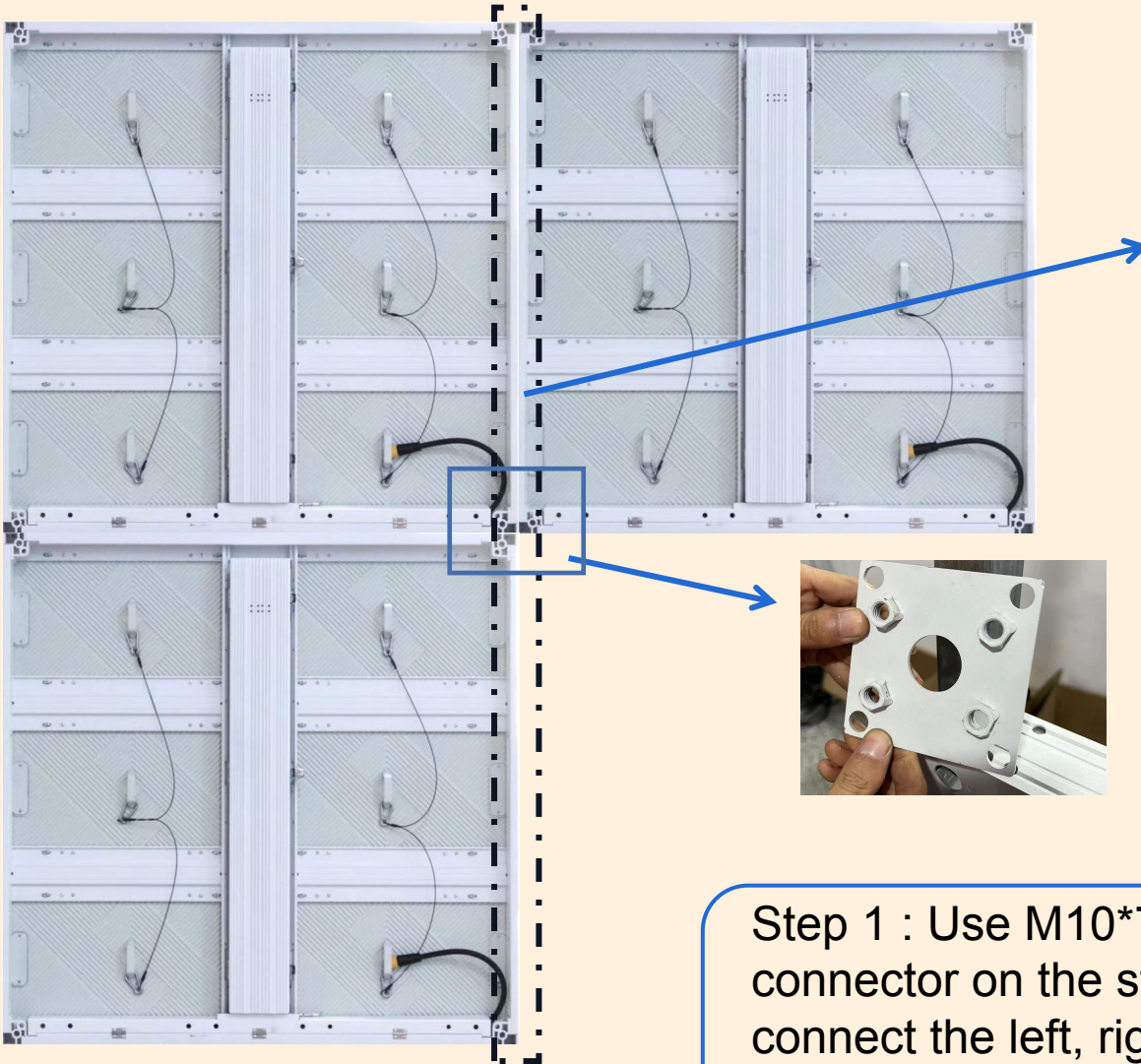


## Installation steps(Front installation for Wall project)



Step 5 :Put the module back into the cabinet and lock it with the T-shaped key.

## Installation steps(Rear-maintenance installation for Roof project)



Step 1 : Use M10\*70 bolts to fix the connector on the steel structure and connect the left, right, upper and lower cabinets.

## Installation steps(Rear-maintenance installation for Roof project)



Step 2: Open the power cord and network cable protection slot, pass the power cord and network cable through the cabinet wiring holes, and then connect them.



Thank u

**Thank u**