

Weatherability

For outdoor & marine
Solution dyed polyester fabric

SOLUTION DYED POLYESTER FABRIC - SLDP-6023X

| Item Evento Deportivo | Norm Norma | Test value Valor de prueba | Unit Unidad |
|--|--------------------------|---|--|
| Fabric name Nombre de Fábrica | | 100% Solution dyed polyester fabric Tejido de poliéster 100% teñido en masa | |
| Description Descripción | | Surface waterproof / PU-coating Superficie impermeable / revestimiento de PU | |
| Texture Textura | | Plain/Woven Liso/tejido | |
| Meterial composition Materiales | (EU) No 1007/2011 | 95% Polyester 5% PU | 600D*600D 76T |
| Width Ancho | EN 1773 | 54-126 137-320 | inch cm |
| Weight Peso | EN 12127 | 6.8 235 | oz/yd ² g/m ² |
| Thickness Grosor | ISO 5084 | 15 0.35 | mil mm |
| Hydrostatic Pressure Presión hidrostática | EN 20811 | >8000 >800 | pa mm |
| Water repellency Impermeabilidad | AATCC 22 EN ISO 4920 | >90 | Grade |
| Mold resistance Resistencia al moho | AATCC 30-2017 | Grade 1 | 7 Days |
| Weather resistance Resistencia a la intemperie | ISO 105-B04 | 7-8 | Grade |
| Colour fastness to light Solidez del color a la luz | AATCC16-3 ISO 105-B02 | 500-720Hours: 4 | Hour/grade Grade |
| Colour fastness to rubbing Solidez del color al roce | ISO 105-X12 | 4-5 | Grade |
| Colour fastness to migration Solidez del color a la migración | ISO 105-X10 | 4-5 | Grade |
| Chlorine resistance Resistencia al cloro | ISO 105-E03 | 4-5 | Grade |
| UV resistance Resistencia a los rayos UV | EN 13758-1 | UPF 50+ | |
| Tearing Strength Resistencia al desgarramiento | ASTM D2261-13 | Warp (deformación) >16.9 Weft (trama) >12.8 | Lbf Lbf |
| Tensile Strength Resistencia a la tensión | ASTM D5034-2019 | Warp (deformación) >460 >310 Weft (trama) | Lbf Lbf |
| Abrasion Resistance Resistencia a la abrasión | ASTM D4966-22 | 50000 | Rubs |



Cleaning recommendation

Dirt can be rinsed off using a jet of water (no high pressure). If needed, sponge down or soft brush with a small amount of mild detergent using max. 30 ° C warm water to clean. Strong friction should be avoided. Then repeatedly rinse the fabric with clean water and allow to dry.

Recomendación para la limpieza

La suciedad se puede enjuagar con un chorro de agua (sin alta presión). Si es necesario, use una esponja o un cepillo suave con una pequeña cantidad de detergente suave usando máx. Agua tibia a 30 °C para limpiar. Deben evitarse fricciones fuertes. Luego enjuague repetidamente la tela con agua limpia y déjela secar.

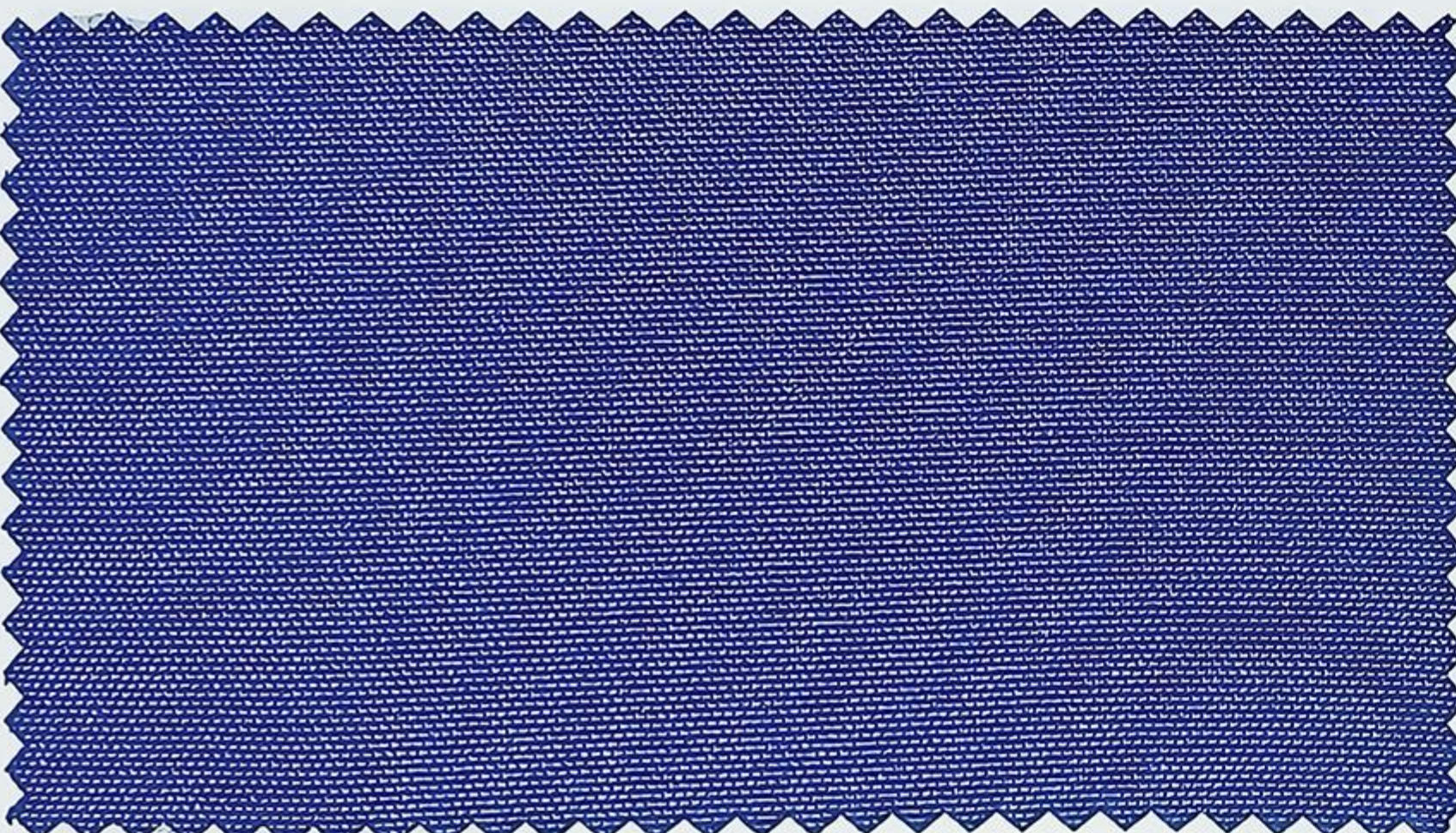
Packing method Método de embalaje Rolls lengthes Longitudes de rollos

Rollled + Wrapped in Plastic Film
Enrollado + Envuelto en Plástico Film
80m (Or according to customer requirements)
80metros (O según la solicitud de longitud del cliente.)

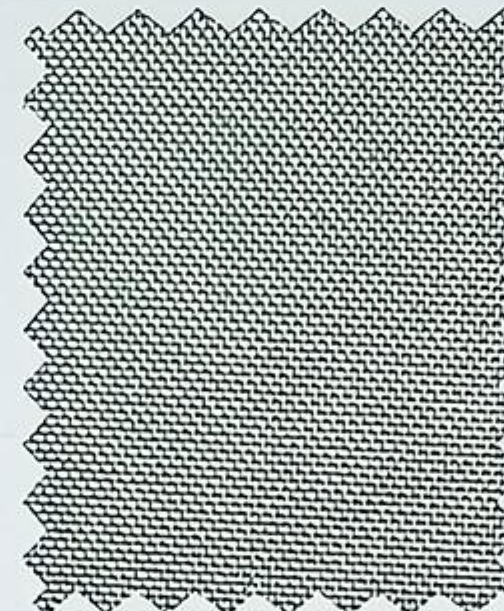
Performance fabric SLDP-6023X



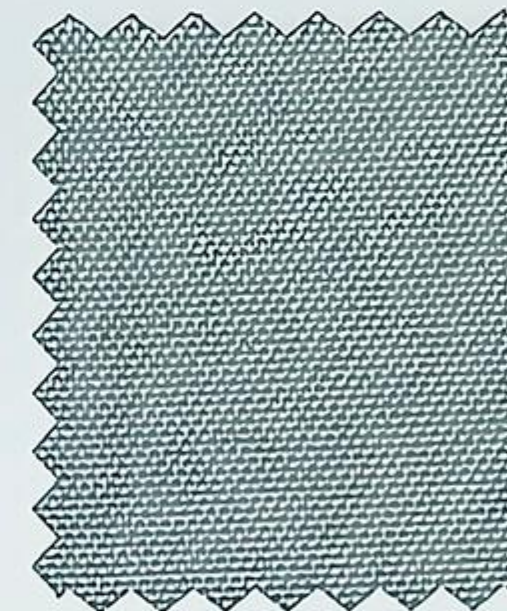
SLDP-602362 SinoRed



SLDP-602382 TB-Blue



SLDP-602456 DesertTaupe



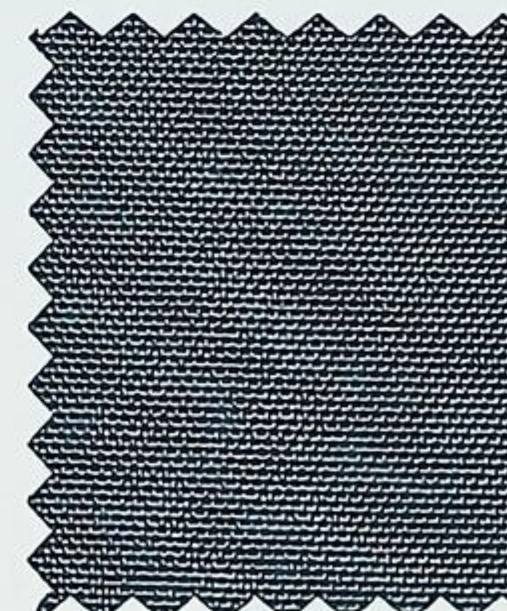
SLDP-602304 Light Grey



SLDP-602441 C-Silver Grey



SLDP-502324 Graphite



SLDP-602302 Dark Grey



SLDP-602421 Charcoal



SLDP-602422 Bristol



SLDP-602303 Coffee



SLDP-602301 Black



SPINNING



SIZING



REFINING



PRETREATMENT



COATING



UV RESISTANT



ECO FRIENDLY



WEATHER RESISTANT



MOLD RESISTANT



FR MATERIAL



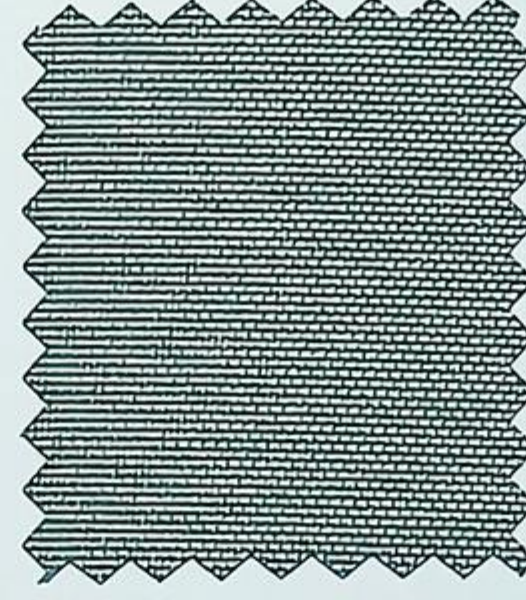
SLDP-602372 Chestnut



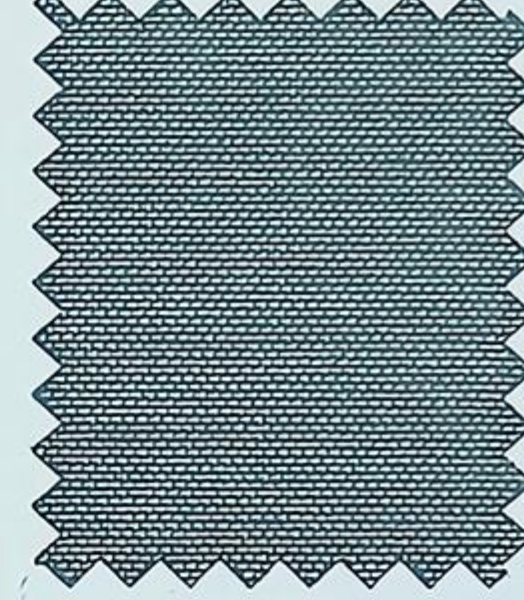
SLDP-602475 Coffee Brown



SLDP-602474 C-Walnut



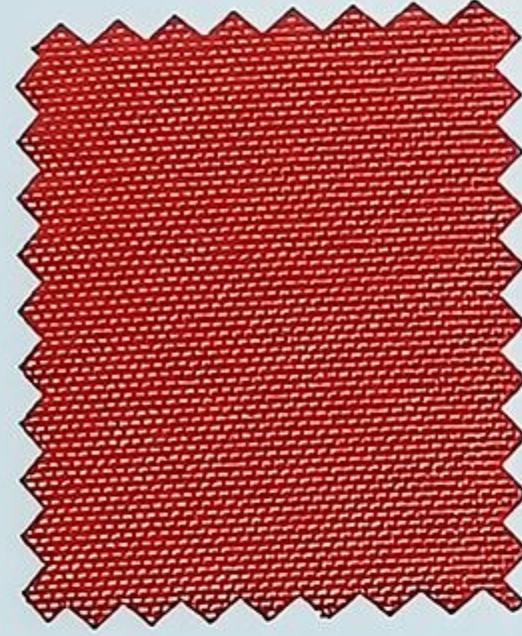
SLDP-602305 Kahaki



SLDP-602458 C-Dove



SLDP-602455 C-Taupe



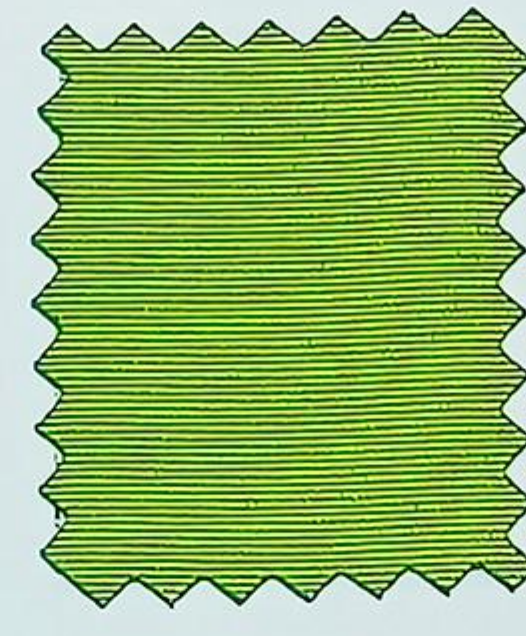
SLDP-602352 Orange



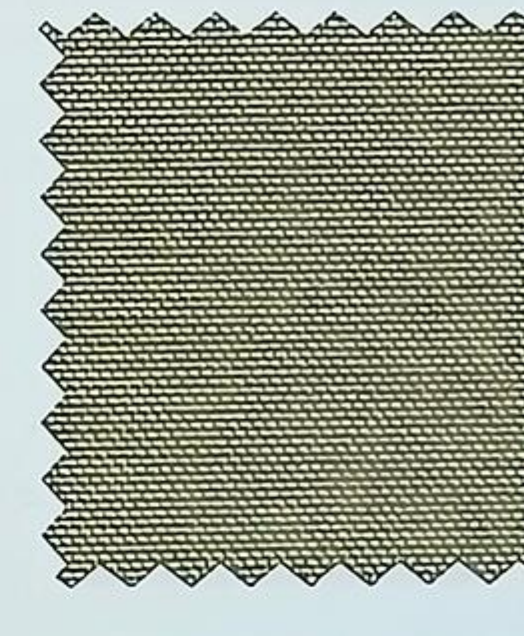
SLDP-602306 Red



SLDP-602307 Burgundy



SLDP-362396 Light Green



SLDP-602353 Sand



SLDP-602457 Y-Kahaki



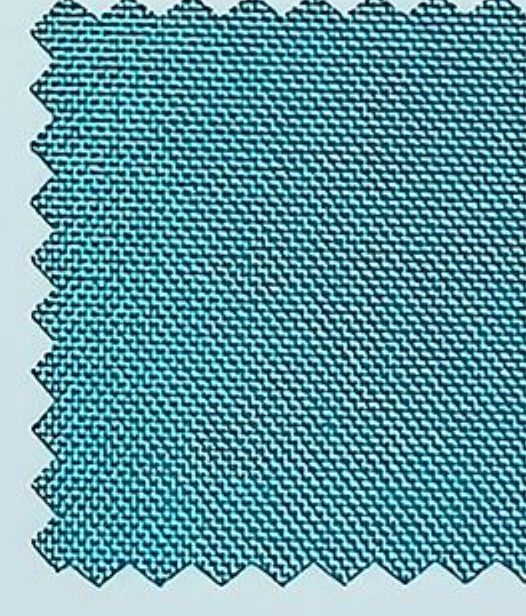
SLDP-602308 Pacific Blue



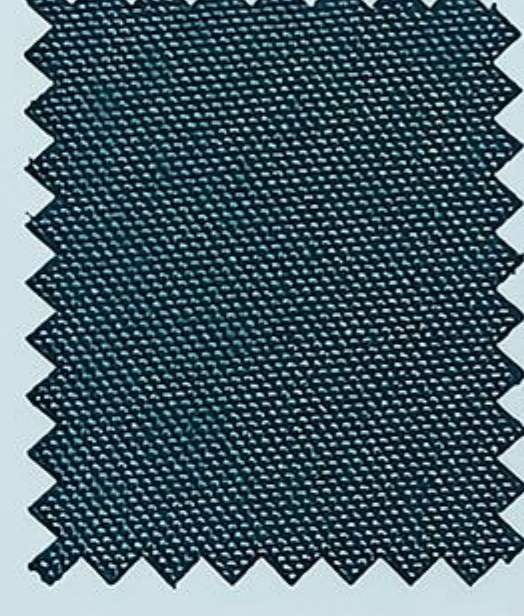
SLDP-502384 Dark Blue



SLDP-602310 Navy



SLDP-362381 Tiff Blue



SLDP-602309 Hunter Green



SLDP-602398 Moss Green

New Design



SLDP-662308 Navy Blue



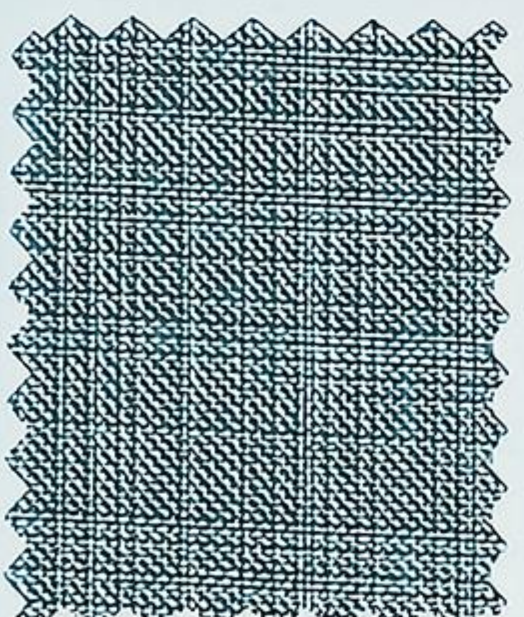
SLDP-662306 Red Orange



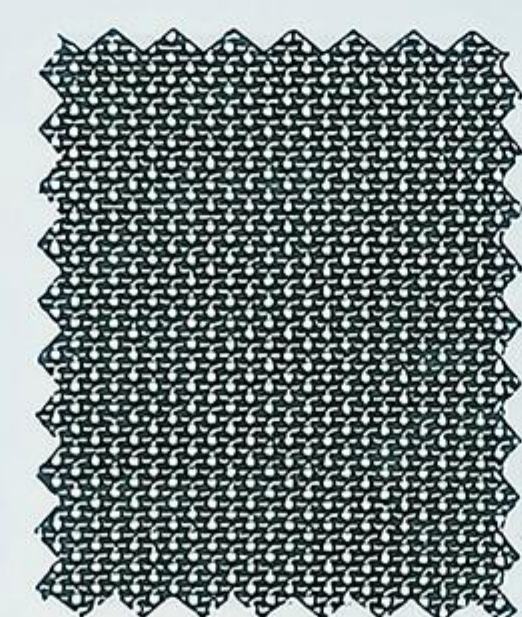
SLDP-662303 Black Orange



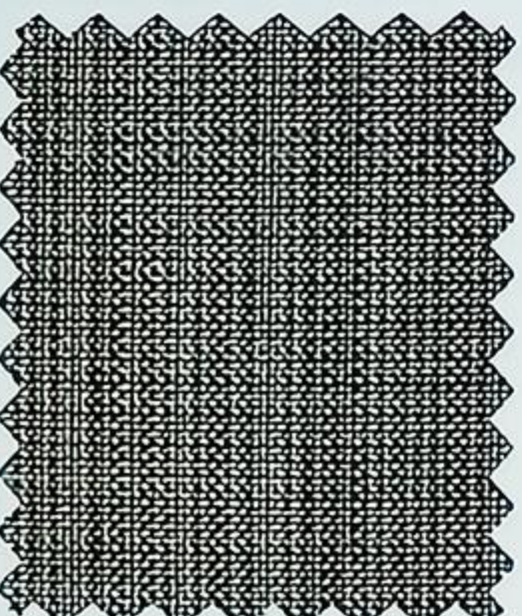
SLDP-672302 Snowfield



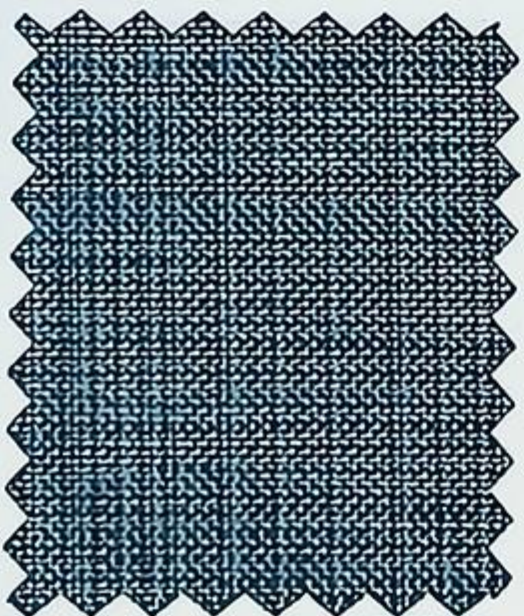
SLDP-672304 Desert



SLDP-662304 White Sand



SLDP-672305 Field



SLDP-672321 Rainforest



SLDP-672307 Deep Sea



Application: **【SLDP-6023X】**

Umbrellas, Sunshades, Canopies, Awnings, Boat covers, BIMINI-Top, Car covers
Furnitures, Furniture covers, Tarpaulins, etc.

This fabric is woven using solution dyeing process. It is a process of adding color and functional masterbatch into Polyester solution for spinning. Different materials such as polymer metal coloring materials, UV absorbers, light-stabilizers, flame retardant materials, antibacterial factors, etc. can be added to cope with various climates and environments. Enable the raw material carrier of yarn to have the original functions required, achieving weather resistance, durability, and stable performance effects. It is the best solution for outdoor marine and performance fabrics. We can provide customized fabrics with different specifications and functional applications.