

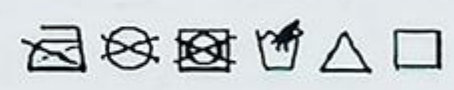


JK COVERS
ELEVATE YOUR RIDE: CUSTOM EXCELLENCE SINCE 2009

Johnson Z (GM)
No 88, Lane 225, Kaiyuan Rd, Hongtang,
Jiangbei, Ningbo, 315033, China
E: info@jkcorp.cn
WhatsApp: +1 657 7895 110

Performance fabrics
For outdoor & marine
Solution dyed polyester fabric

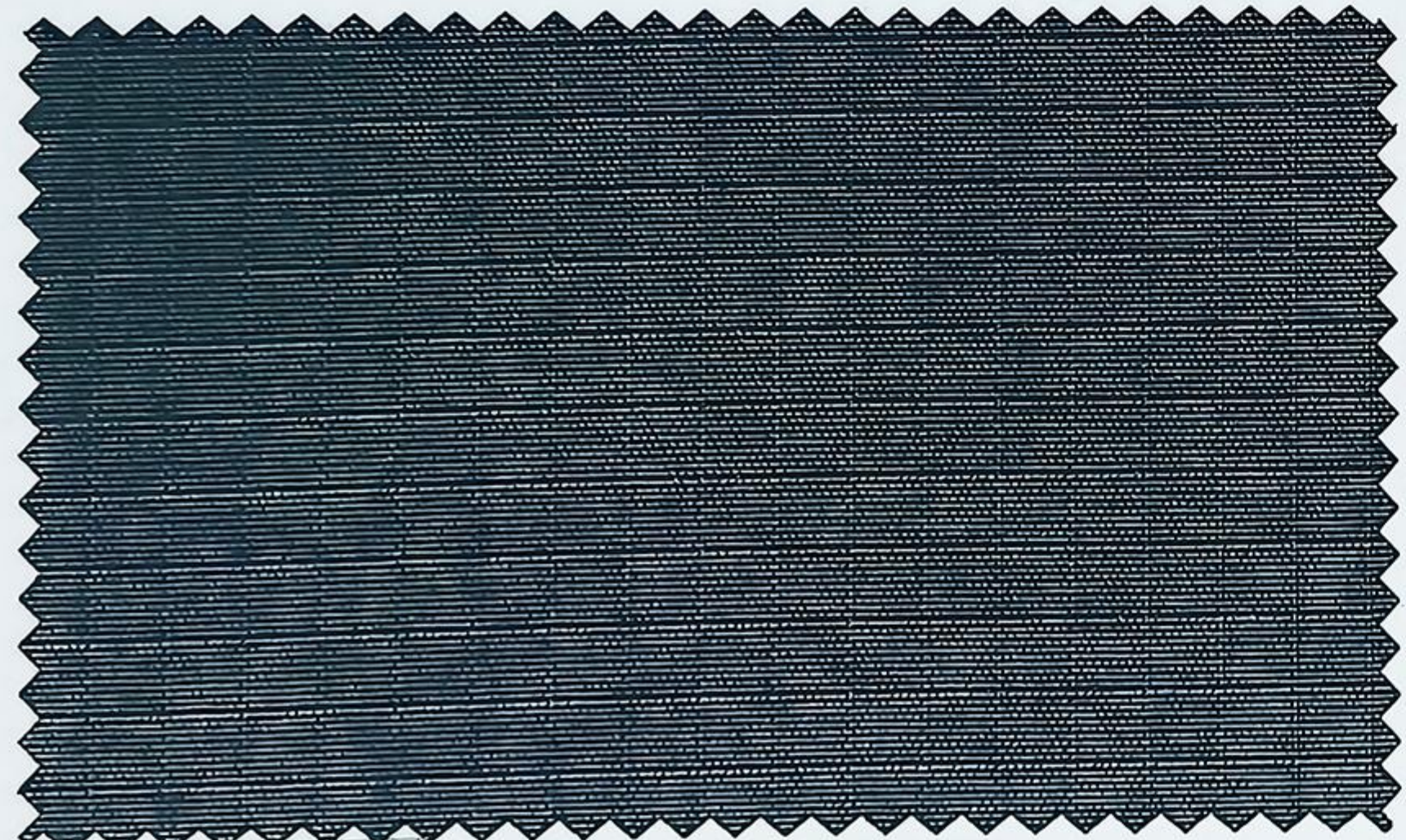
SOLUTION DYED POLYESTER FABRIC - SLDP-6028X

Item Evento Deportivo	Norm Norma	Test value Valor de prueba	Unit Unidad
Fabric name Nombre de Fábrica		100% Solution dyed polyester fabric Tejido de poliéster 100% teñido en masa	
Description Descripción		Surface waterproof / PU-coating Superficie impermeable / revestimiento de PU	
Texture Textura		Plain/Woven Liso/tejido	
Material composition Materiales	(EU) No 1007/2011	95% Polyester 5% PU	600D*600D 92T
Width Ancho	EN 1773	54-126 137-320	inch cm
Weight Peso	EN 12127	8 280	oz/yd ² g/m ²
Thickness Grosor	ISO 5084	16 0.4	mil mm
Hydrostatic Pressure Presión hidrostática	EN 20811	>8000 >800	pa mm
Water repellency Impermeabilidad	AATCC 22 EN ISO 4920	>80	Grade
Mold resistance Resistencia al moho	AATCC 30-2017	Grade 1	7 Days
Weather resistance Resistencia a la intemperie	ISO 105-B04	7-8	Grade
Colour fastness to light Solidez del color a la luz	AATCC16-3 ISO 105-B02	800-1000Hours: 4	Hour/grade Grade
Colour fastness to rubbing Solidez del color al roce	ISO 105-X12	4-5	Grade
Colour fastness to migration Solidez del color a la migración	ISO 105-X10	4-5	Grade
Chlorine resistance Resistencia al cloro	ISO 105-E03	4-5	Grade
UV resistance Resistencia a los rayos UV	EN 13758-1	UPF 70+	
Tearing Strength Resistencia al desgarramiento	ASTM D2261-13	Warp (deformación) >32.9 Weft (trama) >23.8	Lbf Lbf
Tensile Strength Resistencia a la tensión	ASTM D5034-2019	Warp (deformación) >540 Weft (trama) >340	Lbf Lbf
Abrasion Resistance Resistencia a la abrasión	ASTM D4966-22	100000	Rubs
Cleaning recommendation			
Recomendación para la limpieza		Dirt can be rinsed off using a jet of water (no high pressure). If needed, sponge down or soft brush with a small amount of mild detergent using max. 30 ° C warm water to clean. Strong friction should be avoided. Then repeatedly rinse the fabric with clean water and allow to dry. La suciedad se puede enjuagar con un chorro de agua (sin alta presión). Si es necesario, use una esponja o un cepillo suave con una pequeña cantidad de detergente suave usando máx. Agua tibia a 30 ° C para limpiar. Deben evitarse fricciones fuertes. Luego enjuague repetidamente la tela con agua limpia y déjela secar.	
Packing method Método de embalaje		Rolled + Wrapped in Plastic Film Enrollado + Envuelto en Plástico Film	
Rolls lengths Longitudes de rollos		80m (Or according to customer requirements) 80metros (O según la solicitud de longitud del cliente.)	

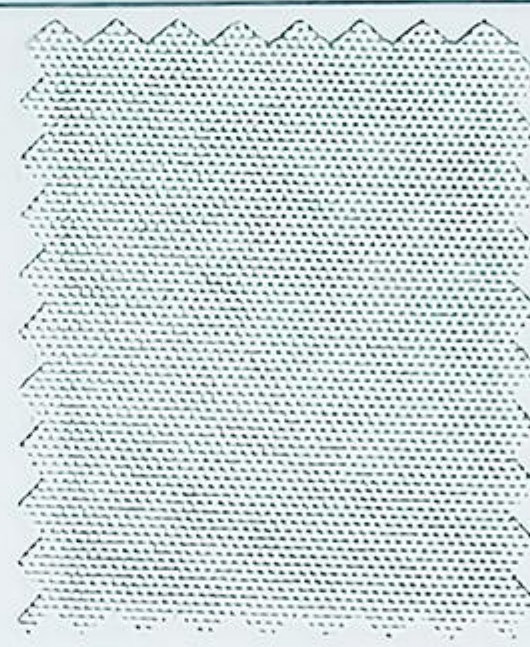
Performance fabric SLDP-6028X



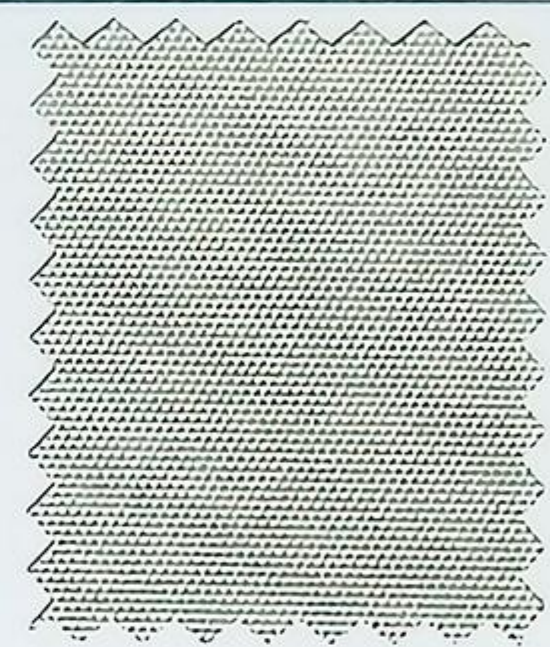
SLDP-603501 Stretch Black



SLDP-693033 Dark Grey



SLDP-602811 White



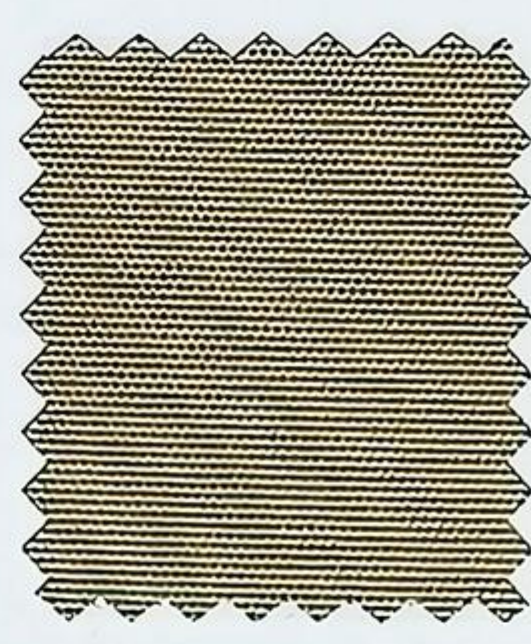
SLDP-602813 B-Light Belge



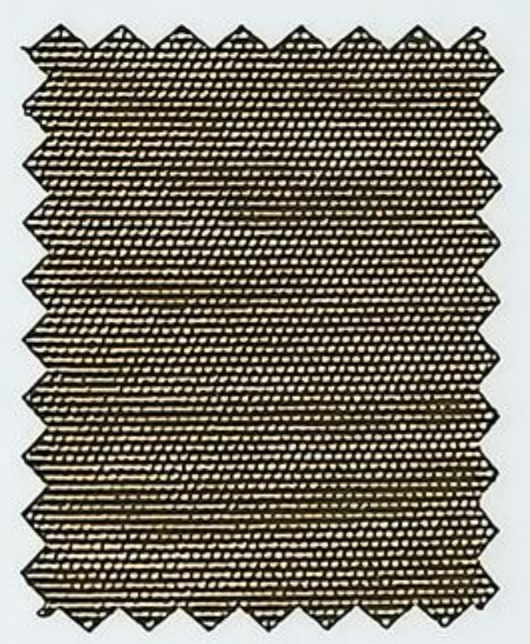
SLDP-602812 B-Belge



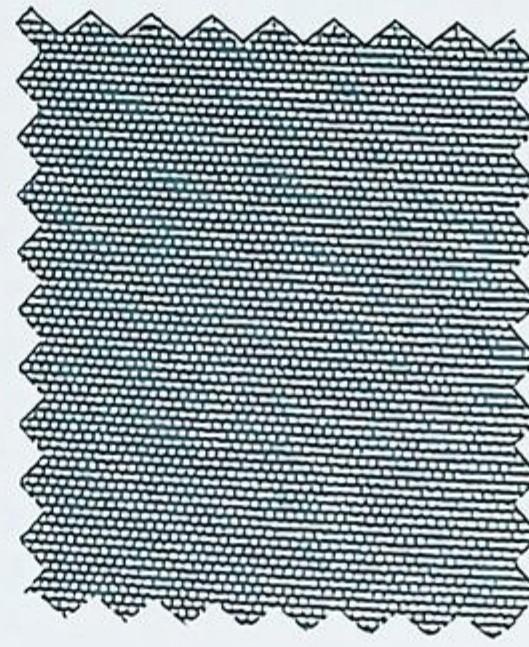
SLDP-602853 Sand



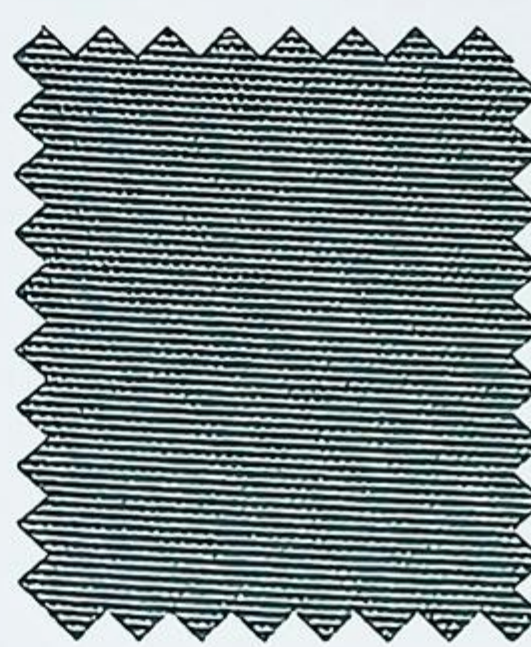
SLDP-602805 B-Khaki



SLDP-602854 B-Sand



SLDP-602804 Light Grey



SLDP-602803 M-Grey



SLDP-602802 Charcoal



UV RESISTANT



ECO FRIENDLY



WEATHER RESISTANT



MOLD RESISTANT



FR MATERIAL



SLDP-602859 HM-Orange



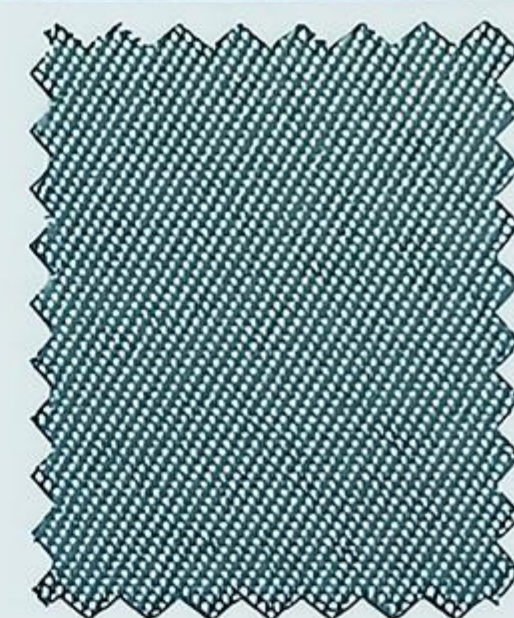
SLDP-602806 Red



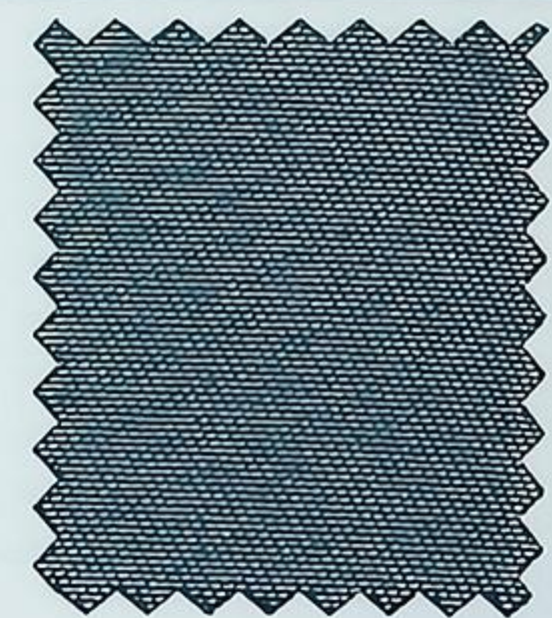
SLDP-602807 Burgundy



SLDP-603112 Twill-Cream



SLDP-603103 Twill-M Grey



SLDP-603123 Twill-Steel Grey



SLDP-602882 Peacock Blue



SLDP-602892 Prasinous



SLDP-602809 Dark Green



SLDP-603108 Twill-Pacific Blue



SLDP-603110 Twill-Dark Blue



SLDP-603102 Twill-Charcoal



SLDP-602808 Pacific Blue



SLDP-602885 Y-Navy



SLDP-602801 Black



SLDP-603153 Twill-Sand



SLDP-603107 Twill-Burgundy



SLDP-603109 Twill-Dark Green



SPINNING



SIZING



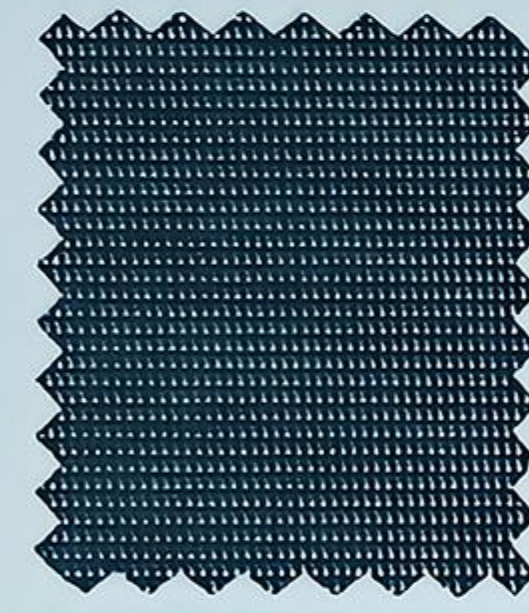
REFINING



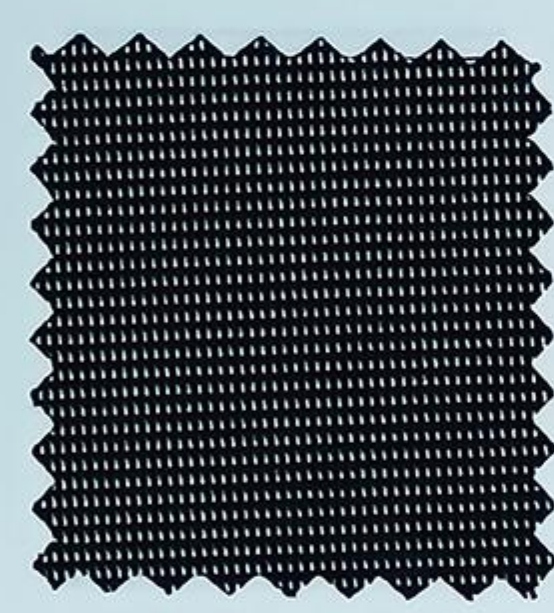
PRETREATMENT



COATING



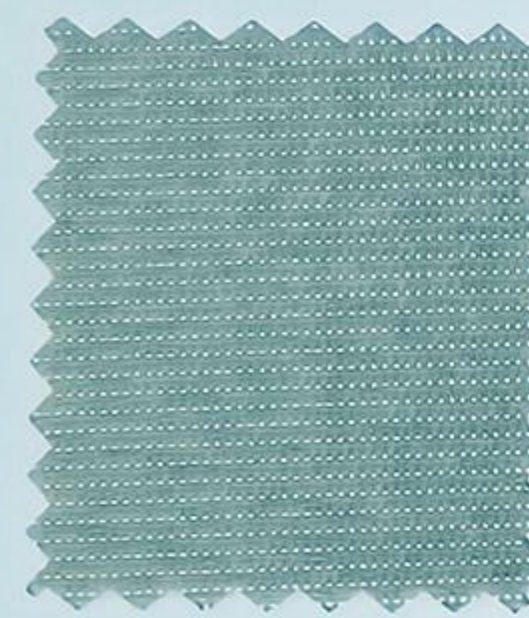
SLDP-362923 Dark Grey
Light Grey



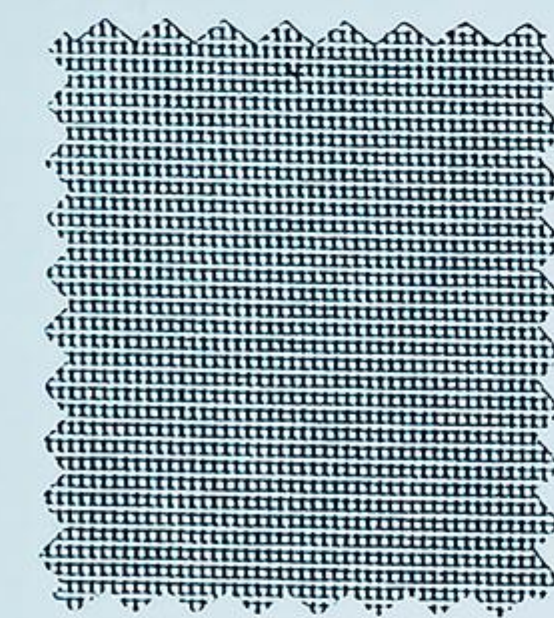
SLDP-362991 Black/Sand



SLDP-362981 Black/Blue



SLDP-362982 Sand/White



SLDP-362945 Light Green
Light Grey



SLDP-693054 Sand



SLDP-693003 M-Grey



SLDP-693002 Charcoal



SLDP-693023 Steel Grey



Application: **【SLDP-6028X】**

Umbrellas, Sunshades, Canopies, Awnings, Boat covers, BIMINI-Top, Car covers
Furnitures, Furniture covers, Tarpaulins, etc.

This fabric is woven using solution dyeing process. It is a process of adding color and functional masterbatch into Polyester solution for spinning. Different materials such as polymer metal coloring materials, UV absorbers, light-stabilizers, flame retardant materials, antibacterial factors, etc. can be added to cope with various climates and environments. Enable the raw material carrier of yarn to have the original functions required, achieving weather resistance, durability, and stable performance effects. It is the best solution for outdoor marine and performance fabrics. We can provide customized fabrics with different specifications and functional applications.