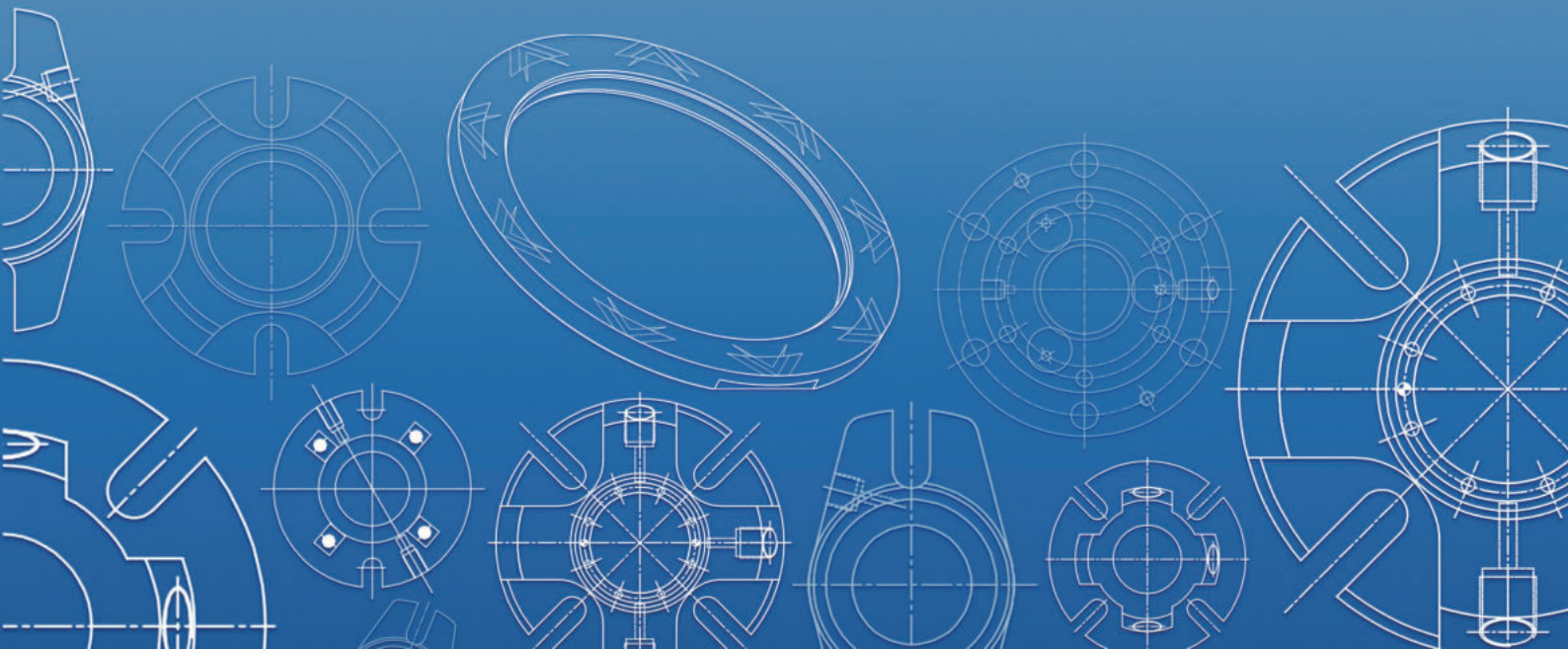




广州市乐浦机械有限公司
Guangzhou Lepu Machinery Co., Ltd.





公司简介 COMPANY PROFIL

广州乐浦机械有限公司成立于 1998 年，工厂位于广州市黄埔区，毗邻多家世界 500 强企业。乐浦机械专注于集装式机械密封、干气密封和机械密封的生产，现已成为中国密封领域的著名品牌。

乐浦机械拥有标准的现代化自动化厂房，几十台世界先进水平的数控加工中心和各类先进加工设备，以及专业的干气密封测试系统和集装式机械密封测试平台，我们的工程师均具备非常丰富的干气密封和机械密封的设计、生产和维修经验。25 年来，已经为众多国内外客户提供优质的密封产品和服务，我们的客户涵盖石油、化工、食品、能源、机械等多个领域，绝大多数都是世界 500 强企业。

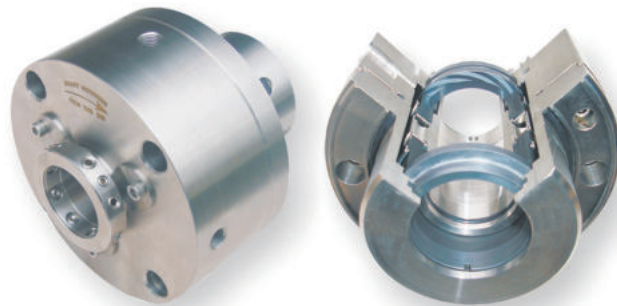
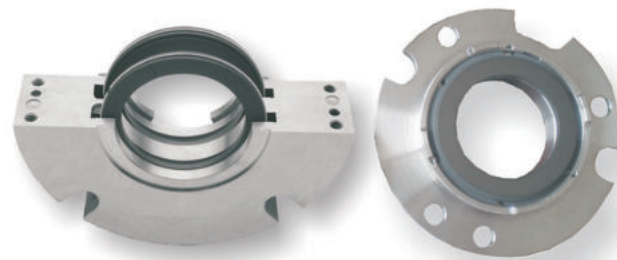
欢迎国内外客户咨询干气密封和机械密封业务。

Guangzhou Lepu Machinery Co., Ltd. was established in 1998. The factory is located in Huangpu District, Guangzhou City, adjacent to many Fortune 500 companies. We specialize in the production of cartridge mechanical seals, dry gas seals and mechanical seals, and have become a famous brand in the field of sealing in China.

Lepu Machinery has a standard modern automated workshop, dozens of world-leading CNC machining centers and various advanced processing equipment, as well as a professional dry gas seal test system and a cartridge mechanical seal test platform. Our engineers are equipped with very Rich experience in the design, production, and maintenance of dry gas seals and mechanical seals. Over the past 25 years, we have provided high-quality sealing products and services to many domestic and foreign customers. Our customers cover petroleum, chemical, food, energy, machinery, etc. Many of them are Fortune 500 companies.

Welcome customers at home and abroad to inquire about dry gas seal and mechanical seal business.

干气密封
DRY GAS SEALS
目 录
CONTENTS



| | |
|---|----|
| 1.S1G21 DGS FOR PUMP..... | 01 |
| 2.S1GM21 Tandem DGS FOR PUMP..... | 01 |
| 3.S1GD21 Double DGS FOR PUMP..... | 02 |
| 4.S1G22 Double DGS FOR PUMP | 02 |
| 5.S1GV21 DGS FOR HIGH SPEED PUMP | 03 |
| 6.S3GD DGS FOR REACTOR | 03 |
| 7.S2GS DGS FOR COMPRESSOR | 04 |
| 8.S2GD Double DGS FOR COMPRESSOR..... | 04 |
| 9.S2GT TANDEM DGS FOR COMPRESSOR..... | 05 |
| 10.S2GTA DGS With Intermediate Labyrinth Series | 05 |
| 11.S3MD Double Seal for Reactors..... | 06 |
| 12.S2C1 CARBON RING SEAL | 06 |
| 13.CSH-JXT DGS SUPPRORT SYSTEM FOR COMPRESSOR | 07 |
| 14.CSH-BXT DGS SUPPORT SYSTEM FOR PUMP..... | 07 |
| 15.MECHANICAL SEAL SUPPORT SYSTEM..... | 08 |

集装式机械密封
CARTRIDGE MECHANICAL SEALS

目 录
CONTENTS



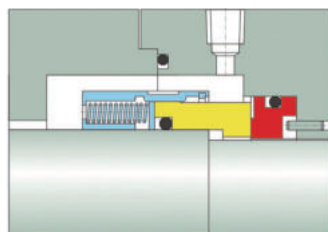
| | |
|---|----|
| 1.LP SB1 Mechanical Seal for Paper Pulp Pumps | 09 |
| 2.LP SB2 Mechanical Seal for Paper Pulp Pumps | 10 |
| 3.LP SAF Mechanical Seal Paper Pulp Pumps | 11 |
| 4.LP JCS1 Mechanical Seal for Paper Pulp Pumps | 12 |
| 5.LP JCS2 Mechanical Seal for Paper Pulp Pumps | 13 |
| 6.LP M481 Mixer and Agitator Seals | 14 |
| 7.LP DMSF Double Cartridge Mechanical Seals | 15 |
| 8.LP CSSN(Single) & CDPN(Double) Cartridge Seals | 16 |
| 9.LP FGD-325 Cartridge Seal for Flue Gas Desulphurization | 17 |
| 10.LP APItex-S | 18 |
| 11.LP TEXSN | 19 |
| 12.LP Cartex Single Seals(SN) | 20 |
| 13.LP Cartex Dual Seals(DN) | 21 |
| 14.LP Cartex ANSI Single Seals | 22 |
| 15.LP Cartex ANSI Dual Seals | 23 |
| 16.LP MA290/MA390 | 24 |
| 17.LP Unitex | 25 |
| 18.LP Mtex Dual seals | 26 |
| 19.LP 318 | 27 |
| 20.LP 320 | 28 |
| 21.LP 4610 | 29 |
| 22.LP 4620 | 30 |
| 23.LP 5610 | 31 |
| 24.LP 5620 | 32 |

S1G21 泵用干气密封 S1G21 DGS FOR PUMP

结构特点 Features

非接触式平衡型气体润滑单密封，与机械密封组合成串联式干气密封，或者两套密封背靠背组合成双端面干气密封使用；补偿环组件可采用焊接金属波纹管结构。

Non-contact balanced gas-lubricated single seal, combined with a mechanical seal to form a tandem dry gas seal, or two sets of seals combined back to back to form a double-end dry gas seal. The compensating ring assembly can adopt welded metal bellows structure.



适用参数 Specifications

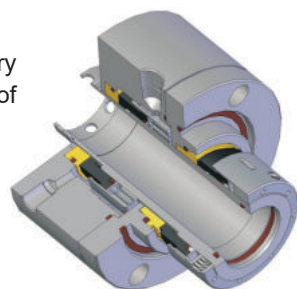
- | | |
|--------------------|--|
| • 介质: 各种化工介质 | • Medium: all kinds of chemical medium |
| • 压力: 0~3.5MPa | • Pressure: 0~3.5MPa |
| • 温度: -60~+280℃ | • Temperature: -60~+280℃ |
| • 转速: ≤ 3600 r/min | • Rotating Speed: ≤ 3600 r/min |
| • 轴径: φ20~φ180 | • Shaft Size: φ20~φ180 |

S1GM21 泵用串联式干气密封 S1GM21 Tandem DGS FOR PUMP

结构特点 Features

双密封，2CW-CS 结构，介质侧的机械密封与大气侧的干气密封串联使用，机械密封承受大部分压差；工艺介质对大气零泄漏；集装箱式结构，方便现场装拆。

Double seal design, 2CW-CS structure, the mechanical seal on the medium side and the dry gas seal on the atmosphere side are used in series, and the mechanical seal bears most of the pressure difference. The process medium has zero leakage to the atmosphere. The assembly structure is convenient for on-site assembly and disassembly.



适用参数 Specifications

- | | |
|--------------------|--|
| • 介质: 各种化工介质 | • Medium: all kinds of chemical medium |
| • 压力: 0~5.0MPa | • Pressure: 0~5.0MPa |
| • 温度: -60~+280℃ | • Temperature: -60~+280℃ |
| • 转速: ≤ 3600 r/min | • Rotating Speed: ≤ 3600 r/min |
| • 轴径: φ20~φ180 | • Shaft Size: φ20~φ180 |

泵用干气密封

反应釜用干气密封

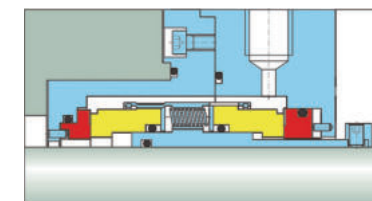
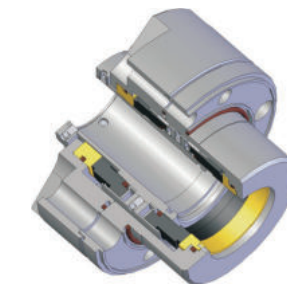


S1GD21 泵用双端面干气密封 S1GD21 Double DGS FOR PUMP

结构特点 Features

双密封，3NC-BB 背靠背结构（可用 2 套 S1G21 干气密封组合使用），工艺介质零泄漏，但有微量阻塞气体（氮气）进入工艺介质中。集装箱式结构，方便现场装拆。

Double seal, 3NC-BB back-to-back structure (two sets of S1G21 dry gas seals can be used in combination), zero leakage of process medium, but a small amount of blocking gas (nitrogen) enters the process medium. Cartridge design, easy for on-site assembly and disassembly.



适用参数 Specifications

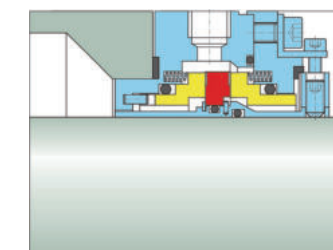
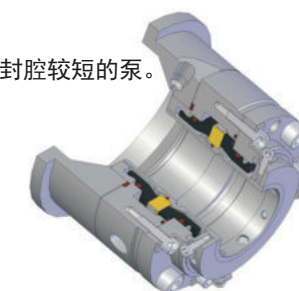
- | | |
|--------------------|--|
| • 介质: 各种化工介质 | • Medium: all kinds of chemical medium |
| • 压力: 0~3.5MPa | • Pressure: 0~3.5MPa |
| • 温度: -60~+280℃ | • Temperature: -60~+280℃ |
| • 转速: ≤ 3600 r/min | • Rotating Speed: ≤ 3600 r/min |
| • 轴径: φ20~φ180 | • Shaft Size: φ20~φ180 |

S1G22 泵用双端面干气密封 S1G22 Double DGS FOR PUMP

结构特点 Features

双密封，3NC-FF 面对面结构，共用动环，较 S1GD21 双端面干气密封轴向尺寸更短，更适用于密封腔较短的泵。集装箱式结构，方便现场装拆。

Double seal, 3NC-FF Face-to-Face structure, zero leakage of process medium. Fit for shorter cavity pump. Cartridge design, easy for on-site assembly and disassembly.



适用参数 Specifications

- | | |
|--------------------|--|
| • 介质: 各种化工介质 | • Medium: all kinds of chemical medium |
| • 压力: 0~3.5MPa | • Pressure: 0~3.5MPa |
| • 温度: -60~+280℃ | • Temperature: -60~+280℃ |
| • 转速: ≤ 3600 r/min | • Rotating Speed: ≤ 3600 r/min |
| • 轴径: φ20~φ180 | • Shaft Size: φ20~φ180 |



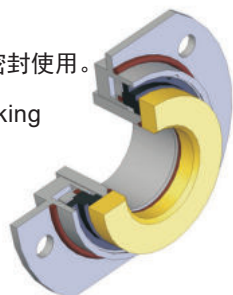
压缩机用干气密封

S1GV21 高速泵用干气密封 S1GV21 DGS FOR HIGH SPEED PUMP

结构特点 Features

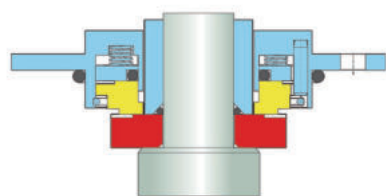
非接触弹簧静式气体润滑单密封，更能适应高转速工况；可组合成双端面干气密封或串联式干气密封使用。

The non-contact spring static gas-lubricated single seal is more suitable for high-speed working conditions; it can be combined into a double-end dry gas seal or a tandem dry gas seal.



适用参数 Specifications

- | | |
|------------------------------|--|
| • 介质：各种化工介质 | • Medium: all kinds of chemical medium |
| • 压力：0~3.0MPa | • Pressure: 0~3.0MPa |
| • 温度：-60~+280℃ | • Temperature: -60~+280℃ |
| • 转速：≤ 25000 r/min | • Rotating Speed: ≤ 25000 r/min |
| • 轴径：φ 25.4, φ 31.75, φ 38.1 | • Shaft Size: φ 25.4, φ 31.75, φ 38.1 |



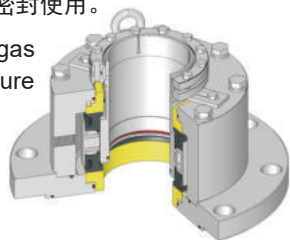
S3GD 反应釜用干气密封 S3GD DGS FOR REACTOR

结构特点 Features

非接触弹簧静式气体润滑单密封，更能适应高转速工况；可组合成双端面干气密封或串联式干气密封使用。

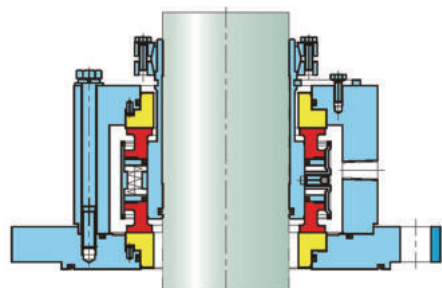
Double seal design, 2CW-CS structure, the mechanical seal on the medium side and the dry gas seal on the atmosphere side are used in series, and the mechanical seal bears most of the pressure difference. The process medium has zero leakage to the atmosphere.

Convenient for on-site assembly and disassembly.



适用参数 Specifications

- | | |
|-------------------|--|
| • 介质：各种化工介质 | • Medium: all kinds of chemical medium |
| • 压力：0~3.5MPa | • Pressure: 0~3.5MPa |
| • 温度：-60~+280℃ | • Temperature: -60~+280℃ |
| • 转速：≤ 3600 r/min | • Rotating Speed: ≤ 3600 r/min |
| • 轴径：φ 20~φ 180 | • Shaft Size: φ 20~φ 180 |

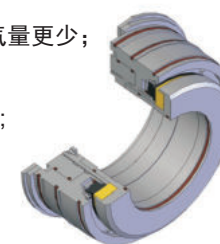


S2GS 压缩机用单端面干气密封 S2GS DGS FOR COMPRESSOR

结构特点 Features

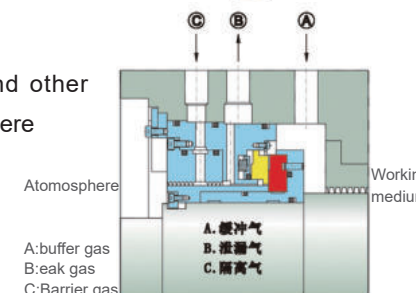
优化的流体动压槽设计，最大限度地保证密封可靠性和长周期使用寿命；隔离密封可选用碳环密封，耗气量更少；集装箱式结构，方便现场装拆。

Optimized fluid dynamic pressure groove design ensures maximum sealing reliability and long cycle life; Carbon ring seal can be used for the isolation seal, which has less air consumption; The cartridge structure is convenient for on-site.



适用参数 Specifications

- | | |
|-------------------------------|--|
| • 介质：空气、氮气、二氧化碳等对大气环境无污染的工艺气体 | • Medium: Air, nitrogen, carbon dioxide and other process gases that do not pollute the atmosphere |
| • 压力：0~15MPa | • Pressure: 0~15MPa |
| • 温度：-60~+280℃ | • Temperature: -60~+280℃ |
| • 转速：≤ 160 m/s | • Rotating Speed: ≤ 160 m/s |
| • 轴径：φ 45~φ 350 | • Shaft Size: φ 45~φ 350 |

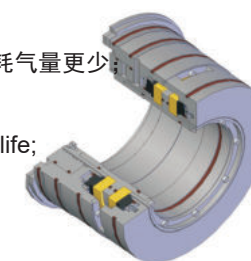


S2GD 压缩机用双端面干气密封 S2GD Double DGS FOR COMPRESSOR

结构特点 Features

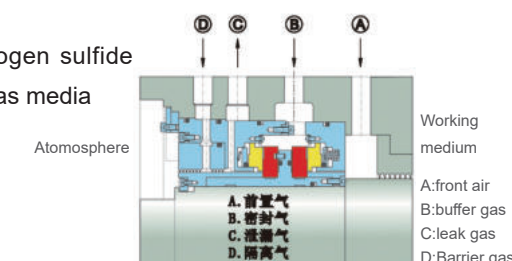
优化的流体动压槽设计，最大限度地保证密封可靠性和长周期使用寿命；隔离密封可选用碳环密封，耗气量更少；集装箱式结构，方便现场装拆。

Optimized fluid dynamic pressure groove design ensures maximum sealing reliability and long cycle life; Carbon ring seal can be used for the isolation seal, which has less air consumption; The cartridge structure is convenient for on-site.



适用参数 Specifications

- | | |
|----------------------------|---|
| • 介质：高炉煤气、硫化氢等易燃、易爆或有毒气体介质 | • Medium: Blast furnace gas, hydrogen sulfide other flammable, explosive or toxic gas media |
| • 压力：0~3.0MPa | • Pressure: 0~3.0MPa |
| • 温度：-60~+280℃ | • Temperature: -60~+280℃ |
| • 转速：≤ 160 m/s | • Rotating Speed: ≤ 160 m/s |
| • 轴径：φ 45~φ 350 | • Shaft Size: φ 45~φ 350 |

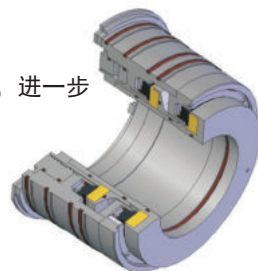


S2GT 压缩机用串联式干气密封 S2GT TANDEM DGS FOR COMPRESSOR

结构特点 Features

优化的流体动压槽设计，最大限度地保证密封可靠性和长周期使用寿命；二级密封作为备用安全密封，进一步提高了密封可靠性；集装式结构，方便现场装拆。

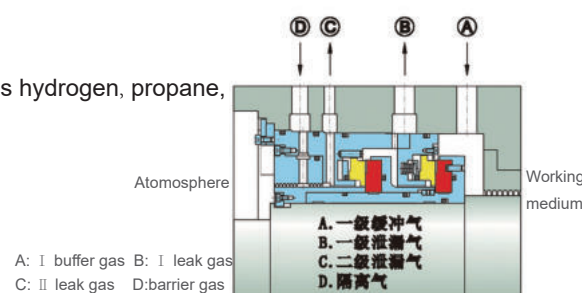
Dynamic pressure groove design, maximum sealing reliability and long cycle life;
The secondary seal used as a backup safety seal, improves the reliability of the seal;
The cartridge design is convenient for on-site assembly and disassembly.



适用参数 Specifications

- 介质：氢气、丙烷、合成气等工艺气体
- 压力：0~15MPa
- 温度：-60~+280℃
- 转速：≤ 160 m/s
- 轴径：φ45~φ350

- Medium: process gases such as hydrogen, propane, synthesis gas
- Pressure: 0~15MPa
- Temperature: -60~+280℃
- Rotating Speed: ≤ 160 m/s
- Shaft Size: φ45~φ350

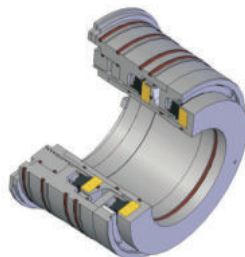


S2GTA 压缩机用带中间迷宫串联式干气密封 S2GTA DGS with Intermediate Labyrinth Series

结构特点 Features

优化的流体动压槽设计，最大限度地保证密封可靠性和长周期使用寿命；二级密封作为备用安全密封，进一步提高了密封可靠性；集装式结构，方便现场装拆。

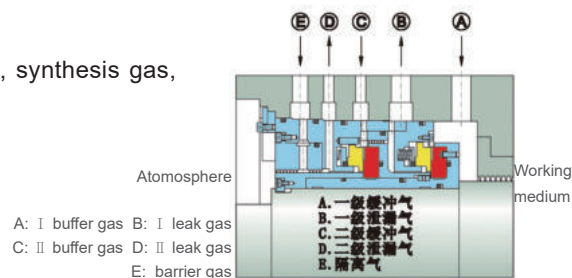
Dynamic pressure groove design, maximum sealing reliability and long cycle life;
The secondary seal used as a backup safety seal, improves the reliability of the seal;
The cartridge design is convenient for on-site assembly and disassembly.



适用参数 Specifications

- 介质：氢气、氨气、合成气、天然气等工艺气体
- 压力：0~15MPa
- 温度：-60~+280℃
- 转速：≤ 160 m/s
- 轴径：φ45~φ350

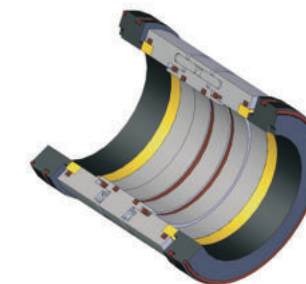
- Medium: hydrogen, ammonia, synthesis gas, natural gas, etc
- Pressure: 0~15MPa
- Temperature: -60~+280℃
- Rotating Speed: ≤ 160 m/s
- Shaft Size: φ45~φ350



S3MD 反应釜用双端面机械密封 S3MD Double Seal for Reactors

结构特点 Features

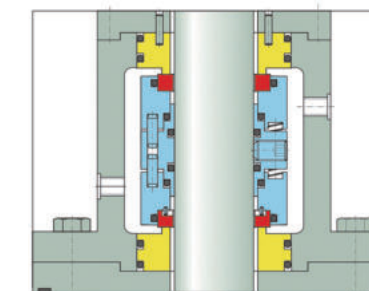
平衡型背对背双密封，用千大轴径搅拌设备。
Balanced back-to-back double seals for large shaft diameter mixing equipment.



适用参数 Specifications

- 介质：各种工艺流体
- 压力：0~3.0MPa
- 温度：-20~+250℃
- 转速：≤ 3600 r/min
- 轴径：φ50~φ250

- Medium: all kinds of chemical medium
- Pressure: 0~3.0MPa
- Temperature: -20~+250℃
- Rotating Speed: ≤ 3600 r/min
- Shaft Size: φ50~φ250

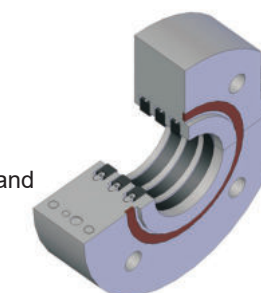


S2C1 压缩机 / 风机用碳环密封 S2C1 CARBON RING SEAL

结构特点 Features

分瓣或整体碳环设计，剖分式密封壳体，结构简单，现场安装方便快捷，通用性强；特别适合低压、高速工况条件。

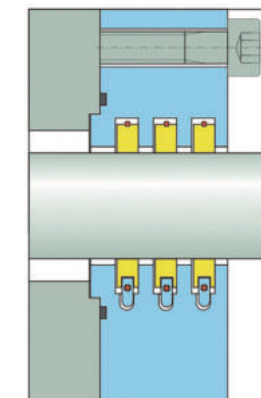
Split or integral carbon ring design, the split sealed shell has a simple structure, convenient and fast on-site installation, and strong versatility;
Especially suitable for low pressure and high speed working conditions.



适用参数 Specifications

- 介质：空气、氮气、高炉煤气等工艺气体
- 压力：0~1.0MPa
- 温度：-20~+200℃
- 转速：≤ 12000 r/min
- 轴径：φ50~φ350

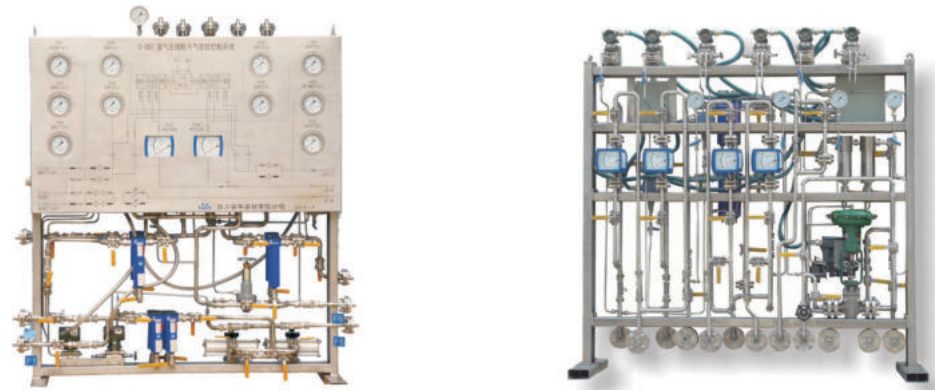
- Medium: Process gases such as air, nitrogen, blast furnace gas
- Pressure: 0~1.0MPa
- Temperature: -20~+200℃
- Rotating Speed: ≤ 12000 r/min
- Shaft Size: φ50~φ350





泵用机械密封系统 MECHANICAL SEAL SUPPORT SYSTEM

CSH-JXT 压缩机用干气密封系统 CSH-JXT DGS SUPPORT SYSTEM FOR COMPRESSOR



应用：根据干气密封类型确定系统 P&ID，实现干气密封运行状态的实时监测。
Application: Realize real-time monitoring of the dry gas seal operation status.

CSH-BXT 泵用干气密封系统 CSH-BXT DGS SUPPORT SYSTEM FOR PUMP



应用：根据干气密封类型确定系统 P&ID，实现干气密封运行状态的实时监测。
Application: Realize real-time monitoring of the dry gas seal operation status.

LP-BXT21

LP-BXT52

LP-BXT53A

LP-BXT53B



LP-BXT21



LP-BXT52



LP-BXT53A



LP-BXT53B

Remarks: imported seal, specially designed cartridge seal for plotting and customization subject to your sample and drawing.
ADD.: No. 5, Yunkai Road, Huangpu District, Guangzhou, China.
TEL.: +86-020-36158139, +86-020-36158280

LP SB1 Mechanical Seal for Paper Pulp Pumps

造纸设备用机械密封, 适用于化工离心泵、真空泵、压缩机
For Chemical Centrifugal Pumps, Vacuum Pumps, Compressors

应用领域

广泛应用于化工、制浆、蒸发、过滤、污水处理等领域。可同纸浆泵、冷凝泵、过滤器、压力筛等旋转设备配套。可替代 ANDRIIZ SafeMatic 同类型产品。

主要技术参数

介质: 化工、食品、石油、制药、造纸、纸浆和污水处理
温度: - 20°C to +120°C
压力: ≤ 1.5MPa
转速: ≤ 20m/s
规格范围: 35mm - 220mm

材料:
动环: 碳化硅 / 碳化钨
静环: 石墨 / 碳化硅 / 碳化钨
辅助密封: 丁腈橡胶 / 三元乙丙橡胶 / 氟橡胶 / Aflas / 全氟醚
弹簧: SS304/SS316/HC-276
金属部件: SS304/SS316/SS316L



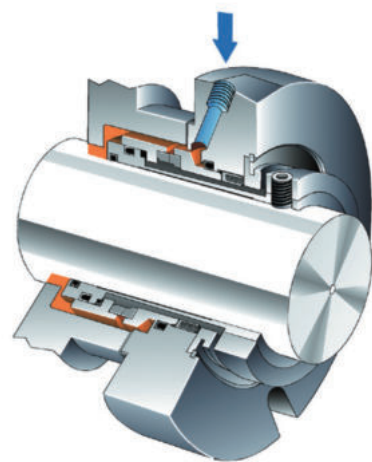
Scopes of Application

Widely used in chemical industry, pulping, evaporation, filtration, sewage treatment and other fields. It can be matched with rotating equipment such as pulp pumps, condensate pumps, filters, pressure screens, etc. This component can work as an alternative to ANDRIIZ SafeMatic seal support system.

Working Conditions

Mediums: Chemical, Food, Oil, Pharmaceutical, Paper, Pulp and Wastewater Treatment
Temperature: - 20°C to +120°C
Pressure: ≤ 1.5MPa
Speed: ≤ 20m/s
Inner Diameter: 35mm to 220mm

Materials:
Rotary Ring: SiC/TC
Stationary Ring: Carbon/SiC/TC
Elastomers: NBR/EPDM/Viton/Aflas
Springs: SS304/SS316/HC-276
Metal Parts: SS304/SS316/SS316L



LP SB2 Mechanical Seal for Paper Pulp Pumps

造纸设备用机械密封, 适用于化工离心泵、真空泵、压缩机
For Chemical Centrifugal Pumps, Vacuum Pumps, Compressors

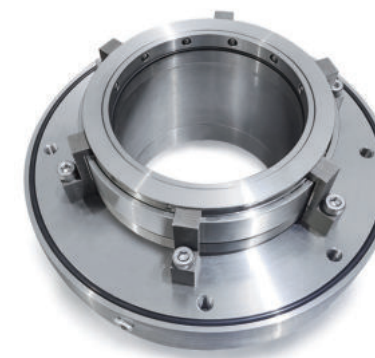
应用领域

广泛应用于化工、制浆、蒸发、过滤、污水处理等领域。可同纸浆泵、冷凝泵、过滤器、压力筛等旋转设备配套。可替代 ANDRIIZ SafeMatic 同类型产品。

主要技术参数

介质: 化工、食品、石油、制药、造纸、纸浆和污水处理
温度: - 20°C to +180°C
压力: ≤ 1.5MPa
转速: ≤ 20m/s
规格范围: 35mm - 140mm

材料:
动环: 碳化硅 / 碳化钨
静环: 石墨 / 碳化硅 / 碳化钨
辅助密封: 丁腈橡胶 / 三元乙丙橡胶 / 氟橡胶 / Aflas / 全氟醚
弹簧: SS304/SS316/HC-276
金属部件: SS304/SS316/SS316L



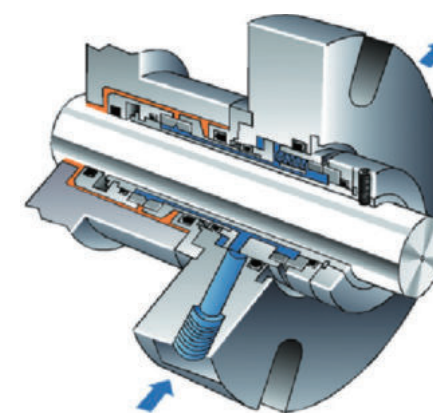
Scopes of Application

Widely used in chemical industry, pulping, evaporation, filtration, sewage treatment and other fields. It can be matched with rotating equipment such as pulp pumps, condensate pumps, filters, pressure screens, etc. This component can work as an alternative to ANDRIIZ SafeMatic seal support system.

Working Conditions

Mediums: Chemical, Food, Oil, Pharmaceutical, Paper, Pulp and Wastewater Treatment
Temperature: - 20°C to +180°C
Pressure: ≤ 1.5MPa
Speed: ≤ 20m/s
Inner Diameter: 35mm to 140mm

Materials:
Rotary Ring: SiC/TC
Stationary Ring: Carbon/SiC/TC
Elastomers: NBR/EPDM/Viton/Aflas
Springs: SS304/SS316/HC-276
Metal Parts: SS304/SS316/SS316L



LP SAF Mechanical Seal Paper Pulp Pumps

适用于造纸设备和压力筛（纸浆搅拌）
For Paper-making Equipment and Pressure Screens (for paper pulp agitation)

应用领域

广泛应用于化工、制浆、蒸发、过滤、污水处理等领域。可同压力筛和过滤机等旋转设备配套。可替代 ANDRILIZ SafeMatic 同类型产品。

主要技术参数

介质: 油类、水、黑液、纸浆、酸、碱、溶剂等介质
温度: - 40°C to +180°C
压力: ≤ 1.5MPa
转速: ≤ 20m/s
规格范围: 45mm - 200mm

材料:

动环:

· 介质侧: 碳化硅 / 碳化钨 · 封液侧: 碳化硅 / 碳化钨

静环:

· 介质侧: 碳化硅 / 碳化钨 · 封液侧: 石墨 / 碳化硅 / 碳化钨

辅助密封: 氟橡胶 / 三元乙丙橡胶 / 聚四氟乙烯 / Aflas

弹簧: SS316/HC276

金属部件: SS304/SS316/SS316L/2507/2205



Scopes of Application

Mainly used in chemical engineering, pulp production, pulp drying, pulp screening, and sewage treatment. Designed for pressure screens and other filters. This component can work as an alternative to ANDRILIZ SafeMatic seal support system.

Working Conditions

Mediums: Oil, Water, Sulphite lyes, Paper Pulp, Acid, Alkali and other solvents.

Temperature: - 40°C to +180°C

Pressure: ≤ 1.5MPa

Speed: ≤ 20m/s

Inner Diameter: 45mm to 200mm

Materials:

Rotary Ring:

· Medium Side: SiC/TC · Sealing Water Side: SiC/TC

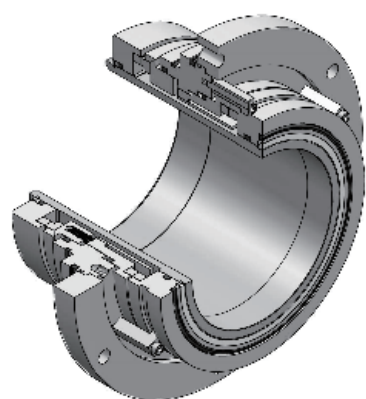
Stationary Ring:

· Medium Side: SiC/TC · Sealing Water Side: Car/SiC/TC

Elastomers: Viton/EPDM/PTFE/Aflas

Springs: SS316/HC276

Metal Parts: SS304/SS316/SS316L/2507/2205



LP JCS1 Mechanical Seal for Paper Pulp Pumps

造纸设备、氧化铝设备、设计系统和渣浆泵用机械密封
For Paper-making Equipment, Alumina Plants, Design System and Slurry Pumps

应用领域

广泛用于纸浆泵、化工泵、污水泵等泵类设备, 以及化工、发电、采矿、炼油、铝厂、食品加工、制药和造纸行业。此机械密封件可用于苏尔寿泵配套替代约翰克萨 Safematic 系列的 JCS1 型机械密封产品。

主要技术参数

介质: 油、水、纸浆、黑液、酸、碱、溶剂和其他含固体颗粒或高粘度的介质
温度: - 20°C to +180°C
压力: ≤ 2.0MPa
转速: ≤ 20m/s
规格范围: 30mm - 100mm

材料:

动环: 碳化硅 / 碳化钨

静环: 石墨 / 碳化硅 / 碳化钨

辅助密封: 氟橡胶 / 三元乙丙橡胶 / Aflas / 聚四氟乙烯 / 全氟醚橡胶

弹簧: SS304/SS316/HC-276

金属部件: SS304/SS316/SS316L



Scopes of Application

Mainly used in paper-making equipment, slurry pumps, pressure screens, for industries such as chemical engineering, power plants, mining, oil refining, alumina plants, food processing, pharmacy, and paper making. This seal works as an alternative to similar products of Sulzer, working as Safematic JCS1 replacement seals.

Working Conditions

Mediums: Oil, Water, Paper pulp, Cypsum Slurry, Acid, Alkali, Solvents and other solid particle and high viscosity mediums.

Temperature: - 20°C to +180°C

Pressure: ≤ 2.0MPa

Speed: ≤ 20m/s

Inner Diameter: 30mm to 100mm

Materials:

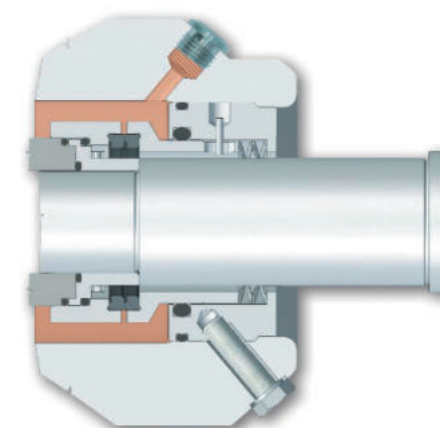
Rotary Ring: SiC/TC

Stationary Ring: Carbon/SiC/TC

Elastomers: Viton/EPDM/Aflas/PTFE/FFKM

Springs: SS304/SS316/HC-276

Metal Parts: SS304/SS316/SS316L



LP JCS2 Mechanical Seal for Paper Pulp Pumps

造纸设备、氧化铝设备、设计系统和渣浆泵用机械密封
For Paper-making Equipment, Alumina Plants, Design System and Slurry Pumps

应用领域

主要用于造纸设备、轻型渣浆泵、化工泵、污水泵、压力筛等设备，广泛用于化工、发电、采矿、炼油、铝厂、食品加工、制药和造纸等行业。此机械密封件可配套苏尔寿泵使用，替代约翰克萨 Safematic 系列 JCS2 型机械密封件产品。

主要技术参数

介质: 油、水、纸浆、黑液、酸、碱、溶剂和其他含固体颗粒或高粘度的介质

温度: -20°C to +180°C

压力: ≤ 2.0MPa

转速: ≤ 20m/s

规格范围: 30mm - 100mm

材料:

动环: 碳化硅 / 碳化钨

静环: 石墨 / 碳化硅 / 碳化钨

辅助密封: 氟橡胶 / 三元乙丙胶 / Aflas / 聚四氟乙烯 / 全氟醚橡胶

弹簧: SS304/SS316/HC-276

金属部件: SS304/SS316/SS316L



Scopes of Application

Mainly used in paper-making equipment, slurry pumps, pressure screens, for industries such as chemical engineering, power plants, mining, oil refining, alumina plants, food processing, pharmacy, and paper making. This seal works as an alternative to similar products of Sulzer, working as Safematic JCS2 replacement seals.

Working Conditions

Mediums: Oil, Water, Paper pulp, Cypsum Slurry, Acid, Alkali, Solvents and other solid particle and high viscosity mediums.

Temperature: -20°C to +180°C

Pressure: ≤ 2.0MPa

Speed: ≤ 20m/s

Inner Diameter: 30mm to 100mm

Materials:

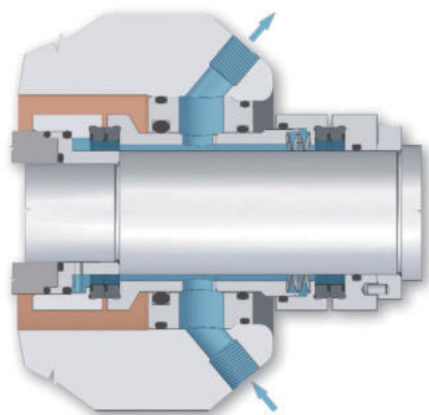
Rotary Ring: SiC/TC

Stationary Ring: Carbon/SiC/TC

Elastomers: Viton/EPDM/Aflas/PTFE/FFKM

Springs: SS304/SS316/HC-276

Metal Parts: SS304/SS316/SS316L



LP M481 Mixer and Agitator Seals

搅拌设备、反应釜用机械密封
For Agitation Equipment / Reaction Kettles

应用领域

广泛应用于化工、冶炼、制药、食品、农药、化肥、炼油等领域。可同立式反应釜、干燥机、蒸发器等配套，可替代 EagleBurgmann M481 同规格产品。

主要技术参数

介质: 水、油、弱酸、弱碱、易燃易爆和有毒性气体介质

温度: -40°C to +180°C

压力: 0.1 - 1.6MPa

转速: ≤ 2m/s

规格范围: 40mm - 220mm

材料:

动环: 碳化硅 / 石墨

静环: 碳化硅 / 碳化钨

辅助密封: 丁腈橡胶 / 氟橡胶 / 三元乙丙胶 / 聚四氟乙烯 / 全氟醚橡胶

弹簧: SS304/SS316/HC-276

金属部件: SS304/SS316/SS316L



Scopes of Application

Widely used in chemical engineering, metallurgy, pharmacy food processing, pesticides and fertilizers, and oil refining industry. This seal component works as an alternative to EagleBurgmann M481.

Working Conditions

Mediums: Water, Oil, Weak acid, Weak alkali, Flammable, Explosive and Poisonous gas.

Temperature: -20°C to +180°C

Pressure: ≤ 0.1 to 1.6MPa

Speed: ≤ 2m/s

Inner Diameter: 40mm to 220mm

Materials:

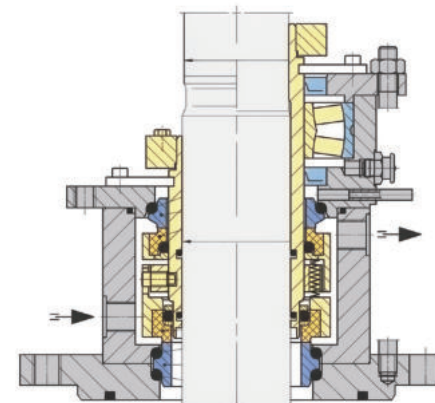
Rotary Ring: SiC/Carbon

Stationary Ring: SiC/TC

Elastomers: NBR/Viton/EPDM/PTFE/FFKM

Springs: SS304/SS316/HC-276

Metal Parts: SS304/SS316/SS316L



LP DMSF Double Cartridge Mechanical Seals

双端面集装箱式固定型导流 / 对流密封
Double Monolithic Stationary Flow / Convection

结构特点

- 提高密封环在高压高温工况中的稳定性，延长密封在此类工况中的使用寿命；
- 内侧密封面采用双平衡，有助于确保出色的密封性，可最大限度地减少密封面变形，并有助于确保流体稳定；
- 带多弹簧端面装载的液压平衡型设计，提高了可靠性与密封性能。

主要技术参数

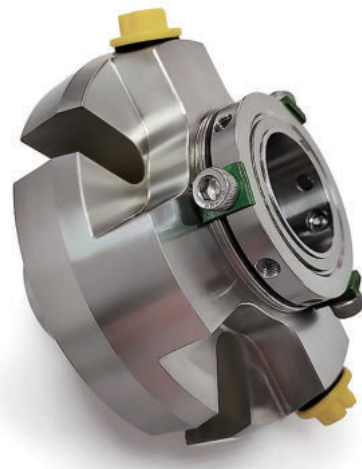
规格范围: 24mm - 85mm

静环: Carbon/Sic/TC

动环: Carbon/Sic/TC

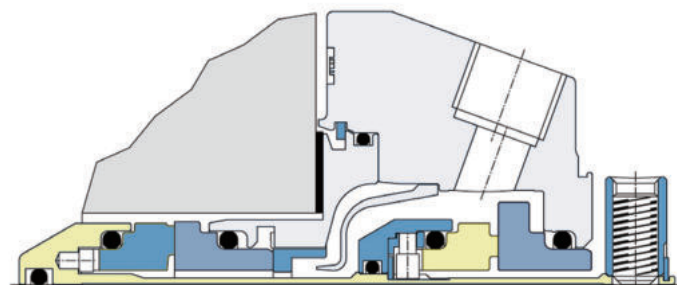
辅助密封: Viton/Kalrez/Aflas, etc.

弹簧及金属部件: Stainless Steel/Hast C



Features

- Improve the stability of the sealing ring in high pressure and high temperature conditions and extend the service life of the seal in such conditions;
- The inboard seal face is double balanced to help ensure excellent sealing, minimizing seal face deformation and helping to ensure fluid stability;
- The hydraulically balanced design with multi-spring end loading improves reliability and sealing performance.



Main parameters

Inner Diameter: 25mm to 85mm

Stationary Ring: Carbon/Sic/TC

Rotary Ring: Carbon/Sic/TC

Secondary Seal: Viton/Kalrez/Aflas, etc.

Spring and Metal Part: Stainless Steel/Hast C

LP CSSN(Single) & CDPN(Double) Cartridge Seals

单端面 / 双端面集装箱式密封

LP CSSN(Single) Cartridge Seal



主要技术参数

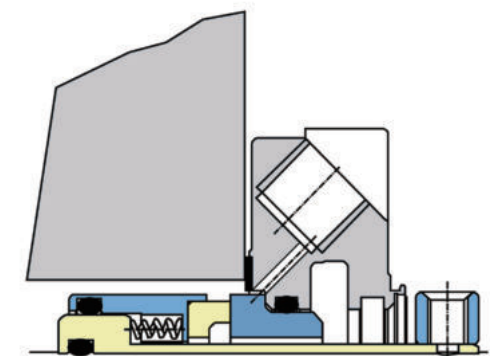
规格范围: 24mm - 85mm

静环: Ceramic/Sic/TC

动环: Carbon/Sic/TC

辅助密封: Viton/Kalrez/Aflas, etc.

弹簧及金属部件: Stainless Steel/Hast C



Main parameters

Inner Diameter: 25mm to 85mm

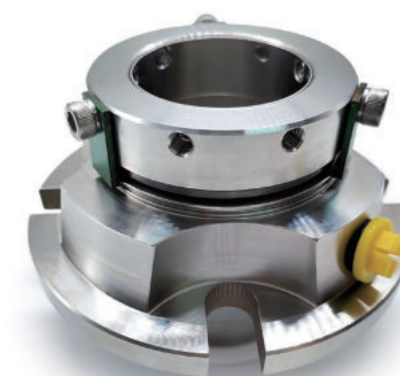
Stationary Ring: Ceramic/Sic/TC

Rotary Ring: Carbon/Sic/TC

Secondary Seal: Viton/Kalrez/Aflas, etc.

Spring and Metal Part: Stainless Steel/Hast C

LP CDPN(Double) Cartridge Seal



主要技术参数

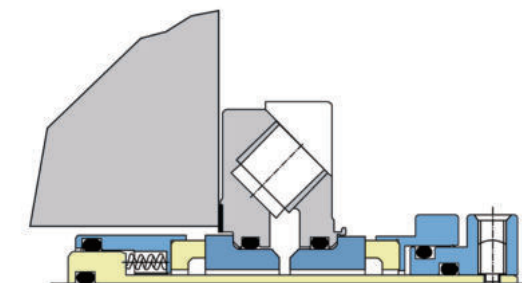
规格范围: 24mm - 85mm

静环: Ceramic/Sic/TC

动环: Carbon/Sic/TC

辅助密封: Viton/Kalrez/Aflas, etc.

弹簧及金属部件: Stainless Steel/Hast C



Main parameters

Inner Diameter: 25mm to 85mm

Stationary Ring: Ceramic/Sic/TC

Rotary Ring: Carbon/Sic/TC

Secondary Seal: Viton/Kalrez/Aflas, etc.

Spring and Metal Part: Stainless Steel/Hast C

LPFGD-325 Cartridge Seal for Flue Gas Desulphurization

用于电厂锅炉给水泵、烟气脱硫、电厂脱硫系统及浆液循环泵
For power plant boiler feed pumps, FGD, desulfurization system of power plant and slurry circulating pumps.

结构特点

- LPFGD-325 是一种固定筒式安装密封组件，设计用于容纳烟气脱硫过程中常见的浓稠、腐蚀性和侵蚀性浆料；
- 无堵塞保护弹簧可防止固体堆积，从而提高可靠性；
- 坚固、耐腐蚀的材料。

主要技术参数

温度: -40°C to +150°C
压力: ≤ 1.6MPa
转速: ≤ 20m/s
静环: Carbon/Sic
动环: Carbon/Sic
辅助密封: Viton/NBR/EPDM
弹簧及金属部件: Stainless Steel/Hast C



Features

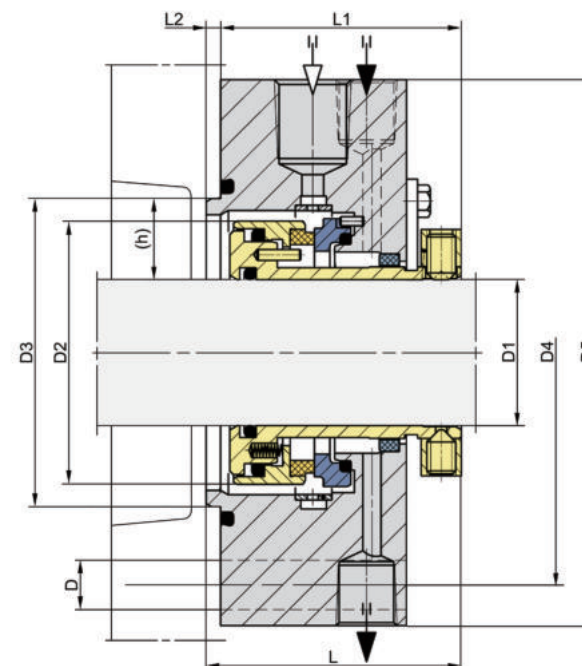
- LPFGD-325 is a single, stationary cartridge-mounted seal assembly designed to contain the thick, corrosive and erosive slurries typically found in flue gas desulphurization processes;
- Non-clogging protected springs offer improved reliability by preventing build-up of solids;
- Robust, corrosion-resistant materials.



Main parameters

Temperature: -40°C to +150°C
Pressure: ≤ 1.6MPa
Speed: ≤ 20m/s
Stationary Ring: Carbon/Sic
Rotary Ring: Carbon/Sic
Secondary Seal: Viton/NBR/EPDM
Spring and Metal Part: Stainless Steel/Hast C

LP APItex-S



Working Conditions

Mediums: Chemical, Food, Oil, Petroleum, Pharmaceuticals
Paper and pulp, Sewage treatment
Temperature: -40°C to +176°C
Pressure: ≤ 2.2MPa
Speed: ≤ 23m/s

Materials:
Stationary Ring: Carbon/Sic/Ssic/TC
Rotary Ring: Sic/Ssic/TC
Secondary Seal: Viton/EPDM/Chemraz/Kalrez/Aflas, etc.
Spring and Metal Part: Stainless Steel/Hast C

主要技术参数

介质: 化工、食品、石油、制药、造纸、纸浆和污水处理
温度: -40°C to +176°C
压力: ≤ 2.2MPa
转速: ≤ 23m/s

材料:
静环: Carbon/Sic/Ssic/TC
动环: Sic/Ssic/TC
辅助密封: Viton/EPDM/Chemraz/Kalrez/Aflas, etc.
弹簧及金属件: 不锈钢 / 哈氏合金

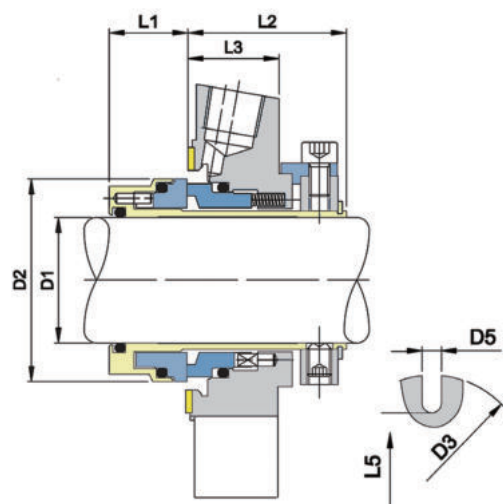


| D1(mm) | 20 | 25 | 30 | 35 | 40 | 45 | 50 | 55 | 60 | 65 | 70 | 75 | 80 | 85 | 90 | 95 | 100 | 105 | 110 |
|--------|------|------|------|------|------|------|------|------|------|------|------|------|-----|-------|-------|-------|-------|-------|-------|
| D2 | 50.4 | 55.4 | 60.4 | 65.4 | 70.4 | 75.4 | 80.4 | 85.4 | 96 | 101 | 106 | 111 | 116 | 123.5 | 128.5 | 133.5 | 138.5 | 143.5 | 152.5 |
| D3 | 58 | 63 | 68 | 73 | 78 | 83 | 88 | 93 | 105 | 110 | 115 | 120 | 125 | 136 | 141 | 146 | 151 | 156 | 161 |
| D4 | 105 | 110 | 115 | 120 | 125 | 135 | 140 | 145 | 160 | 165 | 170 | 175 | 185 | 190 | 195 | 200 | 205 | 210 | 215 |
| D5 | 127 | 132 | 137 | 142 | 147 | 162 | 167 | 172 | 187 | 192 | 197 | 202 | 218 | 223 | 228 | 233 | 238 | 243 | 248 |
| L | 70.5 | 70.5 | 70.5 | 70.5 | 70.5 | 70.5 | 72.5 | 72.5 | 87 | 87 | 87 | 87 | 87 | 86 | 86 | 86 | 86 | 86 | 86 |
| L1 | 66.5 | 66.5 | 66.5 | 66.5 | 66.5 | 66.5 | 68.5 | 68.5 | 83 | 83 | 83 | 83 | 83 | 71.5 | 71.5 | 71.5 | 71.5 | 71.5 | 71.5 |
| L2 | 4 | 4 | 4 | 4 | 4 | 4 | 4 | 4 | 4 | 4 | 4 | 4 | 4 | 14.5* | 14.5* | 14.5* | 14.5* | 14.5* | 14.5* |
| D | 13.5 | 13.5 | 13.5 | 13.5 | 13.5 | 17.5 | 17.5 | 17.5 | 17.5 | 17.5 | 17.5 | 17.5 | 22 | 22 | 22 | 22 | 22 | 22 | 22 |

*Immersion depth of seal sleeve into the stuffing box.

Remarks: imported seal, specially designed cartridge seal for plotting and customization subject to your sample and drawing.
ADD.: No. 5, Yunkai Road, Huangpu District, Guangzhou, China.
TEL.: +86-020-36158139, +86-020-36158280

LP TEXSN



主要技术参数

介质: 化工、食品、石油、制药、造纸、纸浆和污水处理
温度: 根据密封圈材质而定
压力: $\leq 2.8\text{MPa}$
转速: $\leq 35\text{m/s}$

材料:
静环: Carbon/Sic/Ssic/TC
动环: Sic/Ssic/TC
辅助密封: Viton/EPDM/Chemraz/Kalrez/Aflas, etc.
弹簧及金属件: 不锈钢 / 哈氏合金

Working Conditions

Mediums: Chemical, Food, Oil, Petroleum, Pharmaceuticals
Paper and pulp, Sewage treatment
Temperature: Elastomer dependent
Pressure: $\leq 2.8\text{MPa}$
Speed: $\leq 35\text{m/s}$

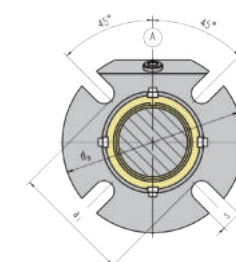
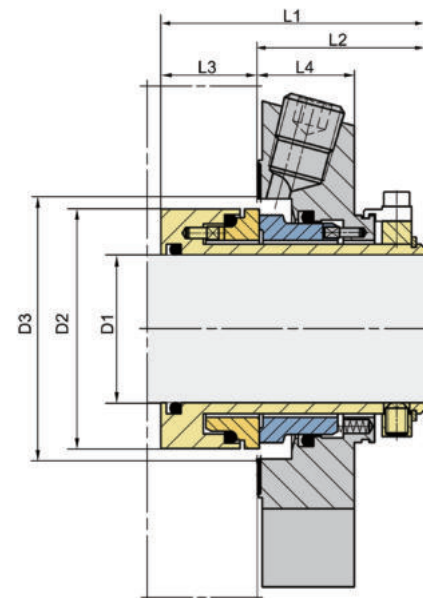
Materials:
Stationary Ring: Carbon/Sic/Ssic/TC
Rotary Ring: Sic/Ssic/TC
Secondary Seal: Viton/EPDM/Chemraz/Kalrez/Aflas, etc.
Spring and Metal Part: Stainless Steel/Hast C

| D1(mm) | D2 | D3 | D5 | L1 | L2 | L3 | L5 |
|--------|------|-----|------|------|------|----|-----|
| 24 | 43.5 | 104 | 12.5 | 19 | 38 | 25 | 62 |
| 25 | 43.5 | 104 | 12.5 | 19 | 38 | 25 | 62 |
| 28 | 46.5 | 104 | 12.5 | 19 | 38 | 25 | 62 |
| 30 | 48.5 | 104 | 12.5 | 19 | 38 | 25 | 67 |
| 32 | 50.5 | 104 | 12.5 | 19 | 38 | 25 | 67 |
| 33 | 50.5 | 104 | 12.5 | 19 | 38 | 25 | 67 |
| 35 | 53.5 | 110 | 12.5 | 19 | 38 | 25 | 70 |
| 38 | 56.5 | 125 | 14.7 | 19 | 38 | 25 | 75 |
| 40 | 58.5 | 125 | 14.7 | 19 | 38 | 25 | 75 |
| 42 | 60.5 | 133 | 14.7 | 19 | 38 | 25 | 80 |
| 43 | 61.5 | 133 | 14.7 | 19 | 38 | 25 | 80 |
| 45 | 63.5 | 140 | 14.7 | 19 | 38 | 25 | 82 |
| 48 | 66.5 | 140 | 14.7 | 19 | 38 | 25 | 82 |
| 50 | 68.5 | 140 | 14.7 | 19 | 38 | 25 | 87 |
| 53 | 71.5 | 150 | 17.5 | 19 | 38 | 25 | 92 |
| 55 | 73.5 | 150 | 17.5 | 19 | 38 | 25 | 92 |
| 60 | 78.5 | 160 | 17.5 | 19 | 38 | 25 | 100 |
| 65 | 83.5 | 165 | 17.5 | 19 | 38 | 25 | 105 |
| 70 | 88.5 | 180 | 17.5 | 19 | 38 | 25 | 120 |
| 75 | 100 | 190 | 17.5 | 20.5 | 41.5 | 30 | 125 |
| 80 | 105 | 190 | 17.5 | 20.5 | 41.5 | 30 | 130 |
| 85 | 110 | 220 | 21.5 | 20.5 | 41.5 | 30 | 135 |
| 90 | 115 | 220 | 21.5 | 20.5 | 41.5 | 30 | 140 |
| 95 | 120 | 220 | 21.5 | 20.5 | 41.5 | 30 | 145 |
| 100 | 125 | 220 | 21.5 | 20.5 | 41.5 | 30 | 150 |

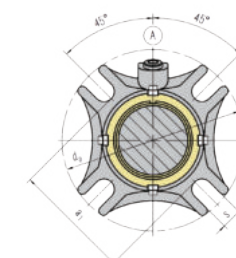
| D1(inch) | D2 | D3 | D5 | L1 | L2 | L3 | L5 |
|----------|-------|-------|-------|-------|-------|-------|-------|
| 1.000 | 1.713 | 4.094 | 0.492 | 0.748 | 1.496 | 0.984 | 2.441 |
| 1.125 | 1.831 | 4.094 | 0.492 | 0.748 | 1.496 | 0.984 | 2.441 |
| 1.250 | 1.988 | 4.094 | 0.492 | 0.748 | 1.496 | 0.984 | 2.638 |
| 1.375 | 2.107 | 4.331 | 0.492 | 0.748 | 1.496 | 0.984 | 2.756 |
| 1.500 | 2.225 | 4.921 | 0.579 | 0.748 | 1.496 | 0.984 | 2.953 |
| 1.625 | 2.382 | 5.236 | 0.579 | 0.748 | 1.496 | 0.984 | 3.150 |
| 1.750 | 2.500 | 5.512 | 0.579 | 0.748 | 1.496 | 0.984 | 3.228 |
| 1.875 | 2.618 | 5.512 | 0.579 | 0.748 | 1.496 | 0.984 | 3.228 |
| 2.000 | 2.697 | 5.906 | 0.579 | 0.748 | 1.496 | 0.984 | 3.425 |
| 2.125 | 2.815 | 6.102 | 0.689 | 0.748 | 1.496 | 0.984 | 3.622 |
| 2.250 | 3.012 | 6.299 | 0.689 | 0.748 | 1.496 | 0.984 | 3.937 |
| 2.375 | 3.091 | 6.469 | 0.689 | 0.748 | 1.496 | 0.984 | 3.937 |
| 2.500 | 3.209 | 6.693 | 0.689 | 0.748 | 1.496 | 0.984 | 4.055 |
| 2.625 | 3.406 | 7.067 | 0.689 | 0.748 | 1.496 | 0.984 | 4.724 |
| 2.750 | 3.484 | 7.480 | 0.689 | 0.748 | 1.496 | 0.984 | 4.724 |
| 2.875 | 3.858 | 7.480 | 0.689 | 0.807 | 1.634 | 1.181 | 4.843 |
| 3.000 | 3.937 | 7.480 | 0.689 | 0.807 | 1.634 | 1.181 | 4.921 |
| 3.125 | 4.134 | 8.661 | 0.689 | 0.807 | 1.634 | 1.181 | 5.118 |
| 3.250 | 4.252 | 8.661 | 0.846 | 0.807 | 1.634 | 1.181 | 5.236 |
| 3.375 | 4.331 | 8.661 | 0.846 | 0.807 | 1.634 | 1.181 | 5.315 |
| 3.500 | 4.528 | 8.661 | 0.846 | 0.807 | 1.634 | 1.181 | 5.512 |
| 3.625 | 4.606 | 8.661 | 0.846 | 0.807 | 1.634 | 1.181 | 5.591 |
| 3.750 | 4.725 | 8.661 | 0.846 | 0.807 | 1.634 | 1.181 | 5.709 |
| 3.875 | 4.921 | 8.661 | 0.846 | 0.807 | 1.634 | 1.181 | 5.906 |
| 4.000 | 4.921 | 8.661 | 0.846 | 0.807 | 1.634 | 1.181 | 5.906 |

备注: 进口机械密封、特殊设计密封, 可来样来图测绘定制
地址: 广州市黄埔区云开路5号
电话: +86-020-36158139, +86-020-36158280

LP Cartex Single Seals(SN)



Machined cover version



Cast cover version



主要技术参数

介质: 化工、食品、石油、制药、造纸、纸浆和污水处理
温度: -40°C to $+220^{\circ}\text{C}$
压力: $\leq 2.5\text{MPa}$
转速: $\leq 16\text{m/s}$

材料:
静环: Carbon/Sic/Ssic/TC
动环: Sic/Ssic/TC
辅助密封: Viton/EPDM/Chemraz/Kalrez/Aflas, etc.
弹簧及金属件: 不锈钢 / 哈氏合金

Working Conditions

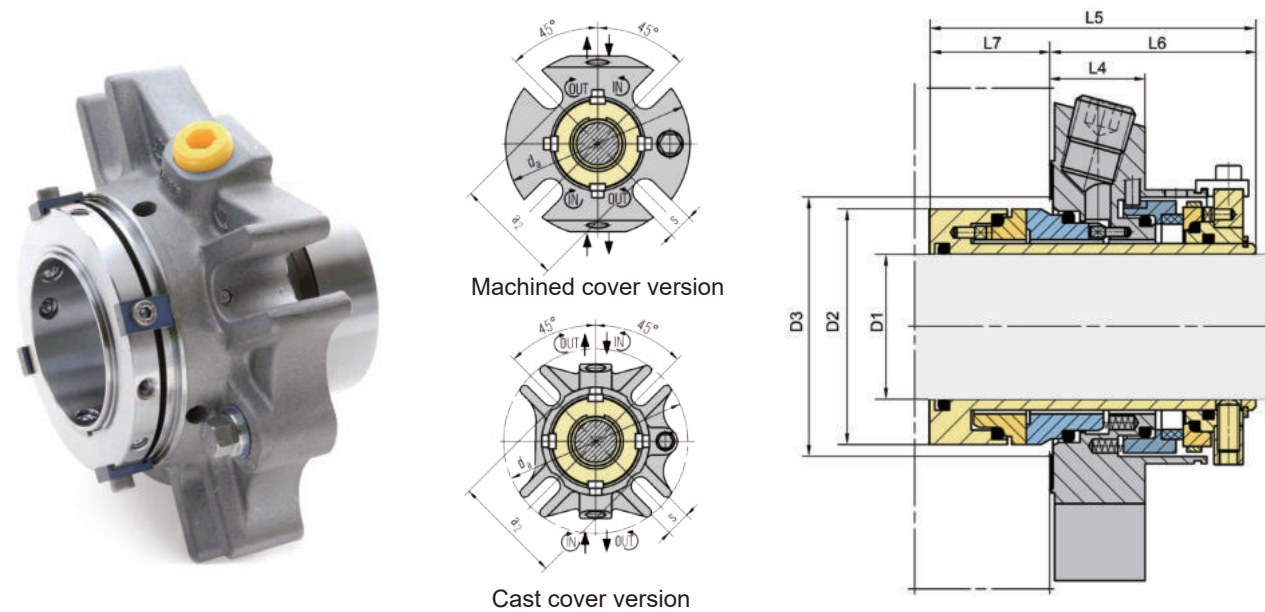
Mediums: Chemical, Food, Oil, Petroleum, Pharmaceuticals
Paper and pulp, Sewage treatment
Temperature: -40°C to $+220^{\circ}\text{C}$
Pressure: $\leq 2.5\text{MPa}$
Speed: $\leq 26\text{m/s}$

Materials:
Stationary Ring: Carbon/Sic/Ssic/TC
Rotary Ring: Sic/Ssic/TC
Secondary Seal: Viton/EPDM/Chemraz/Kalrez/Aflas, etc.
Spring and Metal Part: Stainless Steel/Hast C

| D1(mm) | 25 | 28 | 30 | 32 | 33 | 35 | 38 | 40 | 42 | 43 | 45 | 48 | 50 | 53 | 55 | 60 | 65 | 70 | 75 | 80 | 85 | 90 | 95 | 100 |
|---------|------|------|------|------|------|------|------|------|------|------|------|------|------|------|------|------|------|------|-------|-------|-------|-------|-------|-------|
| D2 | 43 | 46 | 48 | 49.8 | 49.8 | 53 | 56 | 58 | 60.5 | 60.5 | 62.5 | 65.6 | 68 | 72 | 73 | 78 | 84.8 | 93 | 100 | 106.4 | 109.5 | 115.9 | 119.1 | 125.4 |
| D3 Min. | 44 | 47 | 49 | 51 | 51 | 54 | 57 | 59 | 61.5 | 61.5 | 64 | 67 | 69 | 73 | 74 | 79 | 85.7 | 95 | 101.6 | 108 | 111.1 | 117.5 | 120.7 | 127 |
| D3 Max. | 51.5 | 52 | 56 | 57 | 57 | 61.5 | 66 | 68 | 69.5 | 70.5 | 73 | 75 | 78 | 87 | 83 | 91 | 98.5 | 108 | 118 | 124 | 128 | 135 | 138 | 144 |
| L1 | 67 | 67 | 67 | 67 | 67 | 67 | 67 | 67 | 67 | 67 | 67 | 67 | 67 | 67 | 67 | 67 | 67 | 67 | 84 | 84 | 84 | 84 | 84 | 84 |
| L2 | 42.4 | 42.4 | 42.4 | 42.4 | 42.4 | 42.4 | 42.4 | 42.4 | 42.4 | 42.4 | 42.4 | 42.4 | 42.4 | 42.4 | 42.4 | 42.4 | 42.4 | 42.4 | 57.4 | 57.4 | 57.4 | 57.4 | 57.4 | 57.4 |
| L3 | 24.6 | 24.6 | 24.6 | 24.6 | 24.6 | 24.6 | 24.6 | 24.6 | 24.6 | 24.6 | 24.6 | 24.6 | 24.6 | 24.6 | 24.6 | 24.6 | 24.6 | 24.6 | 26.6 | 26.6 | 26.6 | 26.6 | 26.6 | 26.6 |
| L4 | 25.4 | 25.4 | 25.4 | 25.4 | 25.4 | 25.4 | 25.4 | 25.4 | 25.4 | 25.4 | 25.4 | 25.4 | 25.4 | 25.4 | 25.4 | 25.4 | 25.4 | 25.4 | 28 | 28 | 28 | 28 | 28 | 28 |
| a1 | 62 | 62 | 65 | 67 | 67 | 70 | 75 | 75 | 80 | 80 | 81 | 84 | 87 | 97 | 90 | 102 | 109 | 118 | 129 | 135 | 139 | 145 | 148 | 154 |
| da | 105 | 105 | 105 | 108 | 108 | 113 | 123 | 123 | 133 | 133 | 138 | 138 | 148 | 148 | 148 | 157 | 163 | 178 | 190 | 195 | 198 | 205 | 208 | 218 |
| S | 13.2 | 13.2 | 13.2 | 13.2 | 13.2 | 13.2 | 13.2 | 14.2 | 14.2 | 14.2 | 14.2 | 14.2 | 14.2 | 14.2 | 14.2 | 14.2 | 14.2 | 14.2 | 14.2 | 14.2 | 14.2 | 22.0 | 22.0 | 22.0 |

Remarks: imported seal, specially designed cartridge seal for plotting and customization subject to your sample and drawing.
ADD.: No. 5, Yunkai Road, Huangpu District, Guangzhou, China.
TEL.: +86-020-36158139, +86-020-36158280

LP Cartex Dual Seals(DN)



主要技术参数

介质: 化工、食品、石油、制药、造纸、纸浆和污水处理
温度: -40°C to $+220^{\circ}\text{C}$
压力: $\leq 2.5\text{MPa}$
转速: $\leq 16\text{m/s}$

材料:

静环: Carbon/Sic/Ssic/TC

动环: Sic/Ssic/TC

辅助密封: Viton/EPDM/Chemraz/Kalrez/Aflas, etc.

弹簧及金属件: 不锈钢 / 哈氏合金

Working Conditions

Mediums: Chemical, Food, Oil, Petroleum, Pharmaceuticals
Paper and pulp, Sewage treatment
Temperature: -40°C to $+220^{\circ}\text{C}$
Pressure: $\leq 2.5\text{MPa}$
Speed: $\leq 16\text{m/s}$

Materials:

Stationary Ring: Carbon/Sic/Ssic/TC

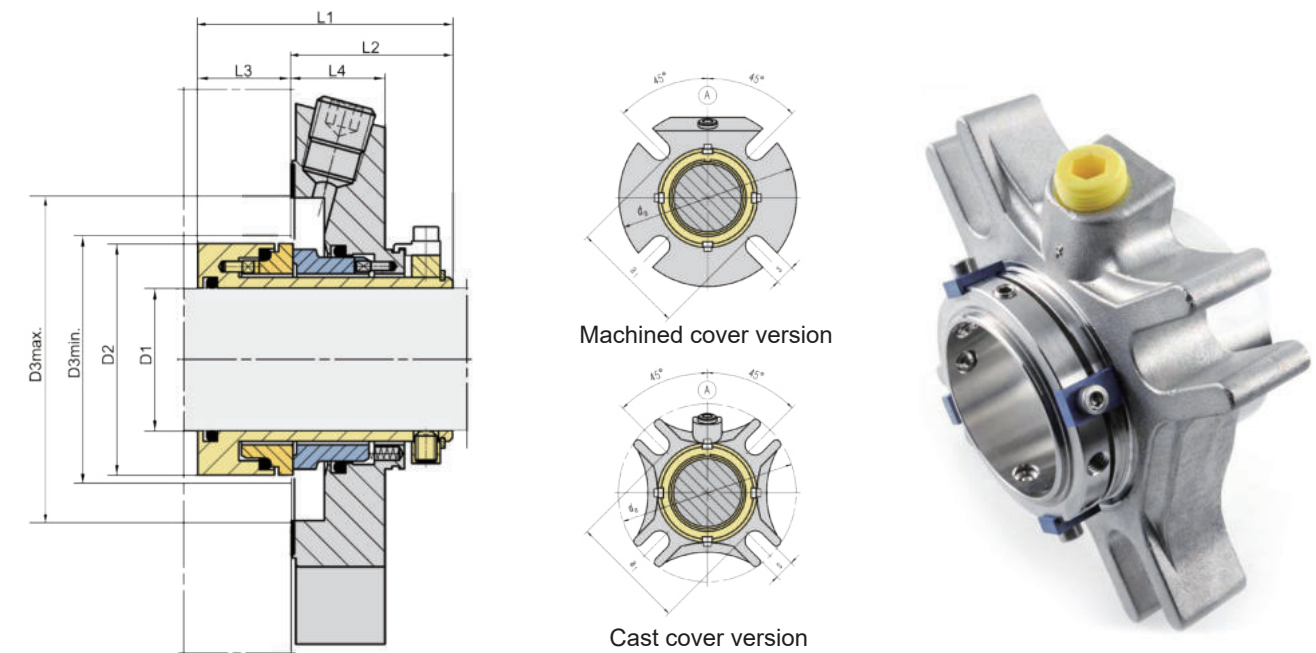
Rotary Ring: Sic/Ssic/TC

Secondary Seal: Viton/EPDM/Chemraz/Kalrez/Aflas, etc.

Spring and Metal Part: Stainless Steel/Hast C

| D1(mm) | 25 | 28 | 30 | 32 | 33 | 35 | 38 | 40 | 42 | 43 | 45 | 48 | 50 | 53 | 55 | 60 | 65 | 70 | 75 | 80 | 85 | 90 | 95 | 100 |
|---------|------|------|------|------|------|------|------|------|------|------|------|------|------|------|------|------|------|------|-------|-------|-------|-------|-------|-------|
| D2 | 43 | 46 | 48 | 49.8 | 49.8 | 53 | 56 | 58 | 60.5 | 60.5 | 62.5 | 65.6 | 68 | 72 | 73 | 78 | 84.8 | 93 | 100 | 106.4 | 109.5 | 115.9 | 119.1 | 125.4 |
| D3 Min. | 44 | 47 | 49 | 51 | 51 | 54 | 57 | 59 | 61.5 | 61.5 | 64 | 67 | 69 | 73 | 74 | 79 | 85.7 | 95 | 101.6 | 108 | 111.1 | 117.5 | 120.7 | 127 |
| D3 Max. | 51.5 | 52 | 56 | 57 | 57 | 61.5 | 66 | 68 | 69.5 | 70.5 | 73 | 75 | 78 | 87 | 83 | 91 | 98.5 | 108 | 118 | 124 | 128 | 135 | 138 | 144 |
| L4 | 25.4 | 25.4 | 25.4 | 25.4 | 25.4 | 25.4 | 25.4 | 25.4 | 25.4 | 25.4 | 25.4 | 25.4 | 25.4 | 25.4 | 25.4 | 25.4 | 25.4 | 28 | 28 | 28 | 28 | 28 | 28 | 28 |
| L5 | 86.5 | 86.5 | 86.5 | 86.5 | 86.5 | 86.5 | 86.5 | 86.5 | 86.5 | 86.5 | 86.5 | 86.5 | 86.5 | 86.5 | 86.5 | 86.5 | 86.5 | 108 | 108 | 108 | 108 | 108 | 108 | 108 |
| L6 | 53.4 | 53.4 | 53.4 | 53.4 | 53.4 | 53.4 | 53.4 | 53.4 | 53.4 | 53.4 | 53.4 | 53.4 | 53.4 | 53.4 | 53.4 | 53.4 | 53.4 | 63.9 | 63.9 | 63.9 | 63.9 | 63.9 | 63.9 | 63.9 |
| L7 | 33.1 | 33.1 | 33.1 | 33.1 | 33.1 | 33.1 | 33.1 | 33.1 | 33.1 | 33.1 | 33.1 | 33.1 | 33.1 | 33.1 | 33.1 | 33.1 | 33.1 | 44.1 | 44.1 | 44.1 | 44.1 | 44.1 | 44.1 | 44.1 |
| a2 | 62 | 61 | 67 | 70 | 70 | 72 | 75 | 77 | 80 | 80 | 82 | 85 | 87 | 97 | 92 | 102 | 109 | 118 | 129 | 135 | 139 | 145 | 148 | 154 |
| da | 105 | 105 | 105 | 108 | 108 | 113 | 123 | 123 | 133 | 133 | 138 | 138 | 148 | 148 | 148 | 157 | 163 | 178 | 190 | 195 | 198 | 205 | 208 | 218 |
| s | 13.2 | 13.2 | 13.2 | 13.2 | 13.2 | 13.2 | 13.2 | 14.2 | 14.2 | 14.2 | 14.2 | 14.2 | 14.2 | 18.0 | 18.0 | 18.0 | 18.0 | 18.0 | 18.0 | 22.0 | 22.0 | 22.0 | 22.0 | 22.0 |

LP Cartex ANSI Single seals



主要技术参数

介质: 化工、食品、石油、制药、造纸、纸浆和污水处理
温度: $\leq -40^{\circ}\text{C}$ to $+220^{\circ}\text{C}$
压力: $\leq 2.5\text{MPa}$
转速: $\leq 16\text{m/s}$

材料:

静环: Carbon/Sic/Ssic/TC

动环: Sic/Ssic/TC

辅助密封: Viton/EPDM/Chemraz/Kalrez/Aflas, etc.

弹簧及金属件: 不锈钢 / 哈氏合金

Working Conditions

Mediums: Chemical, Food, Oil, Petroleum, Pharmaceuticals
Paper and pulp, Sewage treatment
Temperature: $\leq -40^{\circ}\text{C}$ to $+220^{\circ}\text{C}$
Pressure: $\leq 2.5\text{MPa}$
Speed: $\leq 16\text{m/s}$

Materials:

Stationary Ring: Carbon/Sic/Ssic/TC

Rotary Ring: Sic/Ssic/TC

Secondary Seal: Viton/EPDM/Chemraz/Kalrez/Aflas, etc.

Spring and Metal Part: Stainless Steel/Hast C

| D1(inch) | 1.000 | 1.125 | 1.250 | 1.375 | 1.500 | 1.625 | 1.750 | 1.875 | 2.000 | 2.125 | 2.250 | 2.375 | 2.500 | 2.625 | 2.750 | 3.000 | 3.250 | 3.375 |
|----------|---------|---------|---------|---------|---------|---------|---------|---------|---------|---------|---------|---------|---------|---------|---------|---------|---------|---------|
| D2 | 1.693 | 1.713 | 1.969 | 1.961 | 2.200 | 2.340 | 2.461 | 2.583 | 2.677 | 2.834 | 2.960 | 3.070 | 3.212 | 3.338 | 3.660 | 3.937 | 4.189 | 4.689 |
| D3 Min. | 1.732 | 1.752 | 2.008 | 2.000 | 2.244 | 2.421 | 2.500 | 2.661 | 2.756 | 2.913 | 3.039 | 3.125 | 3.291 | 3.417 | 3.740 | 4.016 | 4.268 | 4.750 |
| D3 Max. | 2.205 | 2.205 | 2.402 | 2.402 | 2.717 | 2.795 | 2.953 | 3.070 | 3.189 | 3.583 | 3.583 | 3.590 | 3.937 | 4.016 | 4.370 | 4.724 | 4.921 | 5.433 |
| L1 | 2.638 | 2.638 | 2.638 | 2.638 | 2.638 | 2.638 | 2.638 | 2.638 | 2.638 | 2.638 | 2.638 | 2.638 | 2.638 | 2.638 | 2.638 | 3.307 | 3.307 | 3.307 |
| L2 | 1.669 | 1.669 | 1.669 | 1.669 | 1.669 | 1.669 | 1.669 | 1.669 | 1.669 | 1.669 | 1.669 | 1.669 | 1.669 | 1.669 | 1.669 | 1.929 | 2.260 | 2.260 |
| L3 | 0.969 | 0.969 | 0.969 | 0.969 | 0.969 | 0.969 | 0.969 | 0.969 | 0.969 | 0.969 | 0.969 | 0.969 | 0.969 | 0.969 | 0.969 | 0.709 | 1.047 | 1.047 |
| L4 | 1.000 | 1.000 | 1.000 | 1.000 | 1.000 | 1.000 | 1.000 | 1.000 | 1.000 | 1.000 | 1.000 | 1.000 | 1.000 | 1.122 | 1.250 | 1.260 | 1.260 | 1.000 |
| a1 | 2.756 | 2.440 | 2.638 | 2.760 | 2.950 | 3.030 | 3.228 | 3.190 | 3.430 | 3.820 | 3.858 | 4.020 | 4.528 | 4.528 | 4.646 | 5.000 | 5.315 | 5.827 |
| da | 0.433 | 0.437 | 0.433 | 0.437 | 0.551 | 0.551 | 0.559 | 0.551 | 0.630 | 0.650 | 0.650 | 0.709 | 0.709 | 0.630 | 0.709 | 0.709 | 0.709 | 0.866 |
| s | 1/4 NPT | 1/4 NPT | 1/4 NPT | 1/4 NPT | 3/8 NPT | 3/8 NPT | 3/8 NPT | 3/8 NPT | 3/8 NPT | 3/8 NPT | 3/8 NPT | 3/8 NPT | 3/8 NPT | 3/8 NPT | 3/8 NPT | 3/8 NPT | 3/8 NPT | 3/8 NPT |

备注: 进口机械密封、特殊设计密封, 可来样来图测绘定制

地址: 广州市黄埔区云开路5号

电话: +86-020-36158139, +86-020-36158280

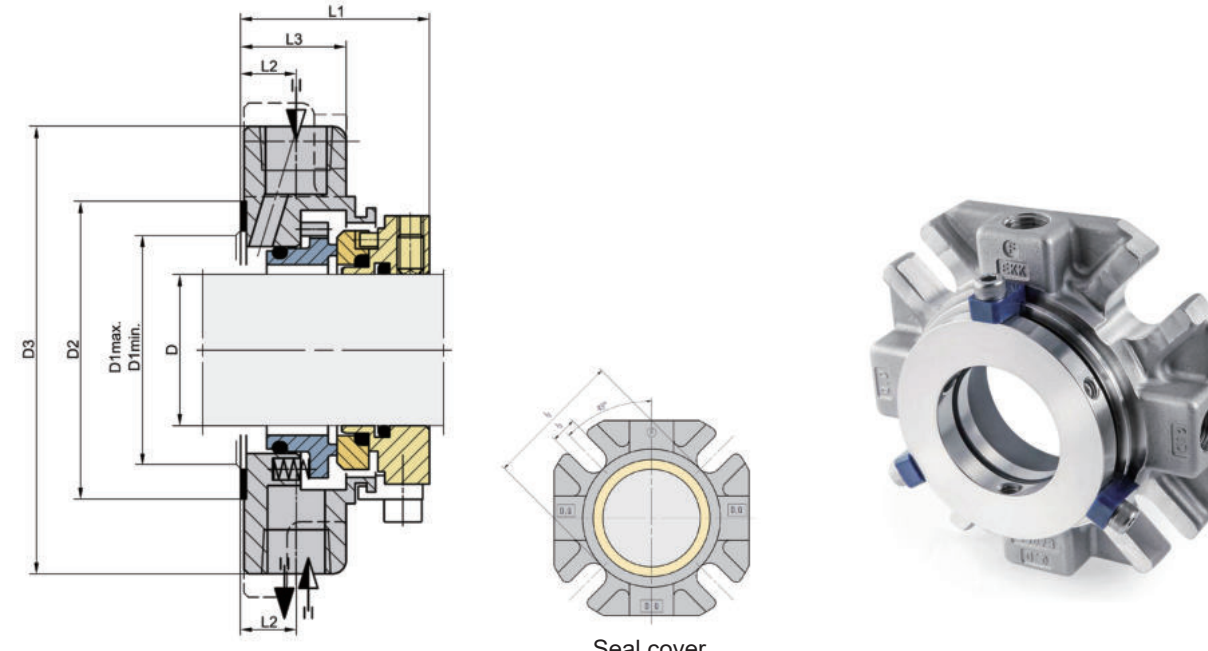
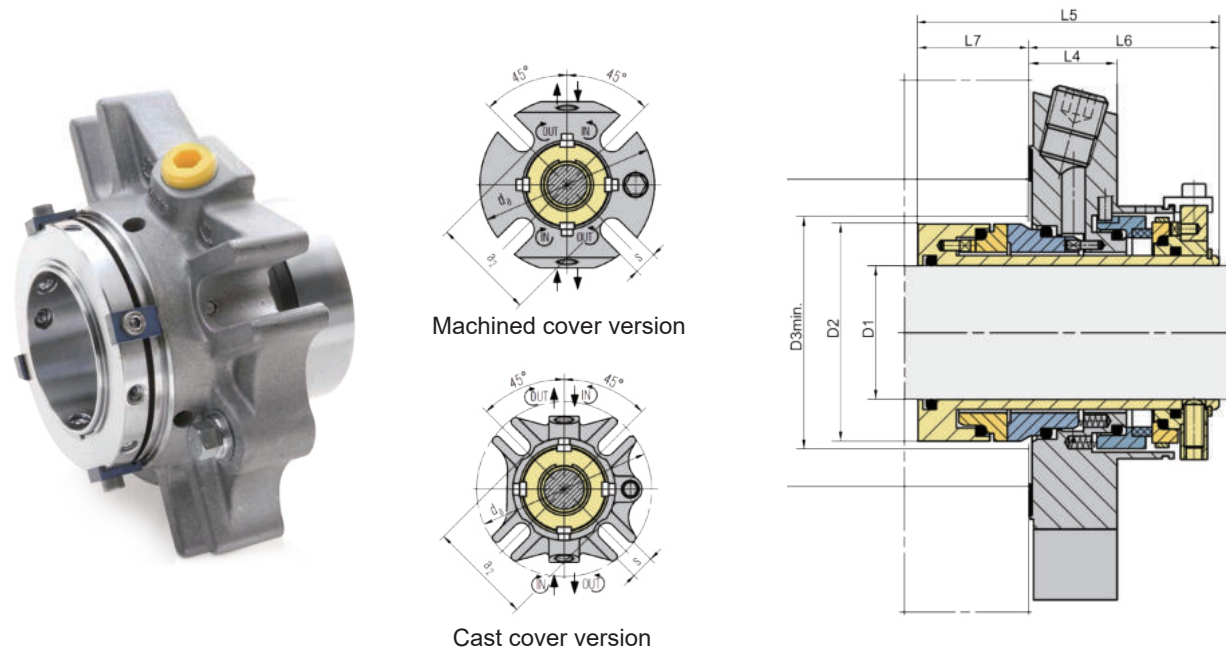
Remarks: imported seal, specially designed cartridge seal for plotting and customization subject to your sample and drawing.

ADD.: No. 5, Yunkai Road, Huangpu District, Guangzhou, China.

TEL.: +86-020-36158139, +86-020-36158280

LP Cartex ANSI Dual seals

LP MA290/MA390



主要技术参数

介质: 化工、食品、石油、制药、造纸、纸浆和污水处理
温度: -40°C to +220°C
压力: ≤2.5MPa
转速: ≤16m/s

材料:
静环: Carbon/Sic/Ssic/TC
动环: Sic/Ssic/TC
辅助密封: Viton/EPDM/Chemraz/Kalrez/Aflas, etc.
弹簧及金属件: 不锈钢 / 哈氏合金

Working Conditions

Mediums: Chemical, Food, Oil, Petroleum, Pharmaceuticals
Paper and pulp, Sewage treatment
Temperature: -40°C to +220°C
Pressure: ≤2.5MPa
Speed: ≤16m/s

Materials:
Stationary Ring: Carbon/Sic/Ssic/TC
Rotary Ring: Sic/Ssic/TC
Secondary Seal: Viton/EPDM/Chemraz/Kalrez/Aflas, etc.
Spring and Metal Part: Stainless Steel/Hast C

| D1(inch) | 1.000 | 1.125 | 1.250 | 1.375 | 1.500 | 1.625 | 1.750 | 1.875 | 2.000 | 2.125 | 2.250 | 2.375 | 2.500 | 2.625 | 2.750 | 3.000 | 3.250 | 3.375 |
|----------|-------|-------|-------|-------|-------|-------|-------|-------|-------|-------|-------|-------|-------|-------|-------|-------|-------|-------|
| D2 | 1.693 | 1.713 | 1.969 | 1.961 | 2.200 | 2.340 | 2.461 | 2.583 | 2.677 | 2.834 | 2.960 | 3.070 | 3.212 | 3.338 | 3.660 | 3.937 | 4.189 | 4.689 |
| D3 Min. | 1.732 | 1.752 | 2.008 | 2.000 | 2.244 | 2.421 | 2.500 | 2.661 | 2.756 | 2.913 | 3.039 | 3.125 | 3.291 | 3.417 | 3.740 | 4.016 | 4.268 | 4.750 |
| D3 Max. | 2.205 | 2.205 | 2.402 | 2.402 | 2.717 | 2.795 | 2.953 | 3.070 | 3.189 | 3.583 | 3.583 | 3.590 | 3.937 | 4.016 | 4.370 | 4.724 | 4.921 | 5.433 |
| L4 | 1.000 | 1.000 | 1.000 | 1.000 | 1.000 | 1.000 | 1.000 | 1.000 | 1.000 | 1.000 | 1.000 | 1.000 | 1.122 | 1.250 | 1.260 | 1.260 | 1.260 | 1.000 |
| L5 | 3.406 | 3.228 | 3.406 | 3.406 | 3.406 | 3.406 | 3.406 | 3.406 | 3.406 | 3.406 | 3.406 | - | 3.406 | 3.406 | 3.406 | 4.252 | 4.252 | - |
| L6 | 2.102 | 3.228 | 2.102 | 2.083 | 2.102 | 2.102 | 2.102 | 2.102 | 2.102 | 2.102 | 2.102 | - | 2.102 | 2.102 | 2.102 | 2.516 | 2.516 | - |
| L7 | 1.303 | 1.343 | 1.303 | 1.303 | 1.303 | 1.303 | 1.303 | 1.303 | 1.303 | 1.303 | 1.303 | - | 1.303 | 1.303 | 1.303 | 1.736 | 1.736 | - |
| a2 | 2.441 | 2.441 | 2.756 | 2.756 | 2.953 | 3.091 | 3.228 | 3.307 | 3.425 | 3.819 | 3.858 | - | 4.528 | 4.528 | 4.646 | 5.000 | 5.315 | - |
| da | 3.937 | 4.134 | 4.252 | 4.213 | 4.488 | 4.924 | 5.118 | 5.118 | 5.472 | 5.512 | 5.866 | 6.181 | 6.693 | 6.378 | 7.441 | 7.835 | 7.830 | 8.189 |
| s | 0.433 | 0.437 | 0.433 | 0.437 | 0.551 | 0.551 | 0.559 | 0.551 | 0.630 | 0.650 | 0.650 | 0.709 | 0.709 | 0.630 | 0.709 | 0.709 | 0.709 | 0.866 |

主要技术参数

介质: 化工、食品、石油、制药、造纸、纸浆和污水处理
温度: ≤ -20°C to +160°C
压力: ≤ ≤1.0MPa
转速: ≤ ≤20m/s

材料:
静环: Carbon/Sic/Ssic/TC
动环: Sic/Ssic/TC
辅助密封: Viton/EPDM/Chemraz/Kalrez/Aflas, etc.
弹簧及金属件: 不锈钢 / 哈氏合金

Working Conditions

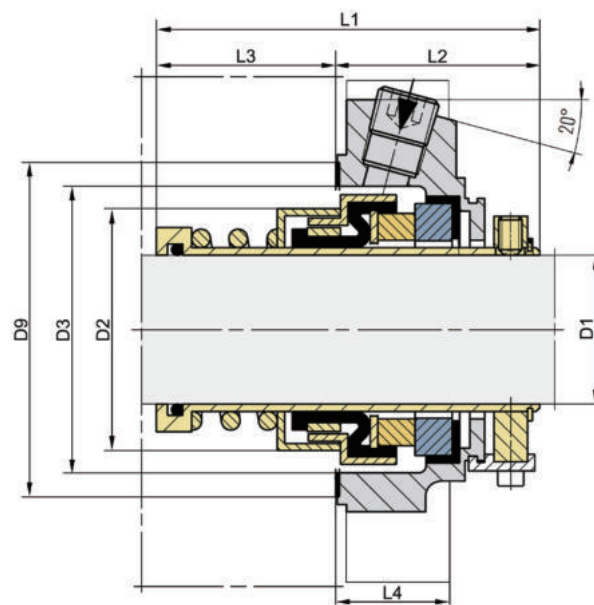
Working Conditions

Mediums: Chemical, Food, Oil, Petroleum, Pharmaceuticals
Paper and pulp, Sewage treatment
Temperature: -20°C to +160°C
Pressure: ≤1.0MPa
Speed: ≤20m/s

Materials:
Stationary Ring: Carbon/Sic/Ssic/TC
Rotary Ring: Sic/Ssic/TC
Secondary Seal: Viton/EPDM/Chemraz/Kalrez/Aflas, etc.
Spring and Metal Part: Stainless Steel/Hast C

| D(mm) | 20 | 24 | 25 | 28 | 30 | 32 | 33 | 35 | 38 | 40 | 43 | 45 | 48 | 50 | 53 | 55 | 58 | 60 | 63 | 65 | 70 | 75 | 80 | 85 | 90 | 95 | 100 |
|---------|-----|-----|-----|-----|-----|-----|-----|-----|-----|-----|-----|-----|-----|-----|-----|-----|-----|-----|-----|-----|-----|-----|-----|-----|-----|-----|-----|
| D1 Min. | 30 | 34 | 35 | 38 | 40 | 42 | 43 | 45 | 48 | 50 | 53 | 55 | 58 | 60 | 63 | 65 | 68 | 70 | 73 | 75 | 80 | 85 | 90 | 95 | 100 | 105 | 110 |
| D1 Max. | 51 | 51 | 51 | 54 | 56 | 56 | 66 | 66 | 66 | 66 | 71 | 71 | 81 | 81 | 81 | 81 | 96 | 96 | 96 | 96 | 102 | 114 | 114 | 124 | 124 | 134 | 134 |
| D2. | 58 | 58 | 58 | 63 | 63 | 63 | 73 | 73 | 73 | 73 | 78 | 78 | 88 | 88 | 88 | 88 | 103 | 103 | 103 | 103 | 109 | 121 | 121 | 131 | 131 | 141 | 141 |
| D3 | 104 | 104 | 104 | 108 | 108 | 108 | 118 | 118 | 118 | 118 | 128 | 128 | 138 | 138 | 138 | 138 | 164 | 164 | 164 | 164 | 178 | 193 | 193 | 208 | 208 | 218 | 218 |
| L1 | 42 | 42 | 42 | 42 | 42 | 42 | 42 | 42 | 42 | 42 | 42 | 42 | 42 | 44 | 44 | 44 | 44 | 46 | 46 | 46 | 46 | 46 | 49 | 49 | 49 | 49 | 49 |
| L2 | 60 | 60 | 60 | 65 | 65 | 65 | 75 | 75 | 75 | 75 | 80 | 80 | 90 | 90 | 90 | 90 | 105 | 105 | 105 | 105 | 111 | 123 | 123 | 133 | 133 | 143 | 143 |
| L3 | 12 | 12 | 12 | 12 | 12 | 12 | 14 | 14 | 14 | 14 | 14 | 14 | 14 | 14 | 14 | 14 | 18 | 18 | 18 | 18 | 18 | 18 | 18 | 18 | 20 | 20 | 20 |

LP Unitex



主要技术参数

介质: 化工、食品、石油、制药、造纸、纸浆和污水处理
温度: -20°C to $+140^{\circ}\text{C}$
压力: $\leq 1.2\text{MPa}$
转速: $\leq 10\text{m/s}$

材料:
静环: Carbon/Sic/Ssic/TC
动环: Sic/Ssic/TC
辅助密封: Viton/EPDM/Chemraz/Kalrez/Aflas, etc.
弹簧及金属件: 不锈钢 / 哈氏合金

Working Conditions

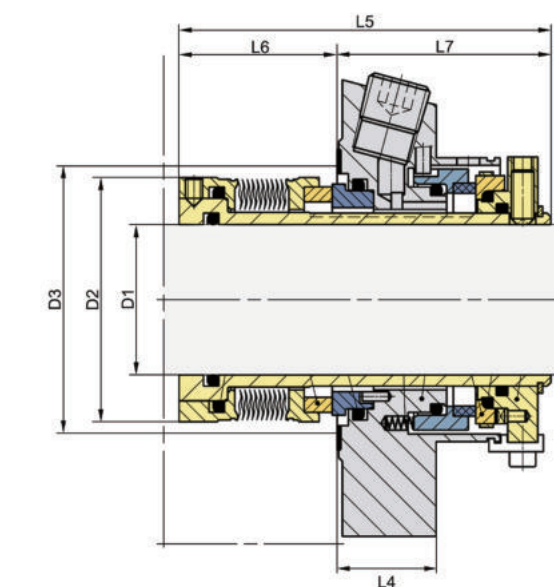
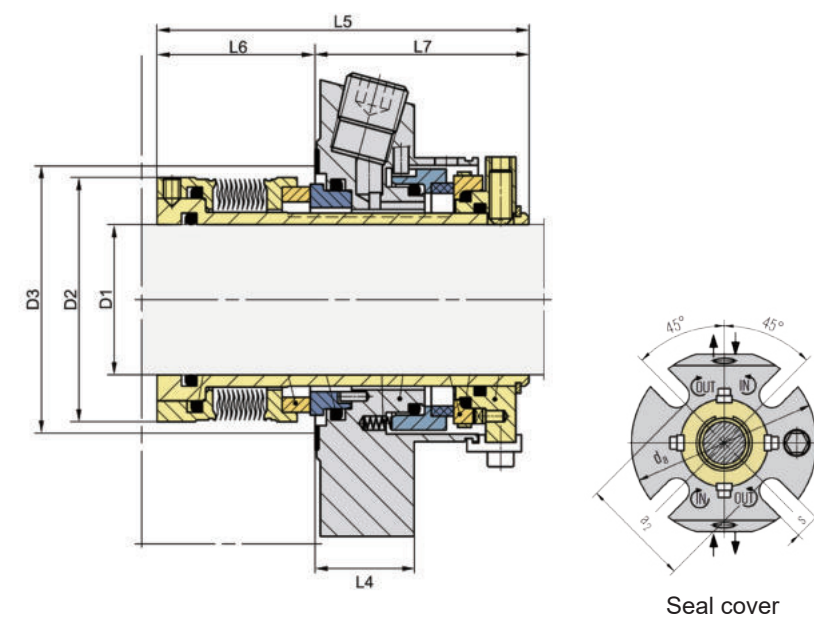
Mediums: Chemical, Food, Oil, Petroleum, Pharmaceuticals
Paper and pulp, Sewage treatment
Temperature: -20°C to $+140^{\circ}\text{C}$
Pressure: $\leq 1.2\text{MPa}$
Speed: $\leq 10\text{m/s}$

Materials:
Stationary Ring: Carbon/Sic/Ssic/TC
Rotary Ring: Sic/Ssic/TC
Secondary Seal: Viton/EPDM/Chemraz/Kalrez/Aflas, etc.
Spring and Metal Part: Stainless Steel/Hast C

| D1(mm) | 25 | 28 | 30 | 33 | 35 | 38 | 40 | 43 | 45 | 48 | 50 | 53 | 55 | 60 | 65 | 70 | 75 |
|---------|------|------|------|------|------|------|------|------|------|------|------|------|------|------|------|-------|-------|
| D2 | 38.4 | 42.4 | 42.4 | 45.0 | 49.1 | 51.3 | 54.3 | 56.3 | 59.8 | 61.8 | 64.8 | 66.8 | 71.0 | 76.5 | 83 | 88 | 93.4 |
| D3 Min. | 41.5 | 44.5 | 45.5 | 48.0 | 50.8 | 54.5 | 57.5 | 59.5 | 63.0 | 65.0 | 68.0 | 70.0 | 73.0 | 79.0 | 85.7 | 94.0 | 98.4 |
| D3 Max. | 51.0 | 52.0 | 56.0 | 57.0 | 61.5 | 66.0 | 68.0 | 70.5 | 73.0 | 75.0 | 78.0 | 87.0 | 83.0 | 91.0 | 98.5 | 108.0 | 118.0 |
| D9 | 60 | 60 | 63 | 65 | 68 | 73 | 75 | 78 | 79 | 82 | 85 | 95 | 90 | 100 | 108 | 116 | 125 |
| L1 | 65.5 | 68.0 | 68.0 | 69.5 | 72.5 | 72.5 | 75.5 | 76.5 | 76.5 | 78.0 | 80.5 | 81.5 | 83.5 | 85.5 | 88.0 | 92.0 | 93.5 |
| L2 | 41.0 | 41.5 | 41.5 | 42.0 | 44.0 | 44.0 | 44.5 | 44.5 | 44.5 | 45.0 | 47.0 | 47.0 | 47.0 | 47.0 | 48.5 | 48.5 | 49.0 |
| L3 | 24.5 | 26.5 | 26.5 | 27.5 | 28.5 | 28.5 | 31 | 32 | 32 | 33 | 33.5 | 34.5 | 36.5 | 38.5 | 39.5 | 43.5 | 44.5 |
| L4 | 23 | 23 | 23 | 23 | 26 | 26 | 26 | 26 | 26 | 26 | 28 | 28 | 28 | 28 | 28 | 28 | 28 |
| da | 105 | 105 | 105 | 110 | 107 | 123 | 123 | 133 | 130 | 130 | 148 | 148 | 148 | 157 | 162 | 175 | 190 |
| a | 62 | 62 | 67 | 67 | 70 | 75 | 77 | 80 | 82 | 84 | 87 | 97 | 92 | 102 | 110 | 118 | 127 |
| s | 13.2 | 13.2 | 13.2 | 13.2 | 13.2 | 14.7 | 14.7 | 14.7 | 14.2 | 14.2 | 14.7 | 17.5 | 17.5 | 17.5 | 17.5 | 17.5 | 17.5 |

备注: 进口机械密封、特殊设计密封, 可来样来图测绘定制
地址: 广州市黄埔区云开路5号
电话: +86-020-36158139, +86-020-36158280

LP Mtex Dual seals



主要技术参数

介质: 化工、食品、石油、制药、造纸、纸浆和污水处理
温度: $\leq -40^{\circ}\text{C}$ to $+220^{\circ}\text{C}$
压力: $\leq 2.5\text{MPa}$
转速: $\leq 20\text{m/s}$

材料:
静环: Carbon/Sic/Ssic/TC
动环: Sic/Ssic/TC
辅助密封: Viton/EPDM/FKM/Kalrez/Aflas, etc.
弹簧及金属件: 不锈钢 / 哈氏合金

Working Conditions

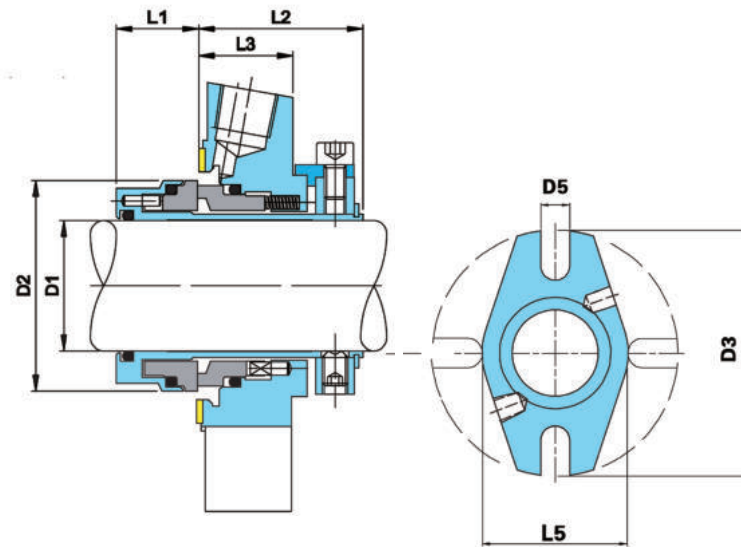
Mediums: Chemical, Food, Oil, Petroleum, Pharmaceuticals
Paper and pulp, Sewage treatment
Temperature: $\leq -40^{\circ}\text{C}$ to $+220^{\circ}\text{C}$
Pressure: $\leq 2.5\text{MPa}$
Speed: $\leq 20\text{m/s}$

Materials:
Stationary Ring: Carbon/Sic/Ssic/TC
Rotary Ring: Sic/Ssic/TC
Secondary Seal: Viton/EPDM/FKM/Kalrez/Aflas, etc.
Spring and Metal Part: Stainless Steel/Hast C

| D1(mm) | 25 | 30 | 32 | 33 | 35 | 38 | 40 | 43 | 45 | 48 | 50 | 53 | 55 | 60 | 65 | 70 | 75 | 80 |
|---------|-------|-------|-------|-------|-------|-------|-------|-------|-------|-------|-------|-------|-------|-------|-------|-------|-------|-------|
| D2 | 45.0 | 49.4 | 52.3 | 52.3 | 54.8 | 57.5 | 58.8 | 61.9 | 65.0 | 68.4 | 70.0 | 71.9 | 74.6 | 83.9 | 87.5 | 93.0 | 96.8 | 104.7 |
| D3 Min. | 47.0 | 52.0 | 54.5 | 54.5 | 58.0 | 60.0 | 62.0 | 64.5 | 68.5 | 71.0 | 73.0 | 75.0 | 77.0 | 87.0 | 90.0 | 98.0 | 101.6 | 108.0 |
| D3 Max. | 51.0 | 56.0 | 57.0 | 57.0 | 61.5 | 66.0 | 68.0 | 70.5 | 73.0 | 75.0 | 78.0 | 87.0 | 83.0 | 91.0 | 98.5 | 108.0 | 118.0 | 124.0 |
| L1 | 87.0 | 86.5 | 86.5 | 86.5 | 86.5 | 86.5 | 86.3 | 86.5 | 86.5 | 86.8 | 87.2 | 87.4 | 87.0 | 88.2 | 88.1 | 89.6 | 107.4 | 106.8 |
| L2 | 33.6 | 33.1 | 33.1 | 33.1 | 33.1 | 33.1 | 32.9 | 33.1 | 33.1 | 33.4 | 33.8 | 34.0 | 33.6 | 34.8 | 34.7 | 36.2 | 43.5 | 42.9 |
| L3 | 53.4 | 53.4 | 53.4 | 53.4 | 53.4 | 53.4 | 53.4 | 53.4 | 53.4 | 53.4 | 53.4 | 53.4 | 53.4 | 53.4 | 53.4 | 53.4 | 63.9 | 63.9v |
| L4 | 25.4 | 25.4 | 25.4 | 25.4 | 25.4 | 25.4 | 25.4 | 25.4 | 25.4 | 25.4 | 25.4 | 25.4 | 25.4 | 25.4 | 25.4 | 25.4 | 28.0 | 28.0 |
| da | 105.0 | 105.0 | 108.0 | 108.0 | 113.0 | 123.0 | 123.0 | 133.0 | 138.0 | 138.0 | 148.0 | 148.0 | 148.0 | 157.0 | 163.0 | 178.0 | 190.0 | 195.0 |
| a1 | 62.0 | 67.0 | 70.0 | 70.0 | 72.0 | 75.0 | 77.0 | 80.0 | 82.0 | 85.0 | 87.0 | 97.0 | 92.0 | 102.0 | 109.3 | 118.3 | 129.0 | 135.0 |
| s | 13.2 | 13.2 | 13.2 | 13.2 | 13.2 | 13.2 | 14.2 | 14.2 | 14.2 | 14.2 | 14.2 | 18.0 | 18.0 | 18.0 | 18.0 | 18.0 | 18.0 | 18.0 |

Remarks: imported seal, specially designed cartridge seal for plotting and customization subject to your sample and drawing.
ADD.: No. 5, Yunkai Road, Huangpu District, Guangzhou, China.
TEL.: +86-020-36158139, +86-020-36158280

LP 318



主要技术参数

介质: 化工、食品、石油、制药、造纸、纸浆和污水处理
温度: ≤ 205°C
压力: ≤ 2.5MPa
转速: ≤ 20m/s

材料:
静环: Carbon/Sic/Ssic/TC
动环: Sic/Ssic/TC
辅助密封: Viton/EPDM/Chemraz/Kalrez/Aflas, etc.
弹簧及金属件: 不锈钢 / 哈氏合金

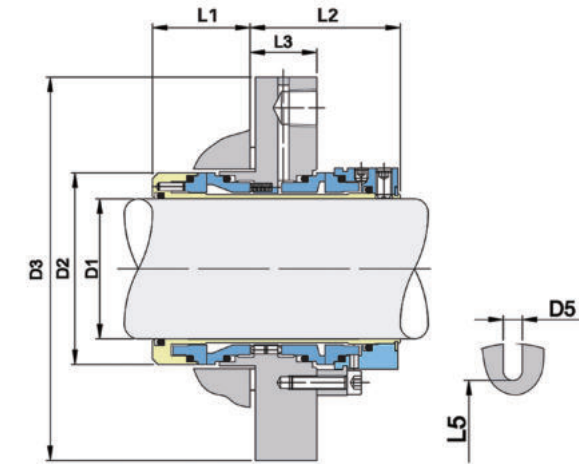
Working Conditions

Mediums: Chemical, Food, Oil, Petroleum, Pharmaceuticals
Paper and pulp, Sewage treatment
Temperature: ≤ 205°C
Pressure: ≤ 2.5MPa
Speed: ≤ 20m/s

Materials:
Stationary Ring: Carbon/Sic/Ssic/TC
Rotary Ring: Sic/Ssic/TC
Secondary Seal: Viton/EPDM/Chemraz/Kalrez/Aflas, etc.
Spring and Metal Part: Stainless Steel/Hast C

| D1(mm) | 25 | 28 | 30 | 35 | 38 | 40 | 45 | 48 | 50 | 55 | 60 | 65 | 70 | 75 | 80 | 85 | 90 | 95 | 100 | 110 | 120 | 130 | 140 | 150 | 160 |
|------------|-----|-----|-----|-----|-----|-----|-----|-----|-----|-----|-----|-----|-----|-----|-----|-----|-----|-----|-----|-----|-----|-----|-----|-----|-----|
| A-Max. | 102 | 105 | 106 | 106 | 114 | 114 | 127 | 133 | 133 | 146 | 165 | 178 | 178 | 191 | 191 | 201 | 215 | 215 | 229 | 241 | 254 | 282 | 295 | 295 | 295 |
| B-Min. | 41 | 44 | 46 | 51 | 56 | 58 | 63 | 67 | 70 | 75 | 81 | 86 | 92 | 102 | 106 | 111 | 117 | 122 | 127 | 137 | 147 | 159 | 170 | 193 | 203 |
| B-Max. | 46 | 49 | 54 | 59 | 62 | 62 | 69 | 70 | 72 | 78 | 84 | 102 | 104 | 112 | 115 | 120 | 130 | 135 | 138 | 176 | 184 | 195 | 215 | 225 | 225 |
| C-Min. | 31 | 31 | 31 | 31 | 35 | 35 | 35 | 33 | 33 | 34 | 34 | 34 | 35 | 37 | 37 | 37 | 37 | 37 | 37 | 36 | 36 | 36 | 43 | 50 | 50 |
| E | 33 | 33 | 33 | 33 | 35 | 35 | 35 | 37 | 37 | 38 | 38 | 38 | 38 | 49 | 49 | 49 | 49 | 49 | 49 | 53 | 53 | 53 | 73 | 80 | 80 |
| F-Min. M8 | 66 | 69 | 72 | 77 | 82 | 82 | 88 | 91 | 91 | 98 | 105 | 121 | 125 | 135 | 135 | 145 | 155 | 155 | 165 | 188 | 196 | 207 | 224 | 234 | 234 |
| F-Min. M10 | 68 | 71 | 74 | 79 | 84 | 84 | 90 | 93 | 93 | 100 | 107 | 123 | 127 | 137 | 137 | 147 | 157 | 157 | 167 | 190 | 198 | 209 | 226 | 236 | 236 |
| F-Min. M12 | 70 | 73 | 76 | 81 | 86 | 86 | 92 | 95 | 95 | 102 | 109 | 125 | 129 | 139 | 139 | 149 | 159 | 159 | 169 | 192 | 200 | 211 | 228 | 238 | 238 |
| F-Min. M16 | - | - | - | - | - | - | - | - | - | - | - | - | - | - | - | - | - | - | - | 196 | 204 | 213 | 232 | 242 | 242 |

LP 320



主要技术参数

介质: 化工、食品、石油、制药、造纸、纸浆和污水处理
温度: 根据密封圈材质而定
压力: ≤ 2.8MPa
转速: ≤ 35m/s

材料:
静环: Carbon/Sic/Ssic/TC
动环: Sic/Ssic/TC
辅助密封: Viton/EPDM/Chemraz/Kalrez/Aflas, etc.
弹簧及金属件: 不锈钢 / 哈氏合金

| D1(mm) | D2 | D3 | D5 | L1 | L2 | L3 | L5 |
|--------|------|-----|------|----|----|----|-----|
| 24 | 44.5 | 104 | 12.5 | 35 | 54 | 24 | 62 |
| 25 | 44.5 | 104 | 12.5 | 35 | 52 | 24 | 62 |
| 28 | 47.5 | 104 | 12.5 | 35 | 54 | 24 | 62 |
| 30 | 49.5 | 104 | 12.5 | 35 | 52 | 24 | 67 |
| 32 | 51.5 | 104 | 12.5 | 35 | 54 | 24 | 67 |
| 33 | 51.5 | 104 | 12.5 | 35 | 52 | 24 | 67 |
| 35 | 54.5 | 110 | 12.5 | 35 | 54 | 24 | 70 |
| 38 | 57.5 | 125 | 14.7 | 35 | 52 | 24 | 75 |
| 40 | 59.5 | 125 | 14.7 | 35 | 54 | 24 | 75 |
| 42 | 61.5 | 133 | 14.7 | 35 | 52 | 24 | 80 |
| 43 | 62.5 | 133 | 14.7 | 35 | 54 | 24 | 80 |
| 45 | 64.5 | 140 | 14.7 | 35 | 52 | 24 | 82 |
| 48 | 67.5 | 140 | 14.7 | 35 | 54 | 24 | 82 |
| 50 | 69.5 | 140 | 14.7 | 35 | 52 | 24 | 87 |
| 53 | 72.5 | 150 | 17.5 | 35 | 54 | 24 | 92 |
| 55 | 74.5 | 150 | 17.5 | 35 | 52 | 24 | 92 |
| 60 | 79.5 | 160 | 17.5 | 35 | 54 | 24 | 100 |
| 65 | 84.5 | 165 | 17.5 | 35 | 52 | 24 | 105 |
| 70 | 89.5 | 180 | 17.5 | 35 | 52 | 24 | 120 |
| 75 | 102 | 190 | 17.5 | 39 | 58 | 26 | 125 |
| 80 | 107 | 190 | 17.5 | 39 | 58 | 26 | 130 |
| 85 | 112 | 220 | 21.5 | 39 | 58 | 26 | 135 |
| 90 | 117 | 220 | 21.5 | 39 | 58 | 26 | 140 |
| 95 | 122 | 220 | 21.5 | 39 | 58 | 26 | 145 |
| 100 | 127 | 220 | 21.5 | 39 | 58 | 26 | 150 |

Working Conditions

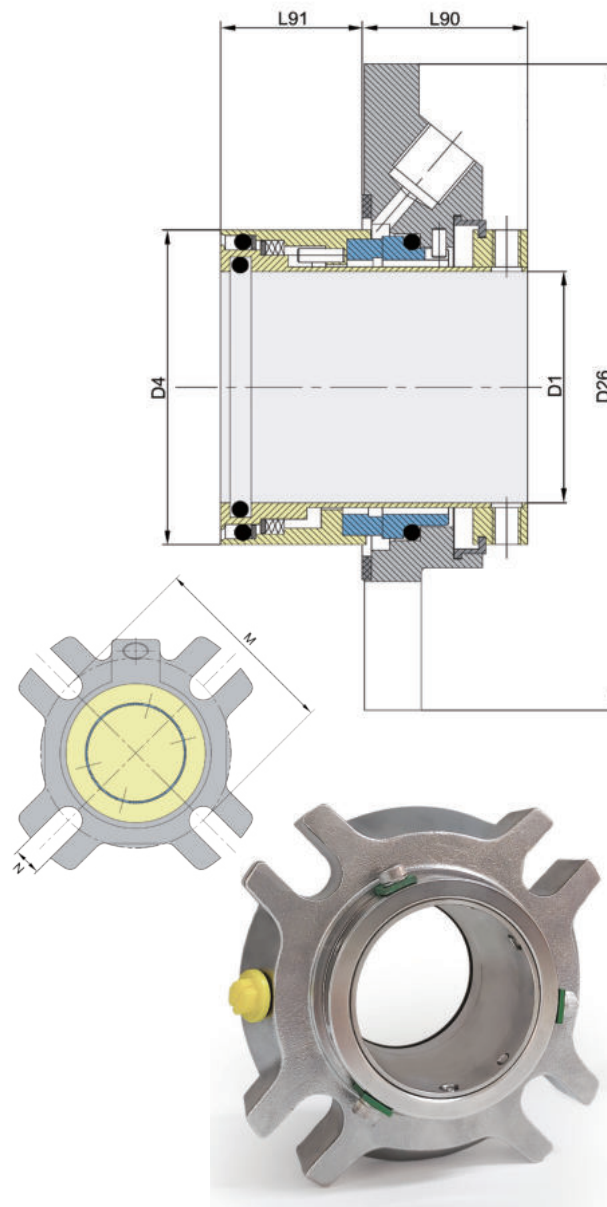
Mediums: Chemical, Food, Oil, Petroleum, Pharmaceuticals
Paper and pulp, Sewage treatment
Temperature: Elastomer dependent
Pressure: ≤ 2.8MPa
Speed: ≤ 35m/s

Materials:
Stationary Ring: Carbon/Sic/Ssic/TC
Rotary Ring: Sic/Ssic/TC
Secondary Seal: Viton/EPDM/Chemraz/Kalrez/Aflas, etc.
Spring and Metal Part: Stainless Steel/Hast C

| D1(inch) | D2 | D3 | D5 | L1 | L2 | L3 | L5 |
|----------|-------|-------|-------|-------|-------|-------|-------|
| 1.000 | 1.752 | 4.094 | 0.492 | 1.378 | 2.126 | 0.984 | 2.441 |
| 1.125 | 1.870 | 4.094 | 0.492 | 1.378 | 2.126 | 0.984 | 2.441 |
| 1.250 | 2.027 | 4.094 | 0.492 | 1.378 | 2.126 | 0.984 | 2.638 |
| 1.375 | 2.146 | 4.331 | 0.492 | 1.378 | 2.126 | 0.984 | 2.756 |
| 1.500 | 2.264 | 4.921 | 0.579 | 1.378 | 2.126 | 0.984 | 2.953 |
| 1.625 | 2.421 | 5.236 | 0.579 | 1.378 | 2.126 | 0.984 | 3.150 |
| 1.750 | 2.539 | 5.512 | 0.579 | 1.378 | 2.126 | 0.984 | 3.228 |
| 1.875 | 2.657 | 5.512 | 0.579 | 1.378 | 2.126 | 0.984 | 3.228 |
| 2.000 | 2.736 | 5.906 | 0.579 | 1.378 | 2.126 | 0.984 | 3.425 |
| 2.125 | 2.854 | 6.102 | 0.689 | 1.378 | 2.126 | 0.984 | 3.622 |
| 2.250 | 3.051 | 6.299 | 0.689 | 1.378 | 2.126 | 0.984 | 3.937 |
| 2.375 | 3.130 | 6.469 | 0.689 | 1.378 | 2.126 | 0.984 | 3.937 |
| 2.500 | 3.248 | 6.693 | 0.689 | 1.378 | 2.126 | 0.984 | 4.055 |
| 2.625 | 3.445 | 7.067 | 0.689 | 1.378 | 2.126 | 0.984 | 4.724 |
| 2.750 | 3.523 | 7.480 | 0.689 | 1.378 | 2.126 | 0.984 | 4.724 |
| 2.875 | 3.937 | 7.480 | 0.689 | 1.535 | 2.283 | 1.181 | 4.843 |
| 3.000 | 4.016 | 7.480 | 0.689 | 1.535 | 2.283 | 1.181 | 4.921 |
| 3.125 | 4.213 | 8.661 | 0.689 | 1.535 | 2.283 | 1.181 | 5.118 |
| 3.250 | 4.331 | 8.661 | 0.846 | 1.535 | 2.283 | 1.181 | 5.236 |
| 3.375 | 4.410 | 8.661 | 0.846 | 1.535 | 2.283 | 1.181 | 5.315 |
| 3.500 | 4.607 | 8.661 | 0.846 | 1.535 | 2.283 | 1.181 | 5.512 |
| 3.625 | 4.685 | 8.661 | 0.846 | 1.535 | 2.283 | 1.181 | 5.591 |
| 3.750 | 4.804 | 8.661 | 0.846 | 1.535 | 2.283 | 1.181 | 5.709 |
| 3.875 | 5.000 | 8.661 | 0.846 | 1.535 | 2.283 | 1.181 | 5.906 |
| 4.000 | 5.000 | 8.661 | 0.846 | 1.535 | 2.283 | 1.181 | 5.906 |

Remarks: imported seal, specially designed cartridge seal for plotting and customization subject to your sample and drawing.
ADD.: No. 5, Yunkai Road, Huangpu District, Guangzhou, China.
TEL.: +86-020-36158139, +86-020-36158280

LP 4610



主要技术参数

介质: 化工、食品、石油、制药、造纸、纸浆和污水处理
温度: $\leq 205^{\circ}\text{C}$
压力: $\leq 2.5\text{MPa}$
转速: $\leq 20\text{m/s}$

材料:

静环: Carbon/Sic/Ssic/TC

动环: Sic/Ssic/TC

辅助密封: Viton/EPDM/Chemraz/Kalrez/Aflas, etc.

弹簧及金属件: 不锈钢 / 哈氏合金

| D1(mm) | D4 Min. | D4 Max. | D26 | L90 | L91 | M | N |
|--------|---------|---------|-------|------|------|------|-------|
| 24 | 40 | 49.2 | 104.8 | 37.5 | 32 | 11.1 | 66.7 |
| 25 | 41 | 49.2 | 104.8 | 37.5 | 32 | 11.1 | 66.7 |
| 28 | 44 | 52.4 | 108 | 37.5 | 32 | 11.1 | 69.9 |
| 30 | 46 | 55.6 | 111 | 37.5 | 32 | 11.1 | 73 |
| 32 | 47.6 | 55.6 | 111 | 37.5 | 32 | 11.1 | 73 |
| 33 | 49 | 58.7 | 114.3 | 37.5 | 32 | 11.1 | 77.8 |
| 35 | 50.8 | 58.7 | 114.3 | 37.5 | 32 | 11.1 | 77.8 |
| 38 | 57.15 | 63.5 | 127 | 38.5 | 33 | 14.3 | 87.3 |
| 40 | 60 | 63.5 | 127 | 38.5 | 33 | 14.3 | 87.3 |
| 43 | 63 | 66.7 | 133.4 | 38.5 | 33 | 14.3 | 90.5 |
| 45 | 63.5 | 66.7 | 133.4 | 38.5 | 33 | 14.3 | 90.5 |
| 48 | 66.7 | 76.2 | 139.7 | 38.5 | 33 | 14.3 | 98.4 |
| 50 | 69.85 | 76.2 | 139.7 | 38.5 | 33 | 14.3 | 98.4 |
| 53 | 73 | 84.1 | 146 | 38.5 | 33 | 17.5 | 111.1 |
| 55 | 73 | 84.1 | 146 | 38.5 | 33 | 17.5 | 111.1 |
| 58 | 79.4 | 90.5 | 152.4 | 38.5 | 33 | 17.5 | 117.5 |
| 60 | 79.4 | 90.5 | 152.4 | 38.5 | 33 | 17.5 | 117.5 |
| 63 | 82.6 | 98.4 | 158.8 | 38.5 | 36 | 17.5 | 123.8 |
| 65 | 88.9 | 98.4 | 158.8 | 38.5 | 36 | 17.5 | 123.8 |
| 70 | 95 | 98.4 | 158.8 | 38.5 | 36 | 17.5 | 123.8 |
| 75 | 101.6 | 114.3 | 206 | 46 | 42.5 | 20.6 | 145 |
| 80 | 108 | 120.6 | 206 | 46 | 42.5 | 20.6 | 151 |
| 85 | 111 | 123.8 | 206 | 46 | 42.5 | 20.6 | 154 |
| 90 | 117.5 | 130 | 216 | 46 | 42.5 | 20.6 | 160 |
| 95 | 120.7 | 133.4 | 246 | 46 | 42.5 | 20.6 | 164 |
| 100 | 127 | 140 | 246 | 46 | 42.5 | 20.6 | 171 |
| 105 | 133.4 | 150 | 246 | 62 | 44 | 20.6 | 181 |
| 110 | 139.7 | 155 | 246 | 62 | 44 | 20.6 | 188 |
| 115 | 139.7 | 155 | 246 | 62 | 44 | 20.6 | 188 |
| 120 | 146.1 | 162 | 266 | 62 | 44 | 20.6 | 194 |
| 125 | 160 | 176 | 266 | 62 | 44 | 20.6 | 210 |
| 130 | 160 | 176 | 266 | 62 | 44 | 20.6 | 210 |
| 135 | 174 | 190 | 296 | 62 | 44 | 23.8 | 226 |
| 140 | 174 | 190 | 296 | 62 | 44 | 23.8 | 226 |

Working Conditions

Mediums: Chemical, Food, Oil, Petroleum, Pharmaceuticals
Paper and pulp, Sewage treatment
Temperature: $\leq 205^{\circ}\text{C}$
Pressure: $\leq 2.5\text{MPa}$
Speed: $\leq 20\text{m/s}$

Materials:

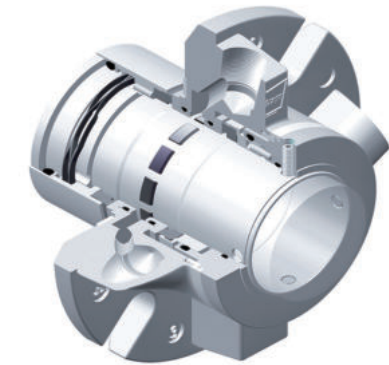
Stationary Ring: Carbon/Sic/Ssic/TC

Rotary Ring: Sic/Ssic/TC

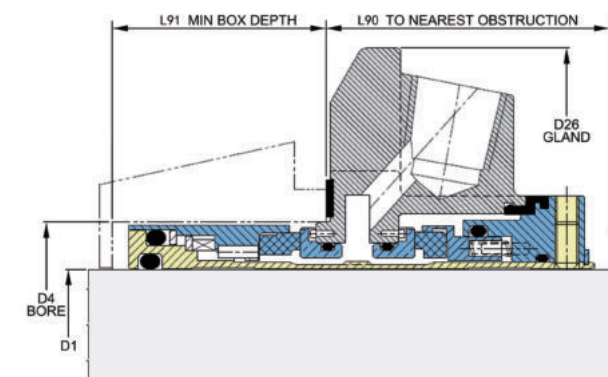
Secondary Seal: Viton/EPDM/Chemraz/Kalrez/Aflas, etc.

Spring and Metal Part: Stainless Steel/Hast C

LP 4620



| D1(mm) | D4 | | D26 | L90 | L91 |
|--------|--------|--------|--------|-------|-------|
| | Min. | Max. | | | |
| 24 | 41.3 | 48 | 101.6 | 50.8 | 41.5 |
| 25 | 41.3 | 48 | 101.6 | 50.8 | 41.5 |
| 28 | 44.5 | 51.2 | 104.8 | 54.0 | 40.7 |
| 30 | 46.0 | 58.3 | 108.0 | 54.0 | 40.7 |
| 32 | 47.6 | 58.3 | 108.0 | 54.0 | 40.7 |
| 33 | 50.8 | 61.5 | 111.1 | 54.0 | 40.7 |
| 35 | 50.8 | 61.5 | 111.1 | 54.0 | 40.7 |
| 38 | 57.2 | 68.1 | 123.8 | 55.5 | 42.7 |
| 40 | 60.3 | 71.4 | 127.0 | 55.5 | 42.7 |
| 43 | 63.5 | 74.1 | 133.4 | 55.5 | 42.7 |
| 45 | 63.5 | 74.1 | 133.4 | 55.5 | 42.7 |
| 48 | 66.7 | 74.1 | 133.4 | 55.5 | 42.7 |
| 50 | 69.9 | 76.6 | 139.7 | 139.7 | 43.5 |
| 53 | 73 | 85.3 | 85.3 | 148.8 | 43.5 |
| 55 | 73.0 | 85.3 | 148.8 | 60.3 | 43.5 |
| 58 | 79.4 | 91.7 | 165.1 | 64.2 | 43.5 |
| 60 | 79.4 | 91.7 | 165.1 | 64.2 | 43.5 |
| 63 | 85.7 | 98.8 | 171.5 | 66.7 | 43.3 |
| 65 | 85.7 | 98.8 | 171.5 | 66.7 | 43.3 |
| 70 | 93.6 | 103.2 | 171.5 | 65.1 | 43.9 |
| 75 | 101.60 | 113.51 | 196.85 | 66.68 | 57.15 |
| 80 | 104.78 | 116.84 | 188.9 | 66.93 | 57.15 |
| 85 | 111.13 | 123.19 | 206.38 | 68.25 | 57.15 |
| 90 | 117.48 | 129.54 | 212.73 | 68.25 | 57.15 |
| 95 | 119.99 | 132.05 | 222.25 | 68.25 | 57.15 |
| 100 | 127.00 | 139.70 | 228.60 | 68.25 | 57.15 |
| 105 | 130.18 | 142.88 | 228.60 | 68.25 | 57.15 |
| 110 | 139.70 | 152.40 | 241.30 | 68.25 | 66.68 |
| 115 | 139.70 | 152.40 | 241.30 | 68.25 | 66.68 |
| 120 | 146.05 | 160.35 | 263.53 | 68.25 | 66.68 |
| 125 | 161.29 | 184.40 | 304.80 | 80.47 | 65.99 |
| 130 | 167.64 | 190.75 | 311.15 | 80.47 | 65.99 |
| 135 | 173.99 | 203.20 | 322.25 | 80.47 | 65.99 |
| 140 | 173.99 | 203.20 | 322.25 | 80.47 | 65.99 |



主要技术参数

介质: 化工、食品、石油、制药、造纸、纸浆和污水处理
温度: -30°C to $+205^{\circ}\text{C}$
压力: $\leq 2.8\text{MPa}$
转速: $\leq 25\text{m/s}$

材料:

静环: Carbon/Sic/Ssic/TC

动环: Sic/Ssic/TC

辅助密封: Viton/EPDM/Chemraz/Kalrez/Aflas, etc.

弹簧及金属件: 不锈钢 / 哈氏合金

Working Conditions

Mediums: Chemical, Food, Oil, Petroleum, Pharmaceuticals
Paper and pulp, Sewage treatment
Temperature: -30°C to $+205^{\circ}\text{C}$
Pressure: $\leq 2.8\text{MPa}$
Speed: $\leq 25\text{m/s}$

Materials:

Stationary Ring: Carbon/Sic/Ssic/TC

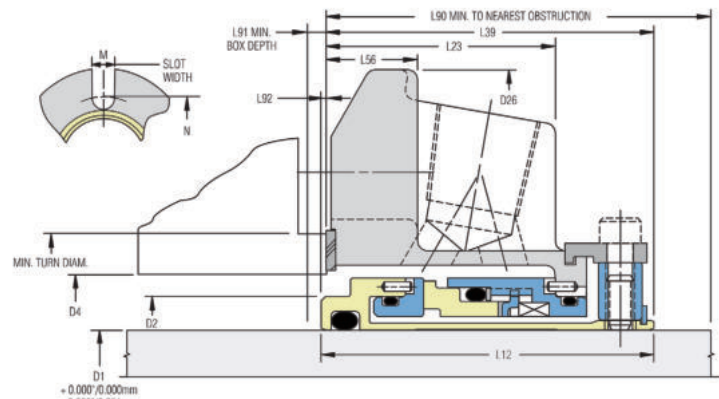
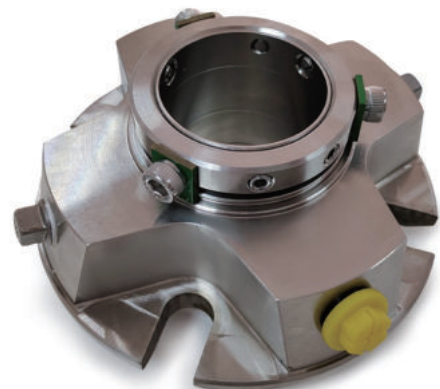
Rotary Ring: Sic/Ssic/TC

Secondary Seal: Viton/EPDM/Chemraz/Kalrez/Aflas, etc.

Spring and Metal Part: Stainless Steel/Hast C

Remarks: imported seal, specially designed cartridge seal for plotting and customization subject to your sample and drawing.
ADD.: No. 5, Yunkai Road, Huangpu District, Guangzhou, China.
TEL.: +86-020-36158139, +86-020-36158280

LP 5610



主要技术参数

介质: 化工、食品、石油、制药、造纸、纸浆和污水处理
温度: -30°C to +205°C
压力: ≤ 2.1MPa
转速: ≤ 25m/s

材料:
静环: Carbon/Sic/Ssic/TC
动环: Sic/Ssic/TC
辅助密封: Viton/EPDM/Chemraz/Kalrez/Aflas, etc.
弹簧及金属件: 不锈钢 / 哈氏合金

Working Conditions

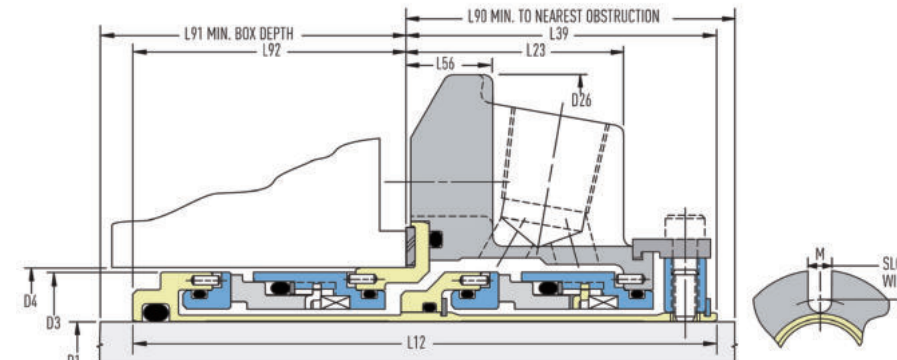
Mediums: Chemical, Food, Oil, Petroleum, Pharmaceuticals
Paper and pulp, Sewage treatment
Temperature: -30°C to +205°C
Pressure: ≤ 2.1MPa
Speed: ≤ 25m/s

Materials:
Stationary Ring: Carbon/Sic/Ssic/TC
Rotary Ring: Sic/Ssic/TC
Secondary Seal: Viton/EPDM/Chemraz/Kalrez/Aflas, etc.
Spring and Metal Part: Stainless Steel/Hast C

| D1(mm) | D2 | D4 | | D26 | L12 | L23 | L39 | L56 | L90 | L91 | L92 | M | N |
|--------|-------|-------|-------|-------|------|------|------|------|------|-----|-----|------|-------|
| | | Min. | Max. | | | | | | | | | | |
| 24 | 34.9 | 36.7 | 48.0 | 101.6 | 50.5 | 34.4 | 49.6 | 13.5 | 50.8 | 4.0 | 0.9 | 13.3 | 71.2 |
| 25 | 34.9 | 36.7 | 48.0 | 101.6 | 50.5 | 34.4 | 49.6 | 13.5 | 50.8 | 4.0 | 0.9 | 13.3 | 71.2 |
| 28 | 38.1 | * | 51.2 | 104.8 | 52.4 | 36.7 | 52.4 | 13.5 | 54.0 | 3.2 | * | 13.3 | 74.5 |
| 30 | 40.0 | * | 56.5 | 108.0 | 52.4 | 36.7 | 52.4 | 13.5 | 54.0 | 3.2 | * | 13.3 | 79.9 |
| 32 | 41.3 | * | 58.3 | 108.0 | 52.4 | 36.7 | 52.4 | 13.5 | 54.0 | 3.2 | * | 13.3 | 81.6 |
| 33 | 44.5 | * | 61.5 | 111.1 | 52.4 | 36.7 | 52.4 | 13.5 | 54.0 | 3.2 | * | 13.3 | 84.8 |
| 35 | 44.5 | * | 61.5 | 111.1 | 52.4 | 36.7 | 52.4 | 13.5 | 54.0 | 3.2 | * | 13.3 | 84.8 |
| 38 | 49.2 | 51.0 | 68.1 | 123.8 | 54.8 | 37.8 | 54.0 | 15.1 | 55.5 | 4.0 | 0.8 | 13.3 | 91.4 |
| 40 | 52.4 | 54.2 | 71.4 | 127.0 | 54.8 | 37.8 | 54.0 | 15.1 | 55.5 | 4.0 | 0.8 | 14.3 | 95.7 |
| 43 | 55.1 | 56.9 | 74.1 | 133.4 | 54.8 | 37.8 | 54.0 | 15.1 | 55.5 | 4.0 | 0.8 | 14.3 | 98.4 |
| 45 | 55.1 | 56.9 | 74.1 | 133.4 | 54.8 | 37.8 | 54.0 | 15.1 | 55.5 | 4.0 | 0.8 | 14.3 | 98.4 |
| 48 | 58.7 | 60.5 | 74.1 | 133.4 | 54.8 | 37.8 | 54.0 | 15.1 | 55.5 | 4.0 | 0.8 | 14.3 | 98.4 |
| 50 | 61.9 | 63.7 | 76.6 | 139.7 | 60.3 | 40.7 | 58.7 | 27.0 | 60.3 | 4.7 | 1.6 | 14.3 | 101.6 |
| 53 | 65.1 | 66.9 | 85.3 | 148.8 | 60.3 | 40.7 | 58.7 | 15.1 | 60.3 | 4.7 | 1.6 | 17.4 | 113.5 |
| 55 | 66.7 | 75.0 | 85.3 | 148.8 | 60.3 | 40.7 | 58.7 | 15.1 | 60.3 | 4.7 | 1.6 | 17.4 | 113.5 |
| 58 | 68.2 | 70.0 | 88.5 | 165.4 | 60.3 | 40.7 | 58.7 | 15.1 | 60.3 | 4.7 | 1.6 | 17.4 | 116.0 |
| 60 | 71.4 | 73.2 | 91.7 | 165.1 | 63.1 | 43.6 | 62.6 | 15.9 | 64.2 | 3.6 | 1.6 | 17.4 | 119.9 |
| 63 | 77.8 | * | 98.8 | 171.5 | 63.1 | 43.6 | 65.1 | 15.9 | 66.7 | 3.2 | 0.5 | 17.4 | 127.0 |
| 65 | 77.8 | * | 98.8 | 171.5 | 63.1 | 43.6 | 65.1 | 15.9 | 66.7 | 3.2 | * | 17.4 | 127.0 |
| 68 | 84.1 | * | 103.2 | 171.5 | 63.5 | 41.3 | 63.5 | 15.9 | 65.1 | 3.2 | * | 17.4 | 131.3 |
| 70 | 84.1 | * | 103.2 | 171.5 | 63.5 | 41.3 | 63.5 | 15.9 | 65.1 | 3.2 | * | 17.4 | 131.3 |
| 75 | 92.1 | * | 113.5 | 196.9 | 63.5 | 41.3 | 65.1 | 17.4 | 66.7 | 3.2 | * | 20.6 | 145.3 |
| 80 | 95.3 | 97.9 | 116.8 | 188.9 | 65.1 | 40.5 | 63.8 | ** | 66.9 | 4.5 | 1.3 | 20.6 | 148.5 |
| 85 | 101.3 | 104.8 | 123.2 | 206.4 | 65.1 | 40.5 | 65.1 | ** | 68.3 | 3.2 | * | 20.6 | 154.8 |
| 90 | 107.1 | 110.3 | 129.5 | 212.7 | 65.1 | 40.5 | 65.1 | ** | 68.3 | 3.2 | * | 17.4 | 158.6 |
| 95 | 110.3 | 113.5 | 132.1 | 222.3 | 65.1 | 40.5 | 65.1 | ** | 68.3 | 3.2 | * | 17.4 | 172.0 |
| 100 | 116.7 | 119.8 | 139.7 | 228.6 | 65.1 | 40.5 | 65.1 | ** | 68.3 | 3.2 | * | 20.6 | 171.7 |
| 105 | 119.8 | 123.0 | 142.9 | 228.6 | 65.1 | 40.5 | 65.1 | ** | 68.3 | 3.2 | * | 20.6 | 174.9 |
| 110 | 129.4 | 132.5 | 152.4 | 241.3 | 65.1 | 40.5 | 65.1 | ** | 68.3 | 3.2 | * | 20.6 | 184.4 |
| 115 | 129.4 | 132.5 | 152.4 | 241.3 | 65.1 | 40.5 | 65.1 | ** | 68.3 | 3.2 | * | 20.6 | 184.4 |
| 120 | 135.7 | 138.9 | 160.4 | 263.5 | 65.1 | 40.5 | 65.1 | ** | 68.3 | 3.2 | * | 20.6 | 192.4 |
| 125 | 148.4 | 151.6 | 184.4 | 304.8 | 75.0 | 44.4 | 77.3 | ** | 80.5 | 3.2 | * | 20.6 | 254.0 |
| 130 | 154.8 | 157.9 | 190.8 | 311.2 | 75.0 | 44.4 | 77.3 | ** | 80.5 | 3.2 | * | 20.6 | 260.4 |
| 135 | 161.1 | 164.3 | 203.2 | 322.3 | 75.0 | 44.4 | 77.3 | ** | 80.5 | 3.2 | * | 23.8 | 266.7 |
| 140 | 161.1 | 164.3 | 203.2 | 322.3 | 75.0 | 44.4 | 77.3 | ** | 80.5 | 3.2 | * | 23.8 | 266.7 |

*Not applicable. Completely outside mounted.
**L56 not applicable. Refer to L23 for sizes over 75mm.

LP 5620



主要技术参数

介质: 化工、食品、石油、制药、造纸、纸浆和污水处理
温度: -30°C to +205°C
压力: ≤ 2.1MPa
转速: ≤ 25m/s

材料:
静环: Carbon/Sic/Ssic/TC
动环: Sic/Ssic/TC
辅助密封: Viton/EPDM/Chemraz/Kalrez/Aflas, etc.
弹簧及金属件: 不锈钢 / 哈氏合金

Working Conditions

Mediums: Chemical, Food, Oil, Petroleum, Pharmaceuticals
Paper and pulp, Sewage treatment
Temperature: -30°C to +205°C
Pressure: ≤ 2.1MPa
Speed: ≤ 25m/s

Materials:
Stationary Ring: Carbon/Sic/Ssic/TC
Rotary Ring: Sic/Ssic/TC
Secondary Seal: Viton/EPDM/Chemraz/Kalrez/Aflas, etc.
Spring and Metal Part: Stainless Steel/Hast C

| D1(mm) | D3 | D4 | | D26 | L12 | L23 | L39 | L56 | L90 | L91 | L92 | M | N |
|--------|-------|-------|-------|-------|-------|------|------|------|------|------|------|------|-------|
| | | Min. | Max. | | | | | | | | | | |
| 24 | 39.7 | 41.3 | 48.0 | 101.6 | 94.1 | 34.4 | 49.6 | 13.5 | 50.8 | 47.7 | 44.5 | 13.3 | 71.2 |
| 25 | 39.7 | 41.3 | 48.0 | 101.6 | 94.1 | 34.4 | 49.6 | 13.5 | 50.8 | 47.7 | 44.5 | 13.3 | 71.2 |
| 28 | 42.9 | 44.5 | 51.2 | 104.8 | 97.8 | 36.7 | 52.4 | 13.5 | 54.0 | 48.6 | 45.4 | 13.3 | 74.5 |
| 30 | 44.5 | 46.1 | 56.5 | 108.0 | 97.8 | 36.7 | 52.4 | 13.5 | 54.0 | 48.6 | 45.4 | 13.3 | 79.9 |
| 32 | 46.0 | 47.6 | 58.3 | 108.0 | 97.8 | 36.7 | 52.4 | 13.5 | 54.0 | 48.6 | 45.4 | 13.3 | 81.6 |
| 33 | 49.3 | 50.8 | 61.5 | 111.1 | 97.8 | 36.7 | 52.4 | 13.5 | 54.0 | 48.6 | 45.4 | 13.3 | 84.8 |
| 35 | 49.3 | 50.8 | 61.5 | 111.1 | 97.8 | 36.7 | 52.4 | 13.5 | 54.0 | 48.6 | 45.4 | 13.3 | 84.8 |
| 38 | 55.5 | 57.2 | 68.1 | 123.8 | 101.5 | 37.8 | 54.0 | 15.1 | 55.5 | 50.7 | 47.5 | 13.3 | 91.4 |
| 40 | 58.7 | 60.3 | 71.4 | 127.0 | 101.5 | 37.8 | 54.0 | 15.1 | 55.5 | 50.7 | 47.5 | 14.3 | 95.7 |
| 43 | 61.1 | 63.0 | 74.1 | 133.4 | 101.5 | 37.8 | 54.0 | 15.1 | 55.5 | 50.7 | 47.5 | 14.3 | 98.4 |
| 45 | 61.1 | 63.0 | 74.1 | 133.4 | 101.5 | 37.8 | 54.0 | 15.1 | 55.5 | 50.7 | 47.5 | 14.3 | 98.4 |
| 48 | 64.7 | 66.7 | 74.1 | 133.4 | 101.5 | 37.8 | 54.0 | 15.1 | 55.5 | 50.7 | 47.5 | 14.3 | 98.4 |
| 50 | 67.9 | 70.0 | 76.6 | 139.7 | 110.6 | 40.7 | 58.7 | 27.0 | 60.3 | 55.0 | 51.9 | 14.3 | 101.6 |
| 53 | 71.1 | 73.0 | 85.3 | 148.8 | 110.6 | 40.7 | 58.7 | 15.1 | 60.3 | 55.0 | 51.9 | 17.4 | 113.5 |
| 55 | 72.9 | 75.0 | 85.3 | 148.8 | 110.6 | 40.7 | 58.7 | 15.1 | 60.3 | 55.0 | 51.9 | 17.4 | 113.5 |
| 58 | 74.2 | 76.2 | 88.5 | 165.1 | 110.6 | 40.7 | 58.7 | 15.1 | 60.3 | 55.0 | 51.9 | 17.4 | 116.0 |
| 60 | 77.4 | 79.4 | 91.7 | 165.1 | 115.4 | 43.6 | 62.6 | 15.9 | 64.2 | 56.0 | 52.8 | 17.4 | 119.9 |
| 63 | 83.8 | 85.7 | 98.8 | 171.5 | 115.4 | 43.6 | 65.1 | 15.9 | 66.7 | 53.5 | 50.3 | 17.4 | 127.0 |
| 65 | 83.8 | 85.7 | 98.8 | 171.5 | 115.4 | 43.6 | 65.1 | 15.9 | 66.7 | 53.5 | 50.3 | 17.4 | 127.0 |
| 68 | 90.2 | 92.1 | 103.2 | 171.5 | 116.7 | 41.3 | 63.5 | 15.9 | 65.1 | 56.4 | 53.2 | 17.4 | 131.3 |
| 70 | 90.2 | 92.1 | 103.2 | 171.5 | 116.7 | 41.3 | 63.5 | 15.9 | 65.1 | 56.4 | 53.2 | 17.4 | 131.3 |
| 75 | 98.0 | 101.6 | 113.5 | 196.9 | 116.7 | 41.3 | 65.1 | 17.4 | 66.7 | 54.8 | 51.6 | 20.6 | 145.3 |
| 80 | 102.2 | 105.0 | 116.8 | 188.9 | 119.0 | 40.5 | 63.8 | * | 66.9 | 58.5 | 55.3 | 20.6 | 148.5 |
| 85 | 107.9 | 111.1 | 123.2 | 206.4 | 119.0 | 40.5 | 65.1 | * | 68.3 | 57.2 | 54.0 | 20.6 | 154.8 |
| 90 | 114.3 | 117.5 | 129.5 | 212.7 | 119.0 | 40.5 | 65.1 | * | 68.3 | 57.2 | 54.0 | 17.5 | 158.6 |
| 95 | 117.5 | 120.0 | 132.1 | 222.3 | 119.0 | 40.5 | 65.1 | * | 68.3 | 57.2 | 54.0 | 17.5 | 172.0 |
| 100 | 123.8 | 127.0 | 139.7 | 228.6 | 119.0 | 40.5 | 65.1 | * | 68.3 | 57.2 | 54.0 | 20.6 | 171.7 |
| 105 | 127.0 | 130.2 | 142.9 | 228.6 | 119.0 | 40.5 | 65.1 | * | 68.3 | 57.2 | 54.0 | 20.6 | 174.9 |
| 110 | 136.5 | 139.7 | 152.4 | 241.3 | 119.0 | 40.5 | 65.1 | * | 68.3 | 57.2 | 54.0 | 20.6 | 184.4 |
| 115 | 136.5 | 139.7 | 152.4 | 241.3 | 119.0 | 40.5 | 65.1 | * | 68.3 | 57.2 | 54.0 | 20.6 | 184.4 |
| 120 | 142.9 | 146.1 | 160.4 | 263.5 | 119.0 | 40.5 | 65.1 | * | 68.3 | 57.2 | 54.0 | 20.6 | 192.4 |
| 125 | 155.6 | 171.7 | 184.4 | 304.8 | 140.1 | 44.4 | 77.3 | * | 80.5 | 66.0 | 62.8 | 20.6 | 254.0 |
| 130 | 161.9 | 178.1 | 190.8 | 311.2 | 140.1 | 44.4 | 77.3 | * | 80.5 | 66.0 | 62.8 | 20.6 | 260.4 |
| 135 | 168.3 | 190.5 | 203.2 | 322.3 | 140.1 | 44.4 | 77.3 | * | 80.5 | 66.0 | 62.8 | 20.8 | 266.7 |
| 140 | 168.3 | 190.5 | 203.2 | 322.3 | 140.1 | 44.4 | 77.3 | * | 80.5 | 66.0 | 62.8 | 20.8 | 266.7 |

*Not applicable. Refer to L23 for sizes over 75mm.



广州市乐浦机械有限公司
Guangzhou Lepu Machinery Co., Ltd.



CONTACTS US

www.lepuseal.com

ADD: No. 5, Yunkai Road, Huangpu District, Guangzhou, China.

TEL: +86-020-36158280, +86-020-36158139

FAX: +86-020-36158281

M. P: +86-13312879119 (岳定财)

E-mail: mark@lepuseal.com; amy@lepuseal.com

SKYPE: lepu-seal

Whatapps: +86-18903009893 (Mr. Mark Ao)