



Shenzhen ITA Touch Technology Co., LTD.

Company Profile

INTERACTIVE

SINCE

2016



We are willing to do more works ...

Customer's benefits
always come first.

www.itatouch.com

Address: Building 123, Minsheng Industrial City, Gongming Town, Guangming District, Shenzhen, China

About Us

Who Are We?

Established in Oct 2016, We focus on high-tech interactive products and the development & design of Interactive Touch Monitor, Interactive Smart Whiteboards, Digital Signage, All In One Computer, Graphic Monitor .. etc. By establishing a scientific management system for production, sales, and technical support, and services.

ITATOUCH Factory products have been granted CE, FCC, ROHS, and ISO certificates and are highly appreciated by customers in more than 30 countries



Company Philosophy

OUR MISSION: Promoting brand marketing, helping customers to achieve business success.

We keep innovating our service and process to meet the diversifying demands of customer. To help our customers stand out from fierce market competition, we consistently do market research, expand team, improve supply chain and service. We aim to share our knowledge by giving the best advise possible.

OUR VISION: To be the world-class solution provider

Strengthening world-class service capability by providing solution for customers with lower price, great service and superior quality, so as to create value.

Building world-class professional service team to bring customers great experience of cooperation and highest satisfaction.

Exploring world-class service mode to promote the development of industry by technology and innovation.

OUR VALUES: Customer First, Teamwork, Integrity, Passion, Dedication.

We are willing to do more works to provide greater service and lower the cost of customers. Customer's benefits always come first. Be positive to work, willing to help, share the responsibility and achievement of our team. We have zero tolerance to dishonest, and we are honest with different stakeholders. Our passion comes from the desire that helping customers to achieve business success. And it motivates us to pay attention to every detail of work and try the best to make it well! We know that it is worth making every effort to achieve better performance.

Company Video Links:

https://youtu.be/xnQQqL_McAE

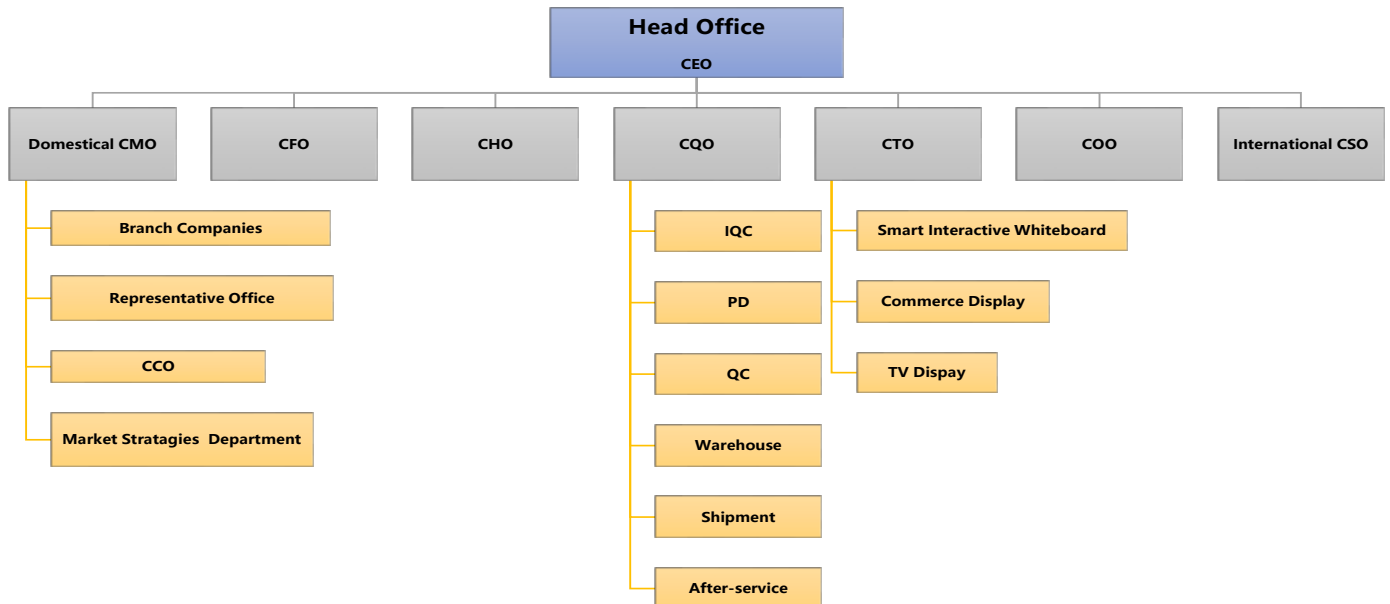
Milestone

10+ Years of Glory

- 2006, ITATOUCH R&D Team established,
- 2016, ITATOUCH factory built-in.
- 2015, The infrared 6-point technology has been developed successfully first ...
- 2016, ITATOUCH was founded in Shenzhen, China
- 2020, More branded customers choose us under the epidemic situation
- 2021, Semi-Auto Production Line starts running, provide more competitive products for our clients

Organization

We have established a good organizational system to service our customers. Foreign and trade in service are set up seperately, and production and managment also. so we can serve our customers faster and better.



Our Team

We Share, We Succeed

Human resource is the most valuable asset of us. We keep bringing in more creative talents, empowering the growth of capability for staff, so as to make our team young, energetic, creative, professional, and efficient. We are committed to making our staffs work and live happily. Happiness comes from understanding, respect, and fighting for one goal.



(Group Tour - partial of our team colleague)

Leading R&D Innovation



Reliability, Quality, and Innovation

The R&D team does well in the development and research. The application of the leading infrared & AI technology to the Interactive Smart WhiteBoard is one of the most important battlegrounds to catch the eyeballs of customers.

Lean Production

Creating Customer Value at Scale with Quality, Traceability and Smart Control

We proudly provide high-quality interactive touch screen manufacturing and service for all your needs.

- * Factory Area: 18,000 square meters
- * Large Capacity: 2000~5000sets/month per different products. Semi-Auto Production Lines
- * On-time delivery: 5~25 days production lead time
- * Quick response: 7x24 hours service

Factory Workshop



Dust-Free Workshop



Semi-Auto Production Line



Finish Product Inspection Lines



Infrared PCB Test & Assemble Line

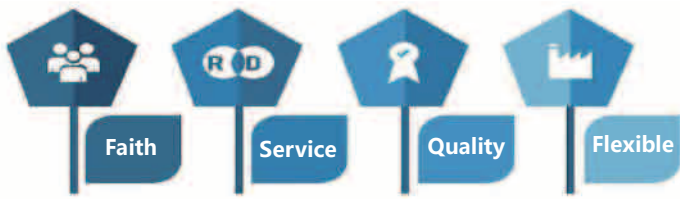


Interactive Whiteboard Production Line



Digital Signage Production Aging

One-Step Solution Service



Full-process Service System

We built a service system. The system would help customers unlock the potential of products and brands to achieve business success!

OEM | ODM | SKD SERVICE

Quality Control

- * Original Panel A Quality
- * 24~48 hours Aging inside High-temperature Room
- * One by One Boot Detection
- * Quality Comply: CE, FCC, ROHS, CB, BIS, ISO Certificate
- * Reasonable price: your pay is really worth it



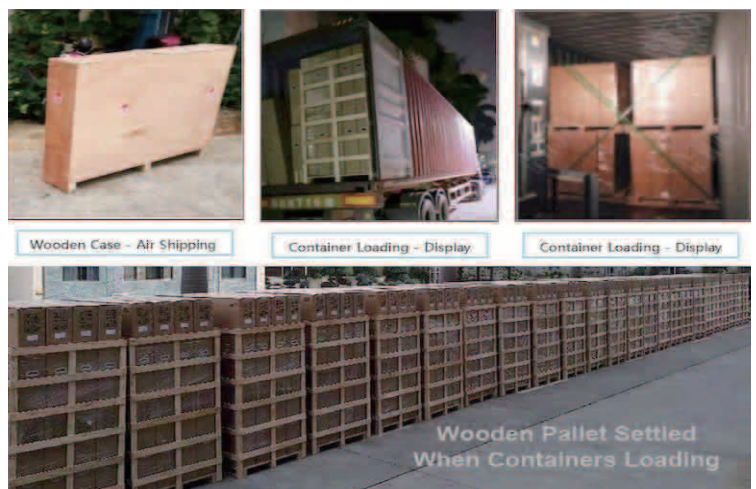
Our QA team formed by professional technicians strictly inspects each interactive touch screen according to the international electric product standard to ensure that the screen panel, application function, and interfaces are working well before packing.

Worry-Free Shipment

We will help to check the transportation price, and arrange the shipment of the goods accordingly to your requirements. To ensure shipment safety, we will settle it with wooden case / pallet.

EXW, FOB, CIF, DDP... terms offer
Drop shipping support

Truly worry-free shipping that is highly rated by 99% of customers



Main Product - Part 1

Interactive Flat Panel

M Series



55", 65", 75", 85"/86", 98" built-in Camera 13MP & 8-Aarry Mic

E / S / KN Series



Infrared Mutli Touch
55", 65", 75", 85", 98", 110"

NE Series



Capacitive Touch Screen

Interactive Whiteboard - connect with PC , Projector to working



All In One Whiteboard (android / PC / Visualizer)



Normal Interactive Whiteboard
82", 85", 96", 102", 106", 120"



Nano Blackboard

Size: 2 x 4m
Infrared multi touch / Capacitive
Touch screen option
Built-in interactive display 65",
75", 85"/ 86"
Android / PC OS, Visualizer

Main Product -Part 2

Digital Signage Display

Floor Stand



32", 43", 50", 55", 65" 75"
With or w/o touch, Android / PC

Wall Mount



21.5" 32", 43", 50", 55", 65" 75"
With or w/o touch, Android / PC

Table Stand



21.5" 32", 43", 50", 55", 65" 75"
With touch screen, Android / PC

AIO All In One PC Monitor

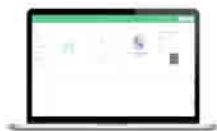


19", 21.5", 23.8", 27"; Android OS / PC Windows OS Intel I3, I5, I7, Capacitive touch / built-in camera option.

Hologram 3D Fan - advertising player



Control Method



Laptop PC



Mobile Phone



50cm, 56cm, 65cm, 75cm, 90cm, 100cm - 4 blades
150cm, 200cm - 8 blades



Transparent Cover, Bracket Option



Splicing 3D Video Wall, Mobile Stand

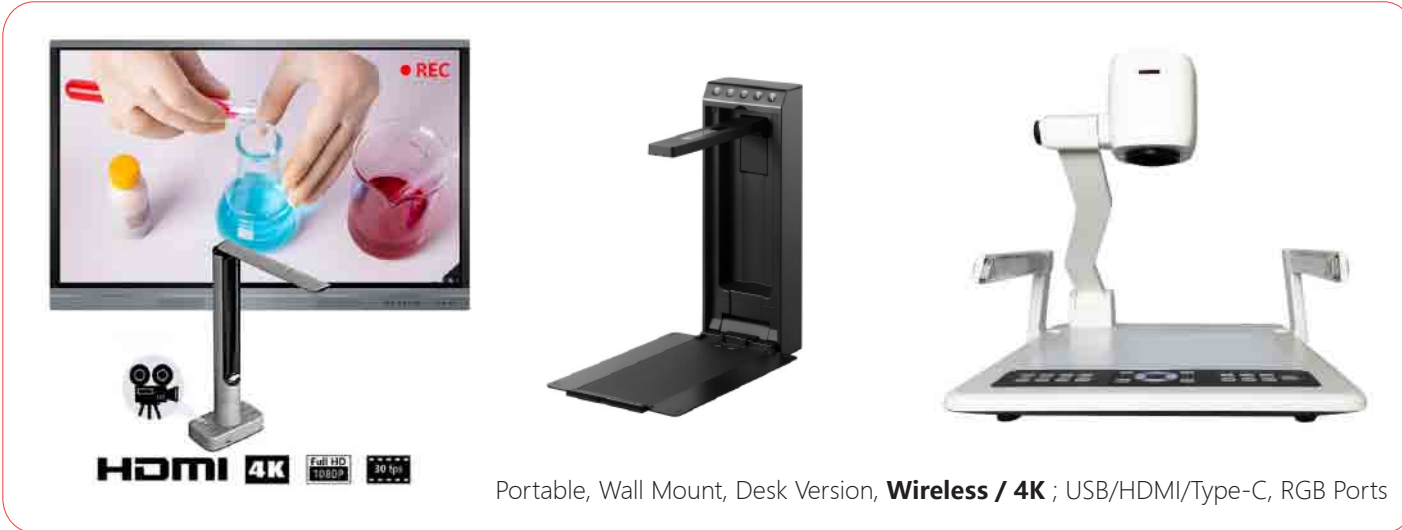
Main Product -Part 3

Graphic Tablet Monitor - 8192 Pressure Levels

For Artist, Designer, Teacher, Students School Classroom



Document Visualizer - for education school conference meeting



Mobile TV Stand - for Interactive Flat Panel Whiteboard



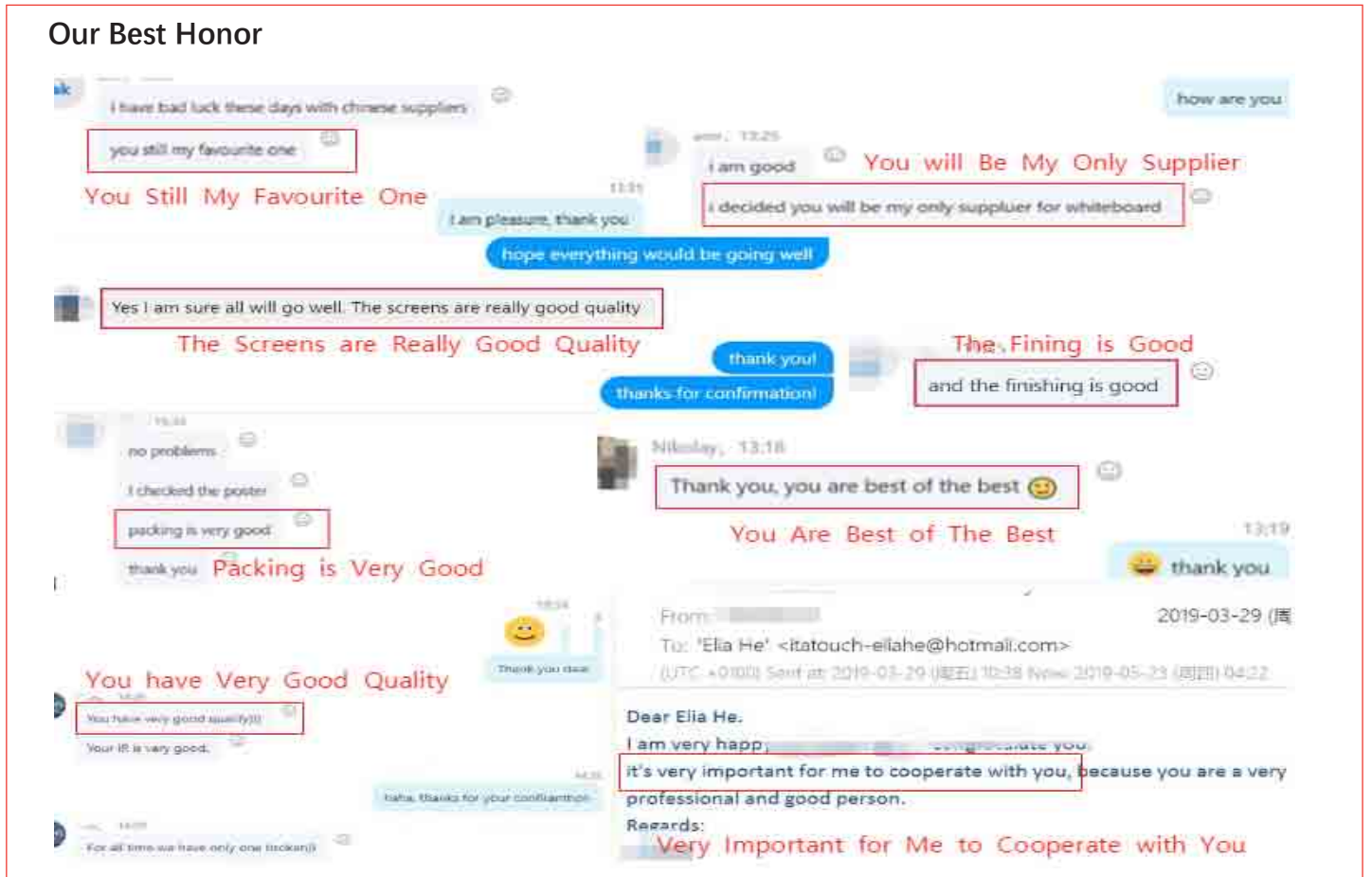
Reviews

Witness with Global Customers

Usually, we will take part in some international exhibitions. We expect to meet with you at the show.



Our Best Honor



Contact Us



Better yet see us in person!

We love customers,so feel free to visit during normal business hours.

Shenzhen ITA Touch Technology Co., Ltd.

Address: Building 123, Minsheng Industrial City, Gongming Town, Guangming District, Shenzhen, China

Website: <https://www.itatouch.com> <https://www.smart-interactiveboard.com>

Tel. +86 755 28281849

Email: info@itatouch.com