

CE CB RoHS



ST29B series LED Street Light

30W~240W

- A. Integrated die-casting process, with seamless design for the back cover shell.
- B. Excellent thermal management and outstanding self-cleaning capability.
- C. High efficient SMD5050 chips and high quality driver, assures long lifetime.
- D. Multiple beam angle optics for options according to various lighting applications.
- E. With movable handle, the installation angle is adjustable from 0-90 °; the lamp housing can be opened manually, and the power is automatically cut off, which is convenient for maintenance.



ST29B-XS



ST29B-S



ST29B-M



ST29B-L



ST29B-XL

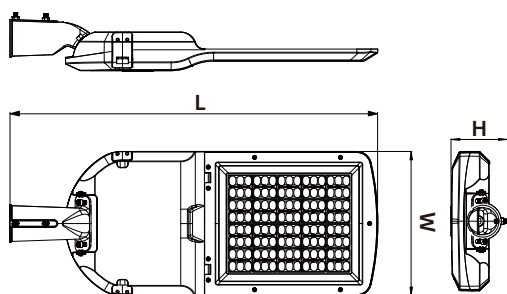
Technical Parameter

Product Number	ST29B-XS			ST29B-WS		ST29B-WM		ST29B-WL		ST29B-XL	
Rated Power	30W	40W	50W	60W	80W	100W	120W	150W	180W	200W	240W
LED's (pcs)	24	24	32	36	36	54	54	72	72	120	120
Input Voltage	100~277V AC										
LED Brand	LUMILEDS, CREE or SOUL										
Chip Type	SMD5050										
Led Light Luminous	≥160~180LM/W										
Driver brand	MW, PHILIPS, INV or SOSEN										
Beam Angle	T1M/T2M/T3M										
Control method	Regular, 0-10V/PMW/DALI dimming, optional										
Sensor	Nema or ZHAGA, optional										
Power factor	>0.95										
Color rendering index	>70 or >80										
Frequency Range	50/60Hz										
Color Temp	2200~6500K										
Lamp body material	AL Body, PC lens and GLASS cover										
Installation diameter	φ40/φ50/φ60mm(default)										
Working Temperature	-40~55°C										
Working Humidity	10~90%										
Life/Warranty	>50,000hrs										
Surge protection	10KV or 20KV										
IP Grade	IP66										
IK Grade	IK09										
Lamp Size	493x174x108mm			562x200x108mm		607x240x108mm		680x260x108mm		766x300x108mm	
Packing size	513x199x163mm			582x225x164mm		626x265x164mm		700x285x164mm		785x325x164mm	
Authentication	CE,CB,ENEC/ENEC+,RoHS										

01

02

Product Size



Model	L	W	H
ST29B-XS	493	174	108
ST29B-WS	562	200	108
ST29B-WM	607	240	108
ST29B-WL	680	260	108
ST29B-XL	766	300	108

Product Display

ST29B will use stunning fixtures visually. The result is a lighting solution that enhances the richness of the lighting installation environment.

Regardless of the configuration, each product in the ST29B series features the same graceful bending fixture, clean casing, and almost seamless installation components.

POLE MOUNTED

- The pole mounted luminaires are available with upswept side-arm and decorative pendant mounting configurations. Contemporary and sleek styling help the ST29B blend into any environment.



Ultra high luminous efficiency technology

- Chip optimization: Equipped with SMD5050 high-efficiency LED chip and nano reflective cup, the maximum light efficiency exceeds 200lm/W (industry average 150lm/W), and power consumption is reduced by 33% under the same brightness.
- Light attenuation control: using high-temperature resistant chips, with a light attenuation of $\leq 5\%$ after 30000 hours, ensuring a brightness maintenance rate of $>80\%$ within a 10-year service life

Horizontal positioning device

- The lamp arm is equipped with a built-in digital level ($\pm 0.5^\circ$ accuracy), combined with laser projection marking function, to ensure the parallelism and spacing consistency of multi lamp group installation.

Optional optical controller

This series of lamps can be equipped with various sensors/light management systems, which can achieve functions such as photoelectric timing, dimming, remote management, and fault alarm.

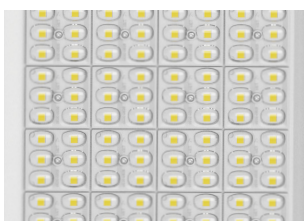


Product Display



BODY

Adopting integrated die-casting technology, the back cover shell has no seam design, which increases the strength by 40% compared to traditional assembled structures, and the impact resistance meets IK08 standards.



Four in one light source

Using four-in-one light source chip to obtain the best uniform illuminance and improve the lighting effect. High luminous efficiency, more energy saving, and cost-effective.



Snap on quick installation system

Adopting a patented buckle design, the lamp body can be disassembled without tools (single lamp installation time < 30 seconds), and maintenance and replacement efficiency is increased by 5 times.



Angle opening and closing design

Gear design is adopted for lamp body sleeve, and the installation angle is adjustable.



IK Degree: IK09

The degree of protection of the enclosure against harmful mechanical impact.



IP Degree: IP66

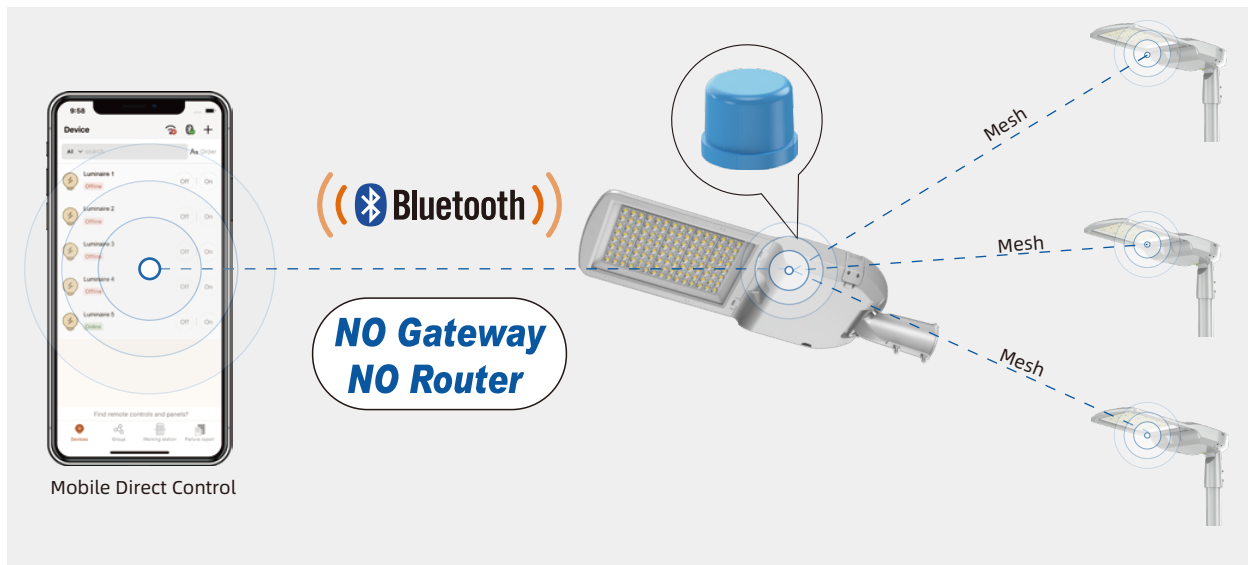
Prevent water spraying, and the water jet aiming at the equipment from any direction shall not cause damage.

03

04

Intelligent dimming technology

- Multi mode dimming: 0/1-10V infinite dimming: supports 0-100% brightness adjustment, suitable for different scene needs (such as lowering the brightness to 30% in late night mode).
- DALI/Intelligent Control Protocol: Can be integrated with intelligent lighting control systems to achieve time-sharing and zoning control (such as automatic lighting off in office buildings in the early morning).
- Environmental adaptation: An intelligent light controller can be added to automatically adjust brightness based on environmental illumination (such as starting full power at sunset and dropping to 20% at midnight).

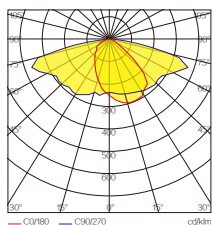


Smart Control and Dimmable Zhaga

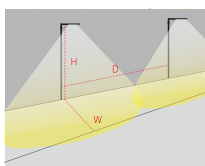


NEMA standard receptacle and cap

Light Distribution Display



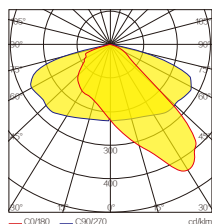
TYPE II



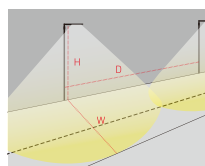
TYPE II : Mainly used for general parking lot lighting and large-scale square lighting. The lighting range is a circle, and the main body of the lamp holder is located in the center of the lighting area.

H=The vertical height of the street light pole and the ground
W = the width of the irradiated area
D = the distance between the street lamp and the street lamp

05



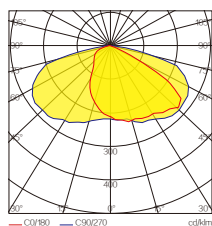
TYPE II-S



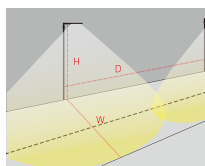
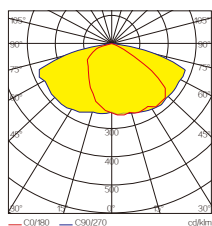
TYPE II-S: This type of light is mainly used for wide sidewalks, entrances to traffic lanes, bicycle lanes or other narrow and narrow lighting applications. The main body of the lamp holder is located on the side of the road, not in the center. The illumination width is roughly 1.75 times the lamp height.

H=The vertical height of the street light pole and the ground
W = the width of the irradiated area
D = the distance between the street lamp and the street lamp

06



TYPE III



TYPE III: Mainly used for highways, driving lanes, parking lots and general square lighting. The main body of the lamp holder is located on the side of the road, and the lighting width is 2.75 times the height of the lamp.

H=The vertical height of the street light pole and the ground
W = the width of the irradiated area
D = the distance between the street lamp and the street lamp



Widely used in public outdoor places such as urban main roads and expressways, commercial pedestrian streets, nighttime landscape areas, industrial parks, warehousing and logistics areas, residential areas and community roads, landscape rivers and parks and squares.



07

08

SHANGHAI CHZ LIGHTING CO.,LTD

21 6989-8169

86 133 9137 5176 | 86 159 2122 3752

www.chz-lighting.com

Sales@chz-lighting.com

No.518 Xiangjiang Road, Jiading, Shanghai, China.