

HB21 Series

LED HIGH BAY LIGHT

INSTRUCTION MANUAL



Thank you for purchasing our products. In order to ensure a completely understand of installing and using this product, please read the instructions carefully. And keep it after reading for future reference

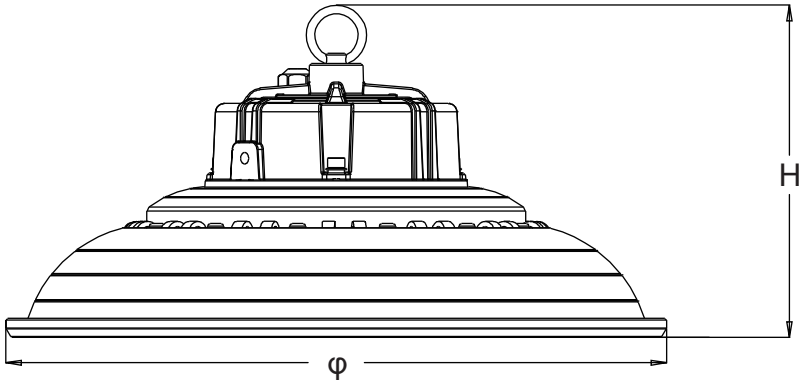
► Feature

- 1.Die-casting technology, ADC12 AL with 92% purification
- 2.Top brands chips, high brightness and CRI for cost saving
- 3.60/90/110°beam angle options , Anti-UV lens , transmittance up to 94%
- 4.Top brands waterproof driver IP65 , Input voltage AC100-277V

Environment Requirement

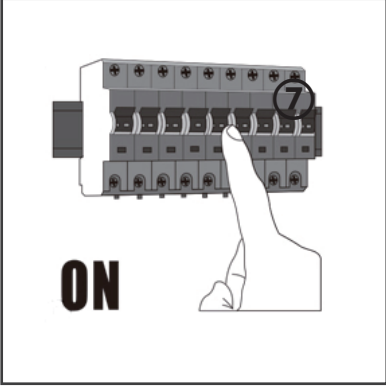
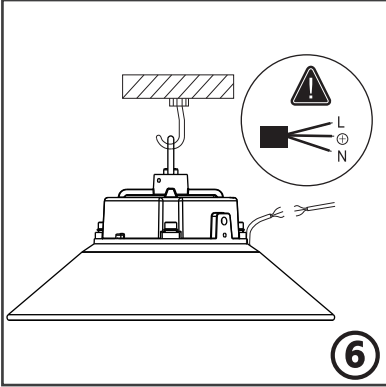
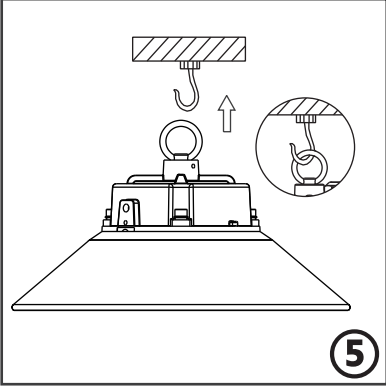
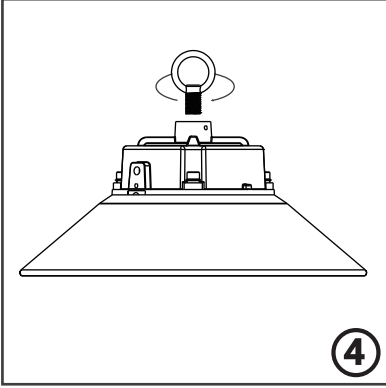
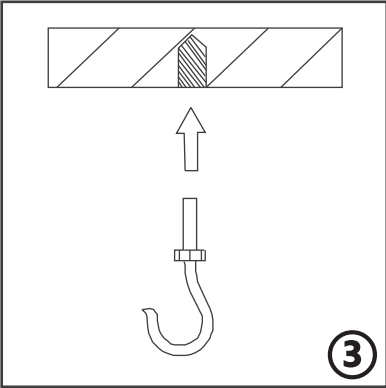
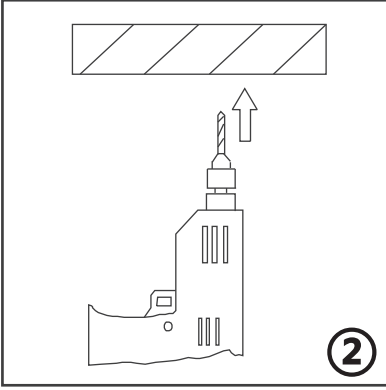
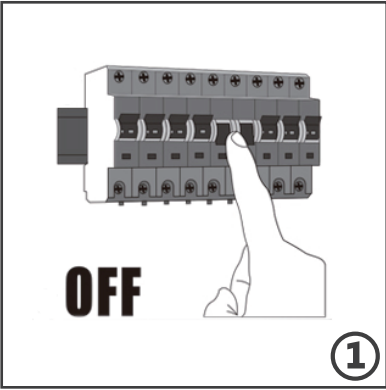
Working Temperature: -35~+50℃
Storage Temperature: -35~+50℃
Working Humidity: 0%~85%
Storage Humidity: 0%~90%

Specifications



Model No.	HB21-100W	HB21-150W	HB21-200W
Rated Wattage	100W	150W	200W
Input Voltage	AC 100-277V / 50-60Hz		
Power Factor	>0.9	>0.9	>0.9
LED Chips	SMD2835 / SMD5050		
Efficacy	>140LM/W@SMD2835, >160LM/W@SMD5050		
Beam Angle	60°/90°/110°	60°/90°/110°	60°/90°/110°
CCT	2700K~6500K	2700K~6500K	2700K~6500K
CRI	70/80	70/80	70/80
Product Size	φ290xH179(mm)	φ340xH185(mm)	φ360xH191(mm)
Working Temp.	-35~+50℃	-35~+50℃	-35~+50℃
IP Degree	IP65	IP65	IP65
Lifetime	50000Hrs	50000Hrs	50000Hrs

► Installation instruction



Note: The installation base must be able to support 10 times weight of the products



The light source contained in this luminaire shall only be replaced by the manufacturer or his service agent or a similar qualified person

Caution, risk of electric shock

Warning

1. Please install the lamp according to the installation to avoid dropping and electric shock.
2. Don't exchange the lamp as will to avoid dropping ,electric shock and damage of the lamp.
3. Working voltage is not to be exceeded AC100-277V 50/60Hz

Attention

1. Don't install the lamp to non-stable place.
2. Installed by qualified eletrician.
3. Switch off the switch box and contact certified electrician if the lamp works abnormally

ELECTRICAL CONNECTIONS - 100-240V/277V AC, 50/60Hz PHASE TO NEUTRAL WIRING

STEP 1:

Make the following Electrical Connections:

- a. Connect **INPUT GROUND** conductor to **GREEN WIRE** position of the terminal block or GROUND conductor of LED driver.
- b. Connect **INPUT VOLTAGE** conductor to **BROWN WIRE** position of the terminal block or LIVE conductor of LED driver.
- c. Connect **INPUT NEUTRAL** conductor to **BLUE WIRE** position of the terminal block or NEUTRAL conductor of LED driver.

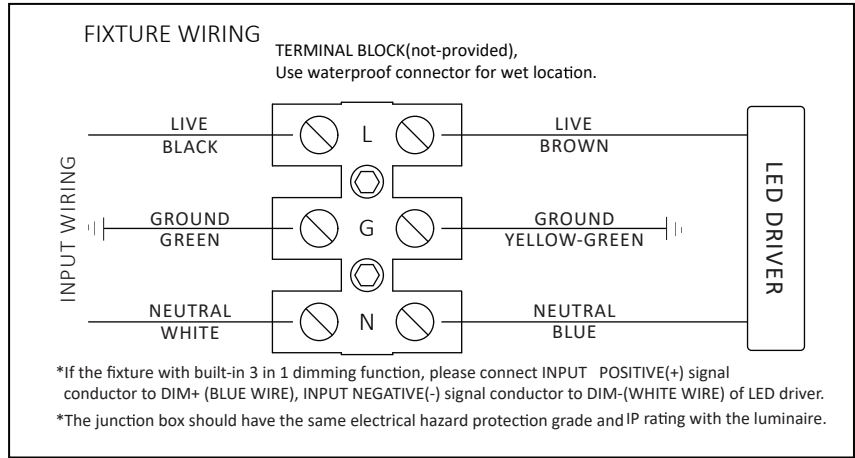
STEP 2:

Make sure all the connection are correct.

STEP 3:

If the fixture without a terminal block, please insulate all electrical connections with wire nuts suitable for at least 90°C.

Input cable should be at least H05RN-F 3x1.0mm²(SJTW 18AWG) or outdoor grade cable with rubber sheathed(not supplied). The cable must have a minimum cross sectional area of 1.0mm²(18AWG).



This marking indicates that this product should not be disposed with other household wastes throughout the EU. To prevent possible harm to the environment or human health from uncontrolled waste disposal, recycle it responsibly to promote the sustainable reuse of material resources. To return your used device, please use the return and collection systems or contact the retailer where the product was purchased. They can take this product for environmental safe recycling.

SHANGHAI CHZ LIGHTING CO., LTD.

No. 518, Xiangjiang Road, Shanghai, CHINA
+ 86 159 2122 3752 (English)
+ 34 615 734 994 (Español)
www.chz-lighting.com
service@chz-lighting.com

© 2020 SHANGHAI CHZ LIGHTING CO LTD All rights reserved. For informational purposes only. Content is subject to change. See www.chz-lighting.com for warranty and specifications. CHZ® and CHZ logo are registered trademarks.