

HB27 Series

LED HIGH BAY LIGHT

INSTRUCTION MANUAL



Operation Instruction for LED high bay light

Thank you for your purchase! Before install the product, please read this instruction carefully, and keep it for further reference.

► Characteristics

1. Die-casting technology, ADC12 with 92% purity, thermal conductivity 96W/m*25℃, excellent thermal management
2. Integrated valve to balance internal and external pressure and humidity
3. Light transmittance up to 92%
4. IP65 ingress protection rating

► Environment Requirement

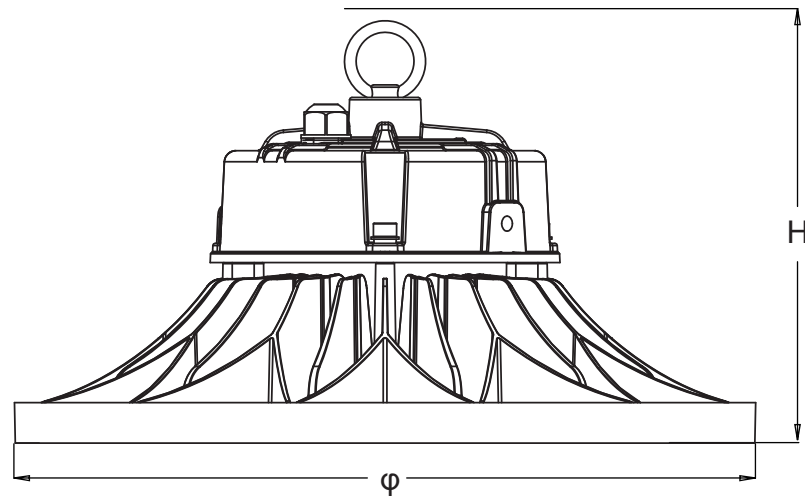
Working Temperature: -35~+50℃

Storage Temperature: -35~+50℃

Working Humidity: 0%~85%

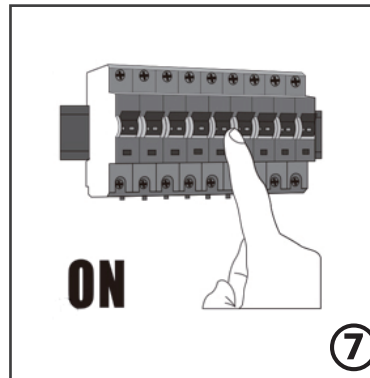
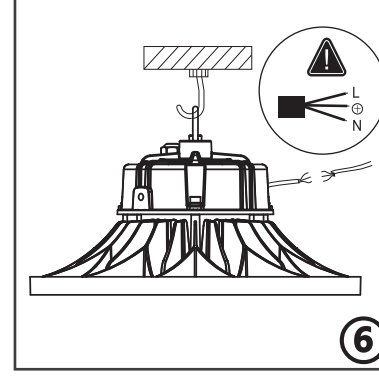
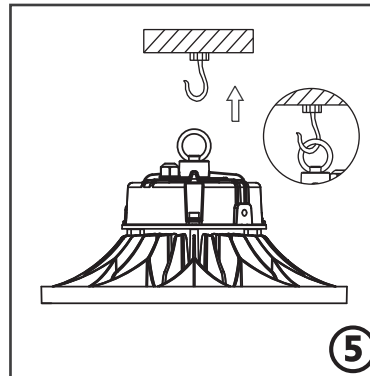
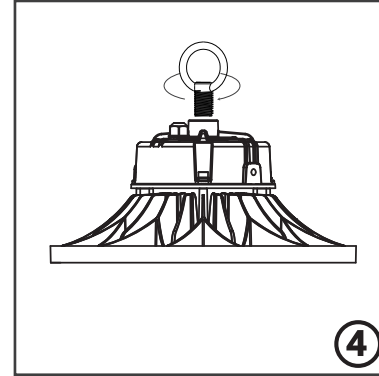
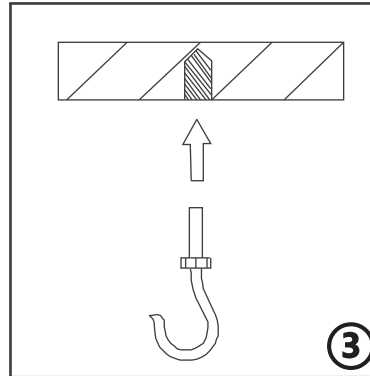
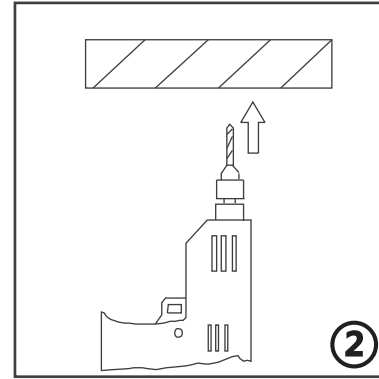
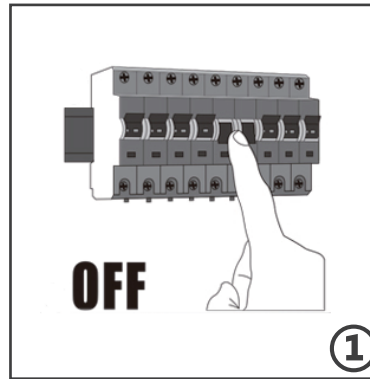
Storage Humidity: 0%~90%

► Product Information



Category	Specification				
Wattage	100W	150W	200W	250W	300W
Input Voltage	100-277V	100-277V	100-277V	100-277V	100-277V
Product size(mm)	φ246x112	φ270x126	φ320x150	φ320x150	φ390x161
LED chips	SMD2835	SMD2835	SMD2835	SMD2835	SMD2835
CCT	2700-6500V				
CRI	80				
Light efficacy	Up to 150lm/W				
Beam angle	60°/90°/120°				
Working Temperature	-35~+50℃				
lifespan	50000H (5 years warranty)				
IP degree	IP65				

► Installation instruction :



Note: The installation base must be able to support 10 times weight of the products



The light source contained in this luminaire shall only be replaced by the manufacturer or his service agent or a similar qualified person

Caution, risk of electric shock

Warning

1. Please install the lamp according to the installation to avoid dropping and electric shock.
2. Don't exchange the lamp as will to avoid dropping ,electric shock and damage of the lamp.
3. Working voltage is not to be exceeded AC100-277V 50/60Hz

Attention

1. Don't install the lamp to non-stable place.
2. Installed by qualified eletrician.
3. Switch off the switch box and contact certified electrician if the lamp works abnormally

ELECTRICAL CONNECTIONS - 100-240V/277V AC, 50/60Hz PHASE TO NEUTRAL WIRING

STEP 1:

Make the following Electrical Connections:

- a. Connect **INPUT GROUND** conductor to **GREEN WIRE** position of the terminal block or GROUND conductor of LED driver.
- b. Connect **INPUT VOLTAGE** conductor to **BROWN WIRE** position of the terminal block or LIVE conductor of LED driver.
- c. Connect **INPUT NEUTRAL** conductor to **BLUE WIRE** position of the terminal block or NEUTRAL conductor of LED driver.

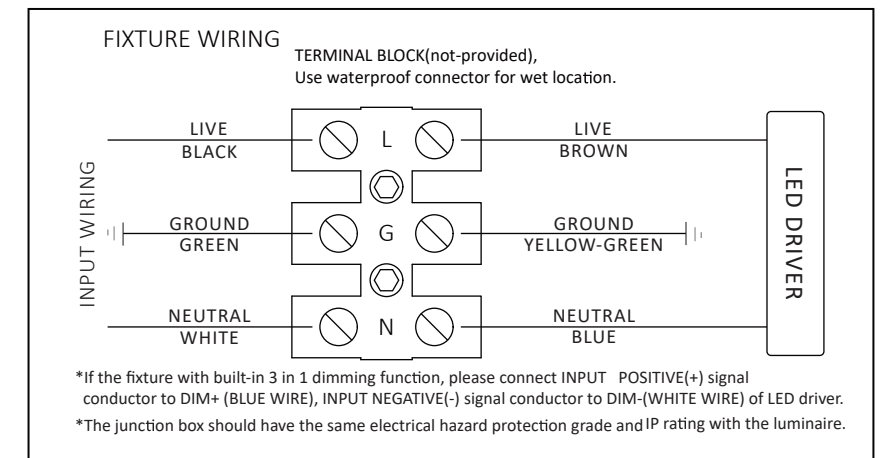
STEP 2:

Make sure all the connection are correct.

STEP 3:

If the fixture without a terminal block, please insulate all electrical connections with wire nuts suitable for at least 90°C.

Input cable should be at least H05RN-F 3x1.0mm²(SJTW 18AWG) or outdoor grade cable with rubber sheathed(not supplied). The cable must have a minimum cross sectional area of 1.0mm²(18AWG).



This marking indicates that this product should not be disposed with other household wastes throughout the EU. To prevent possible harm to the environment or human health from uncontrolled waste disposal, recycle it responsibly to promote the sustainable reuse of material resources. To return your used device, please use the return and collection systems or contact the retailer where the product was purchased. They can take this product for environmental safe recycling.

SHANGHAI CHZ LIGHTING CO., LTD.

No. 518, Xiangjiang Road, Shanghai, CHINA
+ 86 159 2122 3752 (English)
+ 34 615 734 994 (Español)
www.chz-lighting.com
service@chz-lighting.com

© 2020 SHANGHAI CHZ LIGHTING CO LTD All rights reserved. For informational purposes only. Content is subject to change. See www.chz-lighting.com for warranty and specifications. CHZ® and CHZ logo are registered trademarks.