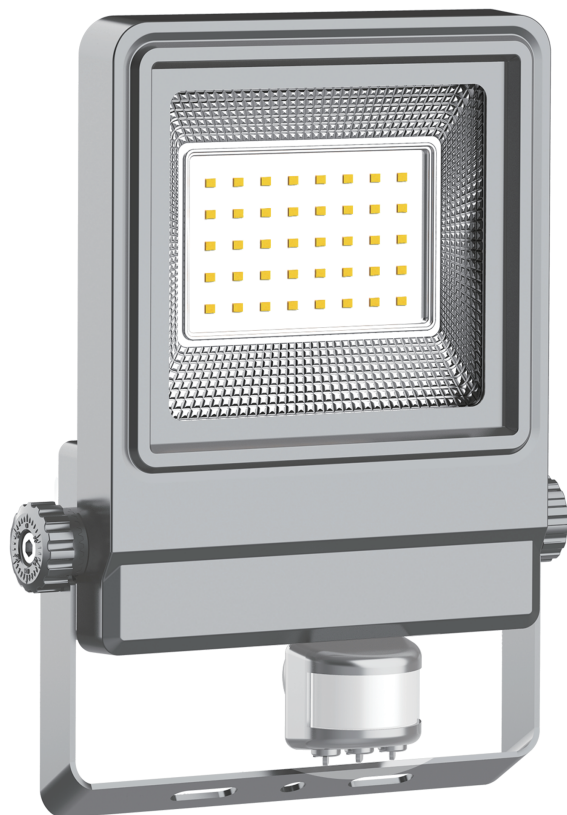




# FL39S FLOOD LIGHT USER MANUAL



## ➤ Operation Instruction for LED floodlight

Thank you for your purchase! Before install the product, please read this instruction carefully, and keep it for further reference.

## ➤ Characteristics

1. Slim design, non-assembled cover;
2. Advanced radiating system with two levels to ensure longevity of the product lifetime
3. Solid and resistant holder, easy to adjust, stable to hold the lamp
4. Scale formed reflective cover, a beautiful design
5. Thick rubber gasket for IP66 moisture & dirt resistance

## ➤ Environment Requirement

Temperature: -35~+50°C

Storage Temperature : -35~+50°C

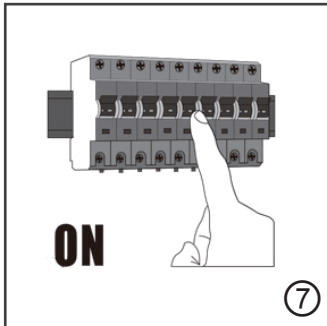
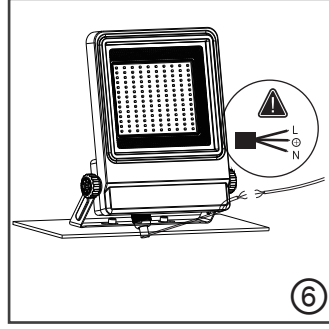
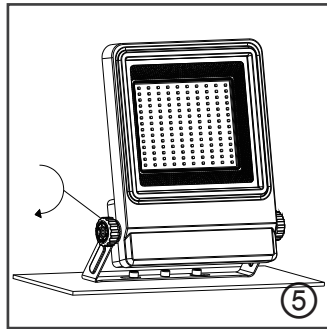
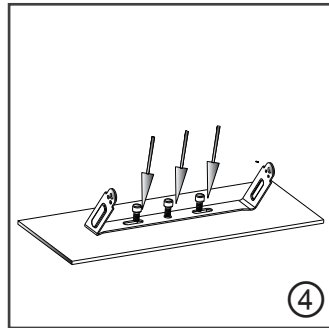
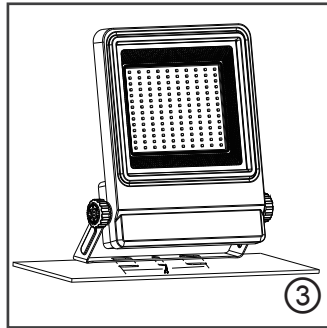
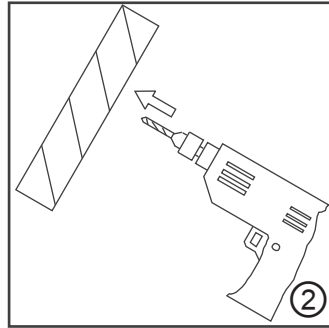
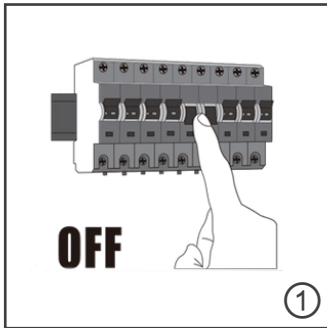
Working Humidity : 0%~85%

Storage Humidity : 0%~90%

## ➤ Product Information

Category	LED FLOOD LIGHT				
Wattage	10W	20W	30W	50W	100W
Light Efficacy	Up to 130lm/W				
Beam Angle	120°				
Input Voltage	AC100-277V				
CCT	2700-6500K				
CRI	70 / 80				
Temperature working	-35~+50°C				
Lifespan	50000H				
IP Grade	IP 66				

## Installation instruction :



Note: The installation base must be able to support 10 times weight of the products

## Safety Instructions

### ► Becareful!



1. Please use the product in accordance to this instruction
2. Please do not replace components or modify lamps without authorization

### ► Attention

1. For your safety, please cut off the supply before install the product
2. For the well function, please choose the voltage within the range specified on the product.
3. To avoid damage to the eyes, do not stare at a LED Light source long time.
4. Please follow the correct installation steps to install this product, for your safety, please cut off the electricity before installation.



This marking indicates that this product should not be disposed with other household wastes throughout the EU. To prevent possible harm to the environment or human health from uncontrolled waste disposal, recycle it responsibly to promote the sustainable reuse of material resources. To return your used device, please use the return and collection systems or contact the retailer where the product was purchased. They can take this product for environmental safe recycling.

### SHANGHAI CHZ LIGHTING CO., LTD.

No. 518, Xiangjiang Road, Shanghai, CHINA  
+ 86 159 2122 3752 (English)  
+ 34 615 734 994 (Español)  
[www.chz-lighting.com](http://www.chz-lighting.com)  
[sales@chz-lighting.com](mailto:sales@chz-lighting.com)

© 2020 SHANGHAI CHZ LIGHTING CO LTD All rights reserved. For informational purposes only. Content is subject to change. See [www.chz-lighting.com](http://www.chz-lighting.com) for warranty and specifications. CHZ® and CHZ logo are registered trademarks.