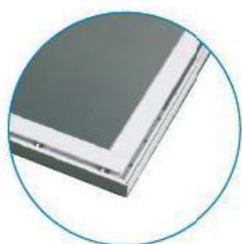


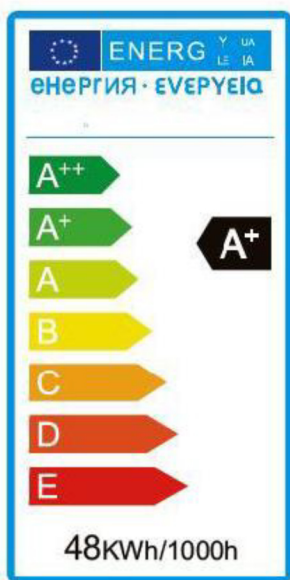


## LED Panel Series-600x600x10mm

### LED PANEL LIGHT



IP20 ~ IP65



The LED panel light is intended for illuminating indoor areas; it may be installed and used only in dry, enclosed indoor rooms. The product is intended for suspension at the ceiling where it is hung up by means of steel cables(should be bought separately).

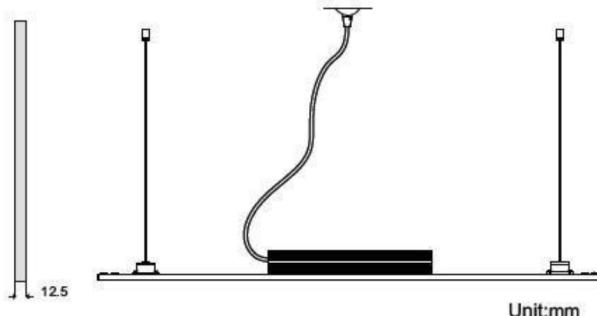
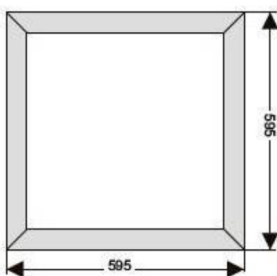
Please observe the specification carefully at all times! Our products complies with the applicable national and European requirements.

### FEATURES

- Light guide plate with 85% availability adopted to make the light well-distributed ;
- High quality aluminum shell adopted to settle for LED heat releasing and to ensure LED life time;
- High CRI to show the real color of goods and environment;
- 10mm ultra-thin structure in design, succinct and generous;
- Excellent heat dissipation structure, long life span, normal use can reach over 50,000hours;
- Lead free, eco-friendly, conforming to the requirements of ROHS;
- Wide voltage input, swift start, no flicker, no dazzle and no tingle;
- The panel light can be suspended or recessed, easy and quick.

### APPLICATIONS

Hotels / Schools / hospitals / Factories or offices / Subway /  
Some other commercial lighting / Residential or public facilities /  
Everywhere for energy-saving and high Ra lighting area



Unit:mm



## Product Data Sheet for CHZ-CP6060-36W

Name	LED Panel Light
LED Quantity	120pcs
Driver Brand	UL External Constant-Current Driver
Power Consumption	36W
Input Voltage	AC100-277V
Working Voltage	30-42V
Constant Current	900MA
LED Luminous Efficiency	100lm/w
Power Factor	>0.9
LED Life Expectancy	50000hours
Beam Angle	120°
Luminous Flux	3600±200lm
Color Temperature	WW/NW/CW
Protection Grade(IP)	IP20-IP65
Color Rendering Index(Ra)	>80
Temperature Rising	Pass according to En60598
Operation Temperature	-10° ~40°
Relative Humidity	Pass according to En60598
Fixture Material	Junction Box, Hanglig Cable
Cover Brand	AI R9016
Housing Color	Silver/White
Dimension/Size	600x600x10mm
Net Weight	3.9Kg
Shock Test	0.35-0.5Nm
Insulation Class	Class II
Certification	TUV/CE/FCC/PSE/RoHS
Warranty	5 years

