

LED Panel Lights

Installation Instruction



Kind reminding:




1. Thank you for selecting our LED panel lights. Please refer installation to a qualified technician;
2. The buyer reserves the right to request replacement for any faulty resulted from material or assembling mistake;
3. In case of failure, do not maintain it in private, or the buyers bear all the loss.

Product Feature :

- 1.Materials: imported LED chips, high brightness, power saving above 50%;
high CRI to show the real color of goods and environment;
high quality aluminum shell adopted to settle for LED heat releasing and to ensure LED lifetime.
light guide plate with 85% availability adopted to make the light well-distributed.
- 2.Style: 12mm ultra-thin structure in design, succinct and generous,
295*295mm, 295*595mm,595*595mm,1195*295mm,620*620mm and 1195*595mm available; single,
dimmable, RGB functions for selection.
- 3.Features: wide voltage input, swift start, no flicker, no dazzle and no tingle.
- 4.Installation: suspended, mounting or recessed installation available,easy and quick.

Symbols :

Please note the special Symbols in the installation instruction is to ensure the correct installation.

-  Notice: offer some skills or other information to helpfully finish the work.
-  Caution: Keep you in safety when installation.
-  Importance: when installation, please make sure to do that with the description of instruction.

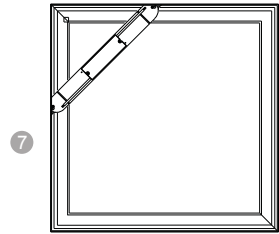
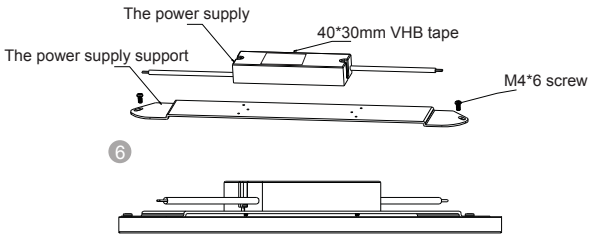
Important notice:

1. Let the qualified technician install the panel lights
2. Disconnect the power supply from AC power before installing, dismantling or maintaining the unit
and make sure all connectors are connected properly.
3. Fragile handle with care when installation.
4. Manufacturer is not responsible for the damage by incorrect installation regardless of the instruction.
5. Please connect AC end after the installation is finished.

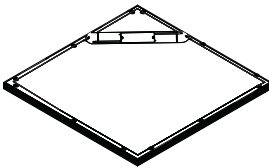
Installation steps:

Installation steps(with power supply support):

1. Screw the power supply into the power supply support by 1pcs of 3M VHB tape. (Picture 6)
2. Make sure the power supply is tight on the support, and then use 2 pcs of M4*6 screws to fasten the support on the panels.(Picture 7)



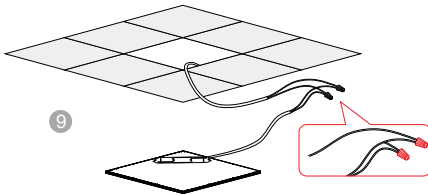
3. Connect the output end of power supply to the input end of the panel light. (Picture 8)



Caution:

- 1> Note the "+" and "-" poles of power supply. ("+" pole, with letters)
- 2> Use the screws to hold the wires tightly.
- 3> Keep the power off to connect the wires.
- 4> Do not apply a lot of pressure to twist the screws and make the panel light broken.

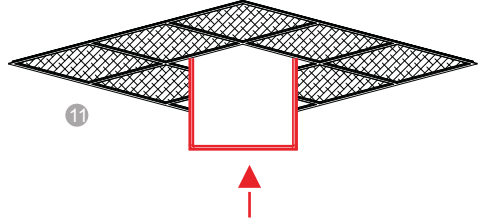
4. Connect the input end of power supply to AC. (Picture 9)



Caution:

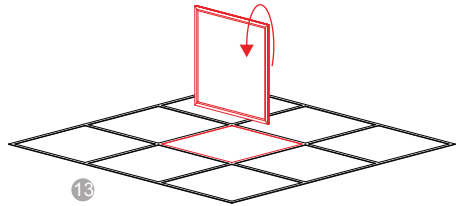
- 1> Electric insulating treatment is needed to keep safety.
- 2> Keep the power off to connect the wires.

1. Install panel light on the ceiling board. (Picture 10, 11)

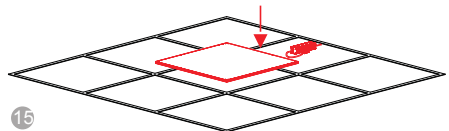


- 1> Turn over panel light with 45° and put it on the ceiling board.
Do not press or pass through ceiling board strongly.
- 2> Carefully install it so that it get a good lighting effect.
- 3> Consider the installation specification(Size) before choose the recessed panel light.
- 4> Do not directly put the driver on the back-plate of panel light.

2. Take the lighting surface of panel light down. (Picture 12 and 13)



3. Aligning the site of panel light and ceiling board and finish the installation.(Picture 14,15)

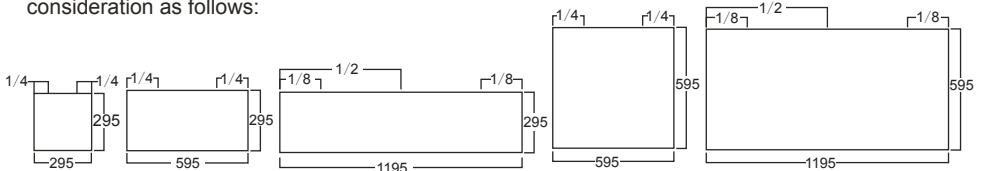


4.The picture for finishing the installation and light it.(Picture 16)



- 1> Finish the installation, check the connectors.
- 2> Check all connectors' "+" and "-" poles to be connected correctly.
- 3> Check the sites with screws are locked tightly or not.

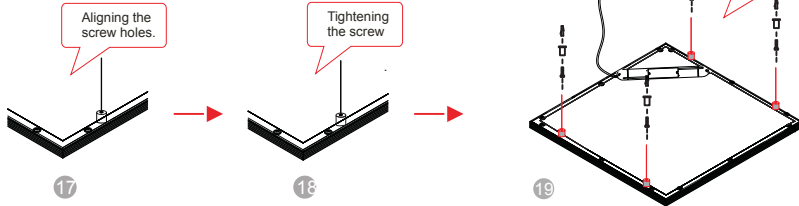
5. Remark: If panel light will be suspended, you need to take the suspending position of each size into consideration as follows:



Installation steps:

Suspended Installation

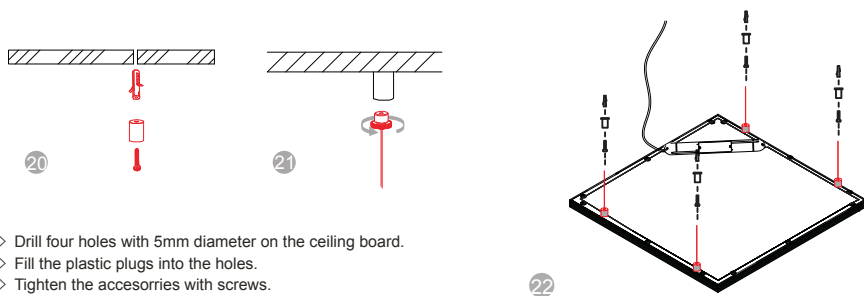
1. Fix the corner accessories on the panel light. (Picture 17,18,19)



Note:

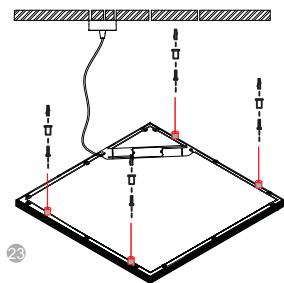
- 1> Put a soft cushion under the panel light to protect when fix the corner accessories.
- 2> Carefully install it so that it gets a good lighting effect.
- 3> Do not apply a lot of pressure to twist the screws and make the panel light broken.

2. Fix the corner accessories on the ceiling board. (Picture 20,21,22)

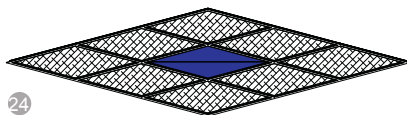


- 1> Drill four holes with 5mm diameter on the ceiling board.
- 2> Fill the plastic plugs into the holes.
- 3> Tighten the accessories with screws.

3. Connect the input end of power supply to AC. (picture 23)



4. The picture for finishing the installation and light it. (Picture 24)



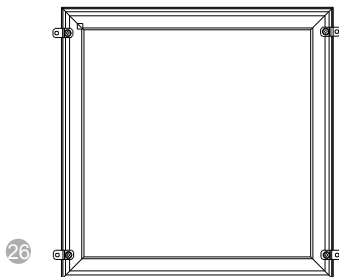
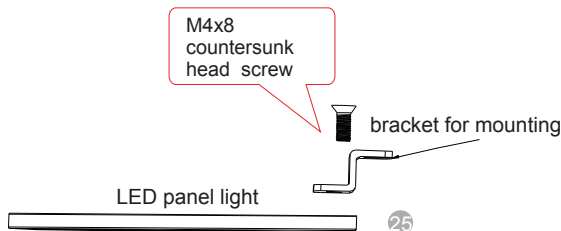
Important Notice:

- 1> Finish the installation, check the connectors.
- 2> Check all connectors' "+" and "-" poles to be connected correctly.
- 3> Check the sites with screws are locked tightly or not.

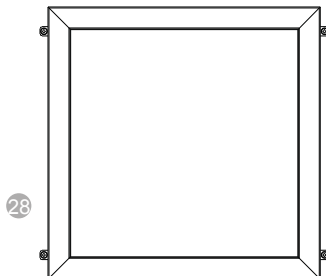
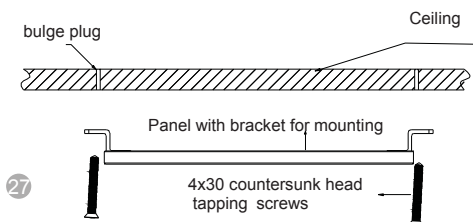
Installation steps :

⊕ Mounting Installation.

1. Screw the bracket onto the panel in right position by 4 pcs of M4x8 countersunk head screws, and make sure they're tight. (Picture 25 and 26)



2. Drill a D6mm hole in the ceiling in accordance with the size of the bracket, then put the bulge plug in. Finally, use the 4x30 countersunk head tapping screws to fasten the panel into the holes.(27 and 28)



NOTE:

The LED panel light is intended for illuminating indoor areas; it may be installed and used only in dry, enclosed indoor rooms. Please observe the specification carefully at all times! Our products complies with the applicable national and European requirements.

- The product does not require any maintenance. You should never take it apart. The LED used are permanently installed; they cannot be replaced.
- Before cleaning the product it must be disconnected from the power supply. Unplug the mains plug from the power supply or switch off the mains voltage.
- Dust can easily be removed using a clean, soft brush and a vacuum cleaner. Don't clean the surface with any chemicals.
- **Do not directly put the driver on the back-plate of panel light once use it, if you want put it, must use our standard driver holder**
- Do not press too strongly on the diffuser plate of the LED panel as this may cause scratches or other damage.
- Due to the physicochemical property of PS materials, after long term use, it will most likely have yellowing issues. Please pay strict attention to operating environment and temperature(-20°~45°). It is strongly recommended not to illuminate the LED Panel for over 10 hours per day.