

CHZ-CPL01 series LED LAWN LIGHT

FEATURES

Main body is made of Die-casting aluminum alloy with Extruded aluminum alloy. The diffuser is a frosted anti-UV polycarbonate for high efficiency and vandal resistance.

Lumileds 2835 LED chip and Philips driver as regular, Tridonic, Eaglerise, Kegu driver options. Easy access to LED and driver via a removable head.

3000-6500K color temperature options; Tamper proof fixings for increased vandal resistance

IP65 and IK08 protection degree.

Anti-UV electrostatic powder spraying, regular color: Black, Silver, RAL7043, RAL7016.

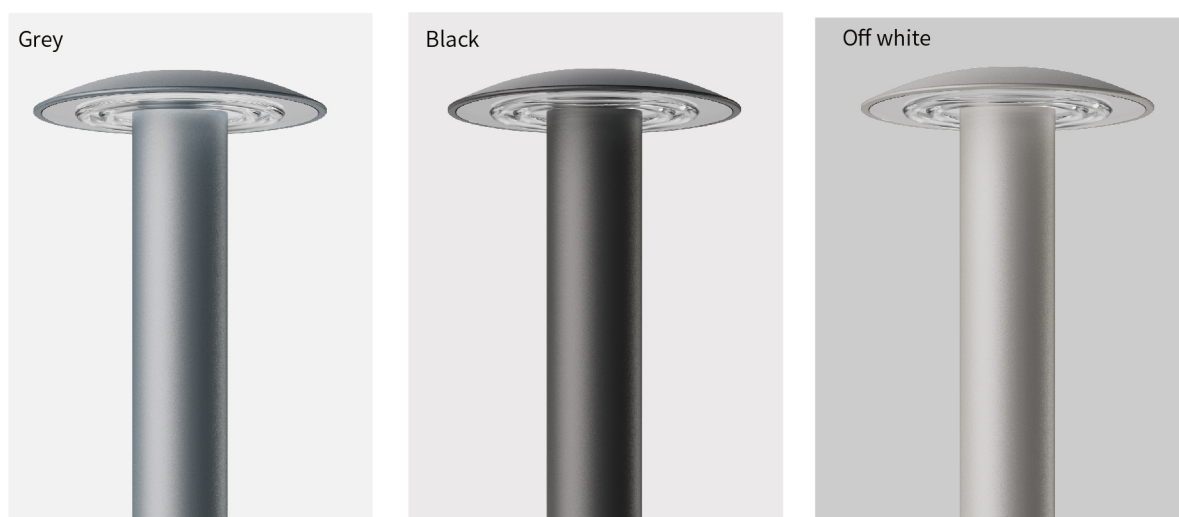


Specification

Product Number	CPL01-10W	CPL01-12W	CPL01-15W	CPL01-20W
Rated Power	10W-20W			
Input Voltage	200-240V			
Type Of Driver	OSRAM, KEGU, EAGLERISE			
Chip Type	SMD2835			
Led Light Luminous	>100LM/W			
Beam Angle	90°			
Control method	Regular, 0-10V/DALI dimming, optional			
Sensor	NO			
Power factor	>0.9			
Color rendering index	>80			
Frequency Range	50/60Hz			
Color Temp	2700-6500K			
Lamp body material	AL Body, PC lens and GLASS cover			
Installation diameter	/			
Working Temperature	-40~55°C			
Working Humidity	10~90%			
Life/Warranty	>50,000hrs			
IP Grade	IP65			
IK Grade	IK08			
Product Diameter	230mm/76mm			
Product Height	400-1000mm			

01

Color options



02

LED lawn light

Widely used in outdoor environments such as city parks, country roads, slow lanes, industrial parks, leisure plazas, and etc.



Walkways



Parks / Gardens



Car parks



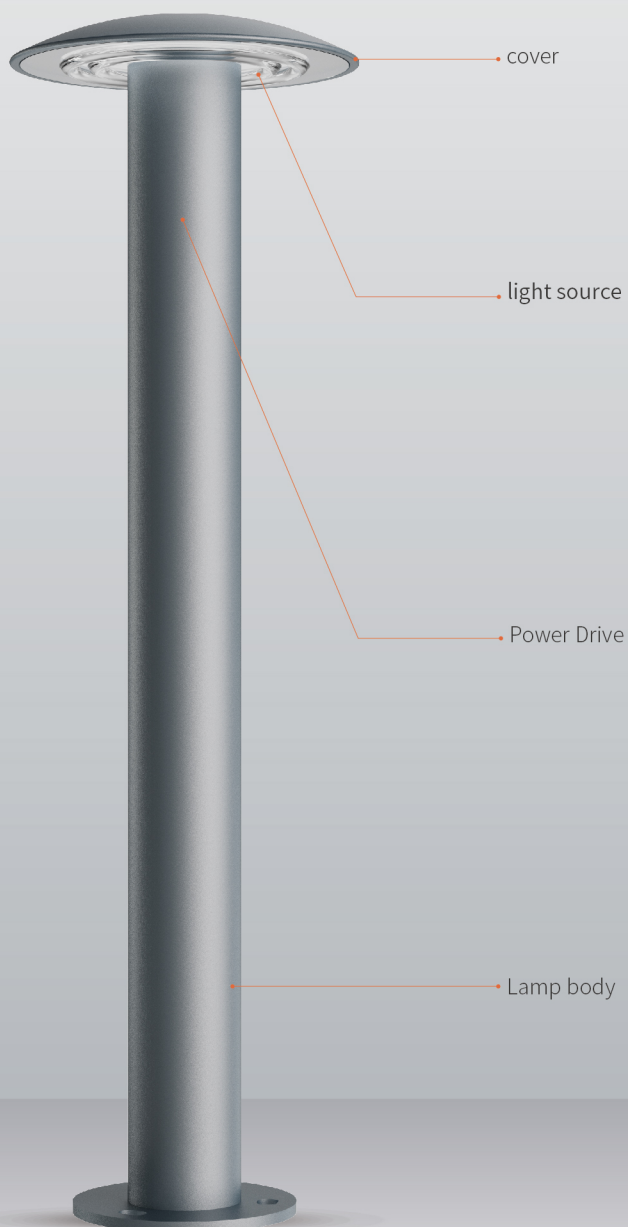
Prestigious



Retail



Amenity



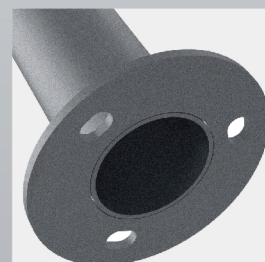
DETAIL DISPLAY



TEMPERED GLASS



LED DRIVER

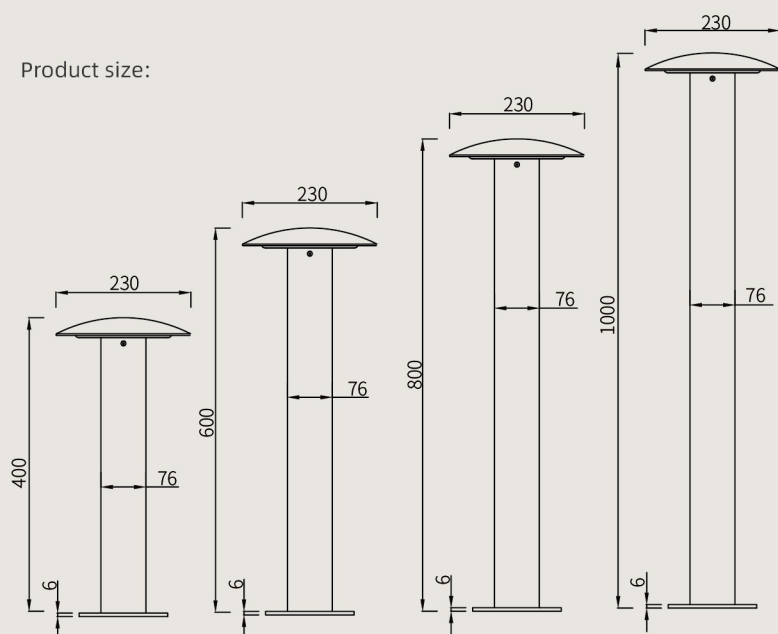


DIE CASTING INNER BASE

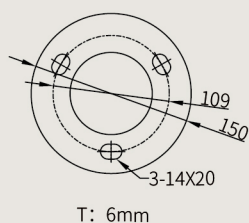
Demension

The result of high permeability glass lens is very uniform light distribution, and the light will not turn yellow. The built-in design reduces glare and ensures good visual comfort.

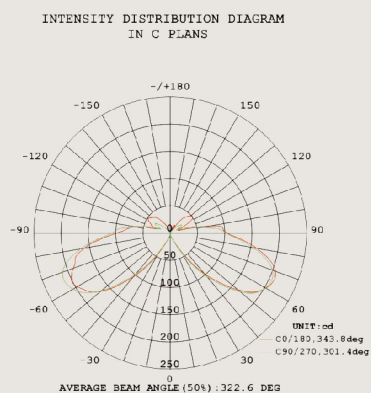
Product size:



Product installation diagram:



Product lighting:



03

04





SHANGHAI CHZ LIGHTING CO.,LTD

21 6989-8169

86 133 9137 5176 | 86 159 2122 3752

www.chz-lighting.com

Sales@chz-lighting.com

No.518 Xiangjiang Road, Jiading, Shanghai, China.