

CE CB RoHS



## GD35 series LED Courtyard Light

30~120W

- Fashionable and modern appearance design, clever creative ideas;
- The lamp body is formed by die-casting aluminum process, which is corrosion-resistant;
- Modular design can be selected according to customer requirements;
- Using high-efficiency SMD5050 lamp beads, and high-quality constant current drive, reliable performance and long life;
- Fasteners are made of stainless steel and are not easy to rust;
- Exquisite structure waterproof design, protection level up to IP66;
- The combination of three installation methods is suitable for different occasions.



GD35A



GD35B

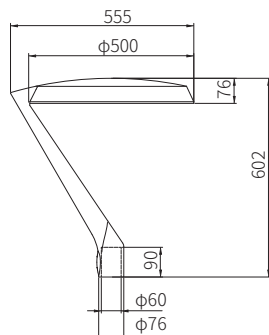


GD35C

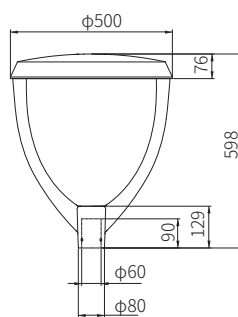
Product Number	GD35-A	GD35-B	GD35-C
Rated Power	30W-120W	30W-120W	30W-120W
Input Voltage	AC100~277V		
Type Of Light Source	Cree/seoul/lumileds		
Chip Type	SMD5050		
Led Light Luminous	>140LM/W		
Beam Angle	30°/60°/90°/TYPE II/ TYPE III/ TYPE IV , Multi-angle optional		
Frequency Range	50/60Hz		
Color Temp	2700-6500K		
Dimming Options	No dimming / 1-10V / 0-10V / PWM, Optional		
Material	Die-cast aluminum lamp housing + PC lens		
Power Factor	>0.95		
Working Temperature	-30~60°C		
Working Humidity	10~90%		
Life/Warranty	>50,000hrs		
IP Grade	IP66		
IK Grade	IK08		
Lamp Size	555x500x602mm	φ500x598mm	703x500x76mm

01

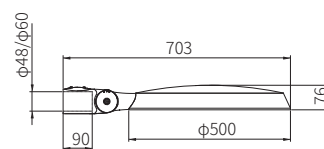
## Product Size



GD35A



GD35B



GD35C

02



### IK Degree: IK08

All-round sealing,  
anti-drop, anti-collision,  
Adopt ADC12 material,  
sturdy and more durable.



### IP Degree: IP66

Professional all-round  
waterproof technology,  
Rainproof, anti-corrosion,  
high temperature resistance  
and more durable.

## Product Display

GD35 combines a visually stunning fixture with three different mounting styles. The result is a lighting solution that bolsters the richness of every environment in which the luminaire is installed. Regardless of configuration, each product in the GD35 series features the same beautifully curved fixture with a clean housing and a near seamless mounting assembly.

### POLE MOUNTED

- The pole mounted luminaires are available with upswept side-arm and decorative pendant mounting configurations. Contemporary and sleek styling help the GD35 blend into any environment.



### FLOWING FORM

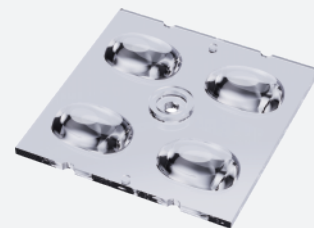
- Smooth transition regardless of mounting
- Styling complements surroundings
- Well hidden hardware



### OPTICAL SYSTEM

- With its dense LED arrangement and precision optics, the GD35 delivers high-performance illumination and extraordinary visual comfort.

Patented light source technology, through a special structure, the light emitted by the light source can be formed into a bat wing shape to achieve the best uniform illumination and improve the lighting effect.



## Product Display

Lighting plays an increasingly important role. A good lighting environment helps residents and visitors feel safe and experience the city more pleasantly even at night.

Urban lighting plays an important role in making cities better and safer. Good lighting helps residents and visitors to feel better and enjoy the city at night also. Thanks to the LED efficient lighting system, energy consumption can be reduced, energy efficiency and sustainability can be achieved.



03

04

### Optional optical controller

This series of lamps can be equipped with various sensors/light management systems, which can achieve functions such as photoelectric timing, dimming, remote management, and fault alarm.





## Product Display

The overall design of this lamp is based on simple design, and the shape is modern and beautiful.

Outline the outer contour of the whole lamp with simple lines,

And integrate into the combination of point, line and surface elements in aesthetics.

The lamp body is made of high-pressure die-casting aluminum, which has strong corrosion resistance;

High-efficiency heat dissipation design of the module, durable;

Can adapt to a variety of optical angles,

suitable for different installation environments, three-dimensional and full of layers.

### POLE MOUNTED

- The pole mounted luminaires are available with upswept side-arm and decorative pendant mounting configurations. Contemporary and sleek styling help the GD blend into any environment.

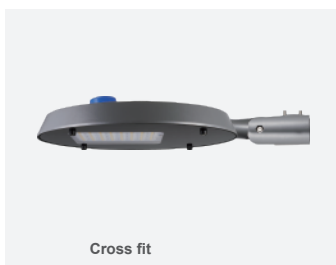
### FLOWING FORM

- Smooth transition regardless of mounting
- Styling complements surroundings
- Well hidden hardware



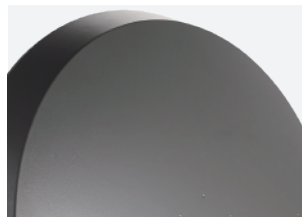
### Installation method

The luminaire adopts horizontal and vertical installation, and supports angle adjustment, which can be adjusted according to different lighting environment to meet different lighting needs.



## BODY

The body is made of high pressure die-cast aluminum with strong corrosion resistance. The overall modeling design is simple and atmospheric, modern and beautiful.



## Four in one light source

Using four-in-one light source chip to obtain the best uniform illuminance and improve the lighting effect. High luminous efficiency, more energy saving, and cost-effective.



## Detail display of single arm model

The side of the lamp can be paired with a single arm sleeve, with a simple design and a sense of design. It can be selected according to the lighting environment requirements.



## Double arm style detail display

The lamp can be paired with a double arm sleeve, with a symmetrical and layered design, and can be selected according to the lighting environment requirements.



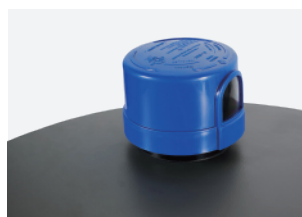
## Side mounted details display

The side of the lamp is equipped with an angle adjustable sleeve, which supports horizontal and vertical installation, and can be selected according to the lighting environment needs.



## Photocell

Photocell sensors switch the luminaire on as soon as natural light falls to a certain level. It can be programmed to switch on during a storm, on a cloudy day (in critical areas) or only at nightfall so as to provide safety and comfort in public spaces.



05

06

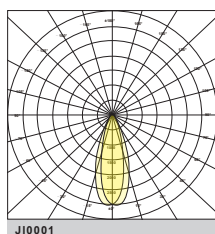
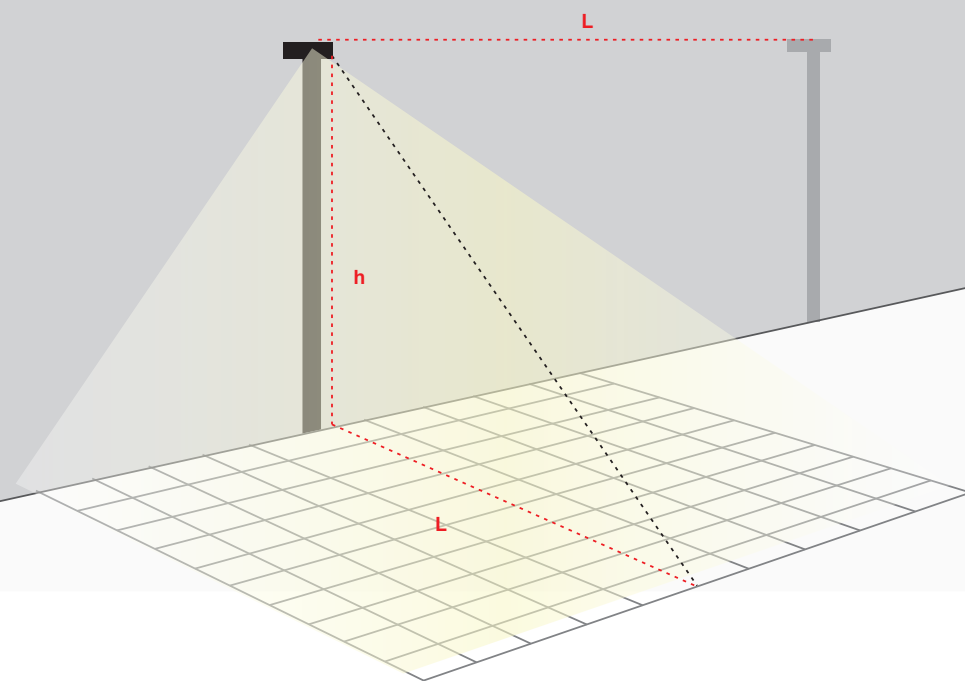
## Light distribution display

**D=Distance to height ratio ( $L/h$ )**

**H=height of lamp pole**

**L=distance between lamp poles**

**L=Lighting area width**

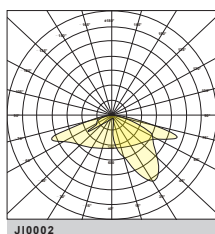


Key atmosphere lighting for buildings, trees, and sculptures in urban public spaces

$I=(0.8-4.0) h$

$D=1$

Glare level: G5 (Lens)

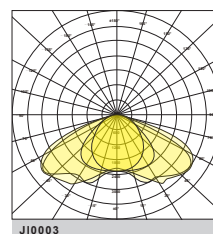


Suitable for pedestrian lighting in urban commercial blocks, squares, parks, scenic spots, residential areas, and parks

$I=(3.0-6.0) h$

$D=1$

Glare level: G5 (Lens)

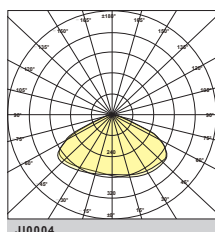


Suitable for lighting of urban commercial blocks, squares, parks, scenic spots, residential areas, and park roads

$I=(3.0-8.0) h$

$D=1$

Glare level: G5 (Lens)

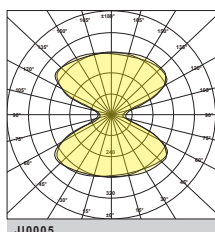


Suitable for pedestrian lighting in urban commercial blocks, squares, parks, scenic spots, residential courtyards, and parks, with high visual comfort

$I=(3.0-4.0) h$

$D=1.2$

Glare level: G7 (diffuser)

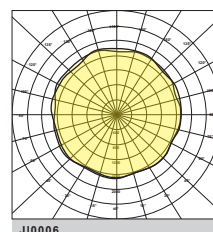


Suitable for pedestrian lighting in urban commercial blocks, squares, parks, scenic spots, residential courtyards, and parks, with high visual comfort

$I=(3.0-4.0) h$

$D=1.2$

Glare level: G7 (diffuser)



Suitable for pedestrian lighting in urban commercial blocks, squares, parks, scenic spots, residential courtyards, and parks, with high visual comfort

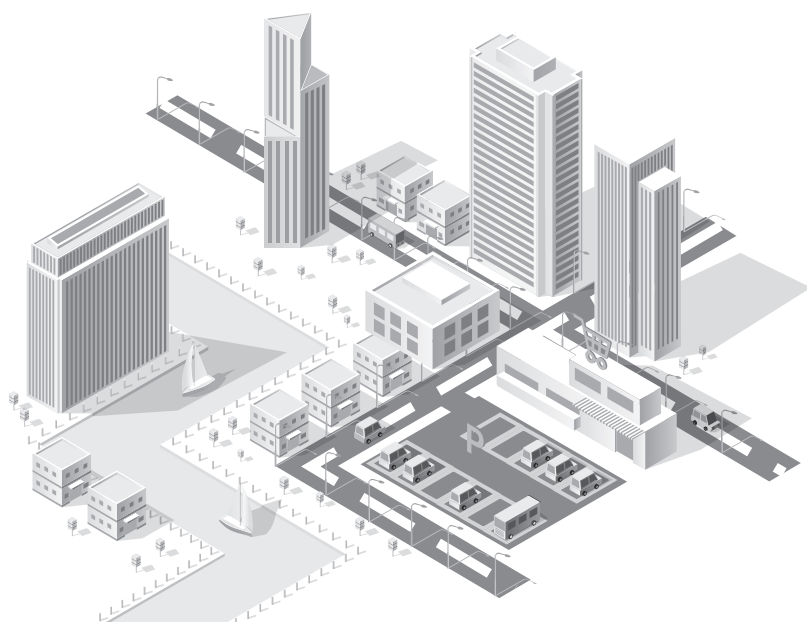
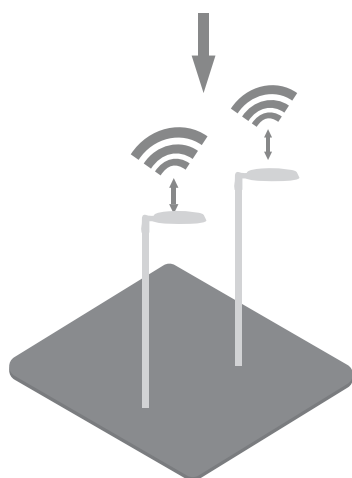
$I=(3.0-4.0) h$

$D=1.2$

Glare level: G7 (diffuser)

## Intelligent Lighting

The lamps can be equipped with smart components and configured as smart street lamps, integrating transportation, environmental monitoring, energy management, city management and other hardware functions, which can be widely distributed to all corners of the city to help the construction of smart cities.



traffic

Environmental  
monitoring

Traffic management

City management

## Control options

From simple factory-set dimming to full CMS: enhance your luminaire through intelligent, connected sensors and control systems.

### Benefits of smart control

- Reduced energy consumption
- Reduced carbon footprint
- Longer luminaire life
- Lower capital, maintenance and energy costs
- Ability to collect data



#### Bluetooth

For on/off switching, light control and dimming



#### Smart control

Integral CMS: connected (or Smart) assets which use wireless communications networks, offering optimal flexibility. Control a single luminaire or group switch remotely.

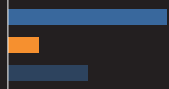


#### Simple, stand-alone controls

Factory-set dimming, time switches, photocells and presence detectors. Control in its simplest form.

07

08



main light source

## Schematic diagram of color temperature

The color temperature can be adjusted according to the lighting needs, and 2700K-6500K cold and warm light can be switched to meet different lighting needs.



## • Scope of application

It is widely used in any outdoor lighting places such as roads, squares, scenic spots, parks, etc.



09



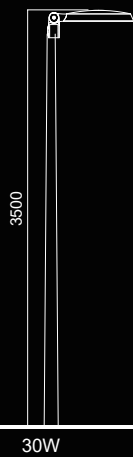
10





GD35A .AC

LED Garden Light





11

12