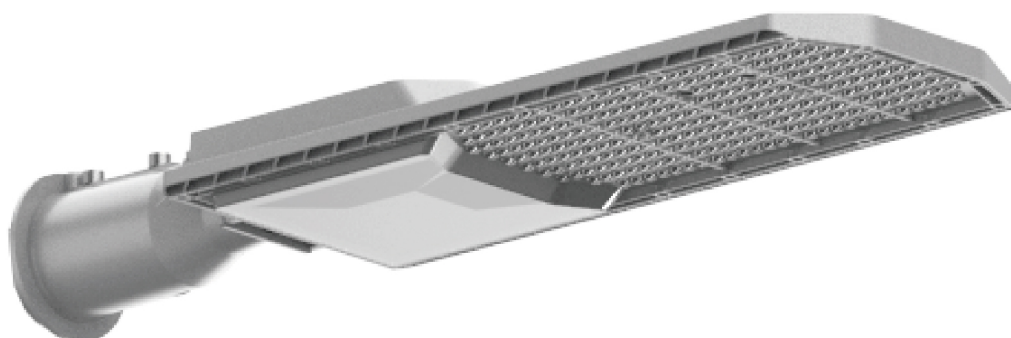


CE CB RoHS



ST43 series LED Street Light

50W~200W

- All aluminum die-casting shell with high thermal conductivity and heat dissipation structure design, with a luminous efficiency of up to 140LM/W.
- Gear design is adopted for lamp body sleeve, and the installation angle is adjustable.
- Low energy consumption, using high-efficiency constant current drive, saving 60% energy; Equipped with overcurrent, overvoltage, lightning, and high temperature protection, fully ensuring product life and stable performance.
- Bat wing light distribution to achieve the best uniform lighting and improve the lighting effect.
- Light controller can be installed optionally to facilitate light control and other intelligent control.
- The protection level can reach IP66&IK08.



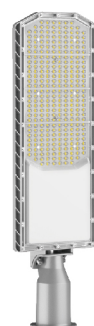
ST40-30W



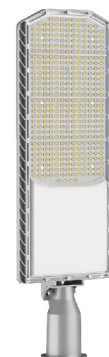
ST43-50W



ST43-100W



ST43-150W

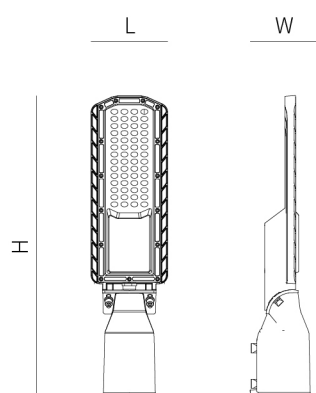


ST43-200W

Product Number	ST43-30W	ST43-50W	ST43-100W	ST43-150W	ST43-200W
Rated Power	30W	50W	100W	150W	200W
Input Voltage	AC100-277V, 50/60Hz				
DriverFunction	XINC or ZHIHE, optional				
LED Chips	SMD2835				
Chip Qty	56PCS (8S7P)	96PCS (8S12P)	192PCS (8S24P)	270PCS (9S30P)	384PCS (8S48P)
Electrical Class	CLASS I (default) / CLASS II, optional				
Color Rending	CRI >80				
Color Temp.	2700/3000K/4000K/5000K/5700K/6500K, optional				
Beam Angle	TYPE II				
Efficacy	>140LM/W				
Material	Die-cast Aluminum Housing + PC lens				
Power Factor	>0.90				
Working Temperature	-30°C~+50°C				
Working Humidity	10%~90%				
Lifetime	>50,000hrs				
IP degree	IP66				
IK degree	IK08				
Product Size	425x108x96mm	477x138x96mm	566x177x96mm	650x210x96mm	719x244x96mm
Holder Size	Φ60mm				

01

Product Size



产品型号	L	W	H
ST43-30W	108	96	425
ST43-50W	138	96	477
ST43-100W	177	96	566
ST43-150W	210	96	650
ST43-200W	244	96	719

02



IK Degree: IK08
The degree of protection of the enclosure against harmful mechanical impact.



IP Degree: IP66
Prevent water spraying, and the water jet aiming at the equipment from any direction shall not cause damage.

Product Display

ST43 will use stunning fixtures visually. The result is a lighting solution that enhances the richness of the lighting installation environment.

Regardless of the configuration, each product in the ST43 series features the same graceful bending fixture, clean casing, and almost seamless installation components.

POLE MOUNTED

- The pole mounted luminaires are available with upswept side-arm and decorative pendant mounting configurations. Contemporary and sleek styling help the ST43 blend into any environment.

FLOWING FORM

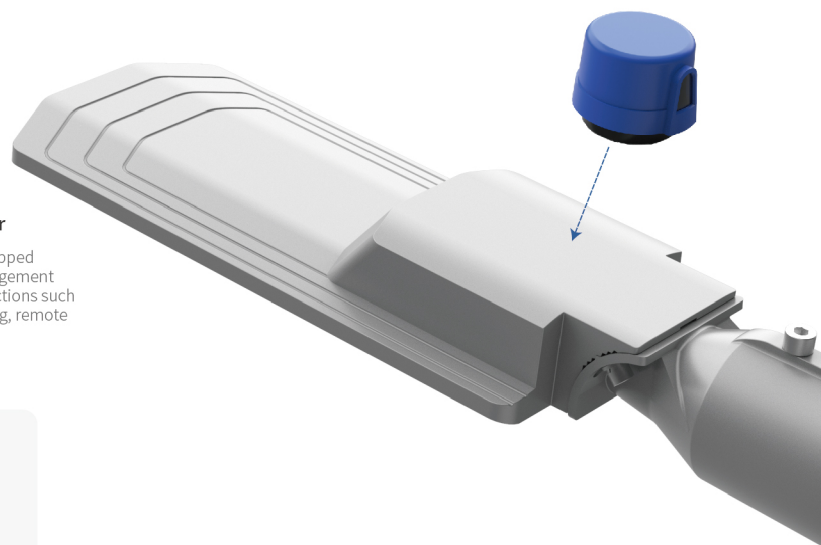
- Smooth transition regardless of mounting
Styling complements surroundings
Well hidden hardware

OPTICAL SYSTEM

- With its dense LED arrangement and precision optics, the ST43 delivers high-performance illumination and extraordinary visual comfort.

Optional optical controller

This series of lamps can be equipped with various sensors/light management systems, which can achieve functions such as photoelectric timing, dimming, remote management, and fault alarm.



Product Display

Lighting plays an increasingly important role. A good lighting environment helps residents and visitors feel safe and experience the city more pleasantly even at night.

Urban lighting plays an important role in making cities better and safer. Good lighting helps residents and visitors to feel better and enjoy the city at night also. Thanks to the LED efficient lighting system, energy consumption can be reduced, energy efficiency and sustainability can be achieved.



Lightning protection module

While waterproof and breathable, it can balance pressure, reduce fogging, frost, and eliminate moisture. It also has functions such as micro heat dissipation, high and low temperature resistance, corrosion resistance, oil pollution, and UV resistance.



Power drive

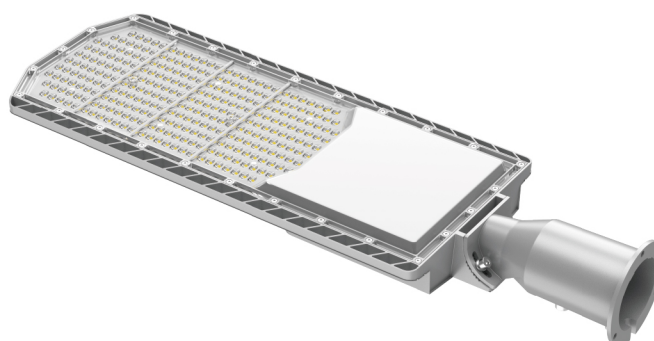
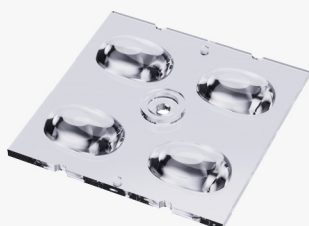
Constant current output control mode, dimmable shutdown, lightning protection, overvoltage protection, short circuit protection and over temperature protection to ensure high product reliability



Power-off switch design

Maintenance personnel can repair or replace the luminaire without cutting off the power supply, which is safe and convenient, and there will be no safety hazards.

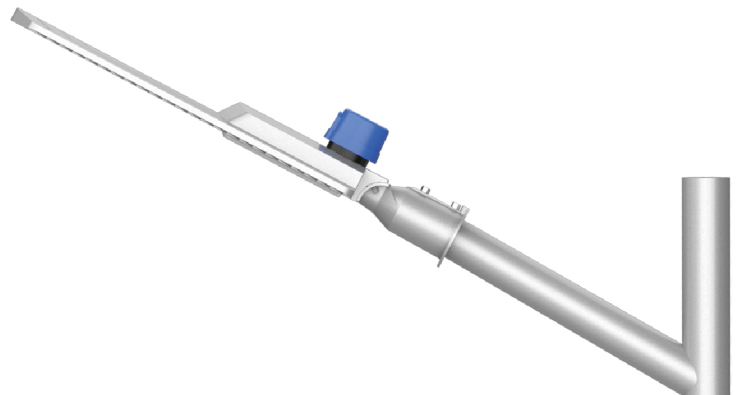
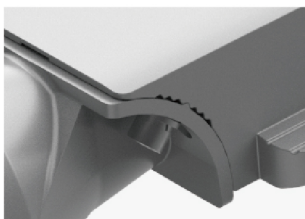
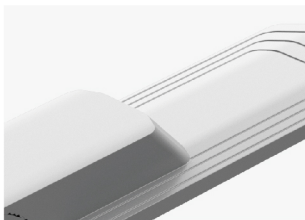
Patented light source technology, through a special structure, the light emitted by the light source can be formed into a bat wing shape to achieve the best uniform illumination and improve the lighting effect.



03

04

Product Display



BODY

The body is made of high pressure die-cast aluminum with strong corrosion resistance. The overall modeling design is simple and atmospheric, modern and beautiful.

Four in one light source

Using four-in-one light source chip to obtain the best uniform illuminance and improve the lighting effect. High luminous efficiency, more energy saving, and cost-effective.

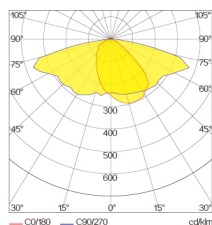
Optical controller

Photocell sensors switch the luminaire on as soon natural light falls to a certain level. It can be programmed to switch on during a storm, on a cloudy day (in critical areas) or only at nightfall so as to provide safety and comfort in public spaces.

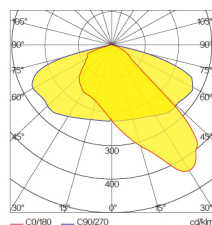
Angle opening and closing design

Gear design is adopted for lamp body sleeve, and the installation angle is adjustable.

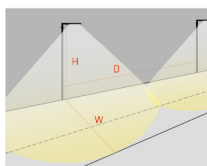
Light Distribution Display



TYPE II-M



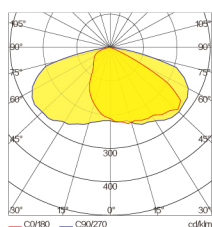
TYPE II-S



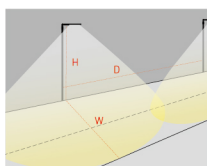
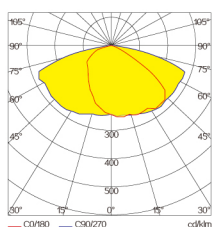
TYPE II-M: This type of light is mainly used for wide sidewalks, entrances to traffic lanes, bicycle lanes or other narrow and narrow lighting applications. The main body of the lamp holder is located on the side of the road, not in the center. The illumination width is roughly 1.75 times the lamp height.

H=The vertical height of the street light pole and the ground
W = the width of the irradiated area
D = the distance between the street lamp and the street lamp

05



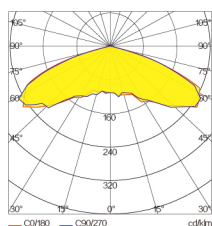
TYPE III-S



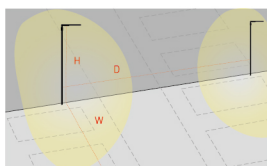
TYPE III-S: Mainly used for highways, driving lanes, parking lots and general square lighting. The main body of the lamp holder is located on the side of the road, and the lighting width is 2.75 times the height of the lamp.

H=The vertical height of the street light pole and the ground
W = the width of the irradiated area
D = the distance between the street lamp and the street lamp

06



TYPE V

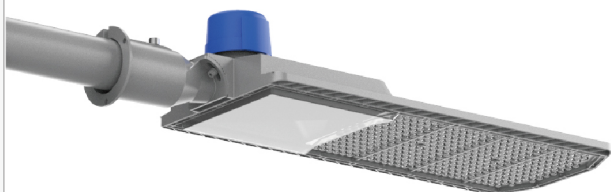


TYPE V: Mainly used for general parking lot lighting and large-scale square lighting. The lighting range is a circle, and the main body of the lamp holder is located in the center of the lighting area.

H=The vertical height of the street light pole and the ground
W = the width of the irradiated area
D = the distance between the street lamp and the street lamp

Intelligent Lighting

The lamps can be equipped with smart components and configured as smart street lamps, integrating transportation, environmental monitoring, energy management, city management and other hardware functions, which can be widely distributed to all corners of the city to help the construction of smart cities.



Control options

From simple factory-set dimming to full CMS: enhance your luminaire through intelligent, connected sensors and control systems.

Benefits of smart control

- Reduced energy consumption
- Reduced carbon footprint
- Longer luminaire life
- Lower capital, maintenance and energy costs
- Ability to collect data



Bluetooth

For on/off switching, light control and dimming



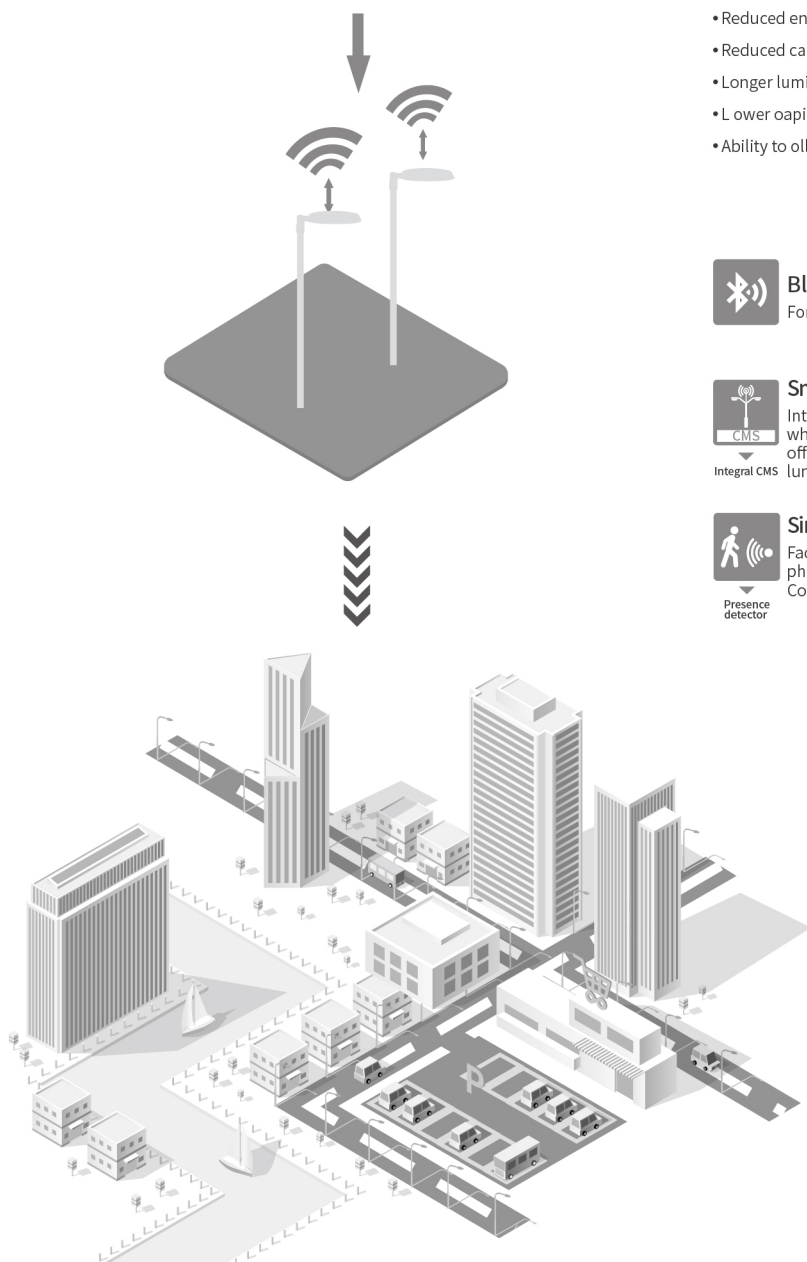
Smart control

Integral CMS: connected (or Smart) assets which use wireless communications networks, offering optimal flexibility. Control a single luminaire or group switch remotely.



Simple, stand-alone controls

Factory-set dimming, time switches, photocells and presence detectors. Control in its simplest form.



traffic

Environmental
monitoring

Traffic management

City management

The art of designing for light

The designer designed an elegant product with simple appearance and exquisite workmanship. Every detail is designed to bring power and lightness to its shape. This is a product with design, function and security.

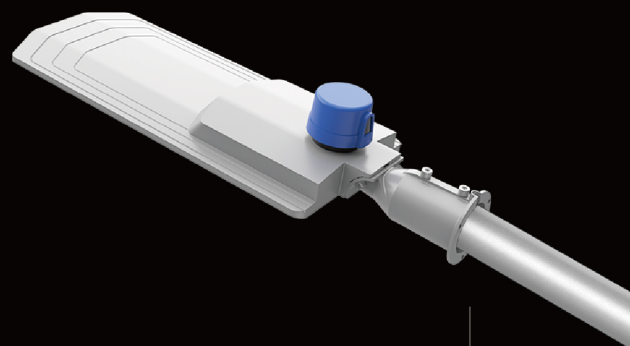
Die cast aluminum material, hot-dip galvanizing, plastic spraying, good anti-corrosion performance; Light controller can be installed to facilitate light control and other intelligent control.

The bat airfoil light distribution design is adopted to provide uniform light distribution.

Stable performance, high luminous efficiency, low luminous attenuation, long service life.

07

08





It is suitable for parking lots, parks, residential areas, industrial areas, schools, hospitals, communities and other outdoor lighting places



09



10

