

CE CB RoHS



ST35 series LED Street Light

20W~240W

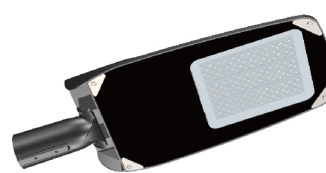
- All aluminum die-casting shell with high thermal conductivity and heat dissipation structure design, with a luminous efficiency of up to 160LM/W.
- Gear design is adopted for lamp body sleeve, and the installation angle is adjustable.
- Low energy consumption, using high-efficiency constant current drive, saving 60% energy; Equipped with overcurrent, overvoltage, lightning, and high temperature protection, fully ensuring product life and stable performance.
- Bat wing light distribution to achieve the best uniform lighting and improve the lighting effect.
- Light controller can be installed optionally to facilitate light control and other intelligent control.
- The protection level can reach IP66&IK09.



top view

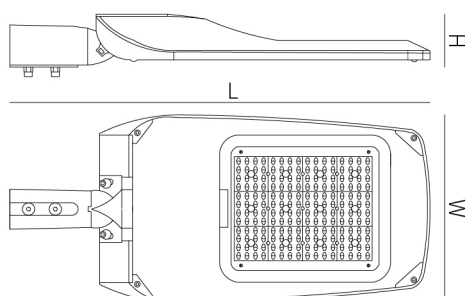


side view



bottom view

Product Number	ST35-S	ST35-M	ST35-L
Rated Power	20W-240W		
Input Voltage	100~277V AC or 12/24V DC		
LED Brand	LUMILEDS, CREE or SOUL		
Chip Type	SMD3030 or SMD5050		
Led Light Luminous	>130LM/W@SMD3030, >160LM/W@SMD5050		
Driver brand	MW, PHILIPS, INV or SOSEN		
Beam Angle	TYPE II, TYPE III or TYPE V, optional		
Control method	Regulor, 0-10V/PMW/DALI dimming, optional		
Sensor	Nema or ZHAGA, optional		
Power factor	>0.95		
Color rendering index	>70 or >80		
Frequency Range	50/60Hz		
Color Temp	3000~6500K		
Lamp body material	AL Body, PC lens and GLASS cover		
Installation diameter	Φ60mm(default), or Φ50mm		
Working Temperature	-40~55°C		
Working Humidity	10~90%		
Life/Warranty	>50,000hrs		
Surge protection	10KV or 20KV		
IP Grade	IP66		
IK Grade	IK09		
Lamp Size	561x214x88mm	679x281x90mm	714x320x90mm
Authentication	CE、CB、ENEC、ENEC+、RoHS		

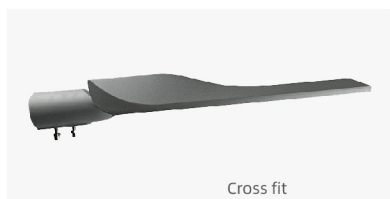


Product Size

产品型号	L	W	H
ST35-S	561	214	88
ST35-M	679	281	90
ST35-L	714	320	90

Installation method

The luminaire adopts horizontal and vertical installation, and supports angle adjustment, which can be adjusted according to different lighting environment to meet different lighting needs.



Product Display

ST33 will use stunning fixtures visually. The result is a lighting solution that enhances the richness of the lighting installation environment. Regardless of the configuration, each product in the ST33 series has the same beautiful shape, with adjustable sleeve angle installation and installation components that can be applied horizontally and vertically.

FLOWING FORM

Smooth transition regardless of mounting
Styling complements surroundings
Well hidden hardware

OPTICAL SYSTEM

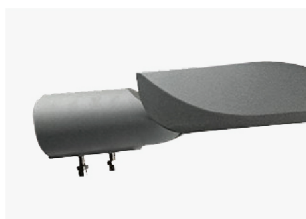
With its dense LED arrangement and precision optics, the ST30 delivers high-performance illumination and extraordinary visual comfort.

Optional optical controller

This series of lamps can be equipped with various sensors/light management systems, which can achieve functions such as photoelectric timing, dimming, remote management, and fault alarm.



Product Display



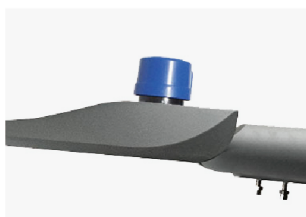
BODY

The body is made of high pressure die-cast aluminum with strong corrosion resistance. The overall modeling design is simple and atmospheric, modern and beautiful.



Four in one light source

Using four-in-one light source chip to obtain the best uniform illuminance and improve the lighting effect. High luminous efficiency, more energy saving, and cost-effective.



Optical controller

Photocell sensors switch the luminaire on as soon natural light falls to a certain level. It can be programmed to switch on during a storm, on a cloudy day (in critical areas) or only at nightfall so as to provide safety and comfort in public spaces.



Angle opening and closing design

Gear design is adopted for lamp body sleeve, and the installation angle is adjustable.



IK Degree: IK09

The degree of protection of the enclosure against harmful mechanical impact.



IP Degree: IP66

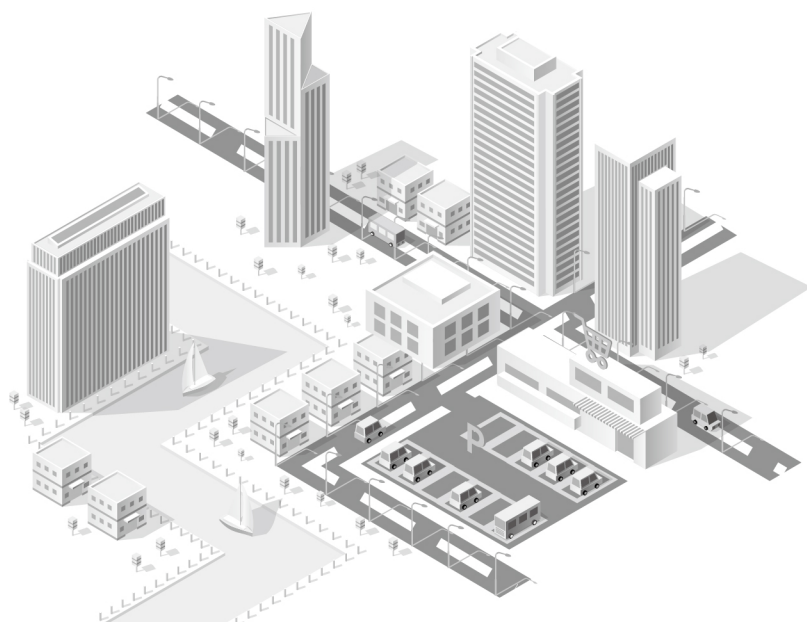
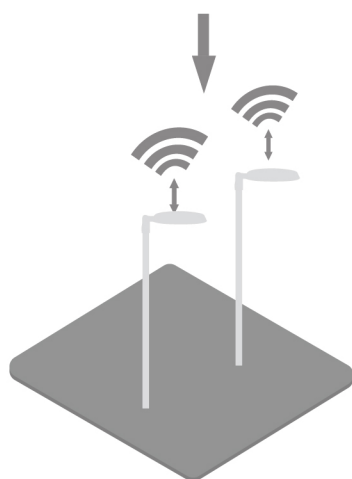
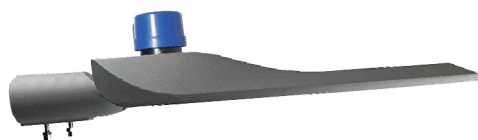
Prevent water spraying, and the water jet aiming at the equipment from any direction shall not cause damage.

03

04

Intelligent Lighting

The lamps can be equipped with smart components and configured as smart street lamps, integrating transportation, environmental monitoring, energy management, city management and other hardware functions, which can be widely distributed to all corners of the city to help the construction of smart cities.



Control options

From simple factory-set dimming to full CMS: enhance your luminaire through intelligent, connected sensors and control systems.

Benefits of smart control

- Reduced energy consumption
- Reduced carbon footprint
- Longer luminaire life
- Lower capital, maintenance and energy costs
- Ability to collect data



Bluetooth

For on/off switching, light control and dimming



Smart control

Integral CMS: connected (or Smart) assets which use wireless communications networks, offering optimal flexibility. Control a single luminaire or group switch remotely.



Simple, stand-alone controls

Factory-set dimming, time switches, photocells and presence detectors. Control in its simplest form.

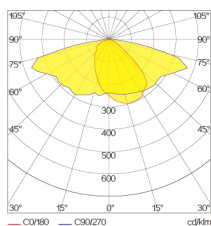
traffic

Environmental
monitoring

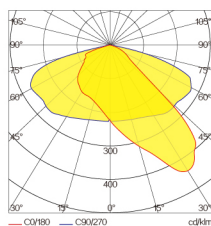
Traffic management

City management

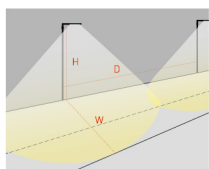
Light Distribution Display



TYPE II-M



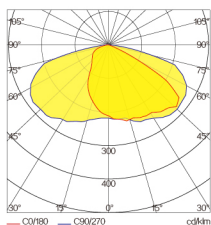
TYPE II-S



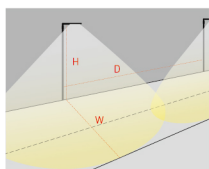
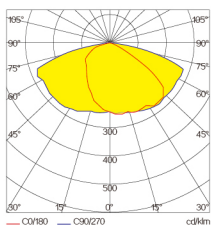
TYPE II-M: This type of light is mainly used for wide sidewalks, entrances to traffic lanes, bicycle lanes or other narrow and narrow lighting applications. The main body of the lamp holder is located on the side of the road, not in the center. The illumination width is roughly 1.75 times the lamp height.

H=The vertical height of the street light pole and the ground
W = the width of the irradiated area
D = the distance between the street lamp and the street lamp

05



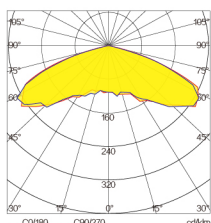
TYPE III-S



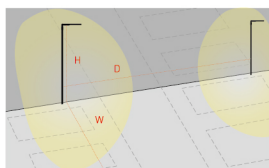
TYPE III-S: Mainly used for highways, driving lanes, parking lots and general square lighting. The main body of the lamp holder is located on the side of the road, and the lighting width is 2.75 times the height of the lamp.

H=The vertical height of the street light pole and the ground
W = the width of the irradiated area
D = the distance between the street lamp and the street lamp

06



TYPE V



TYPE V: Mainly used for general parking lot lighting and large-scale square lighting. The lighting range is a circle, and the main body of the lamp holder is located in the center of the lighting area.

H=The vertical height of the street light pole and the ground
W = the width of the irradiated area
D = the distance between the street lamp and the street lamp



It is suitable for parking lots, parks, residential areas, industrial areas, schools, hospitals, communities and other outdoor lighting places



07

08

SHANGHAI CHZ LIGHTING CO.,LTD

21 6989-8169

86 133 9137 5176 | 86 159 2122 3752

www.chz-lighting.com

Sales@chz-lighting.com

No.518 Xiangjiang Road, Jiading, Shanghai, China.