



RK500-11 Liquid Temperature Sensor



Overview

RK500-11 Liquid Temperature Sensor is used to measure the temperature of liquid medium, and is applied in the fields such as automatic meteorological station, pond or reservoir water temperature detection and etc. The sensor adopts precision thermal resistance as the sensing element, with built-in signal sampling and amplification, zero drift and temperature compensation functions, and has the characteristics of high measurement accuracy and good stability.

Features

- Real-time temperature measurement
- Good corrosion resistance, suitable for all kind of soil
- High accuracy
- Good linearity
- All stainless steel probe

Applications

- Environmental monitoring
- Weather station
- Aquaculture
- Agriculture
- Water conservancy

Technical Parameter

Item	Technical Specification
Range	-40-+80°C
Supply	12-24VDC
Accuracy	±0.5°C
Element	PT100 class A
Response Time	<1s
Output Signal	4-20mA,0-5V,RS485
Operating Temperature	-40-+80°C
Ingress Protection	IP68
Storage	10-60°C @20%-90%RH
Probe weight(unpacked)	145g
Housing material	304SS(typ.),316L(seawater)

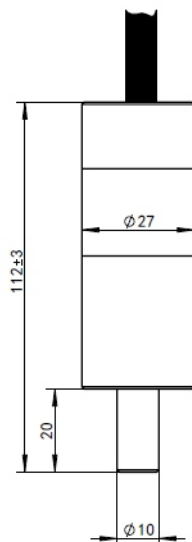


RK500-11

Liquid Temperature Sensor

Dimension

Unit:mm



Parameter Selection Table

Remark	Series	Type	Supply	Range	Output	Housing Material	Cable Length	
RK								
	500							
		11						
			A					12-24V
			X					Other
				A				-40~80℃
				X				Other
					A			4-20mA
					B			RS485
					C			0-5V
					X			Other
						A		304SS
						B		316L
							5000	Unit:(mm)
							...	Unit:(mm)

Example: RK500-11AAAA5000 Supply:12-24VDC, Range: -40~80℃, Output:4-20mA, Housing Material :304,Cable length:5m.

Revision time	Reviser	Current Version	Remarks
20250715	Echo	V5.0	