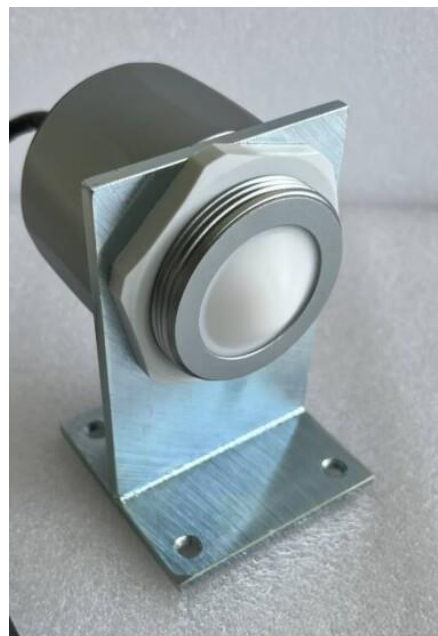


The radar water level gauge series products refer to frequency modulated continuous wave (FMCW) radar products that operate at 76-81GHz. The maximum quantity of the product can reach 65m, with a blind spot of 10cm. The radar water level gauge series products have higher working frequency, wider bandwidth, and higher measurement accuracy. The product provides the fixing method of the bracket, without the need for field wiring, making the installation convenient and simple.

FEATURES

- Millimeter wave RF chip enables more compact RF architecture, higher signal-to-noise ratio and smaller blind area.
- 5GHz working bandwidth enables the product to have higher measurement resolution and accuracy.
- The narrowest antenna beam angle is 6°, the interference in the installation environment has less impact on the instrument, and the installation is more convenient.
- Integrated lens design, compact size.
- Display control and water level gauge adopt separate design, which can be customized.
- Low power consumption operation, service life more than 3 years.
- Bluetooth debugging of mobile phones is supported to facilitate the maintenance work of field personnel.



APPLICATIONS

- River water level measurement
- Lake water level measurement
- Shallow water level measurement
- Hydrographic survey
- Environmental protection

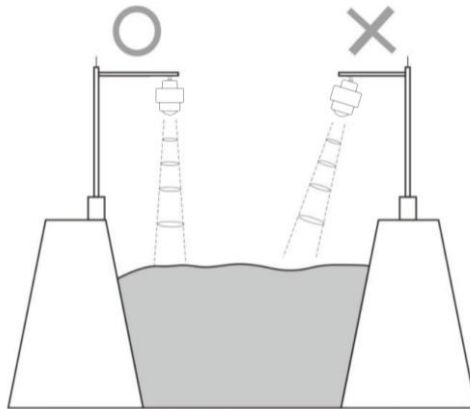
SPECIFICATIONS

Item	Technical specifications
Range	0.1-65m
Output	SDI-12
Supply Voltage	12-24VDC
Working frequency	76-81GHz
Accuracy	±1mm
Ingress Protection	IP68
Antenna Type	Lens Antenna
Operating Temperature	-30℃ ~ +75℃
Housing material	Stainless Steel
Recommended Cable	0.5mm ²
Installation Method	Bracket/Thread
Cable Entry	PG9

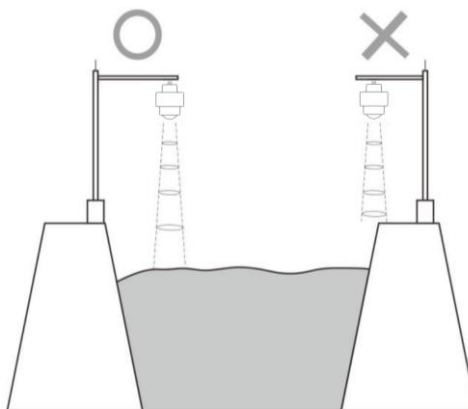
MOUNTING

Two points to pay attention to during installation: (1) Ensure that the instrument is perpendicular to the water surface; (2) Prevent the transmitting beam from illuminating interfering objects and generating false echoes. See the following points for typical working conditions:

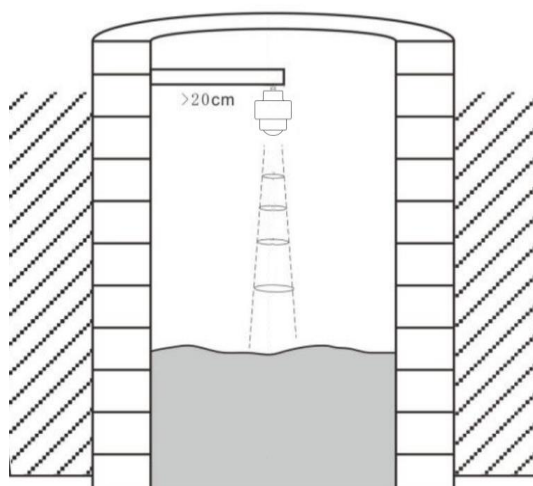
- Ensure that the water level gauge is installed perpendicular to the water surface. Inclination will weaken the amplitude of the received signal and affect the normal ranging.



- Ensure that there are no interfering objects within the beam range, such as the riverbank.

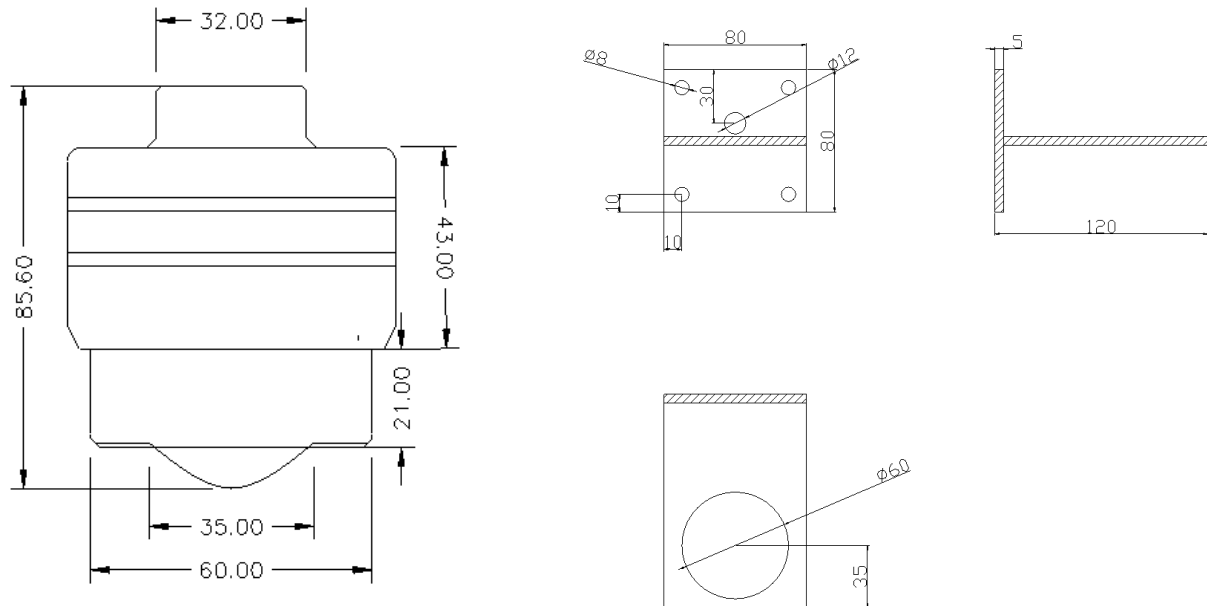


- The instrument shall be installed at least 20cm away from the side wall, and the underground pipe network shall be installed as close to the center of the well as possible, otherwise the well wall is prone to generate interference signals, affecting the measurement and judgment.



DIMENSION

Unit:mm



Complies with applicable CE directives.
Specifications subject to change without notice. Version 3.0
Copyright © 2015 Hunan Rika Electronic Tech Co.,Ltd

Hunan Rika Electronic Tech Co., Ltd

Add: 10th Bd, International Enterprise Center,
No.268 Xinxing Rd, Yuhua Dist, Changsha,
410116 Hunan, China.



+86-731-85132979



info@rikasensor.com



www.rikasensor.com