

# SPIN

 TWO EIGHT

MAKE EVERY DAY AND EVERY DISH FRESH



BONE CHINA

DINE WITH 28 CERAMICS, DINE WITH THE WORLD

  
TWO EIGHT

TWO EIGHT

Dine with 28 Ceramics, Dine with the world .





## HOSEN TWO EIGHT CERAMICS TABLEWARE

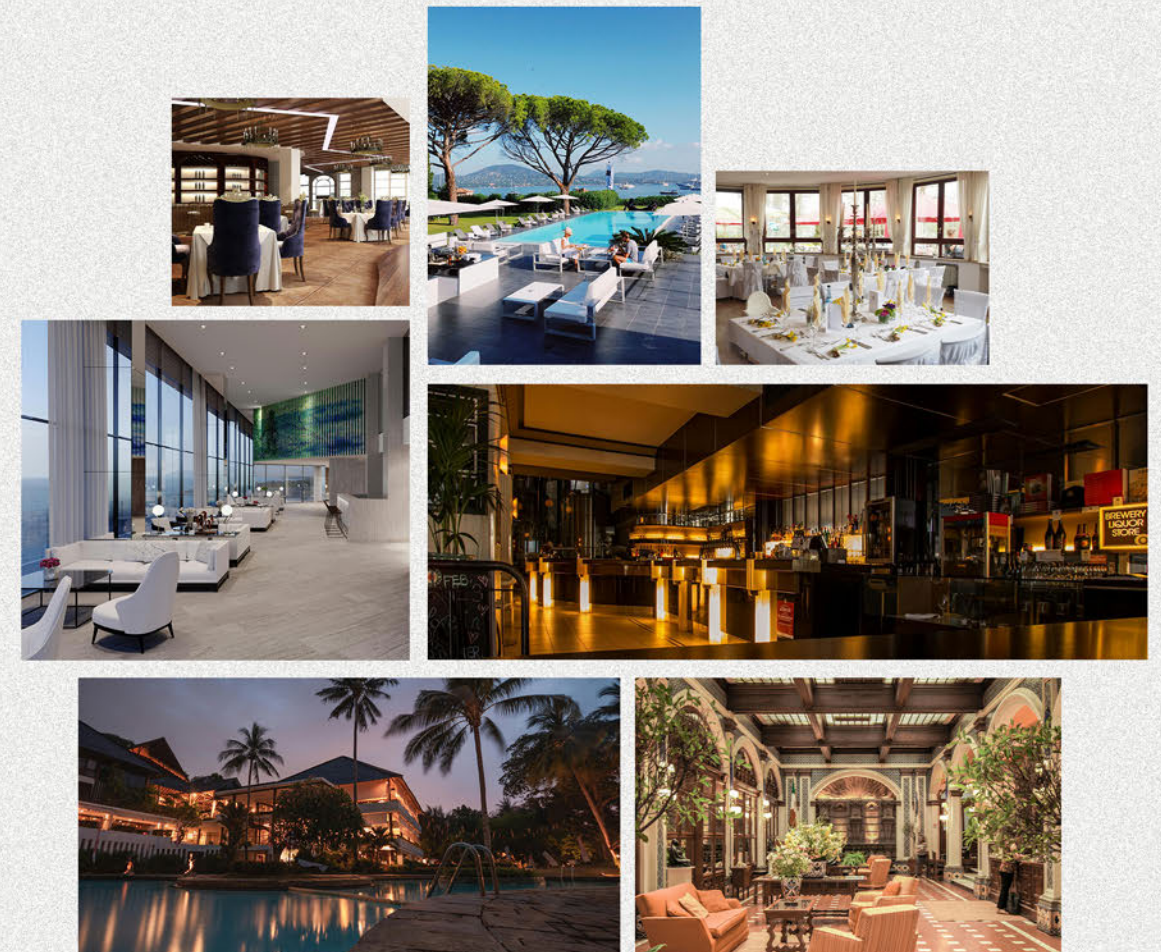
INDUSTRY CO., LTD founded in 1998, is headquartered in Chaozhou City, Guangdong Province, which has a large standardized ceramics production base with a construction area of more than 60,000 square meters and is equipped with four traditional kilns, three tunnel kilns, and two automated production lines. Enterprises integrate R&D, production, and sales.

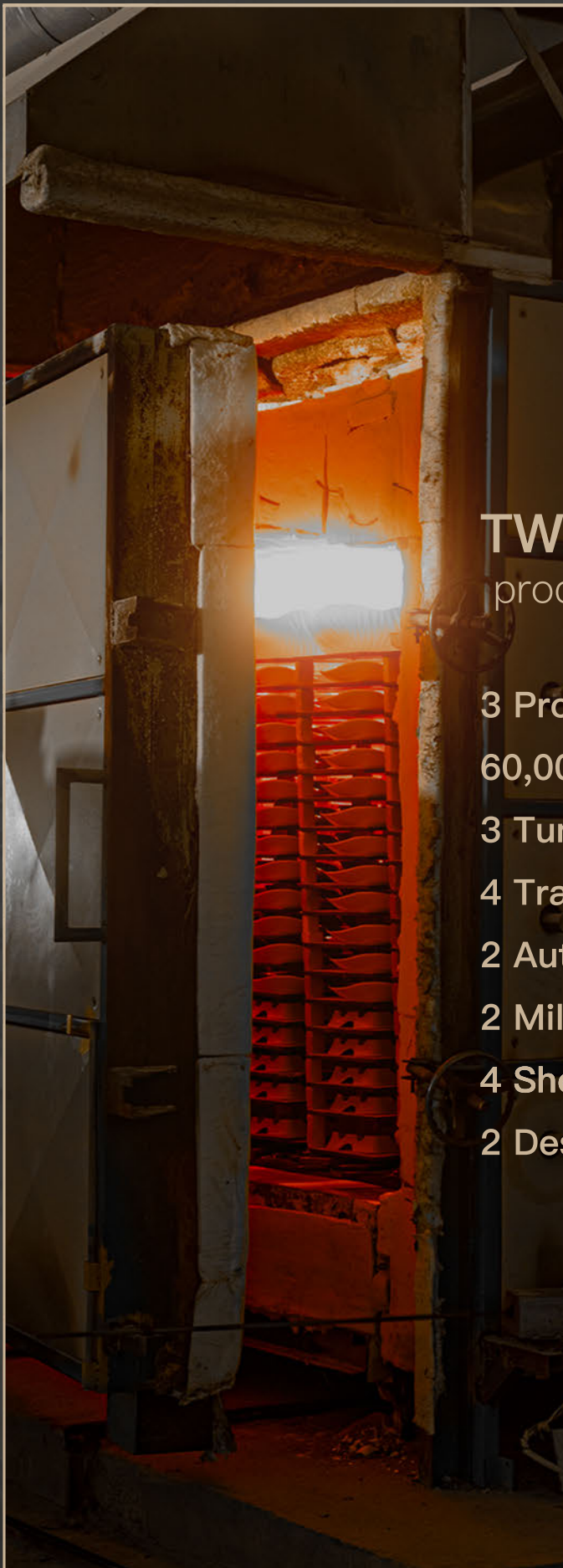
**TWO EIGHT:** a high-end hotel chain and catering brand tableware supply expert!  
Committing to providing vertical set-up tableware supply chain services for high-end hotel chains and catering brands in the Middle East and Southeast Asia.

**TWO EIGHT** shows the world a brand-new ceramic catering culture to the world and makes unremitting efforts to build hotel supplies and ceramic tableware which is the core of outstanding international brands.

**DINE WITH TWO EIGHT, DINE WITH THE WORLD.**

## BUSINESS PARTNER





**TWO EIGHT**  
production capacity

- 3 Production Bases
- 60,000+ m<sup>2</sup> Production Area
- 3 Tunnel Kilns
- 4 Traditional Kilns
- 2 Automated Production Lines
- 2 Million Pieces Per Month
- 4 Showrooms
- 2 Design Team



## BONE CHINA

Dinnerware Production Procedure

Step 1: Opening Mould

Step 2: Molding (High Pressure / Rolling / Slip Casting)

Step 3: Trimming

Step 7: Glaze Spraying

Step 4: Biscuit Firing

Step 8: Glaze Firing

Step 5: Inspection

Step 9: Inspection

Step 6: Polishing

Step 10: Finished Product

# CATALOGUE



1.Vera Jardin



2.Samite



3.Revival



4.Tansey



5.Elves



6.Spring

TWO EIGHT



## VERA JARDIN

The exquisite set of bone china dinnerware adorned with golden leaf motifs, evoking the beauty of autumn.

Each piece meal into a lavish culinary experience, immersing guests in the splendor of fall and the sophistication of fine dining.

Elevate your table setting with the timeless beauty and refined craftsmanship, it Perfect for high-end hotel dining, whether it's an intimate gourmet dinner or an opulent banquet.

**TWO EIGHT**

FOCUS ON HOSPITALITY TABLEWARE  
SINCE 1998.



**DINNER PLATE**  
HS202134  
27.8\*2.6CM



**DINNER PLATE**  
HS202135  
20.3\*1.8CM



**SOUP PLATE 9"**  
HS202143  
23\*4CM



**DEEP FISH PLATE**  
HS202136  
35.2\*25.3\*3.2CM



**SOUP BOWL**  
HS202144  
16.3\*3.4CM



**RICE BOWL**  
HS202142  
14.4\*7.1CM



**COFFEE CUP**  
HS202140  
11.8\*9.1\*5.6CM(CUP)  
HS202141  
15.5\*1.5CM(SAUCER)



**TEA POT**  
HS202137  
22.4\*9.9\*8.5CM



**SUGAR POT**  
HS202138  
10\*4.5CM



**MILK JUG**  
HS202139  
10.9\*6.2\*8.1CM



Dine with 28 Ceramics, Dine with the world

# SAMITE

Each piece captures the essence of tranquil moments amidst the bustling world, offering a perfect balance of elegance and peace.

Elevate your dining ambiance with the exquisite craftsmanship and serene beauty.

Ideal for high-end hotel dining, whether it's a quiet breakfast for one or an intimate gourmet dinner.

TWO EIGHT  
FOCUS ON HOSPITALITY TABLEWARE  
SINCE 1998.





**FLAT PLATE**  
HS202112  
30.8\*1.9CM 12"



**FLAT PLATE**  
HS202111  
26\*1.8CM 10.5"



**PLATE**  
HS202098  
30.1\*2.5CM 12"



**ICE CREAM PLATE**  
HS202130  
7.6\*4.1CM (BOWL)  
HS202131  
28\*2CM 11" (PLATE)



**PLATE**  
HS202124  
33.5\*6.1CM 13"



**SHALLOW PLATE**  
HS202097  
20.3\*2.1CM 8"



**PLATE**  
HS202123  
28.1\*5.4CM 11"



**PLATE**  
HS202113  
24\*4.8CM 9.5"



**TEA CUP**  
HS202099  
11.3\*8.6\*7.9CM (CUP)  
HS202100  
15.6\*1.8CM (SAUCER)



**TEA POT**  
HS202105  
22.4\*11.3\*14.3CM



**OVAL PLATE**  
HS202126  
46.2\*24.5\*5CM 18"



**BOWL**  
HS202121  
25.6\*8.9CM 10"  
HS202122  
30.5\*10.6CM 12"



**BOWL**  
HS202096  
11.5\*6.2CM



**ABALONE PLATE 10"**  
HS202114  
19\*10.5CM (LID)  
HS202115  
25.2\*3.8CM (PLATE)



**POT 10.5"**  
HS202127  
19.5\*9.5\*7.2CM (LID)  
HS202128  
27\*14.2\*4CM (POT)



**OVAL PLATE**  
HS202125  
41.2\*21.6\*5.1CM 16"



**RECTANGULAR PLATE**  
HS202119  
35.6\*18.2\*2.4CM 14"  
HS202120  
40.5\*21.1\*2.7CM 16"



**DISH**  
HS202132  
7\*2.5CM (DISH)  
HS202133  
16\*8\*3CM (STAND)



**PLATE LID**  
HS202116  
14.3\*1CM

**RECTANGULAR DISH**  
HS202117  
14.4\*7\*3.8CM

**PLATE STAND**  
HS202118  
18.9\*1.2CM



**SOUP TUREEN**  
HS202108  
11\*4.5CM (LID)  
HS202109  
12\*4.5CM



**DESSERT POT**  
HS202106  
10\*5CM (LID)  
HS202107  
9\*7CM



**NAPKIN DISH**  
HS202101  
19.5\*10\*2.5CM



**CHOPSTICKS STAND**  
HS202102



**SAUCE DISH**  
HS202103  
9.2\*3CM 3.5"



NEW  
ARRIVAL  
*Samite*





## REVIVAL

The luxurious set of bone china dinnerware that beautifully contrasts bold black designs with pristine white ceramic.

Each piece captures the essence of spring, evoking the sense of nature awakening and life blossoming anew.

Perfect for high-end hotel dining, whether it's an elegant brunch or a sophisticated evening service.

The Revival collection brings a dynamic energy to every table setting, inviting guests to experience the harmonious blend of modern elegance and the rejuvenating spirit of spring. Elevate your dining ambiance with the striking beauty and refined craftsmanship of the Revival collection.

### TWO EIGHT

FOCUS ON HOSPITALITY TABLEWARE  
SINCE 1998.



SHALLOW PLATE

HS183807  
29\*2.5CM 11"



SHALLOW PLATE

HS183806  
20.7\*1.8CM 8.25"



SHARK FIN CUP WITH LID

HS183820  
20.3\*4.5CM 8"



TEA POT

HS183827  
24.5\*8.5\*11.5CM



TEA CUP

HS183822  
12\*9.7\*6.3CM (CUP)  
HS183823  
14.5\*1.7CM (SAUCER )



TEA CUP

HS183836  
11.5\*9\*5.9CM 5.75"(CUP)  
HS183835  
15\*1.7CM 5.75"( SAUCER)



DISH

HS183814  
18\*9.3\*1.2CM 7"



ASHTRAY

HS183812  
7.8\*3.7CM 3"  
HS183813  
11.2\*1.9CM



SAUCE DISH

HS183817  
10\*2.5CM



TOOTHPICK HOLDER

HS183815  
5.4\*1.5CM





**SALAD PLATE**

HS183810  
21.6\*4CM 8.25"



**BOWL WITH WARMER**

HS183832  
17.7\*5.3CM



**BOWL WITH WARMER**

HS183831  
13.4\*6.5CM 4.5"



**BOWL**

HS183824  
11.7\*6.7CM 4.75"

HS183825  
10.2\*5.3CM 4.75"



**BOWL**

HS183830  
10.3\*7.6CM 4"



**BOWL**

HS183828  
7.9\*3.8CM 3"



**SNACK DISH**

HS183829  
9.6\*4CM 3"



**SOUP SPOON**

HS183816  
4.4\*2.8CM



**CHOPSTICK STAND**

HS183808  
8.5\*3.3\*1.5CM



**CHOPSTICK STAND**

HS183811  
13.3\*4.1\*1.8CM



SHALLOW PLATE  
HS194803  
20.5\*2.4CM



FLAT PLATE  
HS194801  
20.6\*1.6CM



FLAT PLATE  
HS194802  
28.6\*1.9CM



FISH PLATE  
HS194798  
36.2\*26.8\*3.5CM  
HS194799  
41\*30.7\*4CM  
HS194800  
48.5\*34.5\*4.5CM



CUP WITH COVER  
HS194807  
23.5\*1.8CM (CUP )  
HS194808  
27.8\*2CM (PLATE)



## TANSEY

The luxurious set of bone china dinnerware adorned with opulent gold leaf designs.

Each piece radiates sophistication and grandeur, transforming every meal into a lavish experience. Perfect for high-end hotel dining, whether it's a sumptuous breakfast or an exquisite dinner service.

The Tansey collection brings unparalleled elegance and brilliance to any table setting, inviting guests to indulge in the splendor and refined craftsmanship.

Elevate your dining ambiance with the exquisite charm and timeless luxury of the Tansey collection, where every detail exudes magnificence.

**TWO EIGHT**

FOCUS ON HOSPITALITY TABLEWARE  
SINCE 1998.



**BOWL**

HS194815 21.3\*5CM  
HS194816 24.1\*5.2CM  
HS194817 26.8\*6CM



**RICE BOWL**

HS194804  
11\*5CM



**CUP WITH COVER**

HS194810  
13\*5CM (CUP)  
HS194811  
17.2\*1.8CM (SOUCER)



**COFFEE CUP**

HS194812  
8.1\*5.5CM (CUP)  
HS194813  
14.6\*1.6CM (SOUCER)



**DISH**

HS194805  
8.2\*2CM



**CHOPSTICKS STAND**

HS194809  
9.5\*3.2\*1.6CM



**SPOON**

HS194806  
3.8\*14.5CM



# ELVES

The high-end set of bone china dinnerware inspired by the graceful dance of nature's spirits.

Each piece is adorned with intricate designs that celebrate the Elves and elegance of the natural world, making every meal feel vibrant and full of life.

Perfect for enhancing the dining experience in luxury hotel restaurants, whether it's an intimate gourmet dinner or an opulent banquet.

The Elves collection brings a touch of nature's splendor to your table, inviting guests to revel in the beauty and energy of the outdoors.

Elevate your dining ambiance with the refined artistry and natural charm of the Elves collection.

## TWO EIGHT

FOCUS ON HOSPITALITY TABLEWARE  
SINCE 1998.





PLATE  
HS188029  
20.7\*1.8CM 8"



PLATE  
HS188027  
21.1\*2.1CM 8.25"



PLATE  
HS188028  
28.9\*2.4CM 11"



PLATE  
HS188026  
30\*1.7CM 11.75"



SALAD PLATE  
HS188033  
21.6\*4CM 8.25"



RICE BOWL  
HS188041  
11.3\*5.9CM 4.5"



BOWL  
HS188040  
11.7\*5.2CM 4.75"



BOWL  
HS188032  
12.5\*5.5CM 4.75"

# ELVES



**TEA CUP WITH HANDLE**  
HS188043  
12\*9.7\*6.3CM (CUP)  
HS188044  
17.8\*2CM (SAUCER)



**TEA POT**  
HS188042  
24.5\*8.5\*11.5CM



**NAPKIN DISH**  
HS188037  
18\*9.3\*1.2CM



**CHOPSTICKS STAND**  
HS188031  
8.5\*3.3\*1.5CM



**CHOPSTICKS STAND**  
HS188034  
13.3\*4.1\*1.8CM



**TEA CUP SET**  
HS188064  
7.4\*2.5CM (LID)  
8.5\*5CM (BODY)  
8.8\*2.1CM (SAUCER)



**SAUCE DISH**  
HS188030  
7.5\*2.5CM



**ASHTRAY**  
HS188035  
7.8\*3.7CM (BODY)  
HS188036  
11.2\*1.9CM (SAUCER)



**SPOON**  
HS188039  
4.4\*2.8CM



**TOOTHPICK HOLDER**  
HS188038  
5.4\*7.9CM



DINE WITH 28 CERAMICS, DINE WITH THE WORLD

# SPRING

This bone china dinnerware, adorned with simply white patterns.

Each piece captures the enchanting beauty of spring, with motifs that seem to dance like graceful spirits.

The collection brings the rejuvenating essence of spring to every meal, inviting guests to savor the delightful harmony of nature and fine dining.

Perfect for high-end hotel dining, whether it's a refined afternoon tea or an elegant dinner service.

## TWO EIGHT

FOCUS ON HOSPITALITY TABLEWARE  
SINCE 1998.





**PLATE**  
HS188048  
20.7\*1.8CM 8"



**PLATE**  
HS188046  
21.1\*2.1CM 8.25"



**PLATE**  
HS188047  
28.9\*2.4CM 11"



**PLATE**  
HS192171  
28.3\*2.1CM 11"



**SALAD PLAET**  
HS188052  
21.6\*4CM 8.25"



**RICE BOWL**  
HS188060  
11.3\*5.9CM 4.5"



**BOWL**  
HS188059  
11.7\*5.2CM 4.75"



**BOWL**  
HS188051  
12.5\*5.5CM 4.75"



**TEA CUP WITH HANDLE**  
HS188062  
12\*9.7\*6.3CM (CUP)  
HS188063  
17.8\*2CM (SAUCER)



**TEA POT**  
HS188061  
24.5\*8.5\*11.5CM



**NAPKIN DISH**  
HS188056  
18\*9.3\*1.2CM



**CHOPSTICKS STAND**  
HS188050  
8.5\*3.3\*1.5CM



**CHOPSTICKS STAND**  
HS188053  
13.3\*4.1\*1.8CM



**SPOON**  
HS188058  
4.4\*2.8CM



**SAUCE DISH**  
HS188049  
7.5\*2.5CM



**ASHTRAY**  
HS188054  
7.8\*3.7CM (BODY)  
HS188055  
11.2\*1.9CM (SAUCER)



## SPIRIT

The forest awakens with the dawn, birds singing,  
leaves rustling in the gentle breeze.

Sunlight filters through the canopy, casting a golden glow.

Flowers bloom, and the air is filled with the scent of pine and earth.  
Nature's vibrant energy radiates, inspiring awe and renewal.

The inspiration of bone china design come from  
every existence in nature, in the earth.

## Contact

### EMAIL

[hosen-19@28ceramics.com](mailto:hosen-19@28ceramics.com)  
[haoxin-2@28ceramics.com](mailto:haoxin-2@28ceramics.com)

### PHONE

0086 181 2795 5755  
0086 189 2421 5255