



# LED Front Desk Series

Indoor Flexible Screen

The LED reception screen is a curved LED display table that blends technology and style, making it an ideal solution for modern advertising. Designed specifically for displaying signage and dynamic video, it features advanced electronics and supports content customization. The LED reception screen is perfectly suited for corporate receptions, trade show booths, stage DJ tables, conferences, and events.

## Flexible Soft Module

Module surface is fire-resistant and flame retardant design ensures greater safety. The entire view is very smooth with seamless stitching.

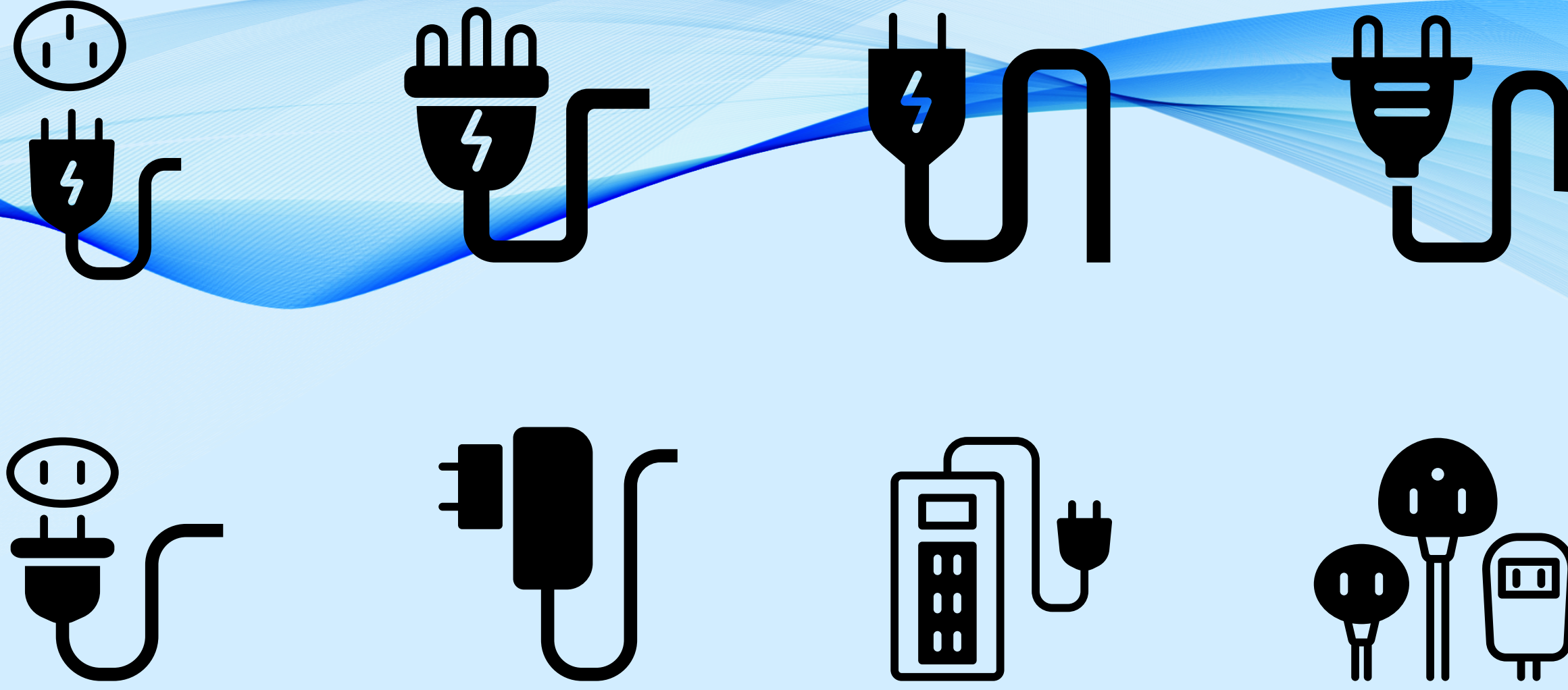


## GOB Protection

The GOB process provides protection against impacts, water, and static electricity. Repeated movement will not cause any damage to the screen surface.

## Plug and Play

Various standard sockets are available to meet the needs of customers in different regions. No complicated wiring or professional debugging required, one main power cable and one main network cable, plug and play.

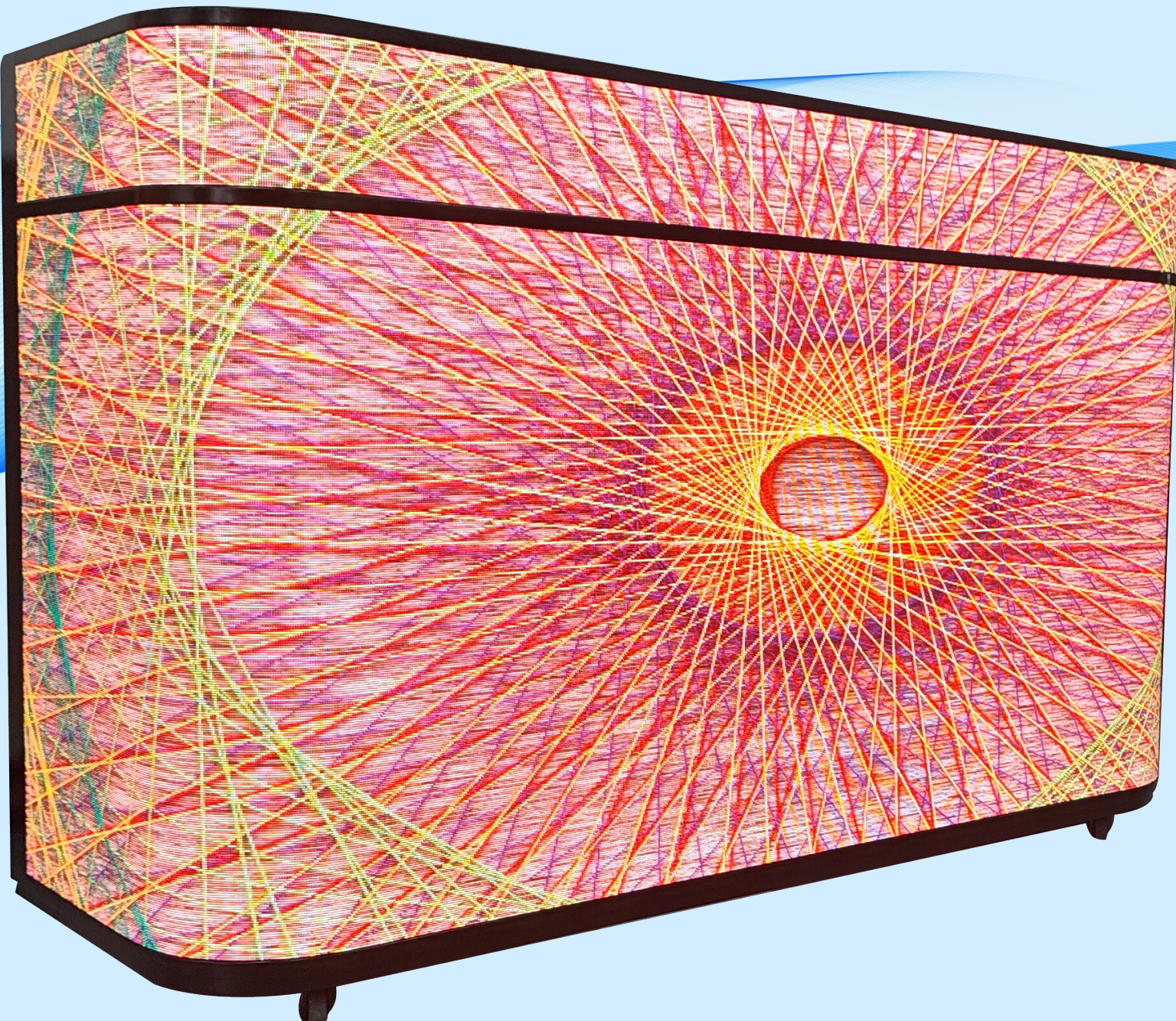


## Customized Sizes

The standard size 1065x1100mm and 1680x1068mm, you can also customize the size based on module size 320x160mm.

## Full Front Maintenance

The front-maintenance design allows for quick removal and installation of modules from the front using magnetic tools, saving space and time.

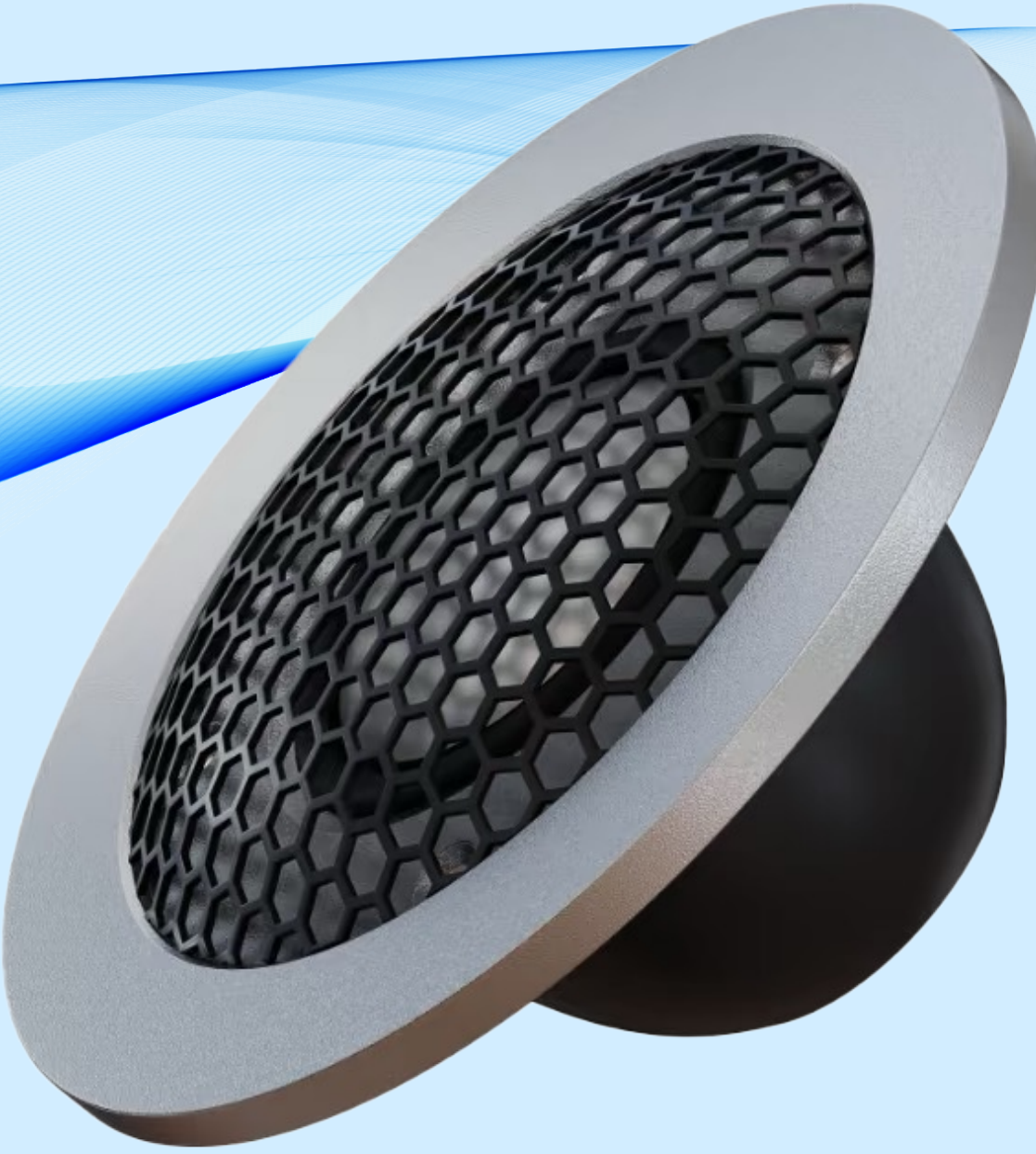


## Screen Movable Wheels and Flight Case Package

Packed in a flight case, it is impact-resistant, waterproof and insulating to ensure the safety of the product during transportation.

## Built-in Small Speaker

The mixing effect can be monitored in real time without the need for external speakers, greatly simplifying the equipment setup process.



## Parameters

| Model                           | P1.8 GOB                | P2.5 GOB          | P1.8 GOB               | P2.5 GOB               |
|---------------------------------|-------------------------|-------------------|------------------------|------------------------|
| Pixel Pitch(mm)                 | 1.86                    | 2.5               | 1.86                   | 2.5                    |
| Pixel Density                   | 288,906                 | 160,000           | 288,906                | 160,000                |
| Pixel Configuration             | SMD1212                 | SMD1515           | SMD1212                | SMD1515                |
| Scan                            | 1/43                    | 1/32              | 1/43                   | 1/32                   |
| Module Arrangement / Pcs        | 8 x 6                   | 8 x 6             | 6 x 6                  | 6 x 6                  |
| Cabinet Screen Size (W x H x D) | 1675x 1100x 585mm       | 1675x 1100x 585mm | 1 065 x 1100 x 585 m m | 1 065 x 1100 x 585 m m |
| Displaying Size (W x H)         | 2560x 960mm             | 2560x 960mm       | 1920x 960mm            | 1920x 960mm            |
| Weight                          | 127KG                   | 127KG             | 97KG                   | 97KG                   |
| Module Dimension                | 320x160mm / 1.05x0.52ft |                   |                        |                        |
| Brightness (nits)               | 600                     |                   |                        |                        |
| Material                        | Iron                    |                   |                        |                        |
| Grey Scale (bit)                | 12-16                   |                   |                        |                        |
| Refresh Rate (HZ)               | 3840Hz                  |                   |                        |                        |
| Power Con. (Max / Avg)          | 600/200W                |                   |                        |                        |
| Service Access                  | Front Service           |                   |                        |                        |
| IP Rating                       | IP43                    |                   |                        |                        |
| Input Voltage (AC)              | AC 110-240V 50/60Hz     |                   |                        |                        |
| Operation System                | Novastar                |                   |                        |                        |
| Operation Temperature           | -20 ℃ to 60 ℃           |                   |                        |                        |
| Operation Humidity              | 10% to 85%              |                   |                        |                        |

\* Specifications and photos are subject to change without prior notice.