

NovaLCT

V5.6.1



Release Notes

Contents

Contents i

1 Update Instructions 1

 1.1 Online Update 1

 1.2 Local Update 1

2 Newly Supported Chips 1

3 New Features 1

 3.1 Newly Supported Device 1

 3.2 Screen Configuration 2

 3.2.1 Smart Matching of Firmware Package from the Cloud and Updating Receiving Card 2

4 Improvements 4

 4.1 Screen Configuration 4

 4.1.1 6-LED Mode Option for Virtual Mode 4

 4.2 Program Update 4

 4.3 Multimedia Player Login 5

5 Bug Fixes 6

 5.1 Smart settings 6

 5.2 Gamma Adjustment 6

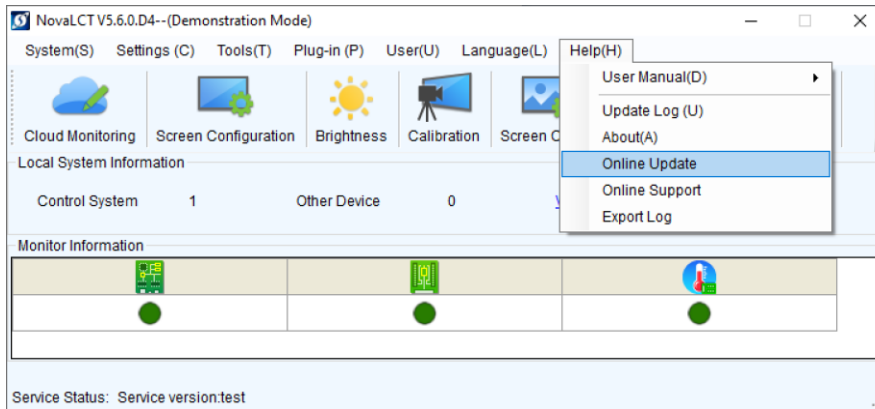
 5.3 Calibration 6

 5.4 Test Tool 6

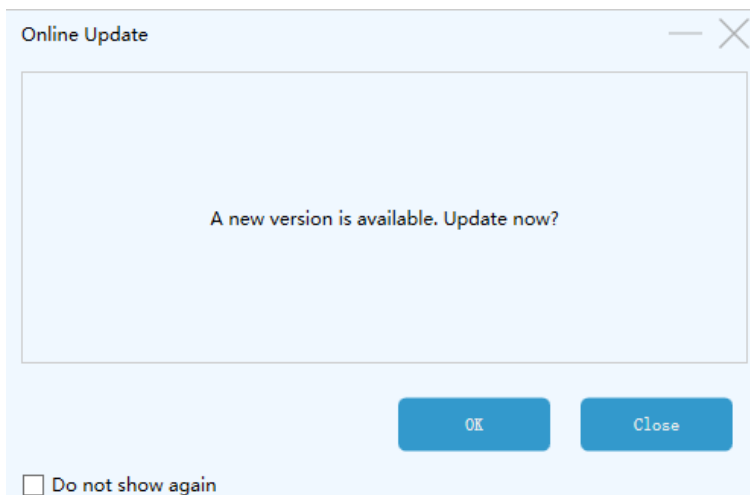
1 Update Instructions

1.1 Online Update

Step 1 From the menu bar, choose **Help > Online Update**.



Step 2 Click **OK**.



1.2 Local Update

Step 1 Visit the "Downloads" page on the [NovaStar website](#) and download the NovaLCT V5.6.1 installation package.

Step 2 Double-click to open the package and proceed with the installation.

2 Newly Supported Chips

The following chips are now supported:

SM16208, ICND1065L, CFD655, C8365, DP3367S, HX8932.

3 New Features

3.1 Newly Supported Device

The AD20 multimedia player is now supported. Users can log in through Media Player Login to access its features

3.2 Screen Configuration

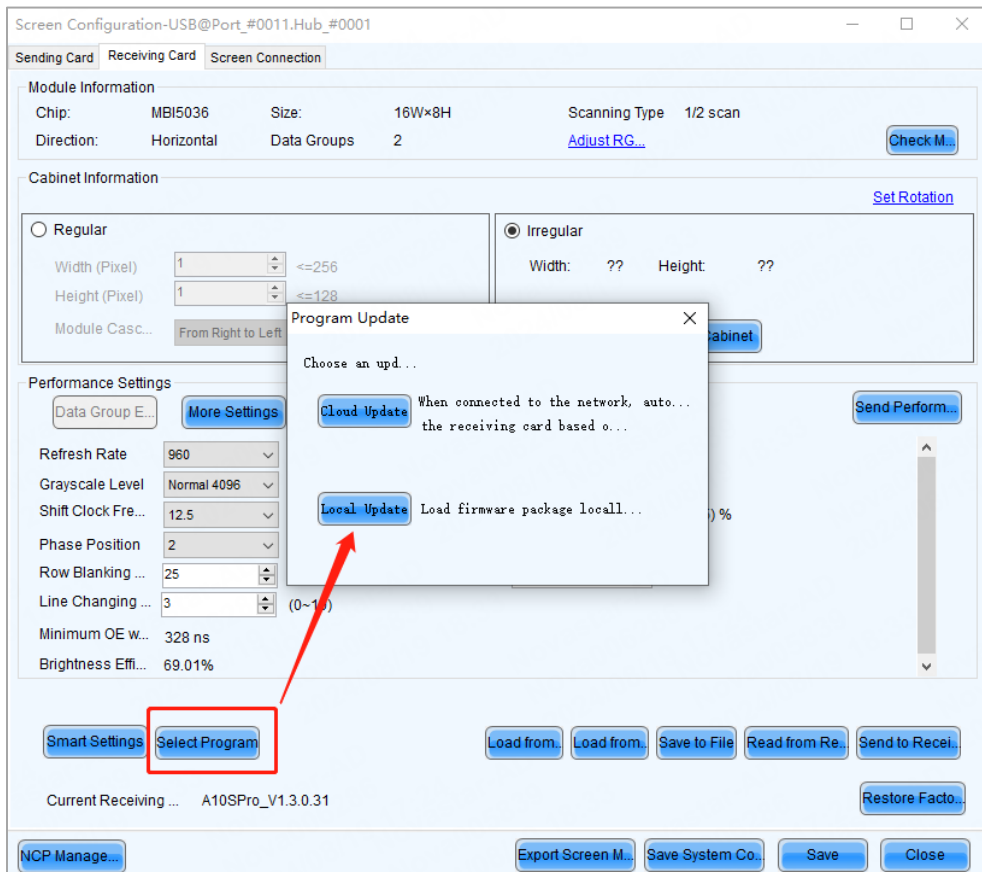
3.2.1 Smart Matching of Firmware Package from the Cloud and Updating Receiving Card

Reason for Change

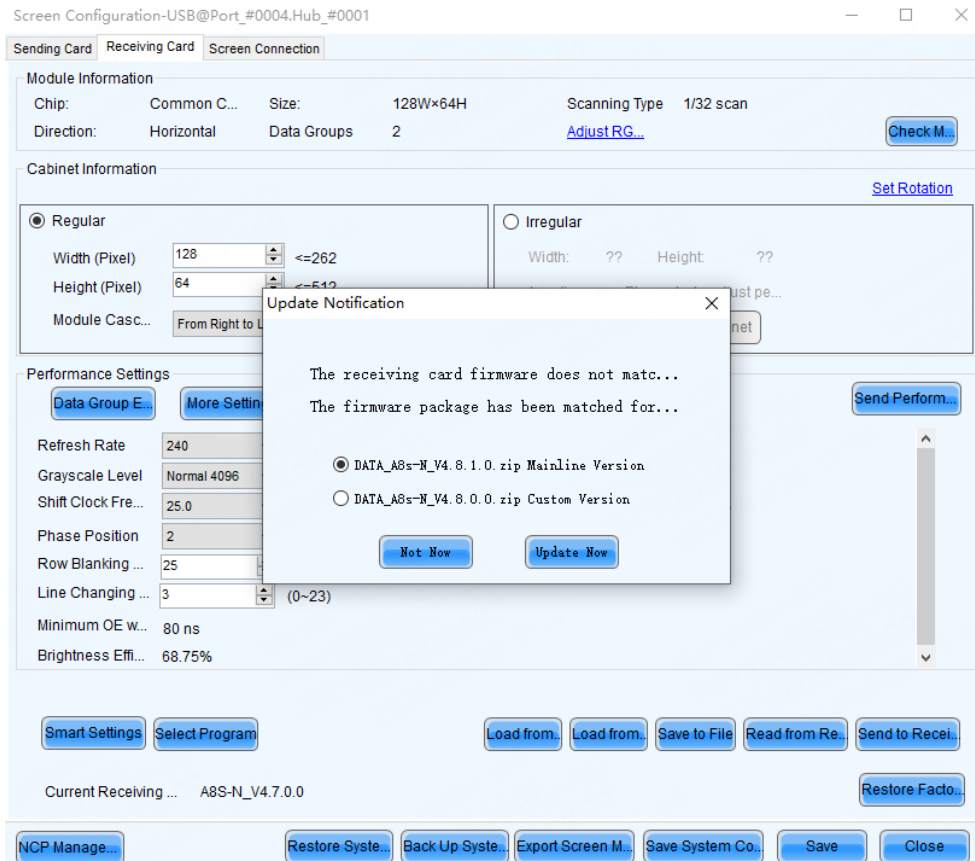
To ensure optimal display performance, update the appropriate firmware based on the receiving card configuration. This ensures that the receiving card settings and firmware are properly matched.

Function Descriptions

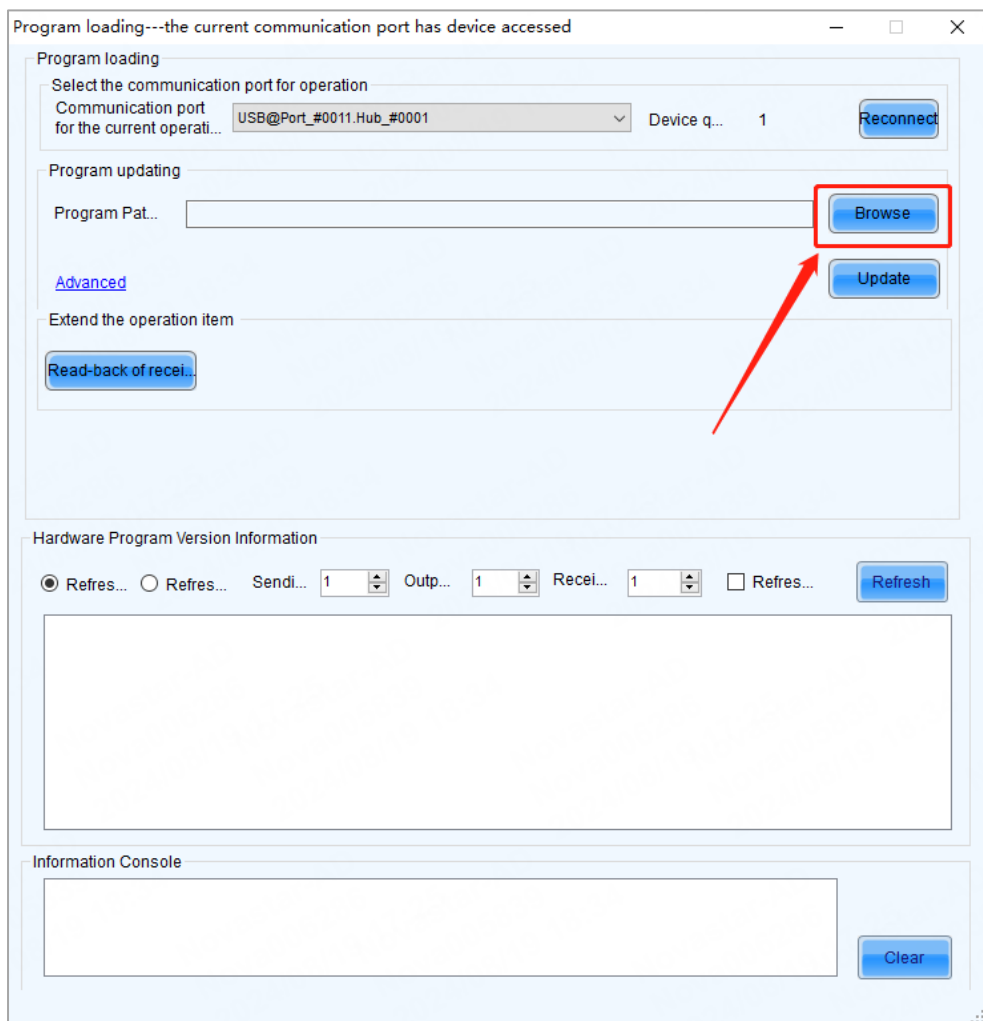
Two update methods are available: cloud update and local update:



1. Cloud Update: Automatically matches the firmware package from the cloud based on the current configuration and updates the receiving card accordingly.



2. Local Update: Loads local firmware package and updates the receiving card.



4 Improvements

4.1 Screen Configuration

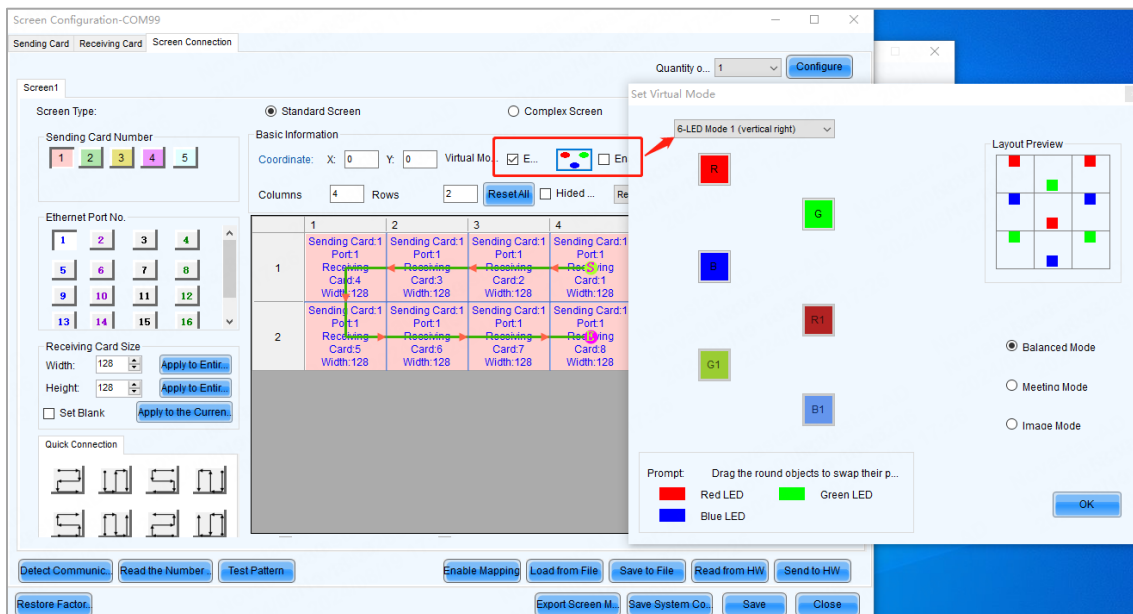
4.1.1 6-LED Mode Option for Virtual Mode

Reason for Optimization

To accommodate 6-LED sub-pixel modules, supports virtual mode settings.

Function Descriptions

Provides four directional options for the 6-LED mode (including vertical right, vertical left, horizontal up, and horizontal down), with support for drag-and-drop layout adjustments.



4.2 Program Update

Reason for Optimization

An integrated firmware package for HUB type receiving cards (DH and MRV series) has been released. It includes the programs for various models of receiving cards. Users can now use a single package to update multiple receiving card models, simplifying the process and improving efficiency.

Function Descriptions

When the integrated package for receiving cards is loaded, NovaLCT automatically matches the program package based on the receiving card model and the chip type selected by the user. As shown in the screenshot below, the match is successful:

Update Program

Integrated Package

Integrated ... Group_HUB75E_V1.2.1.0.zip

Select Chip

Driver IC: C8325

Browse

Decodin... d for decoding

Browse

Program P... DATA_MRV416_V4.9.0.0

☒ Au...

Update

Cancel

If the automatic match is not successful, users can manually select any program package and update the receiving card accordingly.

Update Program

Integrated Package

Integrated ... Group_HUB320_V1.0.0.0.zip

Select Chip

Driver IC: Please select

Browse

Decodin... Please select

Browse

Program P... DATA_NV3210_V1.0.0.0

☐ Au...

	Integrated Package
<input checked="" type="checkbox"/>	DATA_NV3210_V1.0.0.0
<input type="checkbox"/>	DATA_MRV532_V1.0.0.0
<input type="checkbox"/>	DATA_NV3210_V1.0.0.17.B2
<input type="checkbox"/>	DATA_MRV532_V1.0.0.17.B2
<input type="checkbox"/>	DATA_NV3210_V1.0.0.16.B2
<input type="checkbox"/>	DATA_NV3210_V1.0.0.15.B2

Update

Cancel

Select a send mode

☒ All Receiving Cards

☐ Specified Receiving Card

Sending Card

1

Ethernet Port

1

Receiving Card

1

OK

Cancel

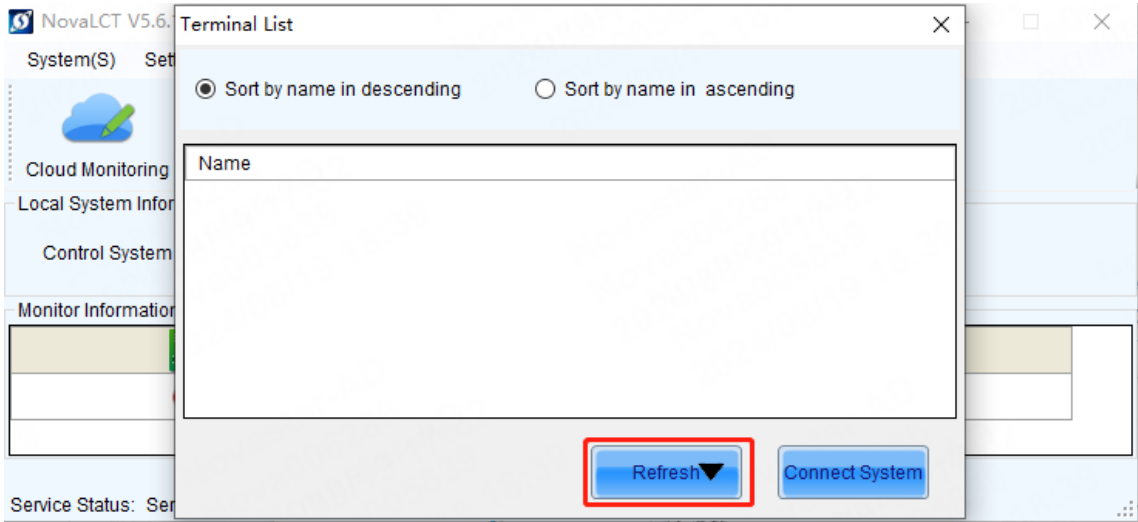
Specified broadcast data operating tips:

Broadcast corresponding values: sending card(256); Et...

4.3 Multimedia Player Login

Function Descriptions

The multimedia player login process has been improved to automatically reconnect to the service when refreshing the terminal, ensuring devices are discovered and connected properly.



5 Bug Fixes

5.1 Smart settings

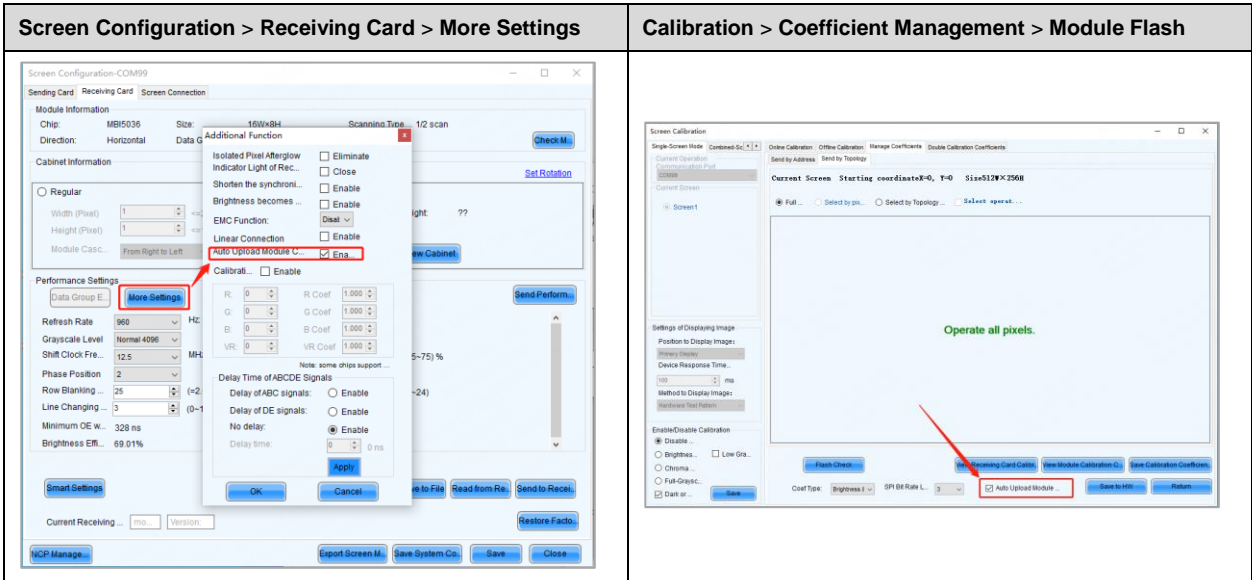
Fixed the issue where NovaLCT would freeze after modifying the chip registers for the CFD555B chip in the smart settings and then opening the configuration file.

5.2 Gamma Adjustment

Fixed display abnormalities caused by the new gamma algorithm on screens using ICND1063, CNS7263, and DP3368 ICs.

5.3 Calibration

Fixed the issue where the option **Auto Upload Module Calibration Coef** was not selectable in the following two interfaces:



5.4 Test Tool

1. Fixed the issue where the Test Tool would show a completely white screen when extending the display.
2. Fixed the issue where the Test Tool could not display test patterns when logging in as

multimedia player.

When logging in as multimedia player, NovaLCT will default to the old version of the Test Tool to ensure the test pattern displays correctly.



Copyright © 2024 Xi'an NovaStar Tech Co., Ltd. All Rights Reserved.

No part of this document may be copied, reproduced, extracted or transmitted in any form or by any means without the prior written consent of Xi'an NovaStar Tech Co., Ltd.

Trademark

 is a trademark of Xi'an NovaStar Tech Co., Ltd.

Statement

Thank you for choosing NovaStar's product. This document is intended to help you understand and use the product. For accuracy and reliability, NovaStar may make improvements and/or changes to this document at any time and without notice. If you experience any problems in use or have any suggestions, please contact us via the contact information given in this document. We will do our best to solve any issues, as well as evaluate and implement any suggestions.

Official website
www.novastar.tech

Technical support
support@novastar.tech