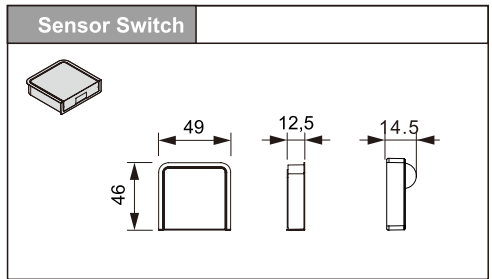
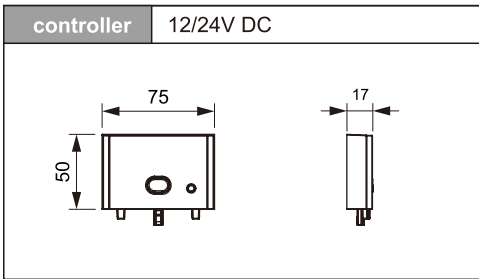
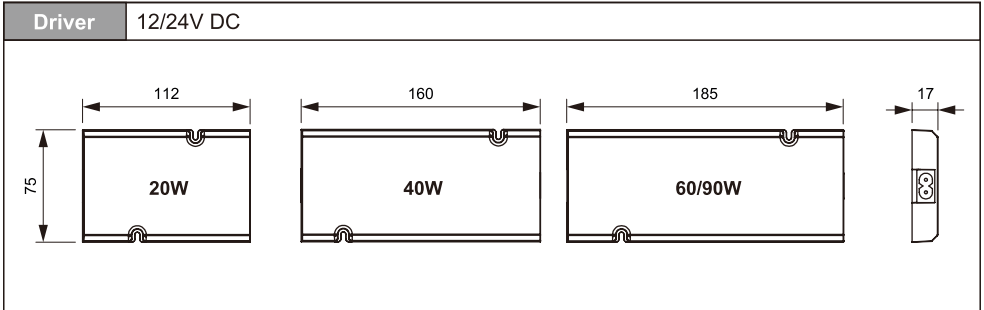
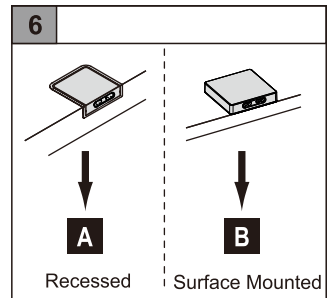
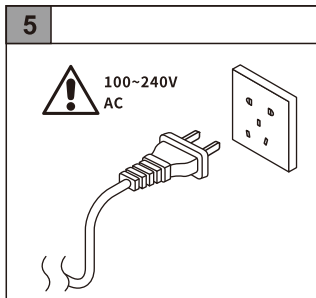
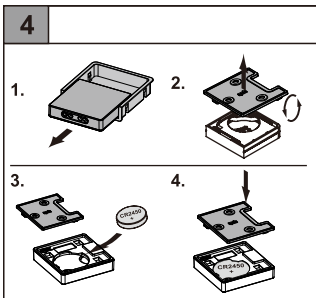
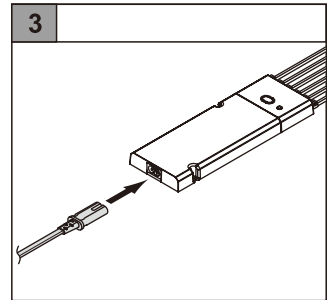
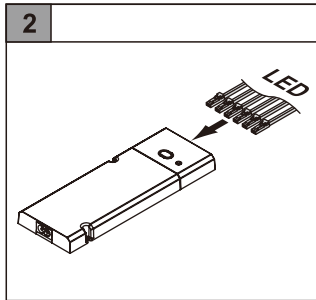
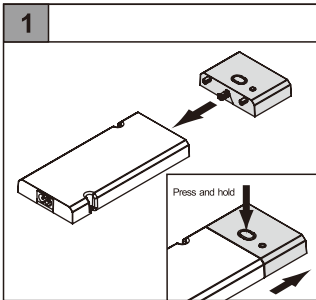


BLE5.0 Asynchronous Wireless Controller

Dimensions:



Connection:



Wireless sensor installation:

A Recessed installation

1

2

3

4

Dimensions: $45 \pm 0,1$, $R = 6$, $11,5 \pm 0,1$, $47,4 \pm 0,1$

B Surface Mounted installation


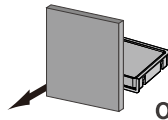
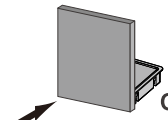
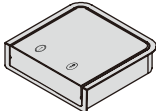

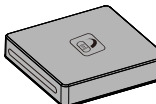
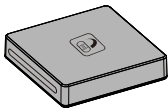
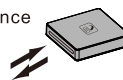
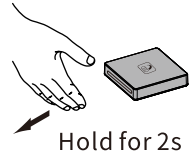


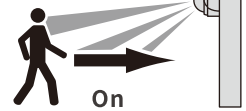
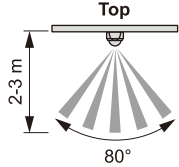

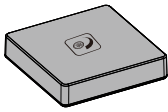
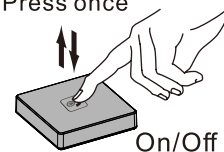

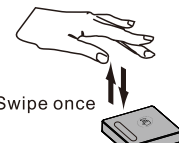

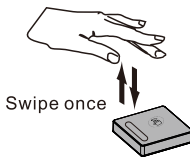
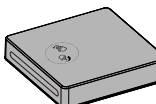




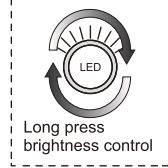
1

Screw installation

Double-sided tape installation

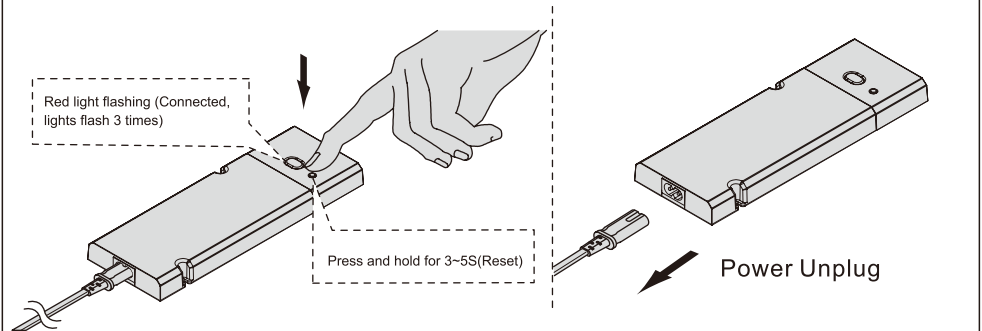
Dimensions: $15,00$, $25,00$, $23,5-26,5\text{mm}$, $9-12\text{mm}$, $5-8\text{mm}$

Wireless sensor function description :

Door sensor	Distance range:0-12cm
  On  Off	
Dimming& CCT variable sensor	Press once
  Control color temperature  Control brightness	
Side IR sensor	Distance range:3-12cm
On/Off   Swipe once  Hold for 2s  Brightness control	
PIR sensor	
  On  Top 2-3 m 80°  Top 1-2 m 0-3 m	
Touch sensor	
  Press once On/Off  Press and hold  Brightness control!	
Front IR sensor	Distance range:3-12cm
  Swipe once  Hover  Brightness control	
Side IR-Touch sensor	Distance range:3-12cm
  On/Off  Press once On/Off  Long press brightness control	

Controller match code:

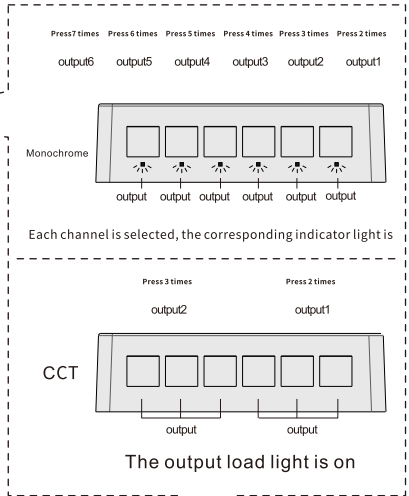
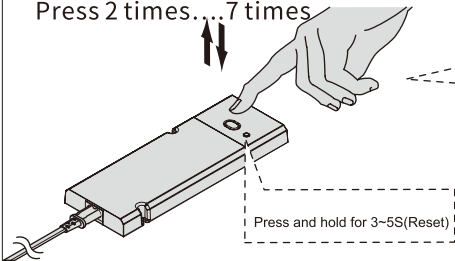
1



2

①

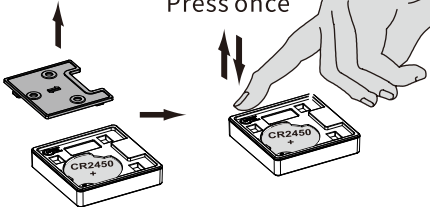
Press 2 times...7 times



Please finish matching within 20s

②

Press once



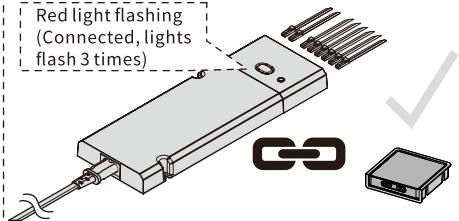
You can only match the same type of door sensor after matching one door sensor, Or it will cause unsuccessful matching. Use the same type of sensor and try again.



Scan the code to view the operation manual

③

Red light flashing (Connected, lights flash 3 times)



5 Sensor Max