

<https://www.ry-elereley.com>

RMC-L/606DD/10/5-60

  
Certification number :  
2023000303000021

  
Certification number :  
ICR Polska/V/C/HD230501

  
Certification number :  
TNR0HSRY551



The image shows a black solid state relay module with orange terminal blocks. It features two input terminals (Input 3 and Input 4) and two output terminals (Output 1 and Output 2). The module is labeled with 'RY-ELE', 'RMC-606DD', 'Input: 3-32VDC', 'Output: 6A/5-60VDC', 'IEC: 61984', 'NO ZARYS', and 'Made in China'.

RMC-L/606DD/10/5-60, including RMC-L/606DD relay and RMC-606DD black base with push-in wiring for mounting in 3.5mm universal On the rail, 1 normally open contact, input: 3-32VDC, output: 2A/5-60VDC

Characteristics

- The withstand voltage of the medium can reach 4000VAC, and the insulation resistance is 1000MΩ
- With finger protection function
- With relay puller, lock and prevent falling off, easy to replace
- Built-in protection circuit to achieve power-on indication, line protection, and extended relay transmission Input voltage range and other functions
- Low power consumption and easy to use

Order specifications

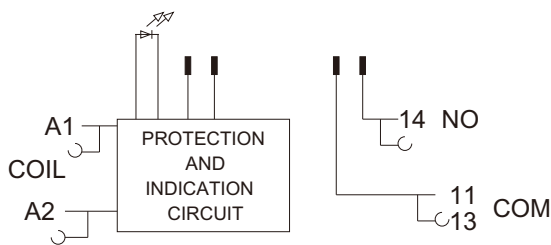
Order number	RMC-L/606DD/10/5-60
Packing Units	100 pcs
Minimum order quantity	100 pcs
Unit weight (including packaging)	Approx. 5.0 g
Unit weight (without packaging)	/
Origin	WZ

<https://www.ry-elereley.com>

Performance parameters

Contact form	1NO
Control voltage	3-32VDC
Control the current	6-15mA
Turn off the voltage	1VDC
Reverse voltage	32VDC
Load voltage	DD:5-60VDC
Load current	6A
Instantaneous voltage	220VDC
On-state depressurization	≤1.2VDC
On-off time	≤1m/s
Off-state leakage current	≤3mA
The medium is pressure-resistant	≥1500VAC
Insulation resistance	100MΩ(500VDC)
Ambient temperature	-30~80℃
Lead-out form	Plug-in / PCB mount type
Encapsulation	Molded type

Wiring diagram



**note :**

Before installation and use, please carefully check whether the model specifications of the solid state relay match the actual use conditions.  
Pay attention to proper wiring:  
①The load side and the control side cannot be reversed  
②The polarity of the power supply "+" and "-" at the control end cannot be reversed.

RMC-L/606DD/10/5-60-Solid state relay module

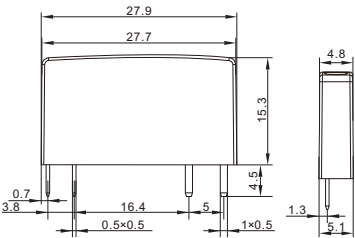
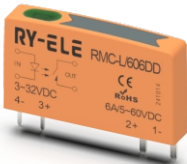


<https://www.ry-elereley.com>

Matching base

RMC-L/606DD-Solid state relays

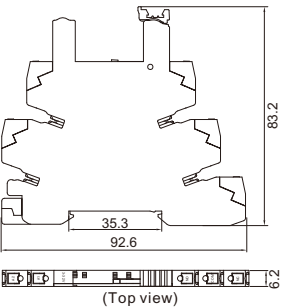
Outline drawing



**i** Maximum current carrying capacity: 6 A

RMC-606DD-Push-in wiring

Outline drawing



**i** Maximum current carrying capacity: 6 A

<https://www.ry-elereley.com>

RMC-L/602DD/10/5-60

 Certification number : 2023000303000021

 Certification number : ICR Polska/V/C/HD230501

 Certification number : TNR0HSRY551



RY-ELE<sup>®</sup> RMC-602DD  
Input: 3-32VDC  
Output: 2A/5-60VDC

Input 4 (-)    Output 1 (-)  
Input 3 (+)    Output 2 (+)

IN    OUT

CE IEC:61984    NO 24V T125    Made in China

RMC-L/602DD/10/5-60, including RMC-L/602DD relay and RMC-602DD black base with push-in wiring for mounting on 3.5mm universal On the rail, 1 normally open contact, input: 3-32VDC, output: 2A/5-60VDC

Characteristics

- The withstand voltage of the medium can reach 4000VAC, and the insulation resistance is 1000MΩ
- With finger protection function
- With relay puller, lock and prevent falling off, easy to replace
- Built-in protection circuit to achieve power-on indication, line protection, and extended relay transmission Input voltage range and other functions
- Low power consumption and easy to use

Order specifications

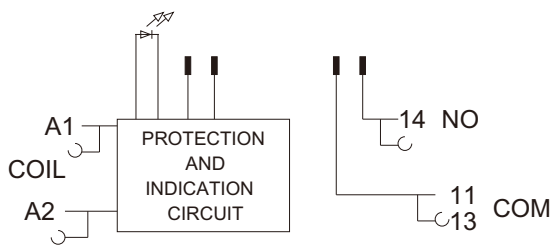
Order number	RMC-L/602DD/10/5-60
Packing Units	100 pcs
Minimum order quantity	100 pcs
Unit weight (including packaging)	Approx. 5.0 g
Unit weight (without packaging)	/
Origin	WZ

<https://www.ry-elereley.com>

Performance parameters

Contact form	1NO
Control voltage	3-32VDC
Control the current	6-15mA
Turn off the voltage	1VDC
Reverse voltage	32VDC
Load voltage	DD:5-60VDC
Load current	2A
Instantaneous voltage	220VDC
On-state depressurization	≤1.2VDC
On-off time	≤1m/s
Off-state leakage current	≤3mA
The medium is pressure-resistant	≥1500VAC
Insulation resistance	100MΩ(500VDC)
Ambient temperature	-30~80℃
Lead-out form	Plug-in / PCB mount type
Encapsulation	Molded type

Wiring diagram



**note :**

Before installation and use, please carefully check whether the model specifications of the solid state relay match the actual use conditions.  
Pay attention to proper wiring:  
①The load side and the control side cannot be reversed  
②The polarity of the power supply "+" and "-" at the control end cannot be reversed.

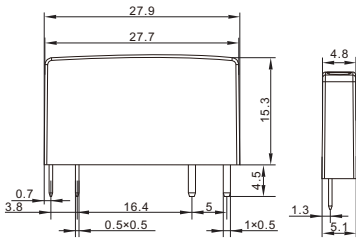
<https://www.ry-elereley.com>

Matching base

RMC-L/602DD-Solid state relays



Outline drawing

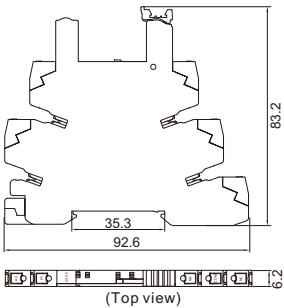


Maximum current carrying capacity: 6 A

RMC-602DD-Push-in wiring

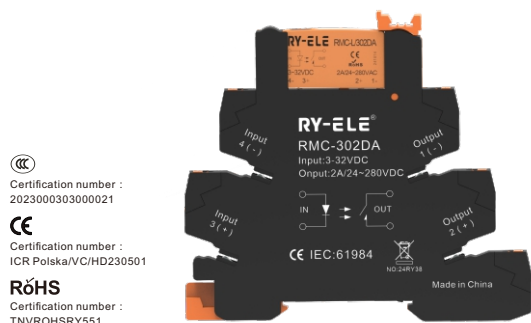


Outline drawing



Maximum current carrying capacity: 6 A

## RMC-L/302DA/10/24-280



RMC-L/302DA/10/24-280, including RMC-L/302DA relay and RMC-302DA black base with push-in wiring for mounting on 3.5mm universal On the rail, 1 normally open contact, input: 3-32VDC, output: 2A/24-280VAC

## Characteristics

- The withstand voltage of the medium can reach 4000VAC, and the insulation resistance is 1000MΩ
- With finger protection function
- With relay puller, lock and prevent falling off, easy to replace
- Built-in protection circuit to achieve power-on indication, line protection, and extended relay transmission  
Input voltage range and other functions
- Low power consumption and easy to use

## Order specifications

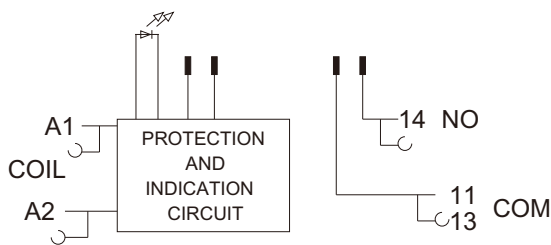
Order number	RMC-L/302DA/10/24-280
Packing Units	100 pcs
Minimum order quantity	100 pcs
Unit weight (including packaging)	Approx. 5.0 g
Unit weight (without packaging)	/
Origin	WZ

<https://www.ry-elereley.com>

Performance parameters

Contact form	1NO
Control voltage	3-32VDC
Control the current	6-15mA
Turn off the voltage	1VDC
Reverse voltage	32VDC
Load voltage	DA:24-280VAC
Load current	2A
Instantaneous voltage	900VAC
On-state depressurization	≤1.6VDC
On-off time	≤1m/s
Off-state leakage current	≤1mA
The medium is pressure-resistant	≥1500VAC
Insulation resistance	100MΩ(500VDC)
Ambient temperature	-30~80℃
Lead-out form	Plug-in / PCB mount type
Encapsulation	Molded type

Wiring diagram



**note :**

Before installation and use, please carefully check whether the model specifications of the solid state relay match the actual use conditions.  
Pay attention to proper wiring:  
①The load side and the control side cannot be reversed  
②The polarity of the power supply "+" and "-" at the control end cannot be reversed.



RMC-L/302DA/10/24-280-Solid state relay module



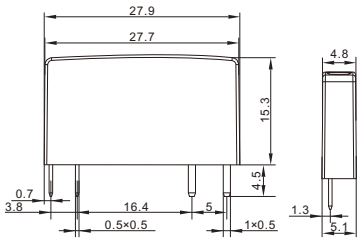
<https://www.ry-elereley.com>

Matching base

RMC-L/302DA-Solid state relays



Outline drawing

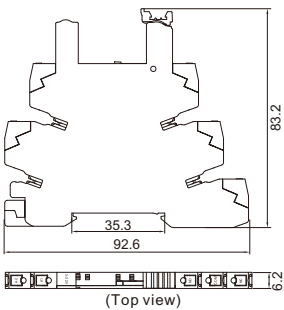


**i** Maximum current carrying capacity: 6 A

RMC-302DA-Push-in wiring



Outline drawing



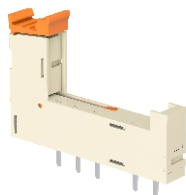
**i** Maximum current carrying capacity: 6 A

<https://www.ry-elereley.com>

Optional accessories

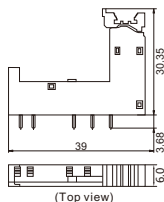
41F-1Z-A-PCB Board Soldering

PCB board soldering base, beige soldering footholder, can be equipped with marker plate 41F-M/M1



Maximum current carrying capacity: 6 A

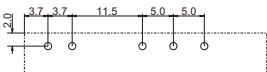
Outline drawing



Wiring diagram

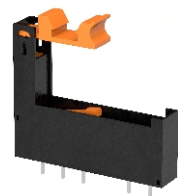


PCB cut-out size



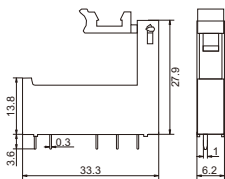
41F-1Z-A1-PCB board soldering

PCB soldering base, black soldering base, can be equipped with marker plate 41F-M/M1



Maximum current carrying capacity: 6 A

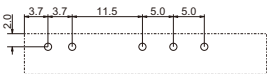
Outline drawing



Wiring diagram

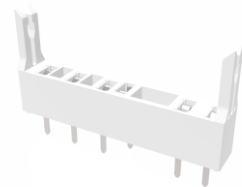


PCB cut-out size



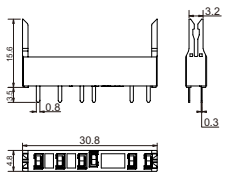
41F-1Z-A2-PCB board soldering

PCB board soldering base, white soldering foot seat



Maximum current carrying capacity: 6 A

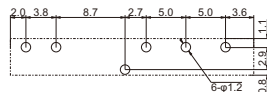
Outline drawing



Wiring diagram



PCB cut-out size



<https://www.ry-elrelay.com>

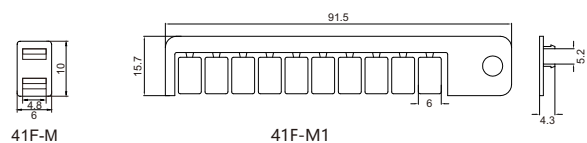
Optional accessories

41F-M/M1-Marker



10-digit marker plate, which can be cut and used to mark the line

Outline drawing

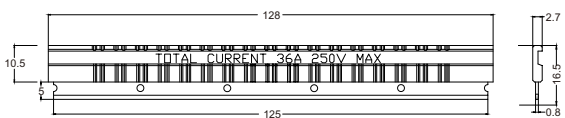


41F-H1-20 position plug-in connecting strip



20-position plug-in strip, length 123mm, color: blue

Outline drawing

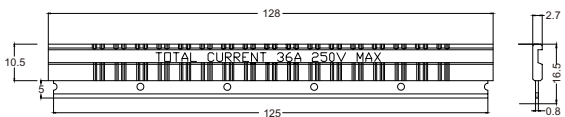


41F-H1R-20-bit plug-in connector



20-position plug-in connector, length 123mm, color: red

Outline drawing



<https://www.ry-elrelay.com>

Optional accessories

41F-H1B-20 Position Plug-in Connecting Strip

20-position plug-in strip, length 123mm, color: black



Outline drawing

