



STAR IMAGING EQUIPMENT SUPPLIER

DR X-Ray /C-arm/Mammography

SHANGHAI RO-CHAIN MEDICAL CO.,LTD

Address: Room 207, Building 1, Kangqiao Road 787, Pudong New District, Shanghai, China

Tel: 0086-21-58055329 Fax: 0086-21-58055330

Mobile(WhatsApp):0086-13248293519

E-mail: Export@ro-chainmed.com

Official website: www.ro-chainmed.com

Portable Mobile X-ray Machine

Model No. RC-PX01 / RC-PX02 / RC-PX03



(5.6KW&8KW use this Vertical type touch screen)



✓ Can be widely used for human limbs checking and diagnosing, especially used in hospital room, ambulance, disaster relief, emergency medical treatment, sports events, and charity organizations etc

✓ **Main features:**

Simple trolley type, horizontal screen 10.4 inch touch screen.
Domestic tube, X-ray generator, 17"*17" wired flat panel detector, Laptop computer Dell brand 15.6inch

✓ Power: 5KW&5.6KW&8KW
Voltage: AC220V \pm 10%; AC110V \pm 10%
kV Range: 40~110kV
mA Range: 20~100mA
mAs Range: 0.2-200mAs
Working Frequency: \geq 40kHz
Exposure time: 0.01S~4S
Focus: 0.6 mm / 1.8 mm



Model No. RC-LT01

(*Optional luxury trolley has Laptop computer stand and FPD box)

Mobile digital X-ray machine

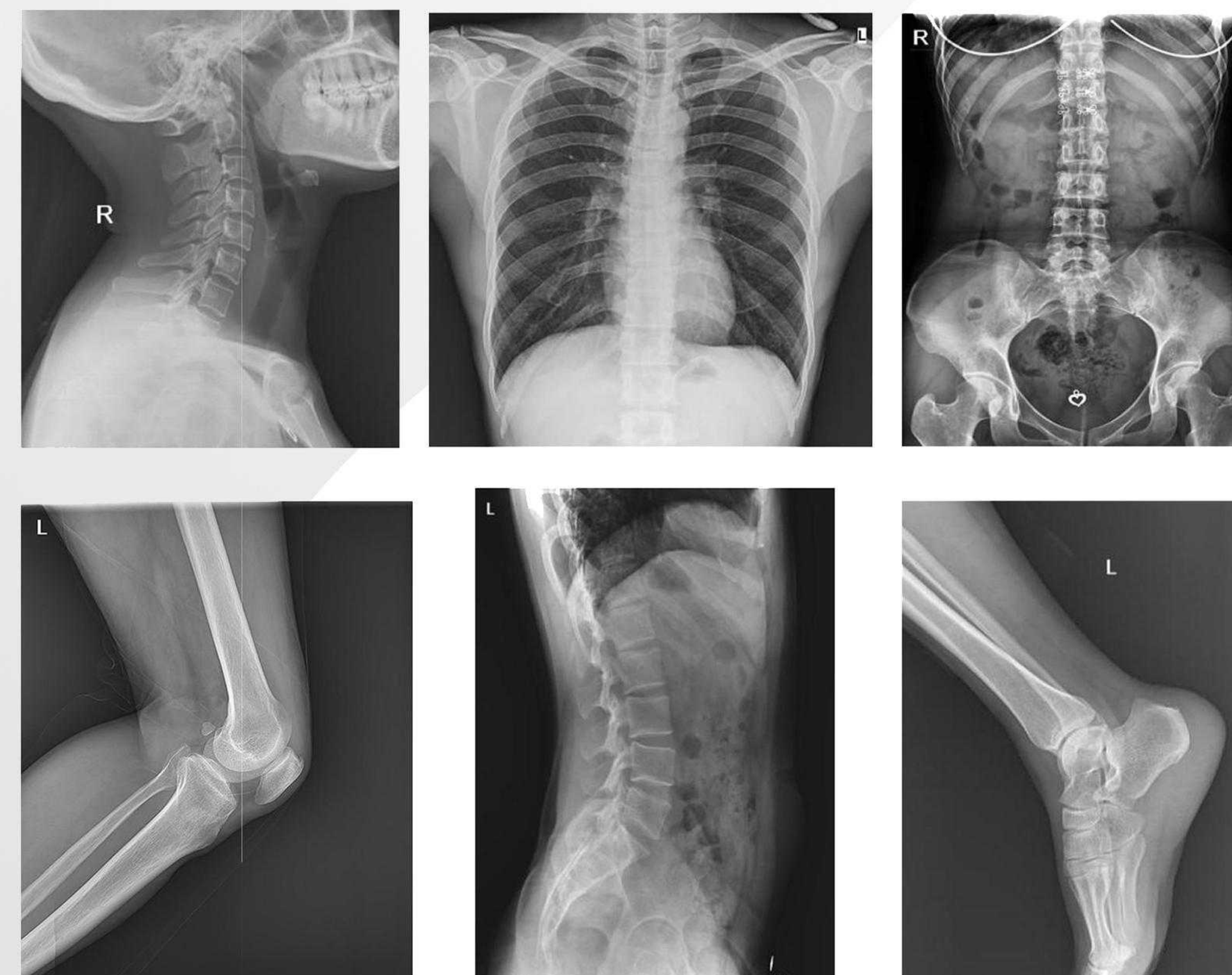
Model No. RC-MDR01 / RC-MDR02 / RC-MDR03

- ✓ The mobile DR is small in size & light in weight, and the device can reach any place where it is needed. It is suitable for isolating the ward, especially the ICU, Emergency, Isolation area intensive bedside filming to avoid patient movement.



Model:	RC-MDR01	RC-MDR02	RC-MDR03
Power:	20kW	20kW	32kW
Voltage:	AC220V±10%	AC220V±10%	AC220V±10%
kV Range:	40~125kV	40~125kV	40~125kV
mA Range:	10~200mA	10~320mA	10~400mA
mAs Range:	0.5-320mAs	0.5-320mAs	0.32-400mAs
Working Frequency:	≥100kHz	≥100kHz	≥100kHz
Exposure time:	0.002S~6.3S	0.002S~6.3S	0.002S~6.3S
Focus:	0.6 mm/1.2 mm	0.6 mm/1.2 mm	1.0 mm/2.0 mm

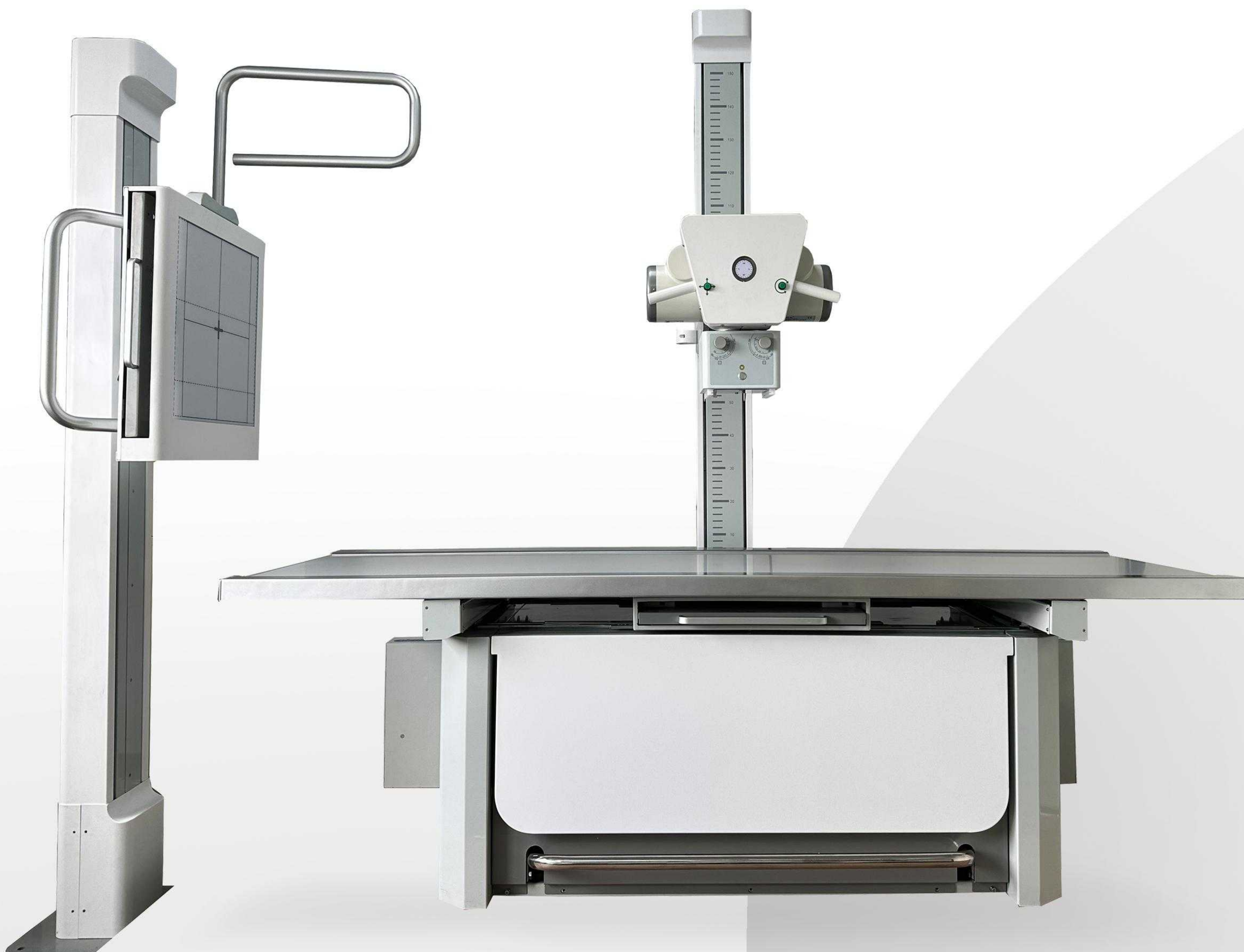
Model:	Venu1717X
Dimension:	460mmx460mmx15mm
X-ray Energy:	40-150kV
Scintillator:	CsI:TI
Pixel Size:	139um
Fill Factor:	70%
Effective Array:	3072x3072
Effective Area (HxV):	427mm×427mm
Spatial Resolution:	Min.3.4 lp/mm
Image Transfer:	Gigabit Ethernet



Double Columns Floor-mounted type Digital DR system

Model No. RC-DDX01(DR, 50KW, 630MA) / RC-DDX01(DR, 65KW, 800MA)

- Floor-mounted Digital X-ray Radiography System adopts floor-mounted table and wall stands. Its smart design, flexible movement, easy operation and high working efficiency provide more imaging positions. It is a high-end digital radiography device with wide range of applications, which could perform routine imaging of human head, chest, abdomen, lumbar vertebra and limbs with PA, LAT and clinostatism in hospitals at all levels.



Model	RC-DDX01 Series			
Power Output	32kW	50kW	65kW	80kW
Current	10-400mA	10-630mA	10-800mA	10-1000mA
Voltage	40kV-125kV	40kV-150kV	40kV-150kV	40kV-150kV
mAs	0.1-400mAs	0.1-630mAs	0.1-800mAs	0.1-1000mAs
Exposure time	1-6300ms	1-6300ms	1-6300ms	1-6300ms
Focus Size	1.0/2.0	0.6/1.2	0.6/1.2	0.6/1.2
Detector Type	Flat Panel Detector			
Vision Size	17*17"/14*17"			
A/D Conversion	16 bits			
Spatia Resolution	3.6lp/mm			
Pixel Size	3072X3072			



C-spine



Chest



L-spine



Pelvis



Hands



Foot



Knee joint



L-spine

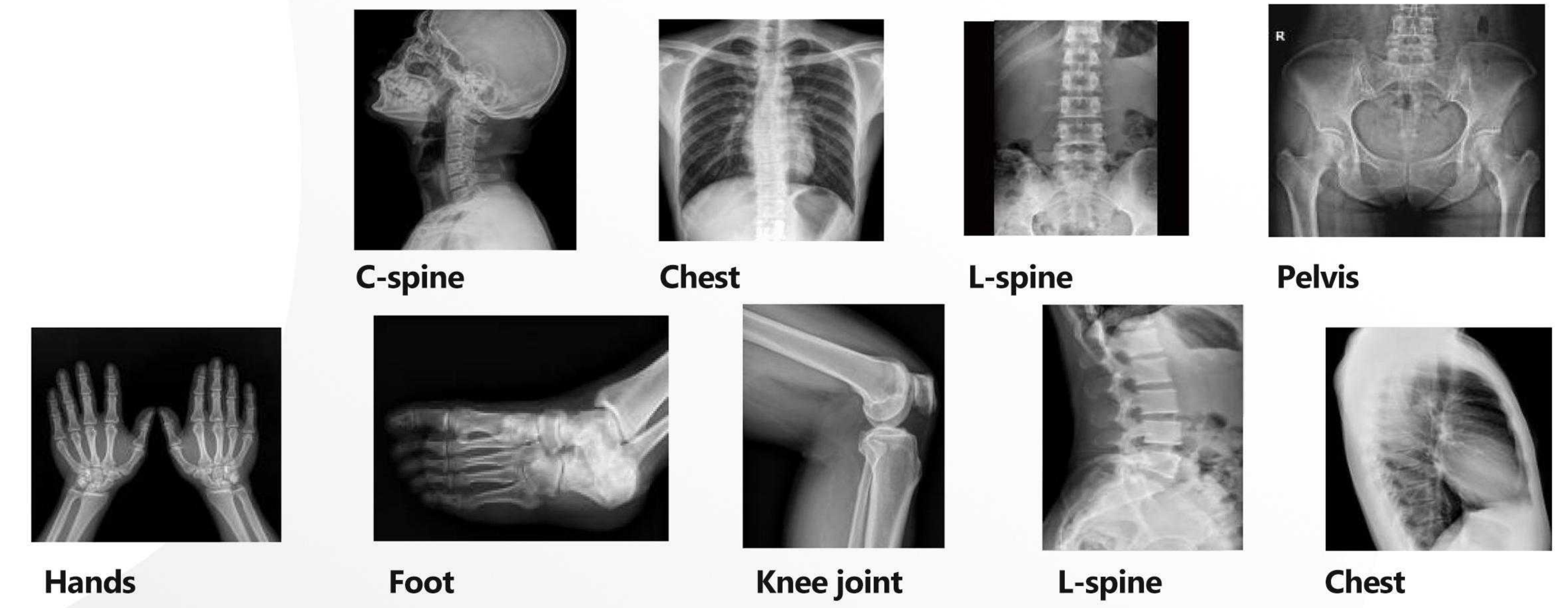


Chest

Double Columns Floor-mounted type Digital DR system

Model No. RC-DDX02 (DR, 50KW, 630MA) / RC-DDX02 (DR, 65KW, 800MA)

✓ Touch screen Floor-mounted Digital X-ray Radiography System adopts floor-mounted table and wall stands. Its smart design, flexible movement, easy operation and high working efficiency provide more imaging positions. It is a high-end digital radiography device with wide range of applications, which could perform routine imaging of human head, chest, abdomen, lumbar vertebra and limbs with PA, LAT and clinostatism in hospitals at all levels.

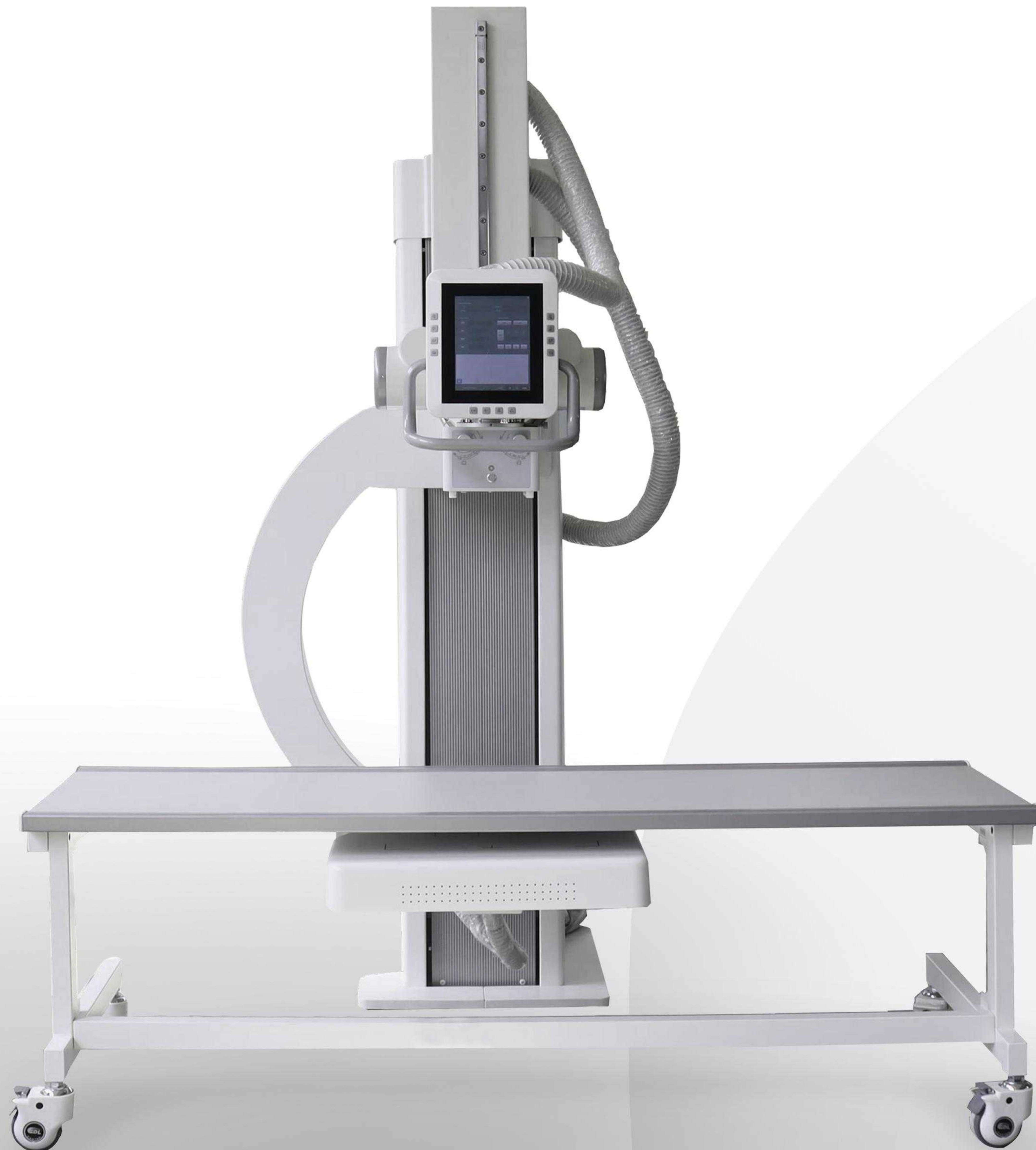


Model	RC-DDX02 Series			
Power Output	32kW	50kW	65kW	80kW
Current	10-400mA	10-630mA	10-800mA	10-1000mA
Voltage	40kV-125kV	40kV-150kV	40kV-150kV	40kV-150kV
mAs	0.1-400mAs	0.1-630mAs	0.1-800mAs	0.1-1000mAs
Exposure time	1-6300ms	1-6300ms	1-6300ms	1-6300ms
Focus Size	1.0/2.0	0.6/1.2	0.6/1.2	0.6/1.2
Tube Head	Touchscreen Control Panel			
Detector Type	Flat Panel Detector			
Vision Size	17*17"/14*17"			
A/D Conversion	16 bits			
Spatia Resolution	3.6lp/mm			
Pixel Size	3072X3072			



U-arm type Digital DR system

Model No. RC-UDX01(50KW) / RC-UDX01(65KW)



✓ Excellent Performance in Multiple Scenarios

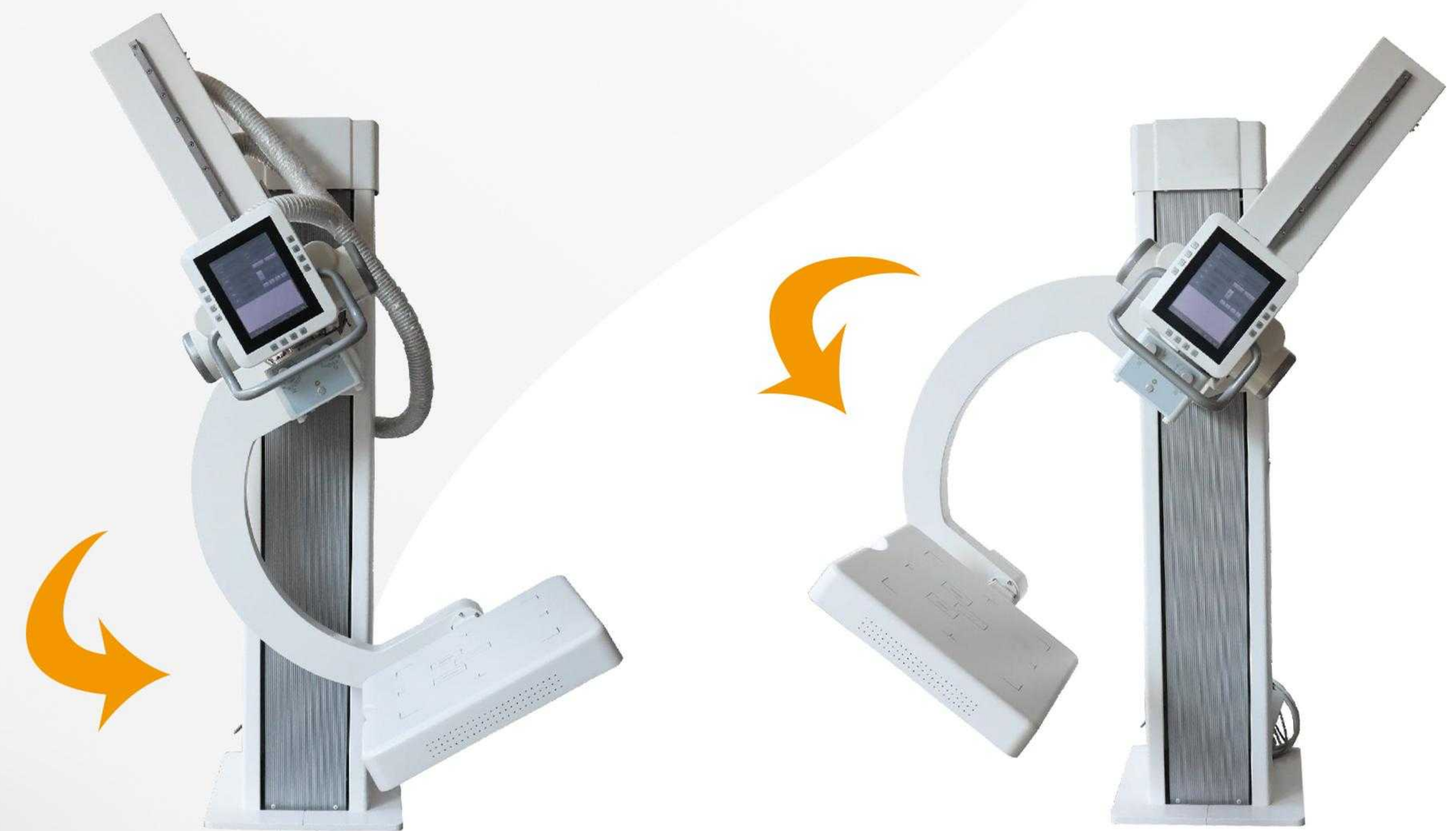
Well-knit structure, less space occupation
Fast screening for physical examination

✓ Powerful Image Chain Strong Adaptability

UHF high-voltage generator ensures the X-ray stability and performance.
High heat capacity tube ensures continuous exposure for high patient volume.
Large size of amorphous silicon FPD ensures high-efficiency diagnosis.
Powerful specialized software enhances visual experience for every image, while reducing radiographic dose.

✓ Flexible in Different Positions

One-key positioning
Minimal C-arm design with large angle rotation
Easy to satisfy multi-positional imaging requirements: upright, supine, lateral, axial and many other special positions

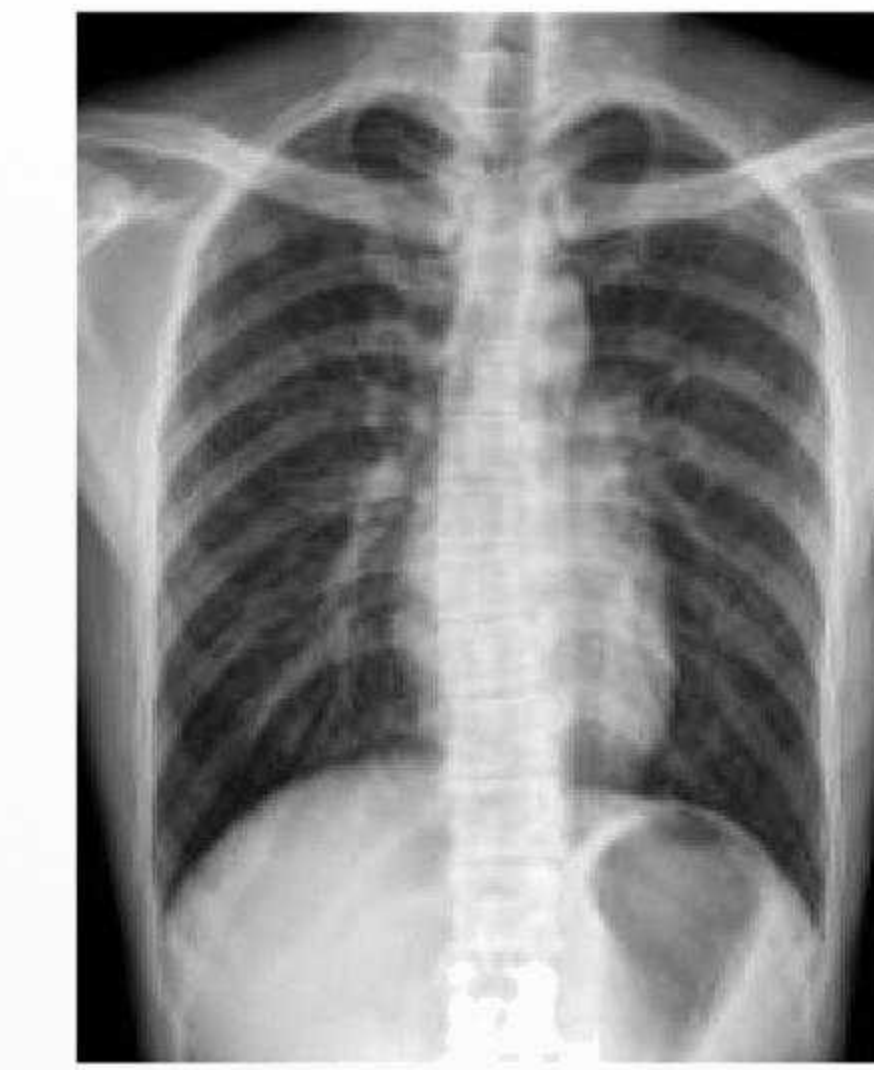


U-arm type Digital DR system

Model No. RC-UDX01(50KW) / RC-UDX01(65KW)



C-spine



Chest



Chest



Pelvis



Hands



Foot



L-spine



L-spine



Knee joint

Model	RC-UDX01 Series			
Power Output	32kW	50kW	65kW	80kW
Current	10-400mA	10-630mA	10-800mA	10-1000mA
Voltage	40kV-150kV	40kV-150kV	40kV-150kV	40kV-150kV
mAs	0.1-400mAs	0.1-630mAs	0.1-800mAs	0.1-1000mAs
Exposure time	1-6300ms	1-6300ms	1-6300ms	1-6300ms
Focus Size	1.0/2.0	0.6/1.2	0.6/1.2	0.6/1.2
Detector Type	Flat Panel Detector			
Vision Size	17*17"			
A/D Conversion	16 bits			
Spatial Resolution	3.6lp/mm			
pixel Size	3072X3072			

Ceiling mounted DR X-ray machine

Model No. RC-CMX01

✓ This is a versatile radiography device with an easy-to-use design for routine examinations. It allows you to practice all types of exams in a standing, sitting or lying down position. With constant innovations, It is one of the star products. It consists of a safe and reliable Ceiling-mounted system. Flexible ceiling frame enables all types of diagnostic procedures from table to chest examination. It provides finest image resolution through Flat Panel detector. Easy operations make the work efficient.

*Sensitive Touch, Easy Adjustment

10 inch touch screen, sensitive operation

The exposure parameters and rack control are intelligently adjustable, and the near and far ends are synchronized in real time, making it easy to adjust.

*Fully automatic intelligent mechanical system for precise control of every motion

*Easy to use fully auto and manual

*Build-in detector charging

Ceiling mounted DR X-ray machine

Model No. RC-CMX01



✓ **Tube carrier**

Transverse travel 2.4m

Longitudinal travel 2m

Vertical travel 1.5m

Tube rotation range(Horizontal axis) -270°, +270°, detent position at each 45°

Tube rotation range(Vertical axis) -150°, +150°

✓ **Bucky stand**

Vertical travel 1.4m

✓ **Elevating table**

Tabletop transverse travel 260mm

Tabletop Longitudinal travel 750mm

Tabletop vertical travel 210mm

Bucky travel 480mm motorized

✓ **Generator**

Nominal power 80kW

Frequency 400kHz

Tube voltage 40-150KV

Tube current 10-1000mA

Loading time 0.001-10s

Current time product 0.1-1000mAs

Max. output power 90kW

✓ **Tube**

Nominal Tube Voltage 150kV

Focal Spot 0.6/1.2mm

Anode Heat Capacity 367kHU

Max Speed 10800rpm

✓ **Detector(Wireless)**

Scintillator CsI

Pixel Pitch 140μm

Acquisition Matrix 3072×3072

Effective Area 430×430mm

A/D 16bit

Spatial Resolution 3.7Lp/mm

✓ **Image Workstation**

CPU ≥3.7GHz

Memory ≥4GB

Hard Disk ≥1T

Screen Size 23.8inch

✓ **Collimator**

Operating mode Electric

Max. Field of view 45cm×45cm

✓ **Grid**

Focal length 1000mm & 1800mm

Ratio 10:01

Density 200L/inch

Dynamic Digital Radiography and Fluoroscopy System

Model No. RC-DDR01(50KW, 65KW)



RO-CHAIN Multi-purpose R/F System is a flexible and compact system with various functions such as radiography, fluoroscopy, stomach examination, gastrointestinal tract examination, etc. Its wide-range movements and auto DR operations reduce the patient movements and make the operation easier and faster.

Fluoroscopy: Dynamic a-Si flat panel detector is designed for real-time imaging. The 17×17-inch image sensor has direct deposition CsI, which provides excellent low-dose imaging at frame rates up to 30 fps. It is a digital fluoroscopic X-ray system, which can be used in both general radiography, fluoroscopy for gastrointestinal, urolog applications.

Radiography: Retractable tube arm, max SID is 1800mm. It could provide digital radiography of various body parts without blind area.

High-performance and high-capacity with big focus and high speed, which is suitable for long-time diagnosis.

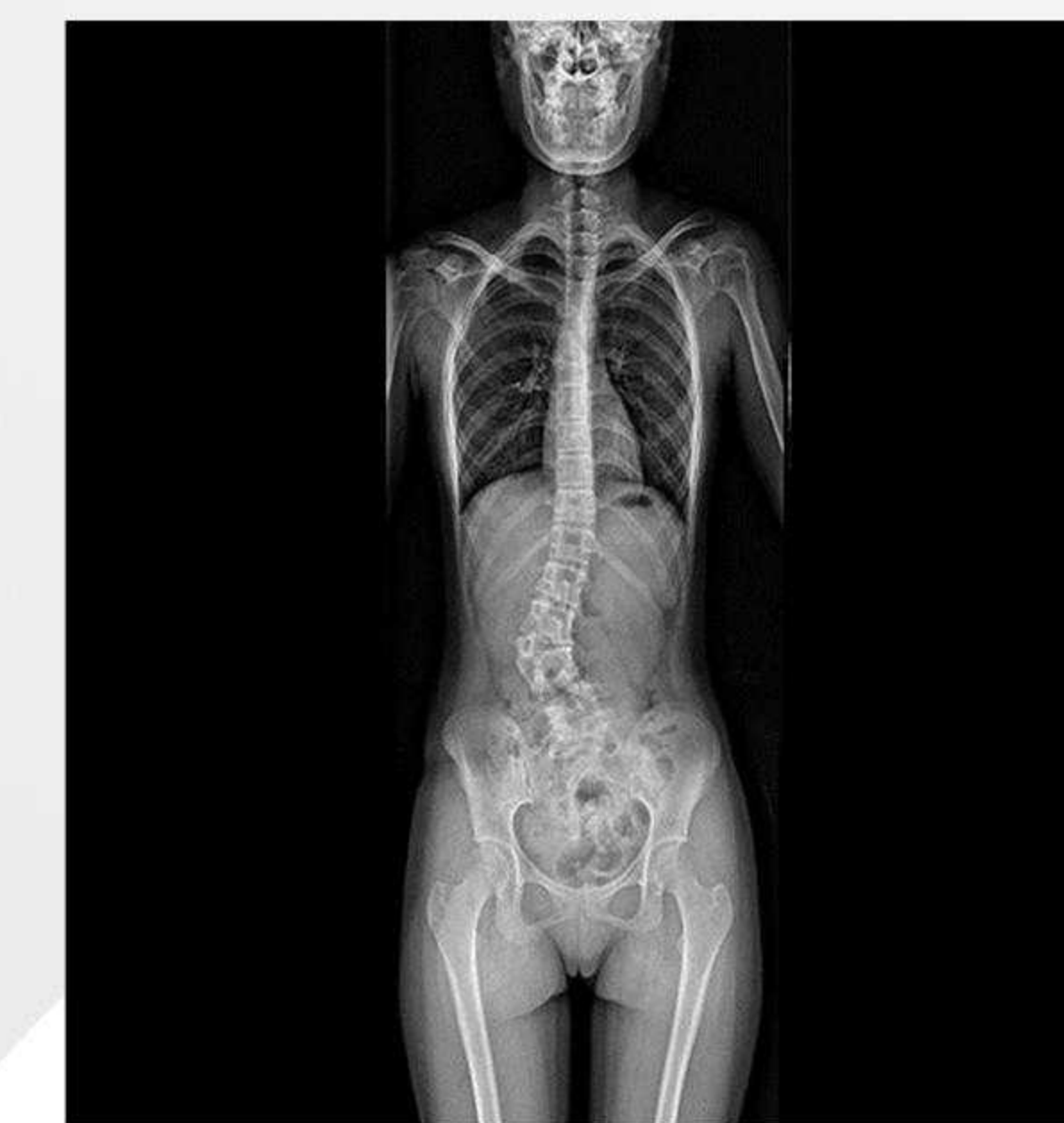
High inverting frequency and high voltage generator ensures output of constant DC.

Dynamic flat panel detector brings digital radiography and fluoroscopy of various positions directly.

Strong and weak electricity separation and excellent EMC characteristics.

High density grid further improves X-ray quality and provides images with good effect.

Designed for low-dose fluoroscopic imaging



Dynamic Digital Radiography and Fluoroscopy System

Model No. RC-DDR01(50KW, 65KW)



✓ Ambient Conditions

Ambient temperature: 10°C~40°C

Relative humidity: 30%~75%

Atmospheric: 70~106kPa

✓ X-ray Generator

Output power: 50KW

Frequency: 500kHz High frequency with inverter technology

Current (fluoroscopy): 0.5~6.0mA

Voltage (fluoroscopy): 40kV~125kV

Current (radiography): 10mA~630mA

Voltage (radiography): 40kV~150kV

Exposure time: 1~6300ms

mAs: 0.1mAs~630mAs

✓ X-ray Tube

Anode type Rotating Anode

Focal Spot value: 0.6mm /1.2mm

Maximum voltage: 150KV

Revolving speed of anode: 2800rpm

Inherent filtration: 1.0mmAl

Anode heat storage capacity: 300kHU

Maximum cooling rate of anode: 870W

Housing heat storage capacity: 900kJ

✓ X-ray detector(Flat Panel Detector)

Type Amorphous Silicon

Scintillator Cesium Iodide

Active Area: 17x17Inch(43cm*43cm)

Active Pixel: 3072 × 3072

Pixel Pitch: 139um

Limiting resolution: 36Lp/cm

Data acquisition time: ≤2s

✓ Collimator

Type Electric and multileaf collimator

Power: 150W; 24VAC 1

Lamp timer Automatic illumination with timer for lamp(30S)

Filtration: 1.2mmAL

✓ Mobile patient table

Type Table for gastrointestinal imaging

Tabletop lateral movement:

240mm(-120mm~+120mm)

Rotating range: -20°~+90°

✓ Mechanical movement

SID: 1000mm~1800mm

Detector Cassette movement: 1100mm

✓ Workstation

CPU: Intel i5

Memory: 8GB

HDD: 500GB

Monitor: 24"LCD

DICOM3.0Query for integration with any PACS

Functions Import/export function

Image info

Management of patient info

Post processing

Measurement etc.

X-ray Machine For Veterinary

This X-ray system is specialized in veterinary digital radiography. It is suitable for any parts of pet. As its high-quality images and low-dose radiation, it is widely used in pet hospital.

Model	RC-V32 Series
Voltage	220V±22V;50Hz±1Hz optional:110V±11V 60Hz±1Hz"
Internal Resistance	<05Ω
Power	≥40KVA
Output power	32KW
Frequency	25KHZ
Current	10~400mA
Voltage	40~125KV
Anode type	Rotating Anode
Focal Spot value	10mm /20mm
Maximum voltage	125KV
Revolving speed of anode	2800rpm
Inherent filtration	10mmAl
Type	Amorphous Silicon
Active Area	17x17Inch(43cm*43cm)
Active Pixel	2912*2912
Pixel Pitch	139um
A/D Conversion	16bits



Model No.
RC-V32-A(32KW, 400MA)



Model No.
RC-V32-B(32KW, 400MA, has 10 inch
color touch screen)

C-arm System

Model No. RCCII-3.5KW / RCCII-5KW

- ✓ Widely use in operating room, X-ray department, emergency room, intervention and peripheral angiography. General surgery, urology, chest surgery, trauma, spine surgery, abdominal surgery, orthopedics, bone reduction and fixation, endoscopy and surgery. Intervertebral disc angiography and angioplasty.



C-arm System

Model No. RCCII-3.5KW / RCCII-5KW



✓ C-arm dimension

Distance of focal spot to image generator(SID):1000mm
Depth in arm \geq 650mm
Mobile stand :1800mm*800mm*1850mm
Image system: 750mm*530mm*1680mm

✓ Standard configuration

High resolution CCD camera:1set
x-ray generator:1set
9" image intensifier:1set
image processor
23" LCD high definition display 1 set
Mobile stand :1 set

✓ HF generator

110KV, 3.5kw /5kw, 40kHz

✓ Fluoroscopy mode

Fluoroscopy mode 40~110kv 0.5~5mA
(KV manual and automatic);
Pulsed fluoroscopy 40~110kv 0.5-5mA
Boost fluoroscopy 40~110kv 5~10mA;
Photography 40~110kv 1~250mAs

✓ X ray tube

Dual-focus fixed anode:0.6mm/1.5mm
Italy IMD Technology

✓ Image intensifier

Three fields of vision 9, 6, 4.5 Japan Canon Brand

✓ CCD camera

Japanese Watt Brand, 360° rotation

✓ Image system

5 Degree recursive Noise Reduction
Frame freezing
Thousands of image data storage
Image conversing and rotating
Screen display with image comparison
Support "one click" print, print the image report
Equip with Dicom 3.0 network port(optional)
Support Dicom 3.0 standard data export function

✓ Mechanical motion specifications

Vertical travel:0-400mm
Horizontal travel:0~200mm
Rotation about horizontal axis: \pm 180°

C-arm DR System

Smart design digital mobile C-arm machine, it is especially used for orthopedic surgery, pain management, trauma surgeries and so on.

Model No.
RCC-5KW / RCC-15KW

✓ X-ray source part

The out put power is 5KW or 15KW which ensures the high quality X ray, lower dose and sharper images.

✓ Dynamic Flat Panel Detector

Compared with image intensifier, it could provide 22% more anatomic coverage in outstanding quality, and deliver a large field of view, image without distortion.

✓ C-arm frame and movement

The opening is 820MM and ARC depth is 640MM. These excellent designs can provide more free space for doctors to operate.

The C-Arm can move 360 degree around the horizontal axis.

This C-Arm slide on orbital movement is 30 degree to 90 degree.

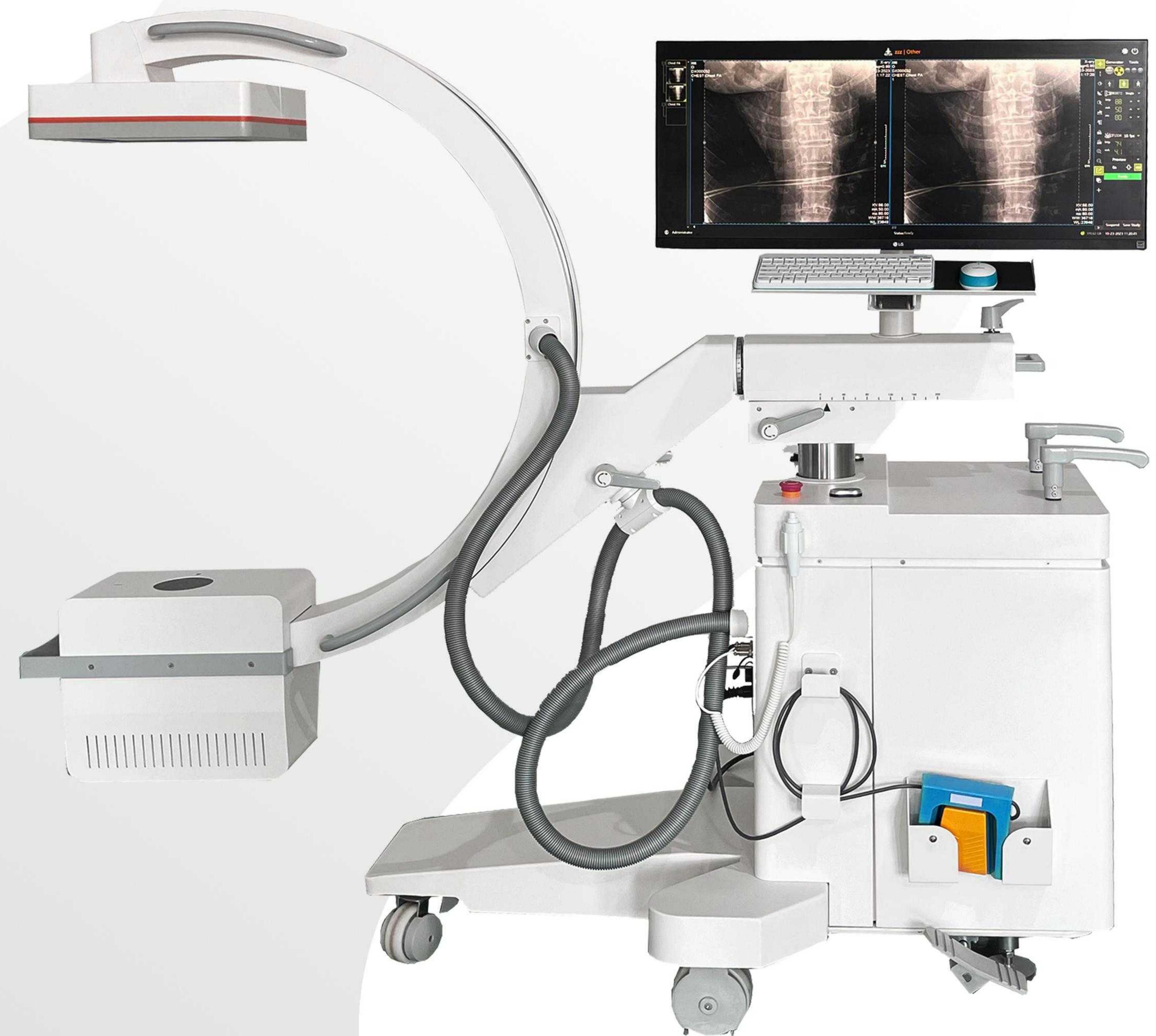
And the C-arm swing range is 30 degree.

Forward and backward movement range is 200MM.

Lift up and down movement is 400MM.

✓ Workstation

It comes with the 34 inch LG brand monitor display. This system integrates the function of registration, image collection, image processing and reporting. The parameter values of different body parts are image collection, image processing and reporting. The parameter values of different body parts are preset in the system, and the doctor can adjust them according to the actual situation. Exposure hand switch and exposure pedal switch are configured to make it more convenient for doctors to use. Designed with wheels and central brakes, it can move and stand freely, efficient, convenient and reliable.



C-arm DR System

Model No. RCC-5KW / RCC-15KW



✓ Ambient Conditions

Ambient temperature: 10°C~40°C
Relative humidity: 30%~75%
Atmospheric: 70~106kPa

✓ X-ray Generator

Output power: 5KW/15KW
Current of fluoroscopy: 0.3-6.3mA
Current of radiography: 0.1-100mA
Pulsed mA: 32mA
Voltage: 40kV-125kV
mAs range: 0.2-100mAs
ms range: 10-1600ms

✓ X-ray Tube

Anode type Rotating Anode
Focal Spot value: 0.3mm /0.6mm
Rotating anode speed: 2800rpm
Anode heat storage: 300KHU
Housing Heat Storage Capacity: 1200KHU

✓ Flat-panel Detector

Size: 21*21cm
Detector Technology Amorphous Silicon
ScintillatorCsI
Image resolution: 2.5lp/mm
Frame rate MAX: 30frames/sec
Active pixels: 1024*1024 pixels
A/D conversion: 16 bit
Pixel Pitch: 205 μm
Faster image capture speed The image will be displayed on the monitors in 0.8S after exposure.

✓ Grid

Brand: JPI
Ratios: 10:1
Density: 60l/cm
SID: 100cm

✓ C-arm Unit

SID: 1000mm
Free space(Tube to I.I): 820mm
Arc depth: 640mm
Vertical movement: 0-400mm(Electric)
Horizontal movement: 0-200mm(Manual)
Planning movement: ±15°(Manual)
Orbital movement: -30°-+90°(Manual)
C-arc rotation: ±180°

✓ Workstation & Software

Monitor One set 34" LCD HD monitor
Computer memory 500G mass storage.
CPU 2.7GHZ
Software The image can be step-less rotated continuously for 360°
Flip the Reference image horizontally or vertically
Applies various Gamma values for each image
Last frame frozen
Images can be saved in different formats, such as JPG, DCM, RAW, etc.
DICOM 3.0
Data communication
Data storage etc.

Digital Mammography System

Model No. RC-DMS01

- ✓ Digital Mammography System is a professional equipment for breast diseases examination. It is suitable for early detection of mammary gland lesions. This system adopts the latest technology of flat panel detector, which has a higher sensitivity to X-ray. Its resolution reaches the value of 60lp/cm. It can easily examine calcified lesion less than 0.1mm. By improving the accuracy and sensitivity of mammography diagnosis, it becomes a reliable tool to diagnose early stage of breast cancer.
- ✓ Professional mammography x-ray tube from Italian IAE with molybdenum provides extremely small focus spot, and owns high heat capacity. It guarantees high quality images and long working time. Self R&D 40kHz high voltage generator uses dual-inverter technology, guaranteeing the stability of X-Ray, largely improving the clarity and quality of images with low dose. Unique CMOS flat panel detector provides high-resolution images as it is sensitive to X-ray. Self R&D 'Console' software with national patent, provides strong capabilities of post processing. It has leading post-processing algorithm of breast, which could bring you perfect mammary images. 27" LCD display.



Digital Mammography System

Model No. RC-DMS01



✓ Ambient Conditions

Ambient temperature: 10°C~40°C

Relative humidity: 30%~75%

Atmospheric: 70~106kPa

✓ X-ray Generator

Output power: 5.0KW

Frequency: 80-200KHZ

Current: 10-200mA

Voltage: 20-50KV

Exposure time: 5-10000s

mAs: 0.5mAs-600mAs

Self-diagnostic system Tube overload protection

✓ X-ray Tube

Brand IAE (Italy)

Anode type Rotating Anode

Focal spot value: 0.1mm /0.3mm

Maximum voltage: 40KV

Anode heat storage capacity: 300KHU

House heat storage capacity: 426KHU

Target material Molybdenum

Anode rotation speed: 10000rpm

Maximum anode heat dissipation rate: 500W

✓ X-ray detector(Flat Panel Detector)

Scintillator Cesium Iodide

Active area: 235*290mm

Active pixel: 2762*3408

Pixel pitch: 85um

AD Conversion(bit): 16

Spatial resolution: 60Lp/cm

✓ Mechanical Device

SID: 650mm

Exposure field: 240mm*300mm(Maximum)

Up-down movement of c-arm: ≥ 600 mm

Rotational angles of c-arm: $-90^{\circ} \sim +90^{\circ}$
(Electromagnetic lock)

Rotational angles of tube: $-30^{\circ} \sim +30^{\circ}$

✓ Compression Paddle

Movement type Electric

Up-down movement range: ≥ 210 mm

Size of compression paddle: 260mm*180mm

Pressure range: 0~20kg (0.1kg step)

✓ Workstation

Monitor 24" LCD AOC brand

CPU ≥ 2.0 GHz

Memory ≥ 2 GB

HDD ≥ 500 GB

DICOM3.0 Query for integration with any PACS

Functions Import/export function

Image info

Management of patient info

Post processing

Measurement etc.