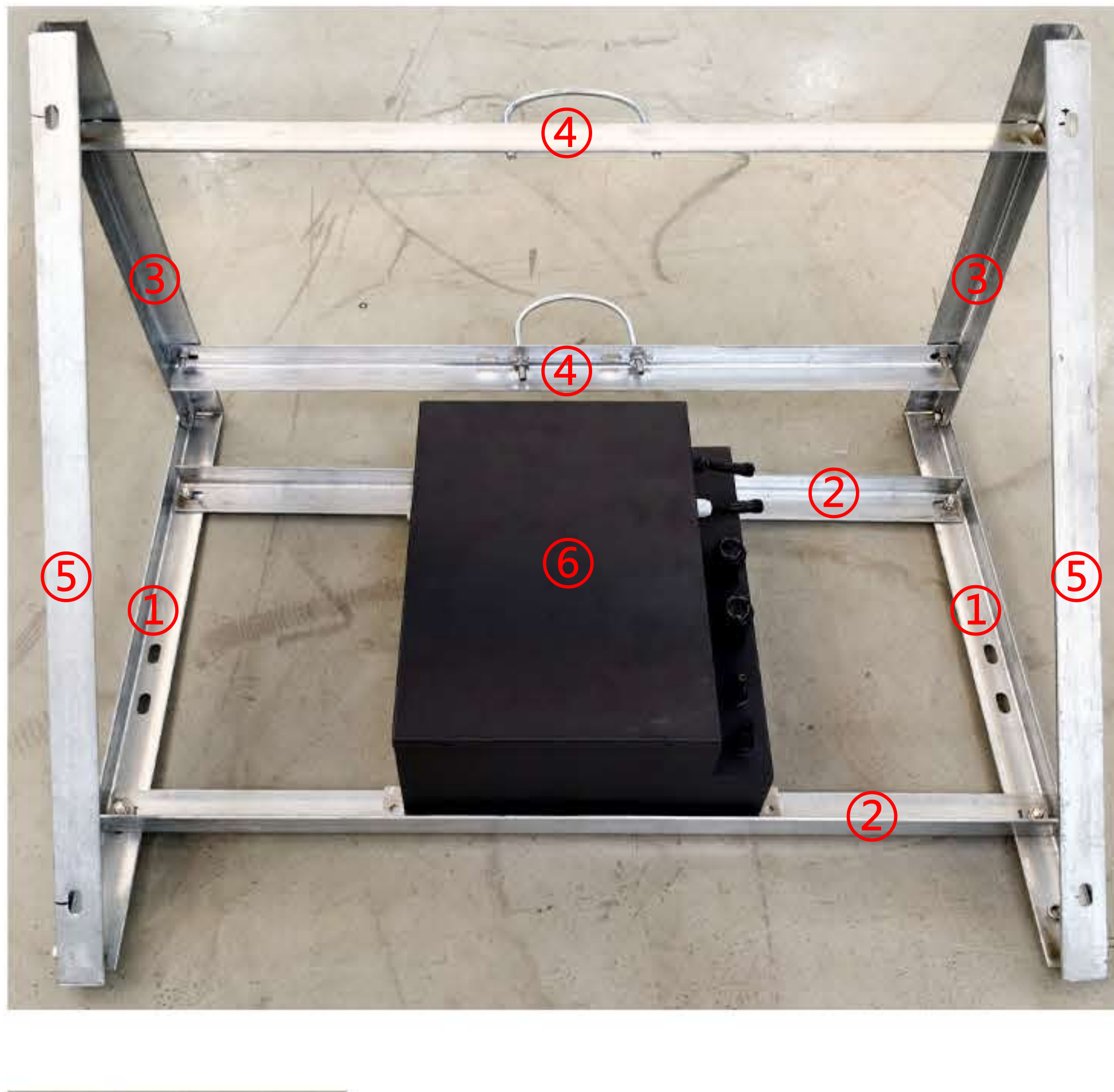


Installation Steps

Note: Each number is marked with two



chamfer

① is located at the bottom, on the left and right sides respectively. ① Only one end of the two ① has chamfering.

The chamfered one is connected to ⑤.



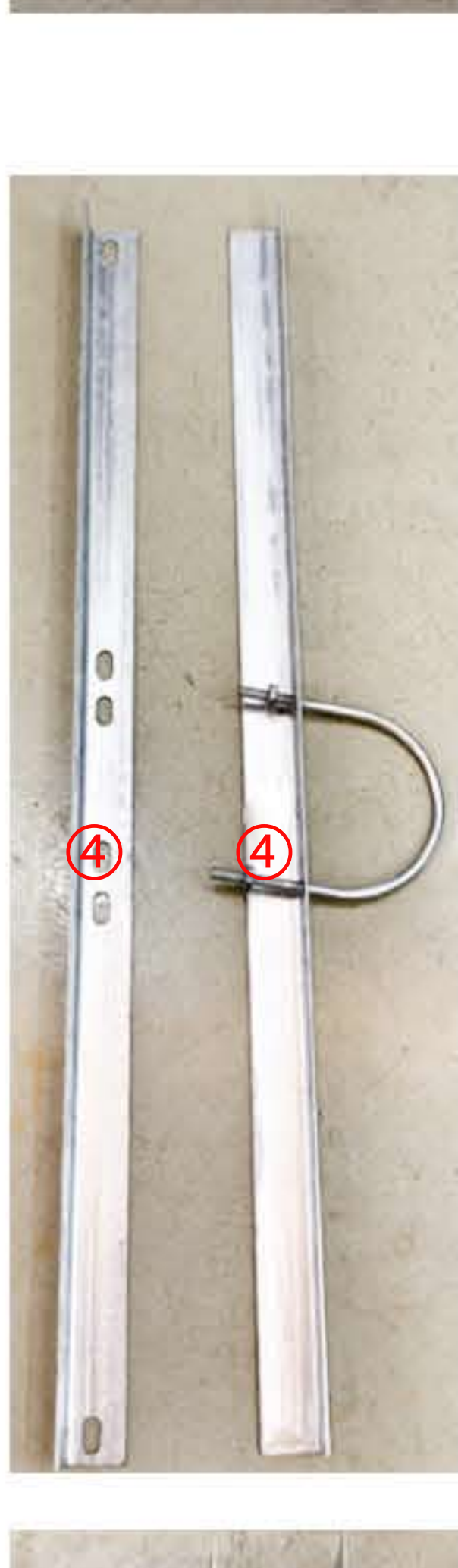
Next is ②, located at the bottom, one behind the other, used to fix ⑥-battery.



chamfer

On the back are two upright poles ③.

Both ends of ③ are chamfered and connected to ① and ⑤.



chamfer

④ The most distinctive feature is that the hoop is installed in the center.

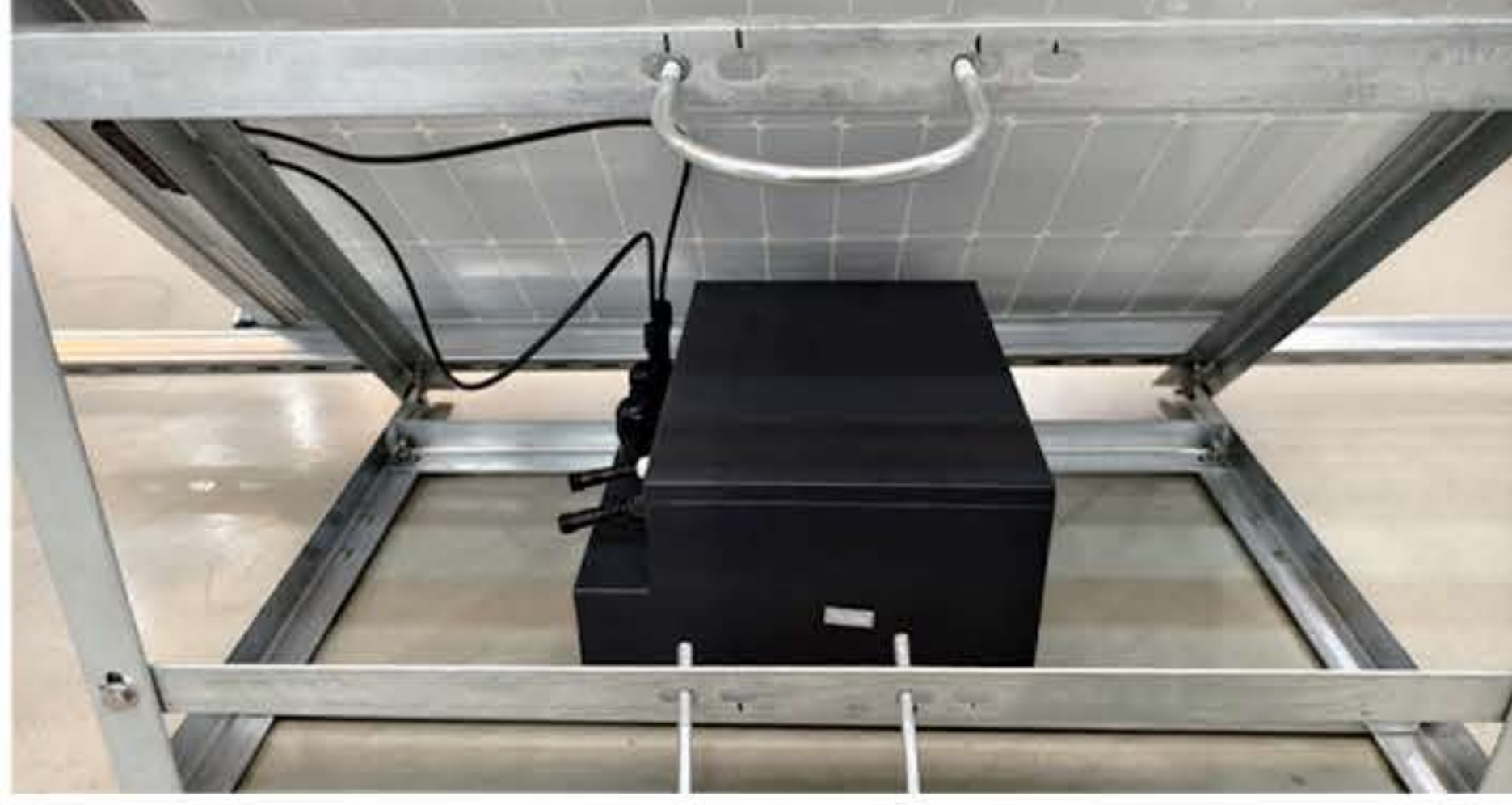
④ Install it up and down on the back.



⑤ is used to fix ① and ③.

①, ③, ⑤ form a right triangle, which is stable.

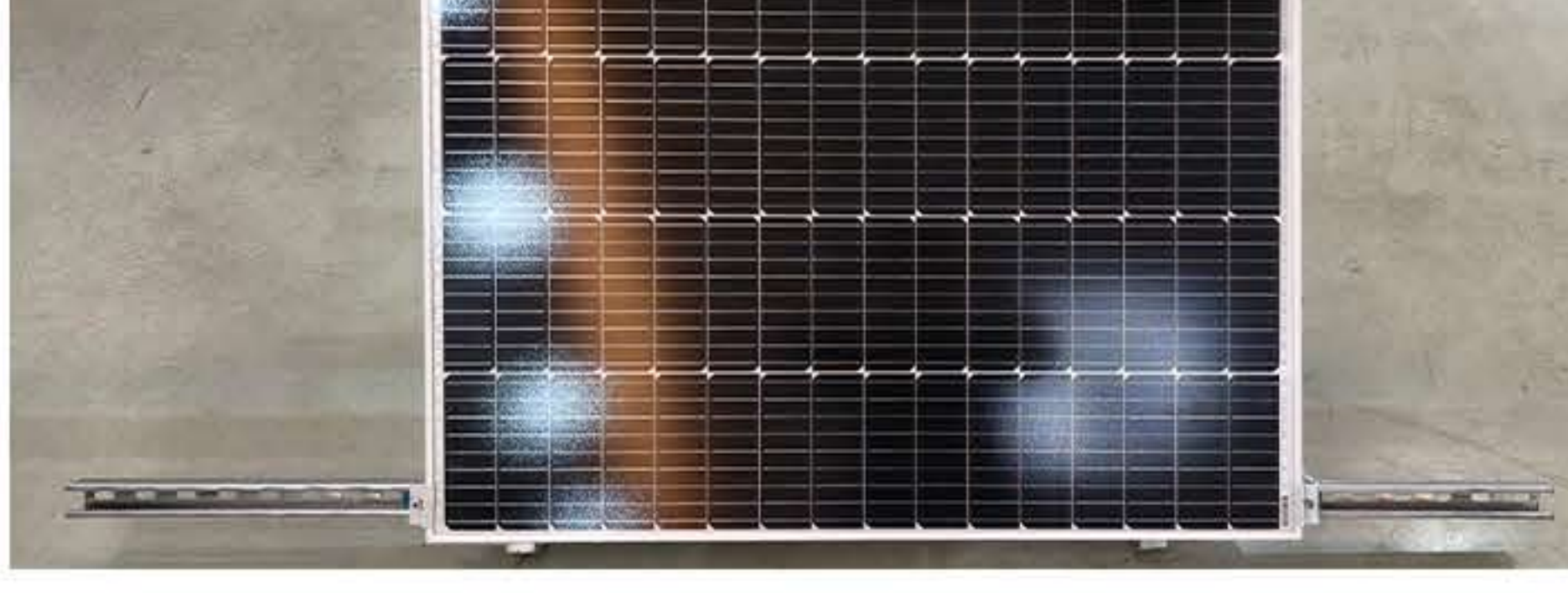
Installation Successful



Back



Back



Front