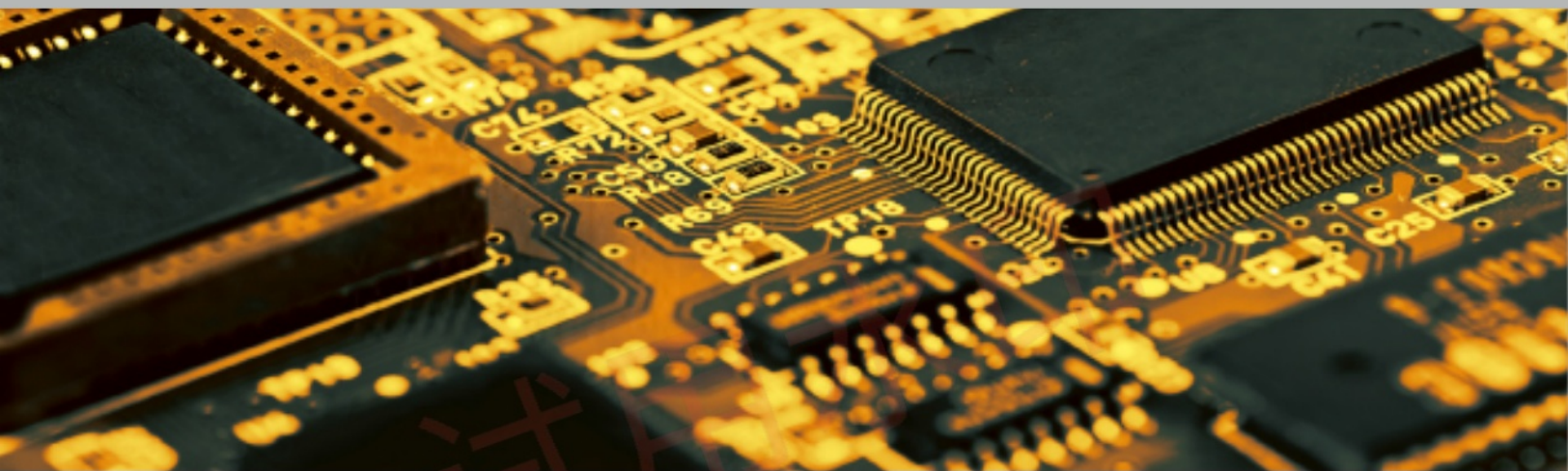


**MIRTEC**

# 3D AOI series

## MV-6 OMNI

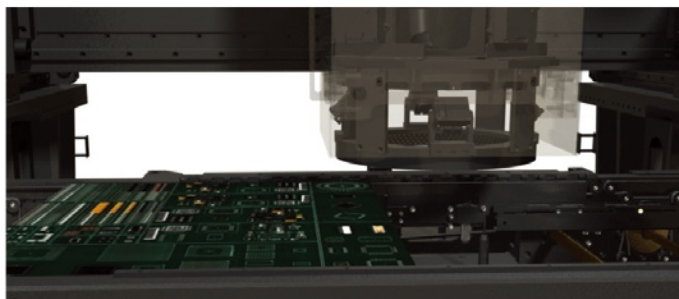
**IPC®  
CFX****QPL  
LIST  
ED**

- 25/15 megapixel main camera
- 12 sets of Moorfring
- 8 segments of technological color lighting
- 18 megapixel side camera®

## 3D AOI series

# MV-6 OMNI

The **MV-6 OMNI** series is a complete 3D in-line optical inspection equipment, equipped with a 25-megapixel high-resolution camera, 12 sets of Moire fringe light, 18 megapixel side camera and 8 segments of color lighting system, which can effectively inspect 03015mm components.



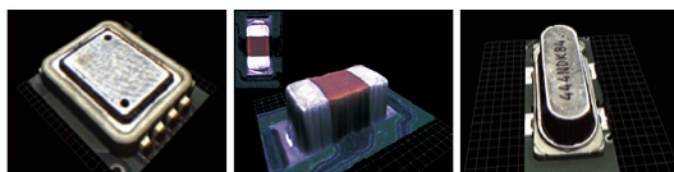
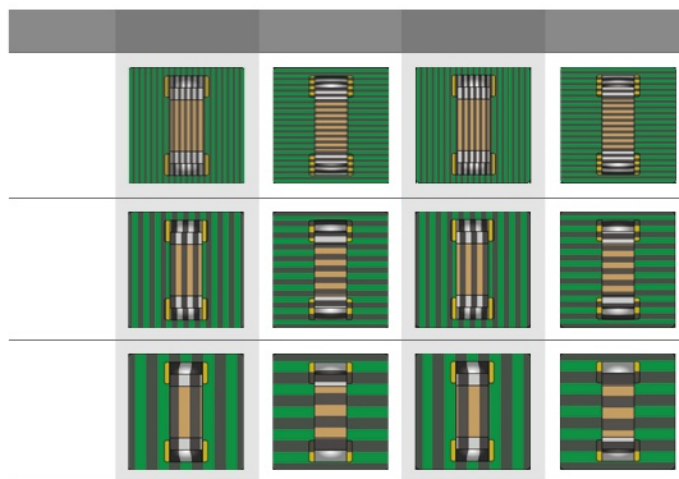
**The world's best technology for accurate 3D measurement**

The Mohr fringe projection device can measure components from four aspects: east, south, west and north to obtain 3D images for correct and high-speed defect detection



**12 sets of digital Moire fringe projection technology**

■ ■ ■ The 3D missing image of each point should be accurately detected by using all 4 3D whole hair 3D shooting junction combined with the inorganic blind main phase and combined with the high and low frequency moir fringe to detect the height of various components





## 25 megapixel high resolution camera

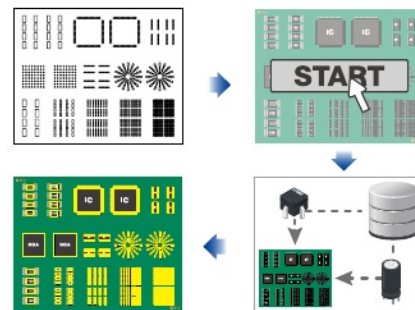
We are proud of our next-generation vision system and our 25-megapixel high resolution main camera, which allows for more accurate and stable inspection and is the first in the world to use CoaXPress 40% faster. The transmission method allows four times more data to be transmitted and the processing speed to be increased 7.7 times. The large  $\mu$ FOV ultra precision encryption Camera probe speed can detect 03015(mm) parts 40% CoaXpress high performance transmission system applied with the first Link in the world Camera world using phase amplifier with a phase ratio of 2500 and a speed of 10,000 pixels



## Use deep learning Sprite automated programming tools

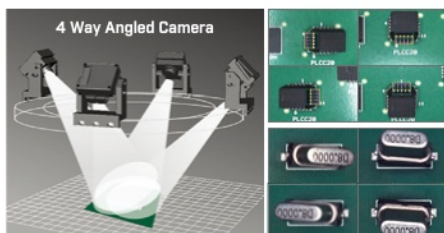
Inspection software for deep learning explores the most suitable parts and automatically matches them. The highest inspection quality is achieved with only a few clicks, independent of user proficiency.

Inspection quality and work procedures are standardized. Deep Learning the highest inspection explanation and matching reduces programming time by more than 90% compared to manual programming



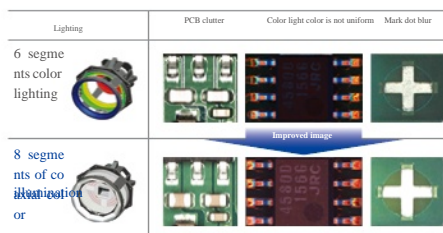
## 18 megapixel Side Camera

mounted 1 camera in four directions, southeast, northwest the only J-pin inspection solution side camera full-PCB inspection



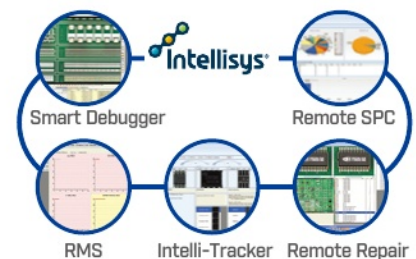
## 8 axis coaxial color lighting CSP and other specular/reflective materials micro crack inspection

Check performance by combination of colored lighting, excellent Solder Joint eliminate shadow effects due to high height parts



## Intellisys system

In case of defects, not only can they be analyzed in advance, but also can be controlled remotely, thus reducing the cost of producing defective products.





规格

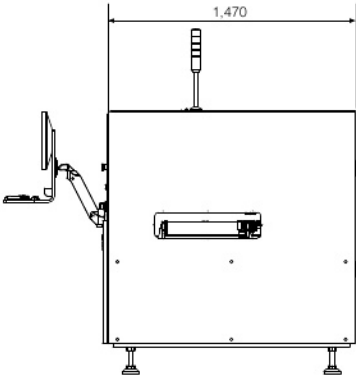
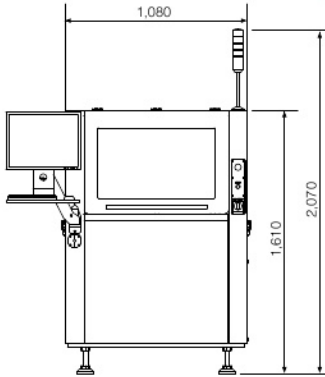
型号			MV-6 OMNI		
Type Code			MV-6_M_OMNI_S_SL	MV-6_M_OMNI_S_DL	MV-6_M_OMNI_T_SL
印刷电路板最大尺寸范围					
在线AOI			50 x 50 ~ 510 x 460 mm	50 x 50 ~ 510 x 590 mm (Single) 50 x 50 ~ 510 x 300 mm (Dual)	50 x 50 ~ 330 x 460 mm 50 x 50 ~ 510 x 460 mm
OMNI-视觉®3D/2D检测技术					
3D检测技术			数字12投影摩尔技术		
高精度度			±3 μm		
3D/2D最快检测速度					
2500万像素相机 (CoaXPress)		选项	7.7 μm	1,460mm² / Sec	
1500万像素相机 (CoaXPress)			10 μm	1,890mm² / Sec	
			15 μm	4,260mm² / Sec	
2D最快检测速度					
2500万像素相机 (CoaXPress)		选项	7.7 μm	4,593mm² / Sec	
1500万像素相机 (CoaXPress)			10 μm	5,080mm² / Sec	
			15 μm	10,716mm² / Sec	
系统规范					
照明系统			8段同轴彩色照明系统		
侧面相机系统		选项	1800/1000万像素数字彩色侧面相机 (4个)		
软件		标准	内置SPC、内置维修软件		
		可选	RMS, RRS, IRS, OLTT, RDS, 遥控SPC, ePM-AOI		
PCB正面间距			45mm		
PCB反面间距			50mm		
最大PCB厚度			0.5mm ~ 5mm		
最大PCB重量			4kg		
最小测量尺寸		25M CXP Camera	7.7 μm	03015 Chip (mm) / 0.3 Pitch (mm)	
		15M CXP Camera	10 μm	03015 Chip (mm) / 0.3 Pitch (mm)	
			15 μm	0603 Chip (mm) / 0201 Chip (inch) / 0.4 Pitch (mm)	
机械定位系统			伺机马达系统		
电源要求			单相 200~240V 50~60Hz, 1.1kw		
空气压力			5 Kg / cm² (0.5 MPa), 5 LPM		
尺寸及重量					
尺寸(mm)		Machine	1,080(W) x 1,470(D) x 1,610(H)		
		Width (Machine & Conveyor)	1,110	1,110	1,270 / 1,450 / 1,630
重量			约 950 kg	约 1,000 kg	约 950 kg

※ Our company is not responsible for any problems arising from the use of uncertified code readers. For a list of available reader models, please consult our company headquarters.

Dimensions

(in mm)

·MV-6\_M\_OMNI\_S\_SL



· 若数据变更、不预先通知。

