

DUMP TRAILER SOLUTIONS



INNOVATIVE MOBILE SOLUTIONS
DESIGN ▼ MANUFACTURE ▼ INTEGRATE



apex HYDRAULIC
Apex Hydraulic Co.,Ltd

DUMP TRAILER SOLUTIONS

APEX is not only a hydraulic cylinder manufacturer anymore! Our goal is to be a value-added manufacturer of quality hydraulic components and turnkey solutions tailored for the trailer industry.

We adapt our business the way you want, strengthening our product portfolio and our services for you. By understanding your needs, we cooperate in the development of new products - as partners. This is what sets APEX apart from the rest!

Our dump trailer solutions feature:

- High quality components
- Fully customizable
- Competitive warranty
- Reliable performance
- Outstanding technical support
- Integrated solutions
- One-stop shop



apex HYDRAULIC
Apex Hydraulic Co.,Ltd

HYDRAULIC CYLINDERS

- Single acting
- Double acting
- **NEW** Telescopic cylinder
- **NEW** Hydraulic Jack
- Tie-rod
- Scissor hoist
- Sourced in North America seals

HYDRAULIC POWER UNITS

- Single acting
- Double acting
- Customized
- Metal or plastic, round or square tank

MOUNTING BRACKETS

- Side trunnion mount
- H-frame bracket

ACCESSORIES

- Manual control, 2 or 4 buttons
- Manual remote 20' cable
- Wireless remote – long range (optional)
- Many other options available

TOOLBOX

- Aluminium
- Plastic

POWER SUPPLY

- **NEW** - NOVAPEAK 5000LT series



APEX HYDRAULIC
Apex Hydraulic Co.,Ltd

INNOVATIVE MOBILE SOLUTIONS
DESIGN ▼ MANUFACTURE ▼ INTEGRATE



1
NOVAPEAK



2
TRUNNION MOUNT
BRACKETS



3
HYDRAULIC JACK
BRACKETS



4
HYDRAULIC
POWER UNIT



5
INTEGRATED TOOLBOX



6
TELESCOPIC CYLINDER



7
CUSTOM & STANDARD
HYDRAULIC CYLINDERS



8
SCISSOR HOIST



9
WIRELESS
REMOTE WITH Y SPLICE

NOVAPEAK

5000LT SERIES

THE NEW GENERATION OF POWER

The NovaPeak 5000LT series is specifically designed to supply maximum power for your application. It can withstand more than 50 000 cycles and charges in minutes. The NovaPeak 5000 series allows you to eliminate downtime and provides you with the perfect reliable solution for your application.

LT stands for LOW TEMPERATURE

- Charges in minutes
- No downtime
- 5-year warranty
- Shock & vibration resistant
- Made in CHINA



APEX HYDRAULIC
Apex Hydraulic Co.,Ltd



PRODUCT SPECIFICATIONS

ELECTRICAL

Rated Voltage Range	12-16V
Rated Capacitance	5000F
Effective Energy Storage	80Wh
Capacitance Tolerance	±20%
ESR _{DC}	≤10m Ω
Rated Operation Current	250A
Max Current	300A
Cycle life	50 000 cycles

TEMPERATURE

Operating Temperature	-25°C to +55°C/-13°F to 130°F
Storage Temperature range	-40°C to +70°C/-40°F to 158°F

PHYSICAL

Dimensions	166mm x 351mm x 152mm 16 1/2" x 13 15/16" x 5 15/16"
Terminals	3/8-16UNC
Weight	5.8 kg/12.5 lbs
Environmental Protection	IP67
Vibration Specification	MIL-STD-810

SAFETY

Temperature and undervoltage and charging LED indicator	
Certifications	RoHS

Email: jason@hydraulicapex.com



APEX HYDRAULIC

Apex Hydraulic Co.,Ltd

1

TOOLBOX

- Easily mounted on trailer A-frame
- Toolbox can be purchased separately

Different models available:

POLYMER TOOLBOX WITH LOCKING HASP

36" W x 18.75" D x 17.72" H

AMERICAN CHECKERPLATE ALUMINIUM TOOLBOX

36" W x 17.75" D x 16.375" H

AMERICAN CHECKERPLATE ALUMINIUM HIGH TOOLBOX

36" W x 17.75" D x 20.125" H

2

POWER UNIT

Model: 01, 02, 03, 06, 10, 11, 12, 13, 15, 24, 36, 48

Tank: From 1.7 liters to 23,5 liters - Plastic or steel

Pump: From 0.8 to 8.0 cc

Mounting: Horizontal

3



POWER UNIT REMOTE CONTROL

Including 20' of 16/3 cables

5



AUTO-RESET FUSE

7



RED BATTERY CABLE, 18" LONG

BLACK BATTERY CABLE, 24" LONG

RED BATTERY CABLE, 24" LONG

9



HYDRAULIC HOSE 3/8"

4



NOVAPEAK

Including battery tray and no more downtime

6



MASTER SWITCH

8



Y-SPLICE WIRELESS REMOTE CONTROL

10



BATTERY CHARGER

INTEGRATED MOBILE SOLUTION





APEX HYDRAULIC
Apex Hydraulic Co.,Ltd

INNOVATIVE MOBILE SOLUTIONS
DESIGN ▼ MANUFACTURE ▼ INTEGRATE



630320

WIRELESS REMOTE Y-SPLICE
FOR DOUBLE ACTING CYLINDER

FOR MODEL 10-11 & 12

CONNECTIONS



630321

WIRELESS REMOTE Y-SPLICE
FOR SINGLE ACTING CYLINDER

FOR MODEL 2



Web: www.hydraulicapex.com
Email: jason@hydraulicapex.com

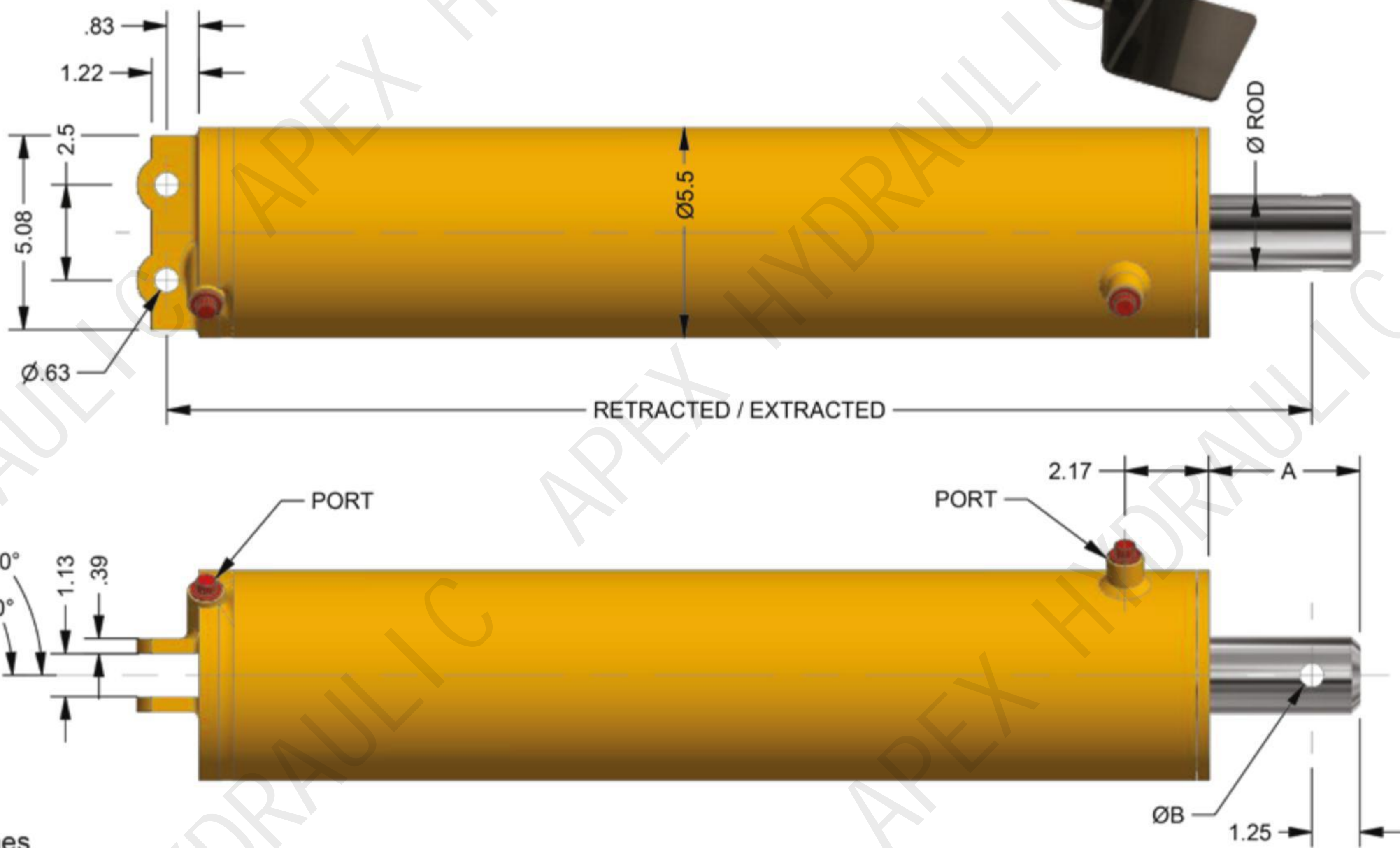
HHT 3000 PSI



APEX HYDRAULIC
Apex Hydraulic Co.,Ltd



*Actual cylinder color is BLACK
MADE FOR SCISSOR HOISTS.



*All dimensions are in inches

Part No.	BORE	A	B	STROKE	ROD DIAMETER	RETRACTED	EXTENDED	MAX FORCE LBS	PORT	WEIGHT (LBS)
HHT501575	5.00	3.5	Ø0.69	15.75"	Ø2"	23.5"	39.25"	58905	SAE#6	66.1
HHT502000	5.00	3.15	Ø0.63	20"	Ø2"	27.5"	47.5"	58905	SAE#6	81.4
HHT502150	5.00	3.5	Ø0.63	21.50"	Ø2"	29.375"	50.875"	58905	SAE#6	86.8
HHT601575	6.00	3.5	Ø0.69	15.75"	Ø2"	23.5"	39.25"	84823	SAE#6	88.0
HHT602150	6.00	3.5	Ø0.63	21.50"	Ø2"	29.375"	50.875"	84823	SAE#6	101.2

HHT - HOIST HYDRAULIC CYLINDERS

All numbers are for reference only, please consult our engineer for details

HSH

3000 PSI



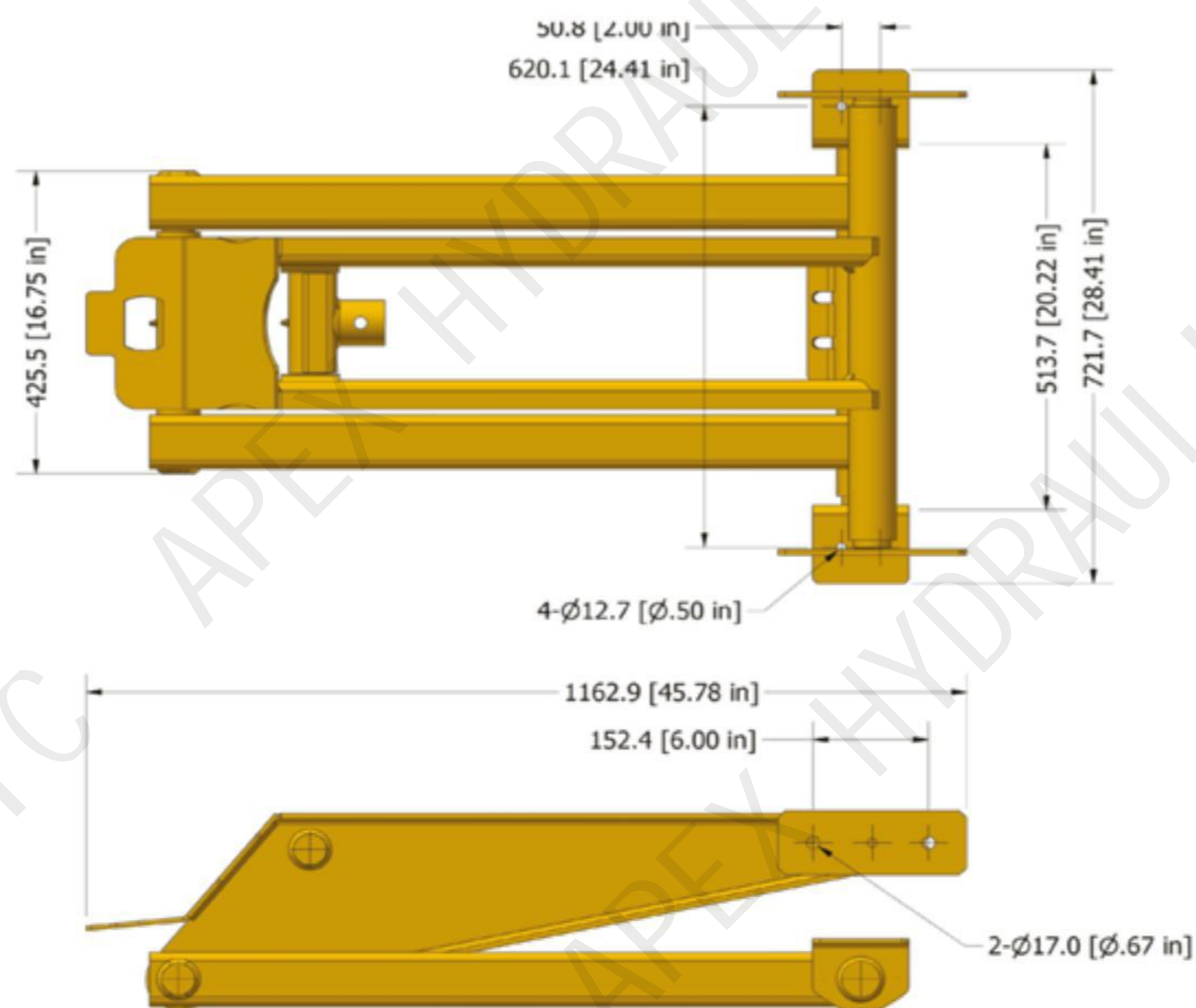
APEX HYDRAULIC
Apex Hydraulic Co.,Ltd

EXTREMELY RELIABLE AND DURABLE SCISSOR HOIST

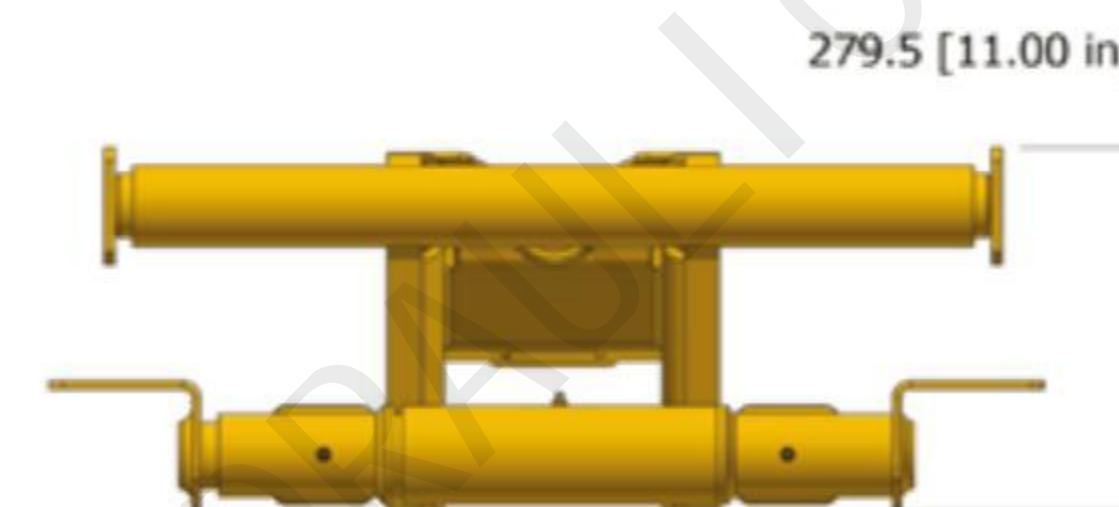
AVANTAGE :

- ▼ Mounting brackets included in hoist assembly;
- ▼ Easy installation (bolt supports and plates to chassis and tilt frame);
- ▼ by selecting different stroke cylinder or (and) mounting position to have different dump angle;

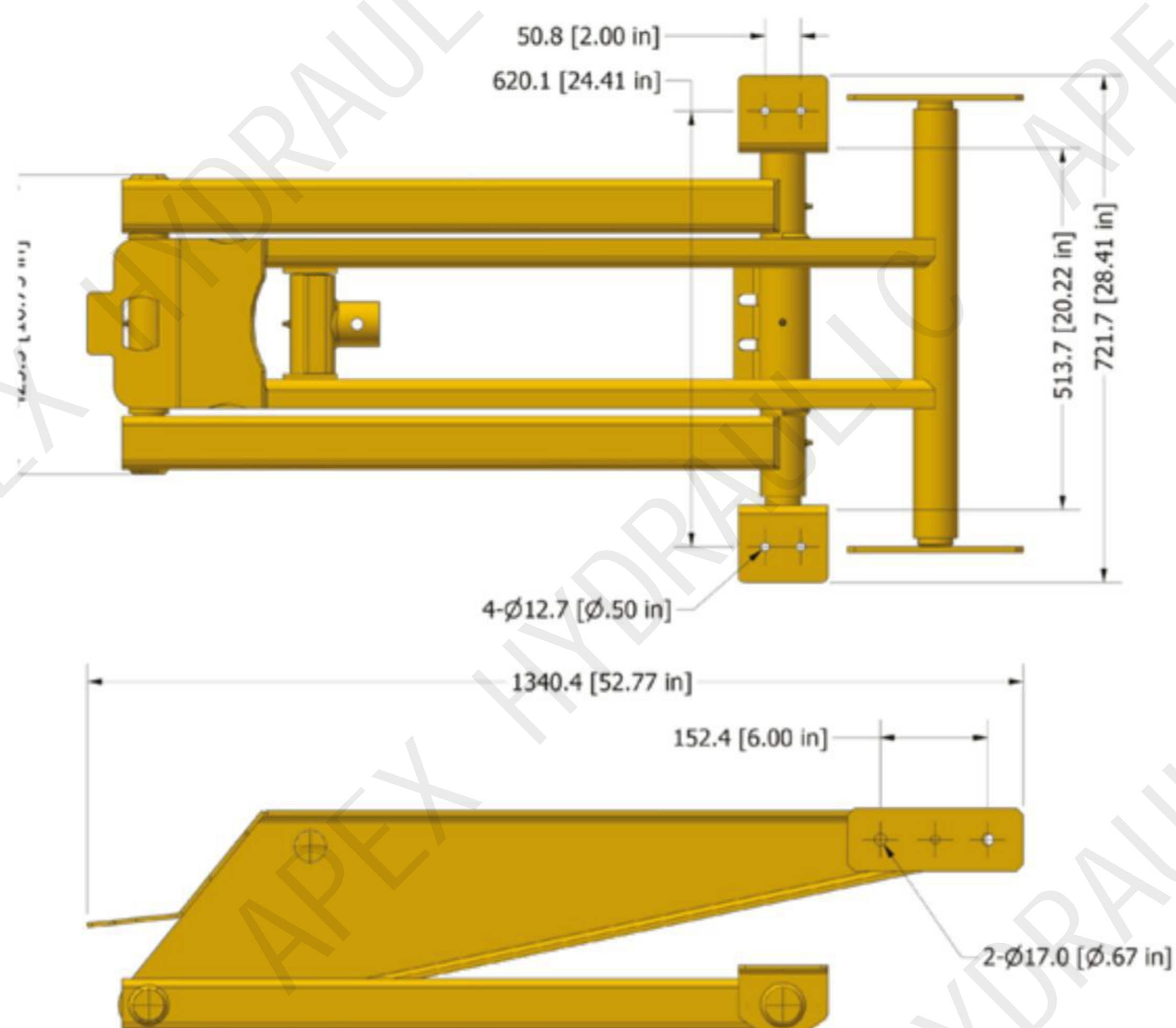
HSH516 HOIST DIMENSIONS



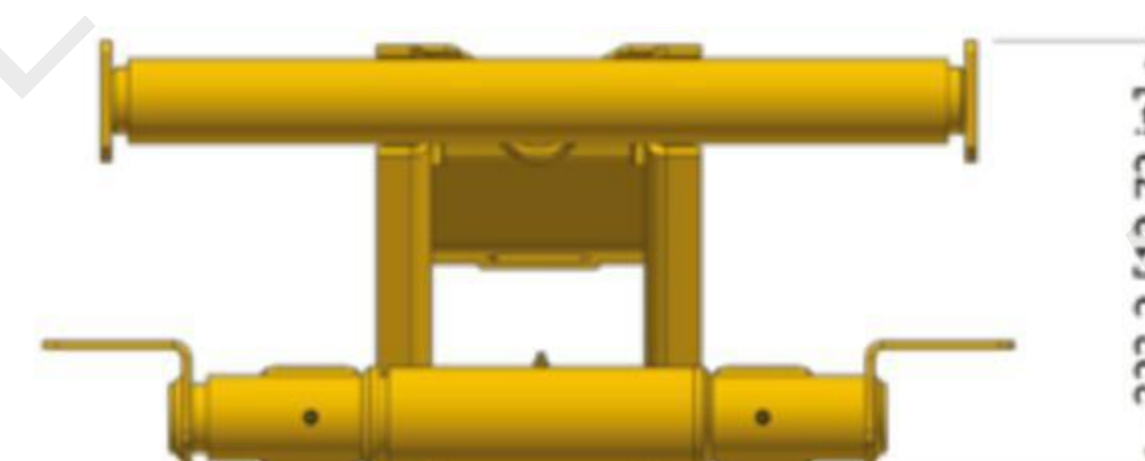
CAPACITY : 5 TONS



HSH520 HOIST DIMENSIONS



CAPACITY : 7 TONS



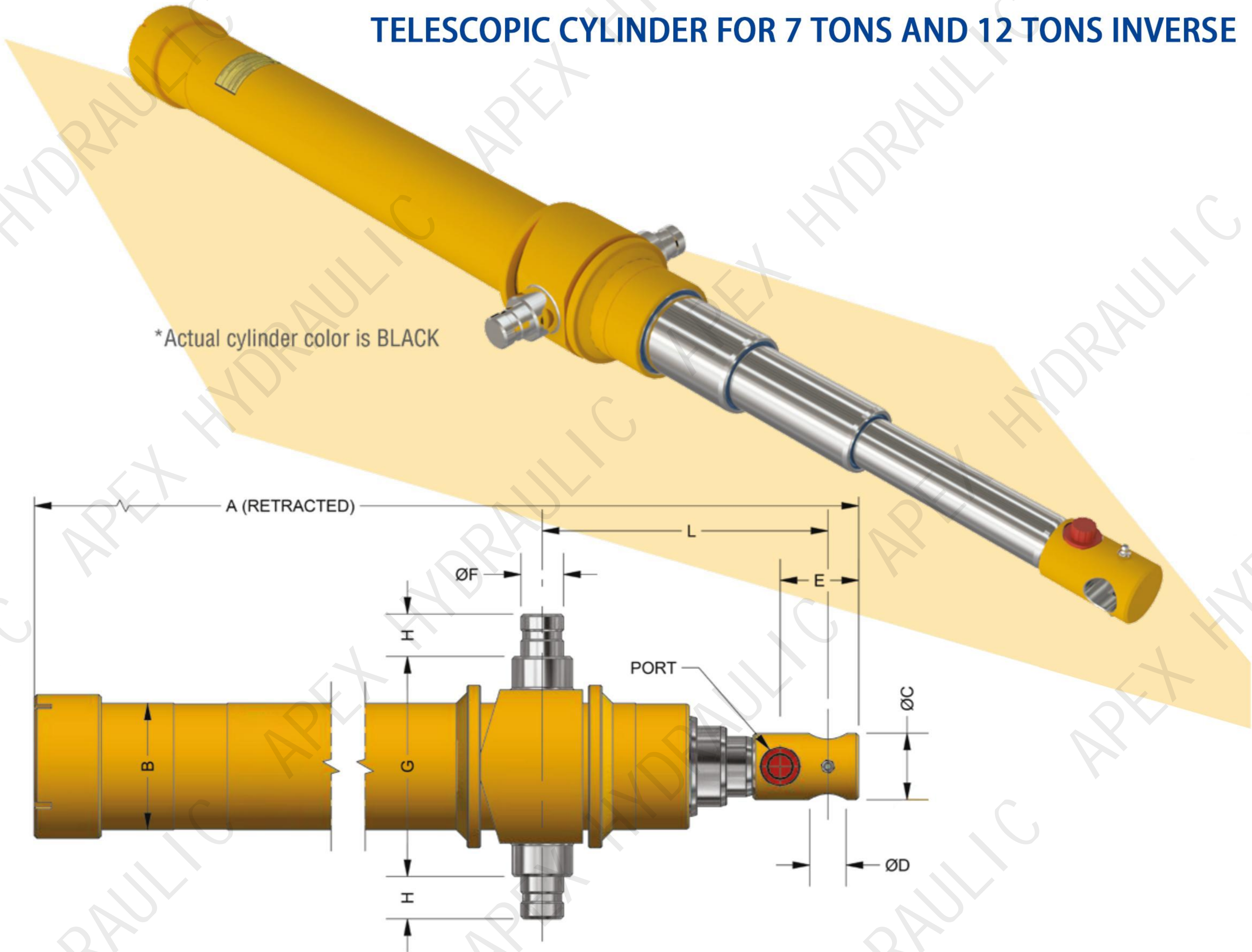
HSH - SCISSOR HOIST

All numbers are for reference only, please consult our engineer for details



HTC - TELESCOPIC HYDRAULIC CYLINDERS

TELESCOPIC CYLINDER FOR 7 TONS AND 12 TONS INVERSE



7 TONS INVERSE													
PART No.	STROKE	A	B	C	D	E	F	G	H	L	PORT	WEIGHT [Lbs]	VOLUME [Gal.]
HTC-07833-ORB	78"	35.5"	3.75"	2"	1.063"	3.0"	1.25"	6.5"	1.25"	7"	SAE #8 (3/4-16UNF)	68	1.6
HTC-09033-ORB	90"	39.5"	3.75"	2"	1.063"	3.0"	1.25"	6.5"	1.25"	7"		75	1.8
HTC-10833-ORB	108"	45"	3.75"	2"	1.063"	3.0"	1.25"	6.5"	1.25"	7"		101	2.2
12 TONS INVERSE													
HTC-07843-ORB	78"	34.75"	4.4"	2"	1.063"	3.0"	1.5"	7.5"	1.5"	7"	SAE #8 (3/4-16UNF)	106	2.5
HTC-09043-ORB	90"	38.75"	4.4"	2"	1.063"	3.0"	1.5"	7.5"	1.5"	7"		107	2.8
HTC-10843-ORB	108"	44.75"	4.4"	2"	1.063"	3.0"	1.5"	7.5"	1.5"	7"		132	3.4
HTC-12043-ORB	120"	48.75"	4.4"	2"	1.063"	3.0"	1.5"	7.5"	1.5"	7"		143	3.8
HTC-14443-ORB	144"	56.78"	4.4"	2"	1.063"	2.25"	1.5"	7.5"	1.5"	7"		166	4.6

* All pictures may differ from the final products. Product specifications are subject to changes without notice.

All numbers given are nominal values and should be used for reference only.

UNIVERSAL TRAILER BACKUP CAMERA KIT



APEX HYDRAULIC
Apex Hydraulic Co.,Ltd



The supporting parts are made in China



OEM MONITOR



OEM REVERSE CAMERA



EUROTECH CAMERA



-WORKS WITH FACTORY INSTALLED DISPLAY

-PLUG AND PLAY INTEGRATION AVAILABLE ON MOST CARS, SUVs and TRUCKS

-INTERLOCK TYPE CONNECTORS ARE USED TO ASSURE MAXIMUM SIGNAL QUALITY

TRAILER REAR VIEW CAMERA:

VOLTAGE: 12V

WATERPROOF RATE: IP67

RESOLUTION: 640X480

CURRENT CONSUMPTION: LESS THAN 100MA

OPERATION TEMP: -20C~70C

LENS ANGLE: 150 DEGREE

*VEHICLE MUST BE EQUIPED WITH FACTORY INSTALLED BACKUP CAMERA

CONTACT US!

Web: www.hydraulicapex.com

Email: jason@hydraulicapex.com



APEX HYDRAULIC
Apex Hydraulic Co.,Ltd

APEX IS NOT ONLY A HYDRAULIC CYLINDER MANUFACTURER

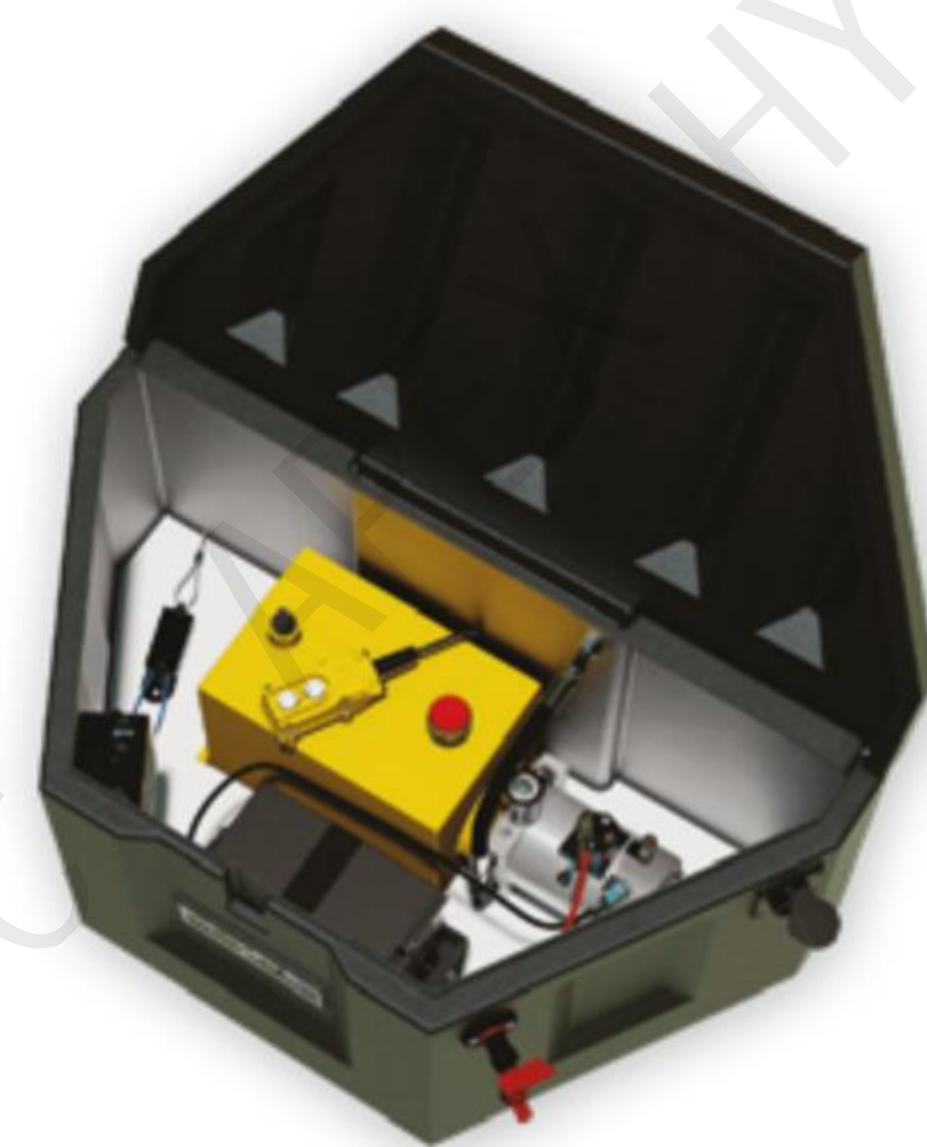
We can provide more than 500,000 unique hydraulic solutions.
Tell us about your needs!



CYLINDERS



SCISSOR HOIST



INTEGRATED TOOLBOX



NOVAPEAK



Y-SPLICE WIRELESS
REMOTE



CUSTOM MANIFOLD ASSEMBLIES

AND MORE...

Email: jason@hydraulicapex.com
Phone: +86 18253181828
Web: www.hydraulicapex.com
Address: East Office Building, 45 Beijing Road, Qianwan
Bonded Port Area, Qingdao, China (Shandong) Pilot Free
Trade Zone, 2024-0255 (A)



APEX HYDRAULIC
Apex Hydraulic Co.,Ltd