


Deluxe FullGlassDoorDisplayCooler

Model	V1U540	V1U635	
Capacity	295L 10.4cuft	495 L 17.5 cuft	
Gross Weight(kg)	90	100	
Unit size(mm)	540×560×1920	635×725×2050	
Package size (mm)	580×620×1960	670×740×2090	
Loading Qty (20/40HQ)	36 / 95	24 / 51	
Gas	R290		
Cooling Type	Dynamic cooling (no frost)		
Shelf QTY	5		
Inside Temperature	0 ~ 10 °C (32 ~ 50 °F)		
Power	220V 50/60Hz		
Climate Class	N~ST		
Compressor	Donper compressor		
LED Light	Inner vertical LED light		
Customized	Branding Sticker Additional Shelf Door Frame LED light Door Frame Color Handle Type etc.		

Sticker Template

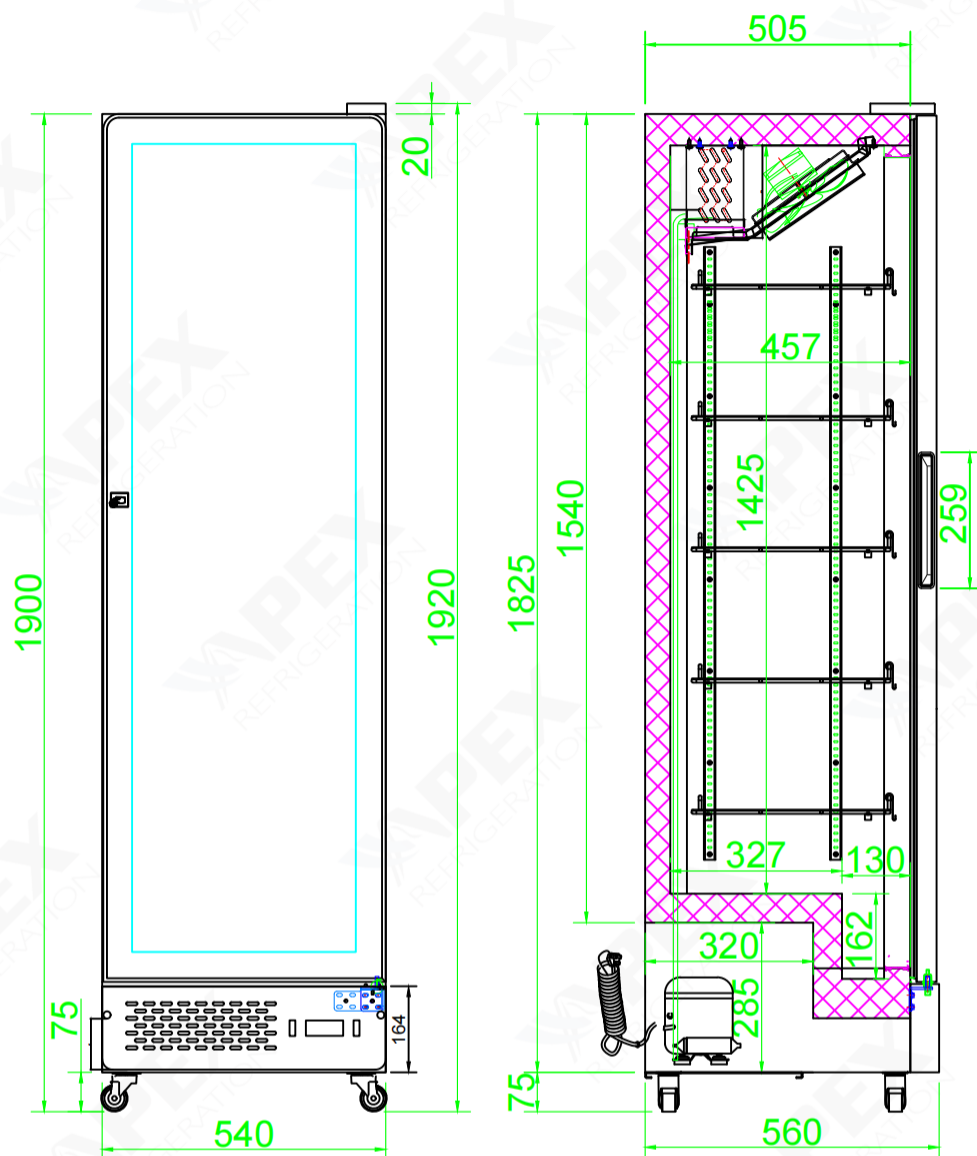
Sides



Model		V1U540	V1U635
Sides	①Length (mm)	505	625
	②Width (mm)	1825	1955

- Colours: CMYK or PANTONE. Please specify the PANTONE No. if there is any.
- Resolution: 300 DPI.Formats:Photoshop,ILLustrator in original created version including layers.
- Please create high-resolution design in Total dimensions,without bleed difference.
- Please don't place any important elements in any invisible areas.

V1U540 Drawing



V1U540 Drawing

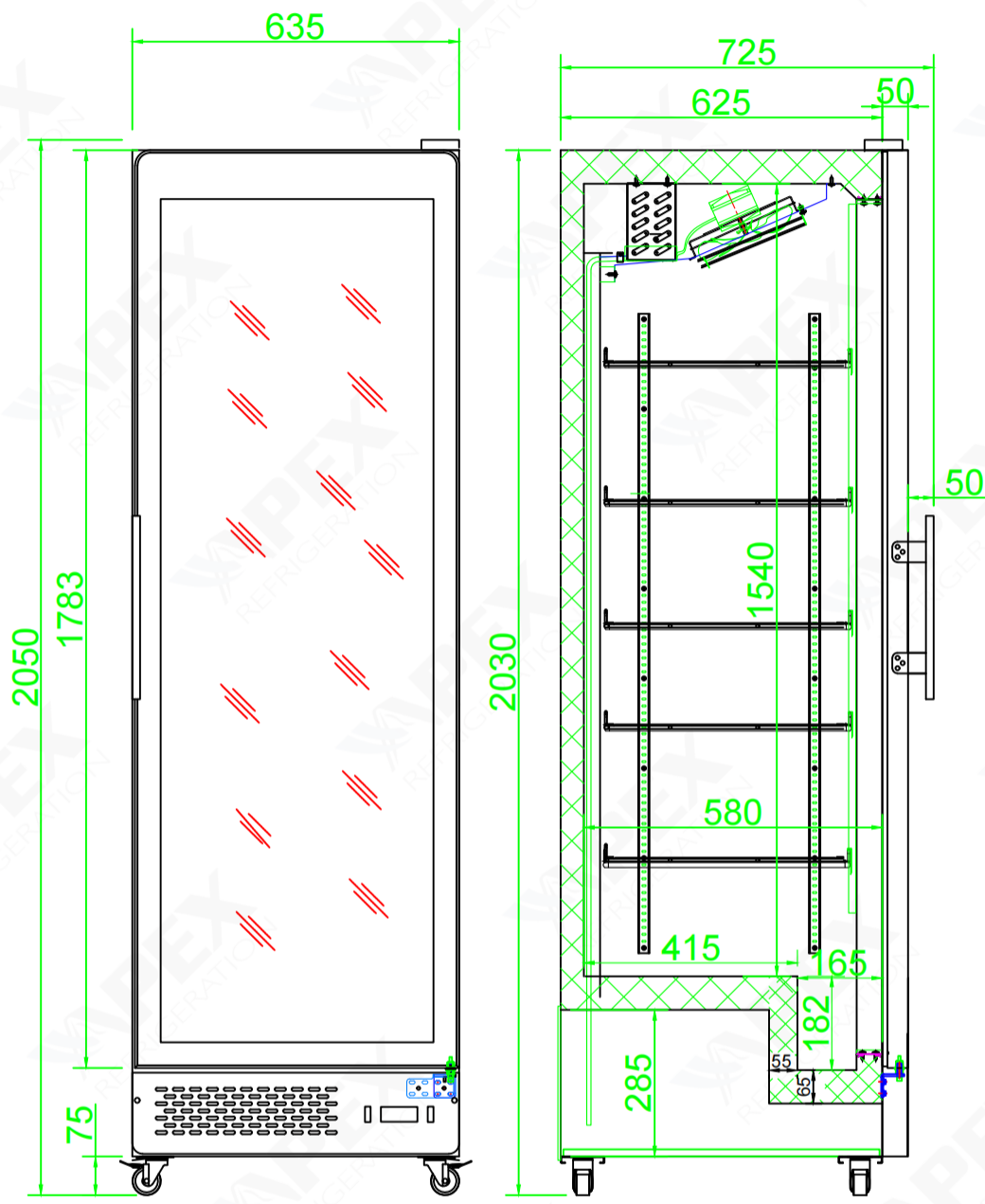
Unit Dimension (W×D×H) 540×560×1920mm

Package Dimension (W×D×H) 580×620×1960mm

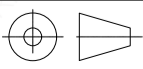


www.apexcool.com
info@apexcool.com

V1U635 Drawing



V1U635 Drawing

Unit Dimension (W×D×H)	635×725×2050mm
Package Dimension (W×D×H)	670×740×2090mm
	www.apexcool.com info@apexcool.com

OPERATING AND INSTRUCTION MANUAL

UprightCommercialDisplay
Cooler Freezer



Before installing your cooler,read these instructions carefully.

SAFETY PRECAUTIONS

- The purpose of the safety precautions in this manual is to ensue safe and correct use of the unit to minimize risks that could cause serious damage and injury to you or other persons. The safety precautions are divided into WARNINGS and CAUTIONS. Cases where improper handling of the unit could lead to death or serious injury are listed under the "⚠WARNING" heading. However, the cases listed under the "⚠CAUTION" heading could also lead to serious results. To ensure the safety, adhere strictly to both types of safety precautions.

- ⚠ WARNING Improper handling of the unit could lead to death or serious injury.
- ⚠ CAUTION Improper handling of the unit could lead to serious results depending on the circumstances.

- Text set off by the exclamation mark contains information that should be strictly adhered to.
- After reading the instruction manual, store it an easily accessible place where the user(s) of this product can easily find it.

PRECAUTIONS FOR INSTALLATION

⚠ WARNING

!

Installation should be performed only by the dealer or a qualified expert. Attempting to install the unit yourself could result in water leakage, refrigerant leakage, electrical shock, or fire.

PRECAUTIONS FOR INSTALLATION

⚠ WARNING	
<div><div>⚠ DANGER OF EXPLOSION</div><div>Installation should be performed only by the dealer or a qualified expert. Attempting to install the unit yourself could result in water leakage, refrigerant leakage, electrical shock, or fire.</div><div></div></div>	<div><div>⚠ ELECTRICAL SHOCK HAZARDS</div><div>Never splash water directly onto the product or wash with water as short circuit and electrical leakage could result.</div><div></div></div>
<div><div>⚠ DANGER OF EXPLOSION</div><div>Never put flammable or volatile substances into the unit as explosion and fire could result.</div><div></div></div>	<div><div>⚠ PROHIBITED</div><div>Do not damage, modify, excessively bend, strain, twist or bundle up the power cord. Also, placing heavy objects the power cord or squeezing it in a tight place could damage it, possible resulting in electrical shock or fire.</div><div></div></div>
<div><div>⚠ PROHIBITED</div><div>Use a dedicated wall outlet. Do not use extension cords or convenience receptacles as this could result in electrical shock, overheating and a fire</div><div></div></div>	<div><div>⚠ FLAMMABLE</div><div>Never use flammable spray cans or leave flammable substances near the unit. Sparks from electrical switches could result in explosion and fire</div><div></div></div>

SAFETY PRECUATIONS

⚠ WARNING	
<div><div>!</div><div>The cooler is intended for storage and display of beer and beverage for sale. Do not use for other purpose than the intended as this could adversely affect items placed in the unit.</div><div></div></div>	<div><div>⚠ ROTATING DEVICE</div><div>Never attempt to insert fingers, sticks, etc.fan is rotating at high speed inside the outlet.Injury, electrical shock and improper operation could result.</div><div></div></div>
<div><div>⚠ PROHIBITED</div><div>For indoor use only. Using the unit in a location exposed to rain could result in electrical leakage and electrical shock.</div><div></div></div>	<div><div>⚠ PROHIBITED</div><div>Never place heavy objects or items containing water op top of the unit. Objects could fall down and cause injury and spilled water could deteriorate the insulation of electrical components and result in electrical leakage.</div><div></div></div>
<div><div>!</div><div>Install the unit in a location where the floor is sturdy enough to support the load of the unit. If the floor is not sturdy enough or installation is incorrectly performed, the unit could tip over and falling shelves and products could cause personal injury.</div><div></div></div>	<div><div>⚠ CAUTION AGAINST EXPLOSION</div><div>If you find gas leakage, please don't touch the cooler and close gas and open the door for ventilation. Gas leakage cause explosion, fire and fire injury.</div><div></div></div>
<div><div>!</div><div>Store the unit in a location where it is not exposed to rain. Using a unit that has been exposed to rain could result in electrical leakage and electrical shock.</div><div></div></div>	<div><div>!</div><div>Away from hot air sources. Cooling performance is reduced if the unit is placed near heat sources such as hot plates and stoves and if it is exposed to direct sunlight.</div><div></div></div>
<div><div>!</div><div>Leave disassembly and disposal of the unit to qualified experts.</div><div></div></div>	<div><div>!</div><div>Should the unit need temporary storage, make sure not to store the unit in a location where children play and take precautions so that the door cannot be completely closed. This will minimize the risk that a child becomes trapped inside the compartment.</div><div></div></div>

⚠ WARNING

WELL VENTILATED PLACE

Please make more than 10cm space between cooler and wall. If there are no space, cooling capacity can drop down.

DANGER OF
ELECTRICAL
SHOCK

If installation in a damp location is unavoidable, also install an electrical leakage circuit breaker. If no electrical leakage circuit breaker is installed, electrical shock could result.

PROHIBITED

Never hang from the door or climb onto the unit. The unit could tip over or fall and cause material damage or injury.

DISCONNECT
POWER CORD
PLUG FROM
WALL OUTLET

Disconnect the power cord plug from the wall outlet before moving the unit and make sure that the power cord is not damaged during transport. A damaged power cord could result in electrical shock and/or fire

DONT PINCH
FINGERS

Grasp the handle when closing the door. Holding at other positions could result in pinched fingers and injury.

DONT TOUCH

Do not push hand against or apply excessive force to glass surfaces as the glass could break and cause injury.

When disconnecting the power cord plug from the wall outlet, hold at the plug main body close to the outlet. Pulling the cord could cause wire breakage, possible resulting in overheating and fire.

Make sure that the unit does not tip over or fall when it is moved. A falling unit could cause serious injury.

PROHIBITED

Do not throw items onto the shelves and do not place items totaling more than 30kg on each shelf. The shelf could fall down, possibly cause injury.

Be sure attach and secure shelves correctly. An improperly attached shelf could fall down and cause injury.

BEFORE USE

- Remove shipping package, tape, etc and leave doors open ventilation for a while.
- The unit is cleaned before shipment. However, clean the compartment interior once after delivery
- Please insert power supply plug into the wall outlet, single-phase to cat voltage.
- Allow the unit to operate for about 1 hour to cool the compartment before placing items in the cooler

- Restarting the unit immediately after it has been turned off may cause fuses to blow and activate the circuit-breaker, the compressor may be overloaded, and/or other damage may occur

- For showcase cooler, the interior temp. during fully loaded at factory default setting of position at 4-5 will be kept at 0-10°C. If the ambient temp. is extremely high or the stuffing food inside is too much, that might cause the interior temp. a little bit higher. So, it would be better turn the thermostat right so as to maintain the right temp. On the opposite, if the ambient temp. is very low or empty loaded, or in less food storage, the interior temp. might be able to reach minus 0°C, and in return to cause the evaporator ice up. Thus, it would better switch the thermostat back to left so as to relieve something.

- Defrosting is performed automatically and drain water is collected in the drain tray.
- Water in the drain tray is evaporated automatically. In humidity, large amount of water in the drain tray, so please throw away drain water once a day.

Please follow the below instruction, you could save energy.

- To prevent cold air from escaping, open and close the door quickly and keep the door opened for as short a time as possible.
- Please install the unit in the place which is well-ventilated.

- Arrange the shelves in accordance with the dimensions of the items to be placed in the cooler.

This appliance is not intended for use by persons (including children) with reduced physical, sensory or mental capabilities, or lack of experience and knowledge, unless they have been given supervision or instruction concerning use of the appliance by a person responsible for their safety.

Children should be supervised to ensure that they do not play with the appliance.

If the supply cone is damaged, it must be replaced by the manufacturer, its service agent or similarly qualified persons in order to avoid a hazard.

Do not store explosive substances such as aerosol cans with a flammable propellant in this appliance.

This showcase employs a forced circulation of cold air system. If circulation of cold air is obstructed, the items will not be adequately refrigerated. Pay attention to the following points:

- Do not let items obstruct the cold air inlet and suction outlet.
- Place items so that they do not protrude from the shelves. The gap between the shelves and the door is used for circulation of cold air.
- Place items evenly on all shelves.
- Please do not display goods on the bottom. Please put goods on the shelf.

To prevent any electrical shock hazards or injury by rotating circulation fan, always disconnect the power cord plug from the wall outlet before cleaning.

- Wipe with a soft, dry cloth. If very soiled, wipe with a cloth that has been moistened with a detergent. Then wipe with a cloth that has been dipped in water.

WARNING: Do not splash water directly onto the cooler and do not wash with water. Short-circuit and electrical shock could result.

- Clean the cooler regularly to keep it clean at times. Never use polishing powder, soap powder, benzene, Oil or hot water as these will damage the painting and Plastic components



WARNING: Keep clear of obstruction all ventilation openings in the appliance enclosure or in the structure for building-in.

WARNING: Do not use mechanical devices or other means to accelerate the defrosting process, other than those recommended by the manufacturer.

WARNING: Do not damage the refrigerating circuit.

WARNING: Do not use electrical appliances inside the food/ice storage compartments unless they are of the type recommended by the manufacturer.

To ensure the safety, perform the following checks after cleaning.

- Is the power cord plug firmly inserted into a dedicated wall outlet? Confirm that the plug is not abnormally hot.
- Check the power cord for cracks and damage. Should the slightest irregularity be observed, contact the dealer from whom you purchased this unit or our customer's service.

In case the unit shows operating problems,
check the following prior to calling the authorized service company:

SYMPTOMS	POSSIBLE CAUSE	SOLUTION
The unit is not operating	Faulty electrical contact	Verify electrical connections
	Poor electrical power	Check the power connection and electrical outlet
	Thermostat setting "0"	Change the thermostat setting to a higher number
Not reaching desired temperature	Unit is exposed to direct sun light	Relocate the unit to a shaded area
	Thermostat is not properly adjusted	Adjust the thermostat setting to a higher number
	Clogger condenser	Review Maintenance instructions listed in the manual
	Blocked grills	Clean the grills of any debris collected
	Door not properly closed	Check the leveling of the unit and door seal
	Products poorly distributed or excess product load	Redistribute the product load according Start instructions
	For Models with electronic temperature controller, indicates E0 or E1	Unplug the unit from the outlet. If the error continues, contact an authorized service technician
Abnormal noises	The unit is not properly level	Level the unit following the Installation instructions
	Friction with other objects	Move the unit and avoid contact with other objects
Water on the floor	Drain hose is outside of the drain pan	Locate the hose in the drain pan

- Warranty is valid for one year from the date of purchase.
- The warranty covers defective parts and workmanship. The following items are not covered under warranty:
 1. Loss of products.
 2. Damages caused by transportation.
 3. Damages caused by modifications made by unauthorized individuals.
 4. Fluorescent lights, glass parts or plastic component parts.
- Worn out plugs or defective electrical components.
- Maintenance of the unit.
- Warranty is valid showing the purchase receipt.
- We offer a professional service network which offers the necessary technical support for your unit.

- See contact information in the back of the Manual.