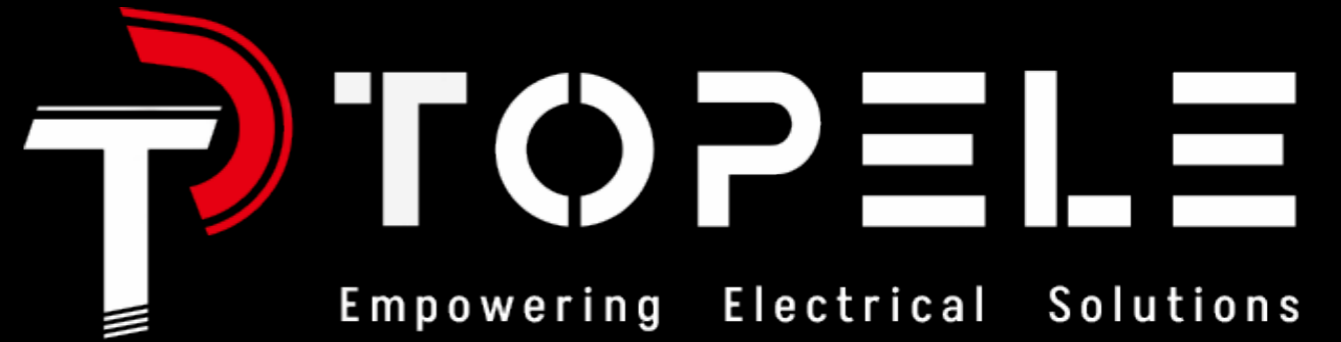


Contact: Mr. Jeff Xu

Tel: 86-0571-82151572/ 86-15924157229 Email: sales@topele.com QQ/Wechat: 893532773 Whatsapp: 0086-15924157229

Address: Room 1106, No.438 JingCheng road, Hangzhou, Zhejiang, China.55



Hangzhou Topele Electrical Co., Limited  
[www.topele.com](http://www.topele.com)



Saudi Arabia Market  
CONDUIT & ACCESSORIES

# EMT Conduit & Fittings

## EMT Conduit ANSI C80.3, UL797

Finish: Pre-galvanized / Hot dip galvanized



Trade Size	Outside Dia.	Wall Thickness			Two Length	
		mm	mm	mm	mm	mm
1/2"	17.93	1.07	1.00	0.80	3000	3050
3/4"	23.42	1.24	1.15	0.90	3000	3050
1"	29.54	1.45	1.35	1.00	3000	3050
1 1/4"	38.35	1.65	1.50	1.30	3000	3050
1 1/2"	44.20	1.65	1.50	1.30	3000	3050
2"	55.80	1.65	1.50	1.40	3000	3050
2 1/2"	73.03	1.83	-	1.60	3000	-
3"	88.90	1.83	-	1.60	3000	-
4"	114.30	2.11	-	1.80	3000	-



UL NO. E506414 E506415



EMT 90° Elbow  
Size: 1/2" to 4"



EMT Set Screw Connector-Zinc  
Size: 1/2" to 4"



EMT Set Screw Coupling-Zinc  
Size: 1/2" to 4"



Steel Locknut  
Size: 1/2" to 6"



Set Screw Connector-Steel  
Size: 1/2" to 4"



Set Screw Coupling-Steel  
Size: 1/2" to 4"



Compression Connector-Steel  
Size: 1/2" to 4"



Compression Coupling-Steel  
Size: 1/2" to 4"



EMT One Hole Strap  
Size: 1/2" to 2"



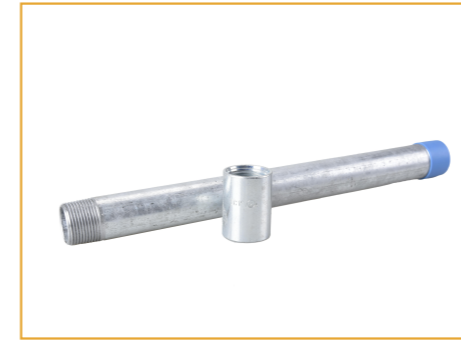
EMT Two Hole Strap  
Size: 1/2" to 2"



Conduit Bushing  
Size: 1/2" to 4"



Grounding Bushing  
Size: 1/2" to 6"



## IMC Conduit ANSI C80.6, UL1242

Finish: Pre-galvanized / Hot dip galvanized

Trade Size	Outside Dia.	Wall Thickness			Two Length	
		mm	mm	mm	mm	mm
1/2"	20.70	1.98	1.79	1.45	3000	3050
3/4"	26.10	2.10	1.90	1.45	3000	3050
1"	32.77	2.35	2.15	1.80	3000	3050
1 1/4"	41.59	2.42	2.16	2.00	3000	3050
1 1/2"	47.82	2.54	2.29	2.00	3000	3050
2"	59.93	2.67	2.41	2.00	3000	3050
2 1/2"	72.57	3.81	3.50	-	3000	-
3"	88.29	3.81	3.50	-	3000	-
4"	113.44	3.81	3.50	-	3000	-



UL NO. E506417



IMC 90° Elbow  
Size: 1/2" to 2"



Rigid 90° Elbow  
Size: 1/2" to 4"



IMC Coupling  
Size: 1/2" to 4"



Rigid Coupling  
Size: 1/2" to 6"



Reducing Bushing  
Size: 1/2" to 4"



Rigid Nipple  
Size: 1/2" to 4"



Rigid Compression Connector  
Size: 1/2" to 2"



Watertight Hub  
Size: 1/2" to 4"



Rigid One Hole Strap  
Size: 1/2" to 4"



Rigid Two Hole Strap  
Size: 1/2" to 4"



Clamp on Entrance Cap  
Size: 1/2" to 4"



Threaded Entrance Cap  
Size: 1/2" to 4"

# RIGID Conduit & Fittings

## Rigid Conduit ANSI C80.1, UL6

Finish: Hot dip galvanized



Trade Size	Outside Dia.	Wall Thickness	Length
inch	mm	mm	mm
1/2"	20.70	2.64	3000
3/4"	26.10	2.72	3000
1"	32.77	3.20	3000
1 1/4"	41.59	3.38	3000
1 1/2"	47.82	3.51	3000
2"	59.93	3.71	3000
2 1/2"	72.57	4.90	3000
3"	88.29	5.21	3000
4"	113.44	5.72	3000
5"	141.30	6.22	3000
6"	168.30	6.76	3000

UL NO. E506418 E506419



**LB Conduit Body**  
Malleable Iron  
Size: 1/2" to 4"



**LL Conduit Body**  
Malleable Iron  
Size: 1/2" to 4"



**LR Conduit Body**  
Malleable Iron  
Size: 1/2" to 4"



**C Conduit Body**  
Malleable Iron  
Size: 1/2" to 4"



**T Conduit Body**  
Malleable Iron  
Size: 1/2" to 4"



**Single Gang W/P Box**  
Outlets: 3 4 5 5X  
Size: 1/2" 3/4"



**Single Gang Deep W/P Box**  
Outlets: 3 4 5X  
Size: 1/2" 3/4" 1"



**Two Gang W/P Box**  
Outlets: 3 4 5 5X 7 7X 9  
Size: 1/2" 3/4" 1"



**Two Gang Deep W/P Box**  
Outlets: 5 7X  
Size: 1/2" 3/4" 1"



**Round W/P Box**  
Outlets: 5 7X  
Size: 1/2" 3/4" 1"



**4x4" Square Box**  
Deep: 1-1/2", 2-1/8"  
K.O.: 1/2" 3/4" 1"



**4" Octagonal Box**  
Deep: 1-1/2", 2-1/8"  
K.O.: 1/2" 3/4" 1"



**4x2" Rectangular Box**  
Deep: 1-7/8", 2-1/8"  
K.O.: 1/2" 3/4" 1"



**4" Octagonal Side Box**  
Deep: 1-3/4"  
K.O.: 1/2" & 3/4"



**4-11/16" Square Box**  
Deep: 2-1/8"  
K.O.: 1/2" 3/4" 1"



4x4" Square Cover



4x4" Square Device Cover



4" Octagonal Cover



4x2" Rectangular Cover



4-11/16" Square Cover

# Flexible Conduit & Fittings

UL NO. E506413



**Galvanized Flexible Conduit**  
Size: 3/8" to 4"



**PVC Coated Flexible Conduit**  
Size: 3/8" to 4"



**Liquid Tight Flexible Conduit**  
Size: 3/8" to 4"



**Straight Squeeze Connector**  
Size: 3/8" to 4"



**90° Squeeze Connector**  
Size: 3/8" to 4"



**Zinc Straight Liquid Tight Connector**  
Size: 3/8" to 4"



**Zinc 90° Liquid Tight Connector**  
Size: 3/8" to 4"



**Screw in Coupling**  
Size: 1/2" 3/4"



**CH Straight Liquid Tight Connector**  
Size: 3/8" to 4"



**CH 90 degree Liquid Tight Connector**  
Size: 3/8" to 4"



**Combination Cable Connector**  
Size: 3/8"



**Romex Connector**  
Size: 1/2" to 1"



**Screw in Connector**  
Size: 3/8" to 1"



**Condulet GUA conduit outlet boxes with covers--GUAT**



**Malleable Iron RIGID 1-Hole Strap**



**Malleable Iron RIGID Coupling Compression Type**



**Malleable Iron RIGID Connector Compression Type**



**Malleable Iron Three-Piece RIGID Conduit Coupling**



**Malleable Iron HDG Cable Supports Body**



**Reducer Coupling**



**Conduit Sealing Fitting**



**Weatherproof Cover**



**Rigid Conduit Grounding Bushing Aluminum Lay in Lug**

# Strut Channel & Fittings

## Unistrut Channel

Finish: Pre-galvanized / Hot dip galvanized  
Slotted / Plain



Trade Size		Wall Thickness	Length
mm	inch	mm	mm
41mmX41mm	1-5/8"X1-5/8"	1.2	3000
41mmX41mm	1-5/8"X1-5/8"	1.5	3000
41mmX41mm	1-5/8"X1-5/8"	1.9	3000
41mmX41mm	1-5/8"X1-5/8"	2.0	3000
41mmX41mm	1-5/8"X1-5/8"	2.5	3000
41mmX21mm	1-5/8"X13/16"	1.2	3000
41mmX21mm	1-5/8"X13/16"	1.5	3000
41mmX21mm	1-5/8"X13/16"	1.9	3000
41mmX21mm	1-5/8"X13/16"	2.0	3000
41mmX21mm	1-5/8"X13/16"	2.5	3000

UL NO. E489690



**Clevis Hanger**  
Size: 1/2" to 30"



**Swivel Band**  
Size: 1/2" to 8"



**Riser Clamp**  
Size: 1/2" to 20"



**Strut Clamp**  
Size: 1/2" to 8"



**Conduit Hanger**  
Size: 1/2" to 4"



**Pipe Clamp with Rubber**  
Size: 3/8" to 8"



**Pipe Attachment**  
Size: 2" to 8"



**U Bolts Beam Clamp**  
Size: 3-3/8" , 5"



**Universal Beam Clamp**  
Size: 3/8" , 1/2"



**Wide Mouth Beam Clamp**  
Size: 3/8" , 1/2"



**Insulator Support Beam Clamp**  
Size: 1/4" , 3/8" , 1/2"



**All Thread Rods**  
Size: 1/4" to 1"



**Spring Nut**  
Size: 1/4" to 1"



**Rod Coupling**  
Size: 1/4" to 7/8"



**Drop in Anchor**  
Size: 1/4" to 3/4"



**Rod Hanger**  
Size: 3/8"



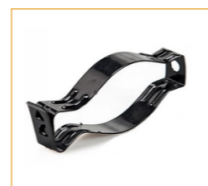
**Flat Washer**  
Size: 1/4" to 7/8"



**Square Washer**  
Size: 1/4" to 7/8"

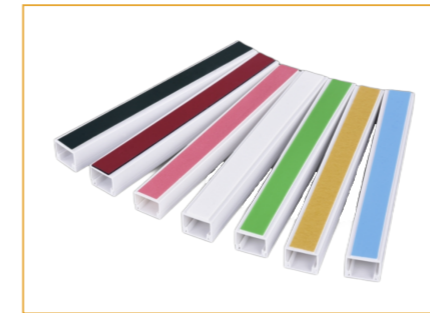


**U Bolts**  
Size: 1/2" to 24"



**Conduit Fastener**  
Size: 1/2" to 2"

# PVC Cable & Boxes



## PVC Cable Trunking with adhesive

9 X 5	10 X 10	12 X 8	12 X 12	14 X 7
15 X 10	16 X 16	20 X 10	24 X 14	24 X 14
25 X 25	30 X 13	30 X 15	30 X 20	39 X 19
40 X 16	40 X 25	40 X 30	40 X 40	50 X 25



## PVC Cable Trunking with adhesive

Trade Size	Wall Thickness	Tolerance
mm	mm	mm
Ø 16	0.9 / 1.0 / 1.1 / 1.2 / 1.3	-0.10
Ø 20	1.0 / 1.1 / 1.2 / 1.3 / 1.4 / 1.5 / 1.8 / 2.0	-0.10
Ø 25	1.0 / 1.1 / 1.2 / 1.3 / 1.4 / 1.5 / 1.8 / 2.0	-0.10
Ø 32	1.0 / 1.1 / 1.2 / 1.3 / 1.4 / 1.5 / 2.0 / 2.3	-0.10
Ø 40	1.2 / 2.0	-0.10
Ø 50	1.2 / 1.4 / 2.0	-0.10
Ø 60	1.5	-0.10
Ø 80	1.6 / 2.0	-0.10
Ø 100	1.8 / 2.0	-0.10
Ø 110	2.1 / 2.5 / 2.8 / 3.2	-0.10
Ø 125	2.0 / 3.0 / 3.5	-0.10



**PVC Round Box**  
Size: Ø 20, Ø 25



**PVC Stopend Box**  
Size: Ø 20, Ø 25



**PVC Through Box**  
Size: Ø 20, Ø 25



**PVC Angle Box**  
Size: Ø 20, Ø 25



**PVC Tee Box**  
Size: Ø 20, Ø 25



**PVC Four Way Box**  
Size: Ø 20, Ø 25



**PVC U Box**  
Size: Ø 20, Ø 25



**PVC Y Box**  
Size: Ø 20, Ø 25



**PVC 3X3 Switch Box**



**PVC 3X6 Switch Box**