

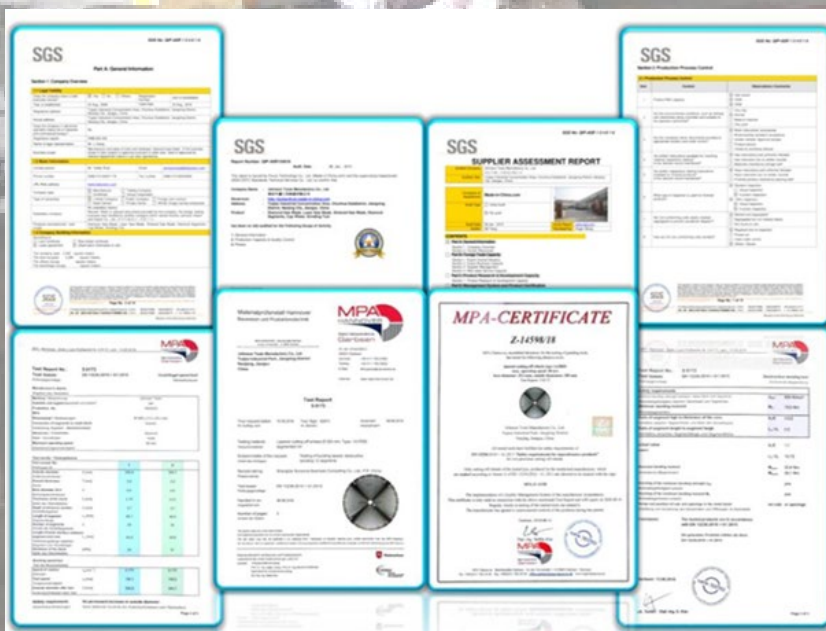
# JOHNSON TOOLS

## One-stop Diamond Tools

# About us

Since 2000 year, our company Johnson Tools Manufactory Co.,Ltd started to manufacture and export diamond tools for stone working and construction industry for worldwide countries. Since 2005 year, we established our own import and export company, named Johnson Import and Export Co.,Ltd.

We enjoy good reputation among customers with trustworthy product quality and creditable service. Provide good quality diamond tools on sawing, drilling, grinding and polishing, profiling industry.



## CUTTING

WALL SAW & PRECAST CONCRETE SAW .....	1
CONCRETE SAW BLADE .....	2
ASPHALT SAW BLADE .....	3
GENERAL PURPOSE SAW BLADE .....	4-5
MARBLE SAW BLADE .....	5-6
GRANITE SAW BLADE .....	7-8
CERAMIC SAW BLADE .....	9
ELECTROPLATED DIAMOND BLADE .....	10

## GRINDING

DIAMOND CUP WHEEL.....	11
DIAMOND GRINDING WHEEL.....	12

## DRILLING

CORE DRILL BITS .....	13
ENGINEERING CORE BITS .....	14
VACUUM BRAZED DIAMOND CORE BITS .....	15

## POLISHING

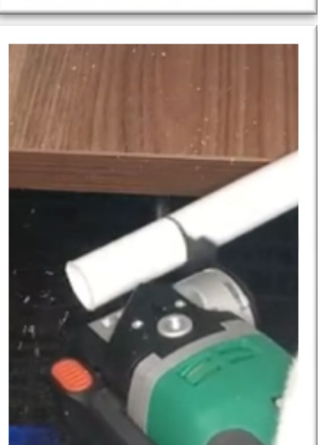
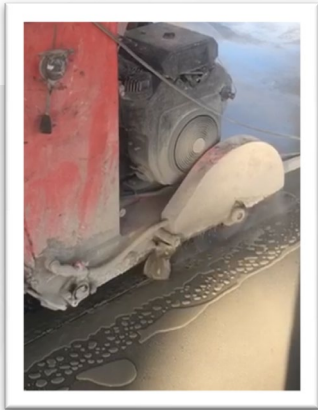
POLISHING PAD .....	16-19
---------------------	-------

## PROFILING

VACUUM BRAND PROFILING BITS .....	20
DIAMOND PROFILING WHEEL .....	21

## OTHERS

TC ABRASIVE DISC.....	22
OSCILLATING MULTI TOOLS .....	23







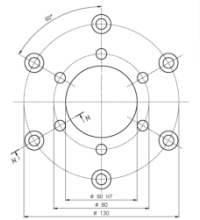
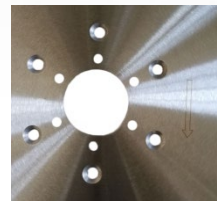
## WALL SAW BLADE

Application: Cured concrete, Reinforced Concrete, Heavy Reinforced Concrete, etc.

Advantage: Laser welded, safety. Steel discs adopt the world's Largest steel discs factory. High grade diamond and other metal powder.

### Spec.

Item No.	Diameter Inch	Segment size	Hole
LWS-600	24"	40x4.8/5x12mm	25.4/60
LWS-700	28"	40x4.8/5x12mm	25.4/60
LWS-800	32"	40x4.8/5x12mm	25.4/60
LWS-900	36"	40x4.8/5x12mm	25.4/60
LWS-1000	40"	40x4.8/5x12mm	25.4/60
LWS-1200	48"	40x4.5/4.8/5x12mm	25.4/60
LWS-1400	56"	40x4.5/4.8/5x12mm	25.4/60
LWS-1500	60"	40x4.5/4.8/5x12mm	25.4/60
LWS-1600	64"	40x4.5/4.8/5x12mm	25.4/60



Other pin hole can be done.

## PRECAST CONCRETE SAW BLADE

Application: Special design for cutting Precast (Presressed) Concrete Hollow Slab and Railway Sleeper.

Advantage: Laser welded, safety. Long cutting life. Steel discs adopt the world's Largest steel discs factory. High grade diamond and other metal powder.

### Spec.

Item No.	Diameter (mm)	Length (mm)	segment width(mm)	segments teeth (pcs)	Hole
LPS-700	600	40	5	42	60/80
LPS-800	700	40	6.5	50	60/80
LPS-900	800	40	6.5	57	60/80
LPS-1000	900	40	6.5	64	60/80
LPS-1100	1000	40	7	70	60/80
LPS-1200	1100	40	7.5	74	60/80
LPS-1300	1200	40	8	80	60/80
LPS-1400	1300	40	8	88	60/80



Other segment width, center hole can be done.  
Silent type saw blade can be done.



### Laser welded diamond saw blade for cured concrete

Application: cutting concrete, cured concrete, old concrete, bricks and etc..

Advantage: Laser welded, safety. Fast and smooth cutting. Steel discs adopt the world's Largest steel discs factory. High grade diamond and other metal powder.

#### Spec.

Item No.	Diameter Inch	Segment size	Hole
LCC-300	12"	40x3.0x10/12mm	25.4
LCC-350	14"	40x3.2x10/12mm	25.4/27
LCC-400	16"	40x3.4x10/12mm	25.4/27
LCC-450	18"	40x3.6x10/12mm	25.4/27
LCC-500	20"	40x4.0x10/12mm	25.4/27
LCC-600	24"	40x4.4x10/12mm	25.4/27



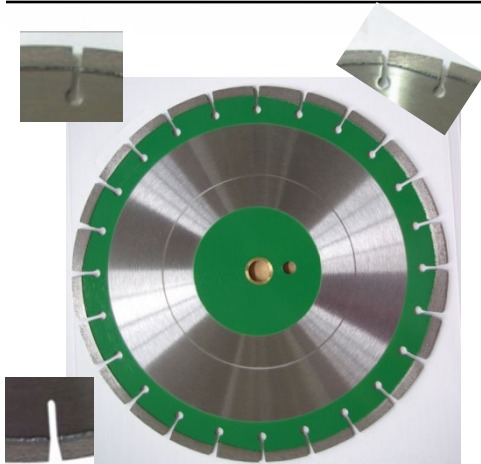
### Laser welded diamond saw blade for reinforced concrete

Application: cutting reinforced concrete , reinforced concrete bricks and etc..

Advantage: Laser welded, safety. Long cutting life. Steel discs adopt the world's Largest steel discs factory. High grade diamond and other metal powder.

#### Spec.

Item No.	Diameter Inch	Segment size	Hole
LCC-300	12"	40x3.0x10/12mm	25.4
LCC-350	14"	40x3.2x10/12mm	25.4/27
LCC-400	16"	40x3.4x10/12mm	25.4/27
LCC-450	18"	40x3.6x10/12mm	25.4/27
LCC-500	20"	40x4.0x10/12mm	25.4/27
LCC-600	24"	40x4.4x10/12mm	25.4/27



### Ring saw blade

Application: cutting concrete, cured concrete with light/medium reinforced etc.

Advantage: Laser welded, safety. Fast and smooth cutting. Steel discs adopt the world's Largest steel discs factory. High grade diamond and other metal powder.

#### Spec.

Item No.	Diameter Inch	Segment size	Hole
LRI-350	14"	40x4.0x8/10mm	288



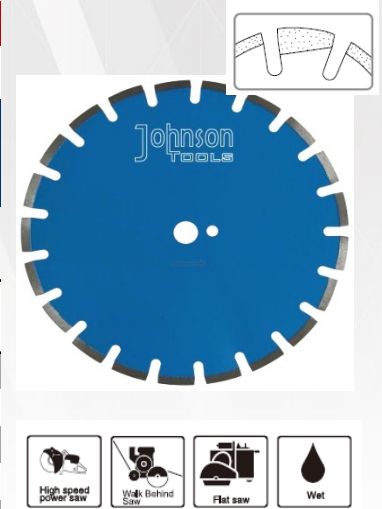
### Laser welded diamond saw blade for asphalt

Application: Cutting asphalt road surface.

Advantage: Laser welded, High welding strength, safety. Long cutting life. Steel discs adopt the world's Largest steel discs factory. High grade diamond and other metal powder.

#### Spec.

Item No.	Diameter Inch	Segment size	Hole
LAS-T02-350	14"	40x3.2x10/12mm	25.4/27
LAS-T02-400	16"	40x3.4x10/12mm	25.4/27
LAS-T02-450	18"	40x3.6x10/12mm	25.4/27
LAS-T02-500	20"	40x4.0x10/12mm	25.4/27
LAS-T02-550	18"	40x4.0x10/12mm	25.4/27
LAS-T02-600	24"	40x4.4x10/12mm	25.4/27



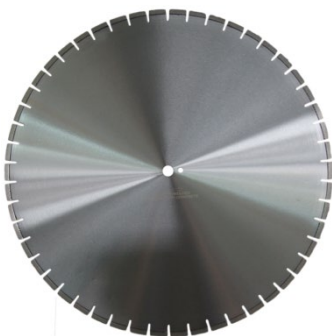
### Laser welded diamond saw blade for asphalt over concrete

Application: cutting asphalt over concrete

Advantage: Laser welded, High welding strength, safety. Long cutting life. Steel discs adopt the world's Largest steel discs factory. High grade diamond and other metal powder.

#### Spec.

Item No.	Diameter Inch	Segment size	Hole
LAOC-T02-350	14"	40x3.2x10/12mm	25.4/27
LAOC-T02-400	16"	40x3.4x10/12mm	25.4/27
LAOC-T02-450	18"	40x3.6x10/12mm	25.4/27
LAOC-T02-500	20"	40x4.0x10/12mm	25.4/27
LAOC-T02-550	18"	40x4.0x10/12mm	25.4/27
LAOC-T02-600	24"	40x4.4x10/12mm	25.4/27
LAOC-T02-650	26"	40x4.8x10/12mm	25.4/27
LAOC-T02-750	30"	40x5.0x10/12mm	25.4/50
LAOC-T02-800	32"	40x5.0x10/12mm	25.4/50
LAOC-T02-900	36"	40x5.0x10/12mm	25.4/50
LAOC-T02-1000	40"	40x5.0x10/12mm	25.4/50
LAOC-T02-1200	48"	40x5.0x10/12mm	25.4/50





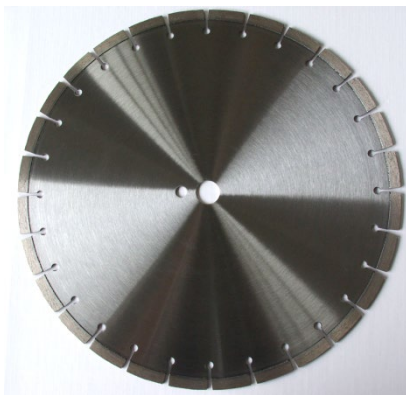
### Laser welded diamond saw blade for general purpose

Application: cutting various stone, concrete, reinforced concrete, bricks and other materials

Advantage: Laser welded, safety. Long cutting life. Steel discs adopt the world's Largest steel discs factory. High grade diamond and other metal powder.

#### Spec.

Item No.	Diameter Inch	Segment size	Hole
LGP-105	4"	31x2.2x8/10mm	16/20
LGP-115	4.5"	31x2.2x8/10mm	16/20
LGP-125	5"	31x2.2x8/10mm	16/20
LGP-150	6"	34x2.4x8/10mm	22.23
LGP-180	7"	34x2.4x8/10mm	22.23
LGP-200	8"	40x2.4x8/10mm	22.23
LGP-230	9"	37x2.6x8/10mm	22.23
LGP-250	10"	37x2.6x8/10mm	22.23
LGP-300	12"	40x3.0x8/10mm	25.4
LGP-350	14"	40x3.2x10/12mm	25.4
LGP-400	16"	40x3.4x10/12mm	25.4



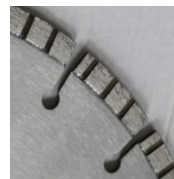
### Laser welded hand held saw blade.

Application: Concrete, brick, block, masonry, and stone.

Advantage: Laser welded, safety. Long cutting life. Steel discs adopt the world's Largest steel discs factory. High grade diamond and other metal powder.

#### Spec.

Item No.	Diameter Inch	Segment size	Hole
LHS-300	12"	40x3.0x7/10mm	25.4
LHS-350	14"	40x3.2x10/12mm	25.4
LHS-400	16"	40x3.4x10/12mm	25.4







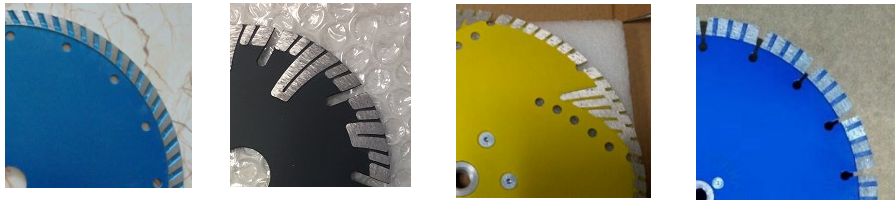
**Sintered saw blade for general purpose**

Application: cutting for concrete/marble/granite and other stone

Advantage: Fast cutting and long life

**Spec.**

Item No.	Diameter Inch	Segment size	Hole
SGP-105	4"(105mm)	1.8x10mm	16/20
SGP-110	4.3"(110mm)	1.8x10mm	16/20
SGP-115	4.5"(115mm)	1.8x10mm	20/22.23
SGP-125	5"(125mm)	1.8x10mm	20/22.23
SGP-150	6"(150mm)	2x10mm	20/22.23
SGP-180	7"(180mm)	2x10mm	20/22.23
SGP-200	8"(200mm)	2.2x10mm	20/22.23
SGP-230	9"(230mm)	2.2x10mm	20/22.23
SGP-250	10"(250mm)	2.2x10mm	20/25.4
SGP-300	12"(300mm)	3.0x10mm	20/25.4
SGP-350	14"(350mm)	3.2x10mm	25.4



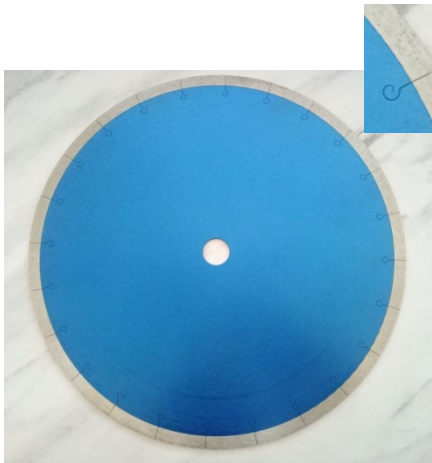
**Sintered saw blade for marble**

Application: Special design for cutting marble, smooth and fast cutting

Advantage: high efficiency cutting and exceptional blade life

**Spec.**

Item No.	Diameter Inch	Segment size	Hole
SBS-105	4"(105mm)	1.8x10mm	16/20
SBS-115	4.5"(115mm)	1.8x10mm	20/22.23
SBS-125	5"(125mm)	1.8x10mm	20/22.23
SBS-180	7"(180mm)	1.8x10mm	20/22.23
SBS-200	8"(200mm)	2.0x10mm	20/22.23
SBS-230	9"(230mm)	2.0x10mm	20/22.23
SBS-250	10"(250mm)	2.2x10mm	20/25.4
SBS-300	12"(300mm)	2.2x10mm	20/25.4
SBS-350	14"(350mm)	2.6x10mm	25.4





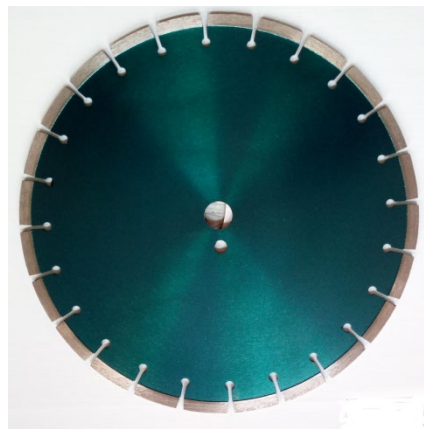


**Silver Brazed diamond saw blade for marble**

Application: Marble cutting.  
Advantage: No chipping, faster cutting speed, lower noise. Very good cutting results for marble which is difficult to cut.

**Spec.**

Item No.	Diameter Inch	Segment size	Hole
SWM-300	12"	40/42x2.8x8mm	50/60
SWM-350	14"	40/42x2.8x8mm	50/60
SWM-400	16"	40/42x3.0x8mm	50/60
SWM-450	18"	40/42x3.8x8mm	50/60
SWM-500	20"	40/42x3.8x8mm	50/60
SWM-600	24"	40/42x3.8x8mm	50/60

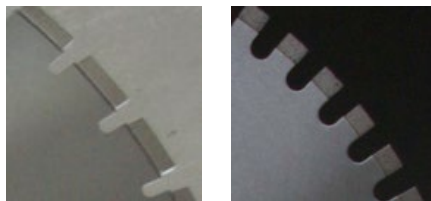


**Laser welded diamond saw blade for sandstone**

Application: Sandstone cutting.  
Advantage: excellent cutting speed, less chipping.

**Spec.**

Item No.	Diameter Inch	Segment size	Hole
BDS-350	14"	40x3.2x12/15mm	25.4/50
BDS-400	16"	40x3.4x12/15mm	25.4/50
BDS-450	18"	40x3.6x12/15mm	25.4/50
BDS-500	20"	40x4.0x12/15mm	25.4/50
BDS-600	24"	40x4.4x12/15mm	25.4/50
BDS-800	32"	40x5.5x12/15mm	50/60
BDS-900	36"	40x6.0x12/15mm	50/60
BDS-1000	40"	24x7.0x12/15mm	50/60
BDS-1200	48"	24x7.0x12/15mm	50/60
BDS-1400	56"	24x7.0x12/15mm	50/60
BDS-1600	64"	24x8.0x12/15mm	50/60
BDS-1800	72"	24x9.0x12/15mm	50/60



MARBLE & SANDSTONE SAW BLADE



Johnson  
TOOLS



## Laser welded diamond saw blade for granite

Application: cutting stone, granite, limestone, and so on.

Advantage: Laser welded, safety. Long cutting life. Steel discs adopt the world's Largest steel discs factory. High grade diamond and other metal powder. Silent blade available.

### Spec.

Item No.	Diameter Inch	Segment size	Hole
LSG-300	12"	40x3.0x7/10mm	25.4/50
LSG-350	14"	40x3.2x10/12mm	25.4/50
LSG-400	16"	40x3.4x10/12mm	25.4/50
LSG-450	18"	40x3.6x10/12mm	25.4/50
LSG-500	20"	40x4.0x10/12mm	25.4/50
LSG-600	24"	40x4.4x10/12mm	25.4/50

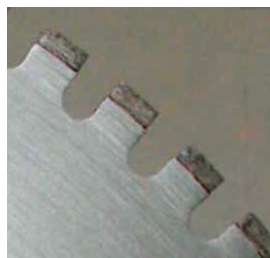
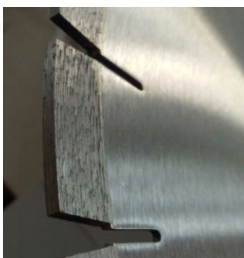
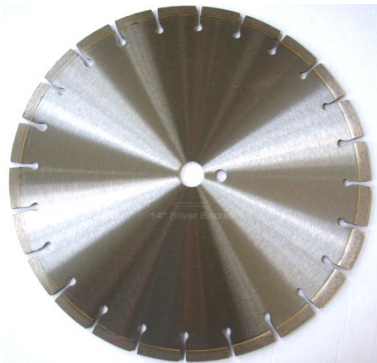
## Silver Brazed diamond saw blade for granite

Application: cutting stone, granite, limestone, and so on.

Advantage: excellent cutting speed, can cut about 350m<sup>2</sup> when cutting medium hard slab in 2cm thickness on 11kW power bridge cutting machine, less chipping.

### Spec.

Item No.	Diameter Inch	Segment size	Hole
SWG-300	12"	39x3.2x13mm	50/60
SWG-350	14"	40x3.3x12/15mm	50/60
SWG-400	16"	40x3.8x12/15mm	50/60
SWG-450	18"	40x4.4x10/12/15mm	50/60
SWG-500	20"	40x4.4x10/12/15mm	50/60
SWG-600	24"	40x4.9x10/12/15mm	50/60
SWG-800	32"	40x6.2x10mm	50/60
SWG-900	40"	40x7.0x10mm	50/60
SWG-1000	48"	40x7.0x10mm	50/60



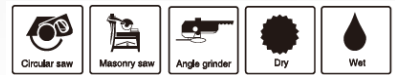


**Sintered turbo blade for granite(hot press)**

Application: cutting granite, black granite, galaxy granite, etc.  
 Advantage: high efficiency cutting and exceptional blade life

**Spec.**

Item No.	Diameter Inch	Segment size	Hole
STGR-110	4"(110mm)	2x10mm	16/20
STGR-115	4.5"(115mm)	2x10mm	16/20
STGR-125	5"(125mm)	2.2x10mm	20/22.23
STGR-180	7"(180mm)	2.4x10mm	20/22.23
STGR-230	9"(230mm)	2.6x10mm	20/22.23



**Sintered concave saw blade for granite**

Application: cutting granite, black granite, galaxy granite, etc.  
 Advantage: high efficiency cutting and exceptional blade life

**Spec.**

Item No.	Diameter Inch	Segment size	Hole
SSP04-115	4.5"(115mm)	2.2x8mm	16/20
SSP04-125	5"(125mm)	2.2x8mm	20/22.23
SSP04-180	7"(180mm)	2.4x8mm	20/22.23



S  
I  
N  
T  
E  
R  
E  
D  
  
D  
I  
A  
M  
O  
N  
D  
  
S  
A  
W  
  
B  
L  
A  
D  
E  
  
F  
O  
R  
  
G  
R  
A  
N  
I  
T  
E





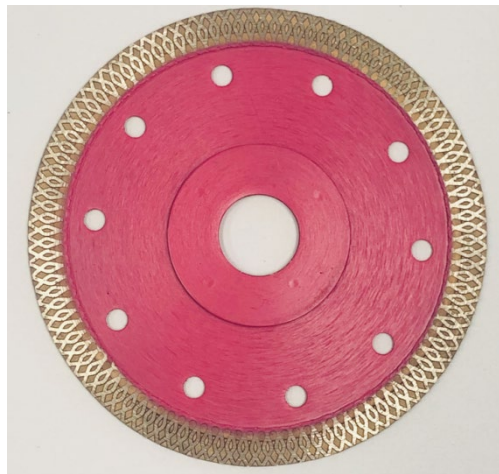
### Sintered continuous saw blade for ceramic

Application: cutting for different kinds of ceramic, tiles, porcelain.

Advantage: Fast cutting and no chipping

#### Spec.

Item No.	Diameter Inch	Segment size	Hole
SCCE-105	4"(105mm)	1.6x10mm	16/20
SCCE-110	4.3"(110mm)	1.6x10mm	16/20
SCCE-115	4.5"(115mm)	1.6x10mm	20/22.23
SCCE-125	5"(125mm)	1.6x10mm	20/22.23
SCCE-150	6"(150mm)	1.8x10mm	20/22.23
SCCE-180	7"(180mm)	1.8x10mm	20/22.23
SCCE-200	8"(200mm)	2.0x10mm	20/22.23
SCCE-230	9"(230mm)	2.0x10mm	20/22.23
SCCE-250	10"(250mm)	2.6x10mm	20/25.4
SCCE-300	12"(300mm)	2.8x10mm	20/25.4
SCCE-350	14"(350mm)	3.0x10mm	25.4



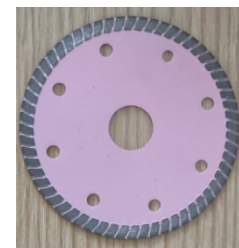
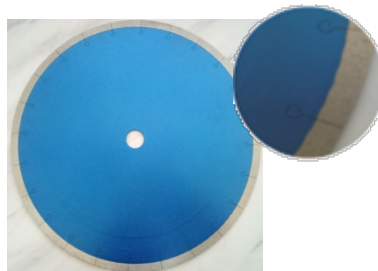
### Sintered Mesh Turbo saw blade for ceramic

Application: cutting for Ceramic/porcelain/tile and others

Advantage: Fast cutting and no chipping.

#### Spec.

Item No.	Diameter Inch	Segment size	Hole
SJCE-105	4"(105mm)	1.2x10mm	16/20
SJCE-115	4.5"(115mm)	1.2x10mm	16/20
SJCE-125	5"(125mm)	1.2x10mm	20/22.23
SJCE-150	6"(150mm)	1.5x10mm	20/22.23
SJCE-180	7"(180mm)	1.7x10mm	22.23
SJCE-230	9"(230mm)	1.9x10mm	22.23/25.4
SJCE-250	10"(250mm)	1.9x10mm	22.23/25.4
SJCE-300	12"(300mm)	2.1x10mm	22.23/25.4
SJCE-350	14"(350mm)	2.3x10mm	22.23/25.4





**Electroplated Diamond Blade**

Application: mainly used for marble, granite, glass, ceramic and other materials.

Description:  
Electroplated diamond blades belong to electroplated tools, they are widely used to cutting and grinding on marble or granite. We have continuous rim type and segmented type for choice. Our electroplated saw blades usually have center hole with 22.23mm, but we can also prepare flange for you or make flange holes on electroplated diamond saw blades.

Spec.:

Dia.	Grit	Arbor Hole
105mm	#30/35, #40/45; #50/60, #70/80, and so on	16, 20, 22.23, M14 flange, 22.23 flange
115mm		
125mm		
150mm		
180mm		
230mm		
300mm		



ELECTROPLATED DIAMOND BLADE





### Single row cup wheel

Application: Masonry, Natural Stone grinding

**Description:**  
 1.Hole: circular hole or M14, 5/8"-11 thread  
 2.Technology: sintered or silver brazed type  
 3.Advantage: fast grinding speed and great durability

**Spec.:**

Item No.	Size	Inner hole
CWS-105	105x5	22.23
CWS-115	115x5	22.23
CWS-125	125x5	22.23
CWS-180	180x5	22.23



### Double row cup wheel

Application: Masonry, Natural Stone grinding

**Description:**  
 1.Hole: circular hole or M14, 5/8"-11 thread  
 2.Technology: sintered or silver brazed type  
 3.Advantage: fast grinding speed and great durability

**Spec.:**

Item No.	Size	Inner hole
CWS-105	105x5	22.23
CWS-115	115x5	22.23
CWS-125	125x5	22.23
CWS-180	180x5	22.23

### Diamond turbo wheel

Application: Masonry, Natural Stone grinding

**Description:**  
 1. Hole: circular hole or M14, 5/8"-11 thread  
 2. Technology: sintered or silver brazed type  
 3. Advantage: fast grinding speed and great durability

**Spec.:**

Item No.	Size	Inner hole
CWT-105	105x5	22.23
CWT-115	115x5	22.23
CWT-125	125x5	22.23
CWT-180	180x5	22.23



D  
I  
A  
M  
O  
N  
D  
  
C  
U  
P  
  
W  
H  
E  
E  
L





### Diamond boomerang shaped grinding wheel

Application: Natural Stone&concrete grinding

Description:

1.Hole: 22.23mm, other size just according to your request

2.Technology: Silver brazed type

3.Advantage: fast grinding speed and great durability

Spec.:

Item No.	Segment size(Lx H x T)	Teeth
GWB-125	50x6.2x7	7
GWB-150	50x6.2x7	7



### Diamond grinding disc

Application: concrete

Description:

1. Hole: 22.23mm, other size just according to your request

2. Technology: silver brazed type

3. Advantage: fast grinding speed and great durability

Spec.:

Item No.	Segment size(Lx T x H)	Nos.
GD01-250	60x8x7	20



### Diamond grinding disc&Grinding block



## Diamond Drill Bits For Stone

Application: For stone drilling, such as marble, granite, sandstone, limestone, etc..

Equipment: Used with core drilling machines or hand machines.

Spec. :

Item	Diameter mm	Segment Height	Teeth Type	Thread
1	6.5-35	8 / 10	Crown	Shaft, M14, 5/8"-11
2	40-85	8 / 10	Flat / Turbo	Shaft, M14, 5/8"-11
3	100-150	8 / 10	Flat / Turbo	M14, 5/8"-11



Crown



Flat



Turbo



## Dry Core Bits For Stone

Application: For stone drilling, such as marble, granite, sandstone, limestone, etc..

Equipment: Used with core drilling machines or hand machines.

Spec. :

Item	Diameter mm	Segment Height	Teeth Type	Protect Teeth	Thread
1	6-18	10	Crown	—	M14, 5/8"-11
2	20-32	10	Crown	4(O)2(I)	M14, 5/8"-11
3	35-100	10	Flat/Turbo	4(O)2(I)	M14, 5/8"-11



## Wet Concrete Core Bits

Application: concrete, cured concrete, reinforced concrete, brick, block and etc..

Equipment: Used with core drilling machines or hand machines.

Spec. :

Production Technology	Diameter mm	Segment Height	Teeth Type	Working Length	Thread
Laser Welded	25-32	10	Flat	450	1-1/4" UNC, 1/2" GAS
Laser Welded	42-350	10	Turbo, Grit	450	1-1/4" UNC, 1/2" GAS
Silver Welded	400-600	10	Turbo, Grit	450	1-1/4" UNC, 1/2" GAS



normal segment type



turbo segment type



grit segment type



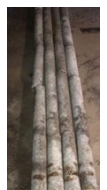
## Dry Concrete Core Bits

Application: Application: concrete, cured concrete, reinforced concrete, brick, block and etc.. For dry application.

Equipment: Used with core drilling machines or hand machines.

Spec. :

Item	Diameter mm	Segment Height	Teeth Type	Length mm	Thread
1	32-182	10	Turbo	150	M16





## Vacuum Brazed Diamond Core Bits

**Application:** Designed for professional contractors who demand the very fast drilling all kinds of ceramic, porcelain, stone materials. Capable of drilling clean hole.

**Equipment:** For Angle grinder,  $\geq 2800\text{PRM}$

**Spec. :**

Item	Diameter mm	Segment Height	Thread
1	6-20	10	Hex, M14, 5/8"-11
2	20-80	15	Hex, M14, 5/8"-11
3	80-180	15	M14, 5/8"-11





## Diamond dry polishing pad

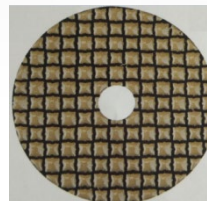
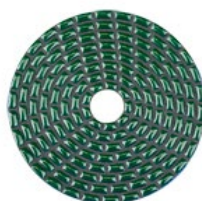
Application: Masonry, marble, granite floor

### Description:

1. Super flexible, fast speed, high-gloss finish
2. Dry for granite
3. 7steps: matt & color; shine & color;

### Spec.:

Item No.	Thickness(mm)	Grit size
DPD-100	1.1	#50, #100, #200, #400, #800, #1500, #3000
DPD-125		
DPD-150		
DPD-180		



## Diamond wet polishing pad

Application: Masonry, marble, granite floor

### Description:

1. Material: Resin bond
2. Removing scratches
3. Smoothing out irregular surfaces

### Spec.:

Item No.	Thickness(mm)	Grit size
WPD-75	2.5-3mm	#50, #100, #200, #400, #800, #1500, #3000 and buff-black or white
WPD-100		
WPD-125		
WPD-150		
WPD-180		







## Diamond concrete polishing pad

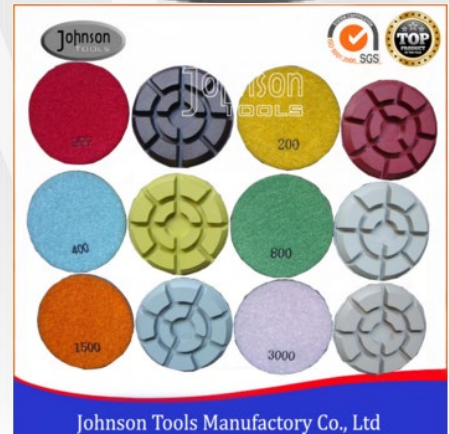
Application: Concrete floor

### Description:

- 1.Material: resin bond with diamond
- 2.Designed to give high quality finishes
- 3.For the coarse surface of the concrete

### Spec.:

Item No.	Thickness(mm)	Grit size
COPD-75	11mm	#50, #100, #200, #400, #800, #1500
COPD-100		, #3000 and buff



## Diamond convex polishing pad

Application: Masonry, Natural Stone floor

### Description:

- 1.Material: Resin bond.
- 2.Designed for ogee polish or with oval shape stones.
- 3.Smoothing out irregular surfaces

### Spec.:

Item No.	Thickness(mm)	Grit size
CPD-75	2.5	#50, #100, #200, #400, #800, #1500
CPD-100		, #3000

## Diamond drum wheel

Application: Masonry, Natural Stone

### Description:

- 1.Material: Resin bond.
- 2.Designed for grinding sink holes on different kinds of stones.
- 3.Excellent for polishing sink cut-outs

### Spec.:

Item No.	Thread	Grit size
DRWH-50	M14	#50, #100, #200, #400, #800, #1500, #3000 and buff
DRWH-75	M14	







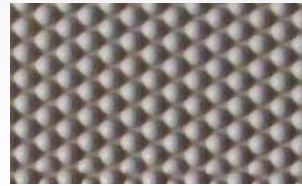
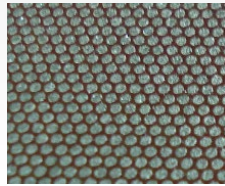
## Diamond hand polishing pad

Application: Masonry, Natural Stone floor

- 1.Type: resin and electroplated type
- 2.designed to give high quality finishes for stone
- 3.removing scratches
- 4.Smoothing out irregular surfaces

### Spec.:

Item No.	Type	Size	Grit size
HPD-01	Rein bond	90x55mm	#800, #1800, #3500
HPD-02	Electroplated		#60, #120, #200, #400



electroplated type

resin type



## Diamond electroplated lapping paper

Application: stone polishing

### Description:

- 1.Designed for grinding or polishing the coarse part of the stone
- 2.removing scratches
- 3.Smoothing out irregular surfaces

### Spec.:

Item No.	Size	Grit size
ELP-50	180x120mm	#60, #120, #220, #400

## Diamond triangle corner polishing pad

Application: Masonry, Natural Stone floor

- 1.Type: resin and electroplated type
- 2.designed to give high quality finishes for stone
- 3.removing scratches
- 4.Smoothing out irregular surfaces

### Spec.:

Item No.	Type	Size	Grit size
TPD-01	Rein bond	80x80x80	#800, #1800, #3500
TPD-02	Electroplated		#60, #120, #200, #400





## Diamond sponge polishing pad

Application: concrete, marble, granite, terrazzo floors and natural stones

1. Specially designed for grout-protection floor, made for High Speed Grinding Equipment.
2. Most effective and lower labor costs.

### Spec.:

Item No.	Size	Thickness	Grit size
SPD	3"-27"	25mm	#400, #800, #1500, #3000



## Diamond concrete polishing pad

Application: Concrete floor

- Description:**
1. Ceramica bond
  2. Sharp type, very aggressive, remove scratch very quickly and easily
  3. High gloss finish, never color the concrete floor
  4. Dry use

### Spec.:

Item No.	Thickness(mm)	Grit size
COPD-75	8mm	#50, #100, #200, #400, #800, #1500, #3000

## Back-up holder for polishing pad

Application: Install on polishing pad

- Description:**
1. Thread with M14 or 5/8"-11
  2. Standard exporting packaging

### Spec.:

Item No.	Type	Size Available
PDH-01	Rubber	3", 4", 5"
PDH-02	Aluminum	3", 4", 5", 6", 7"





# Vacuum Brazed Hand profile wheels

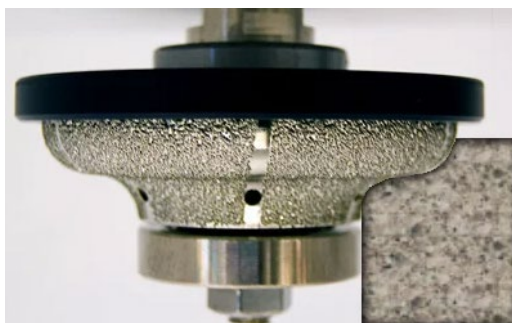
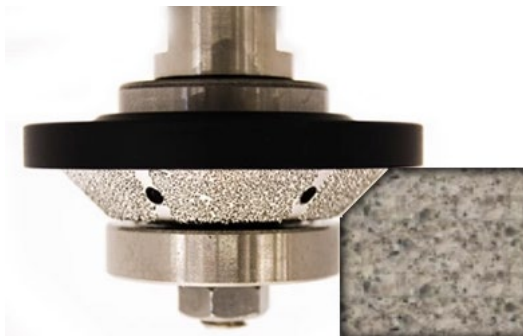
Application: mainly used for various granite and marble, also can used in concrete grinding.

Description:

1. Fast aggressive removal and shaping with great tool life on marble, granite and many other soft stone.
2. Small grinding gap and no chipping.
3. Production strictly according to customer requirements.
4. All kind of shapes stone can be designed

## Spec.:

Dia.	Thickness	Thread
65mm	5-50mm	5/8"-11, M14
75mm		
85mm		
95mm		
105mm		







## Diamond Profiling Wheel(Sintered, Electroplated, Resin, Sponge)

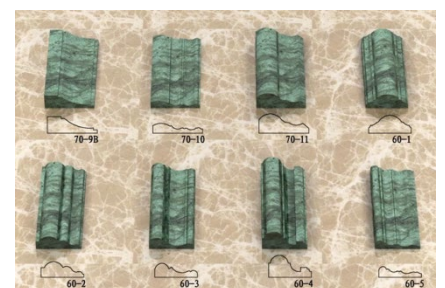
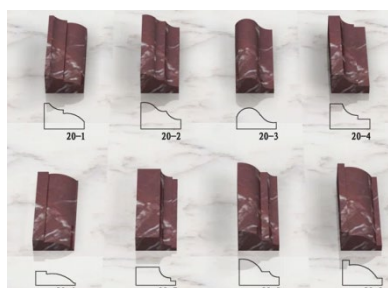
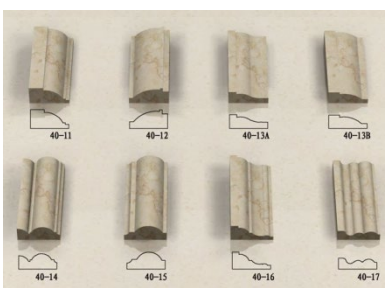
Application: mainly used for shaping the edge or curving line for various granite, marble and other stone.

### Description:

We have different shapes and design for various need from our customers, and we accept customized design if you have drawing of profile wheels you need. Profiling stones with water can be more efficient and water can cool down during the profiling.

### Spec.:

Dia.	Thickness	Shape
140mm	5-150mm	As your request
200mm		
300mm		
350mm		



## Tungsten Carbide Buffing Grinding discs

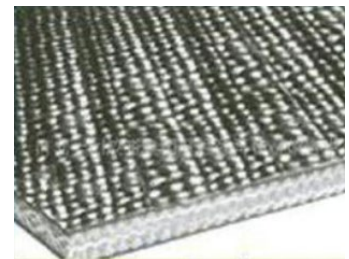
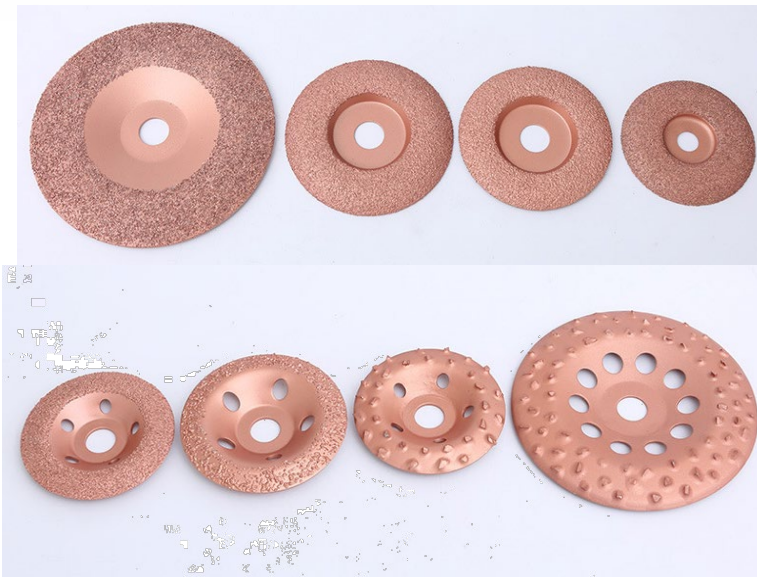
Application: roughing Rubber , Fabric and so on

### Description:

Tungsten Carbide Buffing Grinding Disc is well designed for buffing rubber and fabric, make the surface rougher to increase the bonding effect.

### Spec.:

Item No.	Size	Grit
TCD-115	115	20/25, 25/30, 30/35, 35/40,
TCD-125	125	40/50, 50/60, 70/80, 80/100,
TCD-180	180	100/120







## Oscillating Multi Tool Blade

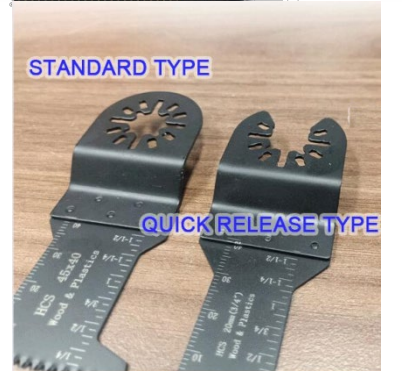
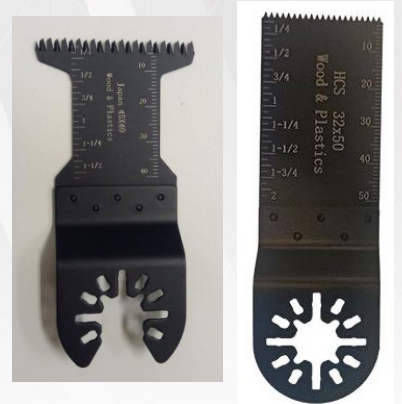
Application: Plastic, wood, rubber and soft metal

### Description:

- 1) Univesal quick release system, fit to most machines of Bosch Fein Dremel Makita Milwaukee Einhell Skil.
- 2) One sets contains two size use mostly, for cutting wood, plastic pipe, nails, soft metals, never found the cut so easy!
- 3) Supreme quality, strict quality control, each Bi-Metal blades can cut over 100nos nails.

### Spec.:

SIZE	Teeth Type	Connector
10X40	Normal, Japan , Bi-metal	Standard type, quick-release type
20x40		
32x40		
34x40		
45x40		
65x40		







Johnson Tools Manufactory Co.,Ltd

Factory Address:

Tuqiao Industrial Park, Jiangning District, Nanjing, Jiangsu,  
China

Fax: +86-25-84150172

All our products are exported via our own imp.&exp. Company.

**Suzhou Johnson Import and Export Co.,Ltd**

Sales Dept. address: No.11009, Building 8, K-Land Manhattan  
Square, No.5 Weihua Road, SIP, Suzhou, Jiangsu, China 215000

[www.johnsontoolscn.com](http://www.johnsontoolscn.com)

E-mail: [sales@johnsontoolscn.com](mailto:sales@johnsontoolscn.com)

WhatsApp: 18936085316