

STARTRC 发光脚架专用于Mini 3 Pro 说明书

产品简介

该产品为带有LED灯的增高脚架, 专为Mini 3 Pro无人机设计。同时脚架也有增高的作用, 让飞机在不平整的地方也能安全降落。脚架灯内置电池, 可以进行充电循环使用。模式有3种: 快闪、慢闪、常亮。

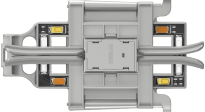


产品特点

- 1.卡扣式设计, 安装简单
- 2.可折叠收纳, 方便携带
- 3.夜间可以安全飞行, 保证飞机安全降落
- 4.内置电池可循环充电使用, 充电方便

产品参数

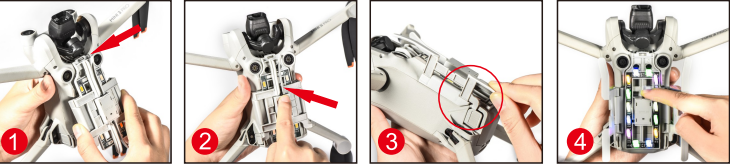
产品型号: ST-1111016	产品颜色: 灰色
产品重量: 20G	产品材质: ABS
包装重量: 50G	包装尺寸: 103×59.5×27mm
电芯类型: 锂离子电芯	充电时间: 40分钟
工作温度: -10℃ ~ 60℃	使用时间: 50分钟
储存温度: -10℃ ~ 45℃	电池容量: 60mAh
充电时是红灯, 充满红灯熄灭	
产品尺寸: 展开:102×92×28mm 折叠:102×59×20mm	

产品清单

- 折叠脚架*1
- 数据线*1
- 说明书*1
- 
- 
- 

使用说明

1. 如图所示, 先把脚架前挂钩挂在机身前
2. 用手按压脚架中部, 将脚架中间卡扣卡入机身中间凹槽
3. 将两边脚架打开, 脚架上的左右两边的扣位分别扣入电池两边的凹槽
4. 用手轻按折叠脚架上LED灯的开关, LED灯会亮起
5. LED灯光模式: 轻触一次快闪, 第二次慢闪, 第三次常亮, 第四次关闭



拆卸脚架方法

1. 先将两侧脚架向内折叠
2. 机头朝前, 将手放在脚架中部, 往前推即可



免责声明

感谢您购买 STARTRC Mini 3 Pro发光脚架, 在使用该产品之前, 请仔细阅读本声明, 一旦使用, 即被视为对本声明全部内容的认可和接受。请严格按本说明书使用该产品, 并务必重视注意事项.因用户不当使用造成的任何损失, 我司将不承担任何责任。

STARTRC Mini 3 Pro LED Landing gear Manual

Introduction

The LED extended landing gear was designed for Mini 3 Pro specially. The raised landing gear will reduce impact, and allow the drone to take off or land on on rough ground and protect the drone from damaging. The LED will create more flight fun and different flight experience during night flight. There is a rechargeable built-in battery in the landing gear kit, which is convenient to charge and reuse. The LED lights have 3 modes: quick flashing, slow blinking and steady on.

Key features

1. Buckle design, easy to install
2. Foldable design for easy storing
3. Make night flight safer
4. Built-in battery is rechargeable

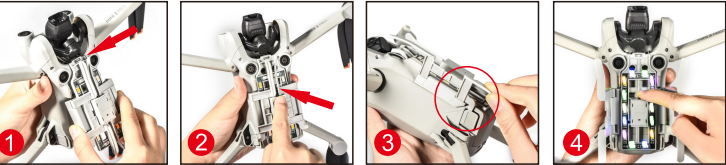
Specifications

Model No.: ST-1111016	Color: Gray
Net weight: 20G	Material: ABS
G.W.: 50G	Packaging size: 103×59.5×27mm
Cell type: Lithium ion cell	Charging Time: 40 minutes
Operating Temperature: -10℃~60℃	Battery life: 50 minutes
Storage Temperature: -10℃~45℃	Capacity of Battery: 60mAh
The indicator is red when charging, and it will be off when fully charged	
Size: Before folded:102×92×28mm After folded:102×59×20mm	



Installation

1. Unfold the drones arms, and turn over the drone. Put the front hook of the LED landing gear on the front of the drone bottom as the below figure shown
2. Press the center of the LED landing gear to snap the middle buckle into the middle groove of the drone body
3. Unfold the both sides of the LED landing gear, and then the small buckles will clip into the gap on the left and right buttons of battery
4. Turn on the switch of the LED landing gear, and then the LED lights will be on, and ready to use
5. LED modes: press the switch one time, the LED will flash quickly; Press the switch twice, and the LED will blink slowly; Press the switch three times, and the LED will be steady on; press the switch four times, and the LED will be off



Remove the landing gear

1. Fold the both sides of the landing gear inward
2. As the figure shown, place the drone head facing forward, and press down the center of the outside of the landing gear and push forward
3. Remove the landing gear



Disclaimer

Thank you for purchasing STARTRC Mini 3 Pro LED extended landing gear. Before using the product, please read this disclaimer carefully. Once you use the product, it will be deemed as the acceptance and acceptance of the whole content of this statement. Please strictly use the product according to this instruction, and pay attention to the cautions. The company will not assume any responsibility for any loss caused by improper use.