

105.00 mm

148.00 mm

## STARTRC LED闪圈桨叶说明书

### 产品简介

该产品为LED闪圈桨叶，专为Mini 4 Pro和Mini 3系列 无人机夜间飞行设计。有3种灯光模式，一键随意切换，让无人机在夜间飞行时桨叶上会出现3个紫色的光圈，增加多旋翼夜间飞行乐趣，配合长曝光摄影方法，可以获得精美的视觉图片。

### 产品特点

1. PC高透明材质，耐用且充满科技感；
2. 可充电循环使用；
3. 夜间配合长曝光摄影方法，可以获得精美的视觉图片；
4. 全新气动设计，出色降噪表现；

### 产品参数

产品型号：ST-1129878	产品颜色：透明
产品重量：64.5g	产品尺寸：153×24.5×16.5mm
包装重量：158.6g	包装尺寸：231×130.8×37mm
产品材质：PC	电池容量：30mAh
工作温度：-10℃～60℃	储存温度：-10℃～45℃

### 使用说明

1. 轻触按键开机；
2. 按键按一次切换一种模式，共有3种:快闪、慢闪、常亮3个模式，切换到最后一种模式，再按一次是关机；
3. 灯光颜色为橙色+蓝色，桨叶旋转后呈现紫色；
4. 充电亮红灯，充满则灯灭

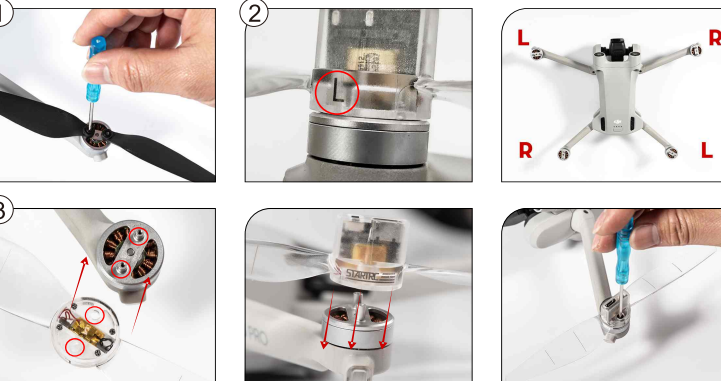
### 包装清单

1. 闪圈桨叶R\*2
2. 闪圈桨叶L\*2
3. 螺丝刀\*1
4. 充电线\*1
5. 说明书\*1



### 安装说明

1. 拆掉原厂桨叶；
2. 桨叶安装位置如图示:左前和右后装L桨叶，右前和左后装R桨叶；
3. 将闪圈桨叶放到对应位置的电机上，将螺丝装入并拧紧桨叶（用原厂螺丝）；
4. 安装完成。



### 注意事项

1. 安装闪字桨后，解锁电机时如有一支或多支桨叶不转为正常现象，须再次解锁，直至4支桨叶同时转动。
2. 当电机解锁桨叶不转时，遥控器上可能出现提示电机卡顿或异常，可忽略，桨叶完全正常启动时异常提示会消失；

3. 不推荐和原厂桨叶混搭使用；
4. 产品内部采用锂离子电池，初次使用或长期储存后，应先充满电再使用；
5. 桨叶不可折叠；

### 免责声明

感谢您购买 STARTRC Mini 4 Pro和Mini 3系列 LED闪圈桨叶。在使用该产品之前，请仔细阅读本声明，一旦使用，即被视为对本声明全部内容的认可和接受。请严格按本说明书使用该产品,并务必重视注意事项。因用户不当使用而造成的任何损失，我司将不承担任何责任。



## STARTRC LED Flash Propellers Manual

### Introduction

The LED flash propeller was designed for Mini 4 Pro / Mini 3 Series specially. There is 3 light modes, freely switch by one key. 3 purple halos will appear on the led flash propeller when drone flight in night, use with long exposure photography skill can take great-looking visual photos, also bring more funny to night flight.

### Key features

1. Transparent PC material, durable and good light transmittance;
2. Rechargeable and reusable;
3. Use with long exposure photography skill can take exquisite photos;
4. New aerodynamic design, excellent noise reduction effect.

### Specifications

Model No.: 1129878	Color: Transparent
Net weight: 64.5g	Product size: 153×24.5×16.5mm
Gross weight: 158.6g	Package size: 231×130.8×37mm
Main material: PC	Capacity of battery: 30mAh
Operating temperature: -10℃～60℃	Storage temperature: -10℃~45℃

### Instructions

1. Press switch and starting up;
2. There is 3 light modes: fast flashing mode, slow flashing mode and light keep on mode. press once switch to change one mode until the last mode, press then power off.

3. LED colors are orange and color, purple color is appear on propeller during of working.
4. When the device is charging ,the indicator will be on and red, and the indicator will be off when full charged.

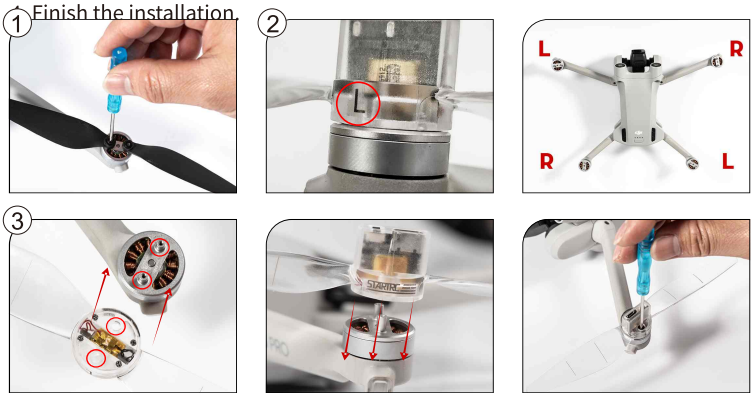
### In the box

1. LED Flash Propeller with marks "R" \* 2
2. LED Flash Propeller with marks "L" \* 2
3. Screwdriver \* 1
4. Charging Cable \* 1
5. Manual \* 1



### Installation

1. remove the original propellers
2. Propellers mounting position as shown in the figure:  
attach the propeller with mark "L" to the front left motor and rear right motor,  
attach the propeller with mark "R" to the front right motor and rear left motor.
3. Match the propellers and motors by step 1, use original screws to mount the propellers, make sure the screws is tightening.



### Cautions

1. Please stopping the motors and re-starting the motors again if 1 or more led flash propellers is not rotate when starting the motors until all propellers is rotating normally.
2. There is maybe a warning prompt (motor is stuck or abnormal ) appears on the remote controller when the led flash propellers is not rotate, Please do not worry , the abnormal prompt will be disappear when the led flash propeller is rotating normally.
3. Only use the led flash propeller, DO NOT mix propeller types (original propeller not mix)
4. The product has built-in Lipo battery, after first used or long time storage, please charging enough before use again.
5. The LED flash propeller can not be folded.

### Disclaimer

Thanks for purchasing STARTRC for Mini 4 Pro / Mini 3 Series LED flash propellers. Please read this statement carefully before using the product. Once using the product, it will be regarded as the approval and acceptance of all contents of this statement. Please use the product in strict accordance with this manual and pay attention to the precautions. We will not assume any responsibility for any loss caused by improper use.

