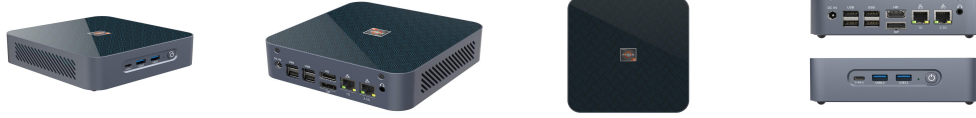


Shenzhen Zkmgic Technology Co., Ltd

Product Model NO(ZKS500+)

Product Pictures



Product Appearance

Type	Details	Standard Configuration
Product Form	Type	MINI-PC
	Dimension	150*145*40mm
	Shell Material	Aluminum Alloy+ABS

System hardware configuration

Type	Details	Descriptions		
CPU	Type	AMD Ryzen 9 5900HX	AMD Ryzen 7 5800U	AMD Ryzen 3 5400U
	Speed	CPU 8 core 16 threads, 3.3 GHz, Turbo Speed Up to 4.6 GHz	CPU 8 core 16 threads, 1.9 GHz, Turbo Speed Up to 4.4 GHz	CPU 4 core 8 threads, 2.6 GHz, Turbo Speed Up to 4.0 GHz
GPU	Type	AMD Radeon™ Graphics	AMD Radeon™ Graphics	AMD Radeon™ Graphics
	Speed	2100 MHz	2000 MHz	1600 MHz
Memory	Type	2 x SODIMM-DDR4 Slot		
	Capacity	SODIMM 8GB/16G/32G, DDR4 UP TO 3200MHz, LPDDR4 UP TO 4266MHZ		
Storage	SSD	2 x M.2 2280 SATA/PCIe/NVMe SSD, up to 2TB		
	HDD	1 x SATA3.0 slot for SATA HDD or SSD		
Audio	Type	Azalia Codec support 2.1 channel output, High Definition Audio Controller		

Interent Connections

Type	Details	Descriptions
WIFI	Module	1 x M.2 NGFF 2230(Key E) slot for Wi-Fi module(2.4G/5G Wi-Fi B/G/N/AC orBluetooth5.0), support WiFi6 module
	Antenna	2 x inner RF cables
Ethernet Network	RJ45	1000Mb-RTL8111H + 2.5Gb-RTL 8125B 1000M-2500Mbps BaseT LAN

Extensive Ports

Type	Details	Descriptions
USB 3.0	USB3.0	USB3.0x2
USB 2.0	USB2.0	USB2.0x4
Type-C	USB2.0	1 x Type-C(Support DP/USB 3.2) (4K 60Hz)(PD3.0/120W/20V-5A)
HDMI	Audio/Video output	1 x Type-C(Support DP/USB 3.2) (4K 60Hz)(PD3.0/60W/20V-3A)
DP	Audio/Video output	HDMI 2.0 x 1
RJ45	1000Mbps Ethernet	DP x 1
LED	LED	RJ45 x 2
Switch	Power button	LED x 1
DC IN	Power supply	1 x Power On/Off Switch
		1 x 19V DC In

Software Configuration

Type	Details	Descriptions
BIOS	Support	TPM2.0, PXE, RTC, Wake on LAN, Auto power on
OS	OS version	Windows10 / Windows10 pro / Windows11 / Ubuntu / Linux

Power

Type	Details	Descriptions
Input		100~240V AC/50-60Hz
Output		19V/4.74A, 5.5/2.5mm
Environment	Operating temperature	-10/60 Centigrade
	Storage temperature	-20/+70 Centigrade
	Relative Humidity	0%~90% (non-condensing)

Accessories

Type	Details	Descriptions
Adaptor	wall-plugged type	output 12V/6A