



**CAMBODIA HOTEL EXTERNAL
ELECTRIC LOUVER SUNSHADE CURTAIN WALL**



▶ Project Introduction And Construction Overview



The uniquely designed golden electric louver sunshade capable of opening and closing at any time with motorized control, swiftly transformed into a local landmark project.

This project is located in the capital of Cambodia and aims to create a technologically advanced five-star hotel with accommodation, business meeting facilities, dining options, and more.

After the initial design phase, the client sought a company capable of fully implementing their vision, which led them to approach our team for a comprehensive solution. The project involves a 4000m² exterior facade adorned with golden blinds, providing the flexibility to open and close based on weather conditions.

Although the project presents certain challenges, PRANCE rich technical expertise and integrated production team have provided the client with a highly satisfactory purchasing experience.

Project Time: Year 2021

The Products We Provide: Custom Electric Louver Sunshade

Application Scope: Building facade

Services We Provide: Design, Refine design, production, technical support



Challenge

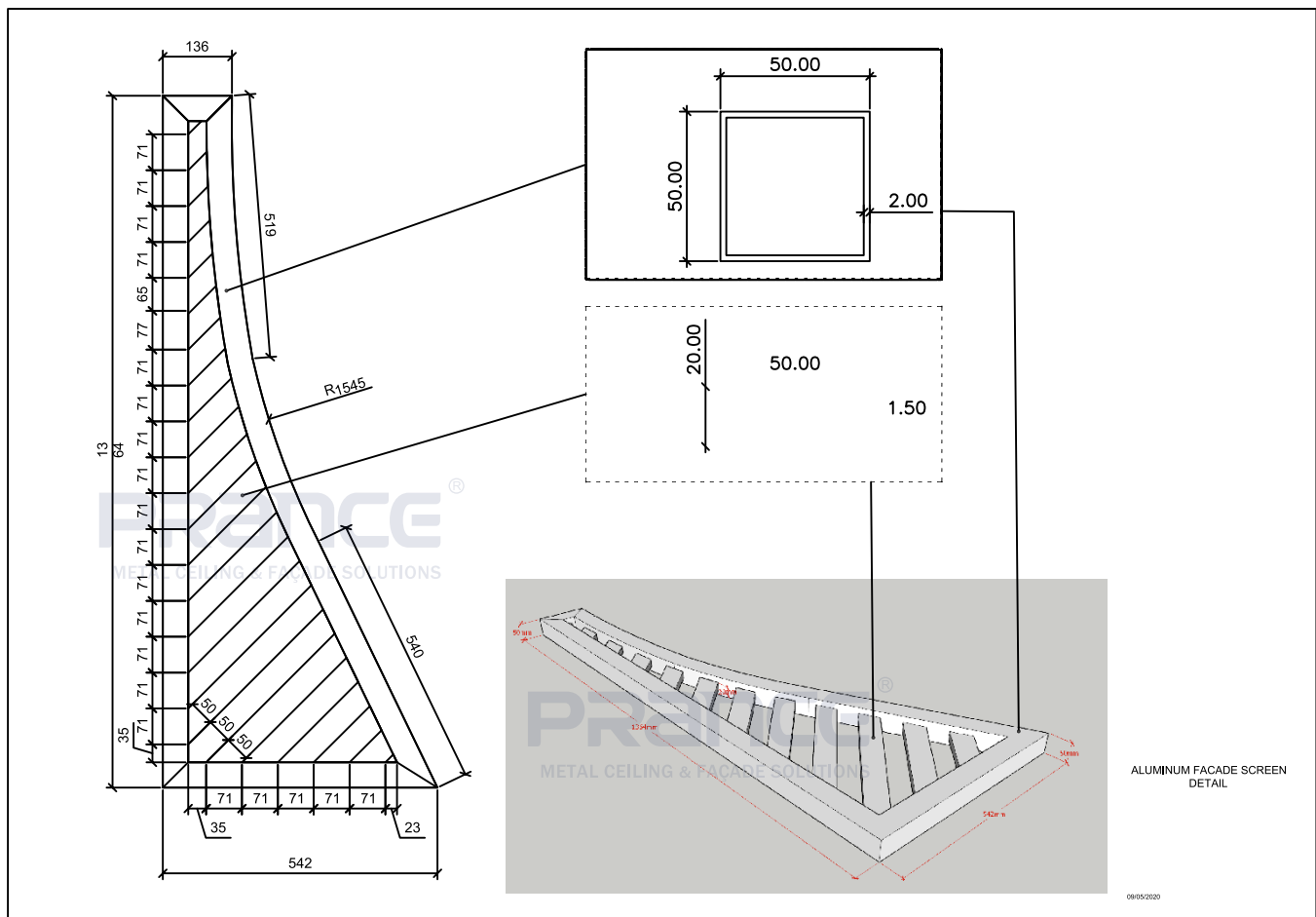
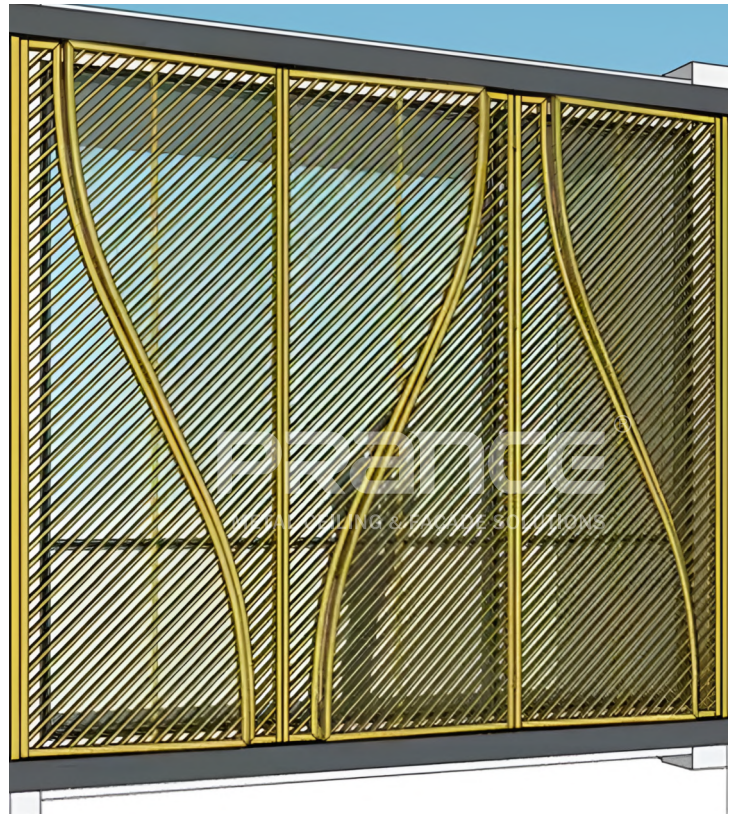
The Difficulty about this project is the electric control of this louver installed exterior. The irregular blinds experience uneven force during rotation. The travel distance is asymmetrical, with two panels on the left and four panels on the right being controlled by servo motors at different speeds. The aluminum material is seamlessly joined, without any visible welding points on the surface.

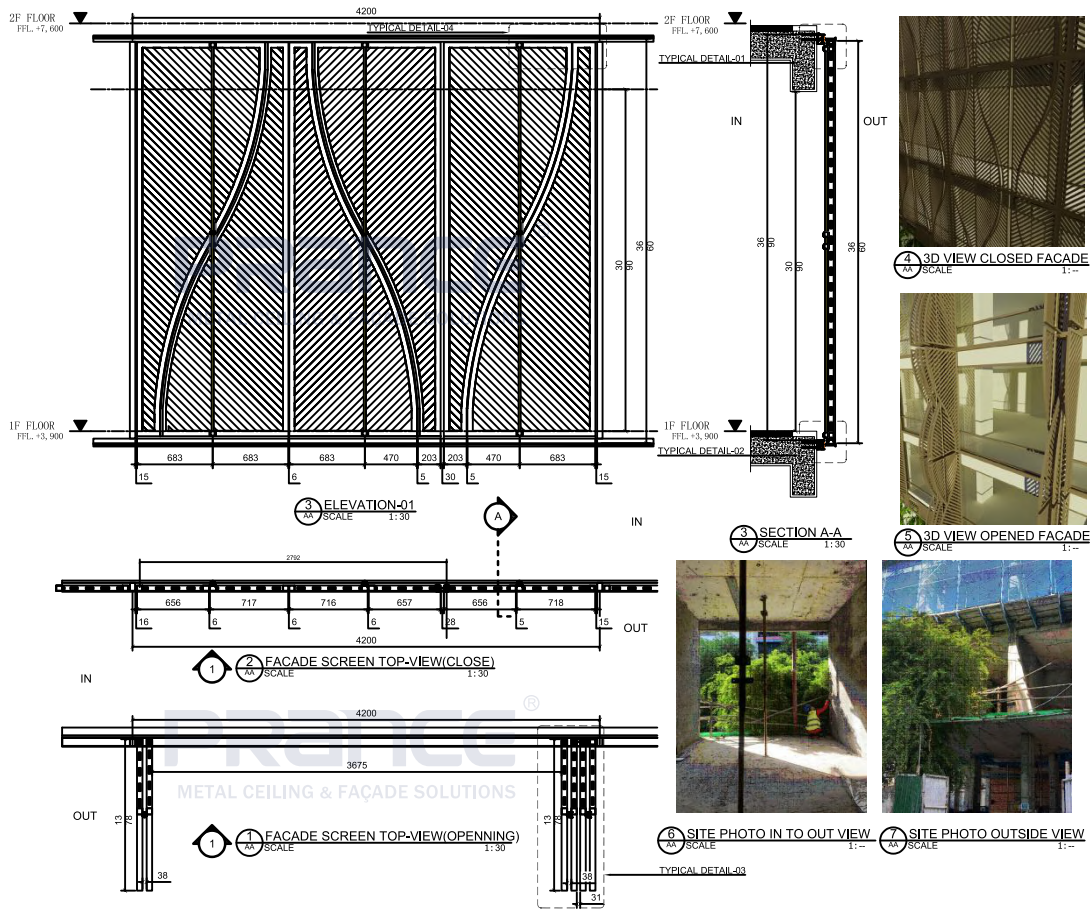
Solution

To address the first issue, safety was our top priority. Firstly, we installed a protective enclosure around the motor to ensure its waterproof capability. Additionally, we implemented waterproof protection at all electrical connections to prevent any issues during rainy weather.

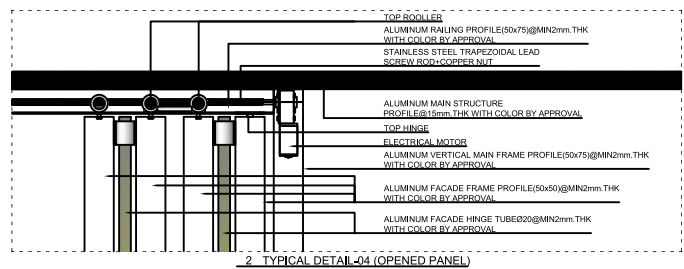
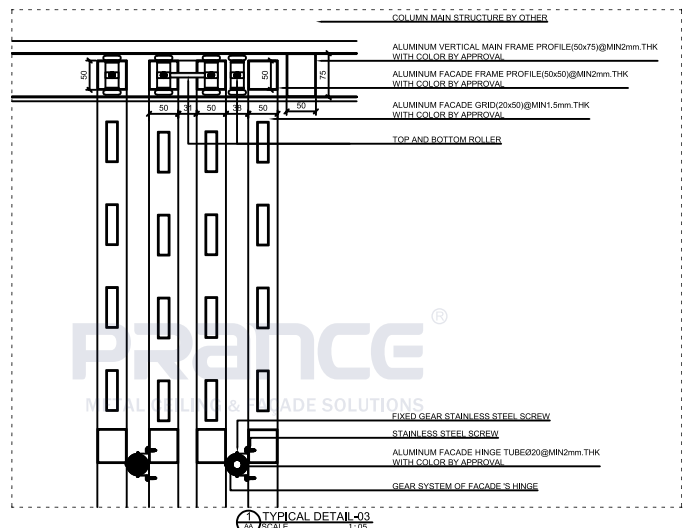
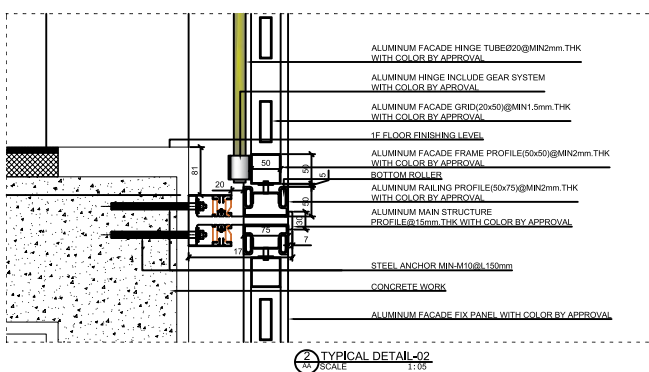
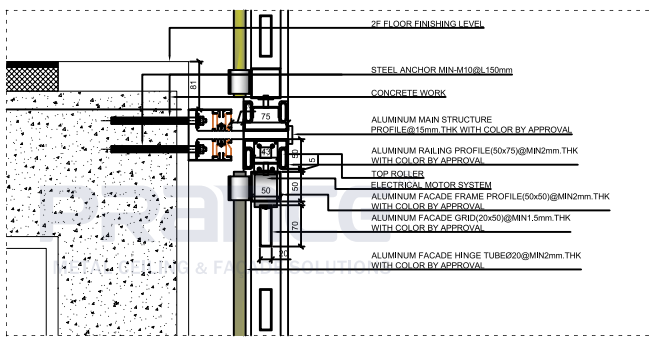
Secondly, we applied a fluorocarbon coating in a gold color to the blinds. This ensures that the color remains vibrant and maintains its quality for a warranty period of over 15 years, considering it is a landmark project. We aim to keep it stunning for an extended period.

Lastly, we have resolved the smooth operation concern, ensuring that the motorized blinds system can be opened and closed seamlessly at any time.



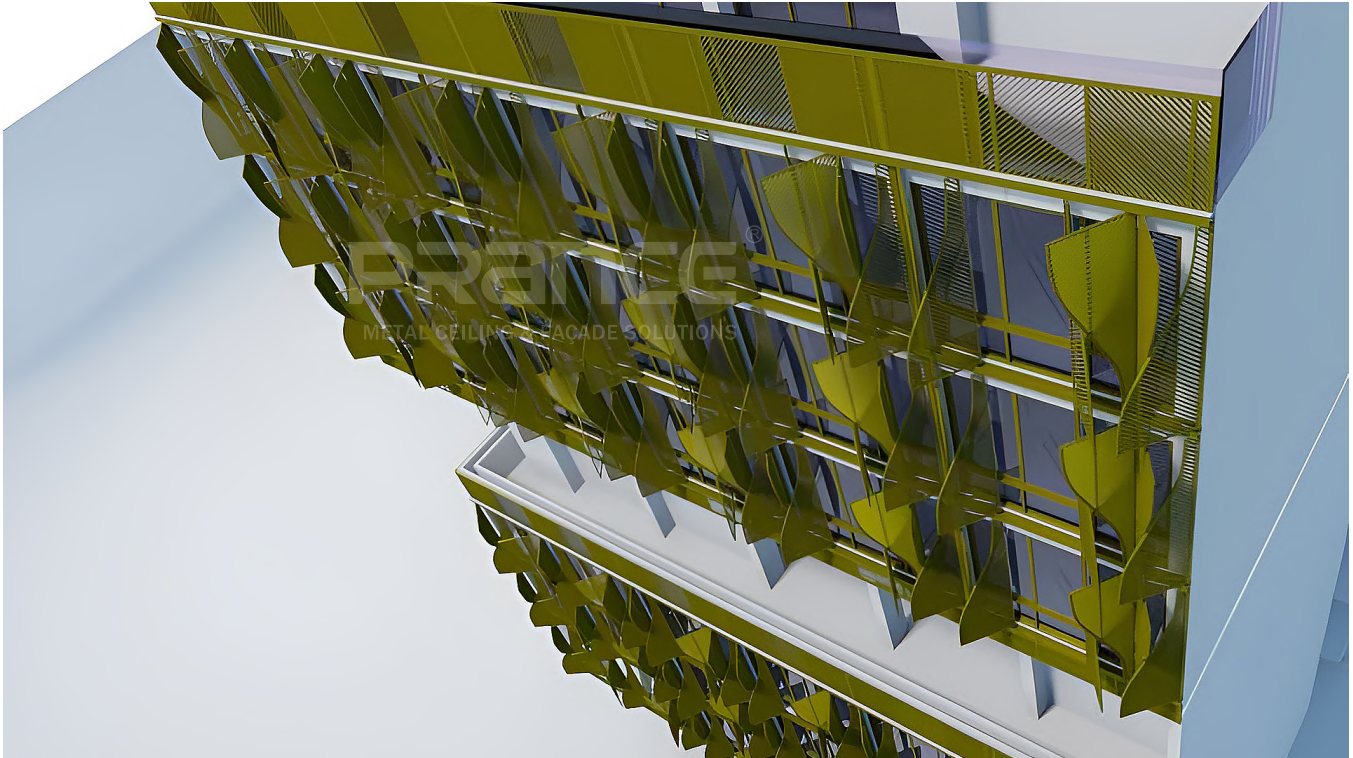


Production Technical Drawings



► Preliminary Concept

The inclusion of advanced technology and the use of gold color represent a sense of sophistication and elevate the project to a new landmark status.



► Production Process And Technical Services

We take extra care in all the joints and pay special attention to protecting the profiles themselves to ensure that the materials are not scratched. Additionally, it is crucial that for all such unique projects, we conduct multiple successful trial installations in our factory before shipping them to the site. We have engaged in several business communications with the local construction team regarding this project. We have also provided a comprehensive installation manual to the customer, ensuring that they can understand it clearly before we feel at ease.



▶ Finished Product Inspection

Final inspection is one of the crucial steps in our quality management process. We thoroughly examine every detail, including the surface finish and the functionality of the product. Of course, for this project, we use high-quality aluminum materials to ensure the product's inherent quality. Only after a thorough inspection and confirmation that everything is in order, do we proceed to pack the products securely.



Finalized





Finalized



PRANCE®

METAL CEILING & FAÇADE SOLUTIONS

PRANCE METALWORK BUILDING MATERIAL CO.,LTD

Facebook  / LinkedIn  : Prance Metalwork Building Material

Instagram  / YouTube  / Pinterest  : prance_metalwork

Http: [//www.prancebuilding.com](http://www.prancebuilding.com) Tel: +86-757-83138155

E-Mail: info@prancebuilding.com Fax: +86-757-83139722

Office: 3F,1st Building,No.11 Gangkou Rd,Chancheng,Foshan,Guangdong.

Factory: 169, South Area, Base of Electrical and Electronic Industry,Baini, Sanshui, Foshan, Guangdong.