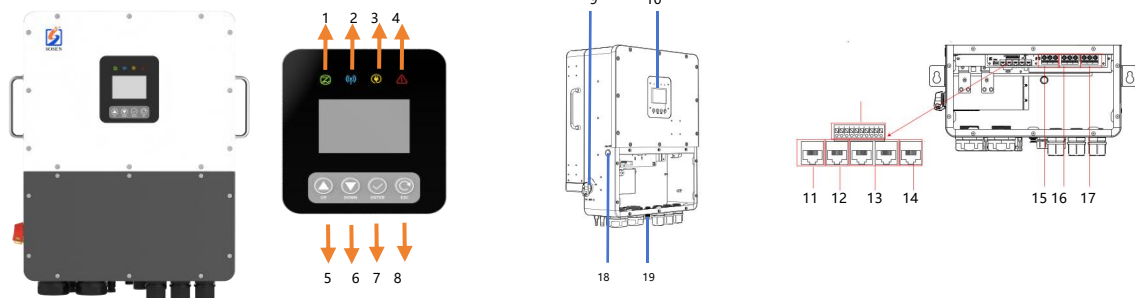


1. Overview



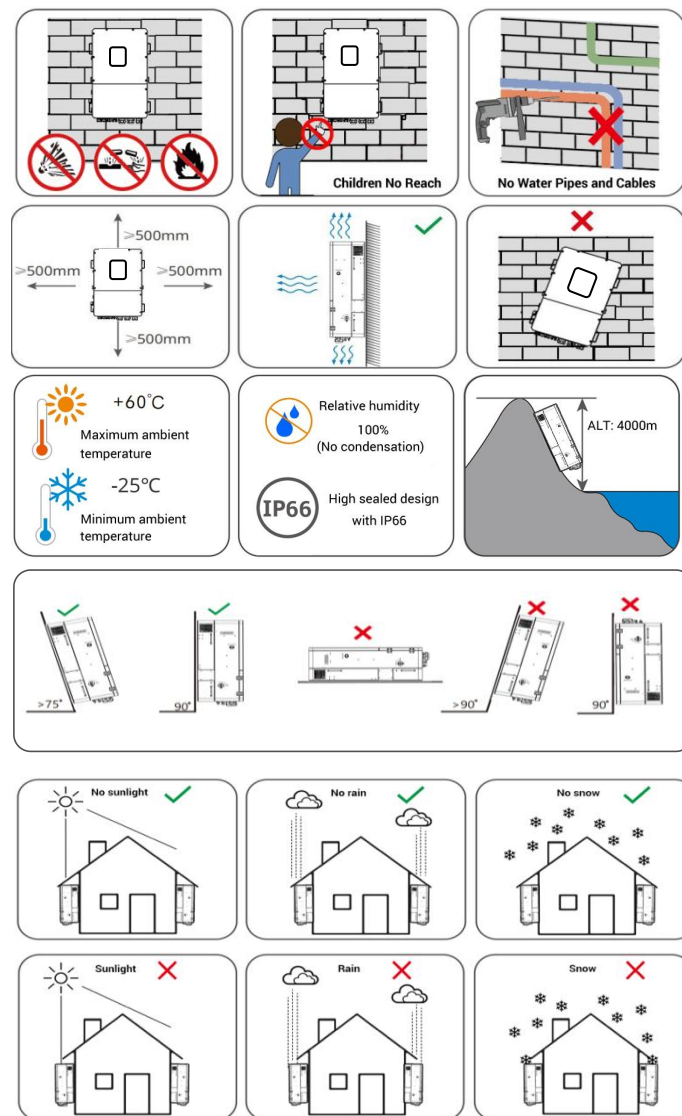
Name	NO.	Description	NO.	Description	NO.	Description
Indicator LED	1	Green : ON, The inverter is running ; Flash is Standby.	9	PV DC disconnect	17	EPS terminal
	2	Blue : ON, Communication with BMS normal.	10	LCD Screen	18	Power on/off switch
	3	Yellow : ON, The inverter is in EPS mode.	11	DRY/Debug	19	Wifi port
	4	Red : The inverter is in fault mode.	12	BMS: CAN/485	20	
	5	UP:To go to previous selection	13	Parallel port	21	
	6	DOWN:To go to next selection	14	DRM port	22	
	7	ENTER:To confirm the selection	15	Grid terminal	23	
	8	ESC:To exit setting mode	16	Generator terminal		

WARNING

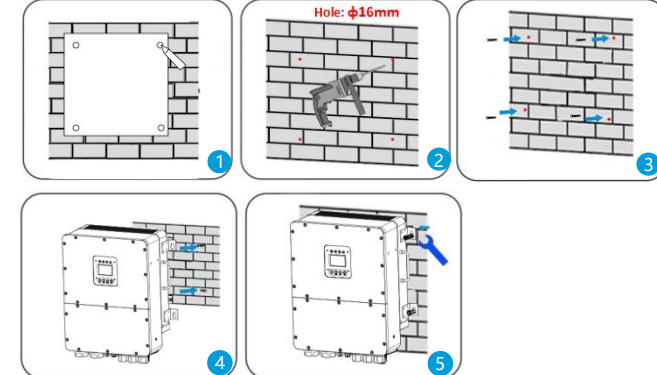
1.This file will be updated from time to time due to product upgrades or other reasons. Unless otherwise agreed, this document is intended as a guide only. All information and suggestions do not constitute an express or implied warranty. The final interpretation of the content is at company.
2. This document is for quick guidance installation only. For details, please refer to the User Manual.

2. Installation

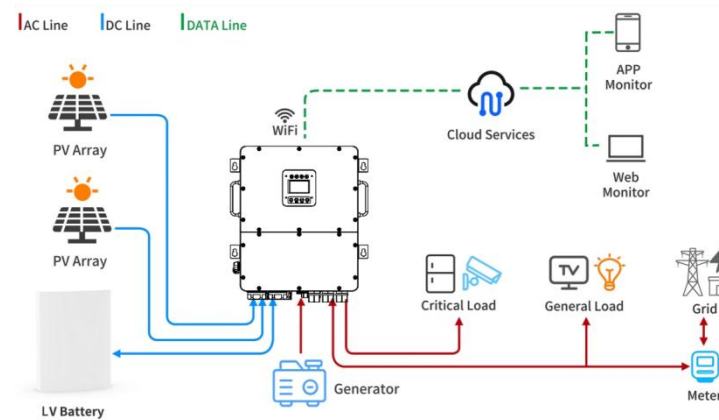
2.1 Installation Requirements



2.2 Installation Steps



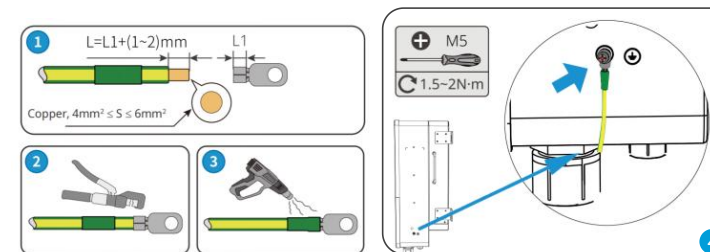
2.3 System View



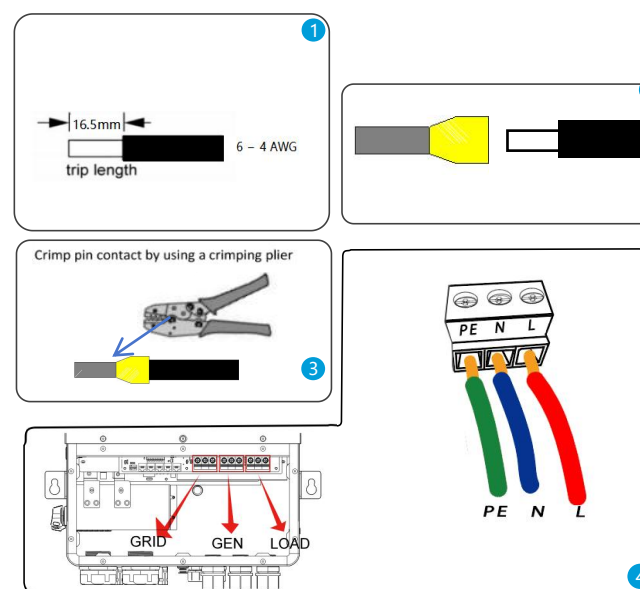
3. Connecting cables

NO.	Cable name	Type	Recommend module	WARNING
1	Grounding cable	Single multi-core yellow-green copper cable	Cable diameter ≥ 6AWG	1.Lithium battery has its own power line and communication line. so use them. 2.Hybrid inverter include the basic communication line. So use them directly. 3.Please make sure all the switches OFF before connection. For your safety. Please do not operation when power on.
2	AC output cable	Two or three different color multi-core copper cables	Cable diameter ≥ 6-4 AWG	
3	PV input cable	Photovoltaic dedicated cable (such as PV1-F)	12AWG-10AWG	
4	Battery cable	Red and back multi-core copper	Cable diameter ≥ 2/0 - 4/0 AWG	
5	Communication cable	CAT5E	/	

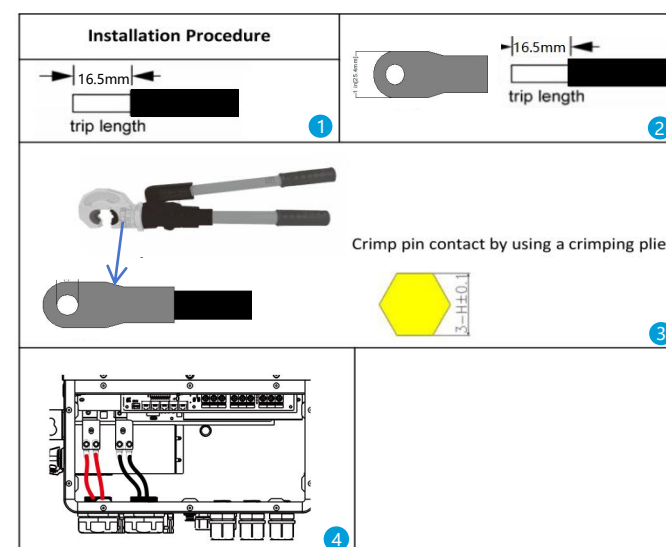
3.1 Grounding



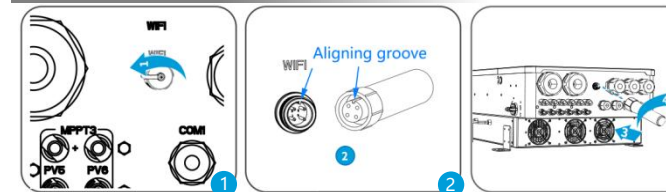
3.2 GRID, Load and GEN Wiring



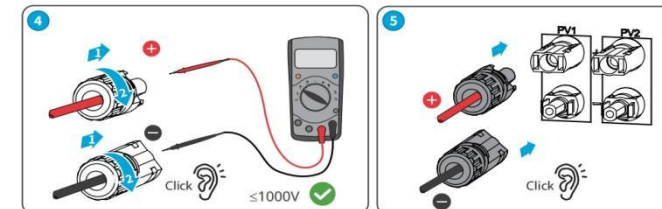
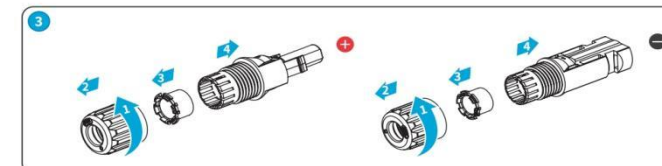
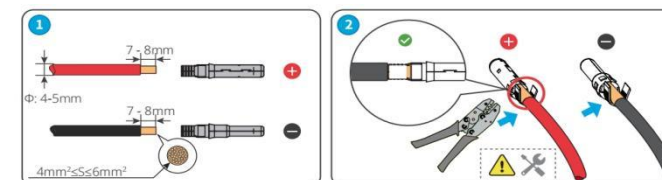
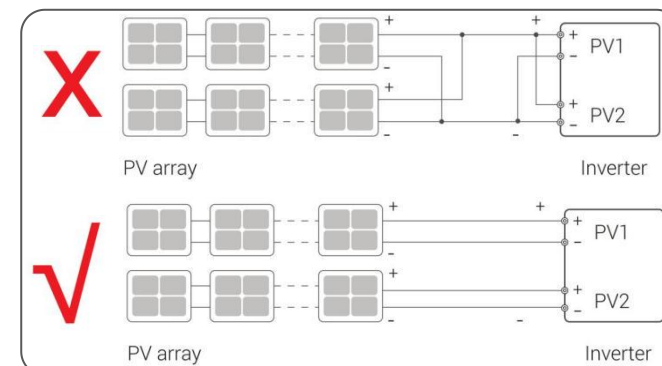
3.4. Battery Wiring



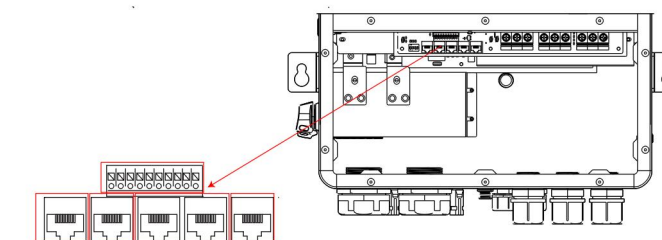
3.5 WiFi dongle Installation



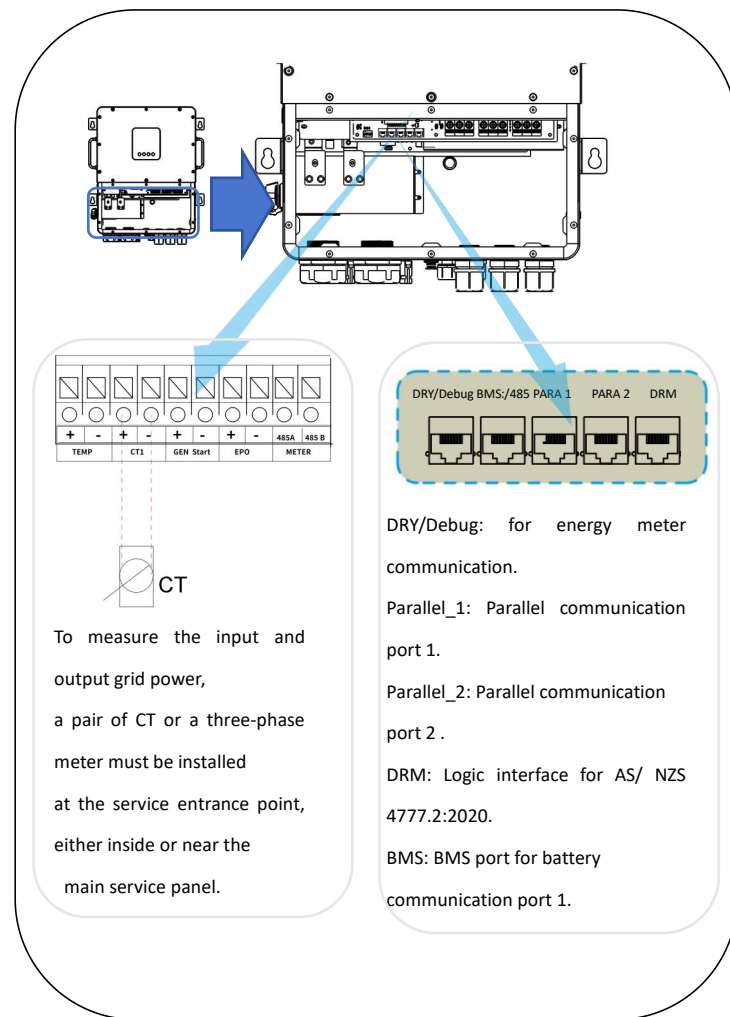
3.3 PV Wiring



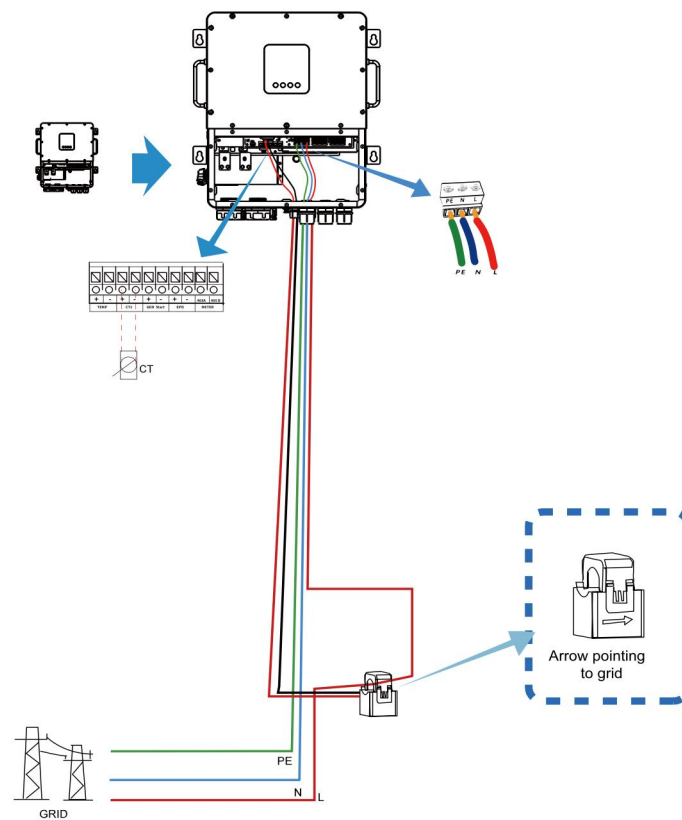
3.6. Communication



PIN	Meter	BMS RJ45	PARA1/2	DRM	RJ45terminal
1	Meter RS485A	Lead-acid cell NTC	Para Display CAN H	DRM1/5	
2	Meter RS485B	GND	Para Display CAN L	DRM2/6	
3	/	/	/	DRM3/7	
4	5V_VCC	BMS_CAN1_H	Para Power CAN1_H	DRM4/8	
5	FR_ALM_IN	BMS_CAN1_L	Para Power CAN1_L	REFGEN	
6	5V_GND	GND	/	COM/DRM0	
7	AFCI_485A	BMS_485A	Para Power CAN2_H	+12VS	
8	AFCI_485B	BMS_485B	Para Power CAN2_L	GND	



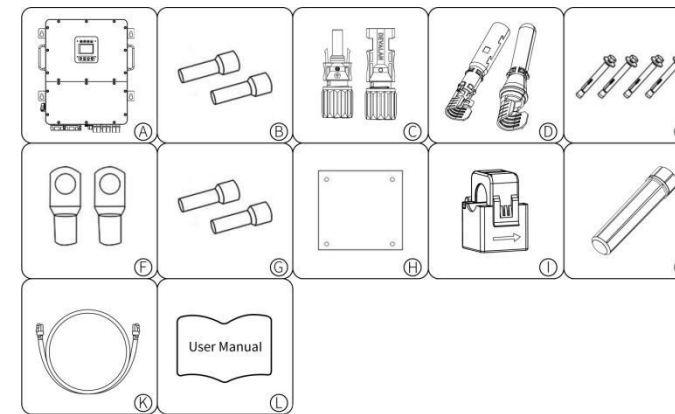
Please look at the figure horizontally



3.7 App Installation and Web Monitor

Item	Web View	APP	SOSEN Energy Web&APP manual
QR Code			
Website	https://sosen.inteless.com/	iOS: search "SOSEN Energy" in Apple Store Android: search "SOSEN Energy" in Google Play	https://www.soseninverter.com/product-manual.html

4.What is in the box?



Item	QTY	Description	Item	QTY	Description
A	1	Inverter	B	10	Tubular Terminal (0.5 mm ²)
C	12	PV connectors (Black) (6*positive, 6*negative)	D	12	PV pin contacts (Black) (6*positive, 6*negative)
E	4	Parallel steel anti-collision bolt M12x60	F	4	Copper Terminal(50mm ²)
G	10	Tubular Terminal(16mm ²)	H	1	Positioning Board
I	1	CT (1000/1)	J	1	Wi-Fi module
K	1	Parallel communication cable	L	1	User manual

3.8 WiFi Indication

LED	State	Indication
	Red LED: Inverter communication indication	
	Green LED: Network communication indication	
	Cycle for 2S: flash once quickly, then glowing	Cycle for 2S: flash once quickly, then glowing
	Not glow more than 20S	The power supply to the Wi-Fi&BLE stick is abnormal or damaged: 1. Check whether the power supply of the Aerial Plug Interface on the inverter is normal 2. Wi-Fi&BLE stick abnormal, contact the dealer
	Cycle for 2S: flash once quickly, then off	Communication failure: Check whether the connection between the Wi-Fi&BLE stick and inverter is loose or poor contact
	When powered on, continuously glows 3S, and then off	Power on indication
	Glow more than 5S	Communication is normal
	During the long glowing, flash occasionally	Network transmit data
	Cycle for 20S: flash once quickly, then off	The route is not connected: 1. Check whether the password is right 2. Check the strength of the router
	Cycle for 20S: flash 3 times continuously, then off	Connect to the route, but can't connect to the cloud server: 1. Check whether the router has Internet access permission 2. Check the firewall setting
	Cycle for 20S: flash 4 times continuously, then off	Wi-Fi&BLE stick information error: Please contact the dealer

5.Post-installation check

step	Acceptance Criteria	step	Acceptance Criteria
1	Hybrid inverter is installed correctly and firmly	2	All switches off
3	WiFi&BLE stick Installation is installed correctly and firmly.	4	The ground wire confirms the connection and is reliable.
5	Cable wiring is reasonable, meets the requirements, no broken skin, etc.	6	All wires are correct and securely connected.
7	Cable tie port trimming, no sharp corners, etc.	8	All exposed terminals are well protected, no vacant ports.
9	Pay attention to packing all the residual materials.		

6.ON/OFF Hybrid Inverter

NOTICE

Before power on, please make sure all of the voltage and current are in the range of specification of hybrid inverter. Otherwise it will be damage to hybrid inverter.

Follow are the steps of turn on actions:

1. Press the Power on/off button to turn on the device, and keep the button pressed.
2. Turn on PV switch.
3. Turn on the switch between Grid and hybrid inverter.
4. Turn on the switch between battery and hybrid inverter and wake up battery.
5. If need to setup hybrid inverter. Please turn to user manual of hybrid inverter for detail description.
6. The shutdown steps are opposite to the above order.