

TALLSEN

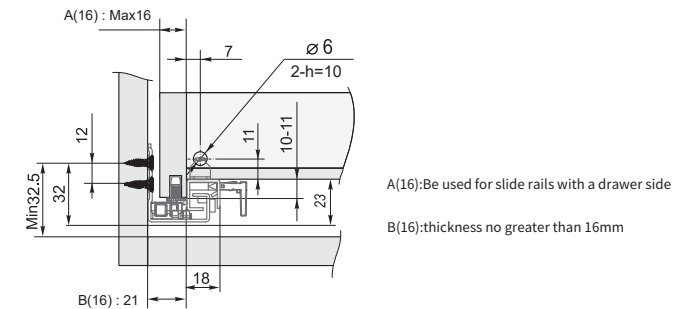
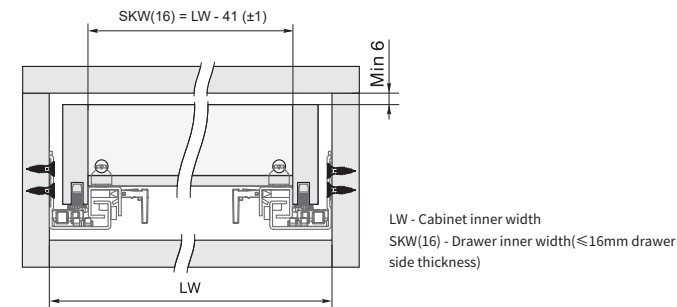


U

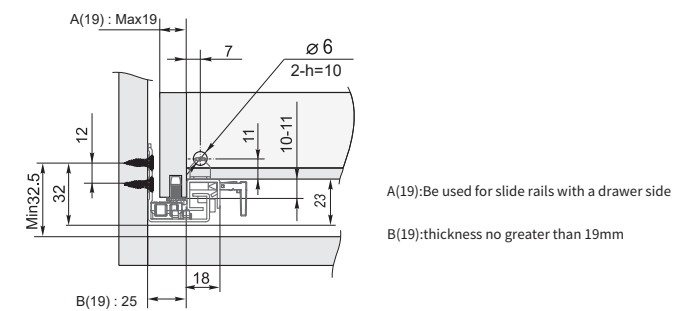
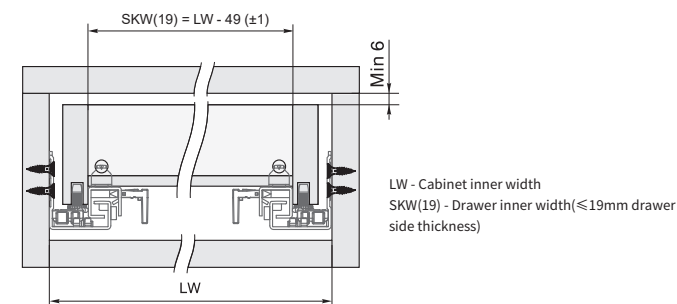
UNDERMOUNT
SLIDES

Mounting data

Half-extension undermount drawer slide 16MM

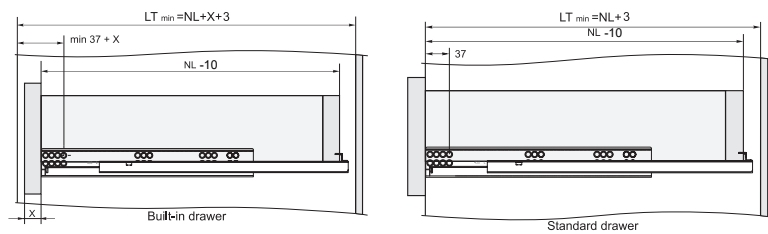
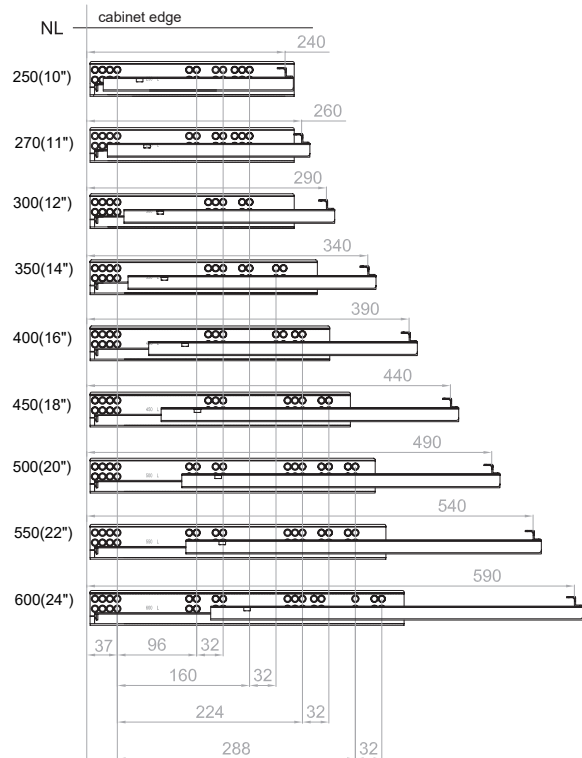


Half-extension undermount drawer slide 19MM

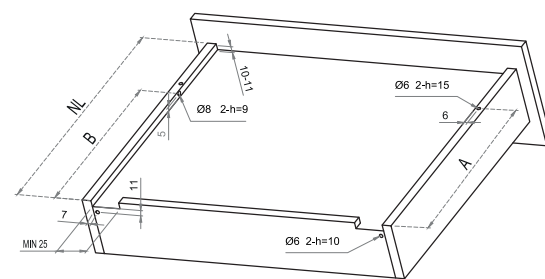


Half extension soft closing undermount slide (with bolt locking) (SL4250)

Installation dimensions

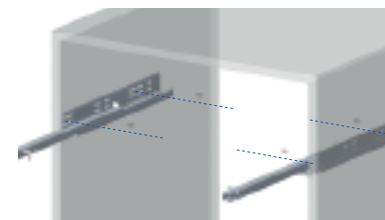


LT - Cabinet inner depth
NL - Nominal slide length



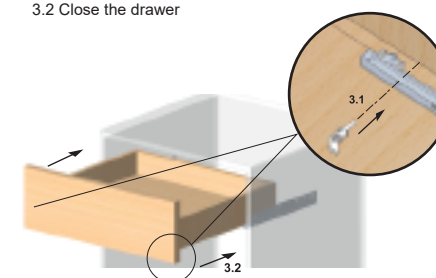
NL	240	260	290	340	390	440	490	540	590
A	220	230	245	270	305	330	355	390	415
B	188	198	213	238	273	298	323	358	383

1. Install the slides on the cabinet



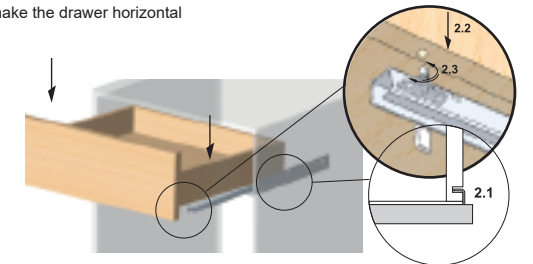
3. Fixing the drawer and slides

- 3.1 insert the left/right plastic bolts into the pre-drilled holes on the drawer side walls
- 3.2 Close the drawer



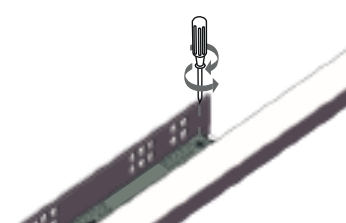
2. Set the drawer on the slides

- 2.1 Insert the slide hook into the drawer back holes
- 2.2 Insert the slide adjustable screw into the drawer side wall
- 2.3 Adjust the left/right screw to make the drawer horizontal



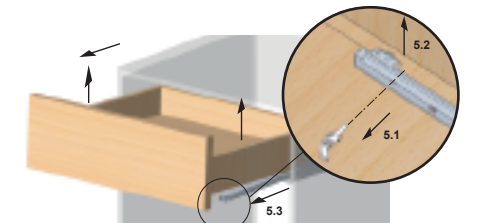
4. Adjustable opening and closing mechanism:

When the drawer takes more than 20kg, adjust the eccentric screw on the damper, max 25% more strength will be applied, so that make the movement smooth.



5. disassembly of the drawer

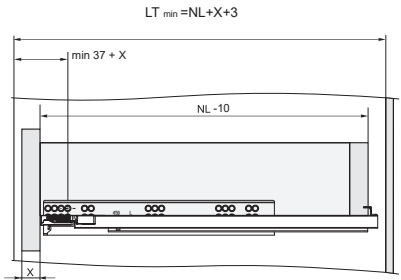
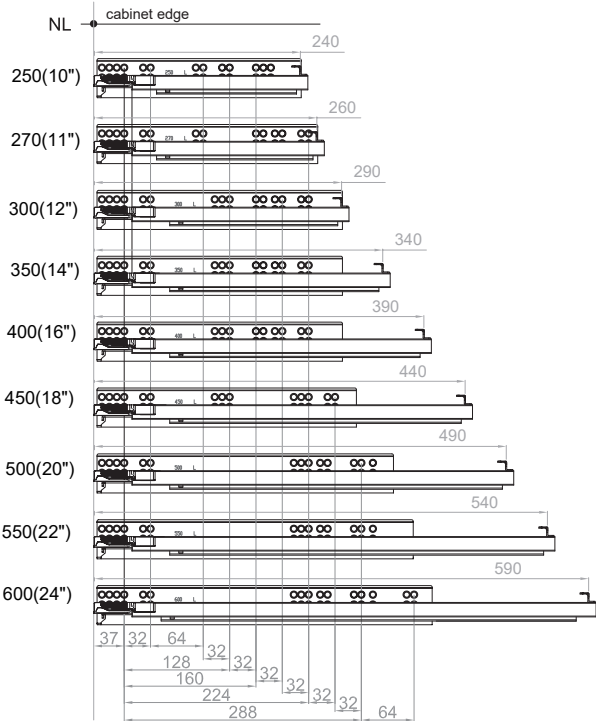
- 5.1 take out the plastic bolt to separate the drawer from the slides
- 5.2 take up the drawer
- 5.3 Draw out the drawer



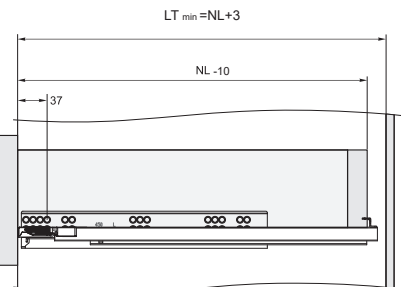
Mounting data

Full extension soft closing undermount slide(with switch)
(SL4336/SL4328/SL4720/SL4730)

Installation dimensions



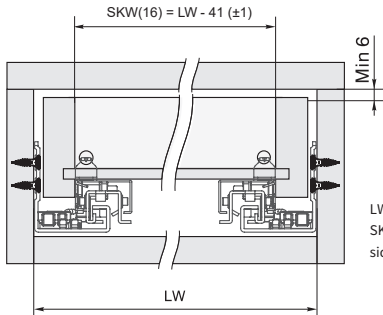
Built-in drawer



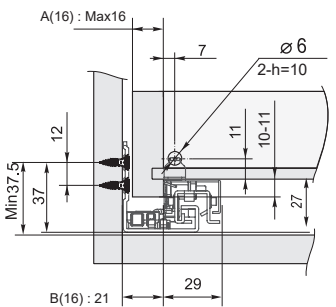
Standard drawer

LT - Cabinet inner depth
NL - Nominal slide length

Full-extension undermount drawer slide 16MM

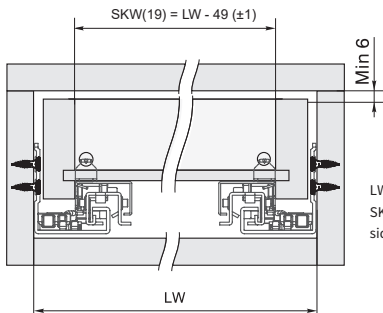


LW - Cabinet inner width
SKW(16) - Drawer inner width(≤16mm drawer side thickness)

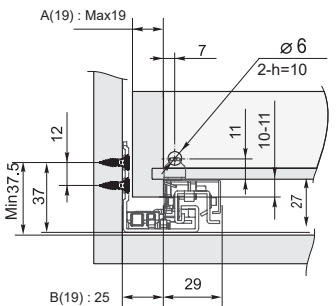


A(16):Be used for slide rails with a drawer side
B(16):thickness no greater than 16mm

Full-extension undermount drawer slide 19MM



LW - Cabinet inner width
SKW(19) - Drawer inner width(≤19mm drawer side thickness)



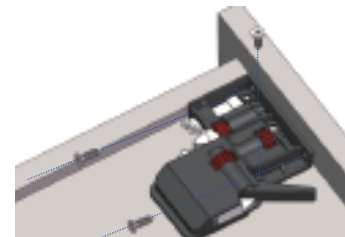
A(19):Be used for slide rails with a drawer side
B(19):thickness no greater than 19mm

Mounting data

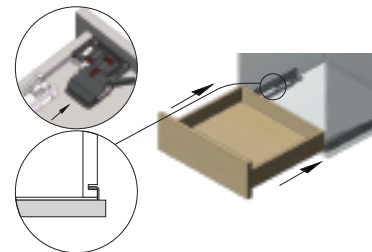
1. Install the slides on the cabinet



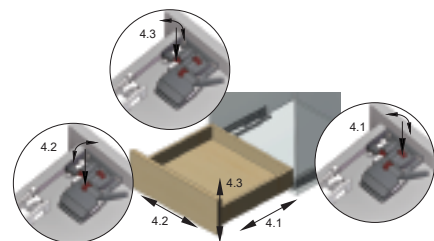
2. Install left/ right handle in the front of the drawer



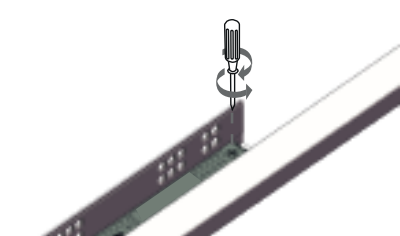
3. Install the drawer on the slides, slide hooks insert into the pre-drilled holes on the drawer back panel



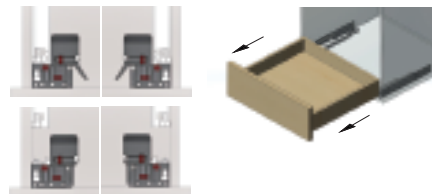
4. Adjust the front panel with plastic wheel on the handle
4.1 Front and back adjustment ±2mm.
4.2 Left and right adjustment ±2mm.
4.3 Up and down adjustment +3mm.



5. Adjustable opening and closing mechanism:
When the drawer takes more than 20kg, adjust the eccentric screw on the damper, max 25% more strength will be applied, so that make the movement smooth.

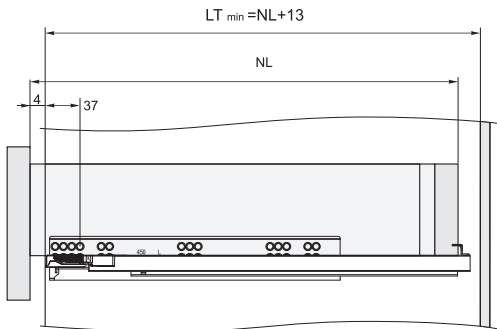
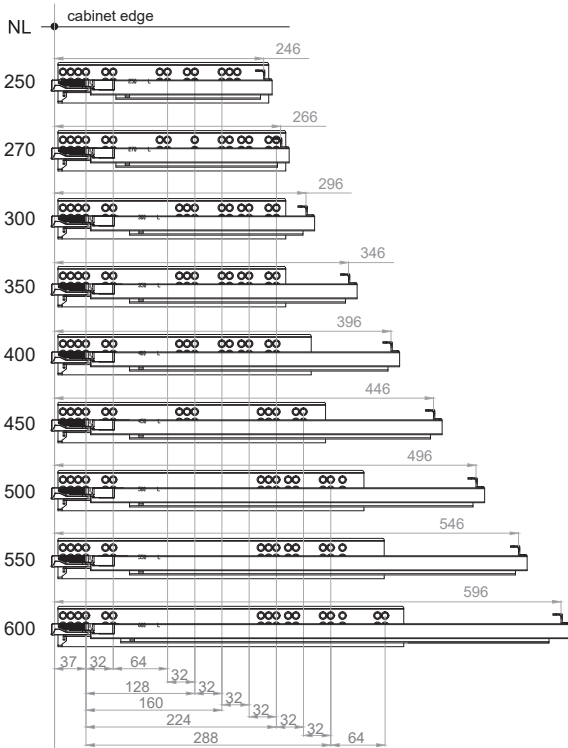


6. Push the handle lever to unlock the drawer, then pull out the drawer



Full extension push open undermount slide (with switch)
(SL4341/SL4342/SL4820/SL4830)

Installation dimensions

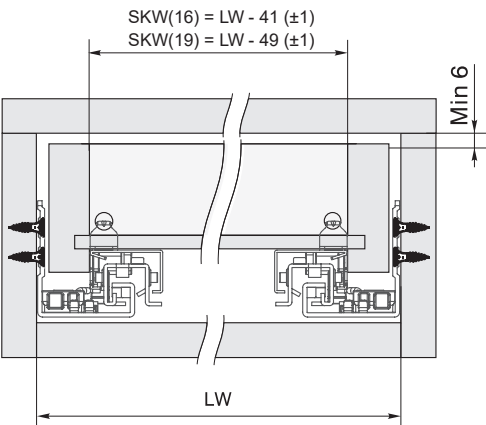


Standard drawer

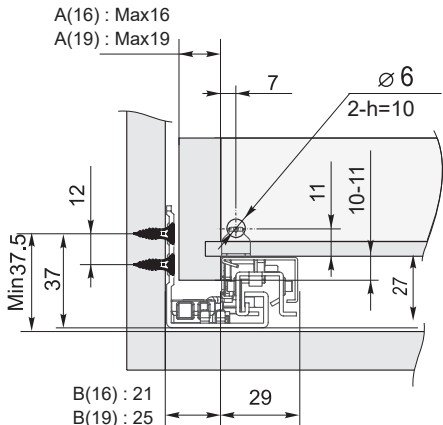
LT - Cabinet inner depth
NL - Nominal slide length

Mounting data

3-Fold push-open concealed drawer slide(with handle)

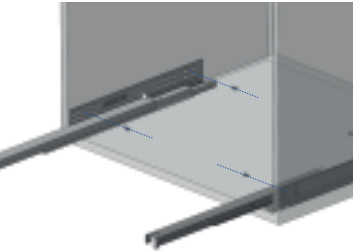


LW - Cabinet inner width
SKW(16) - Drawer inner width(≤16mm drawer side thickness)
SKW(19) - Drawer inner width(≤19mm drawerside thickness)

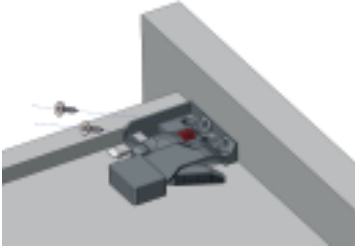


A(16):Be used for slide rails with a drawer side
B(16):thickness no greater than 16mm
A(19):Be used for slide rails with a drawer side
B(19):thickness no greater than 19mm

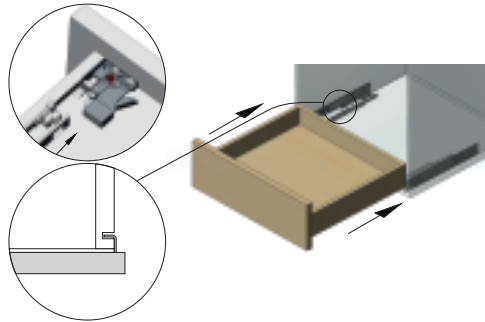
1. Install the slides on the cabinet



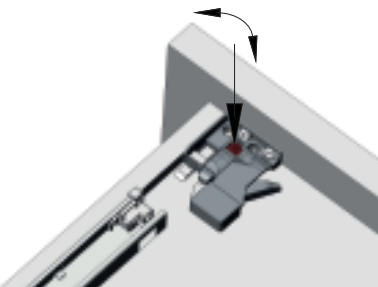
2. Install left/ right handle in the front of the drawer



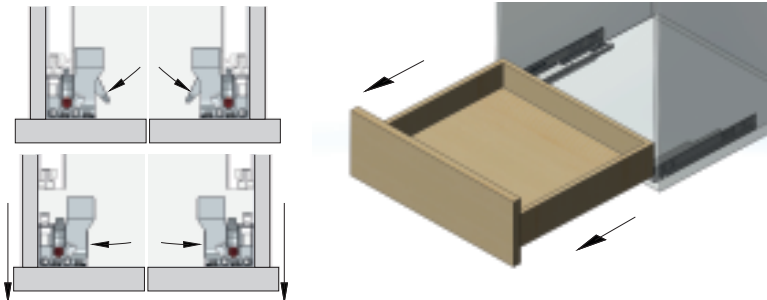
3. Install the drawer on the slides, slide hooks insert into the pre-drilled holes on the drawer back panel



4. Adjust the front panel with plastic wheel on the handle, 0-2.5mm



5. Push the handle lever to unlock the drawer, then pull out the drawer



HALF EXTENSION UNDERMOUNT DRAWER SLIDES



- ▶ Main material: Galvanized steel
- ▶ Installation: Bottom of drawer, Screw fixing
- ▶ Product Features: Silent system, The built-in damper makes the door close gentle and quietly, Easy to disassemble

25kg	1.5*1.5mm	250-600mm	16mm/18mm	1set/poly bag 10sets/carton



Half Extension Soft Closing Undermount Drawer Slides
SL4264
TALLSEN

UNDERMOUNT SLIDES

www.tallsen.com



FULL EXTENSION UNDERMOUNT DRAWER SLIDES



- ▶ Main material: Galvanized steel
- ▶ Installation: Bottom of drawer, Screw fixing
- ▶ Product Features: Silent system, The built-in damper makes the door close gentle and quietly, Easy to disassemble

30kg	1.8*1.5*1.0mm	250-600mm	16mm/18mm	1set/poly bag 10sets/carton



HALF EXTENSION UNDERMOUNT DRAWER SLIDES



- ▶ Main material: Galvanized steel
- ▶ Installation: Bottom of drawer, Screw fixing
- ▶ Product Features: Silent system, The built-in damper makes the door close gentle and quietly, Easy to disassemble

25kg	1.5*1.5mm	250-600mm	16mm/18mm	1set/poly bag 10sets/carton



UNDERMOUNT SLIDES

www.tallsen.com



FULL EXTENSION SOFT CLOSING UNDERMOUNT DRAWER SLIDES



- ▶ Main material: Galvanized steel
- ▶ Installation: Bottom of drawer, Screw fixing
- ▶ Product Features: Silent system, The built-in damper makes the door close gentle and quietly, Easy to disassemble

30kg	1.8*1.5*1.0mm	250-600mm	+25%	16mm/18mm	1set/poly bag 10sets/carton

FULL EXTENSION PUSH TO OPEN UNDERMOUNT DRAWER SLIDES




- ▶ Main material: Galvanized steel
- ▶ Installation: Bottom of drawer, Screw fixing
- ▶ Product Features: The rebound device makes the drawer open when pushing it lightly, handles-free design

30kg	1.8*1.5*1.0mm	250-600mm	16mm/18mm	1set/poly bag 10sets/carton




 Cushion Undermount Drawer Slides
SL4321
TALLSEN




 Full Extension buffer Undermount Drawer Slides
SL4336
TALLSEN



 Half Extension Push To Open Undermount Drawer Slides
SL4342
TALLSEN



 Full Extension Push To Open Hidden Drawer Slides
SL4341
TALLSEN



 Soft Close Concealed Drawer Slides Undermount drawer slides
SL4328
TALLSEN

UNDERMOUNT SLIDES

www.tallsen.com



FULL EXTENSION SYNCHRONIZED SOFT CLOSING UNDERMOUNT DRAWER SLIDES



- ▶ Main material: Galvanized steel
- ▶ Installation: Bottom of drawer, Screw fixing
- ▶ Product Features: Silent system, The built-in damper makes the door close gentle and quietly, Easy to disassemble

30kg	1.8*1.5*1.0mm	250-600mm	+25%	16mm/18mm	1set/poly bag 10sets/carton


FULL EXTENSION SYNCHRONIZED PUSH TO OPEN UNDERMOUNT DRAWER SLIDES




- ▶ Main material: Galvanized steel
- ▶ Installation: Bottom of drawer, Screw fixing
- ▶ Product Features: The rebound device makes the drawer open when pushing it lightly, handles-free design

30kg	1.8*1.5*1.0mm	250-600mm	16mm/18mm	1set/poly bag 10sets/carton




 Synchronized Bolt Locking Hidden Drawer Rails
SL4710
TALLSEN




 Full extension Synchronous soft close undermount drawer slides
SL4720
TALLSEN




 Full Extension Synchronous Push To Open Undermount Drawer Slides
SL4820
TALLSEN



 Simultaneous Push Open Concealed Undermount Runner
SL4830
TALLSEN



 Synchronization Bouncing Undermount Drawer Channel
SL4730
TALLSEN

UNDERMOUNT SLIDES




www.tallsen.com



AMERICAN TYPE FULL EXTENSION SOFT CLOSING UNDERMOUNT DRAWER SLIDES



- ▶ Main material: Galvanized steel
- ▶ Installation: Bottom of drawer, Screw fixing
- ▶ Product Features: Silent system, The built-in damper makes the door close gentle and quietly, Easy to disassemble

				
30kg	1.8*1.5*1.0mm	12"-21"	16mm/18mm	1set/poly bag 10sets/carton



American Type Full Extension Soft Closing Undermount Drawer Slides
SL4357
TALLSEN






American Type 15 Inch 21 Inch Full Extension Soft Close Undermount Drawer Slides
SL4358
TALLSEN

AMERICAN TYPE FULL EXTENSION PUSH OPEN UNDERMOUNT DRAWER SLIDES



- ▶ Main material: Galvanized steel
- ▶ Installation: Bottom of drawer, Screw fixing
- ▶ Product Features: The rebound device makes the drawer open when pushing it lightly, handles-free design

				
30kg	1.8*1.5*1.0mm	12"-21"	16mm/18mm	1set/poly bag 10sets/carton



American Type Full Extension Push-To-Open Undermount Drawer Slides
SL4365
TALLSEN



American Type 15 Inch 21 Inch Push To Open Undermount Drawer Slides
SL4366
TALLSEN

TALLSEN

 Deutsche Qualität **Nr. 30 2021 100 599**