

TECHNICAL SUPPORT

Having technical problems with this product?

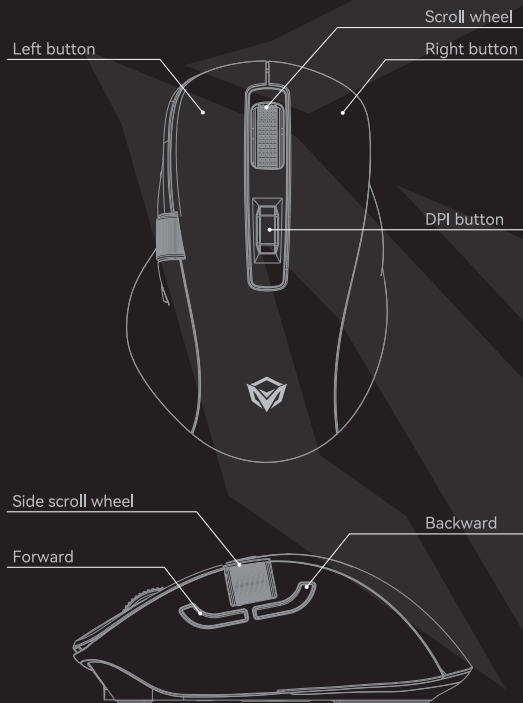
Send an email to
service@meetion.com

For more information please visit:
www.meetion.com

GW32
USER'S MANUAL

Wireless Gaming Mouse

GW32 BUTTONS DESCRIPTION



WARRANTY CARD

Model No. 型号		
Date of Sale 购买日期		
Seller 销售商		
Serial Number 序列号		
Address of the Seller 销售商地址		
Phone of the Seller 销售商电话		
Seller Signature & Stamp 销售商签字盖章		Stamp
To be Filled in by Service Center 以下由服务中心填写		
Date of Receipt 收货日期	Date of Receipt 收货日期	Date of Receipt 收货日期
Date of Return 返回日期	Date of Return 返回日期	Date of Return 返回日期
Special Marks 特殊记录	Special Marks 特殊记录	Special Marks 特殊记录

NOTE

- Technical specifications given in this table are supplemental information and cannot give occasion to claims.
- Technical specifications are subject to change without notice due to improvement of MEETION production.
- Technical support by Meetion Tech.

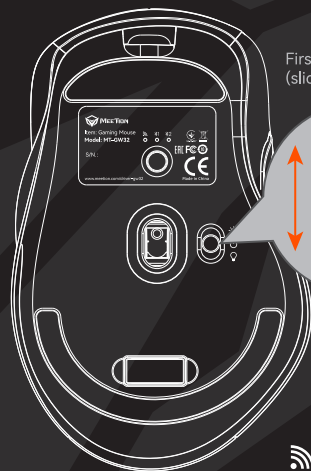


GENERAL

- The safe product, conforming to the US and EU requirements
- The product is made in accordance with RoHS standard. The product is made in accordance with FCC standard. The standard was issued in order to decrease the amount of the electronic and electrical waste emitted into the atmosphere.
- The WEEE symbol (the crossed-out wheeled bin) using indicates that this product is not home waste. You protect the environment when you recycle hazardous waste appropriately. In order to get detailed information about recycling this product, please contact your retailer or a local authority.

GW32

2.4G MODE: SWITCH TO 2.4G MODE AND INSERT THE 2.4G RECEIVER.



First, slide it up or down
(slide it up to see the RGB LED)



Then press the mode switch button,
when the indicator light flashes green,
plug in the 2.4G receiver

GW32 BLUETOOTH MODE CONNECTION

Step 1



CONGRATULATIONS ON THE PURCHASE OF MEETION PRODUCTS!

Please read this user's manual before using the unit and retain this user's manual in a safe place for future reference.

COPYRIGHT

©2020. MEETION TECH CO., LTD. Version 1.0(V 1.0). This Manual and information contained in it are copyrighted. All rights reserved.

TRADEMARKS

All trademarks are the property of their legal holders

SPECIAL FEATURES

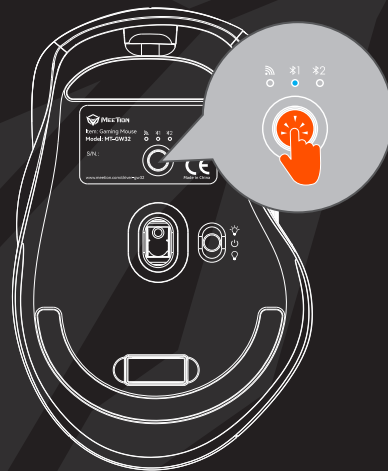
- Supports multiple connection methods: 2.4G + Bluetooth + wired
- Right-handed ergonomics
- Adjustable up to 8000DPI
- Adjustable cool LED light, 1600 colors
- 1ms ultra-low response delay
- Large battery capacity, can be used continuously for 35 hours
- Local driver can set various mouse parameters

GW32 TECHNICAL SPECIFICATION

Color:	Black/White
Connection method:	2.4G+Bluetooth+wired
Backlight:	RGB Colorful
Resolution:	400~8000DPI
Buttons:	7Keys
Game Type:	FPS/MMORPG/MOBA/RTS
Polling Rate:	125~1000Hz/1ms
Interface:	Type-C
Dimension:	117.7*73.4*43.7mm
Weight:	98g
Battery capacity:	700mAh
Charging time:	2-3 hours
Software:	www.meetion.com/driver/GW32

GW32 BLUETOOTH MODE CONNECTION

Step 2



Then press the mode switch button, when the indicator light flashes blue, continue to press and hold for more than 3 seconds the blue indicator light blinks fast to indicate that it has entered the pairing status

GW32 BLUETOOTH MODE CONNECTION

Step 3

Add a device

Add a device

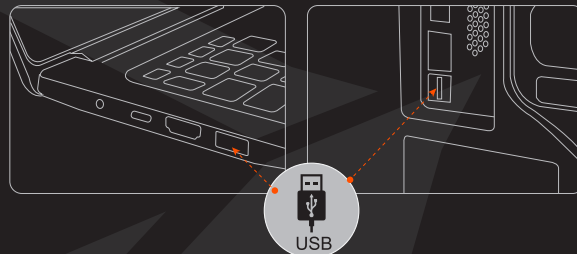
Make sure your device is turned on and discoverable. Select a device connect.

OnePlus 7TPro

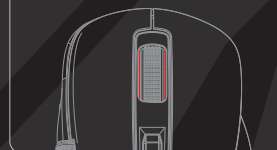
MEETION MS_BT1

Turn on the Bluetooth on your PC, find the Bluetooth name "MEETION MS_BT1", click pairing, and the blue light stops flashing, indicating a successful connection.

GW32 CHARGE



Charging indicator




Low battery indicator



First, plug one end of the included cable into the mouse and the other end into the computer, then the red light turns on to indicate that it is charging, and the mouse's connection mode switches to wired mode. When the battery is fully charged, the red light turns off.

When the red indicator light starts flashing, it means the mouse is low on power, please start charging immediately!

 Tip: The maximum charging voltage should not exceed 5V.

GW32说明书-骑马钉装订

材质：100g书纸

印刷：四色印刷

成品尺寸：90×120mm