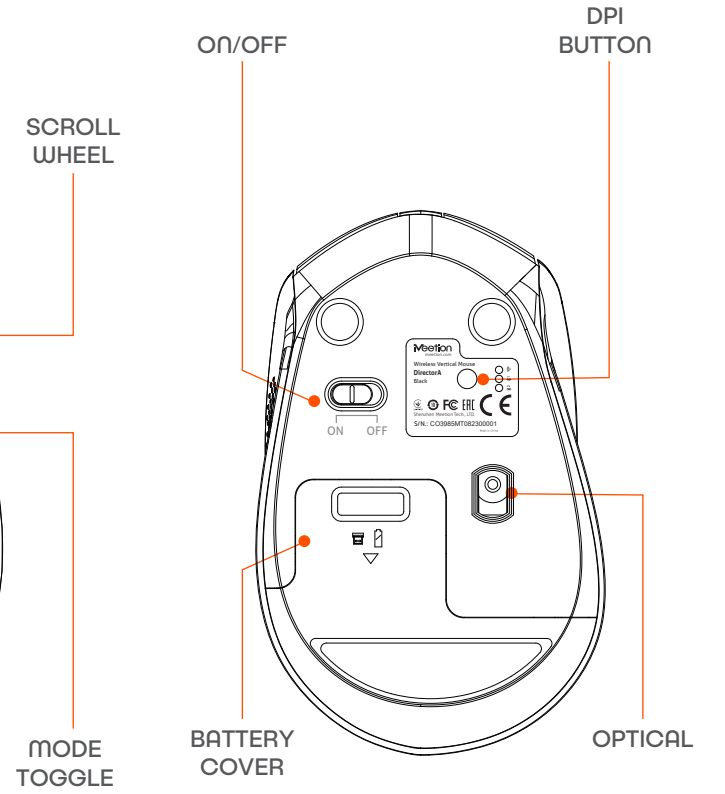
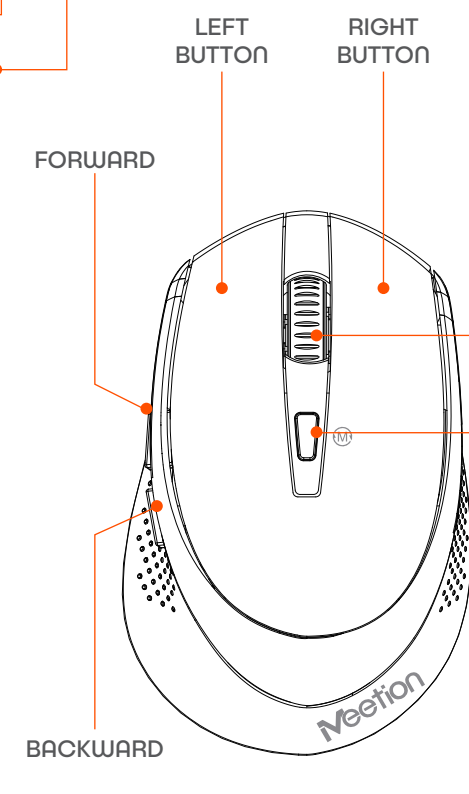
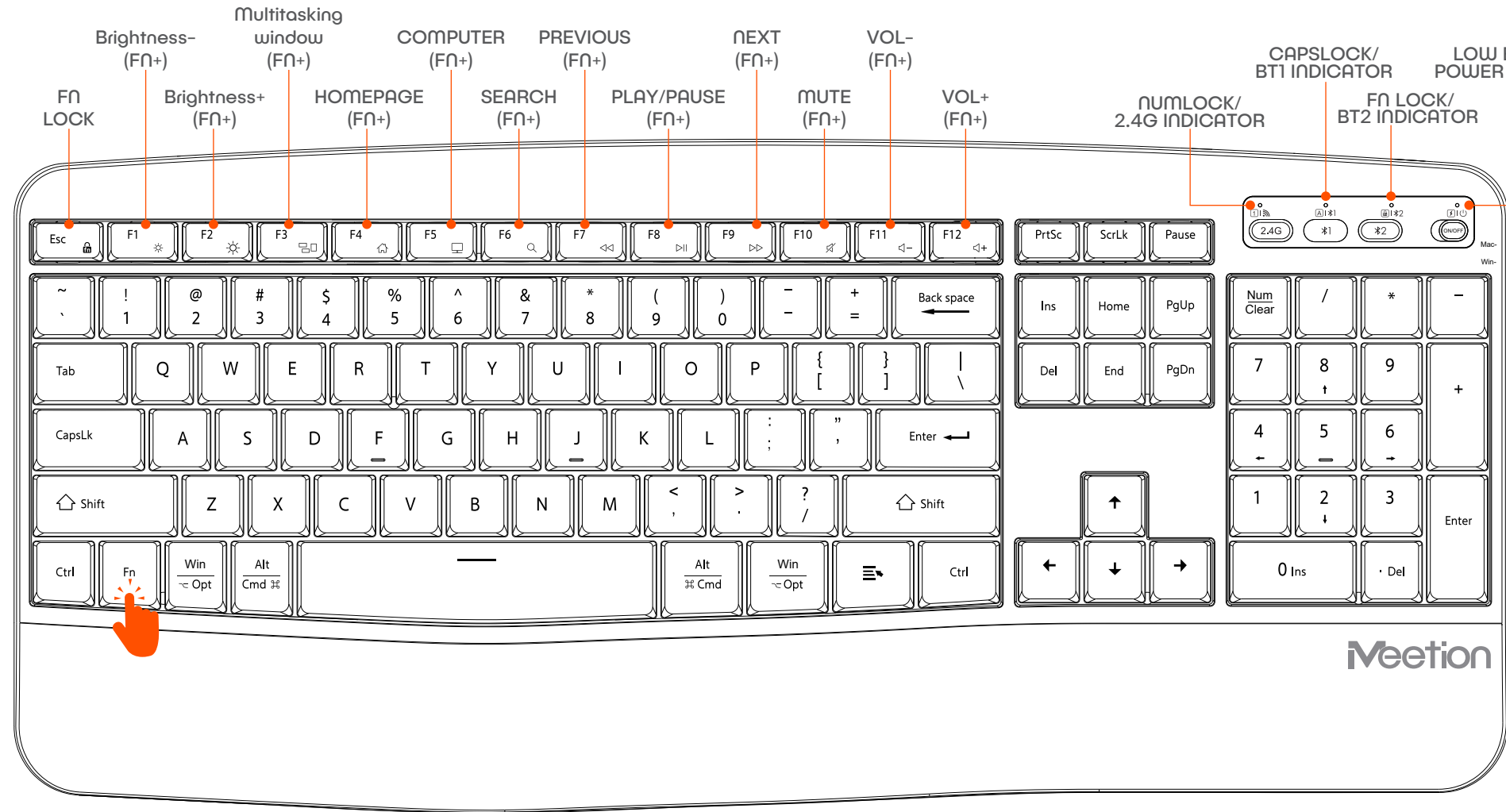


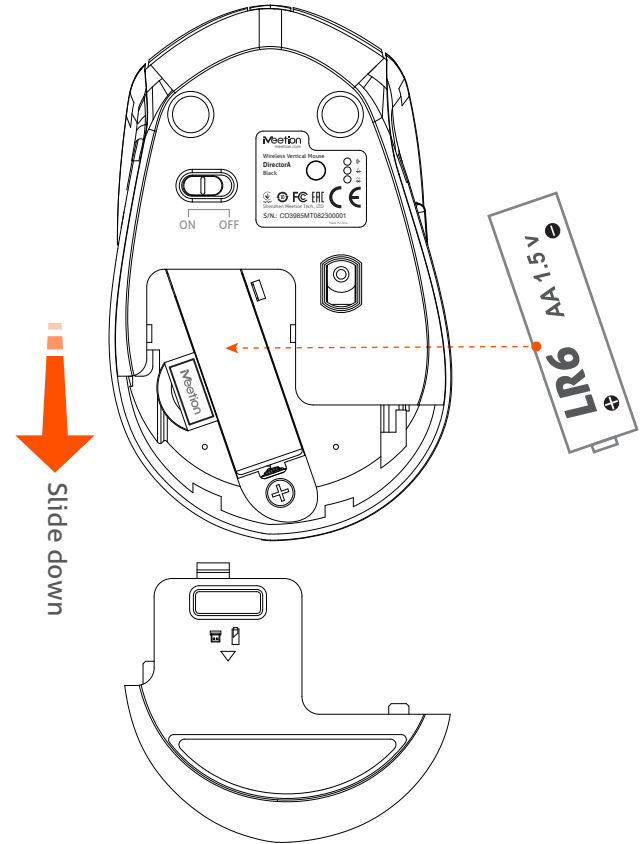
# FN+MULTIMEDIA FUNCTION KEYS



## 2.4G CONNECTION(MOUSE)

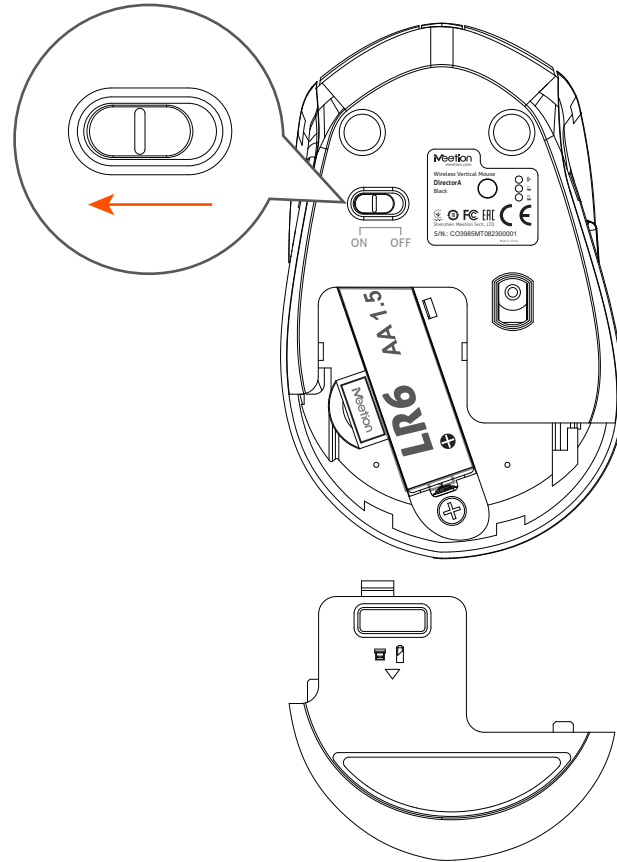
Meetion

1



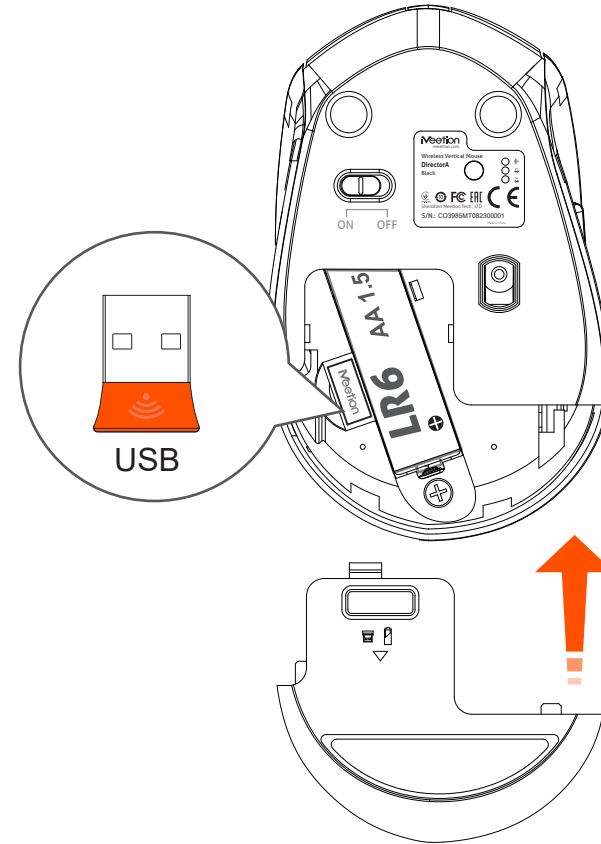
Open the battery compartment cover on the bottom of the mouse and insert an AA battery

2



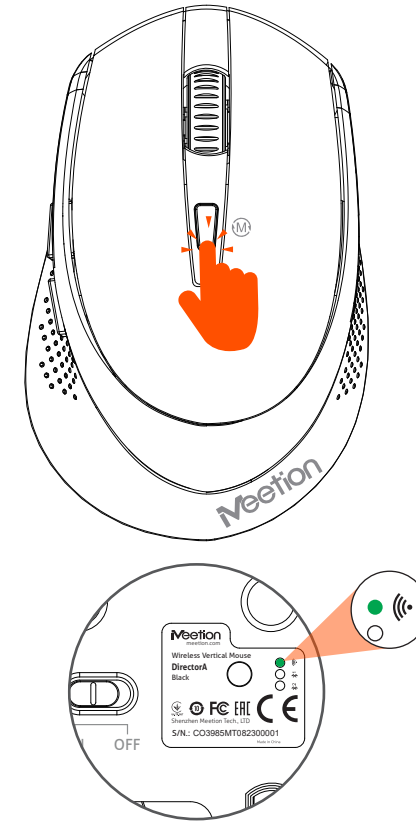
Turn on the mouse power switch

3



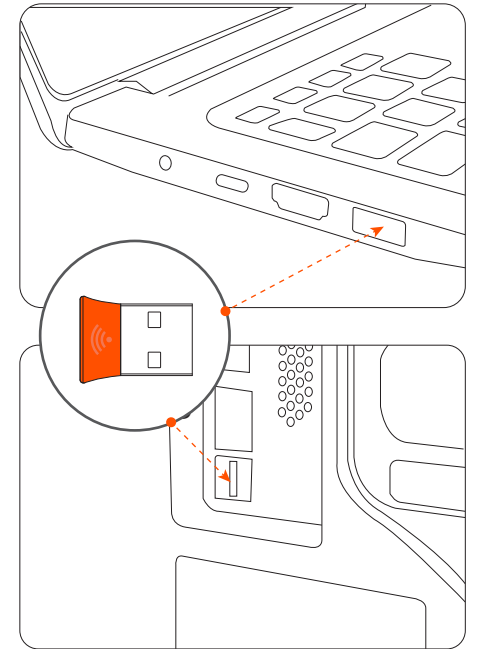
Remove the USB receiver at the bottom of the mouse and close the battery compartment cover

4



Press the mode switch button to switch to 2.4G mode, and the light is green

5

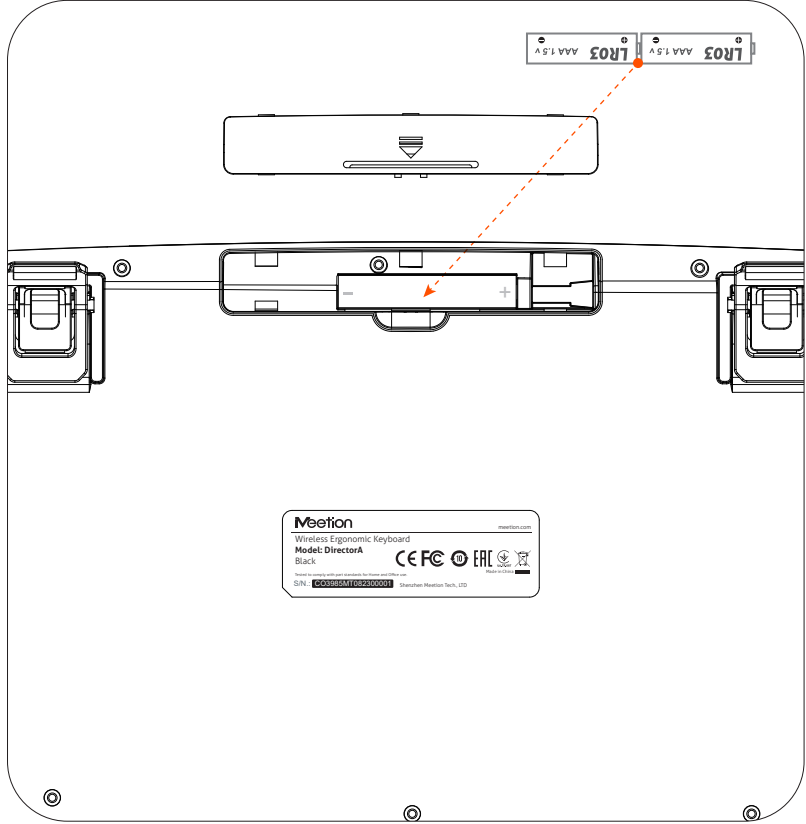


Insert computer USB interface  
(When the product is used for the first time, an automatic hardware installation prompt will pop up in the lower right corner of the computer)

# 2.4G CONNECTION(KEYBOARD)

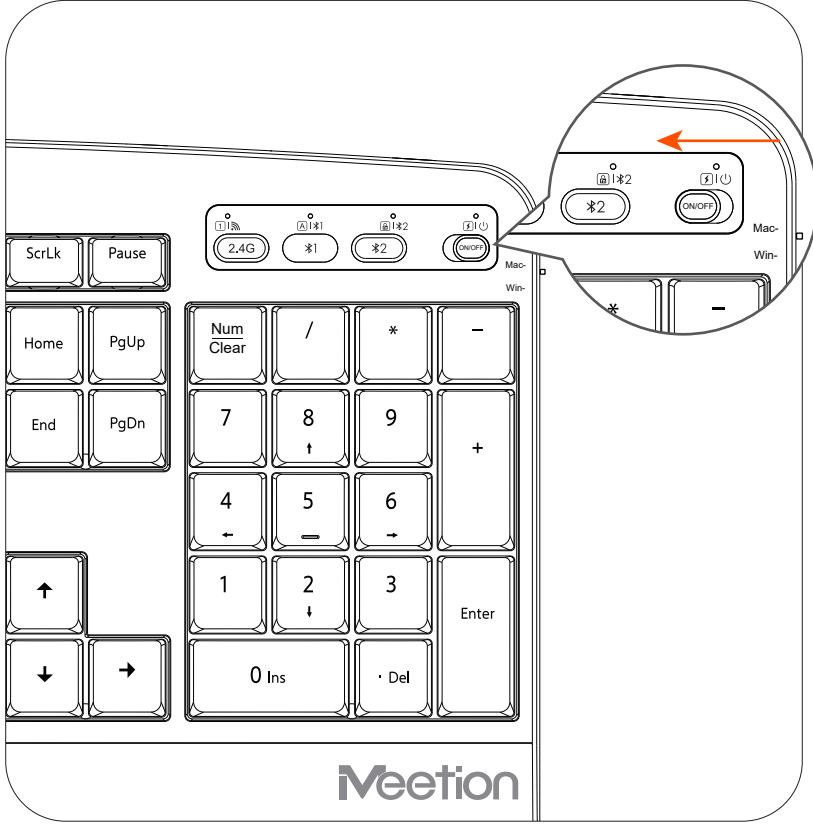


1



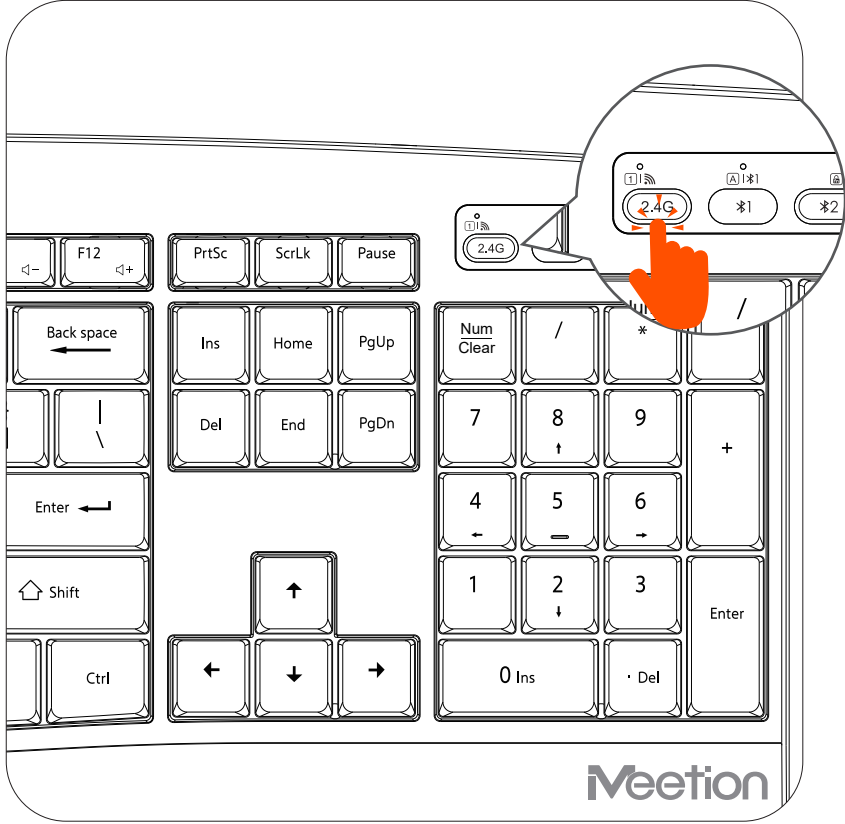
Open the battery case cover on the bottom of the keyboard and insert 2 AAA batteries

2



Turn on the keyboard power switch

3

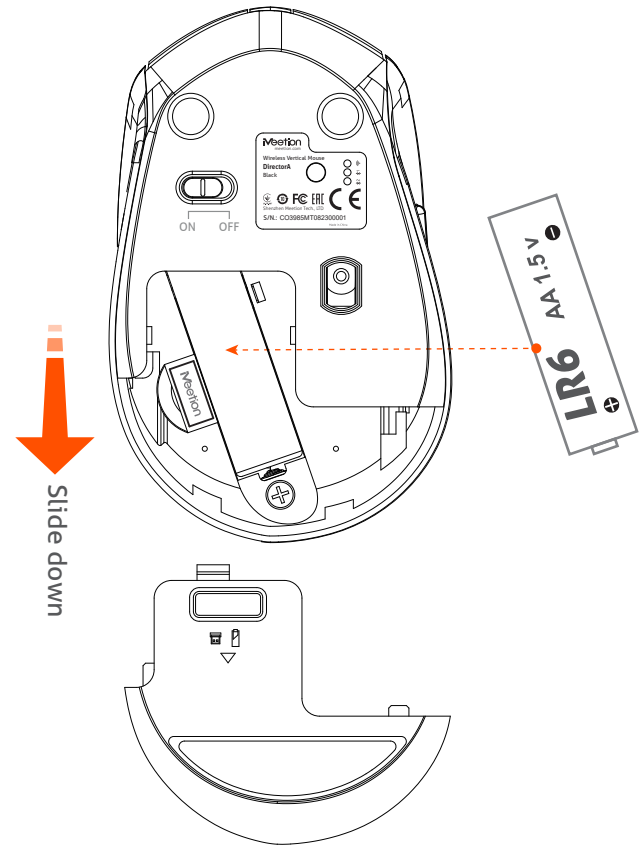


Tap here to enter 2.4G mode

# BLUETOOTH CONNECTION(MOUSE) 1

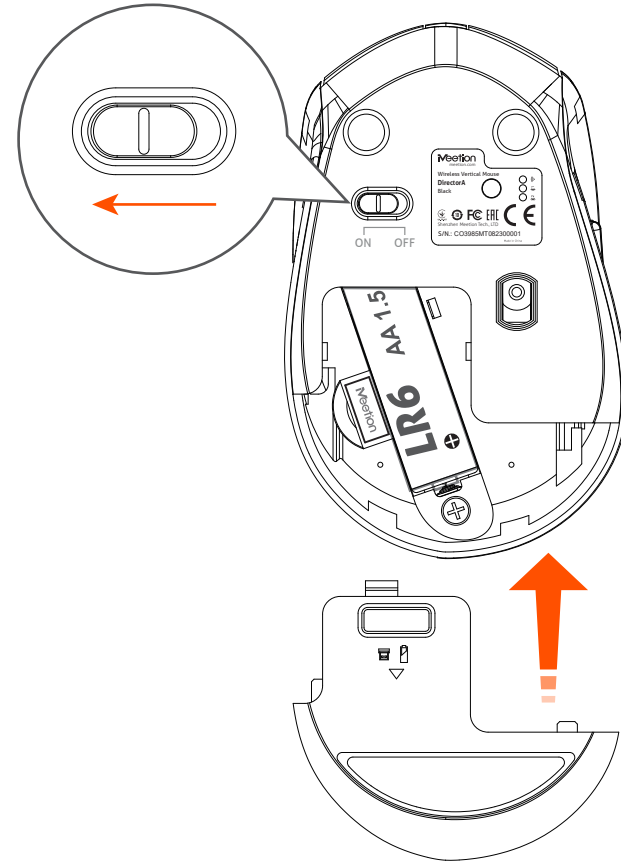


1



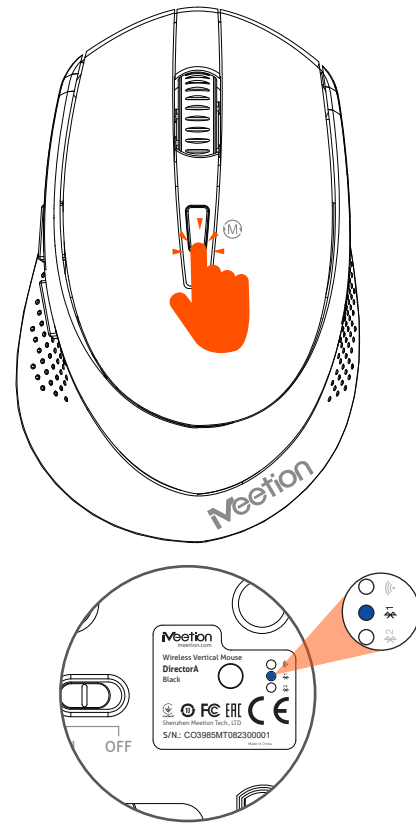
Open the battery compartment cover on the bottom of the mouse and insert an AA battery

2



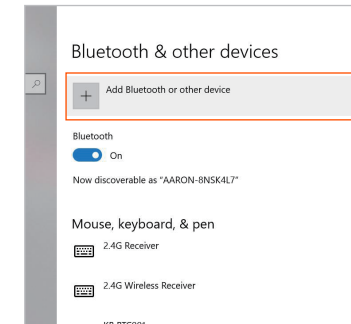
Turn on the mouse power switch, and close the battery case cover

3

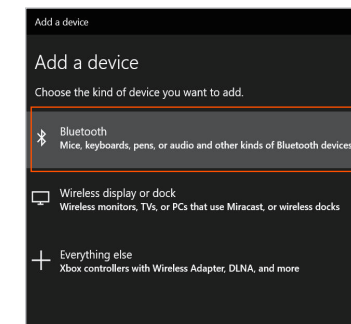


Short press the mode switch button, switch to Bluetooth 1, then the blue light flashes you can perform code matching

4

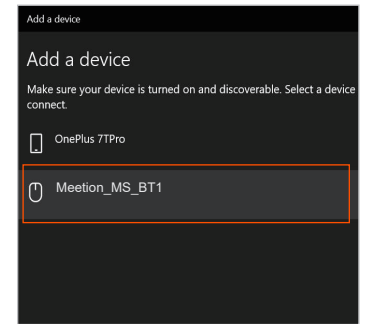


Turn on the computer Bluetooth switch to enter the Bluetooth settings page

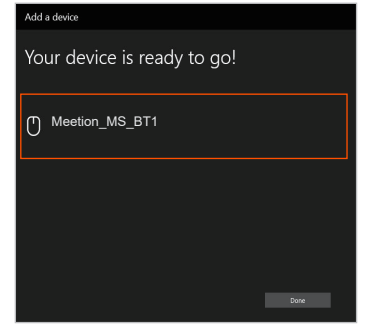


Click to add Bluetooth or other devices, click to add Bluetooth mouse, keyboard, and other devices

5



Find the device named Meetion\_MS\_BT1 and click on Add Pairing

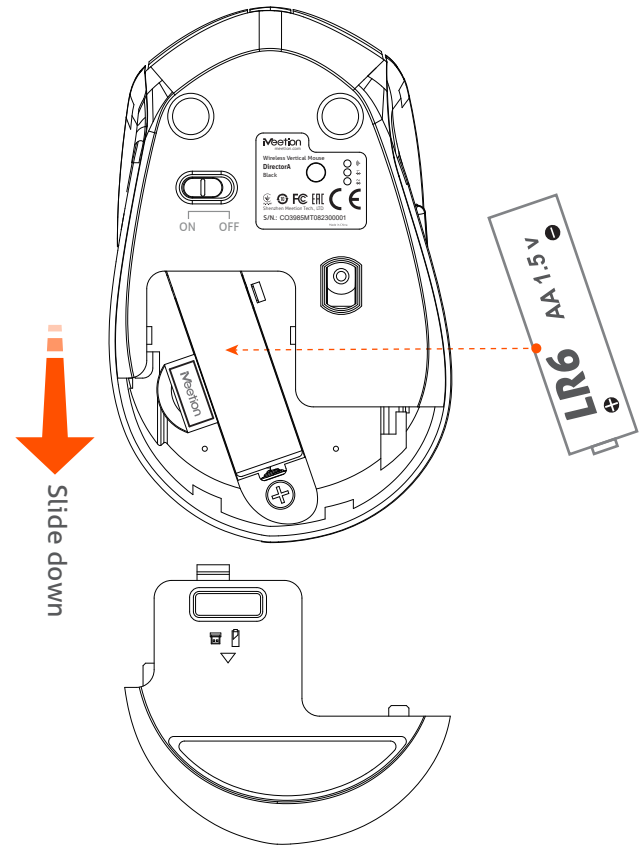


Paired successfully

# BLUETOOTH CONNECTION(MOUSE) 2

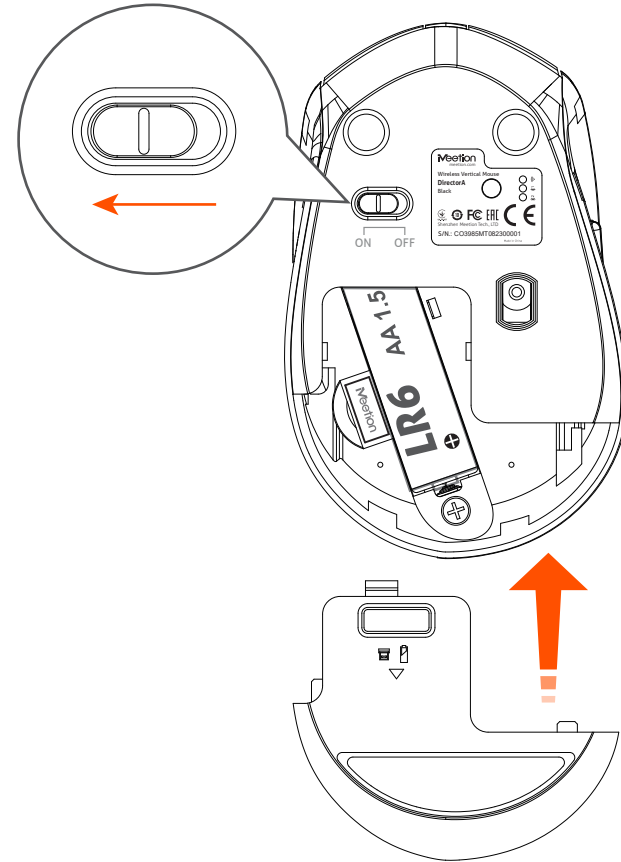


1



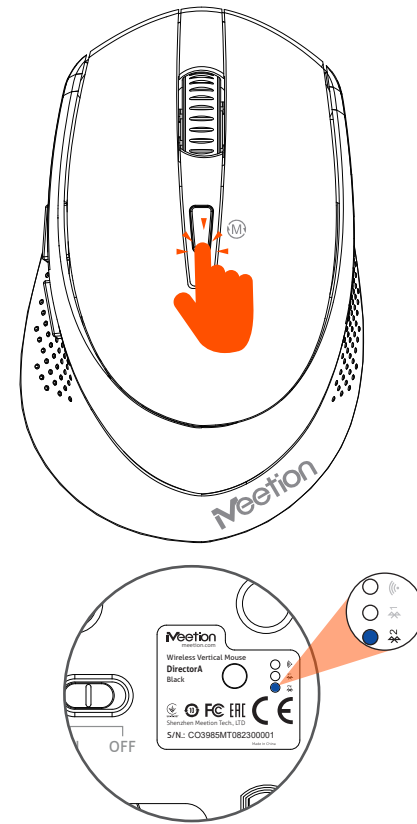
Open the battery compartment cover on the bottom of the mouse and insert an AA battery

2



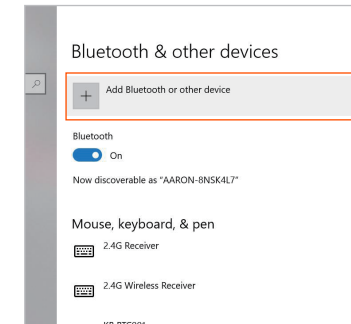
Turn on the mouse power switch, and close the battery case cover

3

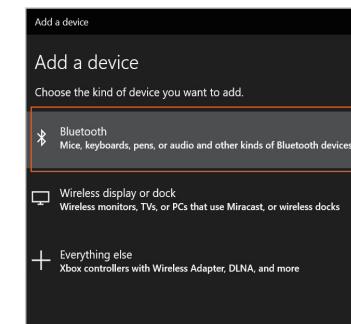


Short press the mode switch button, switch to Bluetooth 2, then the blue light flashes you can perform code matching

4

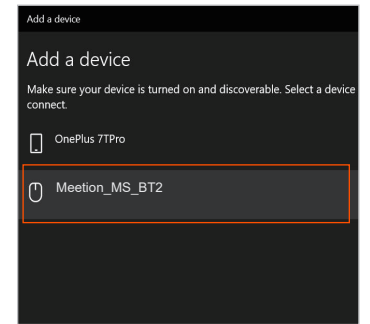


Turn on the computer Bluetooth switch to enter the Bluetooth settings page

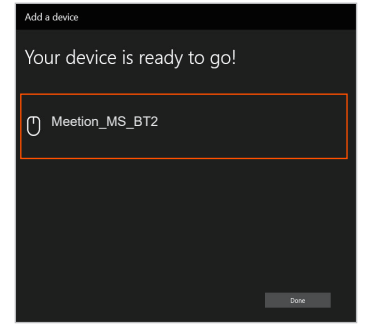


Click to add Bluetooth or other devices, click to add Bluetooth mouse, keyboard, and other devices

5

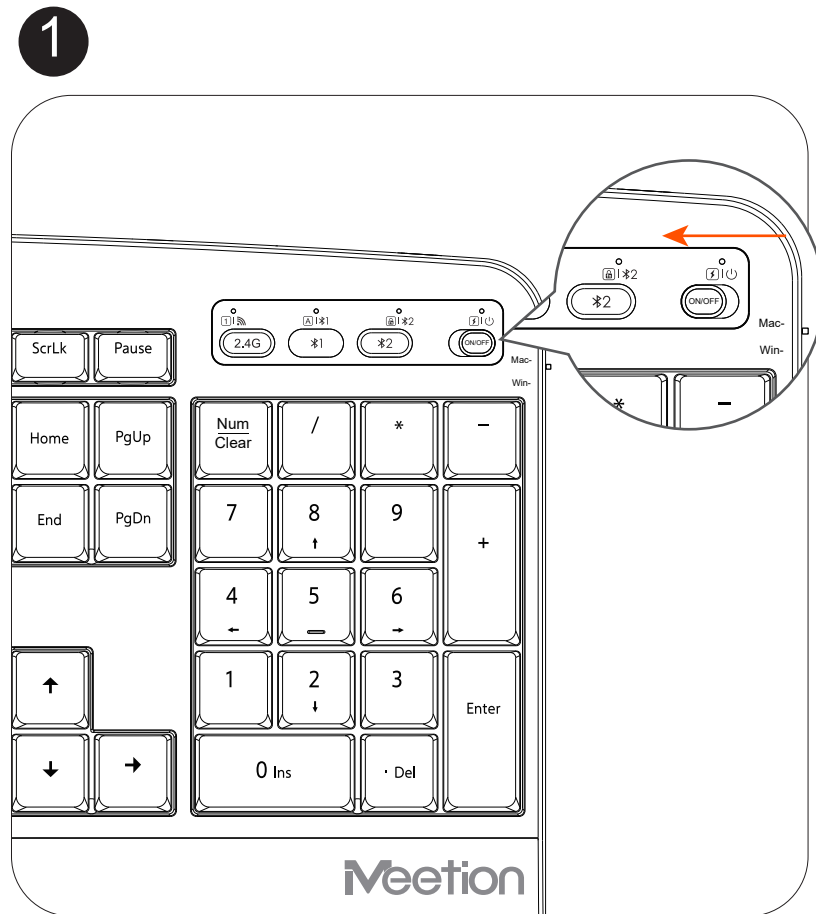


Find the device named Meetion\_MS\_BT2 and click on Add Pairing

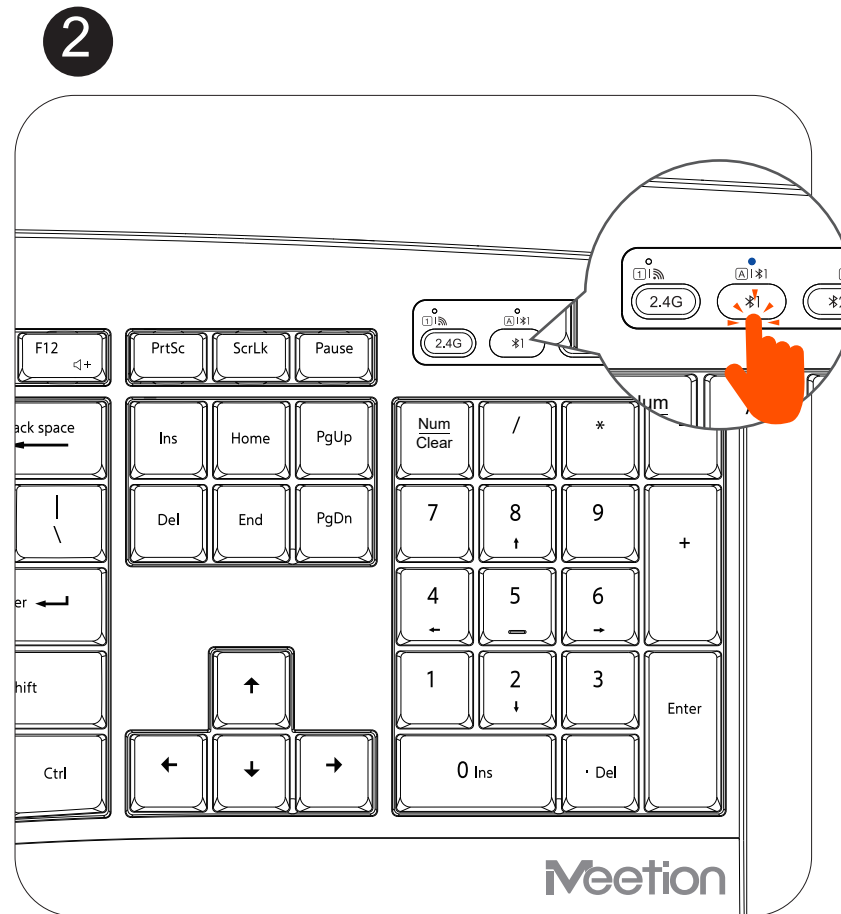


Paired successfully

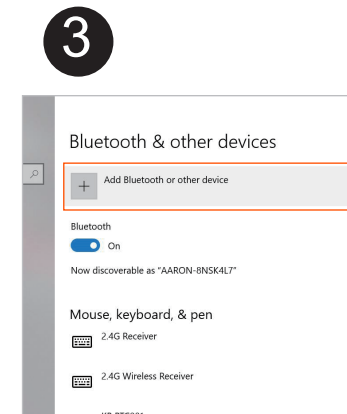
# BLUETOOTH CONNECTION(KEYBOARD) 1



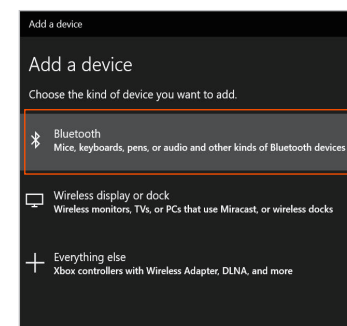
Turn on the keyboard power switch



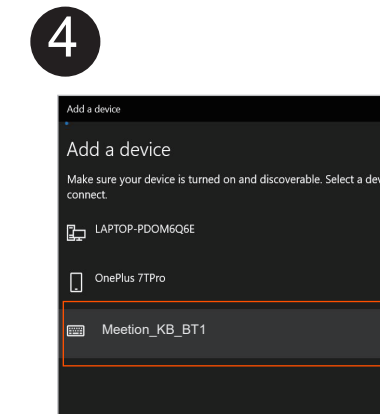
Click here to enter Bluetooth 1 mode pairing, blue light flashing



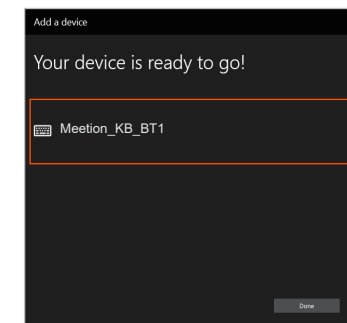
Turn on the computer Bluetooth switch to enter the Bluetooth settings page



Click to add Bluetooth or other devices, click to add Bluetooth mouse, keyboard, and other devices



Find the device named Meetion\_KB\_BT1 and click on Add Pairing

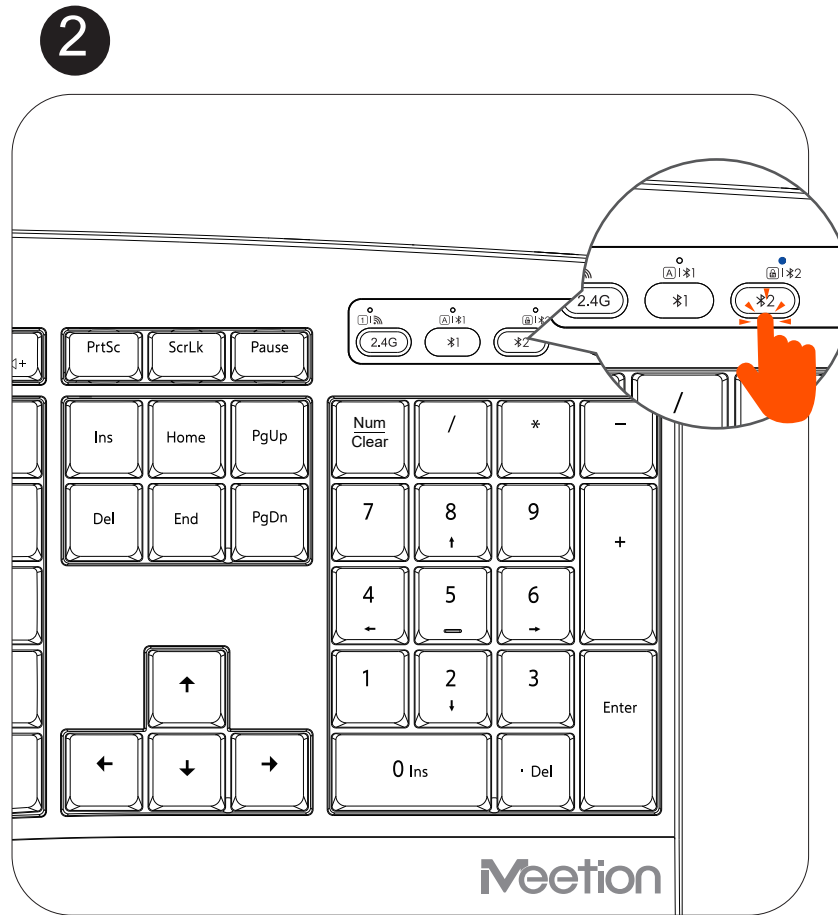


Paired successfully

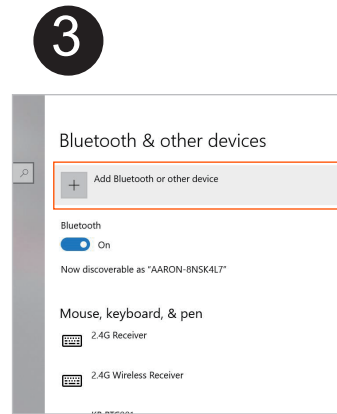
# BLUETOOTH CONNECTION(KEYBOARD) 2



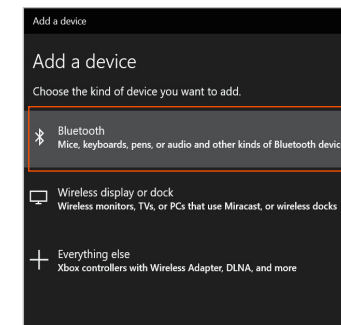
Turn on the keyboard power switch



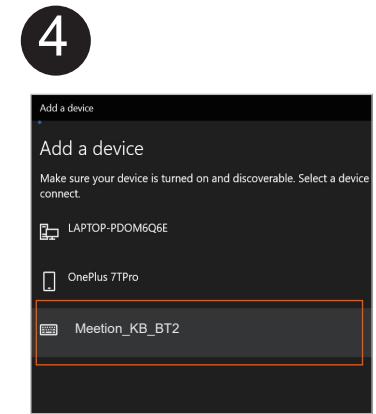
Click here to enter Bluetooth 2 mode pairing, blue light flashing



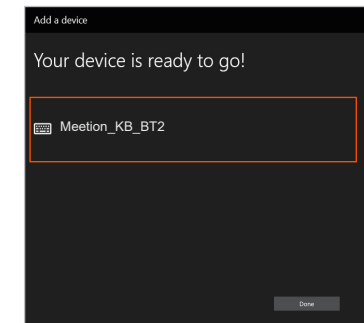
Turn on the computer Bluetooth switch to enter the Bluetooth settings page



Click to add Bluetooth or other devices, click to add Bluetooth mouse, keyboard, and other devices

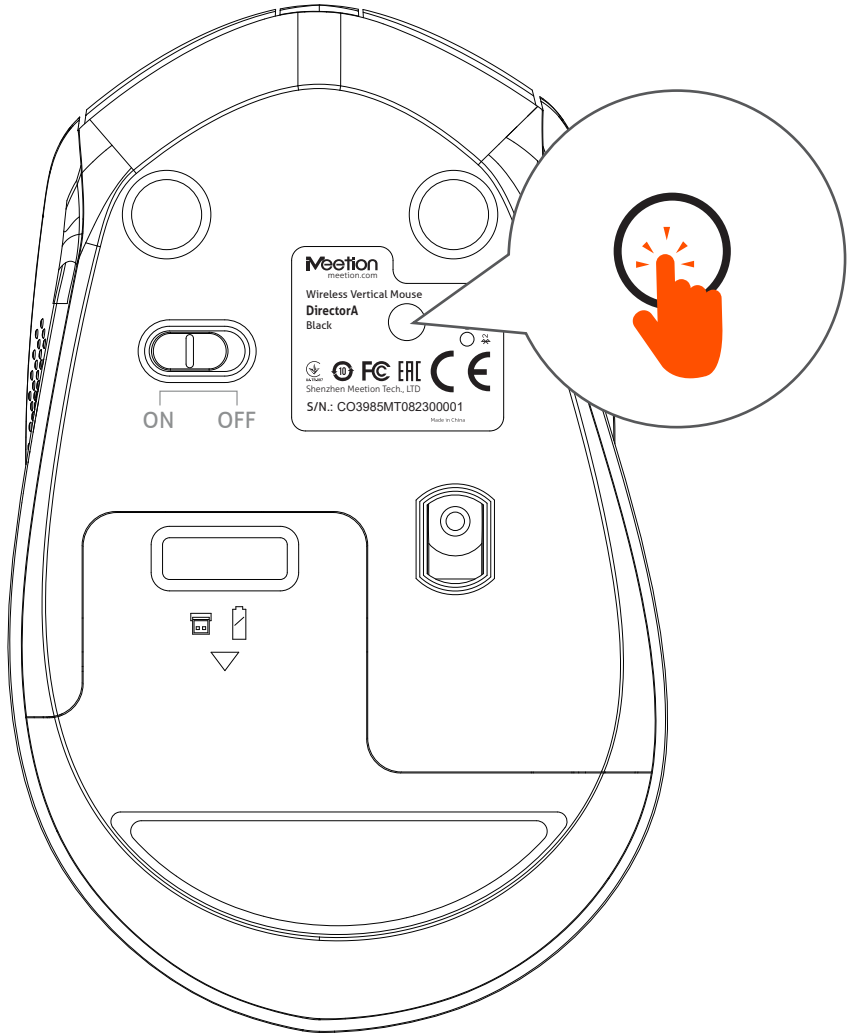


Find the device named Meetion\_KB\_BT2 and click on Add Pairing

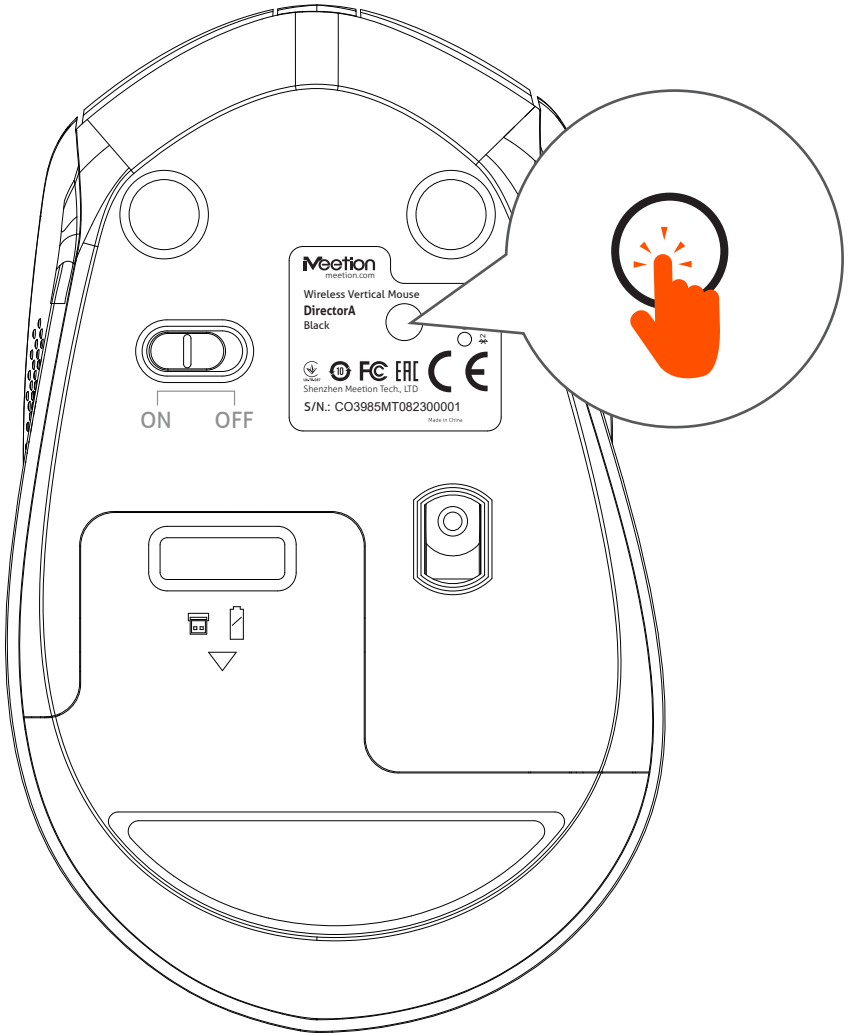


Paired successfully

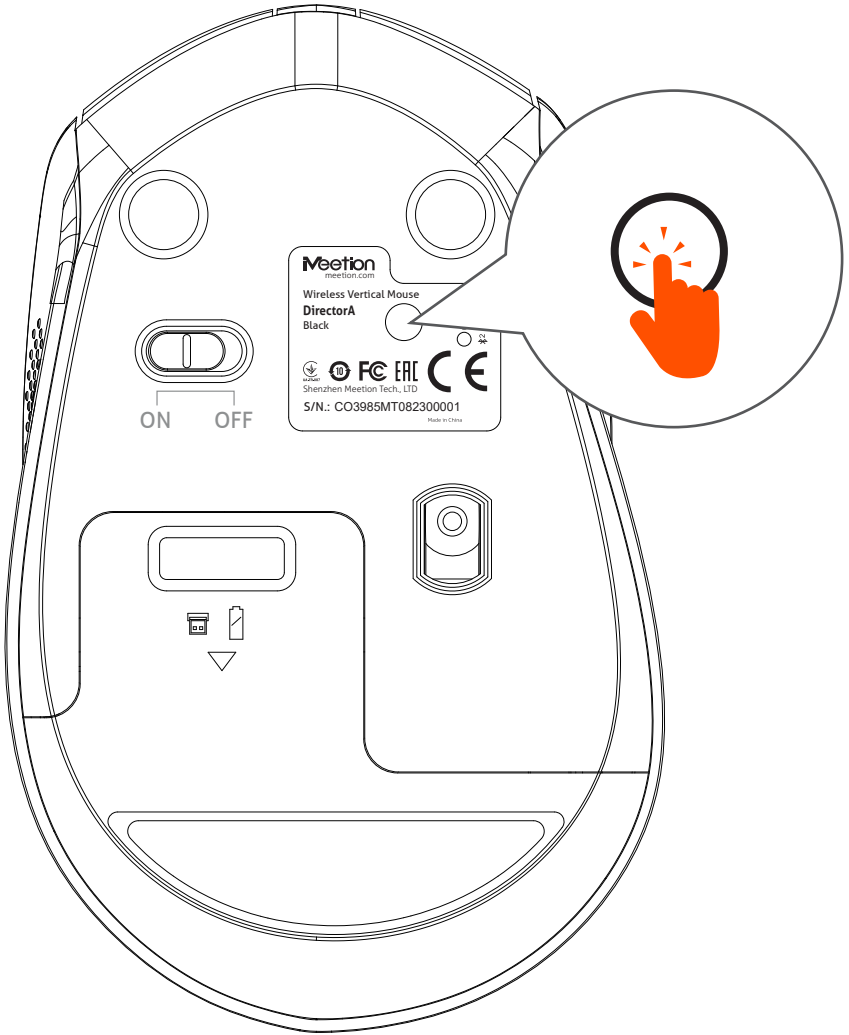
# DPI ADJUSTMENT (MOUSE)



Press the DPI button once, 800 DPI (slow cursor movement)



Press the DPI button again, 1200 DPI (cursor moves moderately)



Press the DPI button again for 1600 DPI (faster cursor movement)



## GENERAL

All products under the MEETION brand comply with the US FCC standards with FCC ID: 2A706. The product is made in accordance with RoHS standard.

## PRECAUTIONS

1. This product contains a 1\*AAA battery, 2\*AA battery.
  - (1) Do not dismantle, strike, crush, or put it into a fire.
  - (2) Stop using it immediately if severe swelling occurs.
  - (3) Do not place it in a high-temperature environment.
2. Do not use this device near water.
3. Only use a dry cloth to clean this product.
4. Please follow the manufacturer's instructions for use.
5. If the device is damaged, for example, if liquid enters it, if it gets wet in the rain or becomes damp, or if it cannot operate normally, it must be repaired. For repair matters, it should be entrusted to qualified maintenance personnel.

## KIND TIPS

If the product will not be used for a long period of time, it is recommended to turn off the power switch of the keyboard and mouse, and to remove the batteries to prevent them from failing due to prolonged non-use.

## WARRANTY CARD

Model No. 型号		
Date of Sale 购买日期		
Seller 销售商		
Serial Number 序列号		
Address of the Seller 销售商地址		
Phone of the Seller 销售商电话		
Seller Signature & Stamp 销售商签字盖章		
<div style="border: 1px dashed black; border-radius: 50%; width: 40px; height: 40px; display: flex; align-items: center; justify-content: center;">Stamp</div>		
To be Filled in by Service Center 以下由服务中心填写		
Date of Receipt 收货日期	Date of Receipt 收货日期	Date of Receipt 收货日期
Date of Return 返回日期	Date of Return 返回日期	Date of Return 返回日期
Special Marks 特殊记录	Special Marks 特殊记录	Special Marks 特殊记录



## TECHNICAL SUPPORT

Having technical problems with this product?

Send an email to [service@meetion.com](mailto:service@meetion.com)

For more information please visit:

[www.meetion.com](http://www.meetion.com)