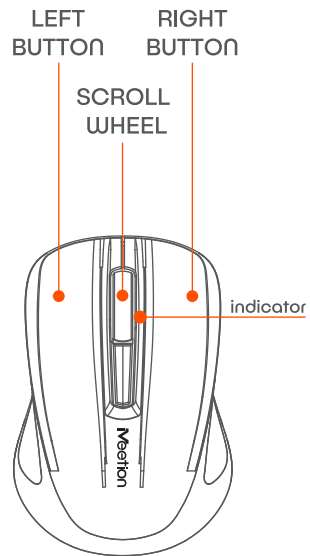
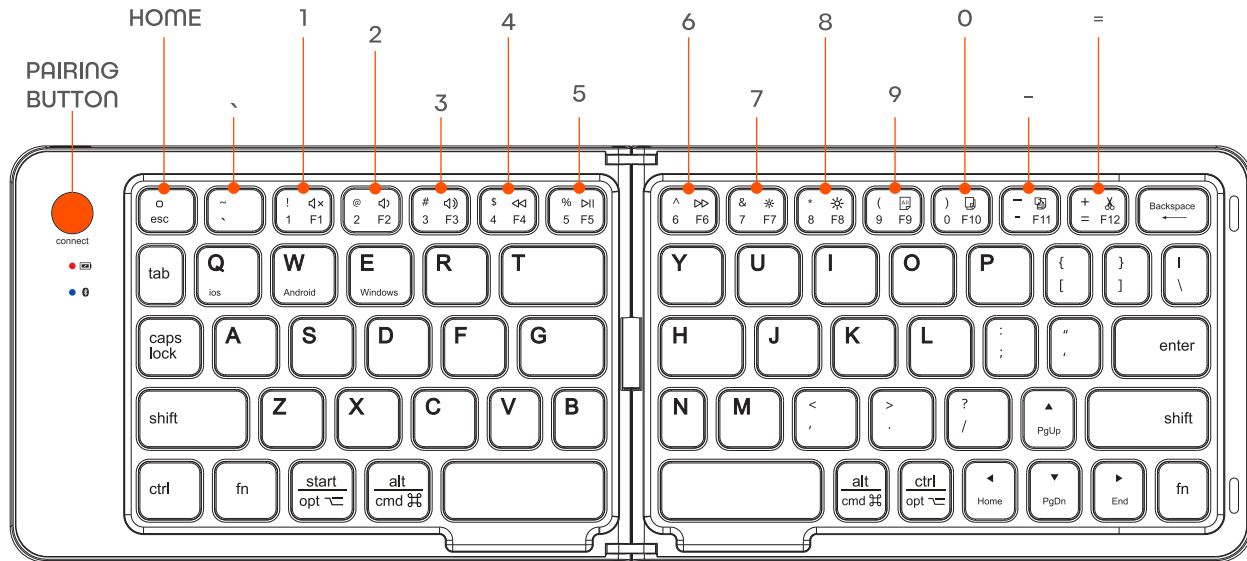
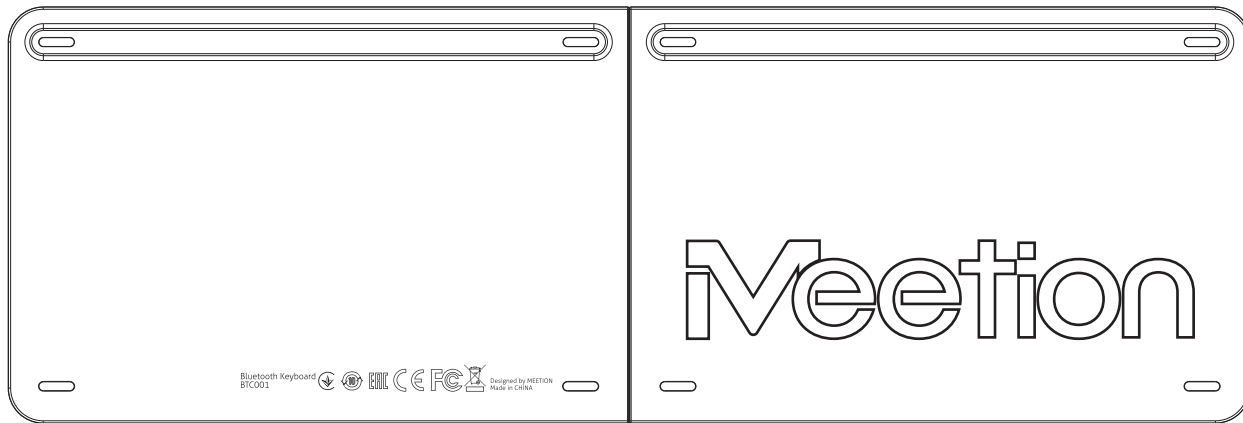


BTC001 | **BLUETOOTH** 
FOLDING KEYBOARD & MOUSE

default



default



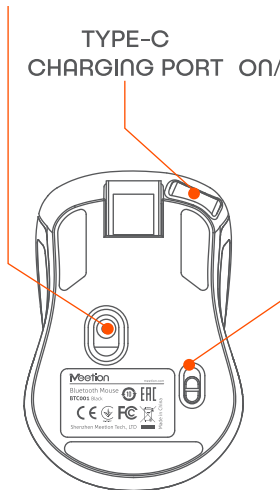
Bluetooth Keyboard
BTC001

CE FCC EAT

Designed by MEETION
Made in China

OPTIONAL

TYPE-C
CHARGING PORT ON/OFF



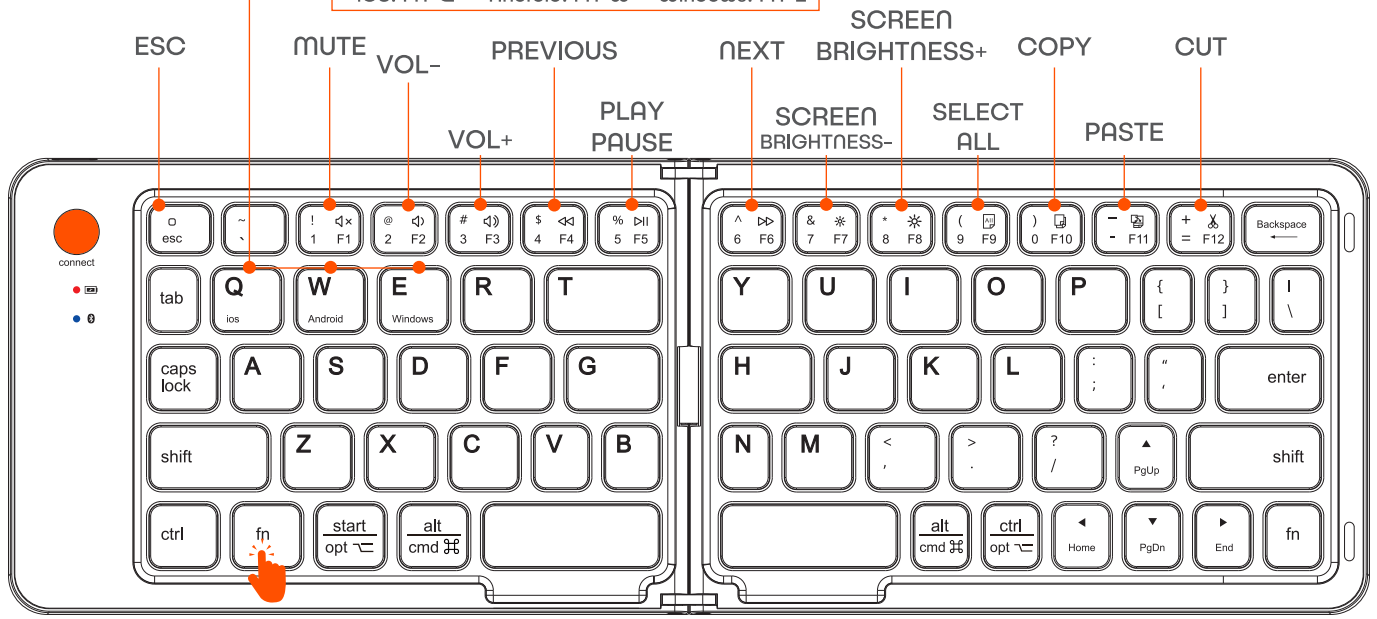
Meetion
Bluetooth Mouse
BTC002 (Mush)

CE FCC EAT

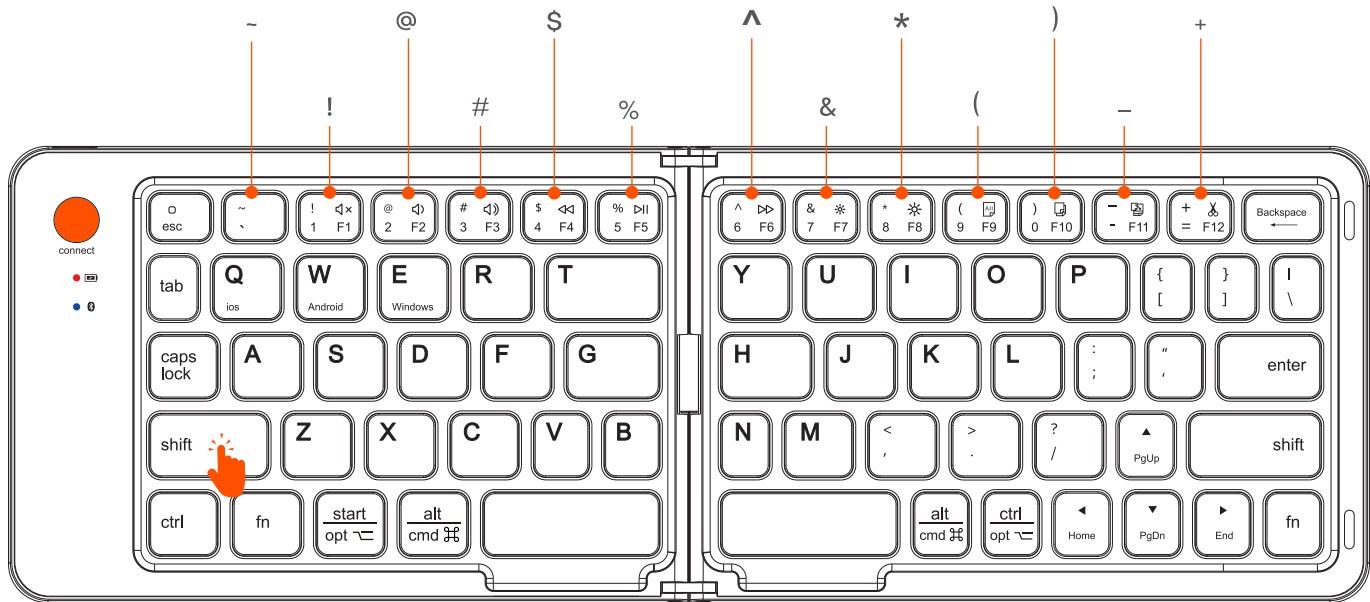
Shenzhen Meeteek Tech, LTD
Made in China

The function of fn+ combination keys

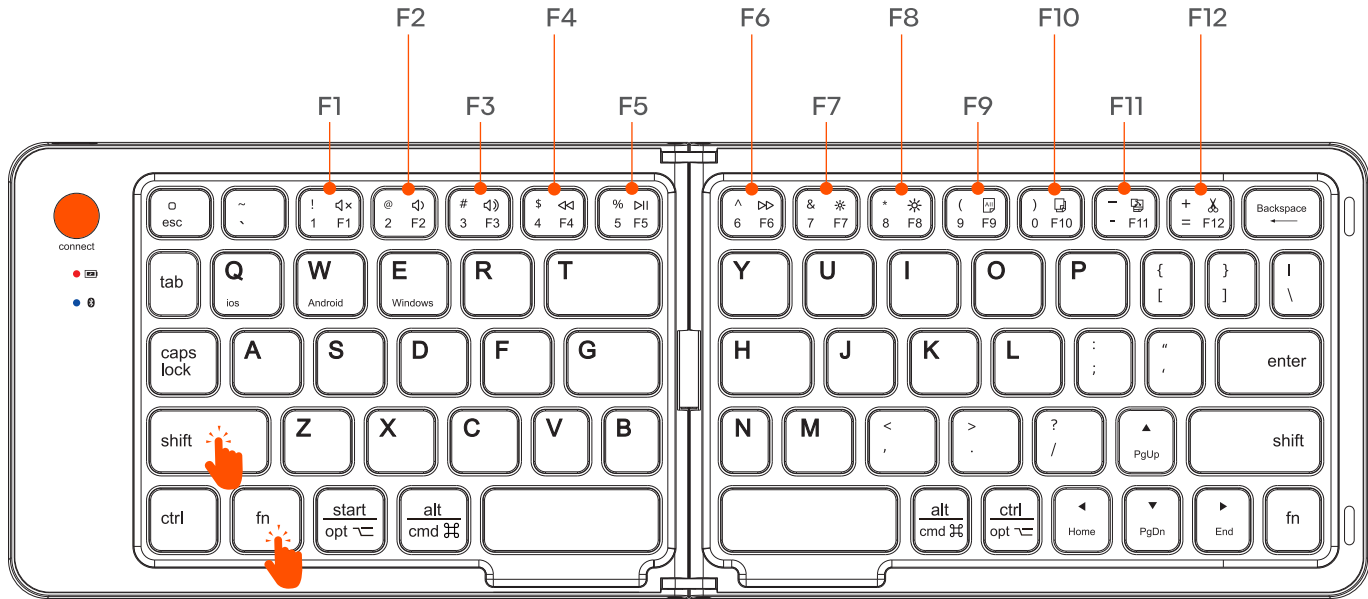
SYSTEM SWITCH:
• iOS: FN+Q • Android: FN+W • Windows: FN+E



The function of shift+ combination keys



The function of fn+shift+ combination keys



CHARGING SPECIFICATION

Type-C charging interface, charging time is about 2 hours. (When there is a stuck condition in use, it means that the battery is too low and needs to be charged). During the charging process, the charging indicator at the wheel is red, and the indicator is off when full.

MOUSE:

| | |
|--------------------|--------------------|
| Operation Mode: | Opto-electronic |
| Type: | Bluetooth Wireless |
| No. of keys: | 3 |
| Interface: | Type-C |
| Key life: | 5 million times |
| Wireless distance: | 10m |
| Gross weight: | 35±2g |
| Product Size: | 70 * 48 * 32mm |
| Resolution: | 1200dpi |

KEYBOARD:

| | |
|------------------------------|---------------------|
| Interface | Type-C |
| Battery | Rechargeable |
| No. of keys | 67 |
| Compatible Systems | Windows/iOS/Android |
| Bluetooth version | Bluetooth 5.1 |
| Working distance | Within 10 meters |
| Lithium battery capacity | 150mAh |
| Charging voltage and current | DC5V 100mA |
| Working voltage | 3.2-4.2V |
| Working current | <3mA |
| Sustainable working time | About 56 hours |
| Sleep time | 10 minutes |
| Wake-up method | Press any key |
| Dimensions | 282*95*8.8mm |
| Weight | 170±5g |

TYPE-C
CHARGING



Indicator light

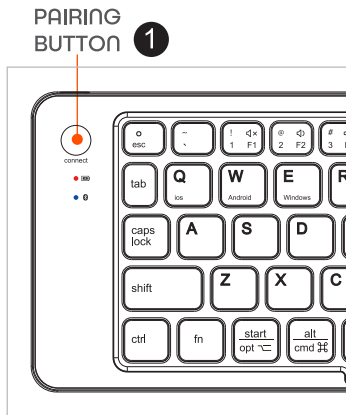


1. Power indicator: Open the left and right key areas of the keyboard. The red light will turn on for 2 seconds and then turn off. The blue light will fast flash to enter pairing mode, and then slow flash in reconnection mode. When the keyboard is folded up, it stops working.
2. Charging indicator: When the USB-C cable is plugged into the charging port of the keyboard, the red light will turn on. Charging takes about 2 hours, and the red light will turn off.
3. Low voltage indicator: When the battery voltage drops below 3.3V, the red indicator light will start flashing with an interval of 0.5 seconds. After flashing 10 times, it will turn off. When a key is pressed, the light will start flashing again.

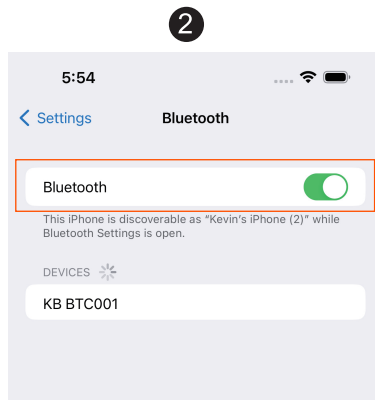


1. Pairing indicator: When you press the pairing button, the blue BT light will blink at 1-second intervals. After a successful pairing, the blue LED will stay on for 2 seconds and then turn off. The maximum time for pairing is 2 minutes. If the keyboard is not successfully paired within this time, it will enter sleep mode.
2. Reconnection indicator: After successful pairing, if you turn off and then turn on the keyboard, the red light will turn on for 2 seconds and then turn off. The blue light will blink to indicate that the keyboard is reconnecting. The keyboard will automatically reconnect, and the blue light will turn off when reconnection is complete. Reconnection time should not exceed 5 seconds. If reconnection is not successful within 30 seconds, the Bluetooth will turn off and enter sleep mode.
3. Caps Lock indicator: The blue light will stay on or turn off to indicate whether Caps Lock is turned on or off. If the keyboard is not used for more than one minute, the blue light will turn off.

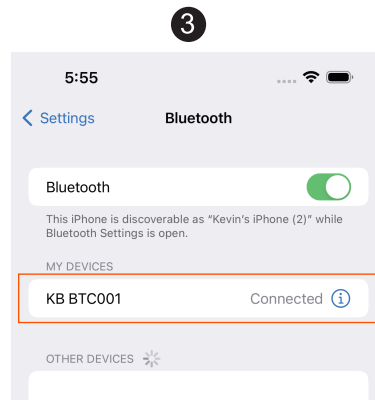
iOS / Android Connection(KEYBOARD)



Opening the folding keyboard will automatically turn on the power. Press the Bluetooth pairing on 3 seconds until the Bluetooth indicator light flashes rapidly.

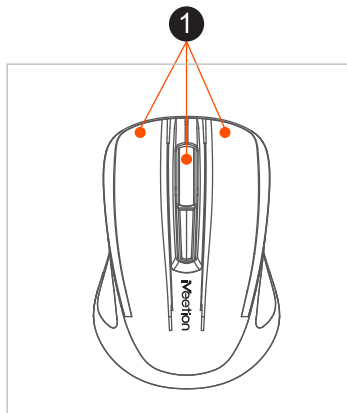


Turn on your phone's Bluetooth, slide the Bluetooth switch on the right icon to turn it green, and the iOS device will enter the search pairing state

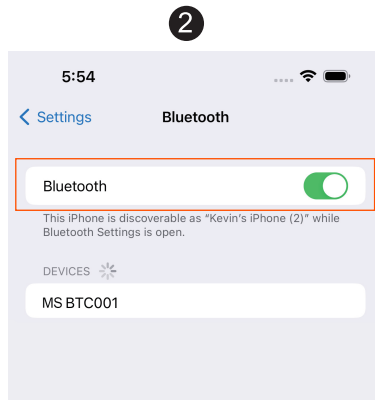


My device list will display connected next to the "Bluetooth keyboard" device Connect, the keyboard status indicator light is off.

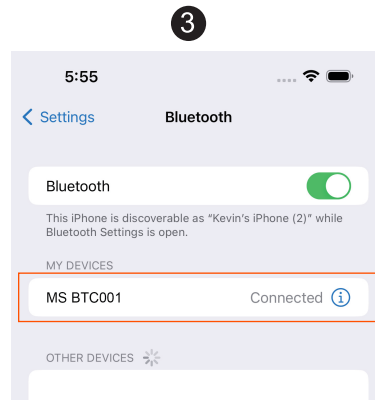
iOS / Andriod Connection(MOUSE)



Simultaneously press three buttons of the mouse until the indicator under the scroll wheel flashes.



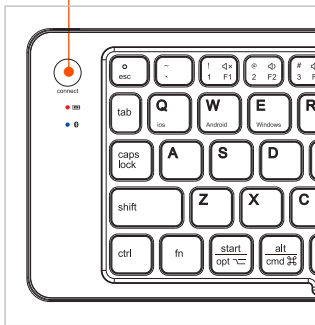
Turn on your phone's Bluetooth, slide the Bluetooth switch on the right icon to turn it green, and the iOS device will enter the search pairing state



My device list will display connected next to the "Bluetooth keyboard" device Connect, the keyboard status indicator light is off.

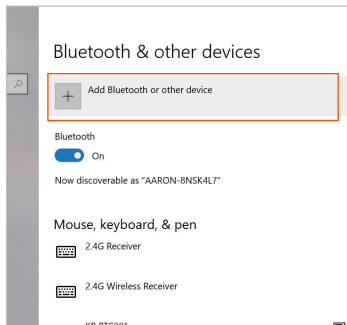
Windows Connection(KEYBOARD)

PAIRING
BUTTON 1



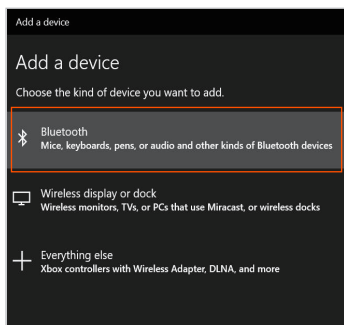
Opening the folding keyboard will automatically turn on the power. Press the Bluetooth pairing on 3 seconds until the Bluetooth indicator light flashes rapidly.

2



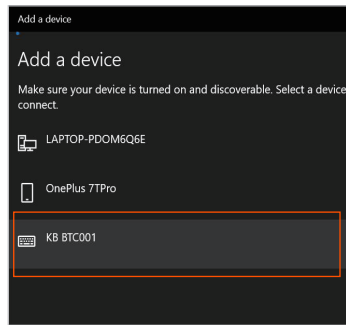
Turn on the computer Bluetooth switch to enter the Bluetooth settings page

3



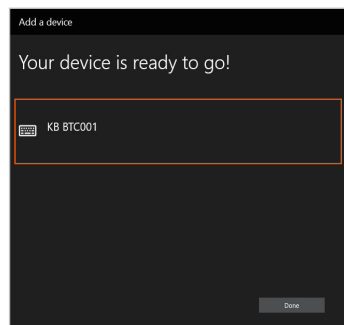
Click to add Bluetooth or other devices, click to add Bluetooth mouse, keyboard, and other devices

4



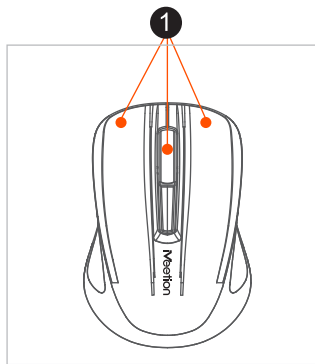
Find the device named KB BTC001 and click on Add Pairing

5

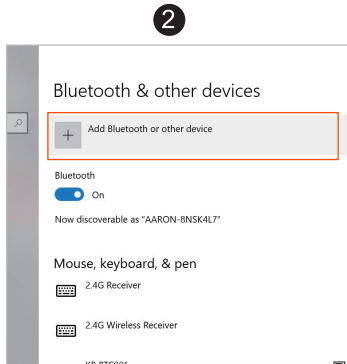


Paired successfully

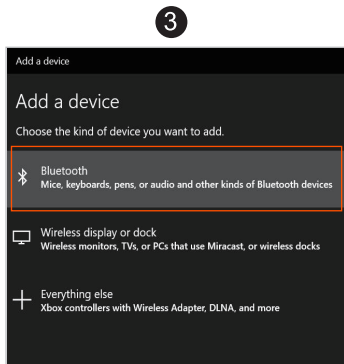
Windows Connection(MOUSE)



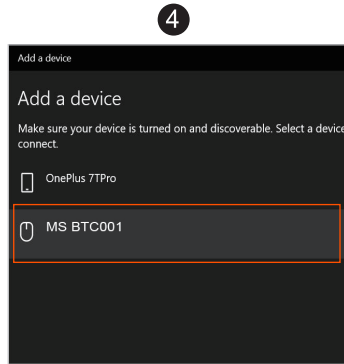
Press the three mouse buttons simultaneously until the light flashes and pairing begins



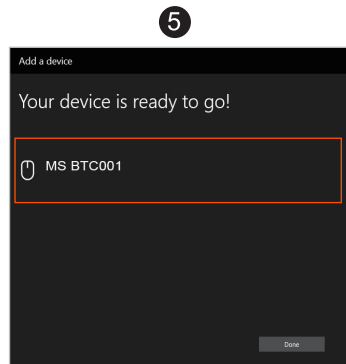
Turn on the computer Bluetooth switch to enter the Bluetooth settings page



Click to add Bluetooth or other devices, click to add Bluetooth mouse, keyboard, and other devices



Find the device named MS BTC001 and click on Add Pairing



Paired successfully

GENERAL

All products under the MEETION brand comply with the US FCC standards with FCC ID: 2A706. The product is made in accordance with RoHS standard.

PRECAUTIONS

1. This product contains a rechargeable lithium battery.
 - (1) Do not dismantle, strike, crush, or put it into a fire.
 - (2) Stop using it immediately if severe swelling occurs.
 - (3) Do not place it in a high-temperature environment.
2. Do not use this device near water.
3. Only use a dry cloth to clean this product.
4. Please follow the manufacturer's instructions for use.
5. If the device is damaged, for example, if liquid enters it, if it gets wet in the rain or becomes damp, or if it cannot operate normally, it must be repaired. For repair matters, it should be entrusted to qualified maintenance personnel.

KIND TIPS

If the product is not in use for a long time, it is recommended to charge it every three months to activate the lithium battery inside the product and prevent battery failure due to long periods of non-use.

WARRANTY CARD

| | | |
|---|----------------------|----------------------|
| Model No. 型号 | | |
| Date of Sale 购买日期 | | |
| Seller 销售商 | | |
| Serial Number 序列号 | | |
| Address of the Seller 销售商地址 | | |
| Phone of the Seller 销售商电话 | | |
| Seller Signature & Stamp 销售商签字盖章 | | Stamp |
| To be Filled in by Service Center 以下由服务中心填写 | | |
| Date of Receipt 收货日期 | Date of Receipt 收货日期 | Date of Receipt 收货日期 |
| Date of Return 返回日期 | Date of Return 返回日期 | Date of Return 返回日期 |
| Special Marks 特殊记录 | Special Marks 特殊记录 | Special Marks 特殊记录 |



TECHNICAL SUPPORT

Having technical problems with this product?

Send an email to service@meetion.com

For more information please visit:

www.meetion.com