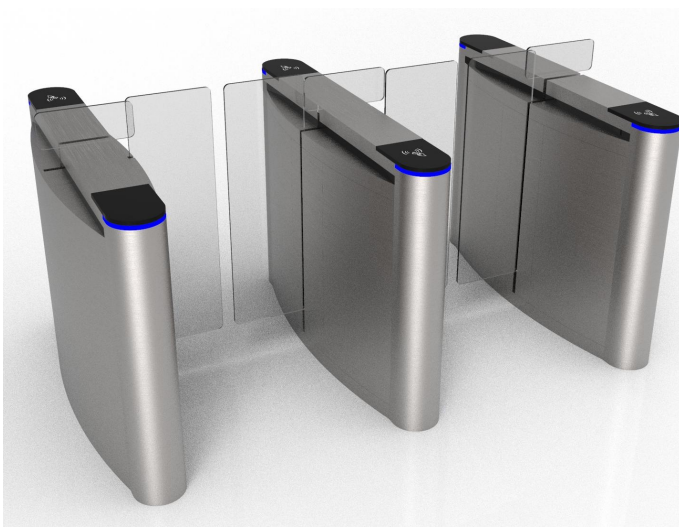


Optical turnstile sliding barrier gate

BLS-SG81



Features

- Auto-lock function – Locks in 30 seconds automatically after opening with no passage (timing adjustable)
- Anti-pinch safety design – Prevents arm jamming or passenger entrapment during sudden power off
- Anti-reverse system – Blocks unauthorized passing through the sliding gates in the reverse direction
- Ultra heavy-duty high speed motor drive and gearbox for strong, stable power output and low-noise operation
- Built-in intelligent PLC controller to support linkage with external authentication devices and custom access logic programming
- Anti-tailgating solutions – Avoids unauthorized passage following authorized passage
- Safety - Equipped series of detectors and anti-collision buffers to prevent closing during a person or object in channels
- Anti-collision brushless motor– Ensures quiet, smooth, long lifetime

Solutions:

- Access control and time attendance system: RFID card/wristband, biometric/face recognition, computer with management software can also control directly
- Ticket system: QR code wristband/ticket, E-QR code
- coin/token collector or RFID card insert, wristband collector
- Exit button(optional)
- Wireless remote control(optional)
- Manual keys(optional)
- Optical sensors

Technical Specifications

Parameters	Specification
Overall Dimensions	Typically 1400mm (L) × 330mm (W) × 1020mm (H); Sliding door width: 280mm + 280mm; Door height: 1200–1800mm (customized for different application scenarios) can be customized
Passage Width	600-900mm (adjustable), 900mm width passage need to be customized, and the cabinet also need to make wider
Material	Cabinet: 304/316 stainless steel, carbon steel powdered coating colors optional
	Flap barrier: Tempered glass/ Acrylic/PC ,standard 250mm+250mm width, wider for 450mm+450mm
Drive	DC brushless motor + transmission gearbox
Passage Speed	0.5-0.8 seconds per person, generally 30-40persons/ min
Working Voltage	AC 110V/ 220V ±10%, 50Hz/60Hz
Power Consumption	Standby: ≤15W; Operating: ≤60W
Interface	Input: Relay signal Output: Dry contact RS232,RS485
Operating Temperature	-20°C to 60°C
Movement Performance	≥5 million cycles; High-end models: ≥7~8 million cycles
Maximum Bearable Current	10A

Customization options:

Dimension & Layout Tailoring: Full-scale customization is available to perfectly match the on-site spatial layout and meet the unique technical requirements of different projects.

Material & Surface Finish Options: Core materials include 304/316 stainless steel (for superior corrosion resistance) and powder-coated carbon steel (with customized colors). Multiple surface

textures are supported: brushed, snowflake, mirror-polished, and matte.

Branding Integration: Logo can be applied to the cabinet or flap panel via engraving or silk-screen printing. In addition, full customization is offered for reader window size, shape, as well as brand slogans to align with corporate identity.

Visual & Functional Accessory Configuration

- LED status indicators: dual-mode design (fixed red cross/green arrow or dynamic flowing light effect)
- Flap panel options: Tempered glass, or acrylic materials; width adjustable within 250–450mm, with optional logo engraving
- Optional adding: audio alarm system and ambient LED lighting (with customized color)
- Portable Version Alternative: An optional model equipped with a powder-coated carbon steel base is provided for convenient relocation between different sites.
 - Custom Service Consultation: For detailed parameters of customization services, please contact us directly
- Inner construction and transmission systems modification for special customized requirements
- Expanding communication interface for interlocks needed like AI cameras etc

Applications:

- Suited for applications requiring ultra high speed access and medium levels of security
- Used extensively in applications such as office receptions, airports, universities, railway stations

Dimensions:

