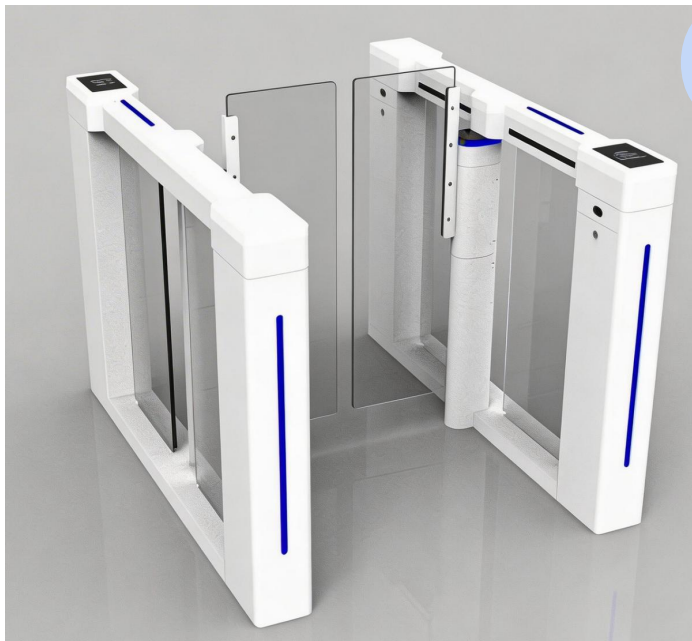


Speed gate fastlane turnstile

BLS-HS328



Features

- **DC Brushless Motor/ Savor motor:** High-efficiency, low-noise, long-life drive; closed-loop speed control
- **Anti-collision motor with Clutch Mechanism:** Auto-unlock when power off or emergency, ensure passengers safety
- **Infrared Sensors:** Multi-point array; anti-pinch/tailgating/pass-back/reverse & passage confirmation;
- **PLC Controller:** Central control core; signal processing/command issuance; integrates with access control/attendance systems.
- **Auto-Lock Reset:** Auto-locks on unauthorized access; resets post-passage; 30s adjustable
- **Startup Self-Diagnosis:** Power-on key part inspection; fault code display; passage blocked on critical faults.
- **Audio-Visual Alert:** Buzzer + warning light for anomalies; customized alert modes.
- **Voice & LED Guidance:** Multi-language voice + LED prompts; guides orderly, safe passage.

Solutions:

- Access control and time attendance system: RFID card/wristband, biometric/face recognition, computer with management software can also control directly
- Ticket system: QR code wristband/ticket, E-QR code
- coin/token collector or RFID card insert, wristband collector
- Exit button(optional)
- Wireless remote control(optional)
- Manual override keys(optional)
- Manual push after power off
- Infrared sensor detector(factory setting optional)
- Any other control system or solutions please confirm with us

Technical Specifications

Parameters	Specification
Material	Frame: 304/316 stainless steel; 316 for coastal areas (superior corrosion resistance), 304 for general indoor/outdoor use, also can use carbon steel powdered coating colors optional
	Swing barriers: 10mm thickness Acrylic, tempered glass, PVC or stainless steel
Dimensions	Main body: 1400mm(length)*150mm(width)*1000mm(height) Swing barriers: 250mm-450mm width, 800mm-1500mm height(customized)
Passage Width	Standard: 600-900mm customized, some special models can be much wider
Speed Performance	40-50 people/min; Barrier opening time: 0.2-0.5s after authorization (much faster than swing turnstiles)
Power Supply	AC 100-240V (universal voltage);
	Control voltage: DC 24V
Motor Parameters	Brushless DC motor; Power: 40-60W; Rotational speed: 3000rpm (stable and low-noise operation)
	Savior motor, Power: 60-100W; Rotational speed: 3000rpm (stable and low-noise operation)
Signal interface	Input: Relay signal Output: Dry contact RS232, RS485
Environmental Resistance	IP54/IP65 rating;
	Operating temp: -25°C to 65°C;

Customization options:

- Dimension & Layout Tailoring: Full-scale customization is available to perfectly match the on-site spatial layout and meet the unique technical requirements of different projects.
- Cabinet Material & Surface Finish Options:

- Cabinet: Core materials include 304/316 stainless steel (for superior corrosion resistance) and powder-coated carbon steel (with customized colors), some special models can use aluminum anodized colors optional.
- Multiple surface textures are supported: brushed, snowflake, mirror-polished, and matte.
- Branding Integration: Logo can be applied to the cabinet or swing barrier via engraving or silk-screen printing. In addition, full customization is offered for access control equipment windows size, shape, as well as brand logo or slogans to align with corporate identity.
- Visual & Functional Accessory Configuration
 - LED status indicators: dual-mode design (fixed red cross/green arrow or dynamic flowing light effect)
 - Swing gates options: tempered glass, acrylic materials or stainless steel; width adjustable within 250-450mm, with optional logo engraving
 - Optional adding: audio alarm system and ambient LED lighting (with customized color)
 - Portable Version Alternative: An optional model equipped with a steel base is provided for convenient relocation between different sites.
 - Any other customized requirements, please contact us directly.

Applications:

- Suited for applications requiring high volume access and medium levels of security
- Used extensively in applications such as commercial buildings lobby, company reception, hospitals, clinics, university, colleges, libraries, airports, railway station, bank, government institutions

Dimensions:

