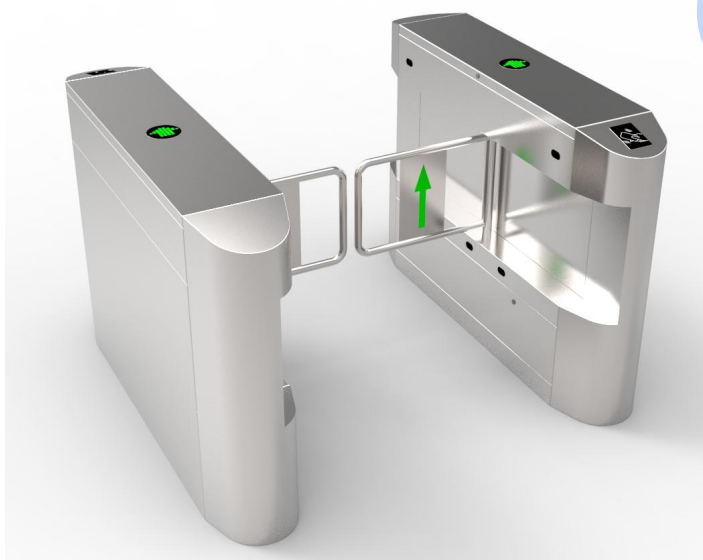


Swing barrier gate turnstile BLS-S301



Features

- **DC Brushless Motor:** High-efficiency, low-noise, long-life drive; closed-loop speed control
- **Clutch Mechanism:** manual push for power-off evacuation, auto-engagement on power recovery.
- **Hall Sensor:** Magnetic position/speed detection; closed-loop control + motor overload protection.
- **Infrared Sensors:** Multi-point array; anti-pinch/tailgating/passback & passage confirmation;
- **PLC Controller:** Central control core; signal processing/command issuance; integrates with access control/attendance systems.
- **Auto-Lock Reset:** Auto-locks on unauthorized access; resets post-passage; 30s adjustable
- **Startup Self-Diagnosis:** Power-on key part inspection; fault code display; passage blocked on critical faults.
- **Audio-Visual Alert:** Buzzer + warning light for anomalies; customized alert modes.
- **Voice & LED Guidance:** Multi-language voice + LED prompts; guides orderly, safe passage.

Solutions:

- Access control and time attendance system: RFID card/wristband, biometric/face recognition, computer with management software can also control directly
- Ticket system: QR code wristband/ticket, E-QR code
- coin/token collector or RFID card insert, wristband collector
- Exit button(optional)
- Wireless remote control(optional)
- Manual override keys(optional)
- Manual push after power off
- Infrared sensor detector(factory setting optional)
- Any other control system or solutions please confirm with us

Technical Specifications

Parameters	Specification
Material	Frame:304stainless steel powder coating colors Carbon steel, 316stainless steel optional
	Swing barriers: 10mm thickness Acrylic, tempered glass, stainless steel
Dimensions	Main body:1200mm(length)*280mm(width)*980mm(height) Swing barriers: 300mm-450mm width
Passage Width	Standard: 600-900mm customized, some special models can be much wider
Speed Performance	25-35 people/min; Barrier opening time: 0.8-1.2s after authorization
Power Supply	AC 100-240V (universal voltage);
	Control voltage: DC 24V
Motor Parameters	Brushless DC motor; Power: 40-60W; Rotational speed: 3000rpm (stable and low-noise operation)
Interface	Input: relay signal; output: dry contact RS232, RS485
Environmental Resistance	IP54/IP65 rating;
	Operating temp: -20℃ to 60℃;

Customization options:

- Custom Design Flexibility
Full customization to turn bespoke concepts into functional swing turnstiles
- Tailored Dimensions & Layout
Custom shapes/sizes for on-site space constraints and project-specific needs
- Premium Material & Finish Options

Body: 304/316 stainless steel/powder-coated steel (custom colors); finishes: brushed, snowflake, mirror, matte

Barriers: Adjustable-width (glass/acrylic/steel) with custom logos, lights & decorations

- Brand-Focused Customization

Logo engraving/silk-screening on cabinets/barriers; custom access control windows for unified branding

- Optional Accessory Upgrades

Dual-mode LED indicators, audio alarms & custom ambient lighting available

- Portable Configuration Option

Optional base for convenient on-site relocation

- Professional Customization Support

Details on Customization Services page; inquiries welcome for specialized demands

Applications:

- Suited for applications requiring high volume access and medium levels of security
- Used extensively in applications such as commercial buildings, scene spots, hospitals, clinics, colleges, libraries, leisure parks and stadiums, retail stores

Dimensions:

