



# J-HT-Series

**Specially designed for industrial areas where ambient temperature even up to 70°**

Advanced thermal management system allows superior heat dissipation ☒



**Wattage  
Selectable**



**CCT  
Selectable**



**IP65**



**IK08**



**6KV**



**3yrs  
Warranty**

**Work Temp:  
up to**

**70°C**



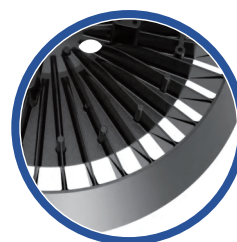
J-High Temp is especially designed for ultra high temperature conditions, up to 70°C



## Philips Driver



The Philips power supply and an isolated power supply design, this light offers improved cooling, perfect for hot environments.



Featuring a robust design,  
a special cooling fin design



## Tempered Glass 120°

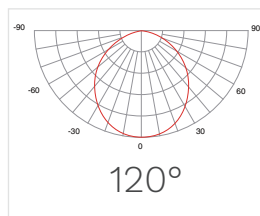
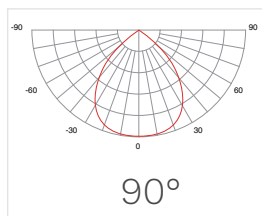
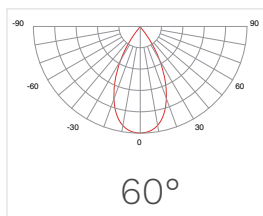
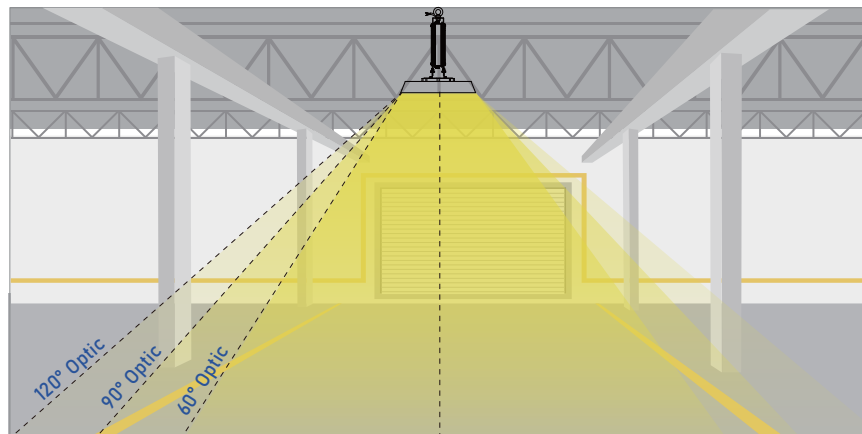
Glass lens over PC ensures your high bay light can withstand intense heat.



---

# Light Distribution

Choose a 120°, 90° or 60° lens are available as accessories.



## APPLICATION



# SPECIFICATIONS TABLE

GENERAL INFORMATION	
Driver included	Yes
CE mark	Yes
RoHS compliant	Yes
Safety features	Open circuit protection Short circuit protection Overvoltage protection
Testing standard	LM-79-19 (all measurements in ISO17025 accredited laboratory)
HOUSING AND FINISH	
Housing	Aluminium
Optic	Polycarbonate
Protector	Polycarbonate (with integrated lenses)
Housing finish	Electrostatic polyester powder coating
Standard colour(s)	RAL 9017 black
OPERATING CONDITIONS	
Operating Temperature Range (Ta)	-20°C to + 70°C
Operating Humidity	10-90%RH
Mounting Option	Loop Hanging
Warranty	3 years
PERFORMANCE	
Power	100W/150W
Efficacy	170lm/W
Power Efficiency	≥93%
Start Time	≤0.2S
Warm-up time to 60%	0.5S

ELECTRICAL INFORMATION	
Electrical Class	Class I EU
Nominal Voltage	120-277V   50/60Hz
Power factor (at fullload)	0.9
Surge Protection Options (KV)	4KV-Line-Line 4KV-Line-Earth
Electromagnetic Compatibility (EMC)	EN 55015:2019/A11:2020, EN 61000 3-2:2019, EN 61000-3-3:2013, EN 61547:2009, EN 62493:2015
Total Harmonic Distortion(THD)	IEC 61000-3-2 Class C <20%
Driver Type	Constant current(CC)
Withstand Voltage	1.5KV 60S 10mA
OPTICAL INFORMATION	
LED Type	SMD2835
Beam Angle	60° / 90° / 120°
Recommended installation height	4m to 12m
Color Tolerance	Ra70 ≤7 Ra80 ≤5
LED colour Temperature	3000K / 4000K / 5000K / 5700K / 6500K
Colour Rendering Index (CRI)	CRI>70 standard CRI>80 optional
Upward Light Output Ratio (ULOR)	0%
LIFETIME OF THE LEDS @ TA 25°C	
All configurations	
L70B50	>50,000h
Switching Cycles	>100,000 times

※Lamp switch must control L line or control L and N lines.  
※Ra measurement tolerance is ±2.



# PERFORMANCE

## STANDARD VERSION

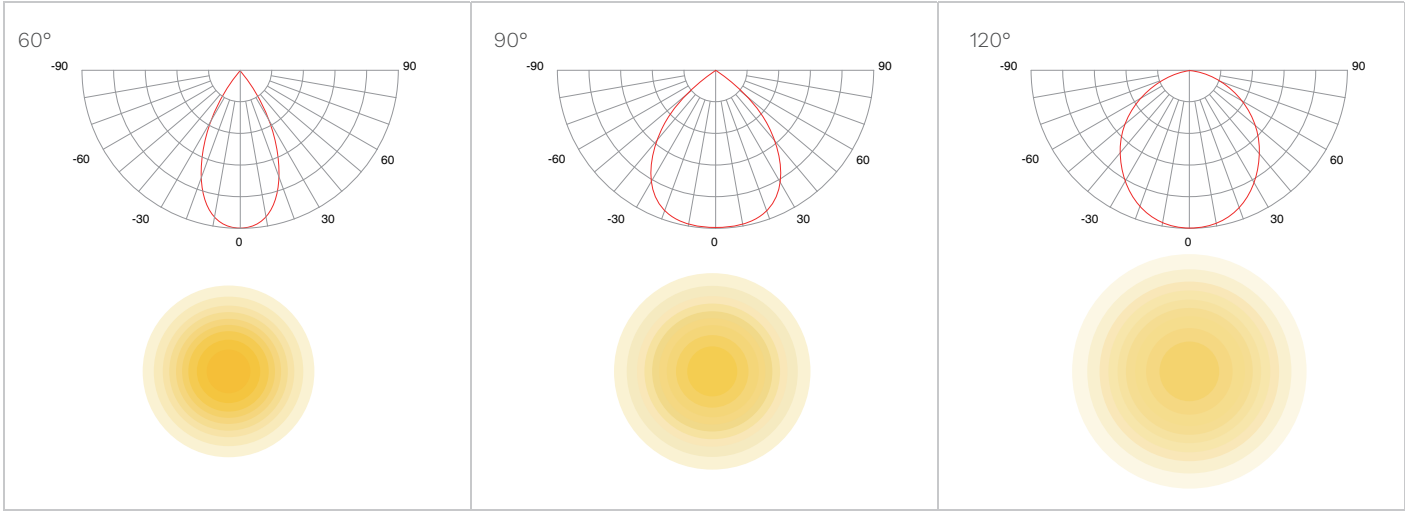
POWER		LUMENS		EFFICACY		
100W			17,000LM		170LM/W(Ra70)	
			16,000LM		160LM/W(Ra80)	
150W			25,500LM		170LM/W(Ra70)	
			24,000LM		160LM/W(Ra80)	
200W			34,000LM		170LM/W(Ra70)	
			32,000LM		160LM/W(Ra80)	

※The Performance Data is tested base on 230VAC, 90° and 4000K for all versions  
※Power Consumption Tolerance ±5% (Apply to all versions)  
※Lumen Efficiency Tolerance ±5% (Apply to all versions)

# PACKAGING

POWER	PACKAGE SIZE	QTY/CTN	SINGLE PIECE VOLUME	NET WEIGHT	GROSS WEIGHT	20GP	40HQ
100W	L435*W352*H180mm	1PCS/CTN	0.0275m3	2.3kg	3.0kg	1018pcs	2473pcs
150W	L463*W409*H180mm	1PCS/CTN	0.0340m3	2.9kg	3.7kg	824pcs	2000pcs

# LIGHT DISTRIBUTIONS



# PENDANT MOUNTING

Power	Size
100W	Φ 310*H368mm
150W	Φ 350*H376mm

