



CAT EYE GEL





C CONTENTS

White Cat Eye Gel Collection

Moonlight Gentle Cat Eye Gel

Pastel Moonlight Ceramics Cat Eye Gel

Dawn Ceramics Cat Eye Gel

Nude Shade Ceramic Cat Eye Gel

Neon Moonlight Cat Eye Gel

Light Color Cat Eye Gel

Bright Ceramics Cat Eye Gel 3.0

Blossom Ceramics Cat Eye Gel

Galaxy Ceramics Cat Eye Gel

Fine Gauze Starlight Cat Eye Gel

Aurora Rainbow Cat Eye Gel

Polar Light Cat Eye Gel

Dreamy Starlight Cat Eye Gel

Crystal Spring Grass Cat Eye

Candy Champagne Cat Eye

Plated Cat Eye Gel

Neon Plated Cat Eye Gel 3.0

Glow In Dark Cat Eye Gel

Colorful Crystal Cat Eye Gel

Soda Crystal Cat Eye Gel

Sapphire Cat Eye Gel

Magnetic Flashing Gel

Smoothie 9d Cat Eye Gel-Carnival Holiday Collection

Laser Rainbow Cat Eye Gel

3 In 1 Platinum Cat Eye Gel

Rainbow Platinum Cat Eye Gel

Amber Moonlight Cat Eye Gel

Ruby Ceramics Cat Eye

Wine Red Cat Eye Gel 4.0

Aurora Starlit Cat Eye Gel

Aurora Polaris Cat Eye Gel

9d Cat Eye Gel

Disco Flashing Cat Eye Gel

Dazzling 9d Cat Eye Gel 2.0

Christmas Red & Green Cat Eye Gel

Glaring Color Cat Eye Gel

FOLLOW US

MORE INFO ABOUT BOZLIN NAIL BEAUTY



bozlin nail gel supplies



bozlin_nailfactory



bozlin nails factory

Website: www.bozlingel.com

Guangdong Baizhilin New Material Technology Co., Ltd.





High Quality

EU/USA Standard Formula
(Hema free/TPO free/DI-hema free)

3000+

Colors

Full Color Chart for You
(Base&Top Coat/Gel Builder/Poly Gel/
Color Gel/Glitter Gel/
Cat Eye/Nail Art Gel/Painting Gel/Function Gel)



Free Sample

1-6pcs(7.3ml) for Free
Free Custom Design Label/Box & Banner & Picture
for(according to your final order)

OEM & ODM

Customize Your Own Brand



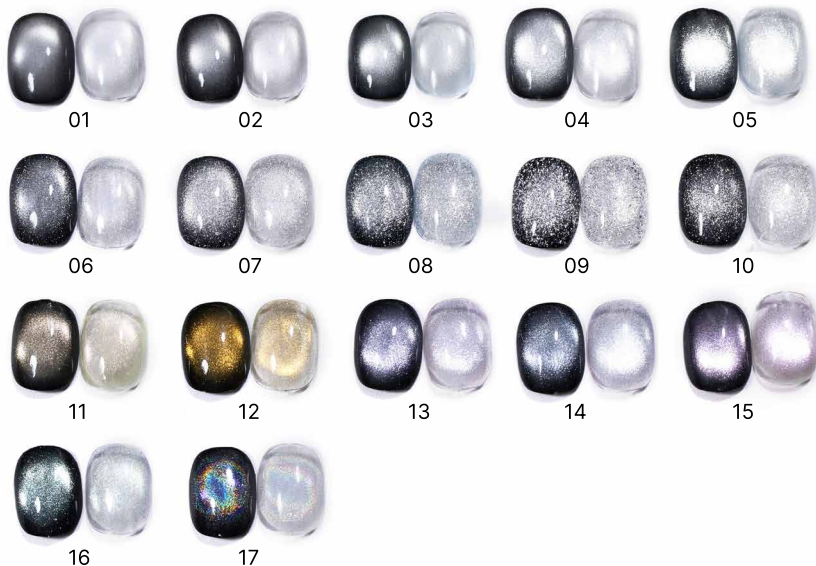
5200/5200-2/E520

HIGH-DENSITY WHITE CAT EYE GEL

17 COLORS COLLECTION

Features:

1. Good product for mix and match
2. Contains different size of magnetic powder





Features:

1. Ultra delicate magnetic gel. The particle size is 4 m.
2. Colors are nude and light, suitable for spring and summer.

5200/5200-2/E520

MOONLIGHT GENTLE

CAT EYE GEL





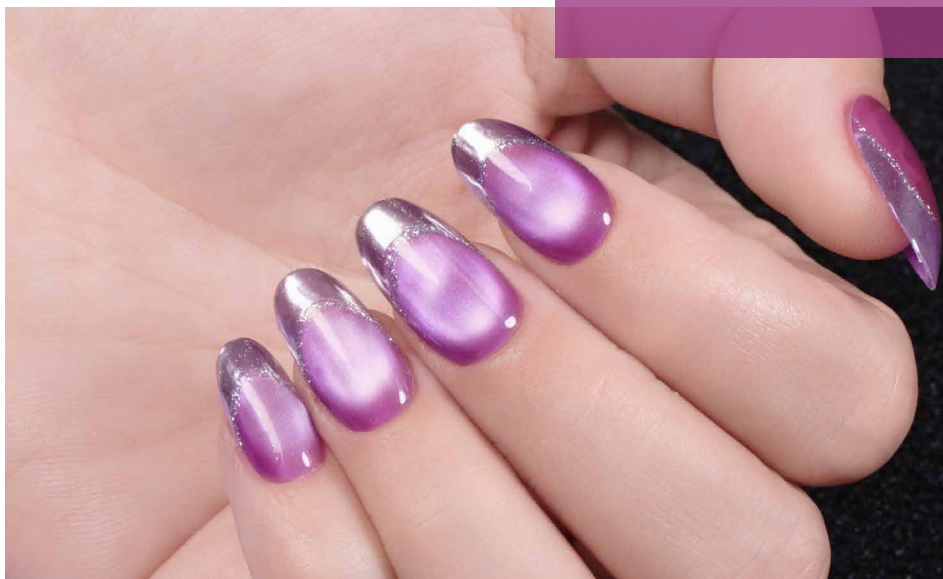
Features:

1. Ultra delicate magnetic gel. The particle size is $4\mu\text{m}$.
2. Sweet and bright colors for summer.

PASTEL MOONLIGHT

CERAMICS CAT EYE GEL

5200/5200-2/E520



5200/5200-2/E520

DAWN

CERAMICS CAT EYE GEL

Features:

1. Ultra delicate magnetic gel. The particle size is $4\mu\text{m}$.
2. Cat eye color is light golden.





Features:

1. Delicate magnetic powder. The particle size is 5 μ m.
2. Nude color is suitable for all seasons.

NUDE SHADE

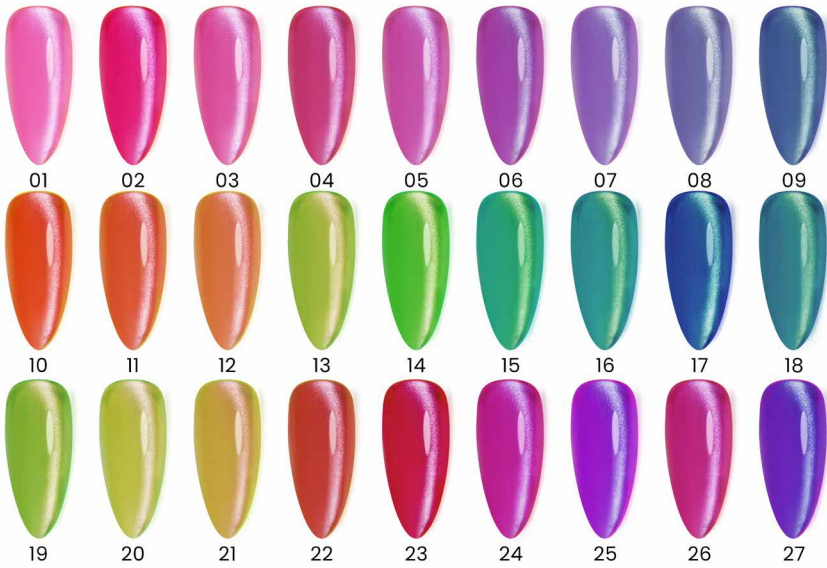
CERAMICS CAT EYE GEL





Features:

1. Delicate magnetic powder.The particle size is 5μm.
2. Neon color is suitable for summer.



5200/5200-2/E520

NEON MOONLIGHT

CAT EYE GEL



Features:

1. Delicate magnetic powder.
2. The base color is pastel style, suitable for spring and summer.



5200/5200-2/E520

**LIGHT
COLOR**
CAT EYE GEL





Features:

1. Delicate magnetic powder.
2. The base color is nude and light. It's clearer than nude shade ceramic cat eye gel.

BRIGHT CERAMICS

CAT EYE GEL 3.0

5200/5200-2/E520





Features:

1. Delicate magnetic powder.
2. The base color is nude and light. It's clearer than nude shade ceramic cat eye gel.



5200/5200-2/E520

BLOSSOM CERAMICS

CAT EYE GEL





Features:

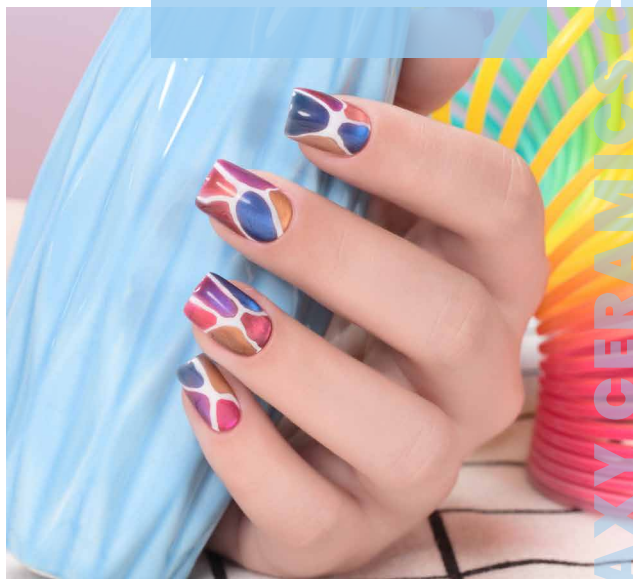
1. Delicate magnetic powder.
2. The cat eye is dual color variation and angle shifting.



5200/5200-2/E520

GALAXY CERAMICS

CAT EYE GEL





Features:

1. Magnetic powder is a little bigger than ceramic cat eye gel.
2. The cat eye light is dual color variation and angle shifting.

5300-10

FINE GAUZE STARLIGHT

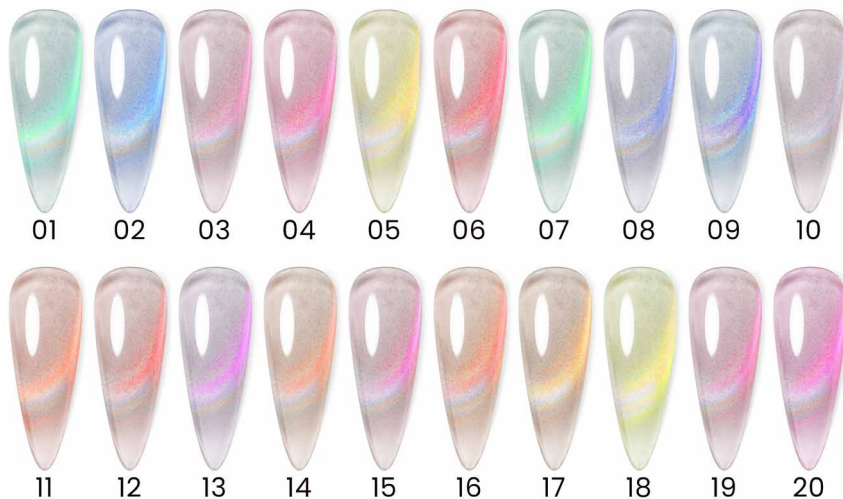
CAT EYE GELT





Features:

1. Magnetic powder is a little bigger than ceramic cat eye gel.
2. The cat eye light is white and rainbow. In different angle, you will see different cat eye color.



5200/5200-2/E520

AURORA RAINBOW

CAT EYE GELT





Features:

1. Magnetic powder is a litter bigger than ceramic cat eye gel.
2. The cat eye light is bright color and shining.
3. Need to use strong magnet and magnetize the gel a few more times.

5200/5200-2/E520

POLAR LIGHT
CAT EYE GEL



01



02



03



04



05



06



07



08





Features:

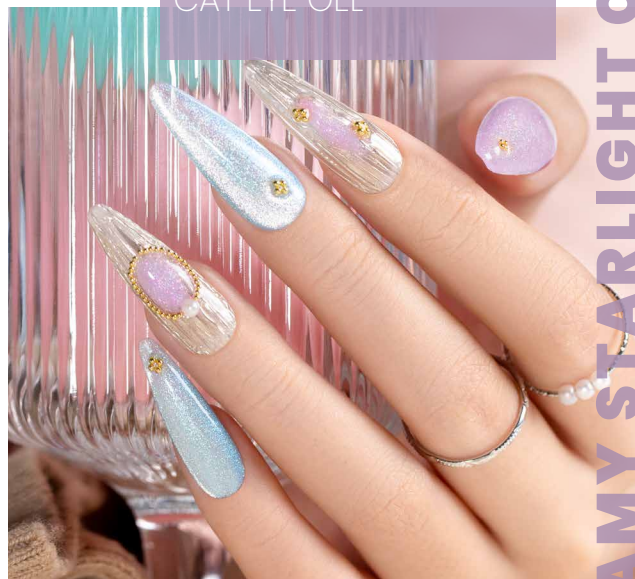
1. Magnetic powder is a little bigger than ceramic cat eye gel.
2. Base color with polarized glitter.
3. Cat eye light is white.



5200/5200-2/E520/E520

DREAMY STARLIGHT

CAT EYE GEL





Features:

1. Magnetic powder is a little bigger, which is more shining.
2. Base color and cat eye light are pastel.



5200/5200-2/E520

CRYSTAL SPRING GRASS

CAT EYE GEL





Features:

1. Magnetic powder is a little bigger, which is more shining.
2. Base color is vibrant, suitable for spring and summer.
3. Cat eye light is light golden.



5200/5200-2/E520

**CANDY
CHAMPAGNE**
CAT EYE GEL



5200/5200-2/E520



Features:

1. Magnetic powder is a little bigger, but also delicate and brighter.
2. There are various color and you can pick four season universal colors.

PLATED CAT EYE GEL





Features:

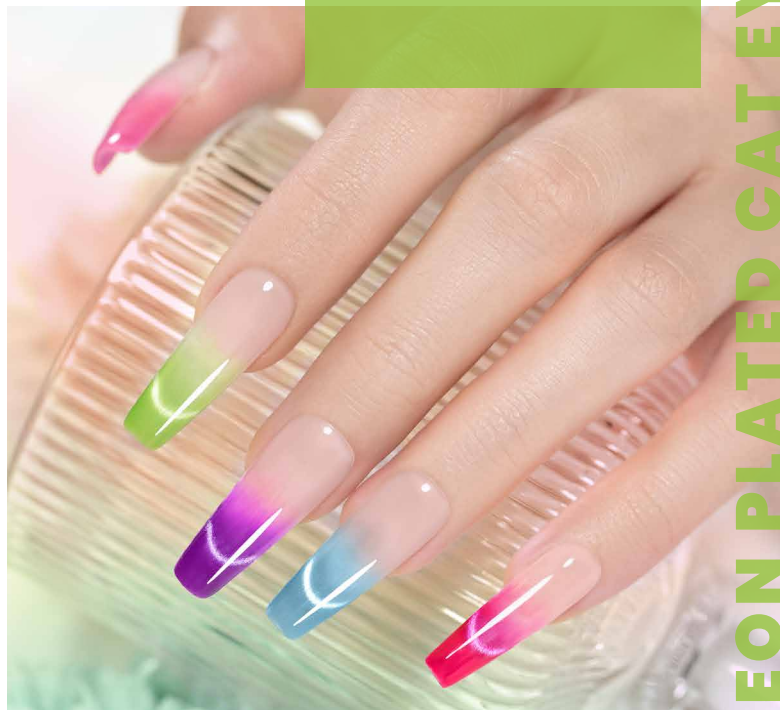
Features:

1. Magnetic powder is a little bigger, but also delicate and brighter.
2. Neon color and shining cat eye make it more sparkly.
3. It's suitable for summer.



5200/5200-2/E520

NEON PLATED
CAT EYE GEL 3.0



5200/5200-2/E520

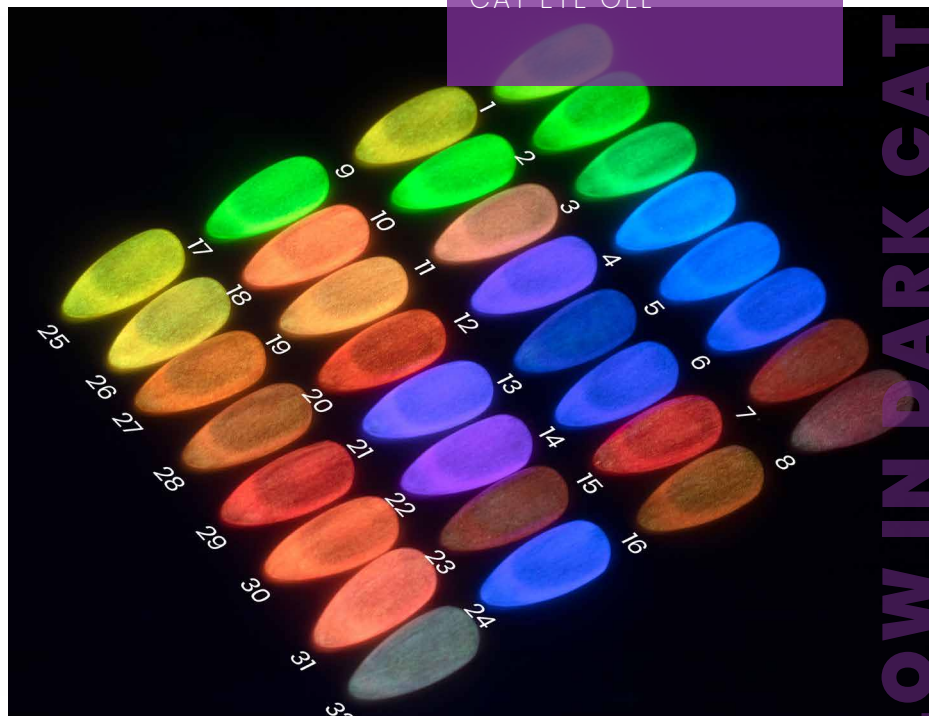


Features:

1. The same magnetic powder and colors as neon plated cat eye gel 3.0.
2. It's glow in dark effect.

GLOW IN DARK

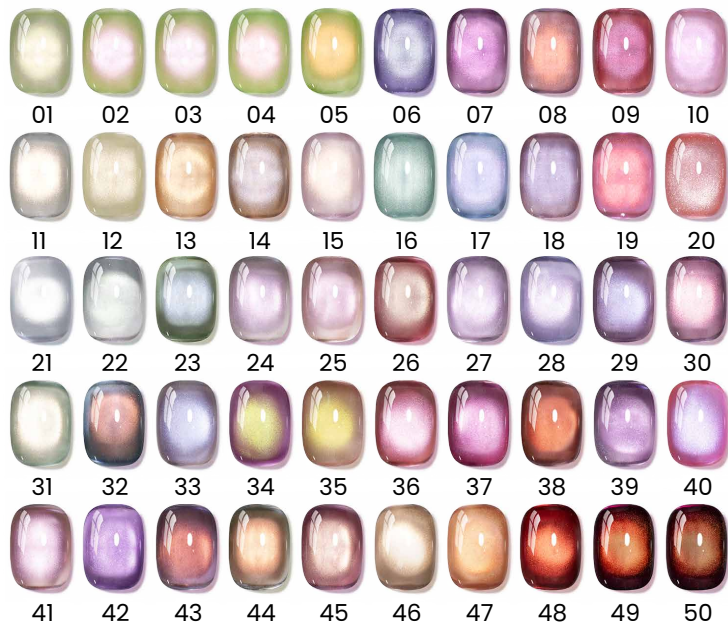
CAT EYE GEL





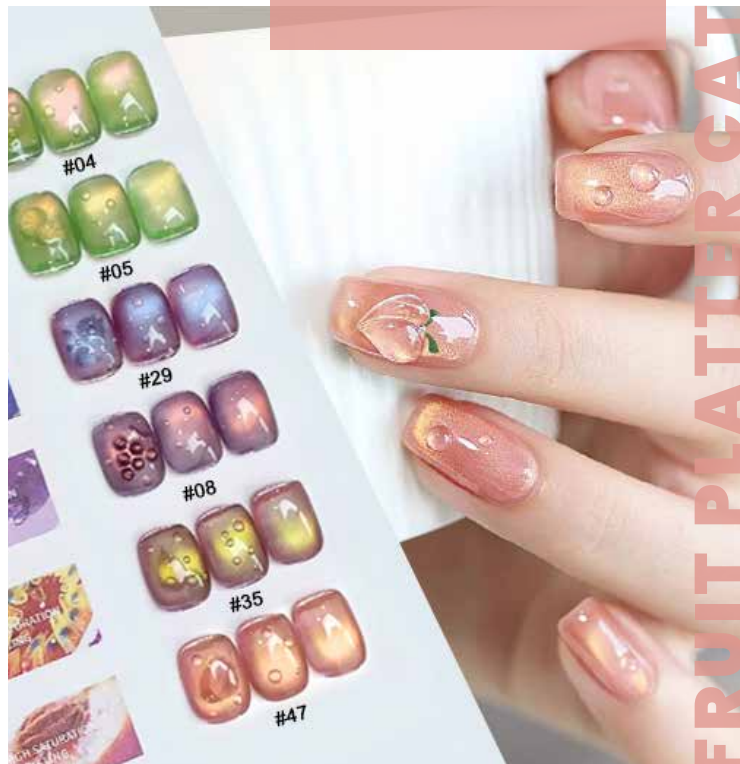
Features:

1. Rich in color and glossy like fruit
2. Some cat eye light are single color, some are dual-tone effect
3. Easy to magnetize



5200/5200-2/E520

FRUIT PLATTER CAT EYE GEL



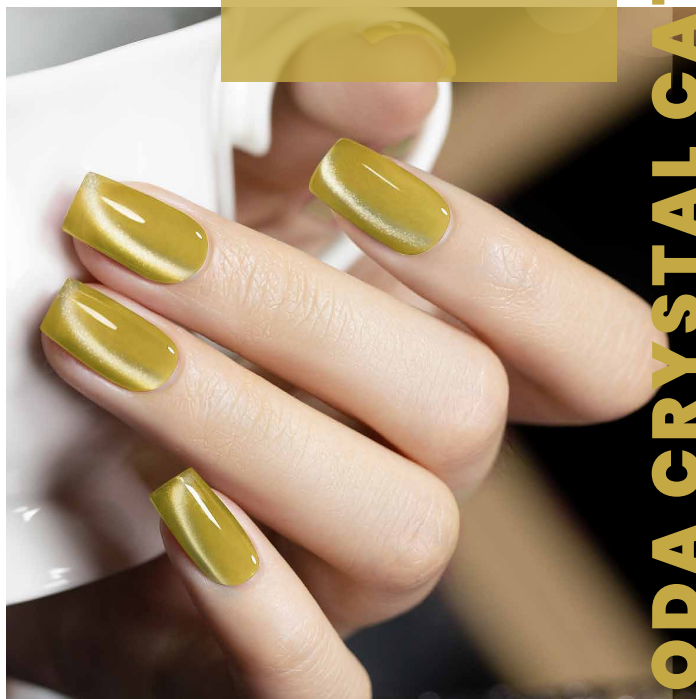


Features:

1. Magnetic powder is rough texture and highly bright. The particle size is 38 μm .
2. It's candy colored, suitable for spring and summer.

5200/5200-2/E520

SODA CRYSTAL CAT EYE GEL





Features:

1. Magnetic powder is a litter bigger than ceramic cat eye gel.
2. The cat eye light is bright color and shining.
3. Need to use strong magnet and magnetize the gel a few more times.



01 02 03 04 05 06 07 08 09 10 11 12



01 02 03 04 05 06 07 08 09 10 11 12

5200/5200-2/E520

SAPPHIRE
CAT EYE GEL



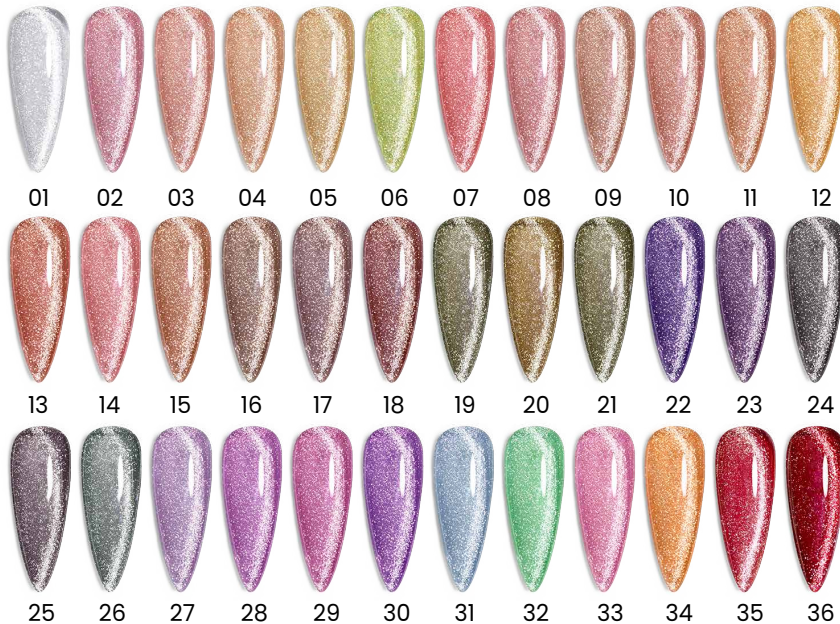
5200/5200-2/E520



Features:

1. Magnetic powder is bigger than smoothie 9D cat eye gel.
2. Cat eye is shining like diamond.
3. Base color is semi-transparent and suitable for spring and summer.

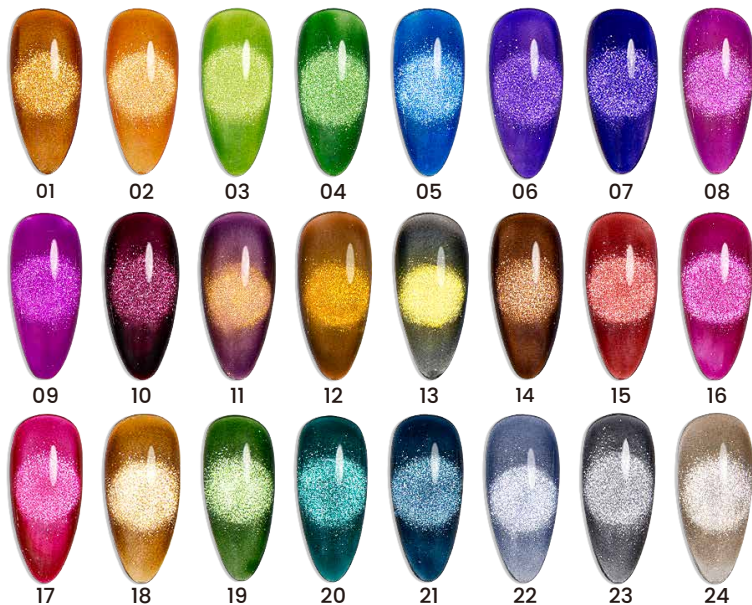
MAGNETIC FLASHING GEL





Features:

1. Magnetic powder is rough texture and highly bright.
The particle size is 38 μm .
2. It's inspired by Halloween's represents color, like orange, purple, magenta, royal blue, etc.



5200/5200-2/E520

SMOOTHIE 9D CAT EYE GEL

-CARNIVAL HOLIDAY
COLLECTION



5200/5200-2/E520



Features:

1. Magnetic powder is a little bigger than ceramic cat eye gel.
2. The cat eye light is bright color and shining.
3. Need to use strong magnet and magnetize the gel a few more times.

LASER RAINBOW CAT EYE GEL





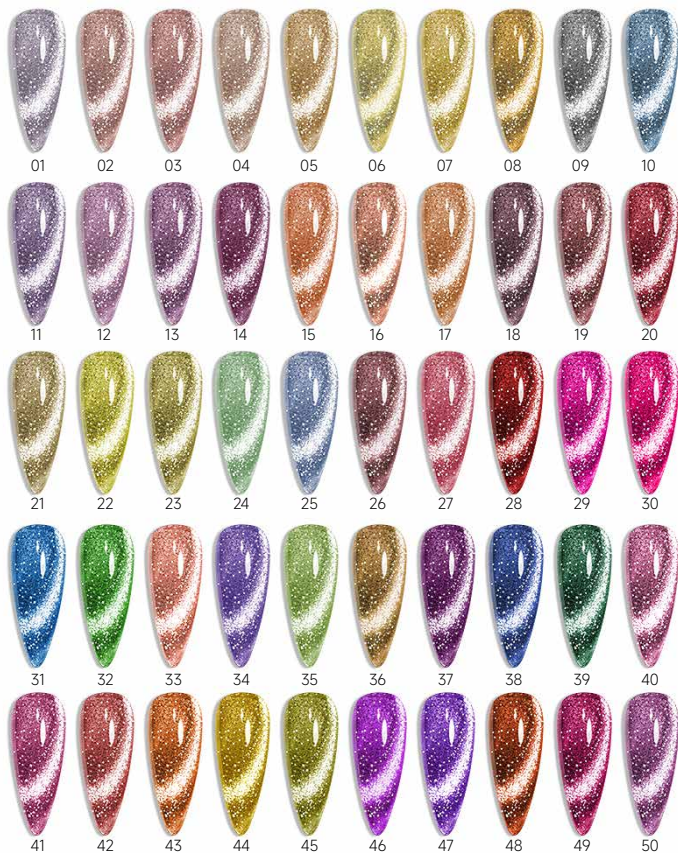
Features:

1. Magnetic powder is the biggest like platinum.
2. The magnetic powder is high-density, so it can be just full coverage or painting.
3. It's suitable for summer.

5200/5200-2/E520

3 IN 1 PLATINUM

CAT EYE GEL



5200/5200-2/E520



Features:

1. Magnetic powder is the biggest like platinum.
2. Adds laser glitter, which makes the gel more shining and colorful.

RAINBOW PLATINUM

CAT EYE GEL





Features:

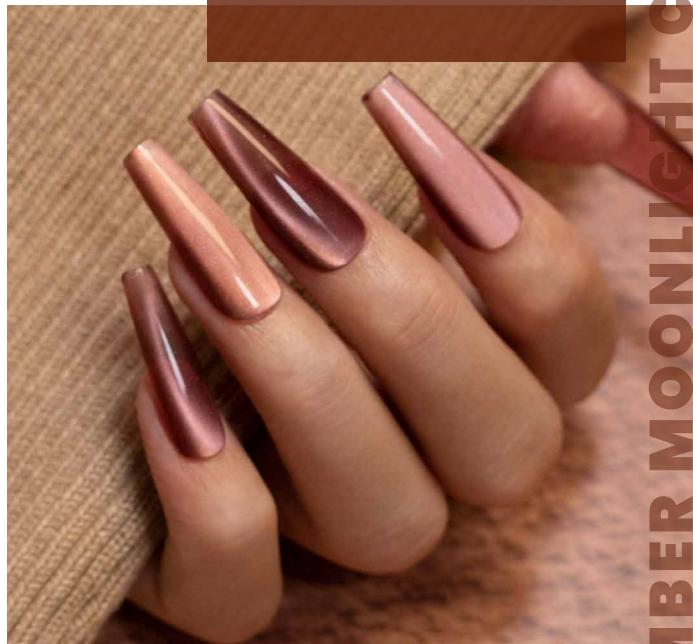
1. The most delicate magnetic gel. The particle size is 4μm.
2. It's white cat eye and the base is amber color scheme.
3. It's suitable for autumn.



5200/5200-2/E520

AMBER MOONLIGHT

CAT EYE GEL





Features:

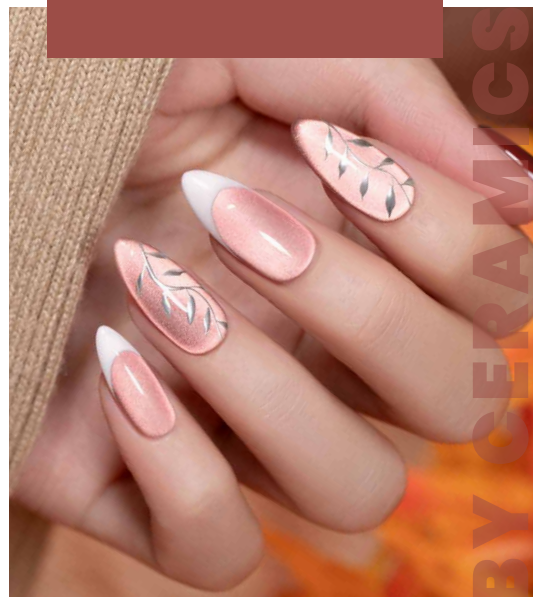
1. Delicate magnetic powder. The particle size is $5\mu\text{m}$.
2. The colors are inspired by gemstone, mainly higher saturation red, green, blue, purple and gold.
3. It's suitable for winter.



5200/5200-2/E520

RUBY CERAMICS

CAT EYE





Features:

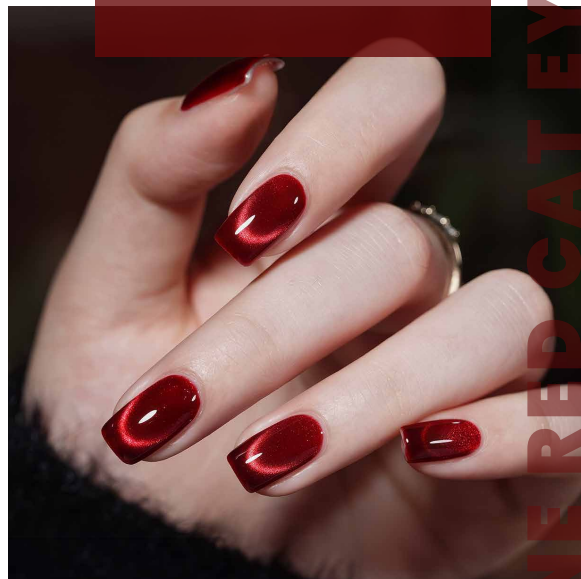
1. Magnetic powder is a litter bigger than ceramic cat eye gel.
2. The base color and cat eye light are mainly red and magenta, some are two tone cat eyes.
3. It's suitable for all seasons and scene, especially for winter and Christmas.



5200/5200-2/E520

WINE RED

CAT EYE GEL 4.0



Features:

1. Magnetic powder is a litter bigger than ceramic cat eye gel.
2. The base color and cat eye light are both colorful like chameleon.
3. This cat eye gel is stunning and special.

5200/5200-2/E520

AURORA STARLIT CAT EYE GEL



01 02 03 04 05 06



01 02 03 04 05 06



07 08 09 10 11 12



07 08 09 10 11 12



01 02 03 04 05 06
07 08 09 10 11 12



Features:

1. Magnetic powder is a litter bigger than ceramic cat eye gel.
2. The base color is polarized and pearl shimmering.
3. Cat eye light is colorful.
4. It's suitable for autumn, winter and festival scene.



01 02 03 04 05 06 07 08 09 10 11 12



01 02 03 04 05 06 07 08 09 10 11 12

5200/5200-2/E520

AURORA POLARIS

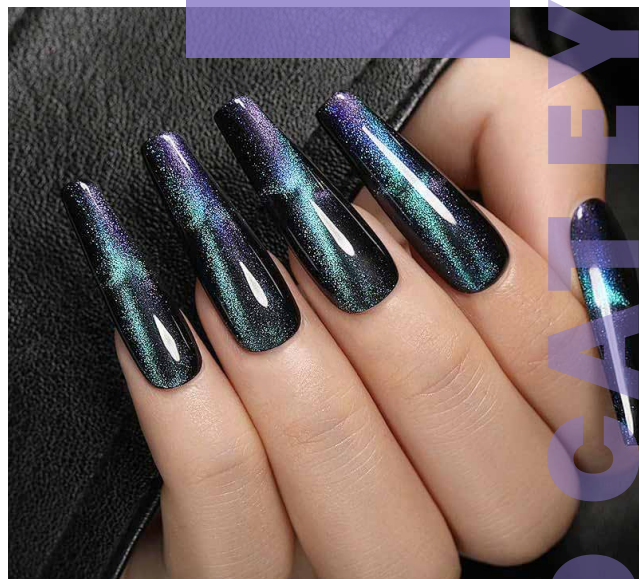
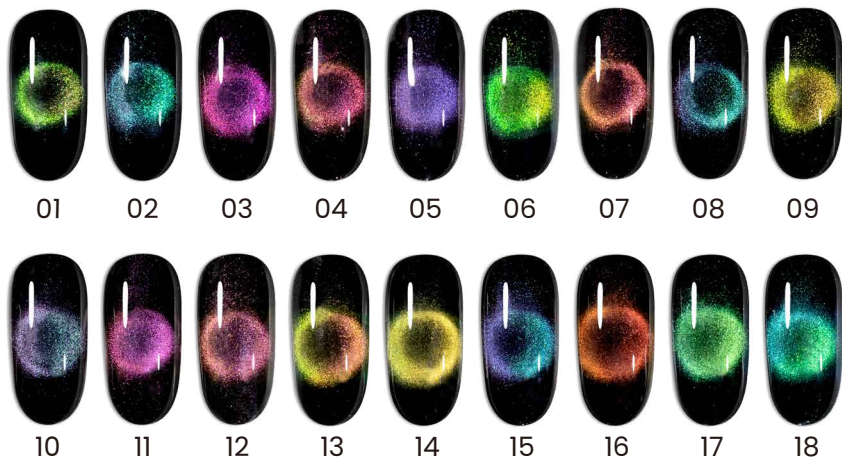
CAT EYE GEL





Features:

1. Magnetic powder is rough texture.
2. The base color is transparent, cat eye light is color changing.
3. It would be the best effect if match with black color.



5200/5200-2/E520

9D

CAT EYE GEL

5200/5200-2/E520



Features:

1. Magnetic powder is rough texture.
2. The base color is transparent and adds reflective glitter, cat eye light is color changing.
3. It would be the best effect if match with black color.



Clear base



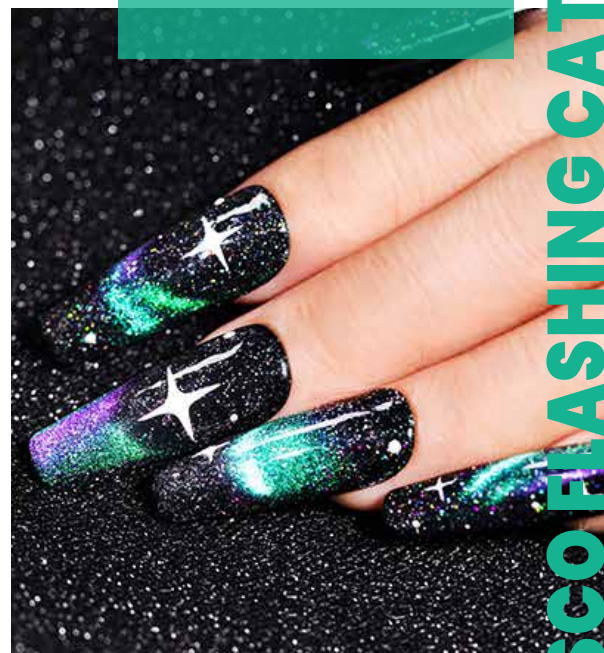
Black Base



Black Base with Style 2

DISCO FLASHING

CAT EYE GEL





Features:

1. Magnetic powder is rough texture.
2. The base color is chameleon effect and dazzling.
3. Cat eye light is two tone.



5200/5200-2/E520

DAZZLING 9D

CAT EYE GEL 2.0





Features:

1. Magnetic powder is a litter bigger than ceramic cat eye gel.
2. The cat eye light is bright color and shining.
3. Need to use strong magnet and magnetize the gel a few more times.



01



02



03



04



05



06



07



08

5200/5200-2/E520

CHRISTMAS RED & GREEN CAT EYE GEL

