



Whether you're working with artificial nails, rhinestones, or other embellishments, this product ensures a seamless, durable finish every time.

FOLLOW US

MORE INFO ABOUT BOZLIN NAIL BEAUTY



bozlin nail gel supplies



bozlin_nailfactory



bozlin nails factory

Website: www.bozlingel.com

Guangdong Baizhilin New Material Technology Co., Ltd.





HQ

High Quality

EU/USA Standard Formula
(Hema free/TPO free/Di-hema free)

3000+

Colors

Full Color Chart for You
(Base&Top Coat/Gel Builder/Poly Gel/
Color Gel/Glitter Gel/
Cat Eye/Nail Art Gel/Painting Gel/Function Gel)



Free Sample

1-6pcs(7.3ml) for Free
Free Custom Design Label/Box & Banner & Picture
for (according to your final order)

OEM & ODM

Customize Your Own Brand

Base gel

Our base gel creates a robust bond between the color and the nail, effectively guarding against staining and chipping. It enhances the longevity of your manicures and pedicures, delivering a more enduring and flawless experience.

Strong Adhesion

Smooth Application

Anti-lifting

Fiber base gel

Peel off base gel

4 in 1 base coat

Hema free TPO free base gel

Acid free strengthening base gel

Rubber base gel

HEMA free TPO free ace gel

Attribute

Texture: A little thin
Mobility: A little quick
Curing heat: Zero
Hardness: High
Adhesion: Great
Soak off: Yes

Fiber Base Gel

2100X

Function

repair nails, reinforce weak nails

Features

1. Rich fiber repair cracked
2. Interwoven fibers provide strong support for soft nails
3. High adhesion





Peel Off Base Gel

1200

Function

for manicure practice or quickly change nail art

Features

1. Peel off nail art completely
2. Quickly change nail art and no harm for nails

Attribute

Texture: Medium
Mobility: Medium
Curing heat: Zero
Flexibility: Good
Soak off: Peel off directly



Attribute

Texture: Thin
Mobility: Quick
Curing heat: Zero
Flexibility: Great
Adhesion: Great
Soak off: Yes



4 in 1 Base Coat

2100-1

Function

1. Gel base, foundation
2. Nail tip gel
3. Rhinestone gel
4. Reinforcing gel

Features

Strong adhesion





Attribute

Texture: Medium
Mobility: Medium
Curing heat: Zero
Flexibility: Great
Adhesion: Great
Soak off: Yes



Hema Free TPO Free Base Gel

E101

Function

gel base, foundation

Features

1. Hema free, TPO free
2. Good adhesion and long lasting

Attribute

Texture: A little thick
Mobility: Slower
Curing heat: Zero
Flexibility: Good
Adhesion: Great
Soak off: Yes



Acid Free Strengthening Base Gel

2120

Function

gel base, foundation

Features

1. Acid free and harmless for natural nails
2. Protect weak nails
3. Long lasting and not easy to fall off





Attribute

Texture: Thick
Mobility: Slow
Curing heat: Low
Flexibility: Great
Adhesion: Great
Soak off: Yes



Rubber Base Gel

2052

Function

gel base, foundation

Features

1. Higher adhesion
2. Higher flexibility

Attribute

Texture: Thick

Mobility: Slow

Curing heat: It will be low if use handheld uv lamp and cure a few second firstly

Hardness: High

Adhesion: Great

Soak off: No



HEMA free TPO Free Ace Gel

E102

Function

1. Rubber base
2. Fast builder liquid
3. Construction gel
4. Reinforcing gel
5. Repair nail

Features

1. Hema free, TPO free
2. High adhesion and durability



Top Coat

Our top gel protects the gel polish color from chippingfading, adds shine and maintains a long-lastingbright color.

High-gloss

Long-lasting

Scratch- resistant

2 in 1 rubber base & top

colored 2 in 1 rubber base & top

non blue no wipe top coat

no wipe top coat

Hema free TPO free glass top coat

super shiny top coat

amethyst top coat

amethyst sculpting top coat

sculpting top coat

HEMA free TPO free matte top coat

non stick powder matte top coat

Attribute

Texture: a little thick
Mobility: a little slow
Curing heat: zero
Flexibility: very good
Adhesion: great
Soak off: yes



2 In 1 Rubber Base & Top

W5020

Function

1. Rubber base
2. No wipe rubber top

Features

1. Good adhesion as base gel
2. High flexibility, can quick rebound
3. Scratches on the nail surface can be self repaired





Attribute

Texture: a little thick

Mobility: a little slow

Curing heat: zero

Flexibility: very good

Adhesion: great

Soak off: yes



Colored 2 In 1 Rubber Base & Top

W5020b

Function

1. Rubber base
2. Milky color gel
3. No wipe rubber top

Features

1. Good adhesion as base gel
2. High flexibility, can quick rebound
3. Scratches on the nail surface can be self repaired
4. Comes with color

Attribute

Texture: medium

Mobility: good

Curing heat: low

Surface: no sticky layer

Brightness: high

Transparency: slight yellowing

Hardness: medium



Non Blue No Wipe Top Coat

3200-3

Function

1. Keep gel color long lasting
2. Scratch resistant

Features

1. No fluorescent agent
2. No wipe
3. Long lasting





Attribute

Texture: thinner

Mobility: quicker

Curing heat: low

Surface: smooth

Brightness: higher

Transparency: better than non blue one

Hardness: medium



No Wipe Top Coat

3210L

Function

1. Keep gel color long lasting
2. Scratch resistant
3. Chrome base

Features

1. No wipe
2. Bright and Long lasting

Attribute

Texture: thin
Mobility: quick
Curing heat: low
Surface: smooth
Brightness: higher
Transparency: slight yellowing
Hardness: medium

Hema Free TPO Free Glass Top Coat

E300

Function

1. Keep gel color long lasting
2. Scratch resistant
3. Chrome base

Features

1. HEMA free, TPO free
2. No wipe
3. Bright and smooth
4. Long lasting



Super Shiny Top Coat

3200-2B

Function

1. Keep gel color long lasting
2. Scratch resistant

Features

1. Higher brightness than no wipe top coat
2. Higher hardness for better scratch resistance
3. Keep nail art lasting longer

Attribute

Texture: medium

Mobility: medium

Curing heat: low

Surface: smooth

Brightness: very high

Transparency: slight yellowing

Hardness: higher





Attribute

Texture: thin
Mobility: quick
Curing heat: low
Surface: smooth
Brightness: high
Transparency: non yellowing
Hardness: higher



Amethyst Top Coat

3230P

Function

1. Keep gel color long lasting
2. Scratch resistant
3. Prevent color from turning yellow



Mirror-Like Shine
Scratch-Resistant



Non-Yellowing
Protection 30 Days+

Features

1. Light purple color
2. Correct the yellowing of the top coat
3. Very smooth like crystal



Attribute

Texture: thick
Mobility: slow
Leveling: good
Curing heat: low
Surface: very smooth
Brightness: high
Transparency: non yellowing
Hardness: higher



Amethyst Sculpting Top Coat

3208-2P

Function

1. Post constructing
2. Keep gel color long lasting
3. Scratch resistant
4. Prevent color from turning yellow

Features

1. Light purple color
2. Correct the yellowing of the top coat
3. Strengthen the leveling of the nail surface
4. Very smooth like crystal

Attribute

Texture: thick
Mobility: slow
Leveling: good
Curing heat: low
Surface: smooth
Brightness: high
Transparency: non yellowing
Hardness: high



Sculpting Top Coat

3208-1

Function

1. Post constructing
2. Keep gel color long lasting
3. Scratch resistant

Features

1. High transparency
2. Strengthen the leveling of the nail surface
3. Very smooth like crystal



Flat Nail Surface



Constructing Nail Surface





Attribute

Texture: medium

Mobility: medium

Curing heat: slight

Surface: matte

Transparency: good



Hema Free Tpo Free Matte Top Coat

E360

Function

1. Top coat
2. Matte effect nail art

Features

1. Velvet matte effect
2. Not too sticky powder
3. You don't need to wipe sticky layer before matte top coat



Non Stick Powder Matte Top Coat

3300-8

Function

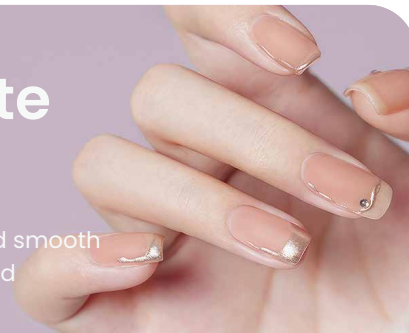
1. Top coat
2. Matte effect nail art
3. Specially researched for magic mirror nail art

Features

1. Velvet matte effect
2. Not sticky powder when you apply chrome powder
3. You need to wipe stic layer before matte top coat

Attribute

Texture: medium
Mobility: medium
Curing heat: slight
Surface: matte and smooth
Transparency: good



Other

Reinforcing gel

nail tip gel

French press on nail glue gel

press on nail solid glue

super diamond gel glue

hard gel

flex hard gel

3D rhinestone glue gel

gel remover

Attribute

Texture: thick and high viscosity
Mobility: slow
Leveling: great
Curing heat: low
Flexibility: good
Adhesion: good
Soak off: yes



Reinforcing Gel

2800

Function

Reinforce weak nails, make the nail surface flat



Before

After

Features

1. Thick and sticky texture protect nails well
2. Making nail surface flat after apply glitter on nails





Nail Tip Gel

2402

Function

1. Adhere nail tips
2. Stick rhinestone

Features

1. No harm for nails
2. Won't turn white
3. Easy to adhere nail tips
4. Long lasting

Attribute

Texture: thick and high viscosity

Mobility: slow

Curing heat: It will be better if use hand-held uv lamp and cure a few second firstly

Adhesion: great, but need to apply base gel first.

Soak off: no



Attribute

Texture: a little thick
Mobility: a little slow
Curing heat: zero
Flexibility: very good
Adhesion: great
Soak off: yes

French Press On Nail Glue Gel

Function

Adhere nail tips

Features

1. Comes with color
2. Rapid method of extending armor
3. Easy to adhere nail tips
4. Long lasting



4005B



Attribute

Texture: solid, non stick hand

Mobility: non flow

Curing heat: zero

Flexibility: flexible

Adhesion: great

Soak off: use alcohol or nail
cleanser



Press On Nail Solid Glue in soft tube

4006C

Function

1. Adhere press on nail tips
2. 3D nail art

Features

1. Nail tips are not easily displaced when pressed on nail
2. Remove nail tip just using nail cleanser or 75% alcohol
3. Quickly change nail art



Attribute

Texture: solid, non stick hand

Mobility: non flow

Curing heat: zero

Flexibility: flexible

Adhesion: great

Soak off: use alcohol or nail
cleanser



Press On Nail Solid Glue in jar

4006C

Function

1. Adhere press on nail tips
2. 3D nail art

Features

1. Nail tips are not easily displaced when pressed on nail
2. Remove nail tip just using nail cleanser or 75% alcohol
3. Quickly change nail art



need to be cured by
UV/LED lamp



peel off nail tip by
nail cleanser



no harm for nails and
press on nail tips





Attribute

Texture: thick
Mobility: slower
Curing heat: low
Hardness: high
Adhesion: good
Soak off: no

Super Diamond Gel Glue

3900

Function

1. Adhere rhinestone
2. 3D nail art
3. Chrome base

Features

1. No wipe, can apply chrome powder
2. High viscosity and adhere rhinestone well
3. Draw 3D nail art and not easy to flow



Hard Gel

W2300-1

Function

1. Construction
2. Reinforcing

Features

1. HEMA free
2. Slow flow rate, won't flow into the gap of nail
3. Filled in bottle, which is more convenient
4. High hardness and protect nail well

Attribute

Texture: thick in bottle

Mobility: lower

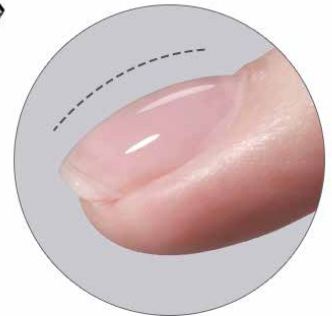
Leveling: good

Curing heat: It will be better if use handheld
uv lamp and cure a few second firstly

Hardness: high

Adhesion: good

Soak off: no





Attribute

Texture: medium
 Mobility: medium
 Leveling: good
 Curing heat: zero
 Hardness: a litter lower than w2300-1
 Flexibility: good
 Adhesion: good to press on nail tip
 Soak off: no



Flex Hard Gel

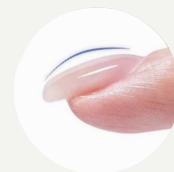
2400N

Function

1. Construtting
2. Nail tip glue

Features

1. Zero curing heat
2. High viscosity and adhere nail tip well
3. High hardness and protect nail well



3D Rhinestone Glue Gel

3902-2

Function

1. Adhere rhinestone
2. 3D nail art
3. Chrome base
4. Stamping nail art

Features

1. No wipe, can apply chrome powder
2. High viscosity and adhere rhinestone well
3. Draw 3D nail art and won't flow
4. As clear stamping gel and then apply chrome powder, you will get 3D chrome nail art



Attribute

Texture: very thick
Mobility: non flow totally
Curing heat: zero
Hardness: high
Adhesion: good
Soak off: no





Gel Remover

8001

Function

remove nail gel

Features

Remove nail gel quickly. But you need to shape top coat first.

Attribute

Texture: thick

Mobility: non flow

Removing time: about 60 second





Functional Adhesive