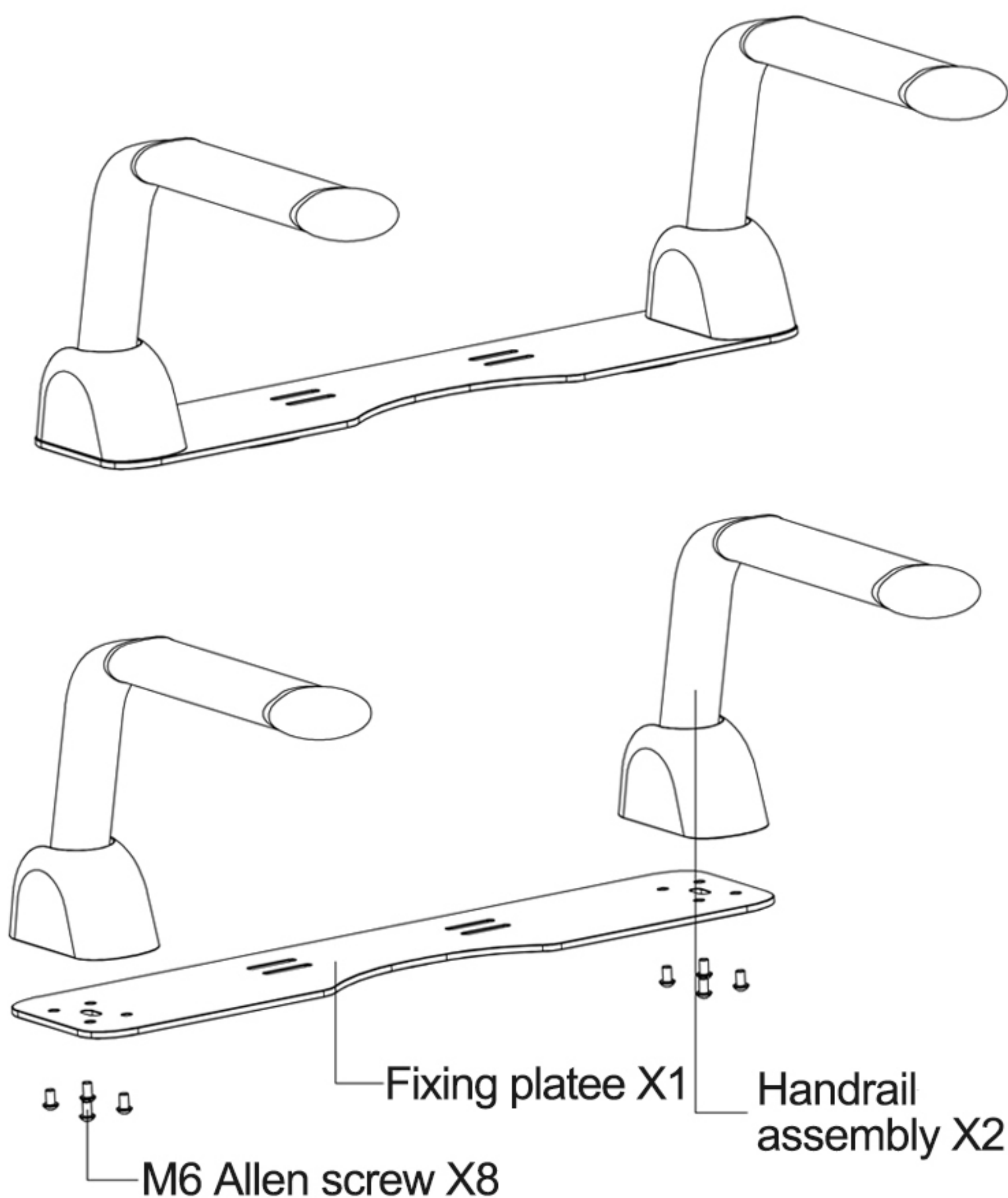


# Installation and User Manual




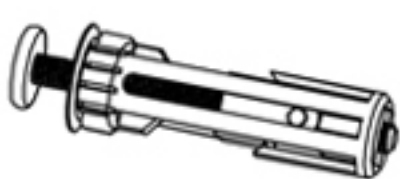
## Special Note

- Please read the instructions carefully to understand our toilet grab bar, and prepare the necessary tools beforehand to install the toilet armrests correctly as per the instructions. This will help prevent harm to you, your family, and your property.
- Please keep the instructions after reading them carefully.
- If the images in the instructions differ from the actual product, please refer to the actual product. If there are any upgrades or modifications to the product, we will not provide any further notifications.



## Toilet armrests and accessories



### List of accessories

	M6 Allen screw X8
	Allen wrench X1
	Manual X1
	Integrated U-shaped screw assembly X2

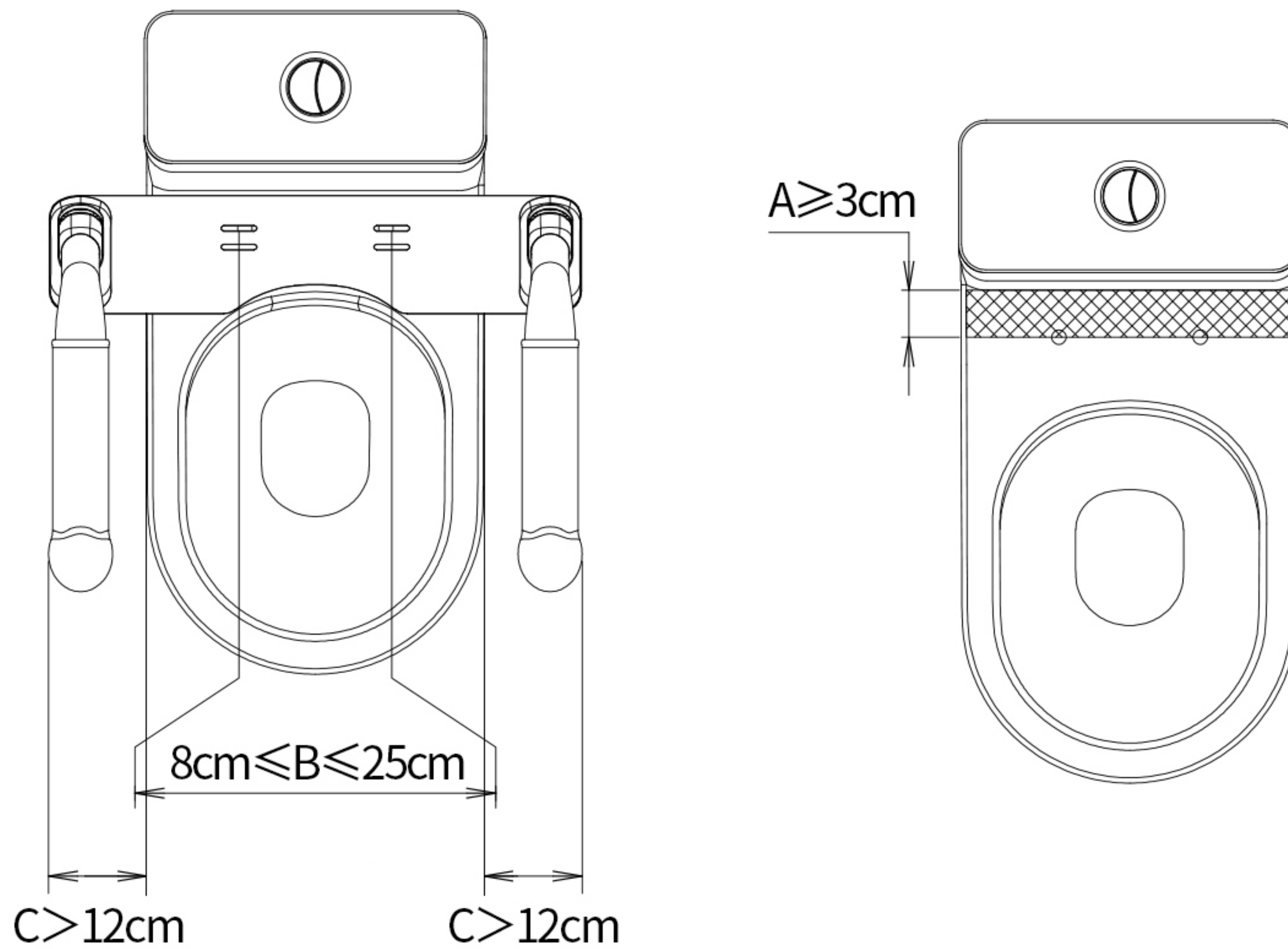
### Tools required for installation

	
Phillips screwdriver	Soft damp cloth

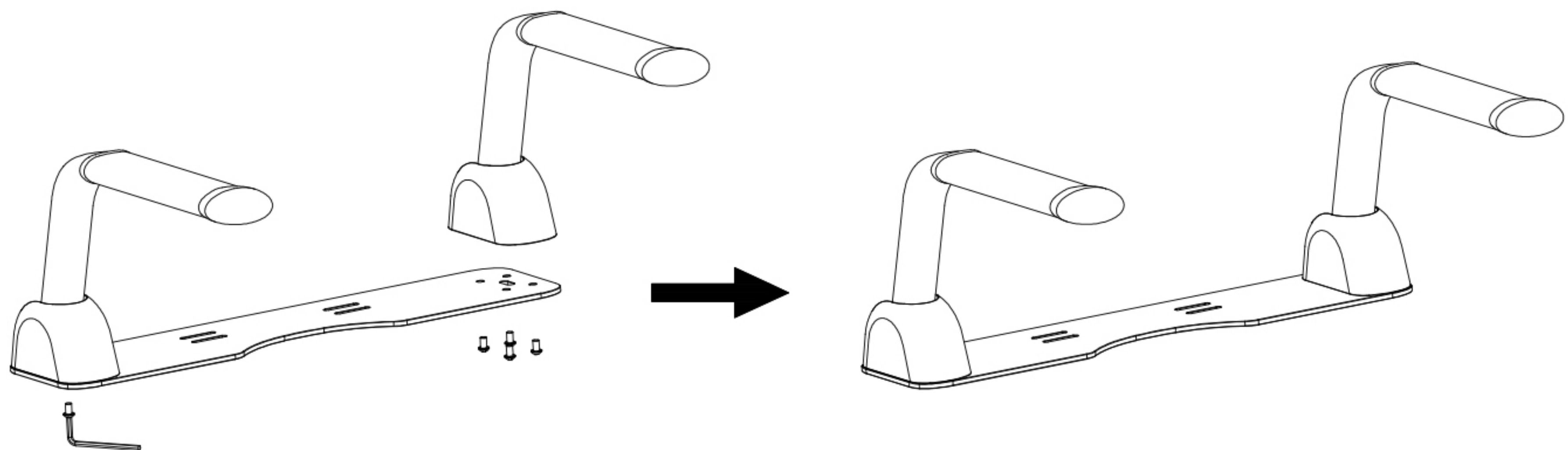
## Note

As shown in the following diagram, the toilet seat suitable for installing a toilet handrail must meet the following requirements:

- 1.To prevent interference between the tail of the toilet handrail and the toilet water tank, it is required that the area within a dimension A of  $\geq 3\text{cm}$  be a flat surface.
- 2.The distance between the installation holes of the toilet seat:  $8\text{cm} \leq B \leq 25\text{cm}$ .
- 3.The required space for installing the toilet handrail:  $C \geq 12\text{cm}$ .

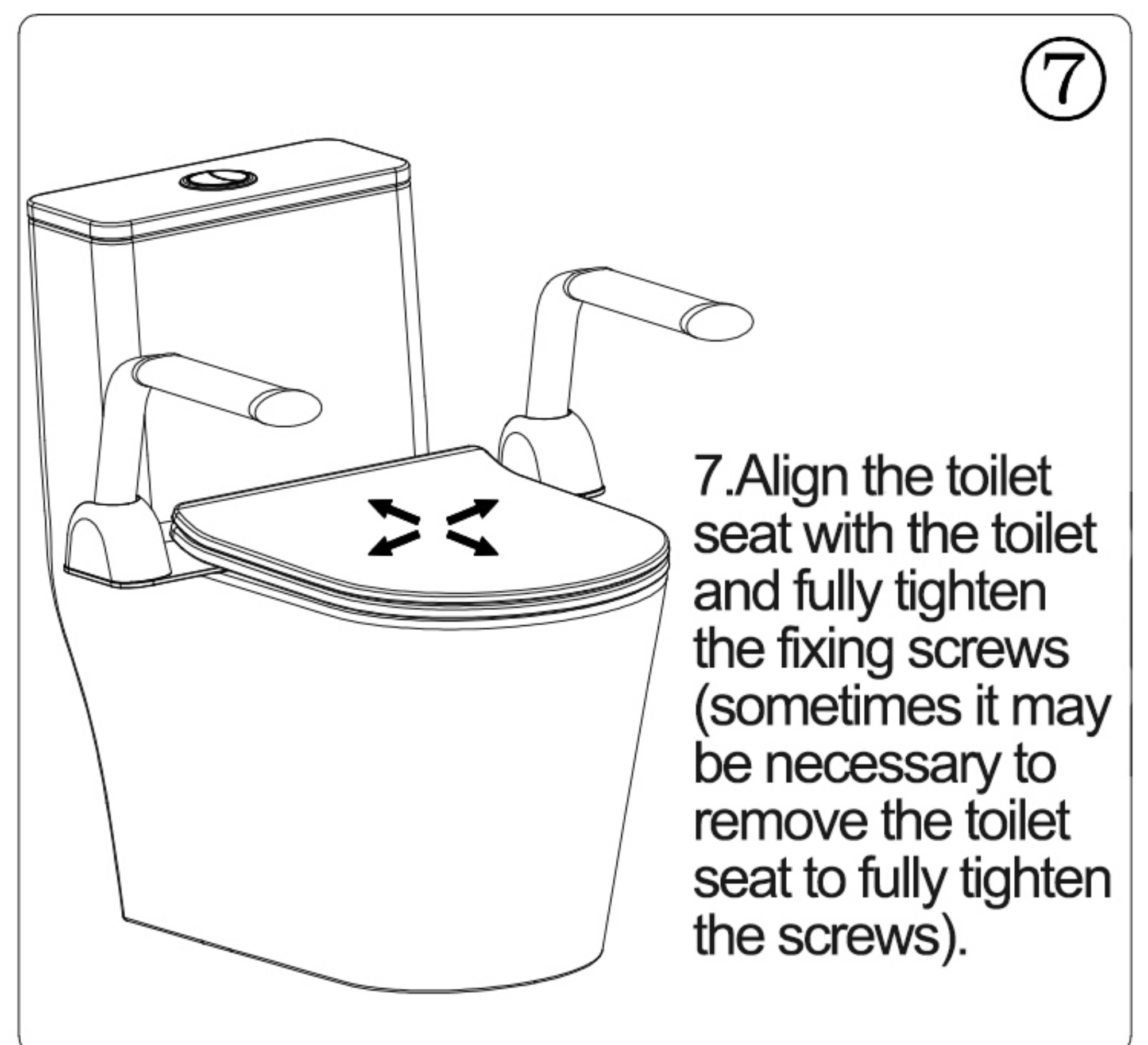
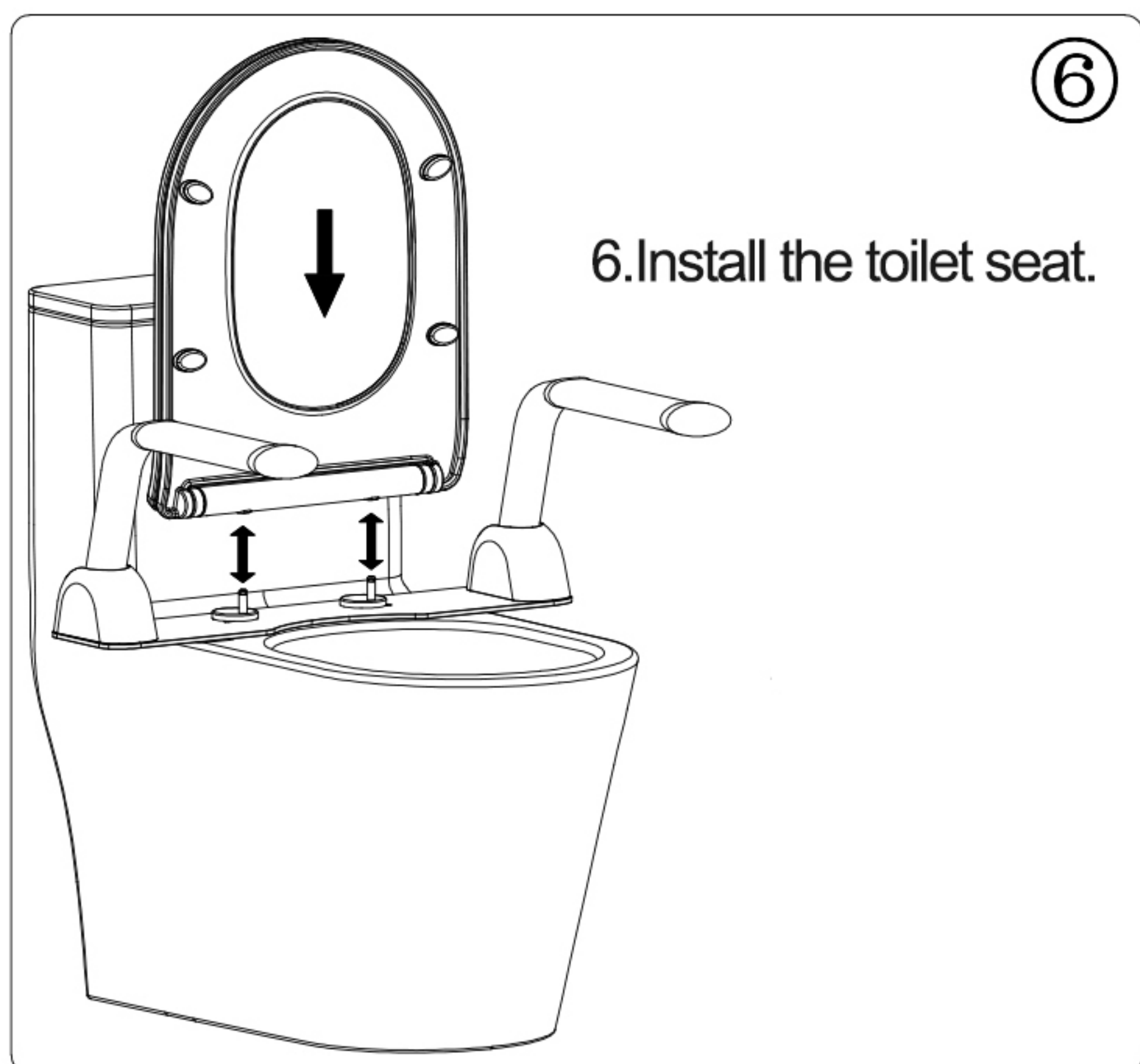
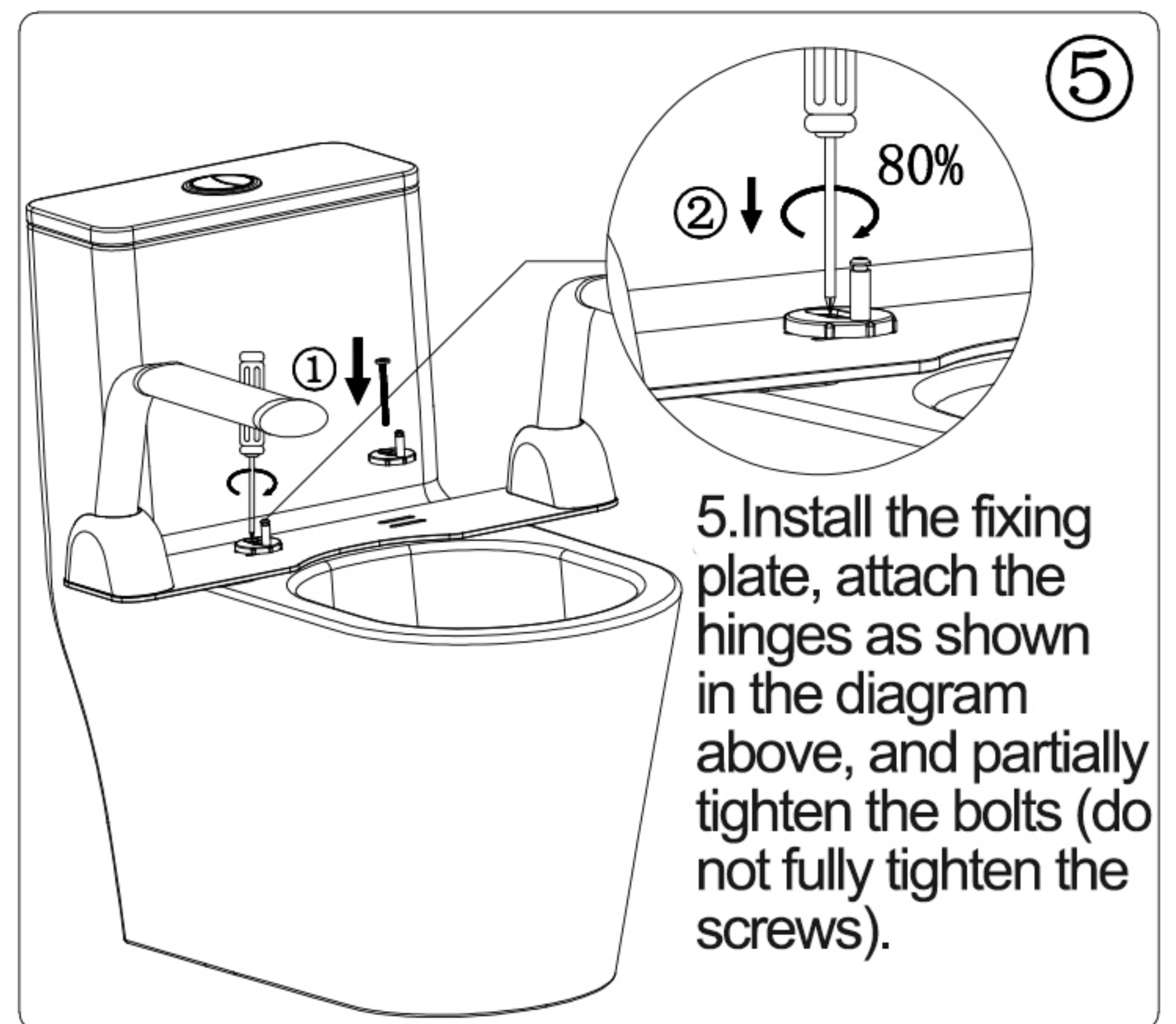
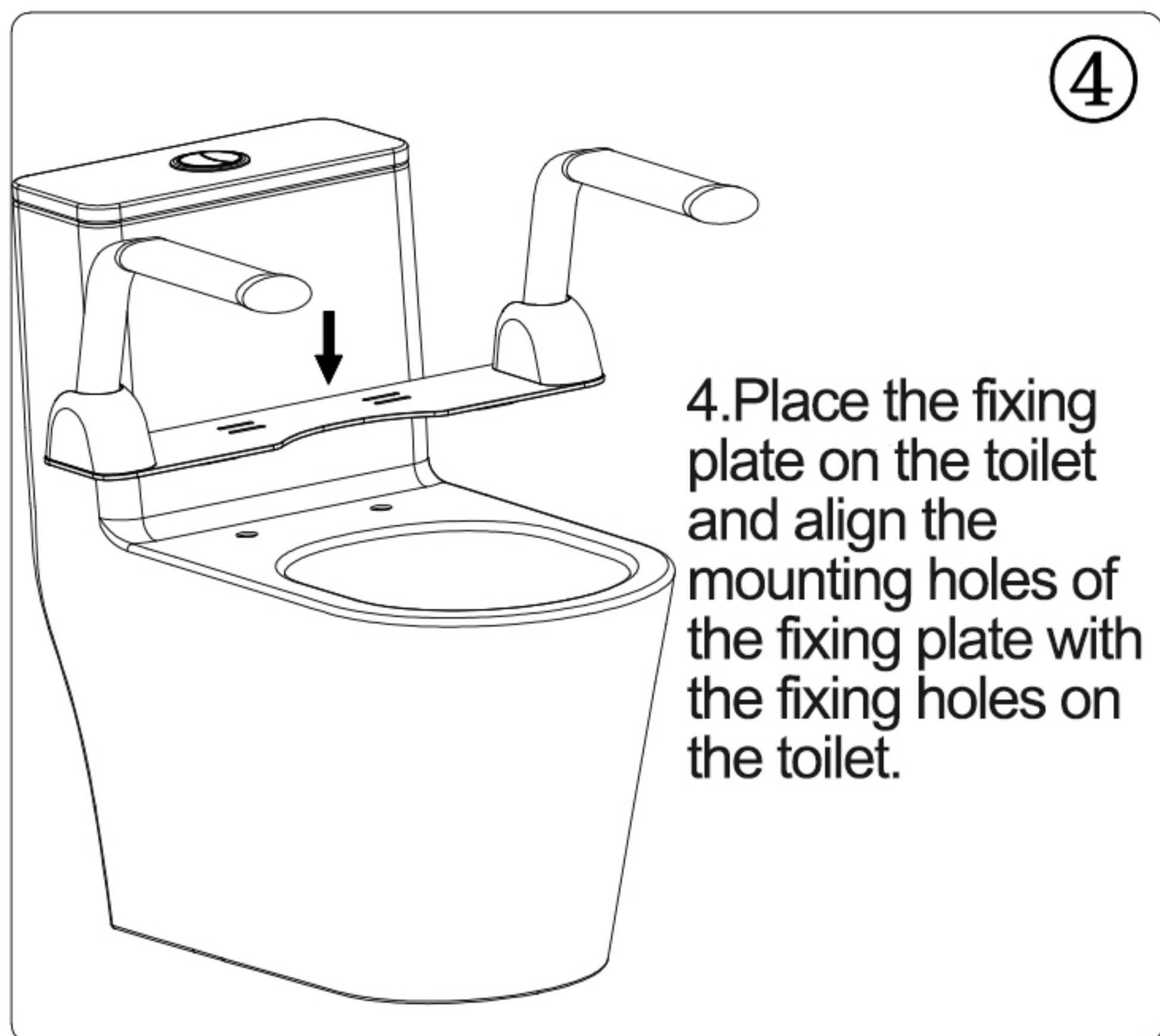
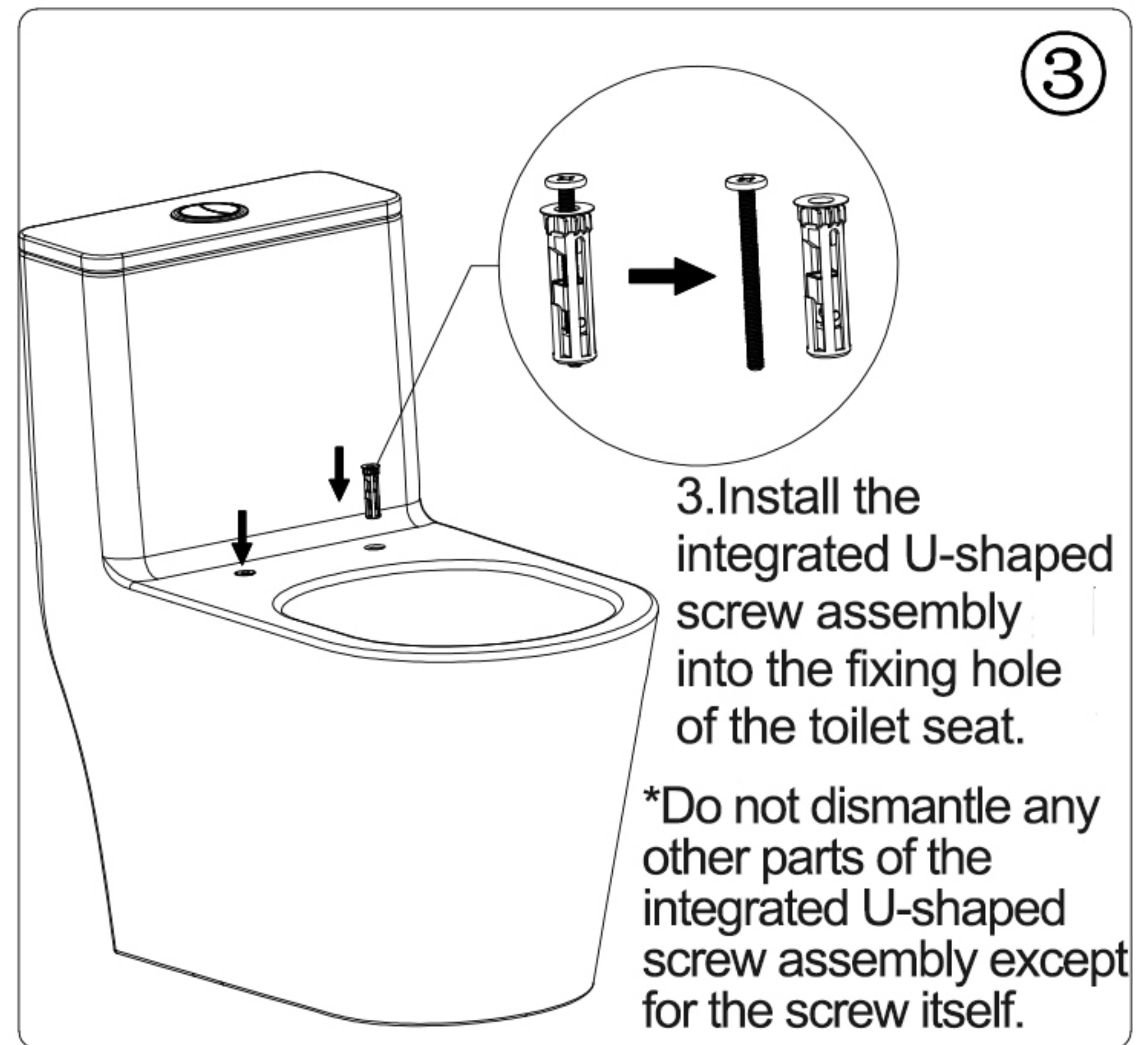
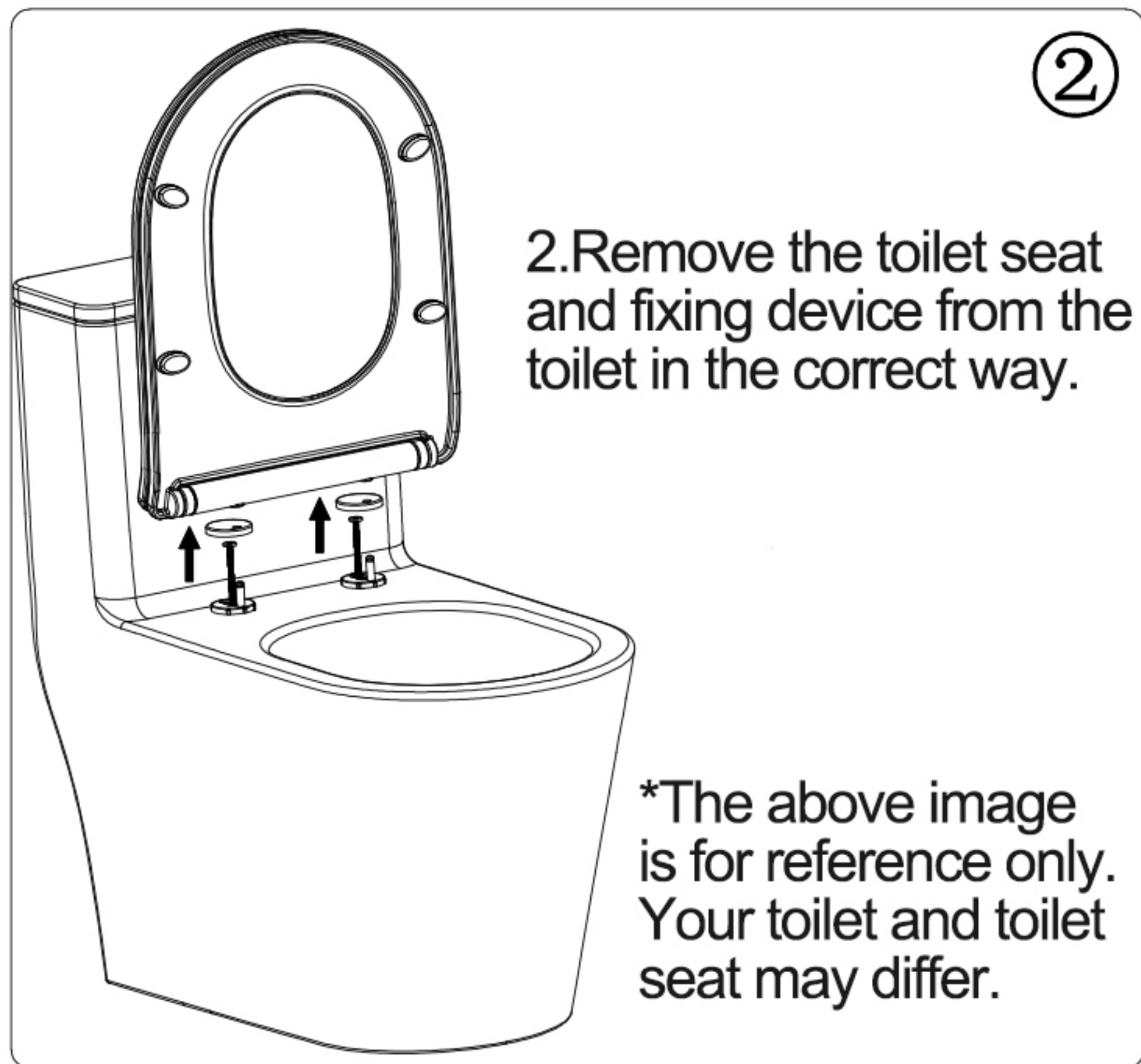


## Installation steps

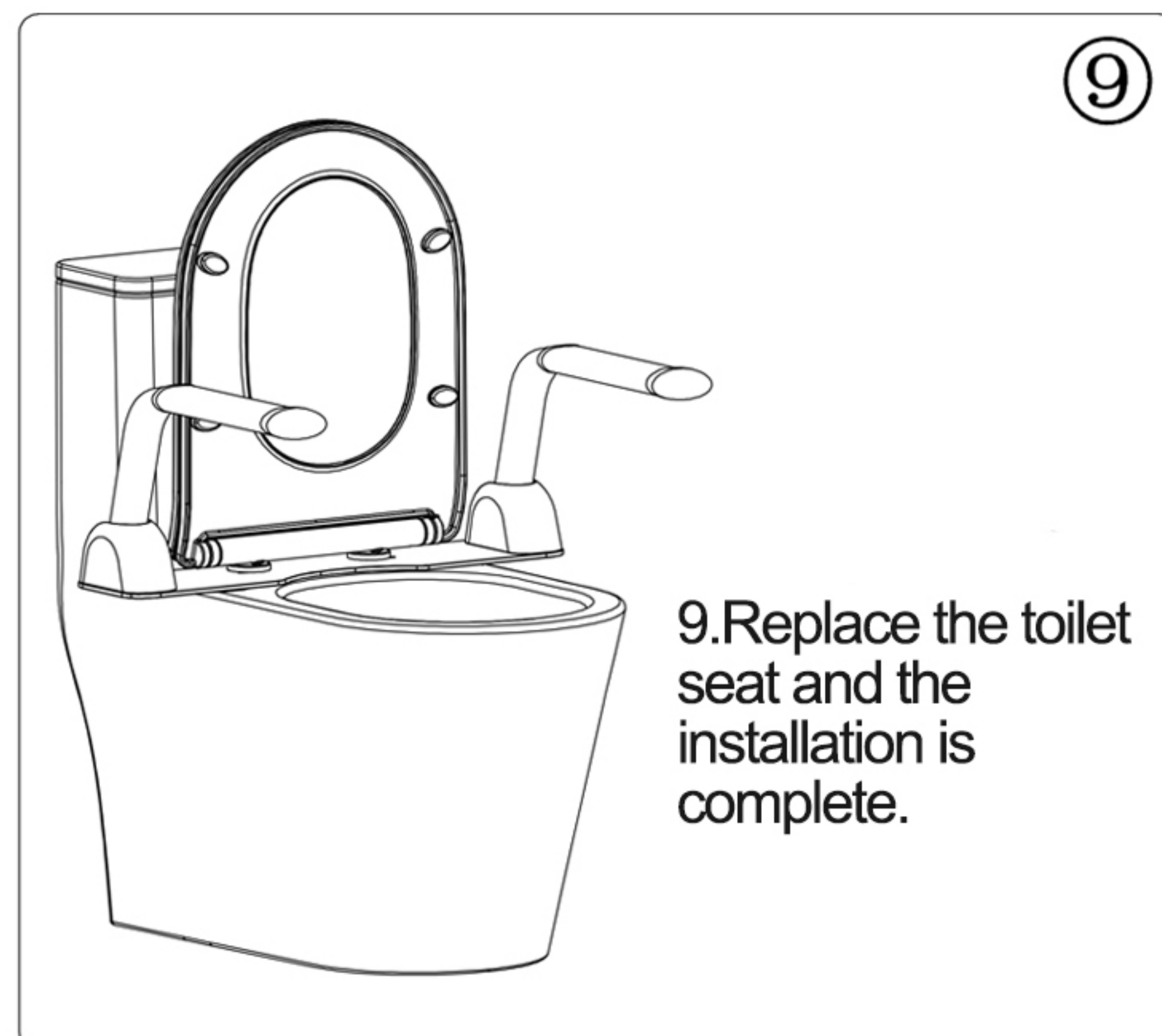
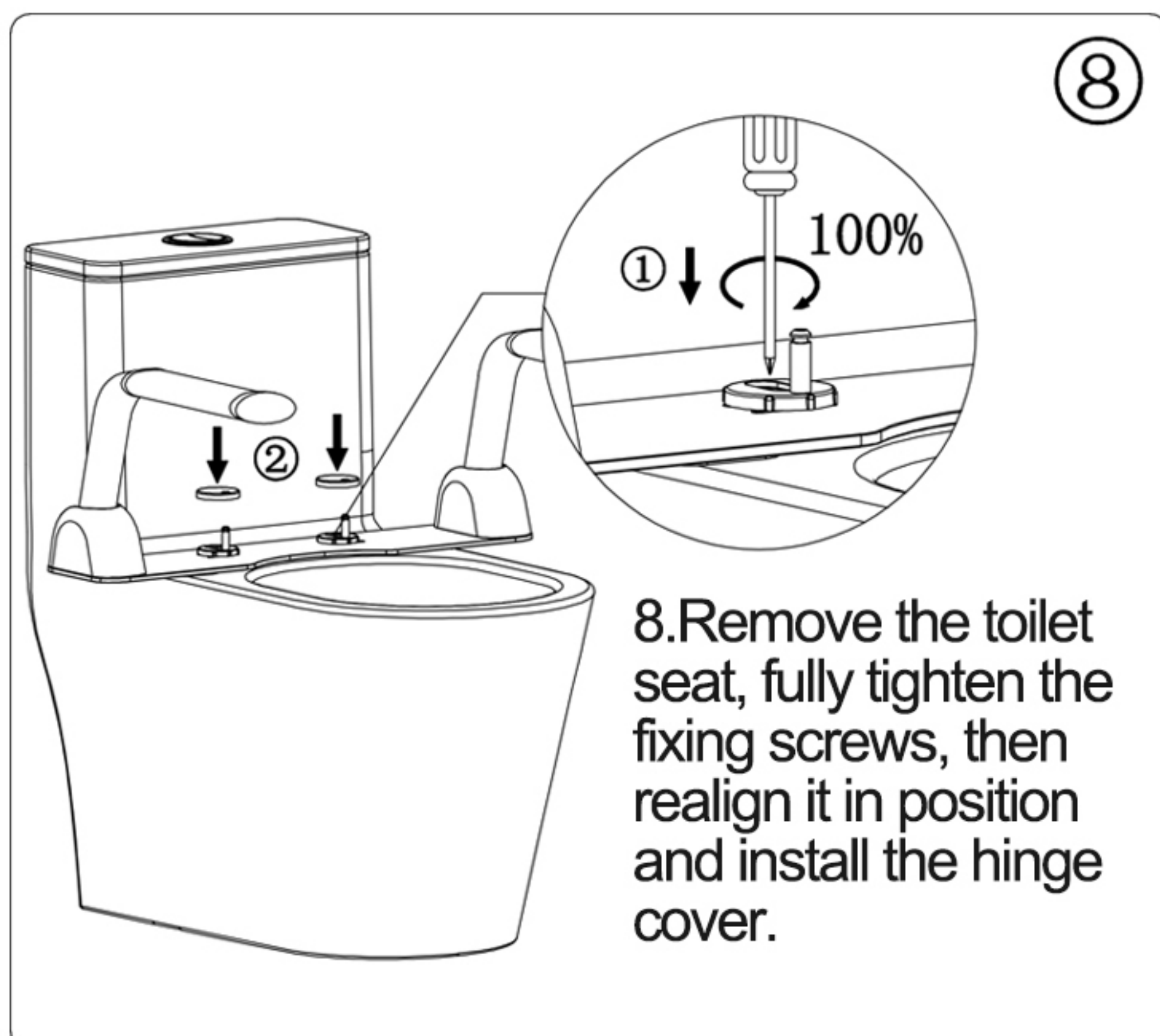


1. Install the handrail assembly, and lock the corresponding screws of the handrail assembly and the fixing plate with a M6 Allen screw, as shown in the figure above.



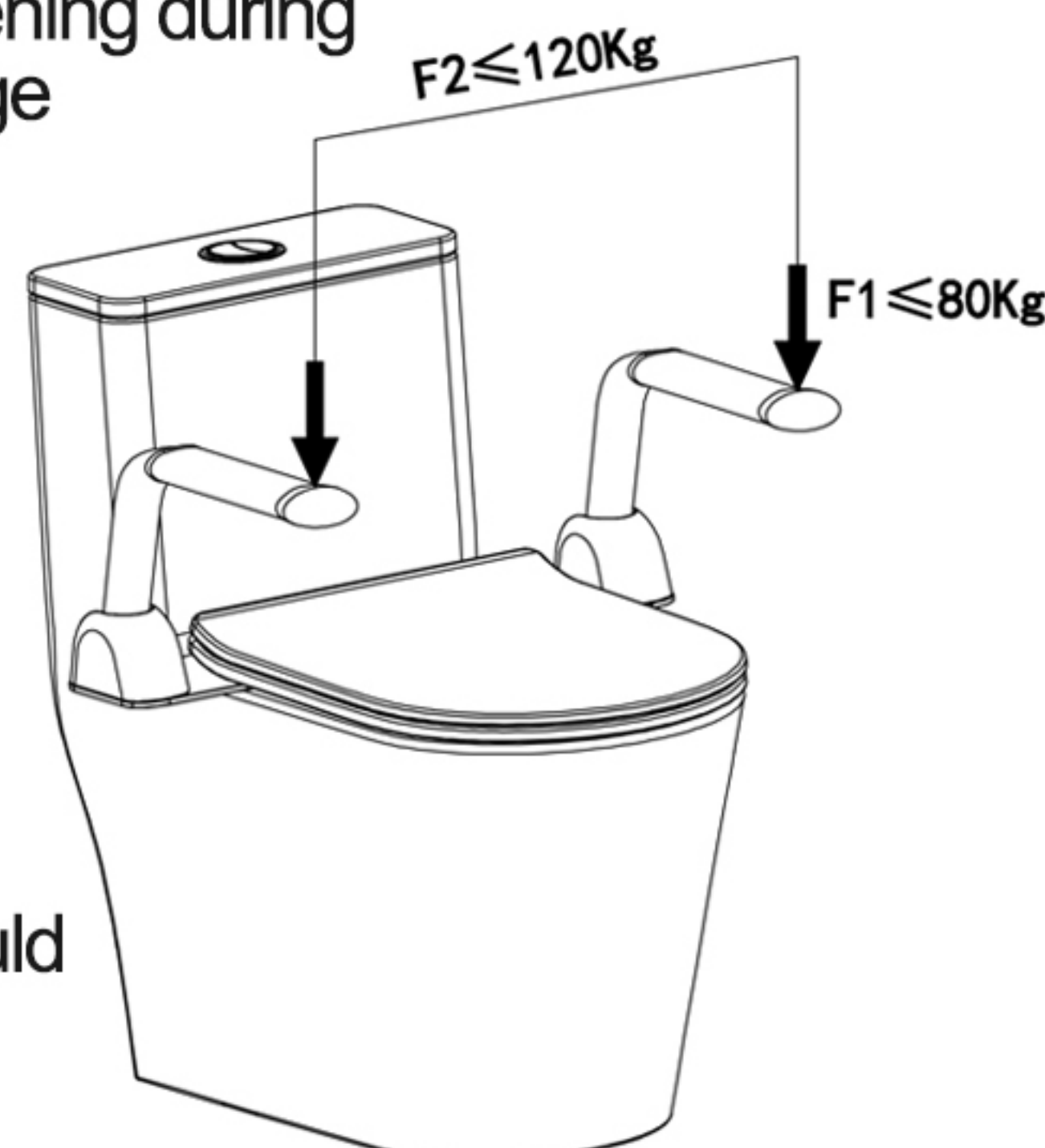






## Precautions:

- To prevent the locking nut from being pulled out or loosening during the use of the toilet armrest, please try to tighten the hinge base fixing assembly as much as possible without causing the nut to slip.
- To prevent the toilet from tipping over or having excessive gaps, please do not apply dynamic impact to the single armrest or exert excessively large static lateral pressure (F1 not exceeding 80Kg) on it after the toilet armrest has been correctly installed according to this manual.
- To prevent damage to the toilet armrest, the combined weight borne by both armrests simultaneously (F2) should not exceed 120Kg.
- The above images are for reference only.



## Cleaning and Maintenance of the Toilet:

- When cleaning the toilet, please use mild cleaning agents such as liquid detergent mixed with warm water. Avoid using abrasive cleaning products or high-concentration scrubbing agents, as they may damage the surface of the toilet or cause it to lose its shine.
- Carefully read the instructions on the cleaning agent to ensure its suitability for use on this product.
- Before cleaning the entire toilet, please test the cleaning agent on an inconspicuous area of the product.
- After using the cleaning agent to scrub the toilet, please immediately wipe it clean with water and rinse the surface. At the same time, please wipe away any cleaner that has splashed onto nearby surfaces.
- Please use a soft and damp sponge or cloth for cleaning. Avoid using abrasive materials such as brushes or scrubbing pads.





# Specification of the Product

Product model	XC-MF-01	Handrail tubing	Carbon steel
Fixing seat	Carbon steel electrophoresis	Fixing plate	5mm carbon steel baking paint
Handrail	ABS	Install	No punch
Packing measurement	720*300*120MM	Net weight / gross weight	5.6kg/6.6kg

Note: Due to manual measurement, there may be slight errors. Please refer to the actual product received.

All measurements below are in millimeters (mm).

