

S SERIES

(INDOOR STEPPED INSERT KEYED)



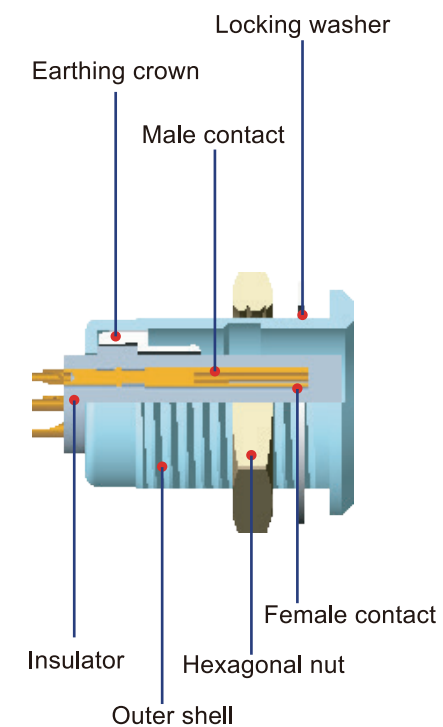
MAIN FEATURES:

1. Security of the push –pull self-latching system
2. Solder or PCB contacts (straight or elbow)
3. High Packing density for space saving
4. Stepped insert keyed to avoid cross mating of similar connectors
5. Polarization by stepped insert fitted with male and female contacts
6. 360° screening for full EMC shielding

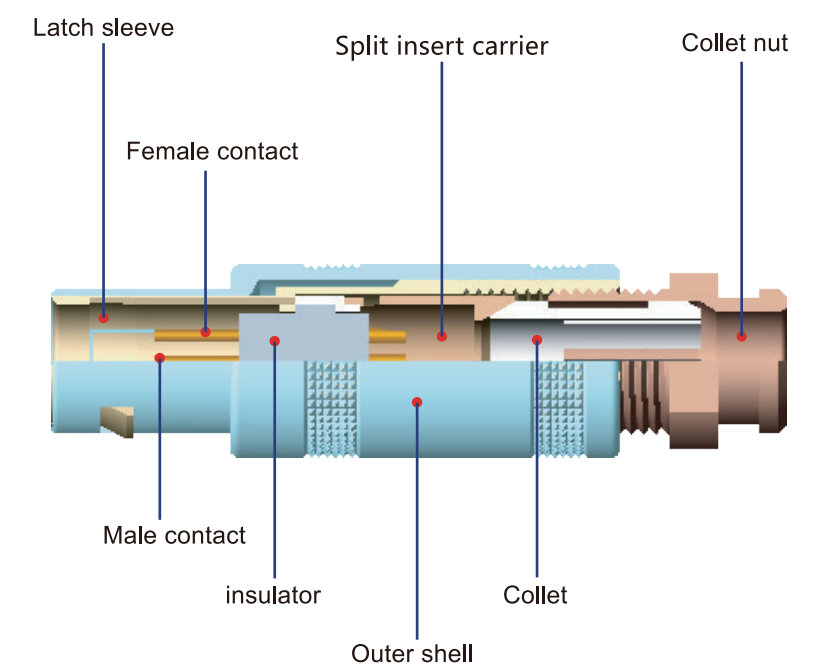
PART SECTION SHOWING INTERNAL COMPONENTS

S series

Fixed socket

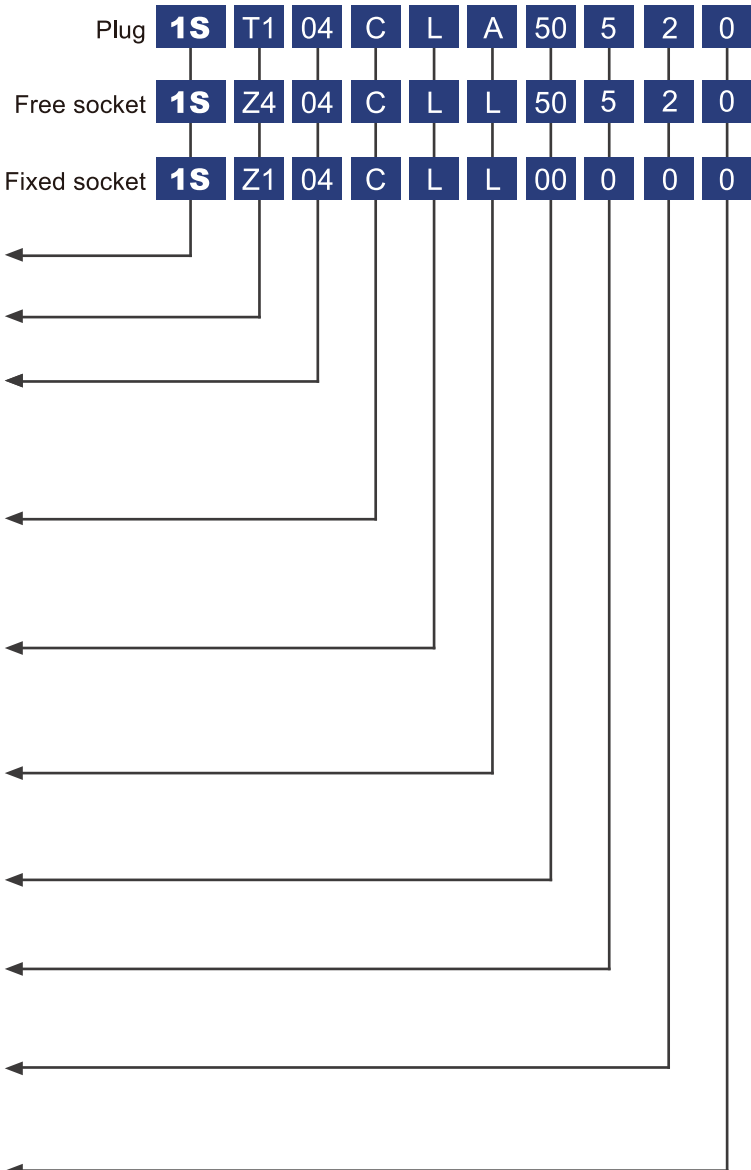


Straight plug



Part Numbering System

- 1.Series:(Page 60)
- 2.Housing model:(Page 60)
- 3.Insert configuration:(Page 64)
- 4.Housing material
C=Chrome plated brass
K=Black Chrome plated brass
N=Nickel plated brass
T=Stainless steel
L=Aluminium alloy anodized
H=ABS/brass(only for Z11 and Z12 elbow sockets)
- 5.Insulator material
L=PPS、 T=PTFE
- 6.Contact type
A=Solder male L=Solder female
N=Print female V=Print female 90°
W=Print male 90° D=Print male
- 7.Cable OD:(Page 83)
- 8.Outer Shell Patterns
5=Knurl Pattern
- 9.Collet Nut Type
1=Cone (without bend relief)
2=Collet nut for bend relief
- 10.Earthing Tag
0=Without Earthing Tag 1=With Earthing Tag



PART NUMBER EXAMPLE:

Straight plug with cable collet:

1ST104CLA50520=1S series straight plug with cable collet,multipole type with 4 contacts,chrome plated brass outer shell, PPS insulator, 2 male and 2 female contactssolder contact,collet for 5.0mm diameter cable, knurl outer shell pattern, collet nut for bend relief,without earthing tag.

Free socket:

1SZ404CLL50520=1S series free socket with cable collet,multipole type with 4 contacts,chrome plates brass outer shell,PPS insulator,2 male and 2 female contacts,solder contact,collet for 5.0mm diameter cable,knurl outer shell pattern,collet nut for bend relief, without earthing tag.

Fixed socket:

1SZ104CLL00000=1S series fixed socket, nut fixing,multipole type with 4 contacts,chrome plated brass outer shell, PPS insulator,2 male and 2 female contactssolder contact, without earthing tag.

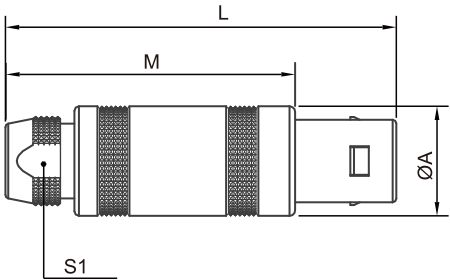
TECHNICAL CHARACTERISTICS

Characteristics	Parameter
Locking Type	push pull self-latching type
Working Temperature	-55°C~ +250°C
Maximum Humidity	up to 95% at 60°/140°F
Shielding Efficiency	75dB(10MHz) 40dB(1GHz)
Resistance to Vibration	15g[10Hz~2000Hz]

Characteristics	Parameter
Salt spray corrosion test	96hr
Shock resistance	100g,6ms
Endurance	5000 cycles
Protection index(mated)	IP50

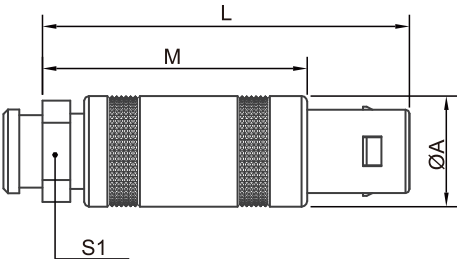
Housing Models

T1 PLUG STRAIGHT PLUG, WITH CABLE COLLET



Reference		Dimensions(mm)			
Series	Model	A	L	M	S1
0S	T1	8.8	34.5	24.5	6.5
1S	T1	11.8	42.5	31.5	8.5

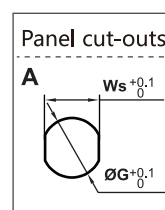
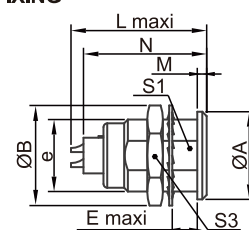
T1 PLUG STRAIGHT PLUG, WITH CABLE COLLET AND NUT FOR FITTING A BEND RELIEF



Reference		Dimensions(mm)			
Series	Model	A	L	M	S1
0S	T1	8.5	34.5	24.5	7.3
1S	T1	11.8	39.5	28.5	9

Z1 SOCKET

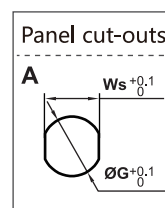
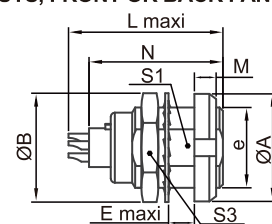
FIXED SOCKET, FRONT PANEL MOUNT, NUT FIXING



Reference		Dimensions(mm)									Panel cut-outs		
Series	Model	A	B	E	L	M	N	S1	S3	e	Ws	Ø	Type
0S	Z1	10	12.5	7	18	1.2	16	8.2	11	M9*0.5	8.3	9.1	A
1S	Z1	14	16	7.5	22	1.5	19.4	10.5	14	M12*1.0	10.6	12.1	A

Z2 SOCKET

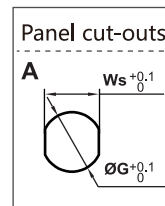
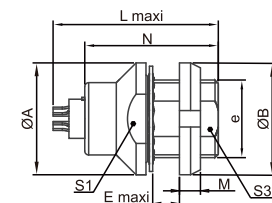
FIXED SOCKET WITH TWO NUTS, FRONT OR BACK PANEL MOUNT



Reference		Dimensions(mm)									Panel cut-outs		
Series	Model	A	B	E	L	M	N	S1	S3	e	Ws	Ø	Type
0S	Z2	12	12.5	5.5	18	2.5	16.0	8.2	11	M9*0.5	8.3	9.1	A
1S	Z2	16	16	6.0	22	3.2	19.4	10.5	14	M12*1.0	10.6	12.1	A

Z3 SOCKET

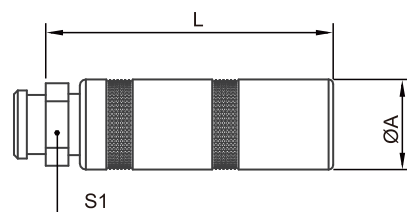
FIXED SOCKET, BACK PANEL MOUNT, NUT FIXING



Reference		Dimensions(mm)									Panel cut-outs		
Series	Model	A	B	E	L	M	N	S1	S3	e	Ws	Ø	Type
0S	Z3	12	12	5.5	18	2.5	16.0	8.2	11	M9*0.5	8.3	9.1	A
1S	Z3	16	16	6.0	22	3.2	19.4	10.5	14	M12*1.0	10.6	12.1	A

Z4 SOCKET

FREE SOCKET, FOR CABLE CONNECTING, CABLE MOUNT, AND NUT FOR FITTING A BEND RELIEF

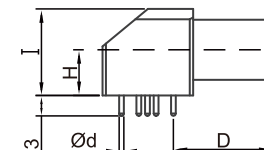
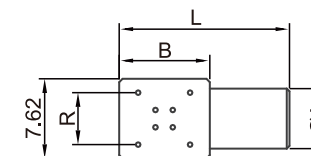
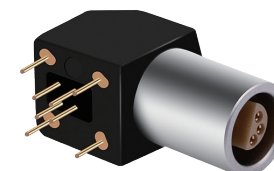


Reference		Dimensions(mm)		
Series	Model	L	A	S1
0S	Z4	34	9.5	7.3
1S	Z4	40	12	9

ELBOW SOCKET MODELS

Z11 SOCKET

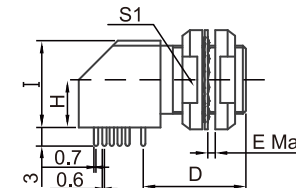
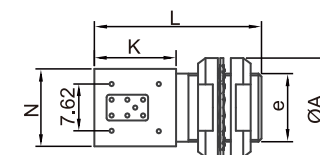
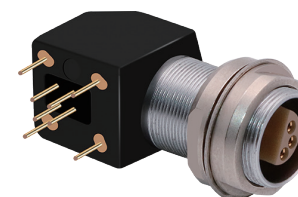
ELBOW (90°) SOCKET FOR PRINTED CIRCUIT, DIMENSIONS FOR SOLDER SIDE AND CONTACT SIDE AS BELOW



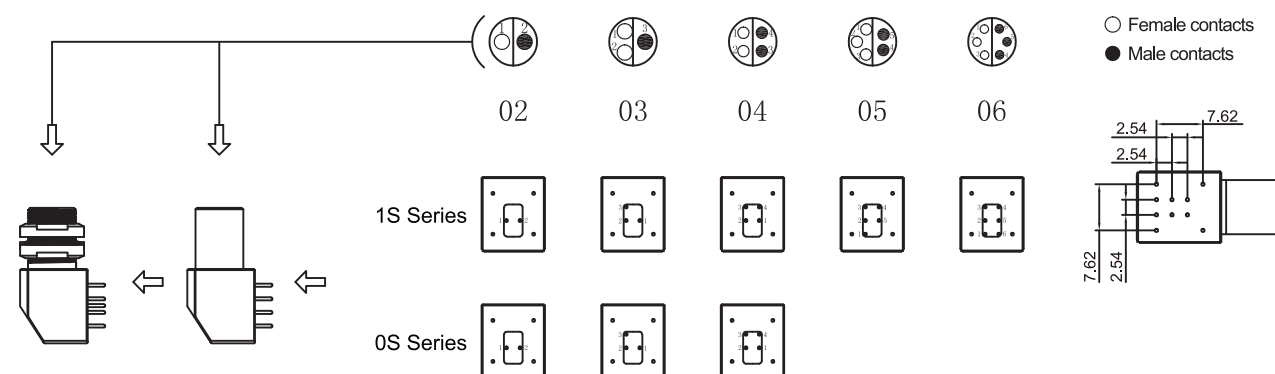
Reference		Dimensions(mm)							
Series	Model	A	B	N	I	H	D	d	L
0S	Z11	9	14.2	12	12.7	6.7	14.6	0.7	25
1S	Z11	11	13.3	13	14.2	7.5	16.6	0.7	27

Z12 SOCKET

ELBOW (90°) SOCKET FOR PRINTED CIRCUIT, WITH TWO NUTS, DIMENSIONS FOR SOLDER SIDE AND CONTACT SIDE AS BELOW

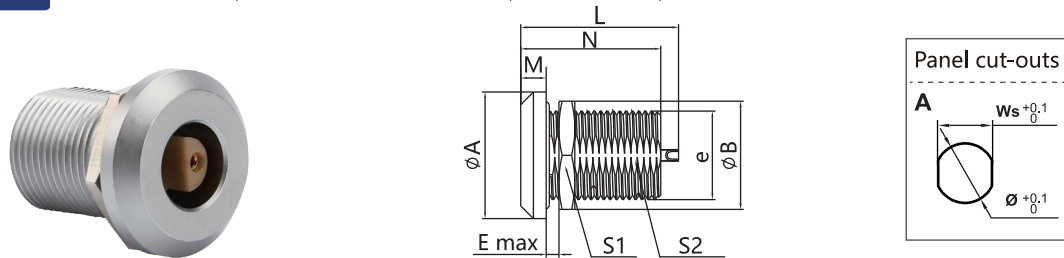


Reference		Dimensions(mm)									
Series	Model	A	K	N	I	H	A	L	D	S1	e
0S	Z12	12	14.2	12	12.7	6.7	12	25	14.6	10	M9*0.5
1S	Z12	14	13.3	13	14.2	7.5	15	27	16.6	13	M11*0.5



Z7 SOCKET

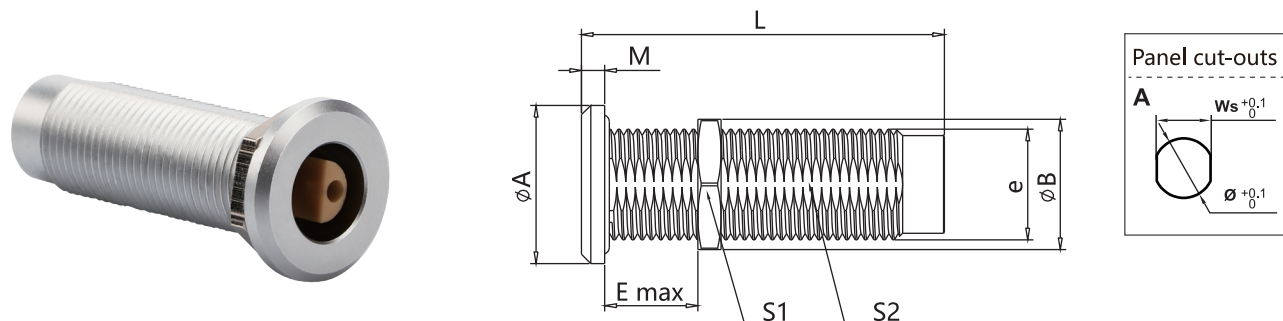
FIXED SOCKET, FRONT PANEL MOUNT, NUT FIXING, WATERTIGHT OR VACUUMTIGHT



Reference		Dimensions(mm)									Panel cut-outs		
Series	Model	A	B	E	L	M	N	S1	S2	e	Ws	Ø	Type
1S	Z7	19.9	19.6	13	24.8	4	22	17	12.5	M14*1.0	12.6	14.1	A

Z19 SOCKET

FIXED COUPLER, NUT FIXING, WATERTIGHT OR VACUUMTIGHT



Reference		Dimensions(mm)								Panel cut-outs		
Series	Model	A	B	E	L	M	S1	S3	e	Ws	Ø	Type
1S	Z19	17	16	28	39	2.5	14	10.5	M12*1.0	10.0	12.1	A

INSERT CONFIGURATION

MULTIPOLE

Series	Code	Solder contacts		Contact ø(mm)	Resistance (mΩ)	Rated current (A)	Test voltage (V)	Working voltage (V)
		Male	Female					
0S	02			0.9	5	10	1500	500
	03			0.7	7.5	7	1000	330
	04			0.7	7.5	7	1000	330
1S	120			2.0	5	18	1700	2400
	02			1.3	5	15	1250	450
	03			0.9	6	10	1200	450
	04			0.9	6	10	1200	400
	05			0.9	7.5	10	1500	500
				0.7	7.5	7	1500	500
	06			0.7	7.5	7	1500	500

CACULATION METHOD: WORKING VOLTAGE= TEST VOLTAGE/3