

PROFESSIONAL HARD SEAL VALVE  
MANUFACTURER  
硬密封阀门专业工厂

宁波太坦工业自动化有限公司  
NINGBO TITAN INDUSTRIAL AUTOMATION CO.,LTD.

📍 地址: 浙江省宁波市奉化区南山北路188号  
📍 Add: NO.188,Nanshan North Road,Fenghua District,  
Ningbo City,Zhejiang Province, China.

✉ Email: sales@titan-automation.com  
📞 Wechat: 008613616569784  
🕒 Whatsapp: 008613616569784  
💬 Skype:pinceprince  
📱 Mobile phone: 0086-13616569784  
☎ Tel: 0086-574-87211981  
📠 Fax: 0086-574-87022814  
🌐 www.titan-automation.com

NTA<sup>®</sup>  
太坦阀门  
NTA VALVE

NTA  
-PROFESSIONAL HARD  
SEAL VALVE MANUFACTURER  
太坦 - 硬密封阀门专业工厂



HIGH QUALITY VALVE MANUFACTURER

# ABOUT NTA

## 企业简介

Headquartered in Ningbo city China, N.T.A(TITAN) is one of a greatest pneumatic&hydraulic technology and engineering company providing innovative solutions for customers in industrial automation market, helping customers to realize maximize production, protect personnel and the environment while optimizing their energy and operating costs.

As a national leader in pneumatic technology, our 47 years of mechanical spare parts manufacturing and 26 years of pneumatic components manufacturing experience are an important basis for our flexibility, creativity and innovative skills to meet our customers' needs.

Established year: 1972  
Number of employees : 300 workers  
Number of engineers: 15 engineers  
Number of equipments: more than 350sets  
Total structure area: 39,000 square meters  
Certificates: ISO9001,CE,ROHS



## contents 目录

01-02	2-PC BALL VALVE FLANGE END WITH GB DIRECT MOUNTING PAD
03-04	2-PC BALL VALVE FLANGE END WITH ANSI DIRECT MOUNTING PAD
05	2PC DIN HIGH PLATFORM FLANGE VALVE PN16
06-12	3-PC HARD SEAL BALL VALVE
13	3-WAY BALL VALVE THREAD END WITH DIRECT MOUNTING PAD
14-18	2-PC STAINLESS STEEL WOG BALL VALVE FULL PORT 2000PSI
19	1-PC BALL VALVE THREAD END
20	THREADED GATE VALVE/GLOBE VALVE
21	SWING/VERTICAL CHECK VALVE
22	Y FILTER/VENT
23	YZ11XBRANCH PIPE PRESSURE REDUCING VALVE
24	Y-TYPE STRANER FLANGE END 150LB/300LB





Devote to pipe line fluid power  
Focus on innovative solutions





# INNOVATION & QUALITY 创新&质量

对太坦来说,创新不仅仅是一句宣传语,  
这是我们每天做事的方式。

太坦的每个成员都致力于和顾客一起重新定义和开发新的应用领域!

To N.T.A(TITAN) , innovation isn't just a marketing phrase,  
it's the way we do business every day.

Our team is committed to working with our customers to help define all the applications.



## APPLICATION FIELD 应用领域

公司产品广泛运用于  
石油、化工、天然气、轻工、电力、制药、冶金、  
供水、军工等行业。

The company's products are widely used in petroleum,  
chemical, natural gas, light industry, power, pharmaceutical, metallurgy,  
water supply, military industry and other industries.



Petroleum  
石油



Architecture  
建筑



Biochemistry  
生化



Metallurgy  
冶金



Chemistry  
化工



Electricity  
电力



Hydraulic  
水利



Environmental  
环保

## Smart manufacturing

### 智能制造

企业生产原材料  
半成品及产品进行合理控制严格按照ISO9001质量管理体系生产  
通过提高工作质量保证产品的稳定性公司产品质量检验的合格  
决不让一件不合格的产品出厂既是对客户负责,更是对我们自己负责.

Enterprise production raw materials  
Semi-finished products and products are reasonably controlled and produced in strict accordance with the ISO9001 quality management system  
Ensuring the stability of products by improving the quality of work  
Never let an unqualified product leave the factory is not only responsible to the customer, but also to ourselves.







特征 Features

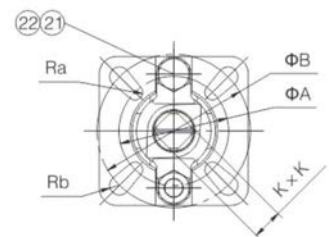
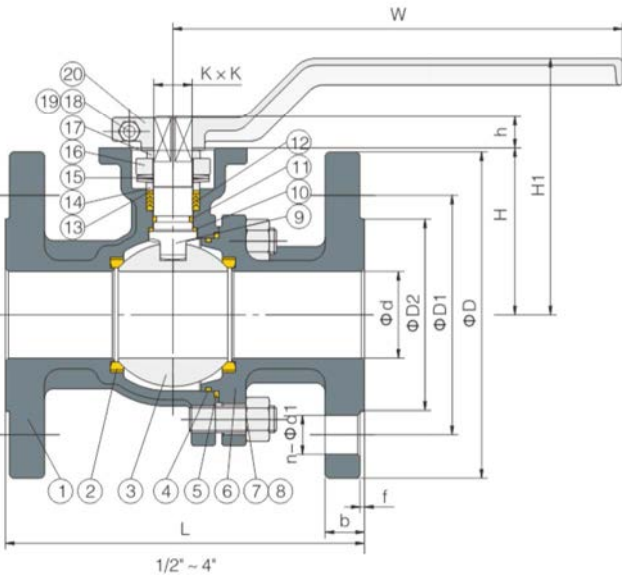
全通径 Full port, 1/2"~12" (DN15~DN300)  
工作压力 W.P.: PN16/40  
工作温度 W.T.: -20℃~180℃  
精密铸造 Investment casting  
防静电装置 (可选) Anti-static device (option)  
带锁手柄 Locking device handle  
ISO5211直装高平台设计 ISO 5211 Direct mounting pad  
API 607 防火结构 (可选) API 607 Fire safe (option)  
自动化装置 (可选) Automation accessories (option)

JB PN16

设计标准 Design: GB / T 12237  
法兰标准 Flange dimension: JB / T 79.1  
结构长度 Face to face: JB / T 1686  
检验 & 测试 Inspection & testing: GB / T 13927, JB / T 9092

HG PN16/40

设计标准 Design: GB / T 12237  
法兰标准 Flange dimension: HG / T 20592  
结构长度 Face to face: GB / T 12221  
检验 & 测试 Inspection & testing: GB / T 13927, JB / T 9092



材料列表 Material List

序号 No.	零件名称 PARTS	材质 MATERIAL		
1	阀体 BODY	WCB	CF8	CF8M
2	阀座 SEAT	PTFE		
3	球体 BALL	CF8	CF8	CF8M
4	O 形圈 O-RING	FPM		
5	垫片 GASKET	PTFE		
6	阀盖 BONNET	WCB	CF8	CF8M
7	螺栓 BOLT	304		
8	螺母 NUT	304		
9	阀杆 STEM	304	304	316
10	阀杆垫圈 STEM WASHER	PTFE+25% GF		
11	O 形圈 O-RING	FPM		
12	填料 PACKING	PTFE		
13	耐磨垫 WEAR WASHER	PTFE+25% GF		
14	压圈 GLAND	304		
15	蝶形弹簧 DISC SPRING	304		
16	压板 GLAND FLANGE	CF8		
17	定位片 STOPPER	304		
18	内六角螺钉 HEX SOCKET BOLT	304		
19	螺母 NUT	304		
20	手柄 HANDLE	WCB/CF8		
21	螺栓 BOLT	304		
22	螺母 NUT	304		

尺寸列表 Dimensions

G22 机械部 JB PN16

单位 Unit: mm

尺寸 Nominal Diameter	L	d	D2	D1	D	b	f	n-φd1	H	h	H1	W	Ra	Rb	A	B	K×K
15 1/2"	130	15	45	65	95	14	2	4-14	51	9	83	140	3.0	3.5	36	50	9X9
20 3/4"	140	20	55	75	105	14	2	4-14	56	9	88	140	3.0	3.5	36	50	9X9
25 1"	150/140	25	65	85	115	14	2	4-14	62	11	97	170	3.0	3.5	42	50	11X11
32 1-1/4"	165	32	78	100	135	16	2	4-18	72	11	107	170	3.0	3.5	42	50	11X11
40 1-1/2"	180	40	85	110	145	16	3	4-18	78	14	116	200	3.5	4.5	50	70	14X14
50 2"	200	50	100	125	160	16	3	4-18	86	14	124	200	3.5	4.5	50	70	14X14
65 2-1/2"	220	65	120	145	180	18	3	4-18	102	17	146	300	4.5	5.5	70	102	17X17
80 3"	250	80	135	160	195	20	3	8-18	115	17	159	300	4.5	5.5	70	102	17X17
100 4"	280	100	155	180	215	20	3	8-18	137	17	181	300	4.5	5.5	70	102	17X17
125 5"	320	125	185	210	250	22	3	8-18	170	25	255	650	5.5	6.5	102	125	22X22
150 6"	360	150	210	240	280	24	3	8-23	192	30	277	800	5.5	6.5	102	125	27X27
200 8"	400	200	265	295	335	26	3	12-23	234	35	280	300	5.5	6.5	102	125	27X27

尺寸列表 Dimensions

G2S 化工部短系列 HG Short series PN16

单位 Unit: mm

尺寸 Nominal Diameter	L	d	D2	D1	D	b	f	n-φd1	H	h	H1	W	Ra	Rb	A	B	K×K
15 1/2"	108	15	45	65	95	16	2	4-14	55	9	87	140	3.0	3.5	36	50	9X9
20 3/4"	117	20	58	75	105	18	2	4-14	60	9	92	140	3.0	3.5	36	50	9X9
25 1"	127	25	68	85	115	18	2	4-14	67	11	102	170	3.0	3.5	42	50	11X11
32 1-1/4"	140	32	78	100	140	18	2	4-18	76	11	111	170	3.0	3.5	42	50	11X11
40 1-1/2"	165	40	88	110	150	18	2	4-18	85	14	123	200	3.5	4.5	50	70	14X14
50 2"	178	50	102	125	165	18	2	4-18	93	14	131	200	3.5	4.5	50	70	14X14
65 2-1/2"	190	65	122	145	185	18	2	8-18	113	17	157	300	4.5	5.5	70	102	17X17
80 3"	203	80	138	160	200	20	2	8-18	126	17	170	300	4.5	5.5	70	102	17X17
100 4"	229	100	158	180	220	20	2	8-18	141	17	185	300	4.5	5.5	70	102	17X17
125 5"	356	125	188	210	250	22	2	8-22	170	25	255	650	5.5	6.5	102	125	22X22
150 6"	394	150	212	240	285	22	2	8-22	192	30	277	800	5.5	6.5	102	125	27X27
200 8"	457	200	268	295	340	24	2	8-22	234	35	280	300	5.5	6.5	102	125	27X27

尺寸列表 Dimensions

G21 化工部长系列 HG Long series PN16

单位 Unit: mm

尺寸 Nominal Diameter	L	d	D2	D1	D	b	f	n-φd1	H	h	H1	W	Ra	Rb	A	B	K×K
15 1/2"	130	15	45	65	95	16	2	4-14	55	9	87	140	3.0	3.5	36	50	9X9
20 3/4"	140	20	58	75	105	18	2	4-14	60	9	92	140	3.0	3.5	36	50	9X9
25 1"	150/140	25	68	85	115	18	2	4-14	67	11	102	170	3.0	3.5	42	50	11X11
32 1-1/4"	165	32	78	100	140	18	2	4-18	76	11	111	170	3.0	3.5	42	50	11X11
40 1-1/2"	165	40	88	110	150	18	2	4-18	85	14	123	200	3.5	4.5	50	70	14X14
50 2"	203	50	102	125	165	18	2	4-18	93	14	131	200	3.5	4.5	50	70	14X14
65 2-1/2"	222	65	122	145	185	18	2	8-18	113	17	157	300	4.5	5.5	70	102	17X17
80 3"	241	80	138	160	200	20	2	8-18	126	17	170	300	4.5	5.5	70	102	17X17
100 4"	305	100	158	180	220	20	2	8-18	141	17	185	300	4.5	5.5	70	102	17X17
125 5"	320	125	188	210	250	22	2	8-22	170	25	255	650	5.5	6.5	102	125	22X22
150 6"	360	150	212	240	285	22	2	8-22	192	30	277	800	5.5	6.5	102	125	27X27
200 8"	400	200	268	295	340	24	2	12-22	234	35	280	300	5.5	6.5	102	125	27X27

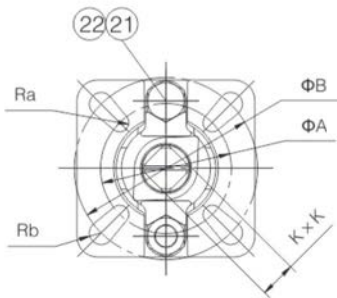
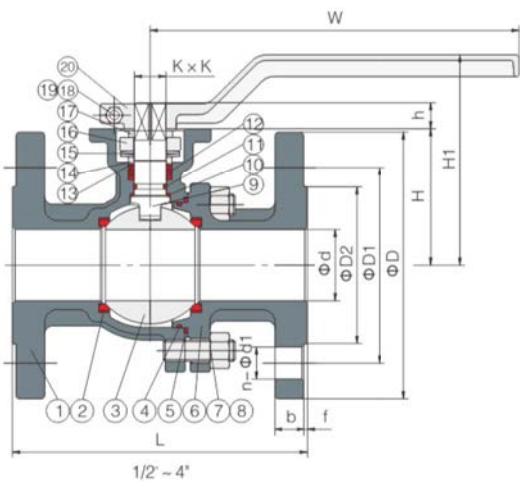


WQ-A2FH(NEW)



特点 Features

全通径 Full port, 1/2"~12" (DN15~DN300)  
工作压力 W.P.: CLASS 150/300  
工作温度 W.T.: -20°C~180°C  
精密铸造 Investment casting  
防静电装置 (可选) Anti-static device (option)  
带锁手柄 Locking device handle  
ISO5211直装高平台设计 ISO 5211 Direct mounting pad  
API 607 防火结构 (可选) API 607 Fire safe (option)  
自动化装置 (可选) Automation accessories (option)  
设计标准 Design: ASME B16.34, API608, API6D  
法兰标准 Flange dimension: ASME B16.5  
结构长度 Face to face: ASME B16.10  
检验 & 测试 Inspection & testing: API 598



材料表 Material List

序号No.	零件 PARTS	材料 MATERIAL		
		WCB	CF8	CF8M
1	阀体 BODY	WCB	CF8	CF8M
2	阀座 SEAT	PTFE		
3	球体 BALL	CF8	CF8	CF8M
4	O 形圈 O-RING	FPM		
5	垫片 GASKET	PTFE		
6	阀盖 BONNET	WCB	CF8	CF8M
7	螺栓 BOLT	304		
8	螺母 NUT	304		
9	阀杆 STEM	304	304	316
10	阀杆垫圈 STEM WASHER	PTFE+25% GF		
11	O 形圈 O-RING	FPM		
12	填料 PACKING	PTFE		
13	耐磨垫圈 WEAR WASHER	PTFE+25% GF		
14	填料盖 GLAND	304		
15	碟形弹簧 DISC SPRING	304		
16	压盖法兰 GLAND FLANGE	CF8		
17	STOPPER	304		
18	六角螺栓 HEX SOCKET BOLT	304		
19	螺母 NUT	304		
20	手柄 HANDLE	WCB/CF8		
21	螺栓 BOLT	304		
22	螺母 NUT	304		

尺寸 Dimensions CLASS 150

Unit: mm

公称直径 Nominal Diameter		L	d	D2	D1	D	b	f	n-Φd1	H	h	H1	W	Ra	Rb	A	B	K×K
15	1/2"	108	15	35	60.3	90	8	2	4-16	55	9	87	140	3.0	3.5	36	50	9X9
20	3/4"	117	20	43	69.9	100	8.9	2	4-16	60	9	92	140	3.0	3.5	36	50	9X9
25	1"	127	25	51	79.4	110	9.6	2	4-16	67	11	102	170	3.0	3.5	42	50	11X11
32	1-1/4"	140	32	63.5	88.9	115	11.2	2	4-16	76	11	111	170	3.0	3.5	42	50	11X11
40	1-1/2"	165	40	73	98.4	125	12.7	2	4-16	85	14	123	200	3.5	4.5	50	70	14X14
50	2"	178	50	92	120.7	150	14.3	2	4-19	93	14	131	200	3.5	4.5	50	70	14X14
65	2-1/2"	190	65	105	139.7	180	15.9	2	4-19	113	17	157	300	4.5	5.5	70	102	17X17
80	3"	203	80	127	152.4	190	17.5	2	4-19	126	17	170	300	4.5	5.5	70	102	17X17
100	4"	229	100	157	190.5	230	22.3	2	8-19	141	17	185	300	4.5	5.5	70	102	17X17
125	5"	356	125	185	216	255	22.3	2	8-22	170	25	255	650	5.5	6.5	102	125	22X22
150	6"	394	150	216	241.3	280	23.9	2	8-22	192	30	277	800	5.5	6.5	102	125	27X27
200	8"	457	200	270	298.5	345	27	2	8-22	234	35	280	300	5.5	6.5	102	125	27X27

尺寸 Dimensions CLASS 300

Unit: mm

公称直径 Nominal Diameter		L	d	D2	D1	D	b	f	n-Φd1	H	h	H1	W	Ra	Rb	A	B	K×K
15	1/2"	140	15	35	66.7	95	12.7	2	4-16	55	9	87	140	3.0	3.5	36	50	9X9
20	3/4"	152	20	43	82.6	115	14.3	2	4-19	60	9	92	140	3.0	3.5	36	50	9X9
25	1"	165	25	51	88.9	125	15.9	2	4-19	67	11	102	170	3.0	3.5	42	50	11X11
32	1-1/4"	178	32	63.5	98.4	135	17.5	2	4-19	76	11	111	170	3.0	3.5	42	50	11X11
40	1-1/2"	190	40	73	114.3	155	19.1	2	4-22	85	14	123	200	3.5	4.5	50	70	14X14
50	2"	216	50	92	127	165	20.7	2	8-19	93	14	131	200	3.5	4.5	50	70	14X14
65	2-1/2"	241	65	105	149.2	190	23.9	2	8-22	113	17	157	300	4.5	5.5	70	102	17X17
80	3"	282	80	127	168.3	210	27	2	8-22	126	17	170	300	4.5	5.5	70	102	17X17
100	4"	305	100	157	200	255	30.2	2	8-22	141	22	226	650	5.5	6.5	102	125	22X22
125	5"	381	125	185	216	280	33.4	2	8-22	170	25	255	650	5.5	6.5	102	125	22X22
150	6"	403	150	216	269.9	320	35	2	12-22	192	30	277	800	5.5	6.5	102	125	27X27
200	8"	502	200	269.9	330.2	380	39.7	2	12-25	234	35	280	300	5.5	6.5	102	125	27X27

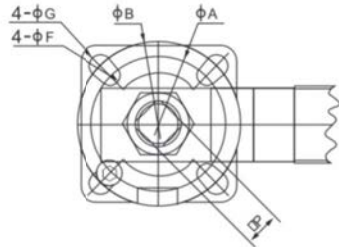
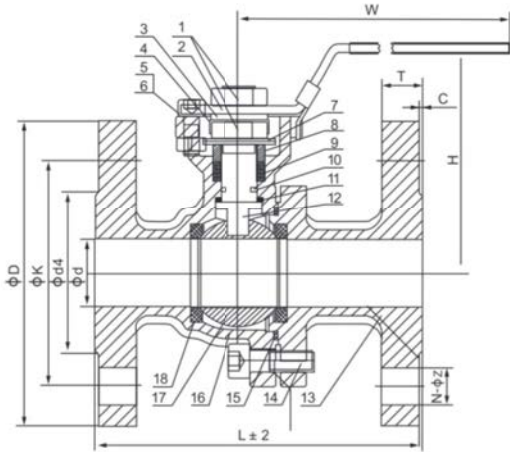


2PC DIN HIGH PLATFORM  
FLANGE VALVE PN16  
2PC 德标法兰高平台球阀PN16



NTA VALVE

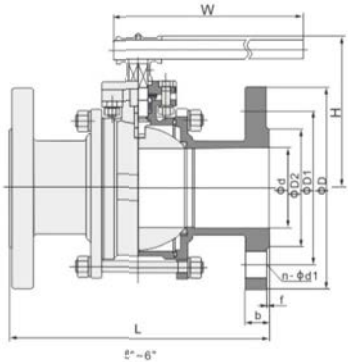
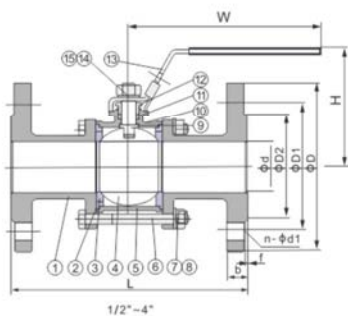
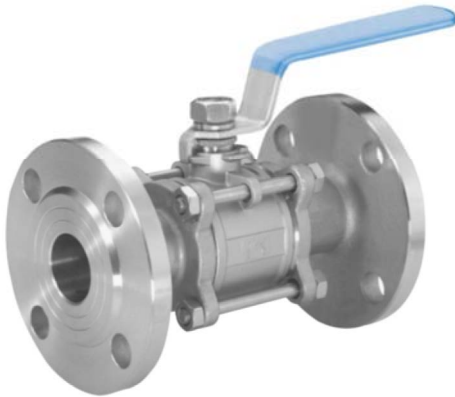
3-PC BALL VALVE FLANGE  
DIRECT MOUNTING PAD  
三片式高平台法兰球阀



标准规范 Applicable Standards	
设计制造 Design	DIN3357
平台 Actuated Connecting	ISO5211
结构长度 FACE to FACE	DIN3202-F4
连接法兰 End Flange	DIN2633/EN1092-1
试验 Testing	DIN3230/EN12266

	1/2"	3/4"	1"	1 1/4"	1 1/2"	2"	2 1/2"	3"	4"
d	15	20	25	32	38	49	65	80	100
L	115	120	125	130	140	150	170	180	190
T	14	16	16	16	16	18	18	20	20
C	2	2	2	2	2	2	2	2	2
D	95	105	115	140	150	165	185	200	220
K	65	75	85	100	110	125	145	160	180
d4	45	58	68	78	88	102	122	138	158
N-Z	4-14	4-14	4-14	4-18	4-18	4-18	4-18	8-18	8-18
H	75	80	90	100	120	130	150	160	185
W	125	125	155	155	185	185	260	260	300
ISO5211	A	36	36	42	42	50	50	70	70
	B	42	42	50	50	70	70	102	102
	F	5.5	5.5	6	6	7	7	9	9
	G	6	6	7	7	9	9	11	11
	P	9	9	11	11	14	14	17	19
重量 Weight									

序号 NO.	零件名称 PART NAME	材料 MATERIAL
1	螺母 Nut	304/316
2	手柄 Handle	304/316
3	垫片 Washer	304/316
4	防松盖 Anti Loosing Cap	304/316
5	内六角螺钉 Hex Screws	304/316
6	螺母 Nut	304/316
7	蝶形弹簧 Disc Spring	304/316
8	填料压盖 Gland	304/316
9	填料 Packing	PTFE
10	O型圈 O-Rings	Viton
11	止推垫片 Thrust Gasket	PTFE
12	阀杆 Stem	304/316
13	阀盖 Bonnet	CF8/CF8M
14	内六角螺钉 Hex Screws	304/316
15	密封垫 Gasket	PTFE
16	阀体 Body	CF8/CF8M
17	球体 Ball	304/316
18	阀座 Seat	PTFE



- 全通径 Full port, 1/2"~6" (DN15~DN150)
- 阀体工作压力 Body W. P.: 1000WOG (PN63)
- 法兰端工作压力 Flange end W. P.: PN16/40, CLASS 150/300
- 工作温度 W. T.: -20°C~180°C
- 精密铸造 Investment casting
- 阀杆防爆出装置设计 Blow-out proof stem
- ISO5211直装高平台设计 (可选) ISO5211 Direct mounting pad (optic)
- 手柄带锁装置 (可选) Locking device handle (option)

F3B国标GB PN16  
- 设计标准 Design: GB/T 12237  
- 法兰标准 Flange dimension: JB/T 79. 1  
- 检验 & 测试 Inspection&testing: GB/T 13927, JB/T9092

F3C美标ANSI CLASS 150/300  
- 设计标准 Design: ASME B16. 34  
- 法兰标准 Flange dimension: ASME B16. 5  
- 检验 & 测试 Inspection&testing: API 598

F3D德标DIN PN16/40  
- 设计标准 Design: EN1983, EN12516-1  
- 法兰标准 Flange dimension: DIN 2543~2545

EN1092-1 PN16/40  
- 结构长度 Face to face: DIN 3202-F1, EN 558-1  
- 检验 & 测试 Inspection&testing: DIN 3230, EN12266-1

材料列表 Material List (1/2"~4")

序号 NO.	零件名称 PART NAME	材质 MATERIAL		
1	阀盖 Bonnet	WCB	CF8	CF8M
2	垫片 Gasket	PTFE		
3	阀座 Seat	PTFE		
4	球体 Ball	CF8	CF8	CF8M
5	阀体 Body	WCB	CF8	CF8M
6	螺栓 Bolt	304		
7	弹垫 Spring Washer	304		
8	螺母 Nut	304		
9	阀杆 Stem	304	304	316
10	阀杆垫圈 Stem Washer	PTFE		
11	填料 Packing	PTFE		
12	压盖 Gland	304		
13	手柄 Handle	304+PVC		
14	弹垫 Spring Washer	304		
15	螺母 Nut	304		

尺寸列表 Dimensions P3B国标GB PN16

尺寸 Nominal Diameter		L	d	D2	D1	D	b	f	n- φ d1	H	W
15	1/2"	130	15	45	65	95	14	2	4-14	86	120
20	3/4"	150	20	55	75	105	14	2	4-14	92	130
25	1"	160	25	65	85	115	14	2	4-14	98	160
32	1-1/4"	180	32	78	100	135	16	2	4-18	116	180
40	1-1/2"	200	40	85	110	145	16	3	4-18	120	200
50	2"	230	50	100	125	160	16	3	4-18	127	240
65	2-1/2"	290	65	120	145	180	18	3	4-18	138	260
80	3"	310	80	135	160	195	20	3	8-18	150	300
100	4"	350	100	155	180	215	20	3	8-18	168	350
125	5"	400	125	185	210	250	22	3	8-18	220	650
150	6"	480	150	210	240	285	22	3	8-22	245	800

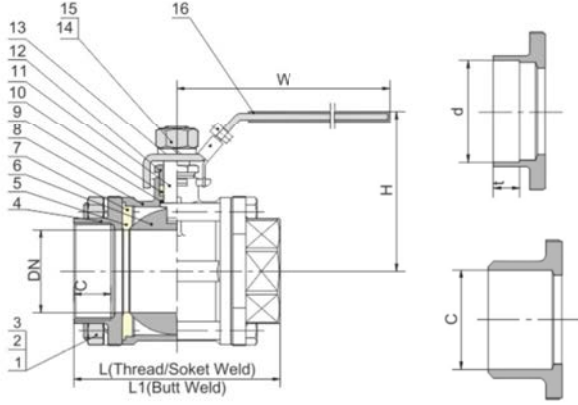
3-PC HARD  
SEAL BALL VALVE  
三片式硬密封球阀



NTA VALVE

3-PC FEMALE THREAD BALL VALVE  
三片式内螺纹球阀 (2000WOG)

Q11F-(40-64)C.P.R



特点 FEATURES

精密铸造阀体Investment Casting Body  
全通径Full Port  
各种螺纹设计Various Thread Standard Available

标准 STANDARD

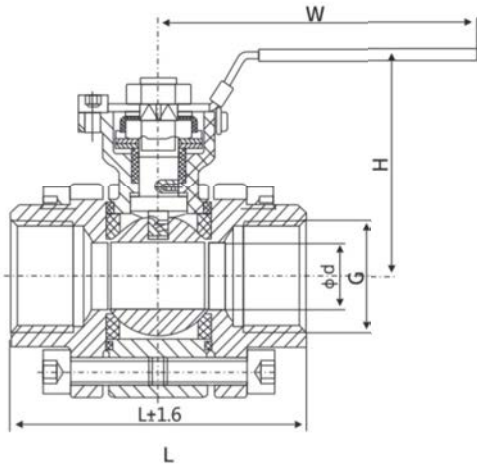
设计Design: ASME B16.34  
壁厚Wall Thickness: ASME B16.34,GB12224  
管螺纹Pipe Thread: ANSI B 1.20,1,BS 21/2779  
DIN 259/2999,ISO 228-1  
结构长度Face to Face: DIN 3202-M3  
检测和试验Inspection&Testing: API 598

主要零件材料Main components material

No.	Parts Name	Material	No.	Parts Name	Material
1	螺栓Bolt	CF8	10	阀杆Stem	SS304/SS316
2	弹垫Spring washer	CF8	11	填料Packing	PTFE
3	螺母Nut	CF8	12	填料压盖Packing Gland	SS304
4	阀盖End cap	CF8/CF8M	13	手柄Handle	SS304
5	阀座Seat	304+司太立	14	弹垫Spring washer	SS304
6	球体Ball	SS304+氮化	15	螺母Nut	304
7	密封垫Gasket	PTFE+C	16	皮套Handle sleeve	PLASTIC
8	止推垫Stem gasket	PTFE			
9	阀体Body	CF8/CF8M			

主要外形及连接尺寸 Main external and connection dimension

Size(Inch)	DN	L	L1	C	d	t	H	W	C
1/4"	10.5	55	55	10.5	14.3	10	45	100	11
3/8"	10.5	55	55	17.6	13	10	45	100	11
1/2"	15	60	65	21.8	16	10	60	100	13.5
3/4"	20	70	76	27.2	21	13	67	120	14.5
1"	25	80	86	33.9	26.5	13	72	120	17
1 1/4"	32	92	98	42.7	35	13	83	150	18.5
1 1/2"	38	105	115	48.8	41	13	93	170	20
2"	48	125	132	61.2	52	18	101	170	23
2 1/2"	64	160	164	74.0	66	18	125	210	29
3"	76	180	182	90.0	80.5	18	136	250	29.5
4"	98	225	235	115.6	104.6	20	165	300	33



性能规范 Specifications

公称压力: PN4.0, 6.4MPa  
强度试验压力: PT2.4, 3.8, 6.0, 9.6MPa  
低压气魔法试验压力: 0.6MPa  
适用介质: Q11F- (40-64) C水、油品、气  
适用温度: -29~180°C  
适用介质: Q11F-(40-64)P硝酸类  
Q11F-(40-64)R醋酸类

Nominal pressure: PN4.0, 6.4mpa  
Strength test pressure: PT2.4, 3.8, 6.0, 9.6mpa  
Low pressure air magic test pressure: 0.6mpa  
Applicable medium: Q11F- (40-64) C Water, oil, gas  
Applicable temperature: -29~180°C  
Suitable medium: Q11F-(40-64)P nitric acid class  
Q11F-(40-64)R Acetic acid class

主要零件材料 Materials of main parts

材料名称	Q11F-(40-64)C	Q11F-(40-64)P	Q11F-(40-64)R
阀体 Body	A216 WCB	A351 CF8	A351 CF8M
阀盖 Bonnet	A216 WCB	A351 CF8	A351 CF8M
球阀 Ball	A276 304/A276 316		
阀杆 Stem	2Cr13/A276 304/A276 316		
阀座 Seat	PTFE、RPTFE		
填料 Gland Packing	PTFE/柔性石墨 PTFE/Flexible Graphite		
压盖 Gland	A216 WCB	A351 CF8	A216 CF8
螺栓 Bolt	A193-B7	A193-B8M	A193-B7
螺母 Nut	A194-2H	A194-8	A194-2H

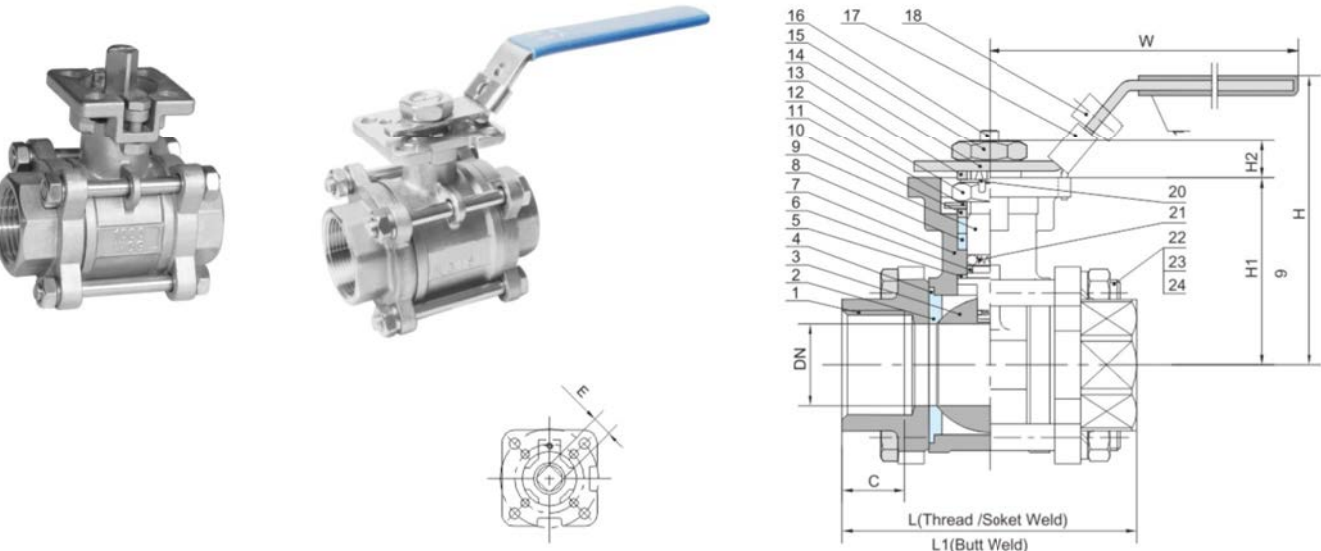
主要外形尺寸 Main outer size

DN(mm)	G	d	L	H	W
15	1/2"	15	76	55	105
20	3/4"	20	87	60	120
25	1"	25	95	70	140
32	1 1/4"	32	112	82	150
40	1 1/2"	40	125	90	170
50	2"	50	140	105	220



3-PN STAINLESS STEEL BALL VALVE FULL PORT  
1000WOG(PN69)ISO-DIRECT MOUNT PAD  
三片式高平台球阀

NTA®



特点FEATURES

精密铸造阀体Investment Casting Body  
带ISO5211直装平台ISO 5211 Direct Mounting Pad for Easy Automation  
各种螺纹设计Various Thread Standard Available  
手柄带锁选配Locking Device Available

标准STANDARD

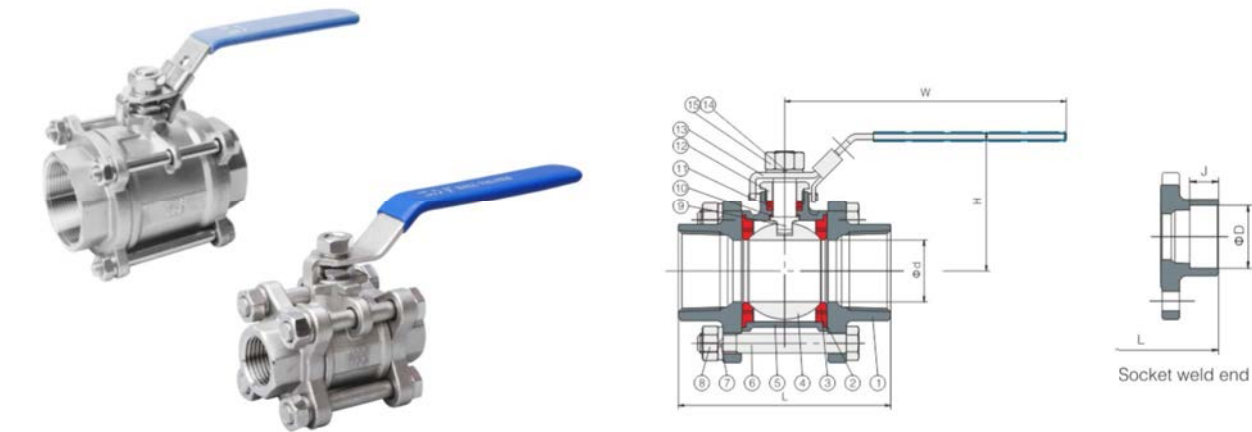
设计Design: ASME B16.34  
壁厚Wall Thickness: EN 12516-1, ASME B16.34  
管螺纹Pipe Thread: ASME B1.20.1, BS21/2779  
DIN 2999/259 ISO228-1  
JIS B0203 ISO 7/1  
承插端Socket Weld: ASME B16.11  
对焊端Butt-Weld: ASME B16.25(SCH 10,20,40)  
检测和试验Inspection&Testing: API 598,EN12266

主要外形及连接尺寸 Main external and connection dimension

Size(Inch)	DN	L(OTH)	L(DIN)	L1	A	B	C	d	t	E	H	H1	H2	W	ISO 5211
1/4"	12	60	60	70	12.5	18	12	14.3	10	9	58	31	7.5	120	F03/F04
3/8"	12	60	60	70	12.5	18	12	17.6	10	9	58	31	7.5	120	F03/F04
1/2"	15	70	75	70	16	22.5	15	21.8	10	9	67	40	8	120	F03/F04
3/4"	20	75	80	79	20	27	15.5	27.2	13	9	73	44	8	120	F03/F04
1"	25	90	90	87	26	34.5	18	33.9	13	11	88	54.5	10	150	F04/F05
1 1/4"	32	105	110	103	32	43	20	42.7	13	11	95	58.5	10	150	F04/F05
1 1/2"	40	115	120	108	38	49	23	48.8	13	14	107.5	68.5	14	185	F05/F07
2"	50	135	140	129	50	62	25	61.2	18	14	118.5	76.5	14	185	F05/F07
2 1/2"	65	165	185	168	65	76.5	32	74.0	18	17	168	96	16	250	F07/F10
3"	80	185	206	220	80	92	35	90.0	18	17	178	108	16	250	F07/F10
4"	100	225	240	270	100	115.5	36	115.6	20	19	198	128	18	310	F07/F10

3-PC STAINLESS STEEL BALL VALVE  
1000WOG  
三片式经济型球阀

NTA VALVE



特点FEATURES

精密铸造阀体Investment Casting Body  
全通径Full Port  
各种螺纹设计Various Thread Standard Available  
手柄带锁选配Locking Device Available

标准STANDARD

设计Design: ASME B16.34  
管螺纹Pipe Thread: ANSI B 1.20,1,BS 21/2779  
DIN 259/2999,ISO 228-1  
结构长度Face to Face: DIN 3202-M3  
检测和试验Inspection&Testing: API 598

主要零件材料 Main components material

No.	Parts Name	Material	No.	Parts Name	Material
1	阀盖End cap	CF8/CF8M	10	阀杆 Stem	SS304/SS316
2	密封垫Gasket	PTFE	11	填料Packing	PTFE
3	阀座 Seat	PTFE/RPTFE	12	填料压盖Packing Gland	SS304
4	球体 Ball	SS304/SS316	13	手柄Handle	SS304
5	阀体 Body	CF8/CF8M	14	弹簧Spring washer	SS304
6	螺栓Bolt	CF8/CF8M	15	螺母Nut	ASTM A194 B8
7	止推垫Stem gasket	PTFE			
8	螺母Nut	CF8/CF8M			
9	弹簧Spring washer	CF8/CF8M			

主要外形及连接尺寸 Main external and connection dimension

Size(Inch)	DN	L	d	H	W	螺纹长度 C
1/4"	10.5	62	14.3	45	91	11
3/8"	10.5	63	13	45	91	11
1/2"	15	63	16	52	106	14.5
3/4"	20	71	21	64	110	17.5
1"	25	82	26.5	65	127	19.5
1 1/4"	32	95	35	74	148	19.5
1 1/2"	38	103	41	82	165	21
2"	48	125	52	98	174	25
2 1/2"	64	160	66	125	240	29
3"	76	192	80.5	136	240	29.5
4"	98	248	104.6	165	300	33

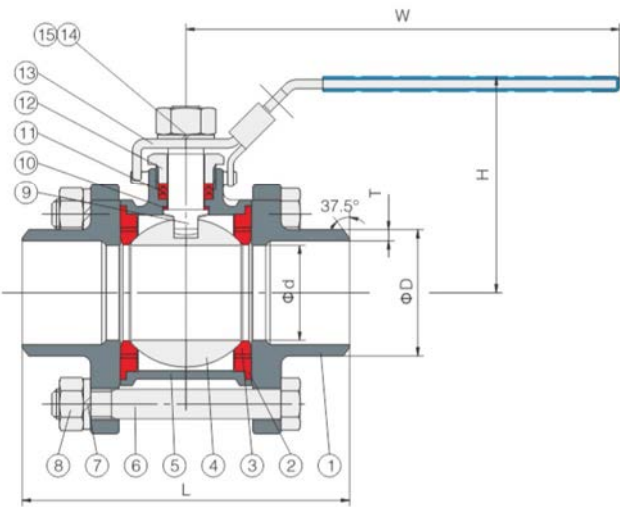


特点 Features

全通径 Full port, 1/4"~6" (DN6~DN150)  
工作压力 W.P.: 1000WOG (PN63)  
工作温度 W.T.: -20°C~180°C  
精密铸造 Investment casting  
手柄带锁装置(可选) Locking device handle (option)  
ISO5211直装高平台设计(可选) ISO5211 Direct mounting pad (option)  
对焊连接标准 Butt weld type: ASME B16.25 & DIN3239 part1

材料表 Material List

序号No.	零件 PARTS	材料 MATERIAL		
1	阀盖 BONNET	WCB	CF8	CF8M
2	垫片 GASKET	PTFE		
3	阀座 SEAT	PTFE		
4	球体 BALL	CF8	CF8	CF8M
5	阀体 BODY	WCB	CF8	CF8M
6	螺栓 BOLT	304		
7	弹簧垫圈 SPRING WASHER	304		
8	螺母 NUT	304		
9	阀杆 STEM	304	304	316
10	阀杆垫圈 STEM WASHER	PTFE		
11	填料 PACKING	PTFE		
12	填料盖 GLAND	304		
13	手柄 HANDLE	304+PVC		
14	弹簧垫圈 SPRING WASHER	304		
15	螺母 NUT	304		



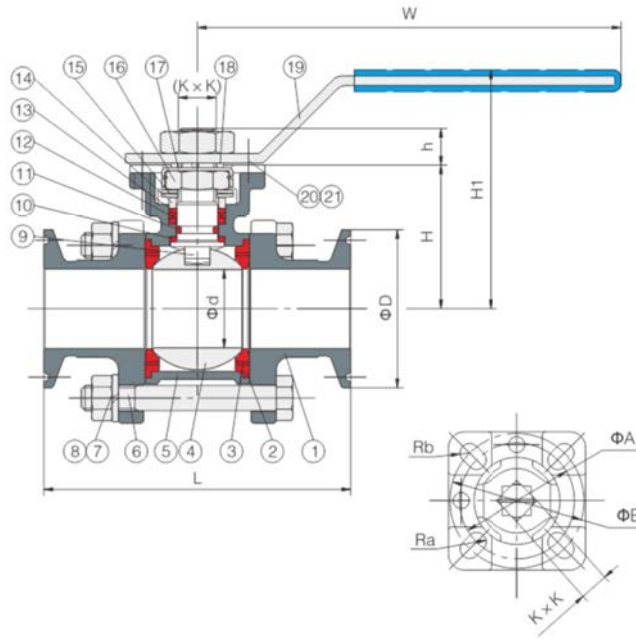
尺寸 Dimensions

Unit: mm

尺寸 SIZE	d	L	D	T	H	W
1/4"	DN6	12	64	14.5	2.25	46
3/8"	DN10	12	64	18	2.75	46
1/2"	DN15	15	67	23	3.0	53
3/4"	DN20	20	76	27	3.0	64
1"	DN25	25	90	34	3.5	66
1-1/4"	DN32	32	98	41	3.7	72
1-1/2"	DN40	38	110	47	4.0	87
2"	DN50	49	134	61	4.0	98
2-1/2"	DN65	65	180	74	4.5	122
3"	DN80	80	205	92	5.0	133
4"	DN100	100	260	114.5	6.0	156



全包密封圈



特点 Features

全通径 Full port, 1/2"~4" (DN15~DN100)  
工作压力 W.P.: 1000WOG (PN63)  
工作温度 W.T.: -20°C~180°C  
精密铸造 Investment casting  
双蝶形弹簧动负载设计 Live-loading design  
防静电装置(可选) Anti-static device (option)  
全包式阀座(可选) Cavity filled seats (option)  
手柄带锁装置(可选) Locking device handle (option)  
ISO5211直装高平台设计 ISO 5211 Direct mounting pad  
自动化装置(可选) Automation accessories (option)  
快装连接标准 Clamp end type: ASME BPE

材料表 Material List

序号No.	零件 PARTS	材料 MATERIAL		
1	阀盖 BONNET	CF8	CF8M	CF3M
2	垫片 GASKET	PTFE		
3	阀座 SEAT	PTFE		
4	球体 BALL	CF8	CF8M	CF3M
5	阀体 BODY	CF8	CF8M	CF3M
6	螺栓 BOLT	304		
7	弹簧垫圈 SPRING WASHER	304		
8	螺母 NUT	304		
9	阀杆 STEM	304	316	316L
10	阀杆垫圈 STEM WASHER	PTFE+25% GF		
11	O 形圈 O-RING	FPM		
12	填料 PACKING	PTFE		
13	耐磨垫圈 WEAR WASHER	PTFE+25% GF		
14	填料盖 GLAND	304		
15	碟形弹簧 DISC SPRING	304		
16	螺母 NUT	304		
17	CROWN WASHER	304		
18	垫圈 WASHER	304		
19	手柄 HANDLE	304+PVC		
20	六角螺栓 HEX SOCKET BOLT	304		
21	螺母 NUT	304		

尺寸 Dimensions

Unit: mm

尺寸 SIZE	d	D	L	H	h	KxK	A	B	Ra	Rb	W	H1
1/2"	DN15	15	50.5	97	38	9	9×9	36	42	3.0	3.0	125
3/4"	DN20	20	50.5	108	42	9	9×9	36	42	3.0	3.0	125
1"	DN25	25	50.5	114	48	9	9×9	36	42	3.0	3.0	125
1¼"	DN32	32	50.5	126	61	9	9×9	42	50	3.0	3.5	140
1½"	DN40	38	50.5	142	79	14	14×14	50	70	3.5	4.5	180
2"	DN50	49	64	157	88	14	14×14	70	102	4.5	5.5	180
2½"	DN65	65	77.5	178	108	17	17×17	70	102	4.5	5.5	260
3"	DN80	80	91	202	130	17	17×17	70	102	4.5	5.5	260



3-WAY BALL VALVE THREAD END  
DIRECT MOUNTING PAD  
三通高平台螺纹球阀

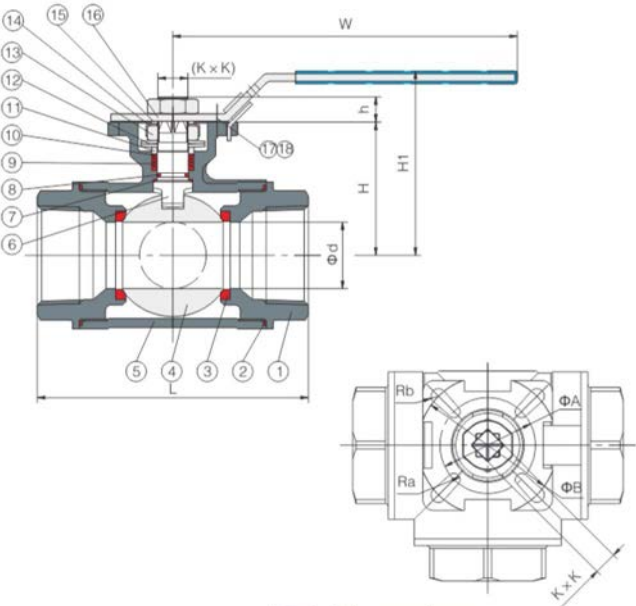


特点 Features

缩径 T型 / L型 Reduced port T port / L port, 1/4"~3" (DN6~DN80)  
工作压力 W.P.: 1000WOG (PN63)  
工作温度 W.T.: -20°C~180°C  
精密铸造 Investment casting  
防静电装置 (可选) Anti-static device (option)  
4个阀座设计 There are four seats  
360° 旋转手柄 360° Rotary handle  
手柄带锁装置 (可选) Locking device handle (option)  
ISO5211直装高平台设计 ISO 5211 Direct mounting pad  
自动化装置 (可选) Automation accessories (option)  
螺纹连接标准 Thread type: ASME B1.20.1 (NPT),  
DIN 259 / DIN 2999, BS 21,  
ISO 288-1, ISO 7-1

材料表 Material List

序号No.	零件 PARTS	材料 MATERIAL		
1	阀盖 BONNET	WCB	CF8	CF8M
2	垫片 GASKET	PTFE		
3	阀座 SEAT	PTFE		
4	球体 BALL	CF8	CF8	CF8M
5	阀体 BODY	WCB	CF8	CF8M
6	阀杆 STEM	304	304	316
7	阀杆垫圈 STEM WASHER	PTFE+25% GF		
8	O 形圈 O-RING	FPM		
9	填料 PACKING	PTFE		
10	耐磨垫圈 WEAR WASHER	PTFE+25% GF		
11	填料盖 GLAND	304		
12	碟形弹簧 DISC SPRING	304		
13	螺母 NUT	304		
14	CROWN WASHER	304		
15	垫圈 WASHER	304		
16	手柄 HANDLE	304+PVC		
17	六角螺栓 HEX SOCKET BOLT	304		
18	螺母 NUT	304		

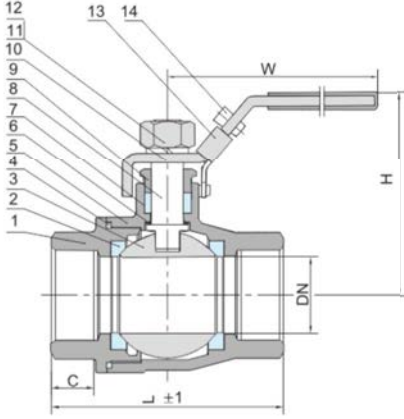


尺寸 Dimensions

Unit: mm

尺寸 SIZE		d	L	H	h	KxK	A	B	Ra	Rb	W	H1
1/4"	DN6	10	69	34	9	9×9	36	42	3.0	3.0	125	62
3/8"	DN10	10	69	34	9	9×9	36	42	3.0	3.0	125	62
1/2"	DN15	10	71	34	9	9×9	36	42	3.0	3.0	125	62
3/4"	DN20	15	79	42	9	9×9	36	42	3.0	3.0	125	70
1"	DN25	18	86	52	9	9×9	42	50	3.0	3.5	140	82
1-1/4"	DN32	25	110	58	11	11×11	42	50	3.0	3.5	140	88
1-1/2"	DN40	32	129	67	14	14×14	50	70	3.5	4.5	180	97
2"	DN50	40	143	78	14	14×14	50	70	3.5	4.5	180	108
2-1/2"	DN65	50	167	97	17	17×17	70	102	4.5	5.5	260	133
3"	DN80	65	237	112	17	17×17	70	102	4.5	5.5	260	148

2-PC STAINLESS STEEL BALL VALVE  
FULL PORT 2000PSI  
二片式2000WOG球阀



特点 FEATURES

防爆阀杆 Blow-out Proof Stem  
精密铸造阀体 Investment Casting Body  
球槽泄压孔 Pressure Balance Hole in Ball Slot  
全通径 Full Port  
各种螺纹设计 Various Thread Standard Available  
手柄带锁装置 Locking Device Available

标准 STANDARD

设计 Design: ASME B16.34  
壁厚 Wall Thickness: ASME B16.34, GB12224  
管螺纹 Pipe Thread: ANSI B 1.20, 1, BS 21/2779  
DIN 259/2999, ISO 228-1  
检测和试验 Inspection & Testing: API 598

主要零件材料 Main components material

No.	Parts Name	Material	No.	Parts Name	Material
1	阀盖 Bonnet	CF8/CF8M	8	阀杆 Stem	SS304
2	阀座 Seat	PTFE	9	填料压盖 Packing gland	SS304
3	球体 Ball	CF8/CF8M	10	手柄 Handle	SS304
4	阀体 Gasket	RPTFE	11	弹垫 Spring washer	SS304
5	阀体 Body	SS304/SS316	12	螺母 Handle nut	ASTM A194 B8
6	止推垫 Stem gasket	PTFE	13	锁块 Handle lock	SS304
7	填料 Packing	PTFE	14	插销 Pin	PLASTIC

主要外形及连接尺寸 Main external and connection dimension

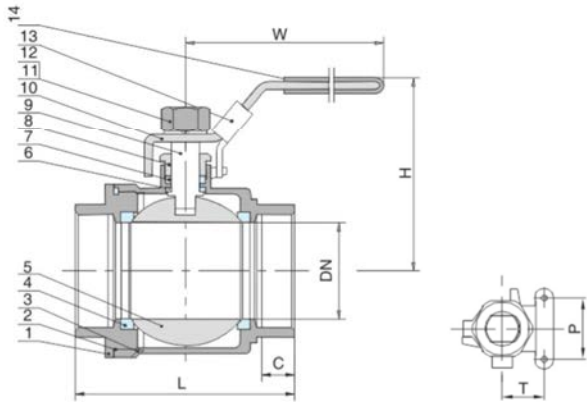
Size(Inch)	DN	L	W	H	C
1/4"	10.5	58	100	58	11
3/8"	10.5	58	100	58	12
1/2"	15	76	120	62.5	13.5
3/4"	20	81	126	70	14.5
1"	25	90.5	160	80.5	17.5
1 1/4"	32	110	160	85.5	19
1 1/2"	38	121	180	102	21
2"	48	140	180	110	23
2 1/2"	65	165	260	133	28
3"	80	190	260	143	30
4"	98	230	330	165	33

2-PC STAINLESS STEEL BALL VALVE FULL PORT  
1000WOG(PN138)  
二片式重型球阀



2-PC THREADED BALL VALVE  
WITH PLATFORM  
二片式带平台丝扣球阀

NTA VALVE



特点 FEATURES

精密铸造阀体Investment Casting Body  
全通径Full Port  
各种螺纹设计Various Thread Standard Available  
手柄带锁选配Locking Device Available

标准 STANDARD

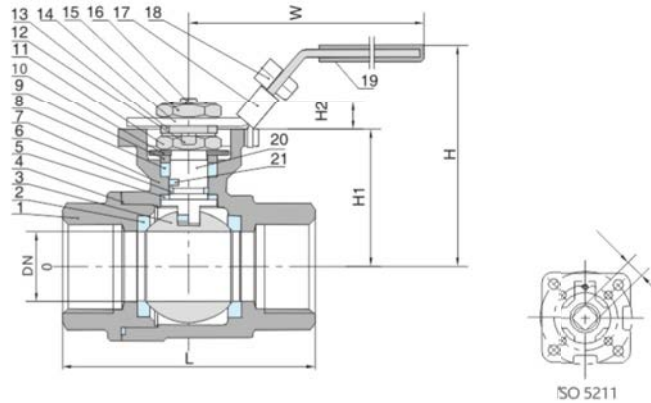
设计Design: GB 12237  
壁厚Wall Thickness: GB 12221  
管螺纹Pipe Thread: ANSI B 1.20.1, BS 21/2779  
DIN 259/2999, ISO 228-1  
检测和试验Inspection & Testing: JB 9092

主要零件材料 Main components material

No.	Parts Name	Material	No.	Parts Name	Material
1	阀盖 Bonnet	CF8/CF8M	8	填料压盖 Packing gland	SS304
2	密封垫 Gasket	PTFE	9	阀杆 Stem	SS304
3	阀体 Body	CF8/CF8M	10	手柄 Handle	SS304
4	阀座 Seat	RPTFE	11	弹垫 Spring washer	SS304
5	球体 Ball	SS304/SS316	12	螺母 Handle nut	ASTM A194 B8
6	止推垫 Stem gasket	PTFE	13	锁块 Handle lock	SS304
7	填料 Packing	PTFE	14	皮套 Handle sleeve	PLASTIC

主要外形及连接尺寸 Main external and connection dimension

Size(Inch)	DN	L	W	H	C	T	P
1/4"	12	52	91	49	10	12.7	28.5
3/8"	12	52	91	49	13	12.7	28.5
1/2"	15	62	106	52	14	12.7	28.5
3/4"	20	70	118	62	19	22.1	35
1"	25	82	127	68	21	22.1	35
1 1/4"	32	95	136	76	22	23.6	38.1
1 1/2"	38	104.5	171	86	22	23.6	38.1
2"	48	118	171	98	24	23.6	38.1
2 1/2"	65	162	215	129	26	35	55
3"	80	180	240	140	31	35	55
4"	98	220	317	153.5	37	35	55



特点 FEATURES

精密铸造阀体Investment Casting Body  
球槽泄压孔 Pressure Balance Hole in Ball Slot  
全通径Full Port  
各种螺纹设计Various Thread Standard Available  
手柄带锁选配Locking Device Available  
防静电装置Anti-static Device For Ball-Stem-Body

标准 STANDARD

设计Design: ASME B16.34  
壁厚Wall Thickness: ASME B16.34, GB12224  
管螺纹Pipe Thread: ANSI B 1.20.1, BS 21/2779  
DIN 259/2999, ISO 228-1  
结构长度Face to Face: DIN 3202-M3  
检测和试验Inspection & Testing: API 598

主要零件材料 Main components material

No.	Parts Name	Material	No.	Parts Name	Material
1	阀盖 End cap	CF8/CF8M	12	防松盖 Thrust washer	SS304
2	阀座 Seat	PTFE+15%FV	13	填料压盖 Packing gland	SS304
3	球体 Ball	SS304/SS316	14	手柄 Handle	SS304
4	密封垫 Gasket	PTFE	15	螺母 Handle nut	SS304
5	止推垫 Stem gasket	PTFE	16	定位杆 Stop Pin	SS304
6	O型圈 O-Ring	Viton	17	锁块 Handle lock	SS304
7	阀体 Body	CF8/CF8M	18	插销 Pin	PLASTIC
8	填料 Packing	PTFE	19	皮套 Handle sleeve	PLASTIC
9	填料压盖 Packing gland	SS304	20	阀杆 Stem	SS304/SS316
10	碟簧 Butterfly spring	SS304	21	防静电 Anti-static device	SS304
11	阀杆螺母 Stem Nut	SS304	22		

主要外形及连接尺寸 Main external and connection dimension

Size(Inch)	DN	L(OTH)	L(DIN)	W	E	H	H1	H2	ISO 5211
1/4"	12	62	60	110	9	57	30	7.5	F03/F04
3/8"	12	62	60	110	9	57	30	7.5	F03/F04
1/2"	15	62	75	110	9	65	38	8	F03/F04
3/4"	20	71	80	110	9	67	44	8	F03/F04
1"	25	85	90	130	11	80	55	10	F04/F05
1 1/4"	32	95	110	160	11	83	61	10	F04/F05
1 1/2"	38	106	120	185	14	99	71	14	F05/F07
2"	48	120	140	185	14	107	85	14	F05/F07
2 1/2"	65	144	185	250	17	165	107	18.5	F07/F10
3"	78	168	205	250	17	180	113	18.5	F07/F10
4"	98	203	240	315	19	200	135	18.5	F07/F10



2-PC DIN THREAD BALL VALVE  
2PC德标内螺纹球阀



NTA VALVE

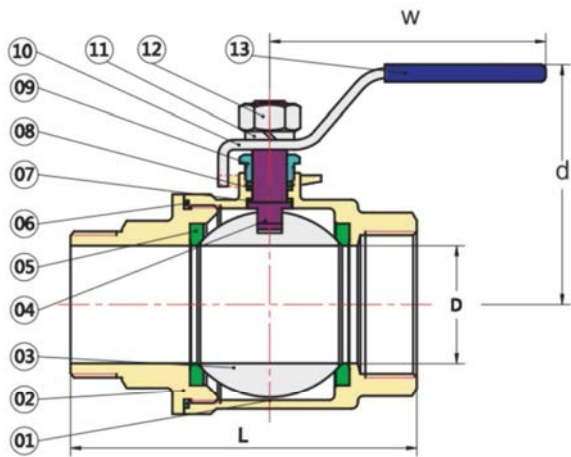
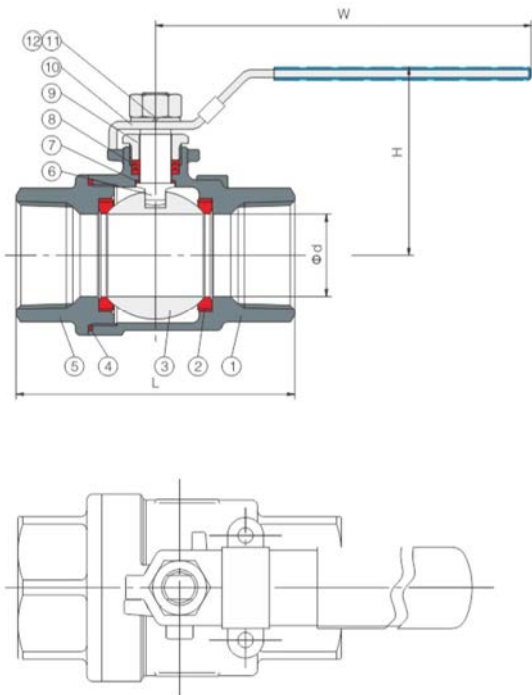
2-PC BALL VALVE THREAD END  
(FEMALE MALE)  
二片式内外螺纹球阀



特点 Features

设计制造Design:DIN3357  
全通径 Full port, 1/4"~4" (DN6~DN100)  
工作压力 W.P.: 1000WOG (PN63)  
工作温度 W.T.: -20°C~180°C  
精密铸造 Investment casting  
手柄带锁装置 (可选) Locking device handle (option)  
结构长度 Face to face: DIN3202-M3  
螺纹连接标准 Thread type: DIN 259 / DIN 2999, BS 21,

防爆阀杆/全通径BLOW-OUT PROOF STEM/FULL PORT  
适用温度范围TEMPERATURE RANGE:-20 to 280°C  
使用压力PRESSURE:PN63/1000WOG  
适用介质APPLICABLE MEDIA:水WATER、气GAS、油OIL  
设计制造DESIGN:GB/T-12224/ANSI B16.34  
螺纹标准THREAD:BSPT/BSP/NPT/DIN/JIS/RC/G  
检查与测试TEST:GB/T-13927/API598  
气压测试AIR TEST:0.8MPA



材料表 Material List

序号No.	零件 PARTS	材料 MATERIAL		
1	阀体 BODY	WCB	CF8	CF8M
2	阀座 SEAT	PTFE		
3	球体 BALL	CF8	CF8	CF8M
4	垫片 GASKET	PTFE		
5	阀盖 BONNET	WCB	CF8	CF8M
6	阀杆 STEM	304	304	316
7	阀杆垫圈 STEM WASHER	PTFE		
8	填料 PACKING	PTFE		
9	填料盖 GLAND	304		
10	手柄 HANDLE	304+PVC		
11	弹簧垫圈 SPRING WASHER	304		
12	螺母 NUT	304		

材质清单 MATERIALS LIST

NO.	零件名称 PART NAME	材质 MATERIALS LIST		
1	阀体 BODY	CF8M	CF8	WCB
2	阀盖 END CAP	CF8M	CF8	WCB
3	球 BALL	SS316	SS304	SS304
4	阀杆 STEM	SS316	SS304	SS304
5	阀座 SEAL	RTFE	RTFE	RTFE
6	线条 BODY SEAL	PTFE	PTFE	PTFE
7	杆密封 THRUST WASHER	PTFE	PTFE	PTFE
8	中头垫 STEM PACKING	PTFE	PTFE	PTFE
9	填料压套 GLAND	SS304	SS304	SS304
10	手柄 HANDLE	SS304	SS304	SS304
11	弹垫 STUD	A193 Gr.B8	A193 Gr.B8	A193 Gr.B8
12	螺帽 NUT	A194.Gr.8	A194.Gr.8	A194.Gr.8
13	胶套 HANDLE COVER	PLASTIC	PLASTIC	PLASTIC

尺寸 Dimensions

尺寸 SIZE		d	L	H	W
1/2"	DN15	15	75	55	120
3/4"	DN20	20	80	59	120
1"	DN25	25	90	66	145
1-1/4"	DN32	32	110	71	145
1-1/2"	DN40	38	120	82	190
2"	DN50	50	140	90	190
2-1/2"	DN65	65	185	122	240
3"	DN80	80	205	135	250
4"	DN100	100	240	156	300

内外螺纹外形尺寸 OUTER SIZE

SIZE	d	L	W	H
1/4"	12	68.5	91	48
3/8"	12	68.5	91	48
1/2"	15	66	106	50
3/4"	20	74.5	106	55
1"	25	88	110	63
1-1/4"	32	101	128	70
1-1/2"	38	110	148	75
2"	49	126	165	94

1-PC BALL VALVE THREAD END  
一片式内螺纹球阀



NTA VALVE

THREADED GATE VALVE  
GLOBE VALVE  
丝扣闸阀/截止阀

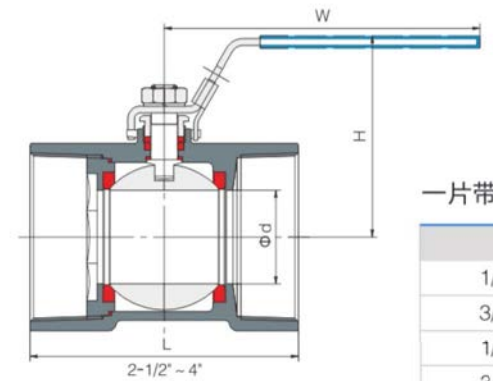
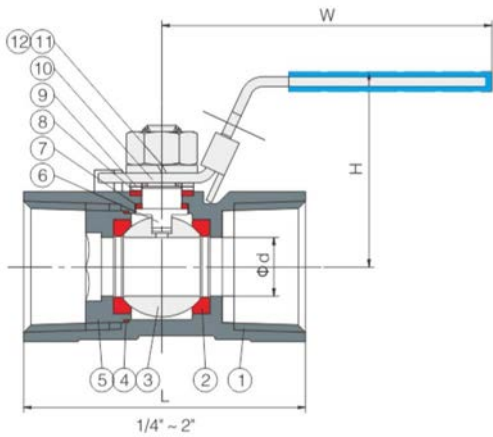


特点 Features

Reduced port, 1/4"~4" (DN6~DN100)  
W.P.: 1000WOG (PN63)  
W.T.: -20°C~180°C  
Investment casting  
Blow-out proof stem  
Thread type: ASME B1.20.1 (NPT),BSP BSPT  
DIN 259 / DIN 2999, BS 21,  
ISO 288-1, ISO 7-1

材料表 Material List

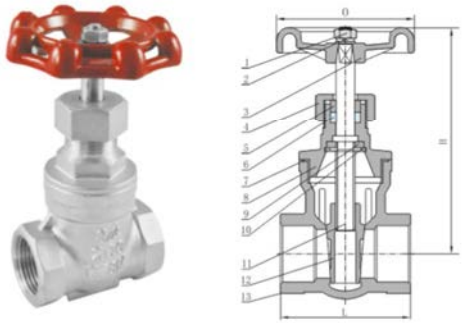
序号No.	零件 PARTS	材料 MATERIAL		
1	阀体 BODY	WCB	CF8	CF8M
2	阀座 SEAT	PTFE		
3	球体 BALL	CF8	CF8	CF8M
4	垫片 GASKET	PTFE		
5	阀盖 BONNET	WCB	CF8	CF8M
6	阀杆 STEM	304	304	316
7	阀杆垫圈 STEM WASHER	PTFE		
8	填料 PACKING	PTFE		
9	垫圈 WASHER	304		
10	手柄 HANDLE	304+PVC		
11	弹簧垫圈 SPRING WASHER	304		
12	螺母 NUT	304		



一片带锁球阀尺寸

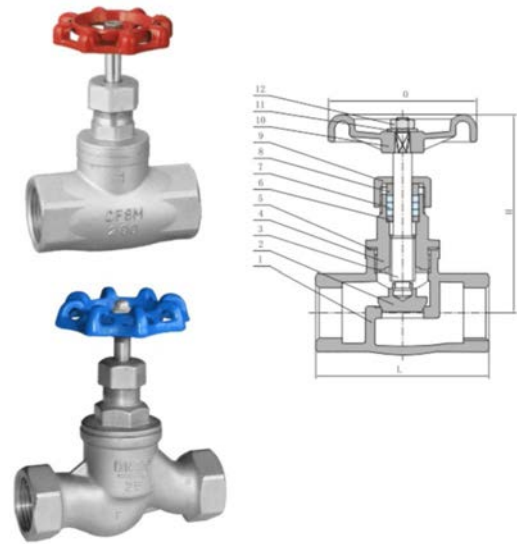
Unit: mm

尺寸 SIZE		d	L	H	W
1/4"	DN6	5	40.5	36	80
3/8"	DN10	7	43.5	38	80
1/2"	DN15	9	56	42	92
3/4"	DN20	12	60	46	97
1"	DN25	15	72	57	124
1-1/4"	DN32	20	77	54	124
1-1/2"	DN40	25	84	62	150
2"	DN50	32	98	69	150
2-1/2"	DN65	38	112	85	190
3"	DN80	49	132	96	220
4"	DN100	65	185	122	250



特点 FEATURES

设计制造Design:GB 12224  
螺纹端Pipe Thread : ASME B1.20.1,BS21/2779  
DIN 2999/259 ISO228/1  
精密铸造阀体Investment Casting Body  
金属密封Metal Sealing  
检测和试验Inspection&Testing : JB 9092



特点 FEATURES

设计制造Design:GB 12224  
螺纹端Pipe Thread : ASME B1.20.1,BS21/2779  
DIN 2999/259 ISO228/1  
精密铸造阀体Investment Casting Body  
金属密封Metal Sealing  
检测和试验Inspection&Testing : JB 9092

主要零件材料 Main components material

No.	Parts Name	Material	No.	Parts Name	Material
1	阀杆螺母 Stem Nut	ASTM A194-B8	8	井帽 Bonnet	CF8/CF8M
2	垫圈 Washer	SS304	9	垫圈 Washer	SS304
3	手柄Handle	Aluminium alloy	10	内卡簧 Snap Ring	SS304
4	锁紧螺母 Stop Nut	CF8	11	阀杆Stem	SS304/SS316
5	格兰 Gland	SS304	12	阀瓣 Disc	CF8/CF8M
6	密封垫Gasket	PTFE	13	阀体 Body	CF8/CF8M
7	填料Packing	PTFE	14		

主要外形及连接尺寸 Main external and connection dimension

Size(Inch)	L	H	O
1/2"	56	96	70
3/4"	62	102	70
1"	65	114	70
1 1/4"	78	132	70
1 1/2"	88	145	97
2"	98	170	97
2 1/2"	120	210	126
3"	130	237	126

主要零件材料 Main components material

No.	Parts Name	Material	No.	Parts Name	Material
1	阀体 Body	CF8/CF8M	7	填料Packing	PTFE
2	阀瓣 Disc	CF8/CF8M	8	填料压盖Packing Gland	SS304
3	阀杆Stem	SS304/SS316	9	填料压盖Packing Gland	CF8/CF8M
4	阀盖End cap	CF8/CF8M	10	手柄Handle	Aluminium alloy
5	垫圈Body Gasket	SS304	11	平垫Plain washer	ASTM A194 B8
6	垫圈 Washer	PTFE	12	螺母 Nut	SS304

主要外形及连接尺寸 Main external and connection dimension

Size(Inch)	L	H	O	KGS/PC
1/2"	60	89	65	0.35
3/4"	70	93	65	0.45
1"	80	100	72	0.65
1 1/4"	90	109	79	0.95
1 1/2"	105	129	98	1.39
2"	119	141	98	1.95

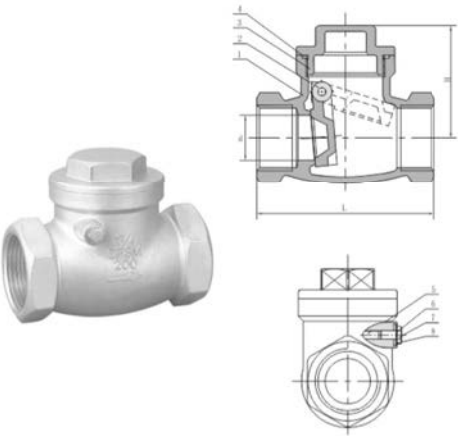


SWING/VERTICAL CHECK VALVE  
旋启式/立式止回阀



NTA VALVE

Y FILTER  
VENT  
Y型过滤器/排气阀



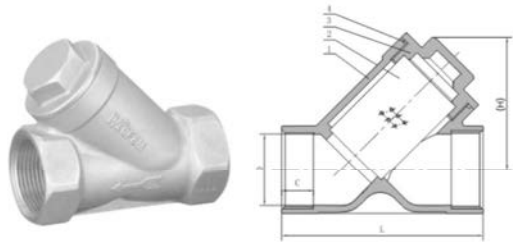
**特点 FEATURES**  
设计制造Design:GB 12224  
螺纹端Pipe Thread : ASME B1.20.1,BS21/2779  
DIN 2999/259 ISO228/1  
精密铸造阀体Investment Casting Body  
金属密封Metal Sealing  
检测和试验Inspection&Testing : JB 9092

主要零件材料 Main components material

No.	Parts Name	Material	No.	Parts Name	Material
1	阀体 Body	CF8/CF8M	6	垫圈 Washer	SS304
2	阀瓣 Disc	CF8/CF8M	7	螺栓 Bolt	ASTM A193 B8
3	阀盖End cap	CF8/CF8M	8	密封垫Gasket	PTFE
4	垫圈 Washer	PTFE	9		
5	圆柱销Cylindrical Pin	SS304	10		

主要外形及连接尺寸 Main external and connection dimension

Size(Inch)	L	H	d	KGS/PC
1/4"	56	36.5	10	
3/8"	56	36.5	10	
1/2"	63	40	15	
3/4"	78	49.5	20	0.23
1"	86	57	25	0.33
1 1/4"	100	61.5	32	0.465
1 1/2"	110	71	38	1.05
2"	130	77	47	1.4



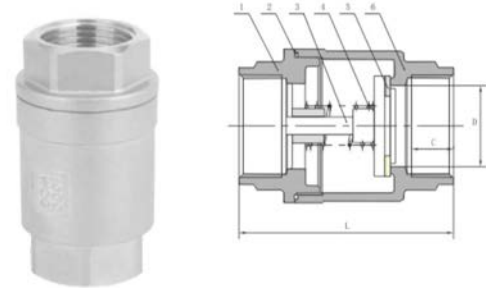
**特点 FEATURES**  
设计制造Design:GB 12224  
螺纹端Pipe Thread : ASME B1.20.1,BS21/2779  
DIN 2999/259 ISO228/1  
精密铸造阀体Investment Casting Body  
检测和试验Inspection&Testing : JB 9092

主要零件材料 Main components material

No.	Parts Name	Material
1	阀体 Body	CF8/CF8M
2	过滤网SCREEN	SS304/SS316
3	阀盖End cap	CF8/CF8M
4	密封垫Gasket	PTFE

主要外形及连接尺寸 Main external and connection dimension

Size(Inch)	DN	D	H	C	L
1/2"	15	17.5	44.7	14	61
3/4"	20	23	52.1	15	73
1"	25	29	65.7	17	87
1 1/4"	32	38	70	19	99
1 1/2"	38	43.5	79.5	19	137
2"	48	55	95.5	22	166
2 1/2"	65	66	125.5	25	197
3"	80	81.5	155	27	205
4"	100	106.5	205	35	240



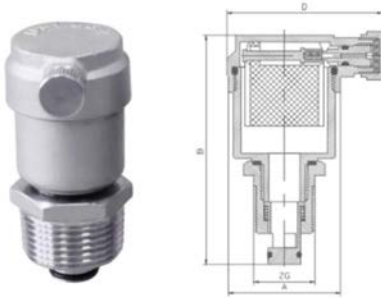
**特点FEATURES**  
设计制造Design:GB 12224  
螺纹端Pipe Thread : ASME B1.20.1,BS21/2779  
DIN 2999/259 ISO228/1  
精密铸造阀体Investment Casting Body  
软密封Soft Sealing  
检测和试验Inspection&Testing : JB 9092

主要零件材料 Main components material

No.	Parts Name	Material	No.	Parts Name	Material
1	阀体 Body	CF8/CF8M	5	阀座 Seat	VITON
2	密封垫Gasket	PTFE	6	阀盖End cap	CF8/CF8M
3	阀瓣 Disc	CF8/CF8M	7		
4	弹簧Spring	SS304	8		

主要外形及连接尺寸 Main external and connection dimension

Size(Inch)	DN	D	C	L
1/2"	15	15	10	59
3/4"	20	20	11	62
1"	25	25	11	73
1 1/4"	32	32	20	85
1 1/2"	40	38	22	99
2"	50	50	22	113



排气阀用于管道上的制高点或闭气地方。  
来排除管道内气体来疏通端端到在工作中  
正常运转。

The exhaust valve is used at the commanding height  
or closed air place on the pipeline. To remove the gas  
in the pipeline to clear the end to normal operation  
during work.

排气阀 Vent

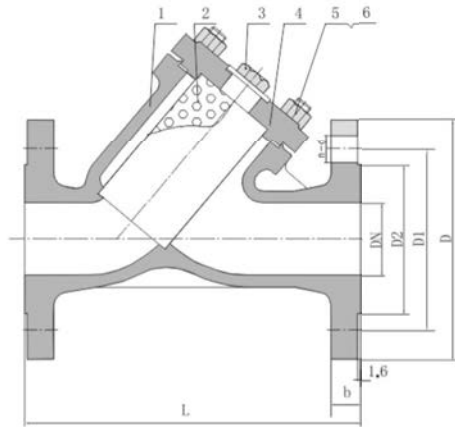
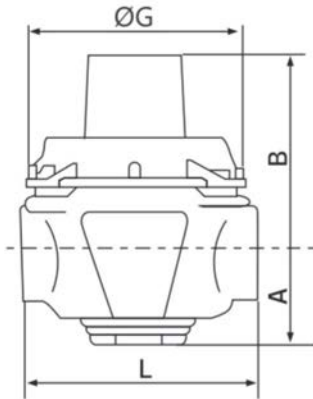
DN	A	B	ZG	D
15	38	78	ZG1/2"	53
20	38	78	ZG3/4"	53
25	38	79	ZG1"	53

YZ11X BRANCH PIPE  
PRESSURE REDUCING VALVE  
YZ11X支管减压阀



NTA VALVE

Y-TYPE STRAINER FLANGE  
END 150LB/300LB  
法兰Y型过滤器



安装使用说明 Installation instructions

在家用给水系统，减压阀通常安装在水表后面，以便保护其后所用水器具，如果有冰冻危险，则应注意采暖或放水排空。

In the domestic water supply system, the pressure reducing valve is usually installed behind the water meter to protect the subsequent water appliances. If there is a danger of freezing, attention should be paid to heating or draining.

主要零件材料 Main components material

零件名称	材质
阀体、阀盖、底盖	304
密封	NBR
阀瓣	304
调节螺丝	304
膜片	NBR编织夹层
弹簧	60si2mna镀镍
调节螺母	铜
膜片平垫	304

特点 FEATURES

复合铸造阀体Compound Casting Body  
金属密封Metal Sealing  
材料Material：CF8M/CF8/SS316/  
SS304/1.4408/1.4301  
最高工作温度Maximun Working Temperature：425℃

标准 STANDARD

设计Design：ASME B16.34,API 594  
壁厚Wall Thickness：ASME B16.34,EN12516-3  
结构长度Face to Face：ASME D16.10  
法兰端Flange End：ASME B16.5 CLASS 150/300  
检测和试验Inspection&Testing：API 598,EN12266

主要零件材料 Main components material

No.	Parts Name	Material	No.	Parts Name	Material
1	阀体 Body	CF8/CF8M	5	螺栓Bolt	ASTM A193 B8
2	过滤网 Screen	SS304/SS316	6	螺母 Nut	ASTM A194 B8
3	塞头 Plug	SS304/SS316			
4	阀盖 End cap	CF8/CF8M			

主要尺寸

公称通径DN ( mm)		尺寸 ( mm)				重量 ( kg)
mm	in	A	B	L	ØG	
15	1/2	33	77	76.5	62	1.2
20	3/4	33	77	76.5	62	1.2
25	1	37	87	85	69	1.4
32	1 1/4	44	92	98	69	1.7
40	1 1/2	50	97	102	65	2.3
50	2	56	127	117	75	3.3

主要外形及连接尺寸 Main external and connection dimension

Size(Inch)	DN	L	D		D1		D2	n-d		b	
			300LB	150LB	300LB	150LB		300LB	150LB	300LB	150LB
1/2"	15	165	95	89	66.5	60.5	35	4-16	4-16	14.3	11.2
3/4"	20	165	117	98	82.5	70	43	4-19	4-16	15.9	11.2
1"	25	190	124	108	89.0	79.5	51	4-19	4-16	17.5	12
1 1/4"	32	190	133	117	98.5	89	64	4-19	4-16	19.1	12.7
1 1/2"	40	229	156	127	114.5	98.5	73	4-22	4-16	20.7	14.6
2"	50	267	165	152	127.0	120.5	92	8-19	4-19	22.3	15.9
2 1/2"	65	292	190	178	149.0	139.5	05	8-22	4-19	25.4	17.5
3"	80	318	210	190	168.5	152.5	27	8-22	4-19	28.6	19.1
4"	100	356	254	229	200.0	190.5	57	8-22	8-19	31.8	23.9
5"	125	400	279	254	235.0	216	86	8-22	8-22	35.0	23.9
6"	150	445	318	279	270.0	241.5	216	12-22	8-22	36.6	25.4
8"	200	559	381	343	330.0	298.5	270	12-25	8-22	41.3	28.6
10"	250	622	444	406	387.5	362	324	16-29	12-25	47.7	30.2
12"	300	711	521	483	451.0	482	381	16-32	12-25	50.8	31.8