



POS Printer Driver V8.11

Installation Instruction Manual

一、Install the printed driver:

1、Download "Receipt Printer Driver V8.11" on the official website.

2、USB driver installation

(1) Select USB port and printer type

Install Receipt Printer Driver

You are using Windows 10 x64 OS.
Please select Windows 10 to install.

Select Windows OS

☐ Windows XP ☐ Windows Vista
☐ Windows 2003 ☐ Windows 8/8.1
☐ Windows 7 ☒ Windows 10
☐ Windows 11

Port Check
USB002

Printer Interface :

1. ☒ USB ☐ COM ☐ LAN ☐ BLE

Receipt printer

2. ☒ POS-80C ☐ POS-80
☐ POS-58C ☐ POS-58
☐ POS-76C ☐ POS-76

*Remarks: "C" means item with cutter

☐ Set Default Printer

Check Port
PrintSelftest
Install Driver
English

(2) Click Start Installation

Install Receipt Printer Driver

You are using Windows 10 x64 OS.
Please select Windows 10 to install.

Select Windows OS

☐ Windows XP ☐ Windows Vista
☐ Windows 2003 ☐ Windows 8/8.1
☐ Windows 7 ☒ Windows 10
☐ Windows 11

Port Check

USB002

Printer Interface :

☒ USB ☐ COM ☐ LAN ☐ BLE

Receipt printer

☒ POS-80C ☐ POS-80
☐ POS-58C ☐ POS-58
☐ POS-76C ☐ POS-76

***Remarks: "C" means item with cutter**

☐ Set Default Printer

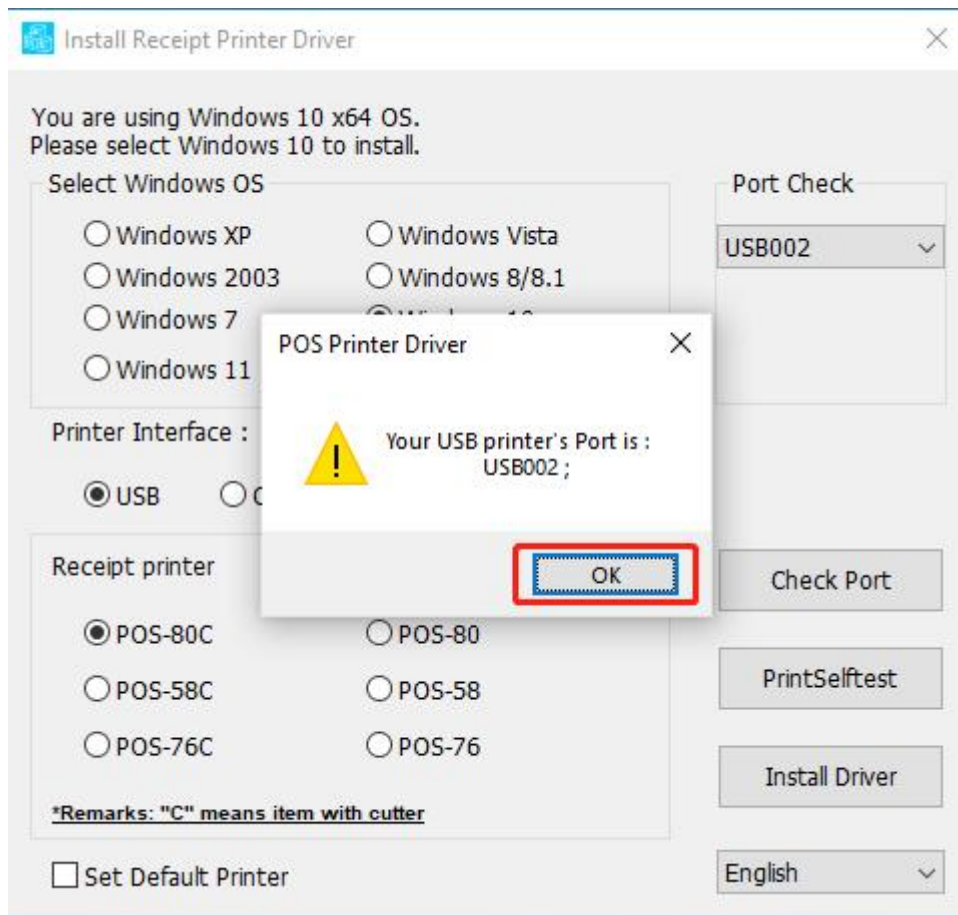
Check Port

PrintSelftest

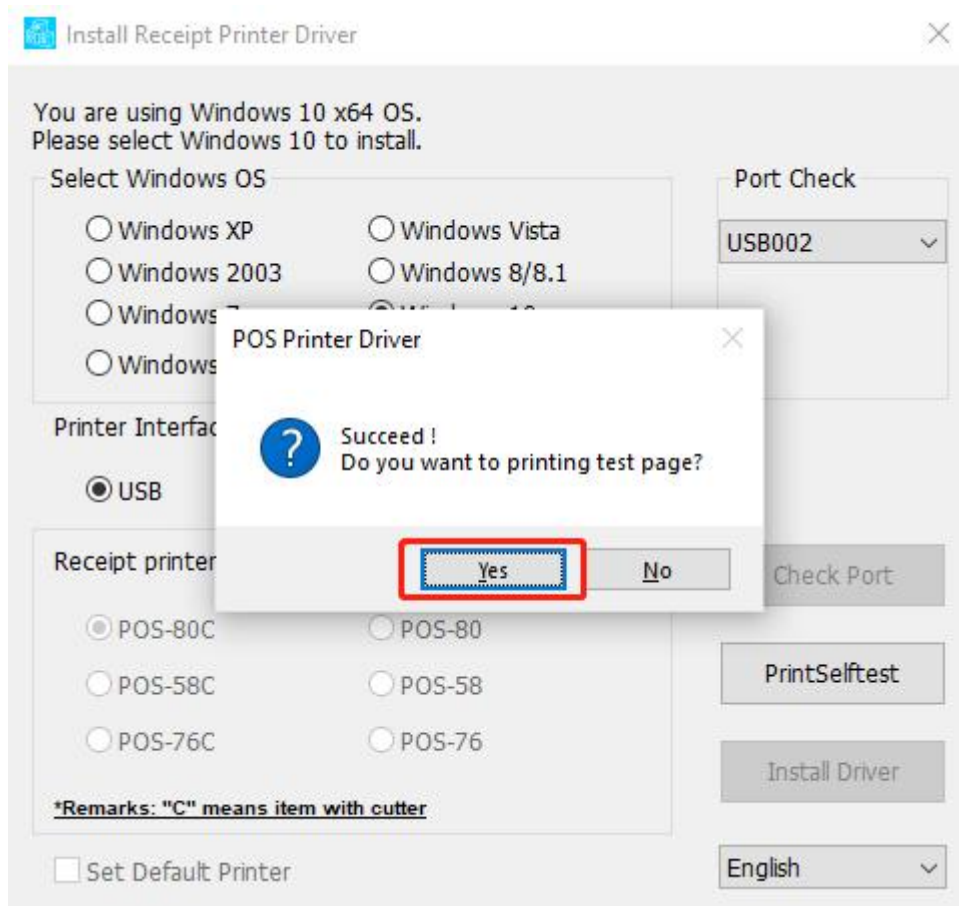
Install Driver

English

(3) Select OK



(4) Select YES to print the self page and check the printer driver name



(5) Installation is completed

3、Serial port driver installation

(1) Select Serial port and printer type

Install Receipt Printer Driver

You are using Windows 10 x64 OS.
Please select Windows 10 to install.

Select Windows OS

☐ Windows XP ☐ Windows Vista
☐ Windows 2003 ☐ Windows 8/8.1
☐ Windows 7 ☒ Windows 10
☐ Windows 11

Port Check

3. COM1

Printer Interface :

1. ☐ USB ☒ COM ☐ LAN ☐ BLE

19200

Receipt printer

2. ☒ POS-80C ☐ POS-80
☐ POS-58C ☐ POS-58
☐ POS-76C ☐ POS-76

*Remarks: "C" means item with cutter

☐ Set Default Printer

Check Port

PrintSelftest

Install Driver

English

(2) Click Start Installation

Install Receipt Printer Driver

You are using Windows 10 x64 OS.
Please select Windows 10 to install.

Select Windows OS

☐ Windows XP ☐ Windows Vista
☐ Windows 2003 ☐ Windows 8/8.1
☐ Windows 7 ☒ Windows 10
☐ Windows 11

Printer Interface :

☐ USB ☒ COM ☐ LAN ☐ BLE

Receipt printer

☒ POS-80C ☐ POS-80
☐ POS-58C ☐ POS-58
☐ POS-76C ☐ POS-76

***Remarks: "C" means item with cutter**

☐ Set Default Printer

Port Check

COM1

19200

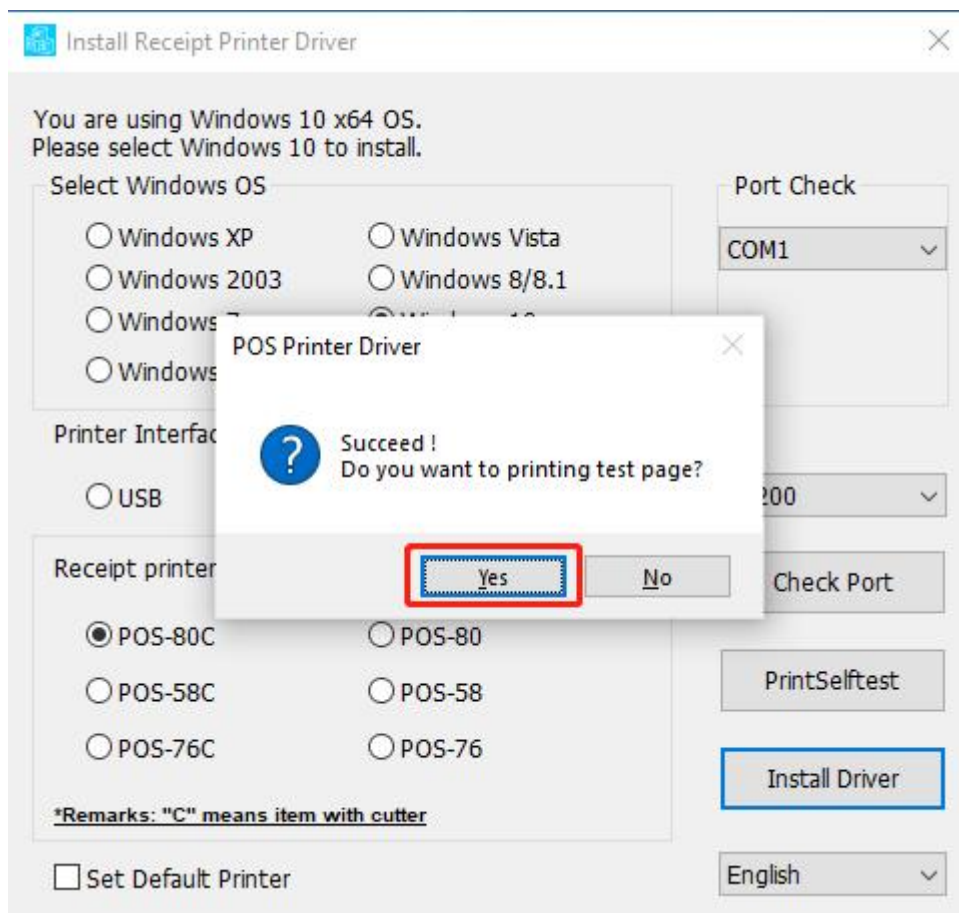
Check Port

PrintSelftest

Install Driver

English

(3) Select YES to print the test page and check the printer driver name



(4) Installation is completed

4、LAN port driver installation

(1) Select LAN port and printer type

You are using Windows 10 x64 OS.
Please select Windows 10 to install.

Select Windows OS

☐ Windows XP ☐ Windows Vista

☐ Windows 2003 ☐ Windows 8/8.1

☐ Windows 7 ☒ Windows 10

☐ Windows 11

Port Check

192.168.3.190

Printer Interface :

☐ USB ☐ COM1 ☒ LAN ☐ BLE

192 . 168 . 3 . 190

Receipt printer

2. ☒ POS-80C ☐ POS-80

☐ POS-58C ☐ POS-58

☐ POS-76C ☐ POS-76

*Remarks: "C" means item with cutter

☐ Set Default Printer

Check Port

PrintSelftest

Install Driver

English

(2) Click Start Installation

You are using Windows 10 x64 OS.
Please select Windows 10 to install.

Select Windows OS

☐ Windows XP ☐ Windows Vista
☐ Windows 2003 ☐ Windows 8/8.1
☐ Windows 7 ☒ Windows 10
☐ Windows 11

Port Check

192.168.3.190

Printer Interface :

☐ USB ☐ COM ☒ LAN ☐ BLE

192 . 168 . 3 . 190

Receipt printer

☒ POS-80C ☐ POS-80
☐ POS-58C ☐ POS-58
☐ POS-76C ☐ POS-76

*Remarks: "C" means item with cutter

☐ Set Default Printer

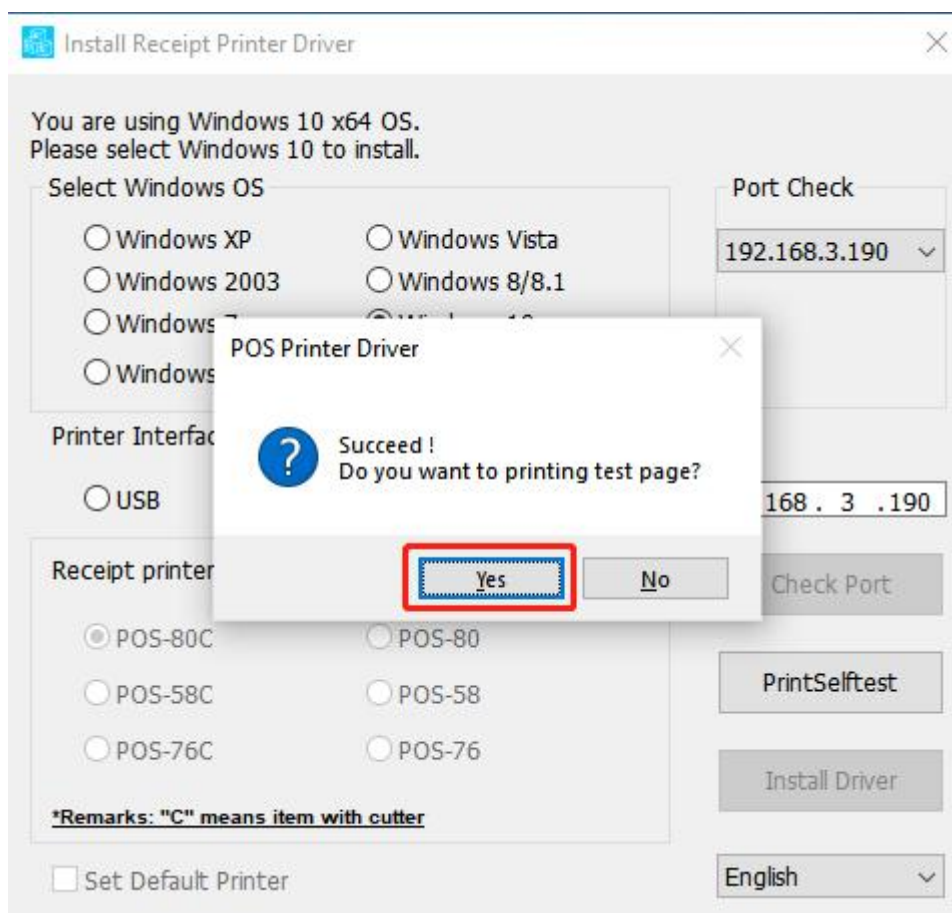
Check Port

PrintSelftest

Install Driver

English

(3) Select YES to print the test page and check the printer driver name

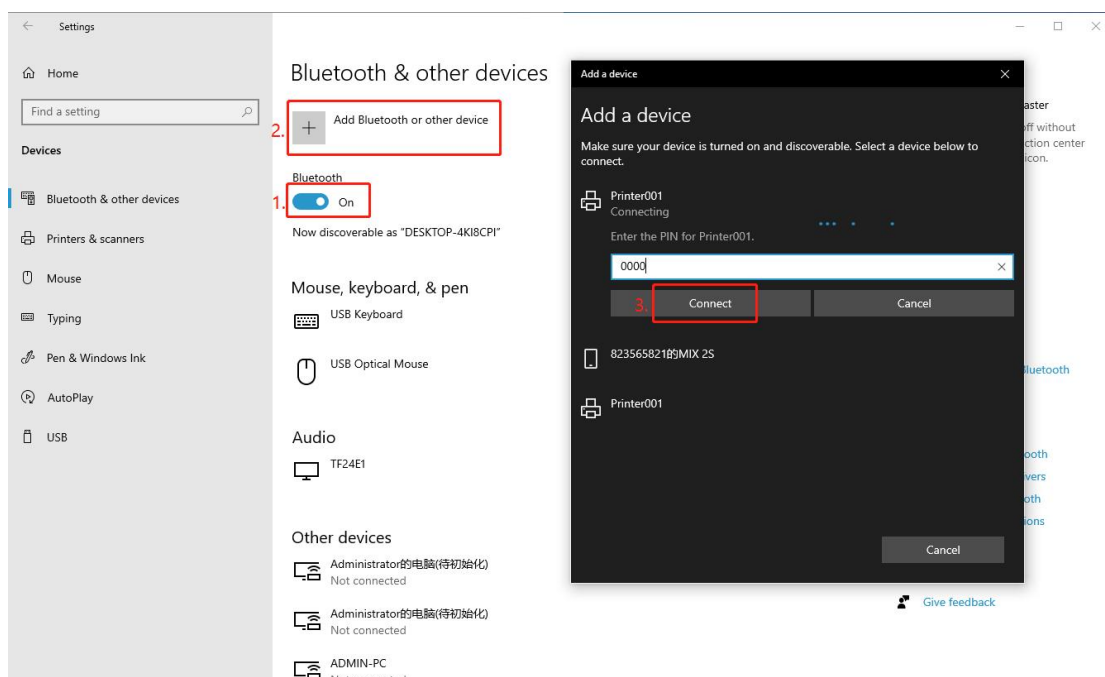


(4) Installation is completed

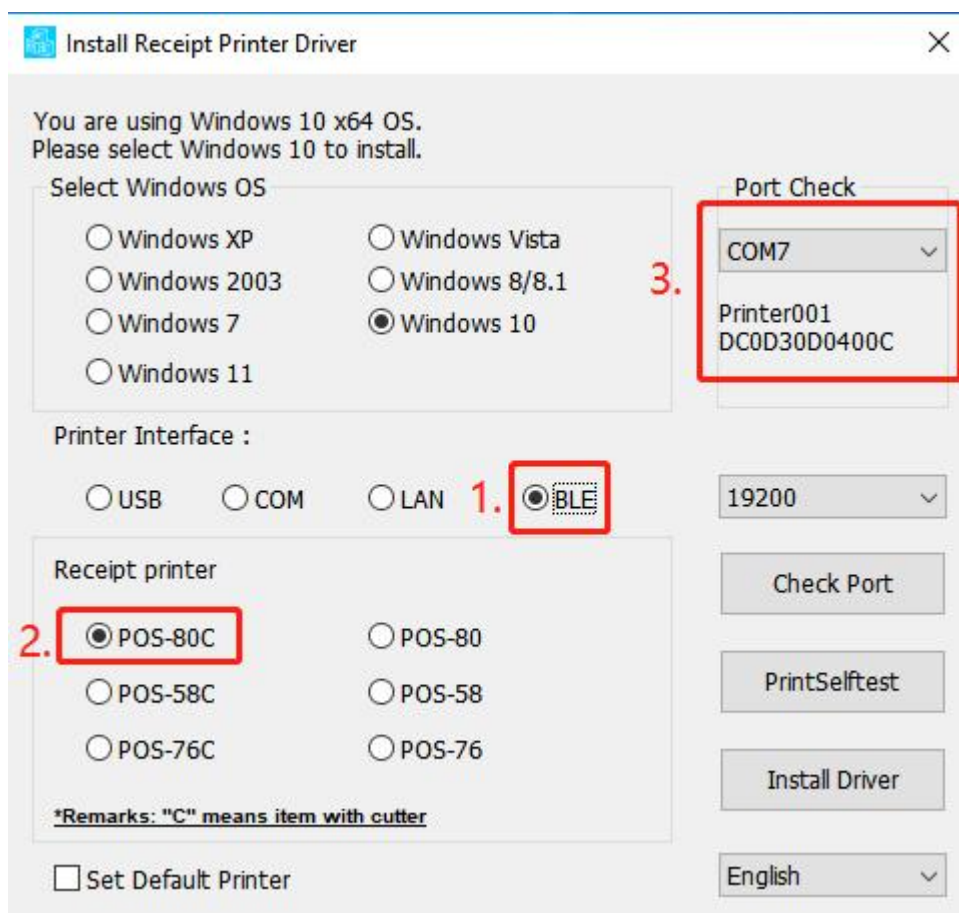
5、Bluetooth driver installation

(1) The computer is connected to the printer Bluetooth,

Bluetooth name: Printer001 key: 0000



(2) Select the Bluetooth port and printer type



(3) Click Start Installation

Install Receipt Printer Driver

You are using Windows 10 x64 OS.
Please select Windows 10 to install.

Select Windows OS

☐ Windows XP ☐ Windows Vista
☐ Windows 2003 ☐ Windows 8/8.1
☐ Windows 7 ☒ Windows 10
☐ Windows 11

Printer Interface :

☐ USB ☐ COM ☐ LAN ☒ BLE

Receipt printer

☒ POS-80C ☐ POS-80
☐ POS-58C ☐ POS-58
☐ POS-76C ☐ POS-76

***Remarks: "C" means item with cutter**

☐ Set Default Printer

Port Check

COM7

Printer001
DC0D30D0400C

19200

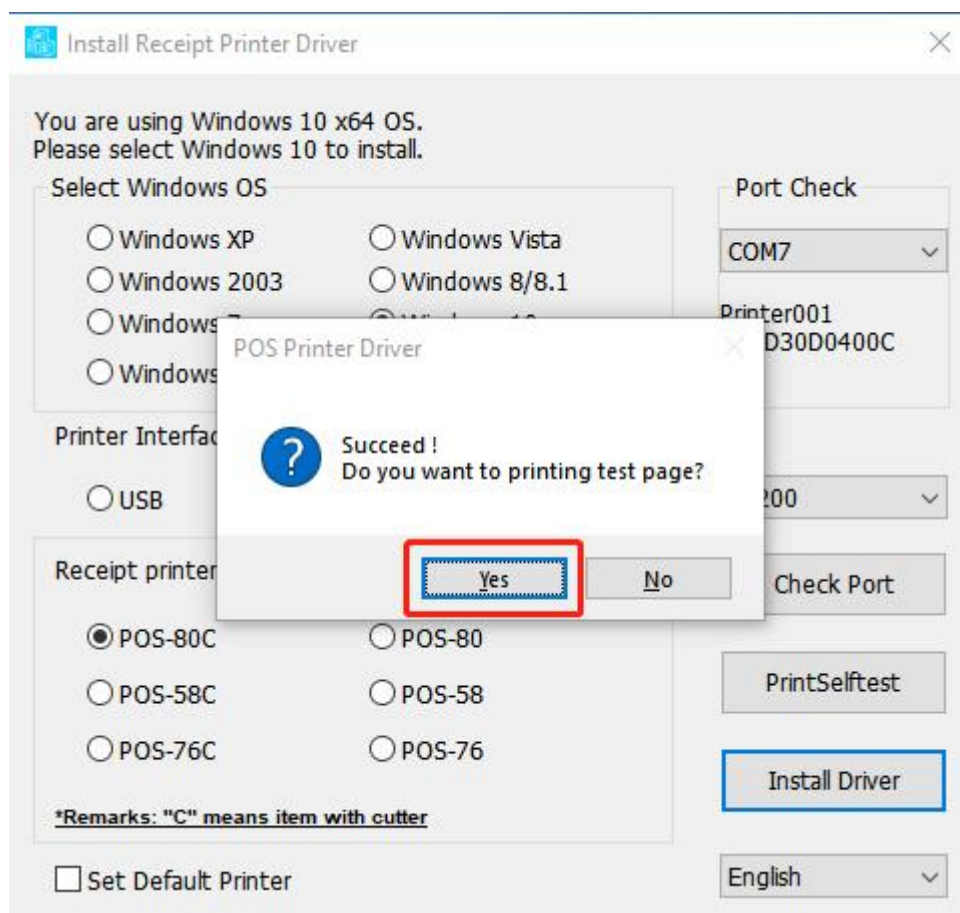
Check Port

PrintSelftest

Install Driver

English

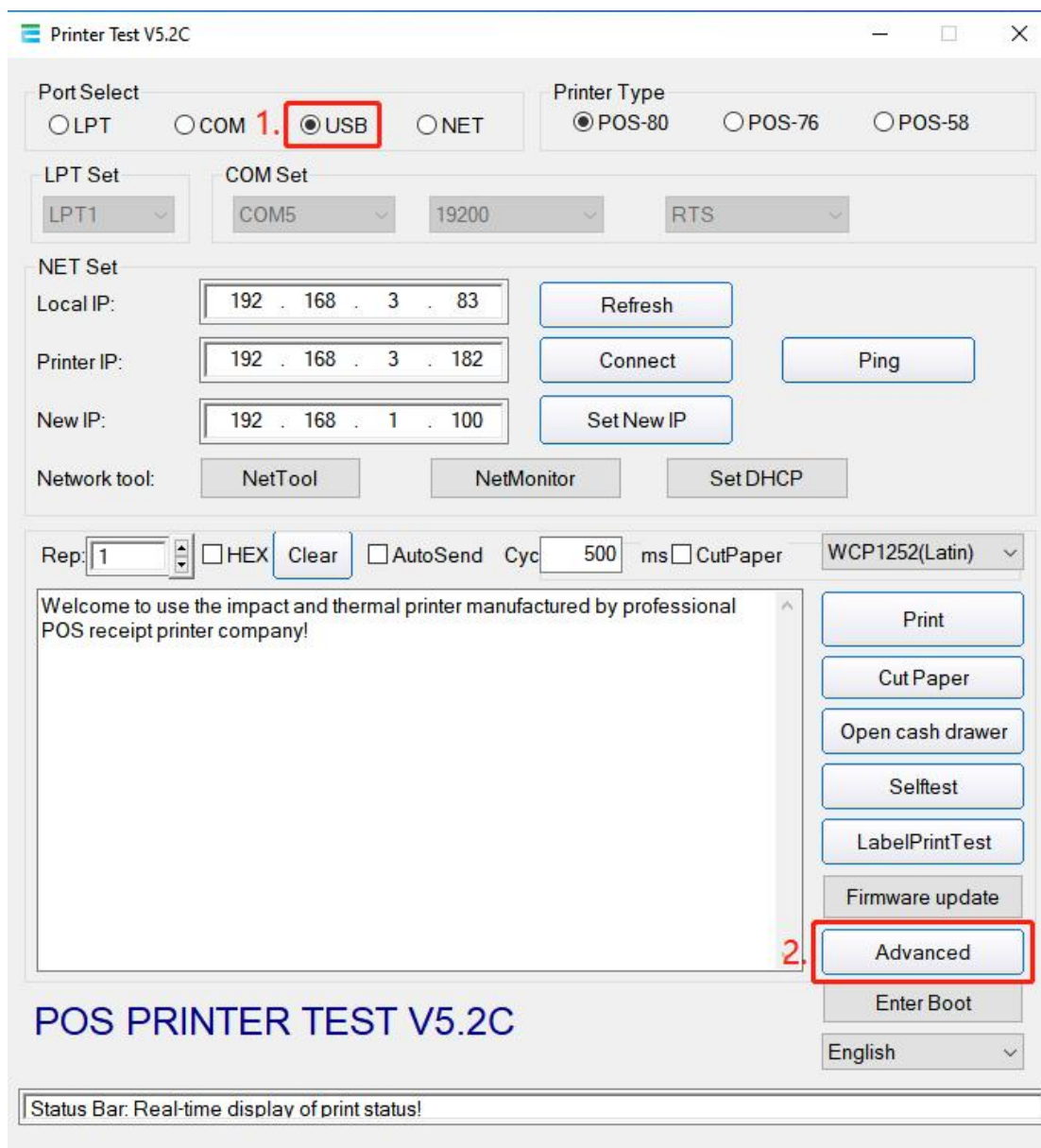
(4) Select YES to print the test page and check the printer driver name



(5) Installation is completed

6、WiFi driver installation

(1) Insert USB cable, select USB connection, and select "advanced"



(2) Select network settings

The screenshot shows the 'Advanced' settings window for the POS Printer Driver V8.11. The window is divided into two main sections. The left section contains various test and configuration buttons, while the right section contains more detailed settings.

Left Section:

- NV Logo Test: NV Download
- 2D Barcode test: Print 2D Barcode
- Black Mark Setting: BlackMarkSet
- File data send: Open File Send
- Net Setting: **Set Net** (highlighted with a red box), BluetoothSet
- USB MODE Setting: Set USB Printing, Set Virtual COM
- Printing Width Set: Setting, 72mm
- Barcode Test: Print BarCode, UPC_A, Height 129
- P80 Black sens: Set Sensitivity, 12, SensH 12
- DIP Setting: P80/58 Set DIP
- Code page Set: PrintCodePage, SetCodePage, 0
- Density Set: Set, 5
- SetPrinterType: Set, ESC/POS
- EPSON: Set, OFF

Right Section:

- Queuing function: Type: Normal, Copies: 1, Function: ON, Initial NO: 0
- TimeEn: OFF, Date: 2022年10月, Time: 17:04:09, QueuEdit
- Intelligent alarm: Setting, LED ON, BEEP ON
- Intelligent mode: Setting, Group
- Idle alarm set: Setting, ON
- Waiting time(s): 6, Alarm on(s): 3, Alarm off(s): 10
- Cutter with alarm: Setting, ON
- Alarm counter: 4, Alarm time(*50ms): 2, Alarm mode: 3
- Cutter/With CashDrawer: Set, ON
- HParameter Set: Print H, Set Delta, 5
- P76 Buzzer Set: BuzzerSet, OFF
- P76 Density Set: Set, NORMAL
- Tools: QueueMonitor, NetTool
- SetUserData: AB1234567891, +1, Set
- return

(3) Set the IP of the printer WiFi(note that the IP needs to be set in the same gateway as the home network), and the printer is connected to the home network

The image shows a software interface for network settings, divided into two main sections: "Net Setting" and "WIFI Setting".

Net Setting:

- IP Address:** 192 . 168 . 3 . 52 (Annotated with red box and "1.Set IP address in your router gateway")
- NetMask:** 255 . 255 . 255 . 0
- GateWay:** 192 . 168 . 3 . 1 (Annotated with red box)
- Buttons: SetIPAddr, SetNetMask, SetGateWay, Set above contents

WIFI Setting:

- SSID:** Router name (Annotated with red box and "2.")
- WIFI Key:** Router password (Annotated with red box)
- Key Type:** WPA2_AES_PSK (Dropdown menu)
- Buttons: Set above contents, Setting All (Annotated with red box and "3."), Return

If the wifi DHCP enable, ignore Step1

(4) Use "POS Printer Driver V8.11" to install the driver, select the network port, printer type and IP port number

WIFI Printer

Version : V1.0.08_2.0.6R
Run mode: APSTA
WebLogin: admin,admin
[STA Info]
SSID : zywell-office3
Key : WPA2PSK, AES, b1*****
IPADDR : 192.168.3.182
Mask : 255.255.255.0
Gateway : 192.168.3.1
DHCP : Disabled

Install Receipt Printer Driver

You are using Windows 10 x64 OS.
Please select Windows 10 to install.

Select Windows OS

☐ Windows XP ☐ Windows Vista
☐ Windows 2003 ☐ Windows 8/8.1
☐ Windows 7 ☒ Windows 10
☐ Windows 11

Printer Interface :

☐ USB ☐ COM 1. ☒ LAN ☐ BLE 3. 192.168.3.182

Port Check

Searching IP

Receipt printer

2. ☒ POS-80C ☐ POS-80
☐ POS-58C ☐ POS-58
☐ POS-76C ☐ POS-76

*Remarks: "C" means item with cutter

☐ Set Default Printer

Check Port

PrintSelftest

Install Driver

English

(5) Click Start Installation

Install Receipt Printer Driver

You are using Windows 10 x64 OS.
Please select Windows 10 to install.

Select Windows OS

☐ Windows XP ☐ Windows Vista
☐ Windows 2003 ☐ Windows 8/8.1
☐ Windows 7 ☒ Windows 10
☐ Windows 11

Printer Interface :

☐ USB ☐ COM ☒ LAN ☐ BLE

192.168.3.182

Receipt printer

☒ POS-80C ☐ POS-80
☐ POS-58C ☐ POS-58
☐ POS-76C ☐ POS-76

*Remarks: "C" means item with cutter

☐ Set Default Printer

Port Check

Searching IP

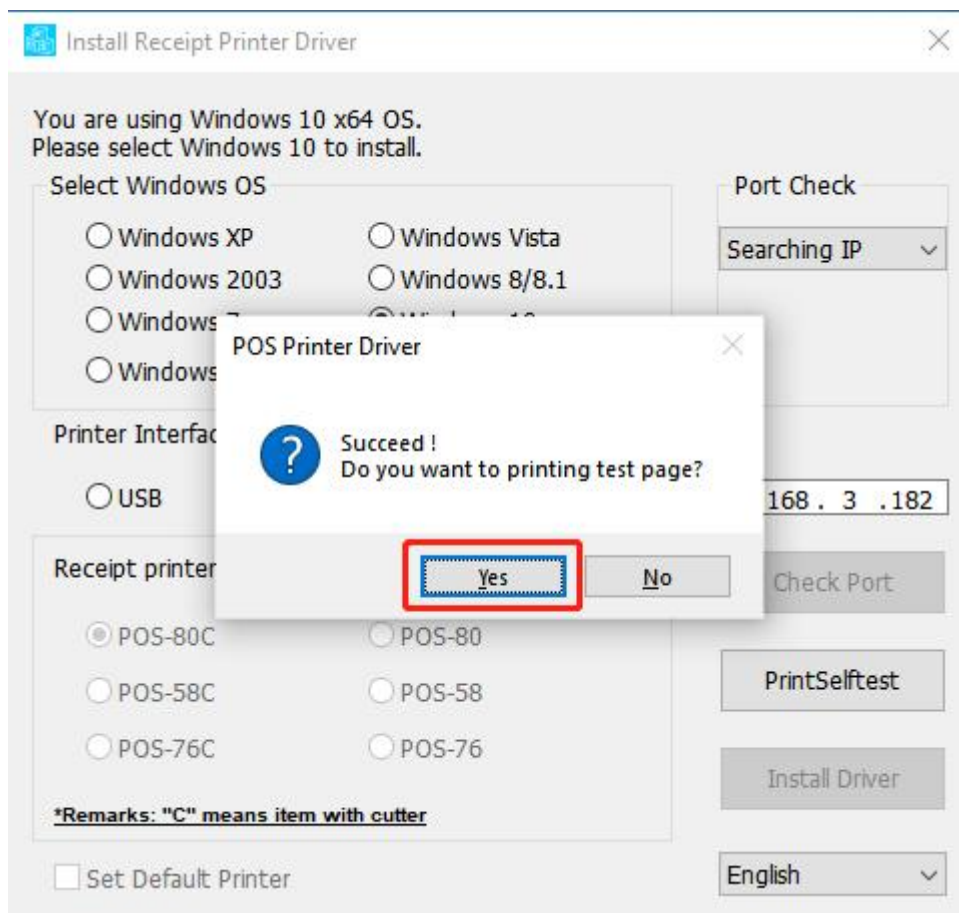
Check Port

PrintSelftest

Install Driver

English

(6) Select YES to print the test page and check the printer driver name



(7) Installation is completed